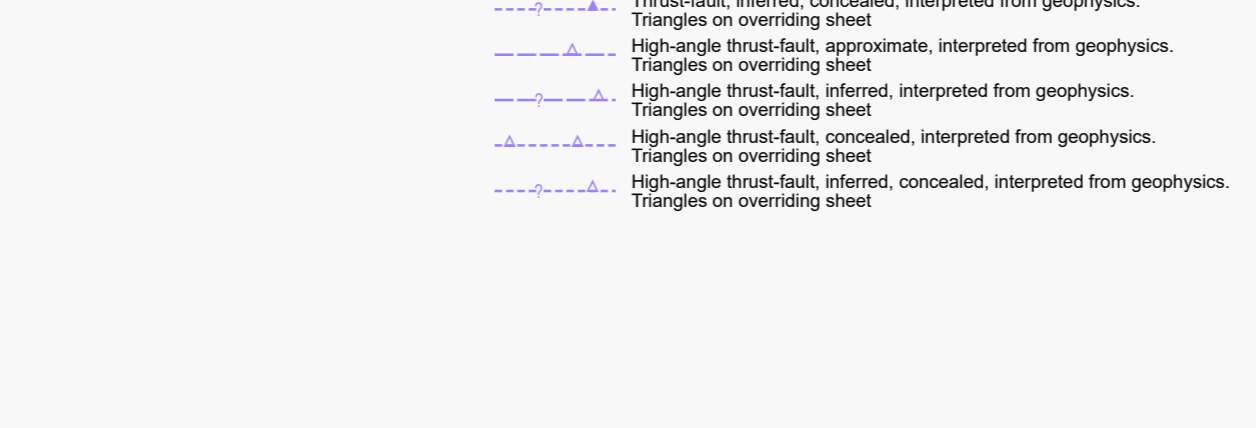
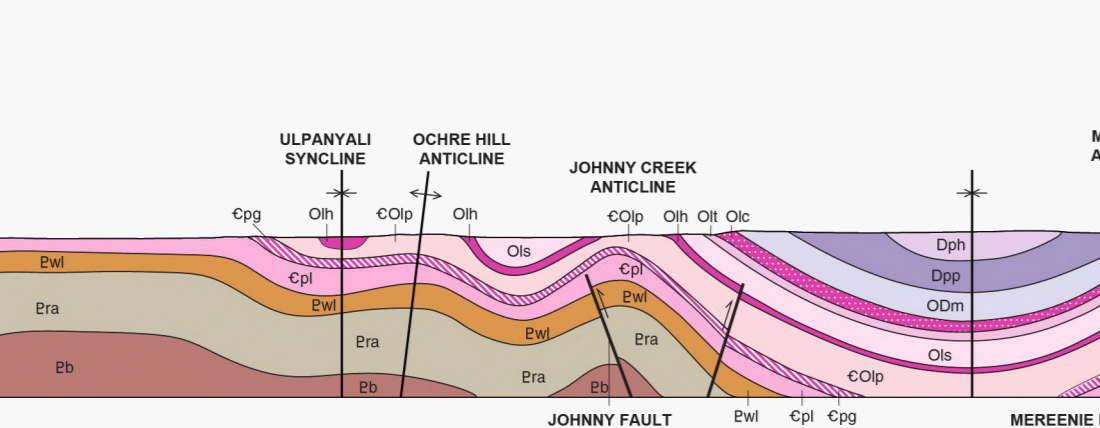
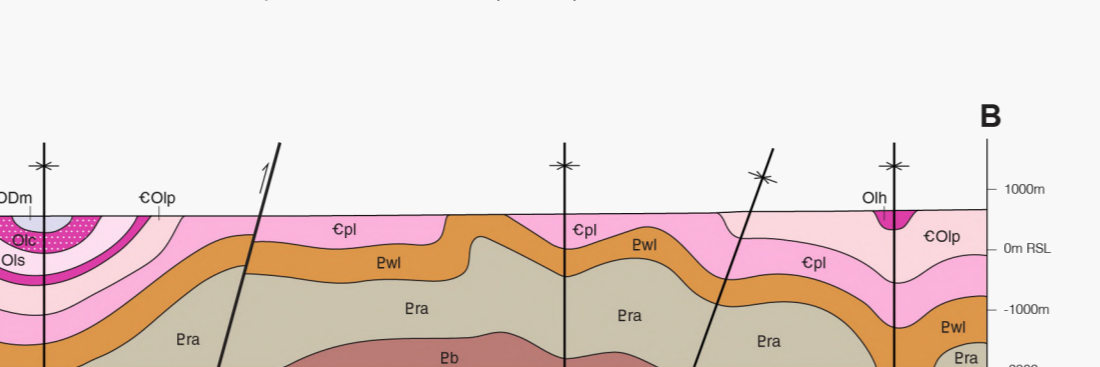
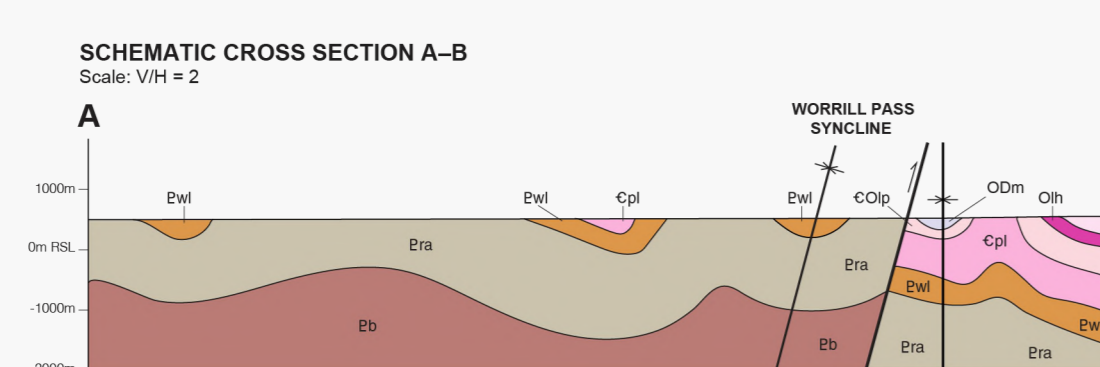
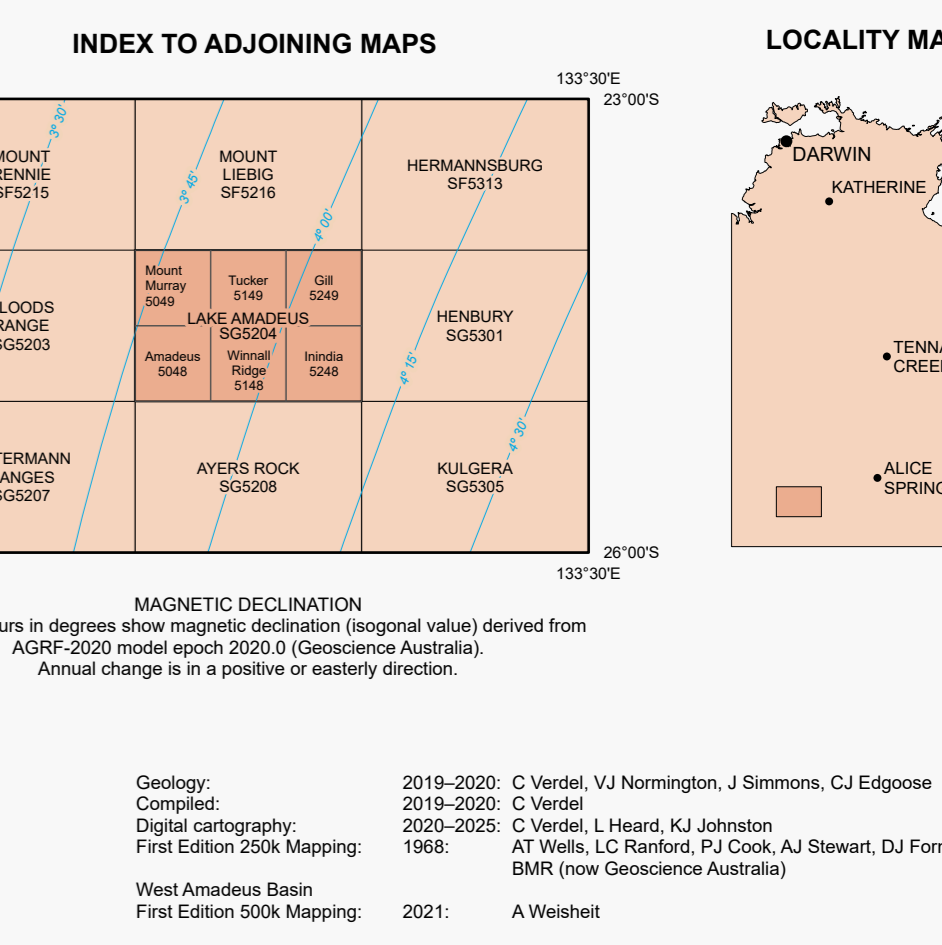
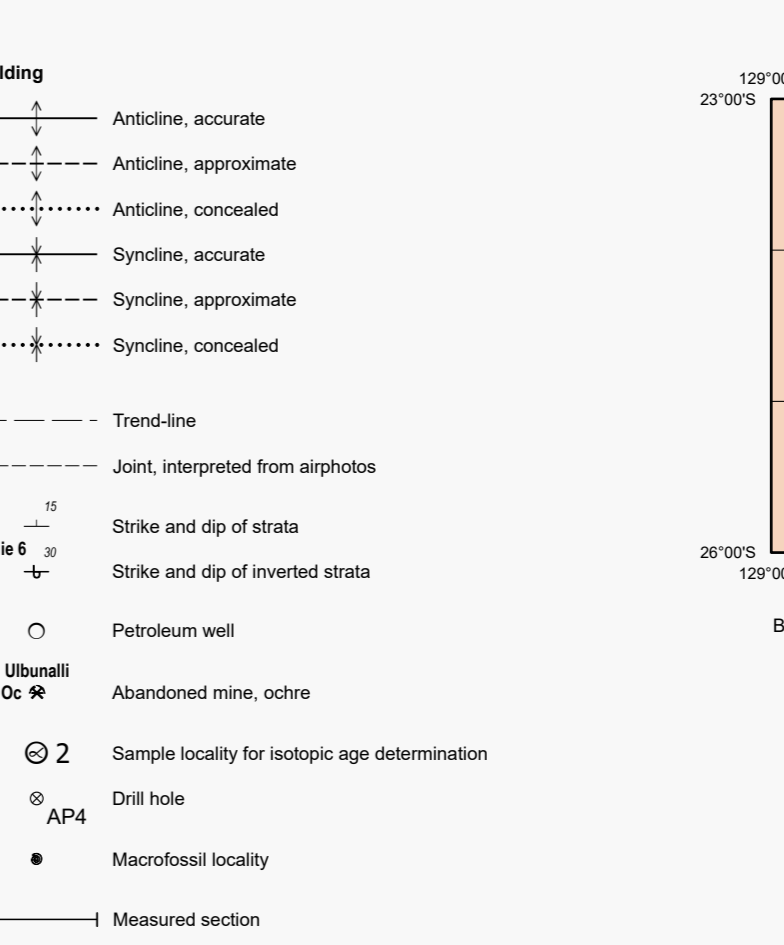
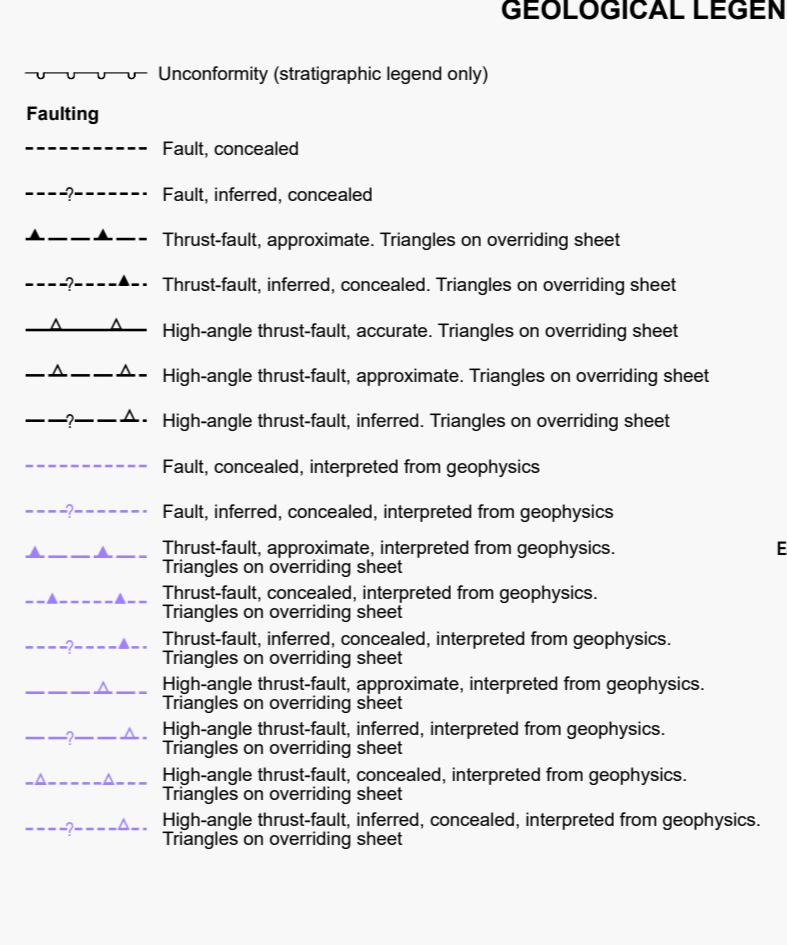
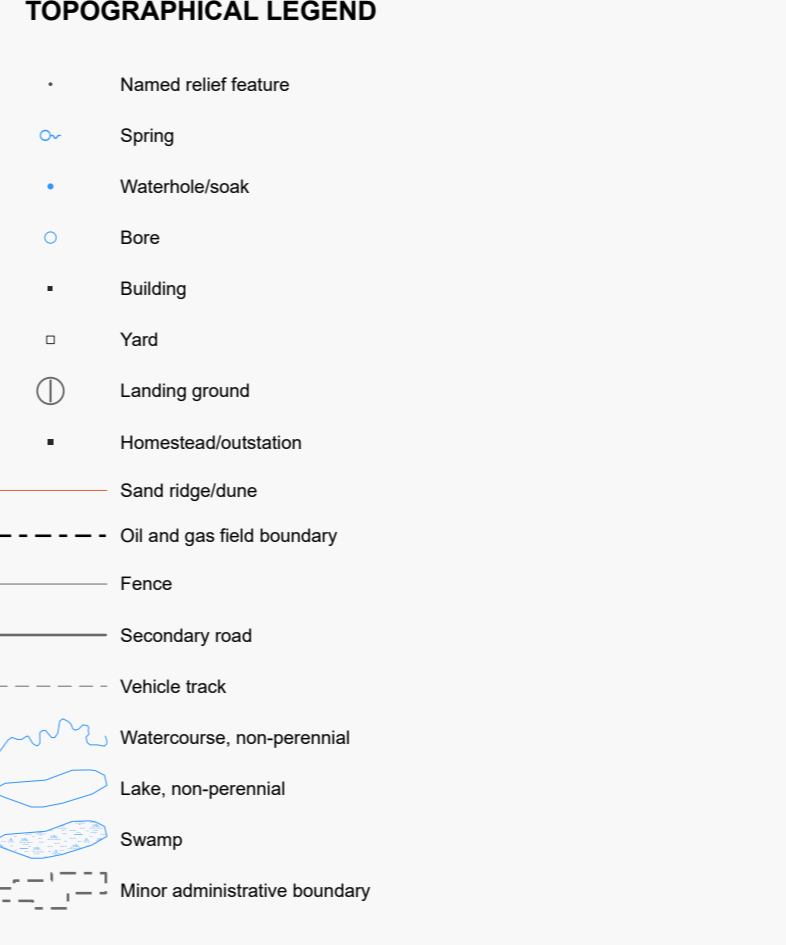
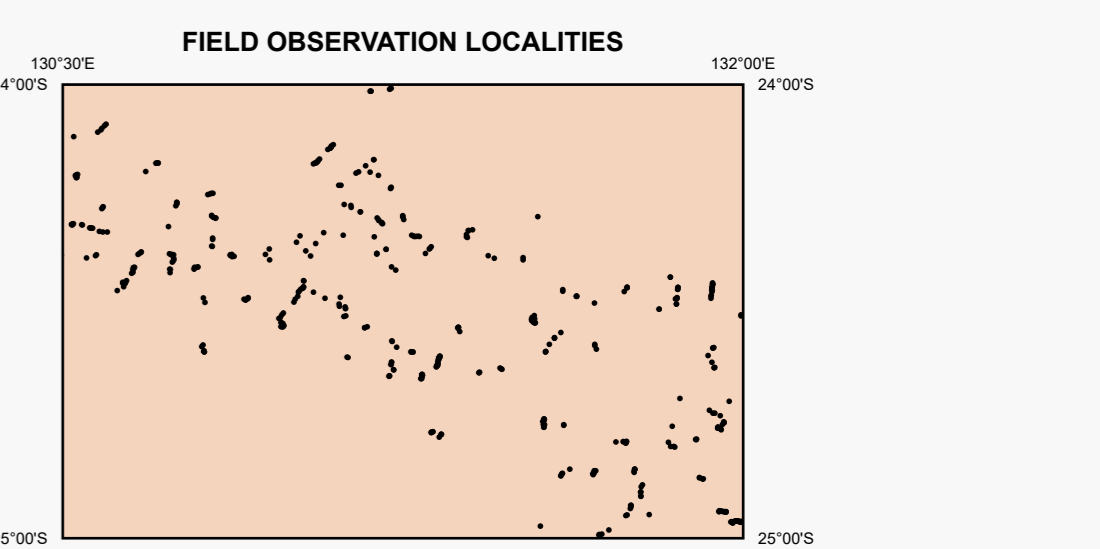


Table of geological units with their codes and descriptions. Units include Quaternary (Qa, Qb, Qc, Qd, Qe, Qf, Qg, Qh, Qi, Qj, Qk, Ql, Qm, Qn, Qo, Qp, Qq, Qr, Qs, Qt, Qu, Qv, Qw, Qx, Qy, Qz), Devonian (Dp, Dq, Dr, Ds, Dt, Du, Dv, Dw, Dx, Dy, Dz), Silurian (Sm, Sn, So, Sp, Sq, Sr, Ss, St, Su, Sv, Sw, Sx, Sy, Sz), Ordovician (Om, On, Op, Oq, Or, Os, Ot, Ou, Ov, Ow, Ox, Oy, Oz), Cambrian (Cb, Cc, Cd, Ce, Cf, Cg, Ch, Ci, Cj, Ck, Cl, Cm, Cn, Co, Cp, Cq, Cr, Cs, Ct, Cu, Cv, Cw, Cx, Cy, Cz), Ediacaran (Ea, Eb, Ec, Ed, Ee, Ef, Eg, Eh, Ei, Ej, Ek, El, Em, En, Ea, Eb, Ec, Ed, Ee, Ef, Eg, Eh, Ei, Ej, Ek, El, Em, En), Cryogenian (Ca, Cb, Cc, Cd, Ce, Cf, Cg, Ch, Ci, Cj, Ck, Cl, Cm, Cn, Co, Cp, Cq, Cr, Cs, Ct, Cu, Cv, Cw, Cx, Cy, Cz), and Tonian (Ta, Tb, Tc, Td, Te, Tf, Tg, Th, Ti, Tj, Tk, Tl, Tm, Tn, To, Tp, Tq, Tr, Ts, Tt, Tu, Tv, Tw, Tx, Ty, Tz).

Detailed descriptions for each geological unit, including lithology, structure, and fossil content. For example, Qa: Active drainage channels and flood plains; Dp: Purijara Group Undivided sandstone, siltstone, conglomerate; Om: Merensie Sandstone Quartz sandstone and litharenite, fine-coarse-grained, variably sorted, cross-bedded, strongly ferruginised, kaolinitic, white to pale-brown.



GEOCHRONOLOGY SAMPLE LOCALITIES table with columns for Sample No., Sample Name, Formation, Easting, and Northing.

Geology: 2019-2020: Vardi, V.J., Normington, J., Simmons, C.J., Edgose, C.J. 2020. LAKE AMADEUS, Northern Territory (Geoscience Australia). 1:250 000 geological map series explanatory notes. SG 52-04. Northern Territory Geological Survey, Darwin.

