



GROUP
ANNUAL REPORT

For
EXPLORATION LICENCES

EL 26628 and 29828

GR 386

TANAMI ALTURA JV PROJECT

From
1 March 2018 to 28 February 2019

Holder	Altura Exploration Pty Ltd.
Operators	Prodigy Gold NL
Author	J Rohde
Date	April 2019
Email	jrohde@prodigygold.com.au
Target Commodity	Gold
Datum/Zone	GDA94/ MGA Zone 52
250,000 mapsheet	The Granites (SF5203)
100,000 mapsheet	MC Farlane (4757), Pedestal Hills (4756), Frakenia (4857) Inningarra (4856)

Distribution:

- o NT DPIR – digital
- o Central Land Council - digital
- o Prodigy Gold NL - Perth - digital

File: jr167 NTDPIR 386 Altura JV GA 2019



CONTENTS

	Page
1.0 ABSTRACT	1
2.0 INTRODUCTION	1
3.0 TENURE.....	2
4.0 GEOLOGY	2
5.0 PREVIOUS EXPLORATION	3
6.0 EXPLORATION COMPLETED	4
6.1 Surface Sampling	4
6.2 Desktop Study - Proposed Exploration	4
7.0 RECOMMENDATION AND CONCLUSIONS	5
8.0 BIBLIOGRAPHY	6

TABLES

Table 1	Tenement Details
Table 2	2018 Summary of Exploration
Table 3	Historical Drilling on EL26628 which is the target of the spoil collection programme

FIGURES

Figure 1	Project Location & Tenement Locality	1 :1,000,000
Figure 2	Drill hole locations for proposed spoil collection and proposed access to EL26628 (blue tracks)	

PLATES

Plate 1	Regional Basement Geology NTGS & Prodigy Gold NL interpretation 500k merged	1: 100,000
Plate 2	Surface Sample Location Plan	1: 10,000

DIGITAL APPENDICE

FILE	DESCRIPTION
GR386_2018_GA_01_SSsample.txt	Surface sampling type, location, description
GR386_2018_GA_02_SSAssays.txt	Surface sampling type, location, assay results
GR386_2018_GA_03.pdf	Group annual report 2018
GR386_2018_GA_04.pdf	CSIRO geochemical classification report

ACKNOWLEDGEMENT AND WARRANTY

1. Subject to 2, the tenure holder acknowledges that this Report, including the material, information and data incorporated in it, has been made under the direction or control of the Northern Territory (the NT) within the meaning of section 176 of the Copyright Act 1968.
2. To the extent that copyright in any material included in this Report is not owned by the NT, the tenure holder warrants that it has the full legal right and authority to grant, and hereby does grant, to the NT, subject to any confidentiality obligation undertaken by the NT, the right to do (including to authorise any other person to do) any act in the copyright, including to:
 - use;
 - reproduce;
 - publish; and
 - communicate in electronic form to the public, such material, including any data and information included in the material.
3. Without limiting the scope of 1 and 2 above, the tenure holder warrants that all relevant authorisations and consents have been obtained for all acts referred to in 1 and 2 above, to ensure that the doing of any of the acts is not unauthorised within the meaning of section 29(6) of the Copyright Act.

1.0 ABSTRACT

In May 2018 ABM Resources NL changed its name to **Prodigy Gold NL** (Prodigy).

Exploration Licences **26628** and **29828** form Prodigy's 'Tanami Altura JV' project which is located approximately 600 km north-northwest of Alice Springs in the north Tanami Region of the Aileron Province (**Figure 1**).

Prodigy is exploring the 'Tanami Altura JV' project for the potential of gold mineralisation.

Exploration consisted of surface sampling and a desktop study.

The surface sampling consisted of 60 spoil samples collected on the limited area cleared for access by the Central Land Council which forms part of EL26628. The spoil samples formed the second part of a program proposed to be continued in 2019.

The assay results from the program will form a data set for an ongoing lithochemistry study. The lithochemistry study aimed to establish a classification of the encountered rocks into stratigraphic groups based on the work of Lambeck, 2008 and then CSIRO.

Previous aeromagnetic data interpretation mapped the sample area as Dead Bullock Formation.

The CSIRO study results confirmed the previous interpretation. The underlying lithology in the sampled area of EL26628 is prospective Dead Bullock Formation based on the rocks geochemical fingerprint.

The Prodigy desk top study resulted in a work proposal for EL26628. It includes the collection of historical drill spoils from 1,330 historic drill holes in conjunction with field mapping of any outcrop and occasional rock chip sampling. A map of prospective historic drill hole traverses and access tracks was produced (**Figure 2**).

A recommendation was made to continue with the historic drill spoil sampling program.

2.0 INTRODUCTION

Prodigy entered into a JV agreement with Altura as four of their tenements EL26626 (Application), EL26627 (Application), EL26628 and EL29828 complement Prodigy's Tanami region tenement holdings with under explored and analogous geology to the region's major gold deposits.

EL26628 and EL29828 adjoin Prodigy's Bluebush (formerly Twin Bonanza) Project tenements. EL26628 and EL29828 were combined to form the 'Tanami Altura JV' project reporting group.

The Tanami Altura JV project is centred approximately 600 kilometres north-northwest of Alice Springs and is located approximately 45km west northwest of the Callie Mine (**Figure 1**).

Access to the project area is from Alice Springs via the Tanami Road up to the Rabbit Flat settlement then south towards the Tanami Downs cattle station and then further on unsealed pastoral tracks throughout the project area.

This 2nd group report covers exploration carried out during the 6th year of term for both tenements - the period from the 1 March 2018 to 28 February 2019.

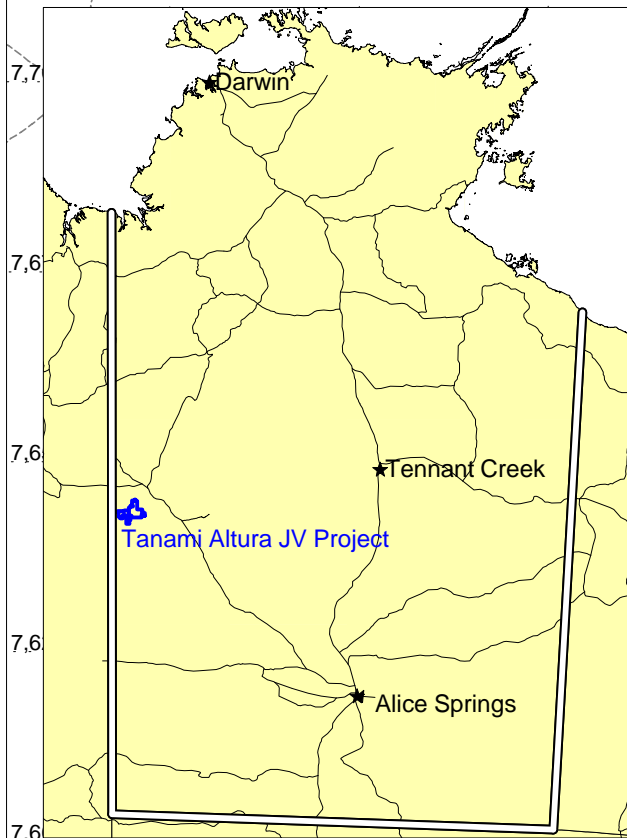
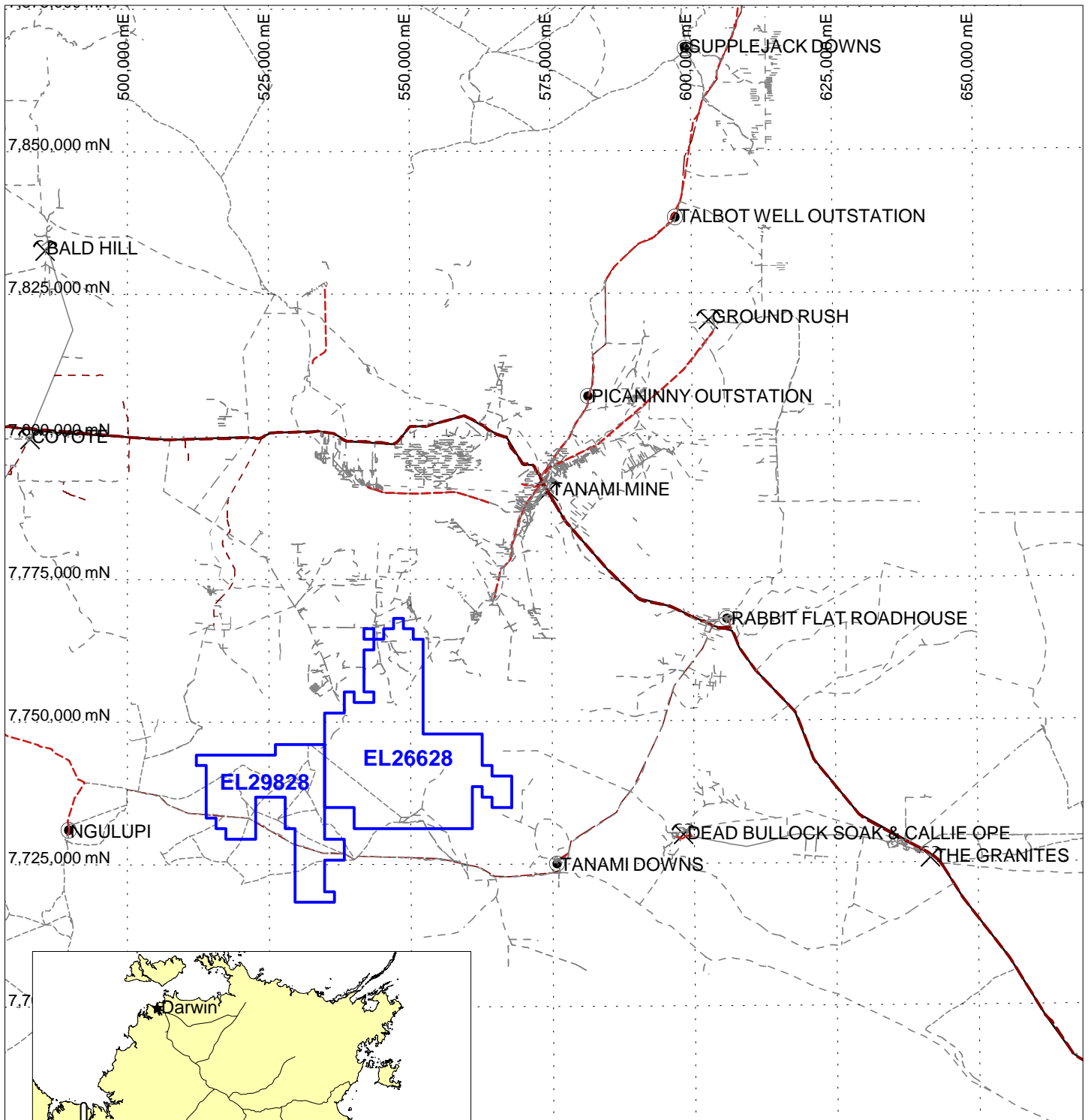


FIGURE 1

'Tanami Alta JV' project

Project Location &
Tenement Locality

EL 26628 & 29828

Date: 6/04/2016

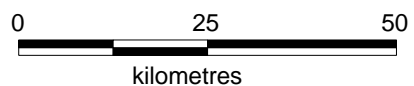
Author: J. Rohde

Office: Nedlands

Drawing: J. Rohde

Scale: 1:1000000

Projection: Longitude / Latitude (WGS 84) A4 Portrait



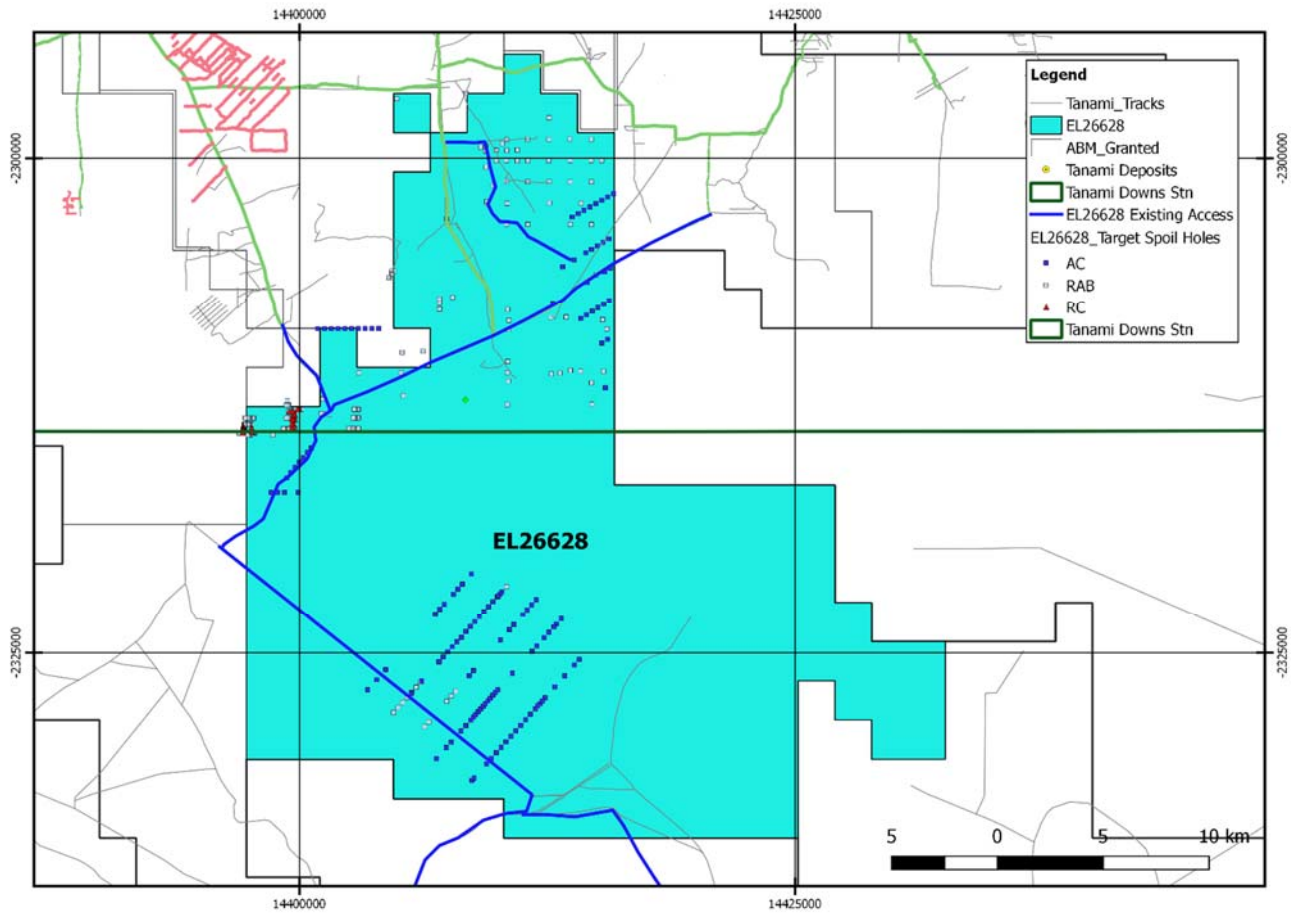


Figure 2 Drill hole locations for proposed spoil collection and proposed access to EL26628 (blue tracks)

3.0 TENURE

Exploration Licences 26628 and 29828 were granted to Altura Exploration Pty Ltd. on 1 March 2013 for a period of six years.

In June 2015 Prodigy entered into an option agreement with Altura to acquire a 90% interest in the tenements and establish a joint venture. Following a due diligence period, Prodigy exercised the option and transfers reflecting Prodigy's 90% interest were registered effective 4 February 2016.

On 11 March 2016 amalgamated technical reporting for ELs 26628 and 29828 (Tanami Altura JV) was approved and the group reporting ID GR 396 was allocated. The reporting period for this title group was set to 1 March to 28 February with a report submission due date at the 28 April each year.

Applications of extension of term are currently pending in respect of both Exploration Licences.

Group GR386 tenement details are listed in **Table 1** and are illustrated in **Figure 1**.

Table 1: Tenement Details

Title No	Current Blocks	Grant Date	Expiry Date
EL26628	211	1/03/2013	28/02/2019
EL29828	109	1/03/2013	28/02/2019

4.0 GEOLOGY

The SF5203 Granites map sheet (2014V) has tenements EL26628 & 29828 mainly covered with Quaternary sands, alluvial active drainage and lacustrine, playa lakes. Large areas of ferricrete over pedestal Beds (Czf/Pzs) are interspersed over the tenure. Outcrops of Pedestal Beds and Lucas Formation (Canning Basin) exist throughout EL29828, and in the southern portion of EL26628. The Antrim Plateau Volcanics are exposed as a thin N-S strip on the eastern side of EL26628. In the mid-north of the EL26628 tenure, the Gardiner Sandstone is exposed as the MacFarlanes Peak Range and strikes NW-SE with a few smaller outcrops existing to the NE. A dolerite sill is exposed in two small areas within close proximity to each other just to the north of MacFarlanes Peak Range. To the north-east of the dolerite sill the Tanami Group become exposed - the Killi Killi formation and the Dead Bullock Formations Callie Member. Both Tanami Group formation outcrops strike NNW-SSE. The Grimwade Suite has a number of small outcrops toward the NE of the Tanami Group, until you reach the Ferdies Member of the Dead Bullock Formation.

The mid-north section of EL26628 is geologically the most interesting. The down stratigraphic sequence of the Paleoproterozoic Tanami Group is represented from MacFarlanes Peak Range to the NE and exists within the tenure boundary.

The 2015 field data augments Prodigy's existing database from previous years and has been integrated with geophysical data (gravity, aeromagnetic, radiometric), government survey data (outcrop mapping, solid-geology basement interpretations and regional seismic), trends observed in satellite imagery and previous non-government basement interpretations to produce an updated regional basement interpretation map for gold exploration targeting (**Plate 1**).

5.0 PREVIOUS EXPLORATION

In the **1st year** of tenure exploration consisted of desktop studies by Altura.

In the **2nd year** of tenure exploration consisted of Altura's continuation of the work from the previous period and included desktop studies, the integration of geophysical and geological data, GIS data management and reporting. No on ground exploration was completed.

In the **3rd year** of tenure exploration consisted of Prodigy's desktop studies including regional mapping and target generation by Prodigy. No on-ground exploration was conducted during the reporting period neither by Altura nor by Prodigy.

The mapping resulted in a regional basement geology map scaled 1:500,000 which included the project area (**Plate 1**). The map represents a merger of NTGS and Prodigy interpretation at this scale.

The desktop studies recommended for **EL26628** reconnaissance mapping and a standard soils/rock (Au) and XRF (As, Pb and Cu) program covering all prospects (Suzaku, Byakko, Genbu, Seiryu and Blue Hart) followed by a low detection limits geochemistry program in areas returning elevated assay results.

In the **4th year** of tenure exploration consisted of Prodigy's desktop studies that focused on the regional targeting review.

A desktop target review was completed comprising a prospectivity analysis using Prodigy's Milestone ranking (**Figure 2**), which highlighted areas that would drive exploration for the 2017 field season. Generally locations associated with the Trans-Tanami Fault Zone, the Dead Bullock stratigraphy, folding and faulting complexity, and early stage geochemical anomalism contributed to a higher ranking in the prospectivity analysis.

The Capstan Block, named after the Capstan Prospect on neighbouring EL31291, is a 22 km x 8 km area mainly underlain by Dead Bullock stratigraphy within the Trans-Tanami Fault Zone, which translated as such in a high prospectivity ranking.

A proportion of the southern region of the Capstan Block falls within EL26628 and contains 3 target areas, including the historic Suzaku, Byakko, Genbu prospects (**Plate 1**). The Seiryu prospect is underlain by Tanami Group lithology. All 4 prospect areas were classed at Stage 2 in Prodigy's Milestone Ranking (**Figure 2**).

EL29828 did not contain any targets that rank in Prodigy's 2016 prospectivity analysis.

In the **5th year** of tenure Prodigy invited the Corporate Geoscience Group ("CGSG") to undertake a geological framework and targeting study of Prodigy's Tanami projects which included the Tanami Altura JV project.

The review resulted in a priority sorted list with a total of 2 targets within the Tanami Altura JV project tenements. Both targets are located on a NW-SE to WNW-ESE thrust fault (Mongrel Fault) connected at depth to deep-seated D0 rift structure as well as subparallel (thrust-truncated?) folds.

The surface sampling consisted of 7 reconnaissance rock chip and 30 spoil samples. The spoil samples formed the first part of a program to be continued in 2018.

The maximum gold assay result returned from the rock chip sampling was 205 ppb (W214012) from a location 335m SE of the **Genbu** prospect on EL26628.

6.0 EXPLORATION COMPLETED

In the 6th year of tenure exploration consisted of Prodigy’s surface sampling and a desk top study. A summary of exploration is listed in **Table 2**.

Table 2 2019 Summary of Exploration

Tenement No	Number of Sample Locations for a litho-geochemistry study from historic drill spoil	Number of Samples assayed	Sample Locations found but not sampled	Sample Locations not found	Desk Top Study
EL 26628	75	60	8	7	Yes
EL 29828	0				

6.1 Surface Sampling

A total of 75 spoil surface sample locations were visited on EL26628. The spoil samples formed part of the second campaign of an ongoing program to be continued during the 2019 field season.

A total of 8 sample locations [FMS180 to FMS187 (Found Not Sampled)] were found but not sampled due to the lack of adequate sample material.

A total of 7 sample locations [SNL269 to SNL275 (Sample Not Located)] could not be located.

The spoil samples were collected from the freshest material of historic drill spoil.

A total of 60 spoil samples were multi-element assayed for whole rock geochemistry to validate and fingerprint the Dead Bullock Formation in collaboration with the Phase 2 CSIRO litho-geochemical project (Bluebush – Bonanza). The samples were integrated with historic geochemical data and the results of the Phase 1 CSIRO study to establish what the nature of the Dead Bullock Formation at Capstan South is. The results of this work are summarised in “Geochemical classification of the Tanami Group stratigraphy in the Bluebush area, Northern Territory” (S. Schmid, 2019).

The CSIRO study results indicated that the underlying lithology in the sampled area of EL26628 as prospective Dead Bullock Formation based on the rocks’ geochemical fingerprint.

The complete CSIRO report is appended as appendix GR386_2018_GA_04.pdf. All sample locations are shown on **Plate 2**. All surface sampling data is included in the appendices.

6.2 Desktop Study - Proposed Exploration

Due to the lack of outcrop in the Tanami, the ability to be able to collect historical drill spoils was important to Prodigy Gold as this to date had been an effective exploration tool. Drill spoils are the remnant material from historical holes and on occasions where the drilling has been deep enough to intersect weathered rock or in some cases bedrock these small rock chip samples can be collected. These samples can be used to geochemically fingerprint the rock type which assists in developing an understanding of the stratigraphy and assists in updating the geological map in areas dominated by sand cover and poor exposure.

Prodigy's geological understanding of the Tanami Regional project area has improved tremendously over the last 12 months, with the application of end of hole litho-geochemistry from regional bedrock samples providing an objective test of previous geological assumptions. A study completed with the CSIRO over Prodigy's Suplejack Project has reclassified the NTGS mapped Ware Group to the more prospective Mount Charles Formation based on the rocks' geochemical fingerprint at the Suplejack Project which has improved Prodigy's ability to target and intersect economic mineralization at Hyperion/Seuss Resource. The spoil and litho-geochemistry data project was expanded to the Bluebush area which joins the Altura project to the north in late 2017. Data collection commenced over the highly prospective Capstan Block and was evaluated in a second CSIRO study which commenced in July 2018.

A total of 1,330 holes have been drilled on EL26628 between 1992 and 2006 (**Table 3**) and Prodigy Gold proposes to sample as many of these holes as possible.

Hole Type	Total	Average Depth (m)
POST	514	2.4
VAC	317	7.0
RAB	298	29
AC	178	54
RC	22	52
DDH	1	62

Table 3 Historical drilling on EL26628 which is the target of the spoil collection programme

Through experience in the area from previous sampling programs holes that are deeper than 25m have the greatest potential.

Of interest to Prodigy are the AC holes drilled by Newmont in 2006, the 22 RC holes drilled in 1994 and RAB holes which are deeper than 25m (**Figure 2**). The AC holes have an average depth of 54m which are likely to have drilled deep enough to have intersected the weathered bedrock. The RC drillholes from 1994 are less likely to be preserved but warrant inspection as they have an average depth of 52m.

The POST holes were drilled in 1992 and the Vacuum holes (VAC) were drilled between 1991 and 1998. Due to the age and the shallow depth of these holes it is unlikely that any material would be suitable for sampling and will not be targeted.

Prodigy proposes to send in field teams to return to these areas and scout across the old drill lines and search for any remnant material. This data will then be used to update the geological interpretation of EL26628 and assessment of target potential for planning further work.

7.0 RECOMMENDATIONS AND CONCLUSIONS

Deriving from aeromagnetic data interpretations the underlying lithology of the sampled area was previously interpreted as Dead Bullock Formation.

The geochemistry study completed together with the CSIRO in February 2019 confirmed the underlying lithology interpretation as the prospective Dead Bullock Formation and as such upgrades the exploration potential of this area.

A recommendation was made to continue with the historic drill spoil sampling program to further evaluate the geochemical classification of the Altura Project.

8.0 BIBLIOGRAPHY

Bell, K., 2016, Tanami Project – Sub –Project - Altura (Granted Tenure EL26628 & EL29828) – Exploration Targeting Report 2016, ABM unpublished internal Report.

Bourke, B. G., 2015, Tanami Project, NT, EL 26628 Annual Report for the Period 1st March 2014 to 28th February 2015.

Bourke, B. G., 2015, Tanami Project, NT, EL 29828 Annual Report for the Period 1st March 2014 to 28th February 2015.

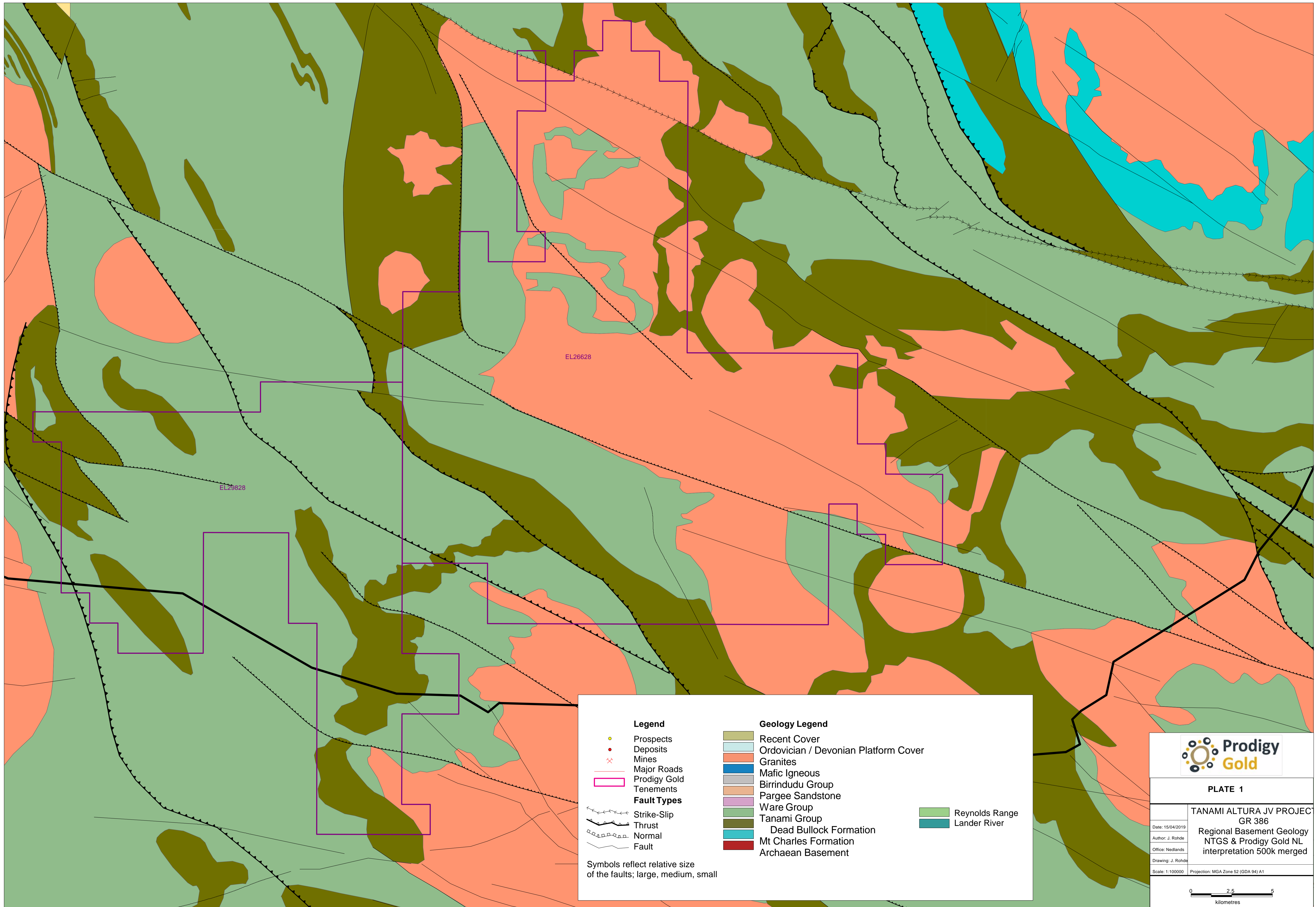
Lambeck A, Huston DL, Maidment D and Southgate PN, 2008. Sedimentary geochemistry, geochronology and sequence stratigraphy as tools to typecast stratigraphic units and constrain basin evolution in the gold mineralised Palaeoproterozoic Tanami Region, Northern Australia. *Precambrian Research* 166, 185–203.

Rohde, J, 2016. Group Annual Report for Exploration Licences 26628 and 29828, Tanami Altura JV Project, GR –386 from 1 March 2015 to 28 February 2016. ABM unpublished Report for the Northern Territory Department of Primary Industry and Resources.

Rohde, J, 2017. Group Annual Report for Exploration Licences 26628 and 29828, GR 386, Tanami Altura JV Project, from 1 March 2016 to 28 February 2017. ABM unpublished Report for the Northern Territory Department of Primary Industry and Resources

Rohde, J, 2018. Group Annual Report for Exploration Licences 26628 and 29828, GR 386, Tanami Altura JV Project, from 1 March 2017 to 28 February 2018. ABM unpublished Report for the Northern Territory Department of Primary Industry and Resources

Schmid, S. Feb. 2019, Geochemical classification of the Tanami Group stratigraphy in the Bluebush area, Northern Territory, CSIRO EP: 19959. A report for Prodigy Gold NL



Legend		Geology Legend	
	Prospects		Recent Cover
	Deposits		Ordovician / Devonian Platform Cover
	Mines		Granites
	Major Roads		Mafic Igneous
	Prodigy Gold Tenements		Birrindudu Group
	Fault Types		Pargee Sandstone
	Strike-Slip		Ware Group
	Thrust		Tanami Group
	Normal		Dead Bullock Formation
	Fault		Mt Charles Formation
			Reynolds Range
			Lander River

Symbols reflect relative size of the faults; large, medium, small

PLATE 1	
TANAMI ALTURA JV PROJEC GR 386	
Regional Basement Geology NTGS & Prodigy Gold NL interpretation 500k merged	
Date: 15/04/2019	Author: J. Rohde
Office: Nedlands	Drawing: J. Rohde
Scale: 1:100000	Projection: MGA Zone 52 (GDA 94) A1

