

Figure 4A

MAG_TMI_1VD
(MGA94z53)

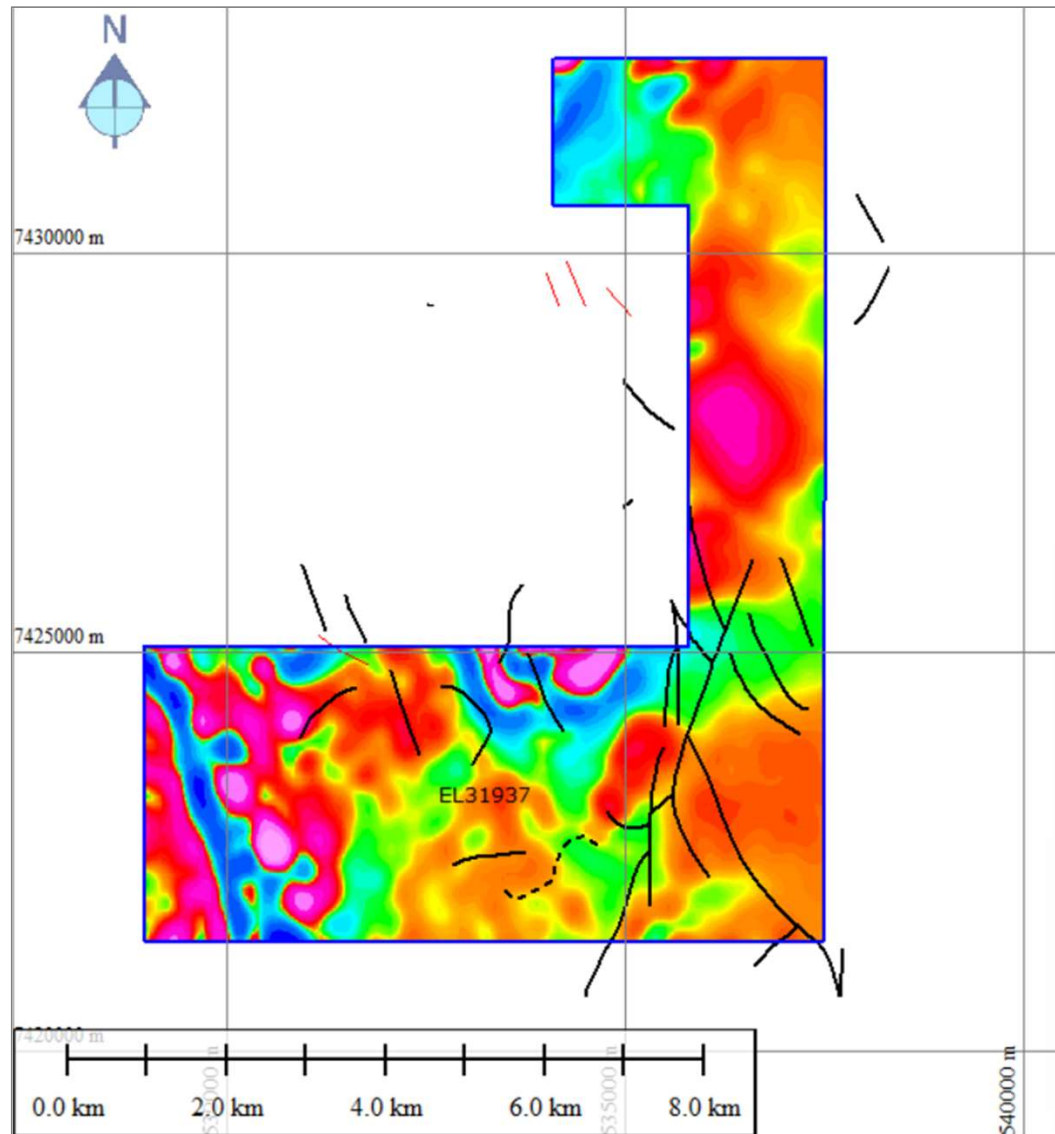


Figure 4B

MAG_TMI_AS
(MGA94z53)

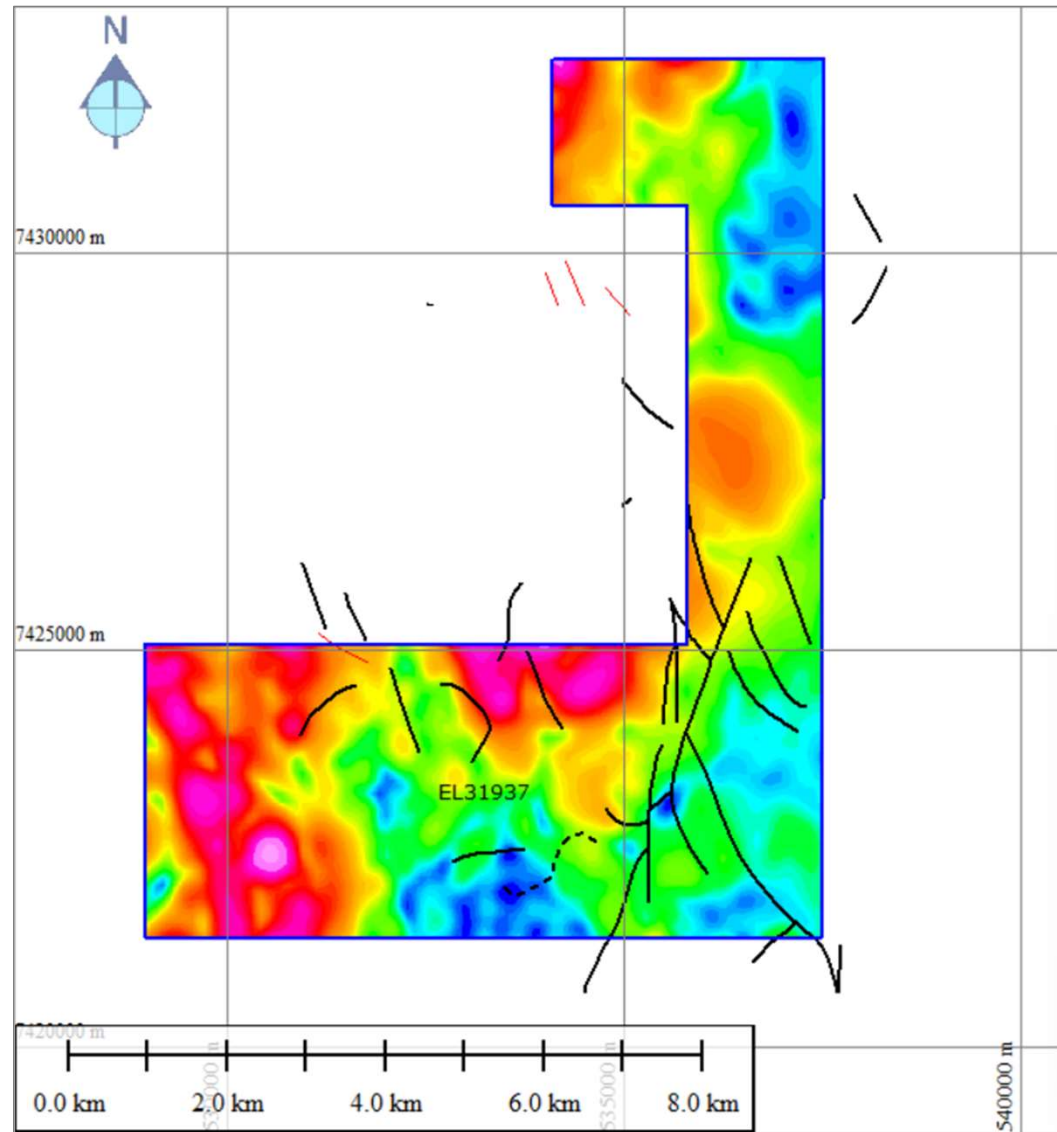


Figure 4C

MAG_TMI_Bzz
(MGA94z53)

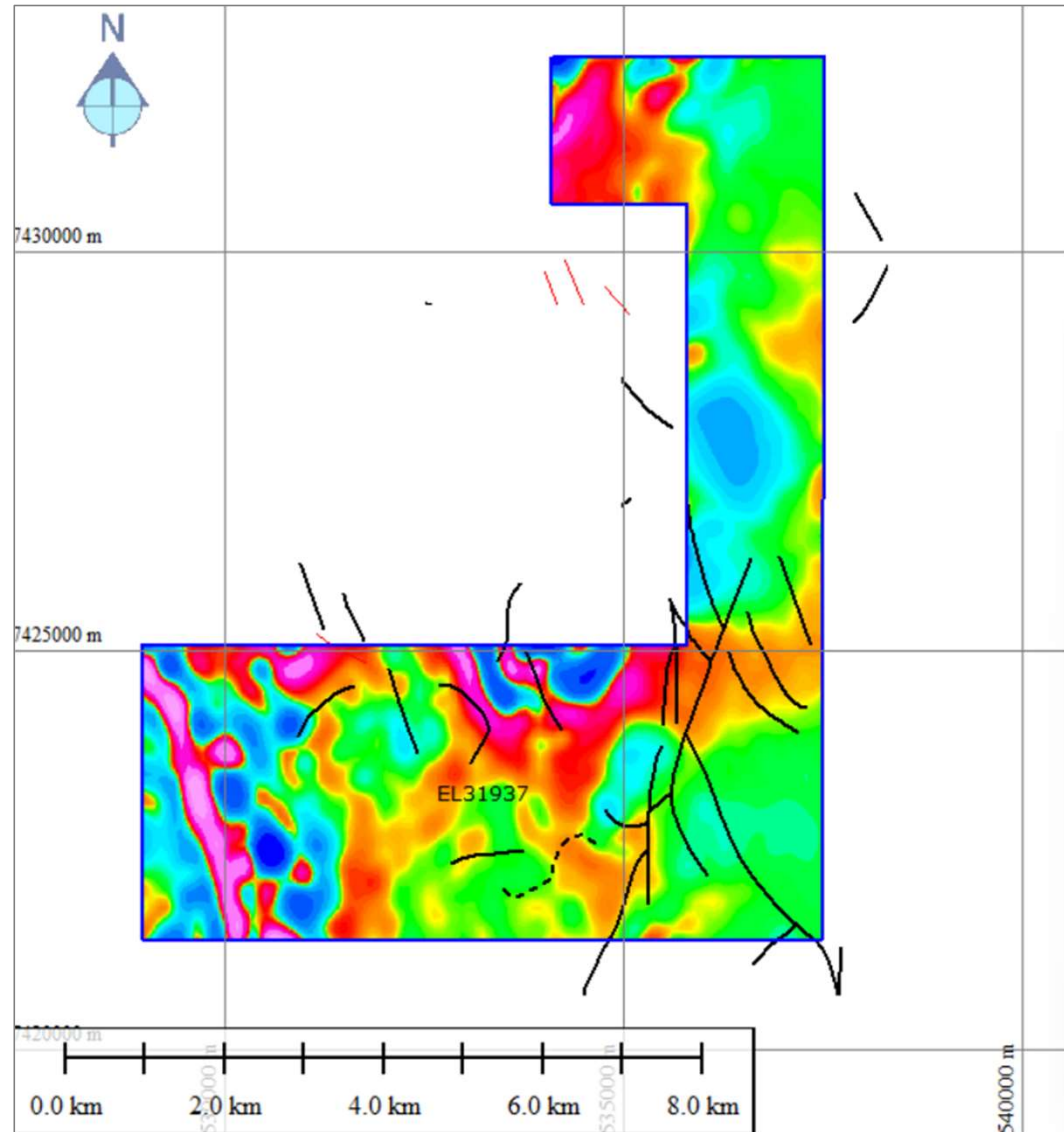


Figure 4D

MAG_TMI_UC_0-500m
(MGA94z53)

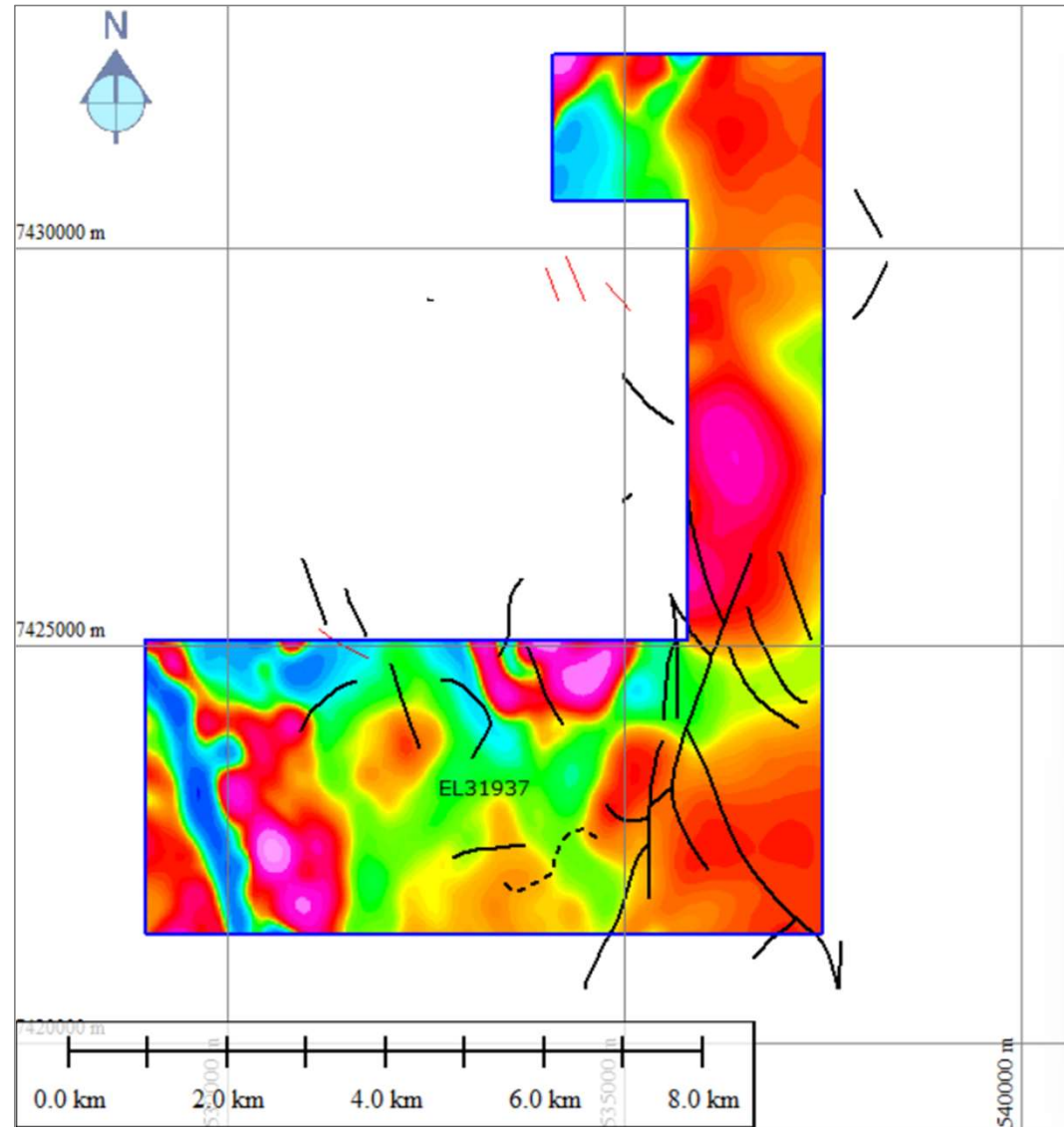


Figure 4E

RAD_U_Conc_Filt
(MGA94z53)

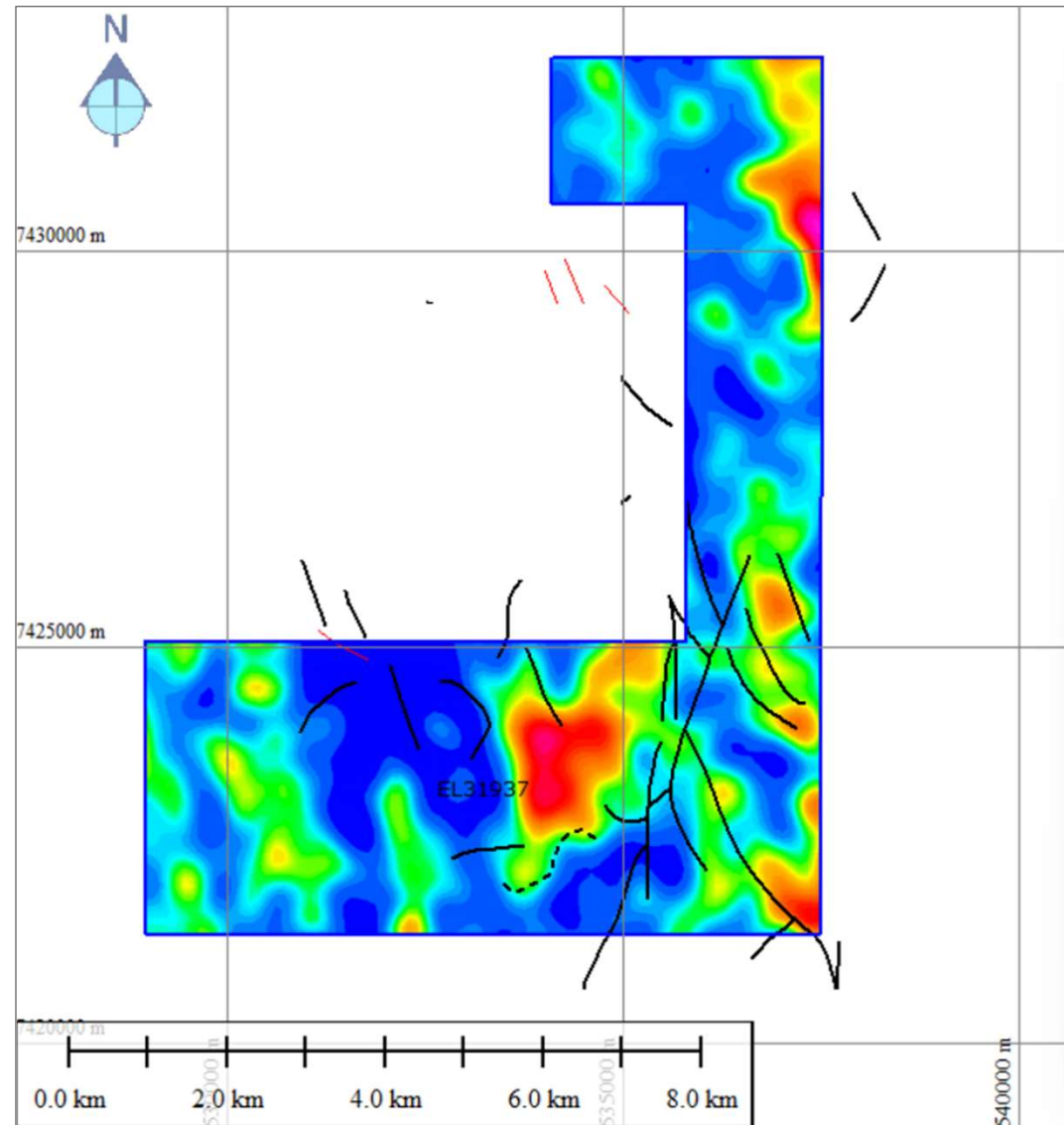


Figure 4F

RAD_TH/K Ratio
(MGA94z53)

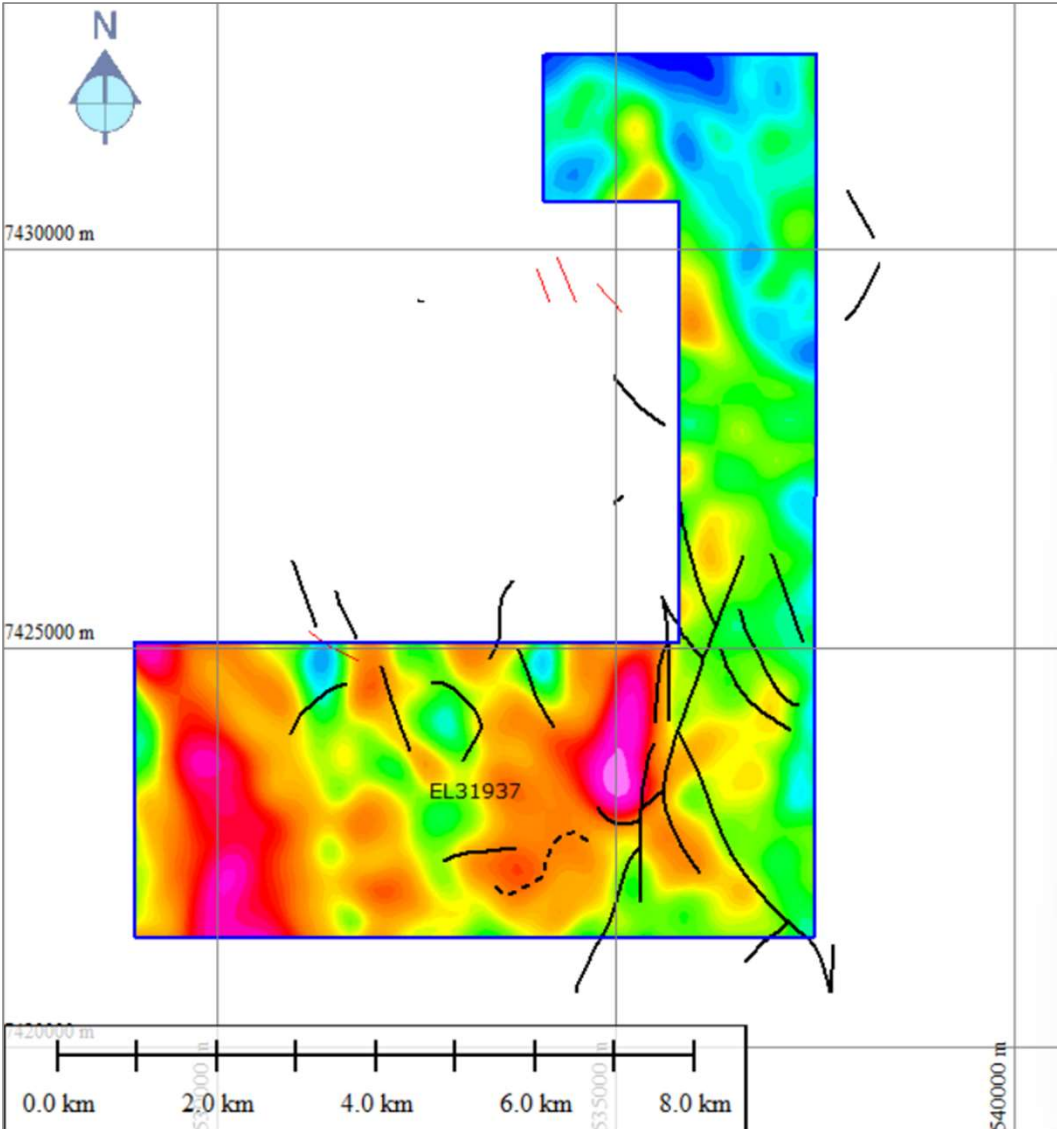


Figure 4G

GRAV_SCBA
(MGA94z53)

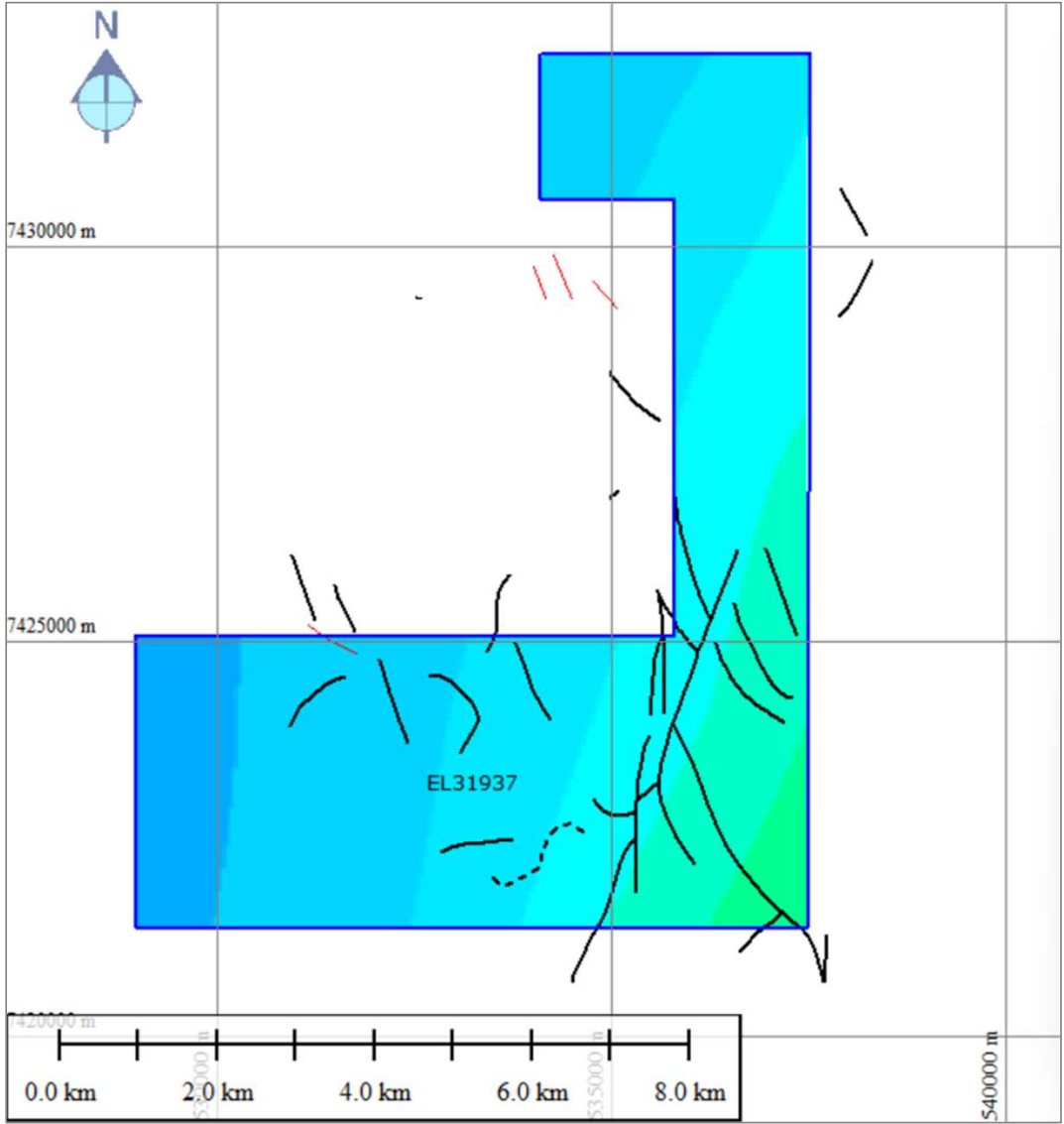


Figure 4H

GRAV_SCBA_1VD
(MGA94z53)

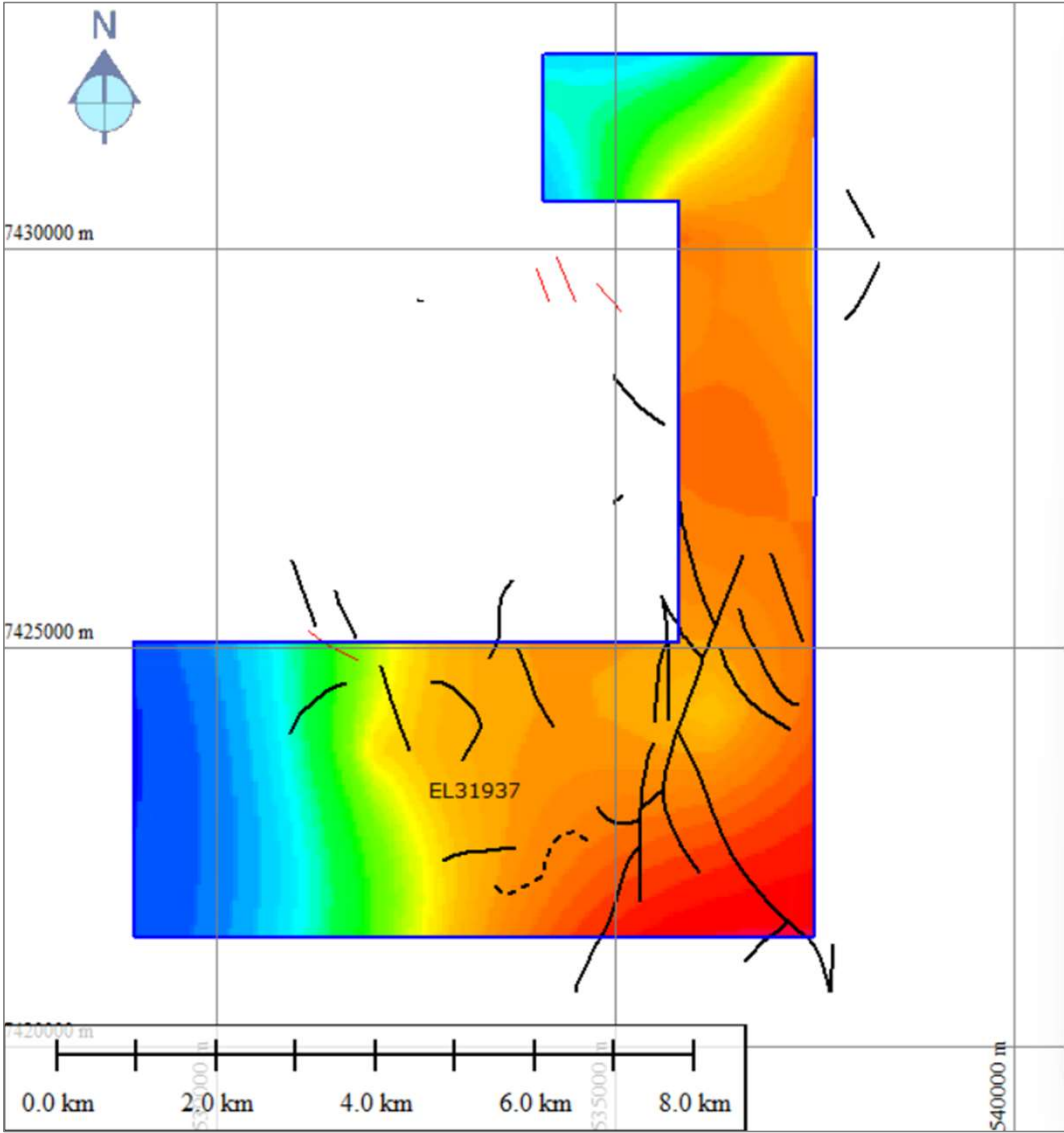
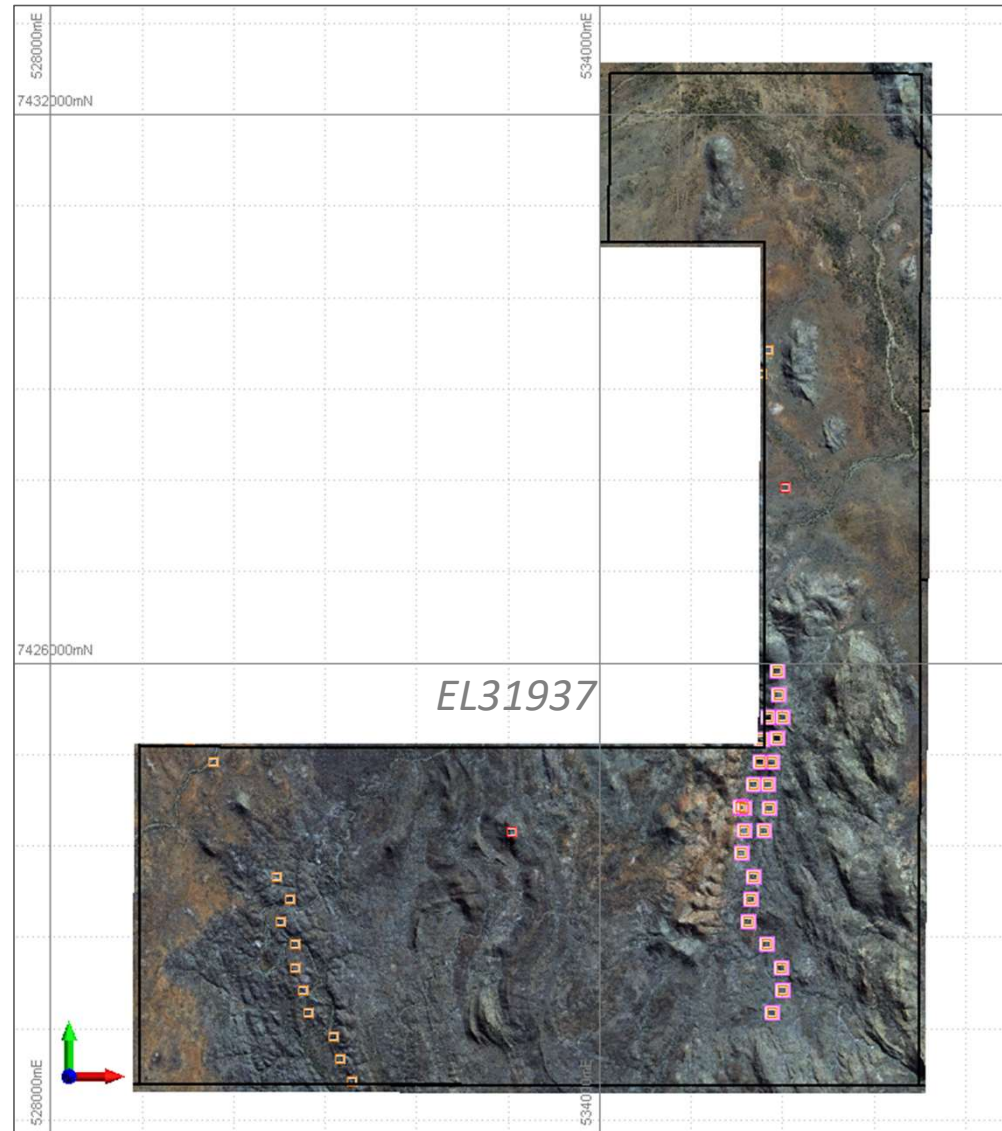


Figure 5A



VTEM anomaly picks by ranking
Very High – pink
High – Red
Moderate - Orange
(MGA94z53)

Figure 5B

Location of gossans and
gossanous float
TMI-RTP-HSI backdrop

(MGA94z53)

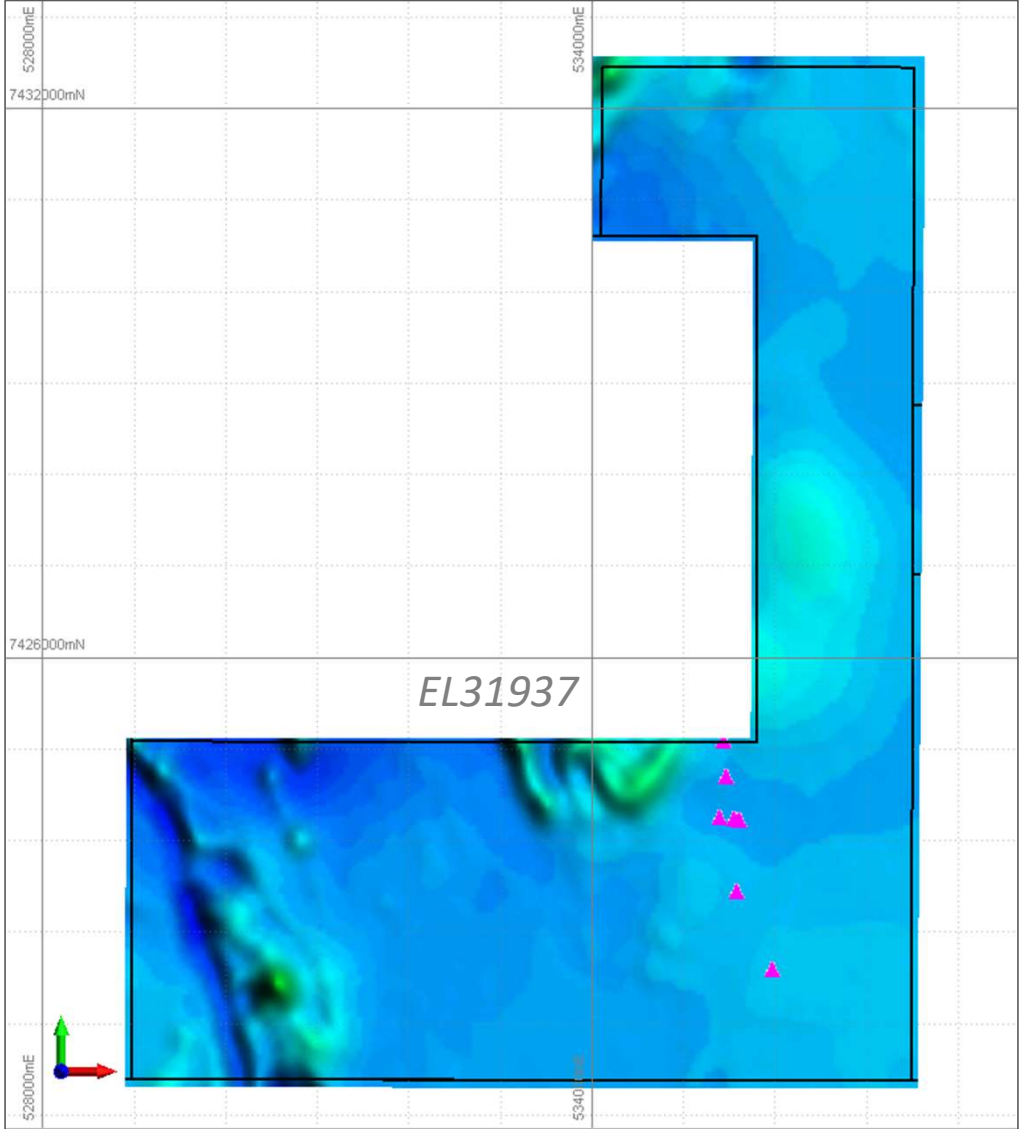


Figure 5C

Location of hydrothermal veining
TMI-RTP-HSI backdrop
(MGA94z53)

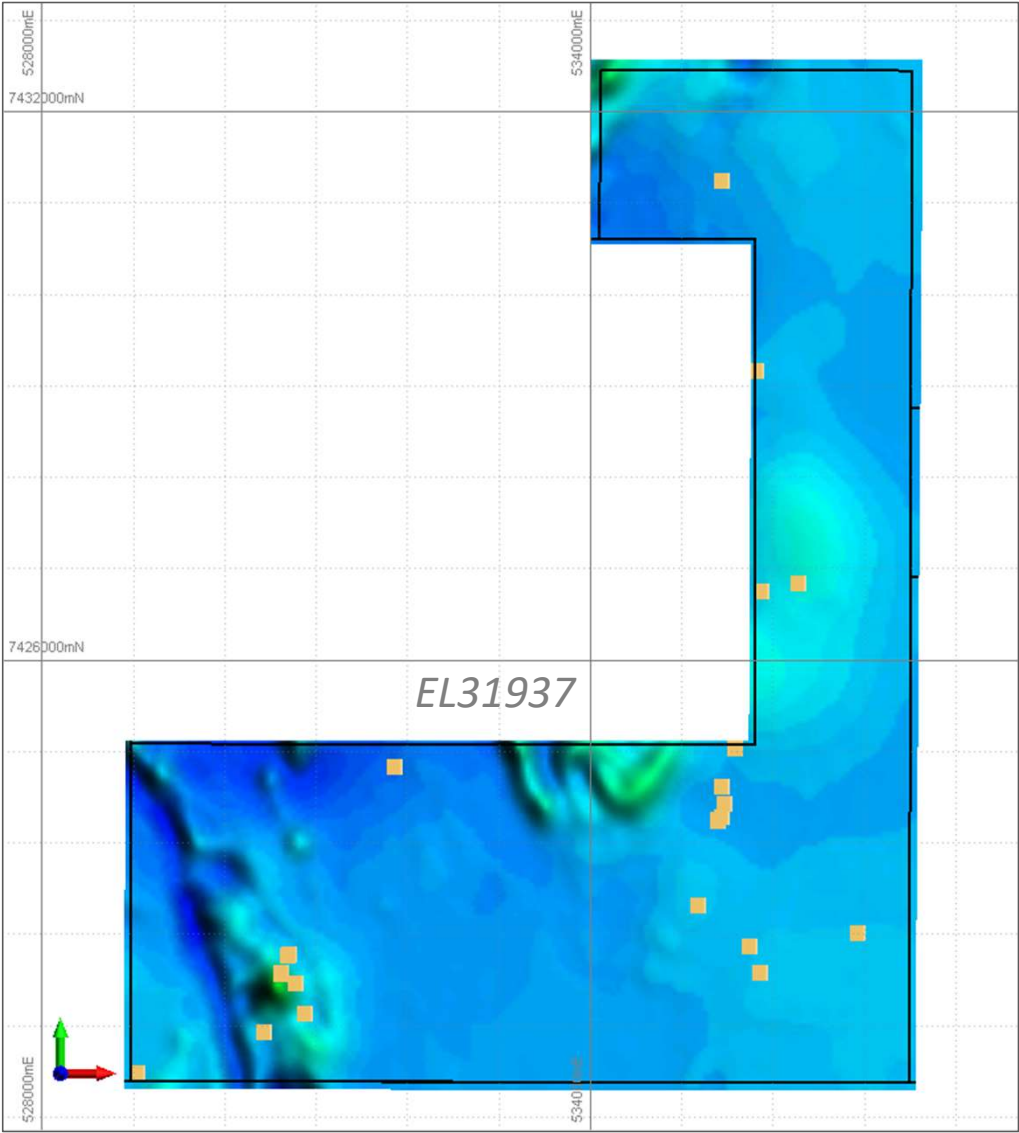


Figure 6A

*Ni rock-chip values
(>100ppm Ni)
(MGA94z53)*

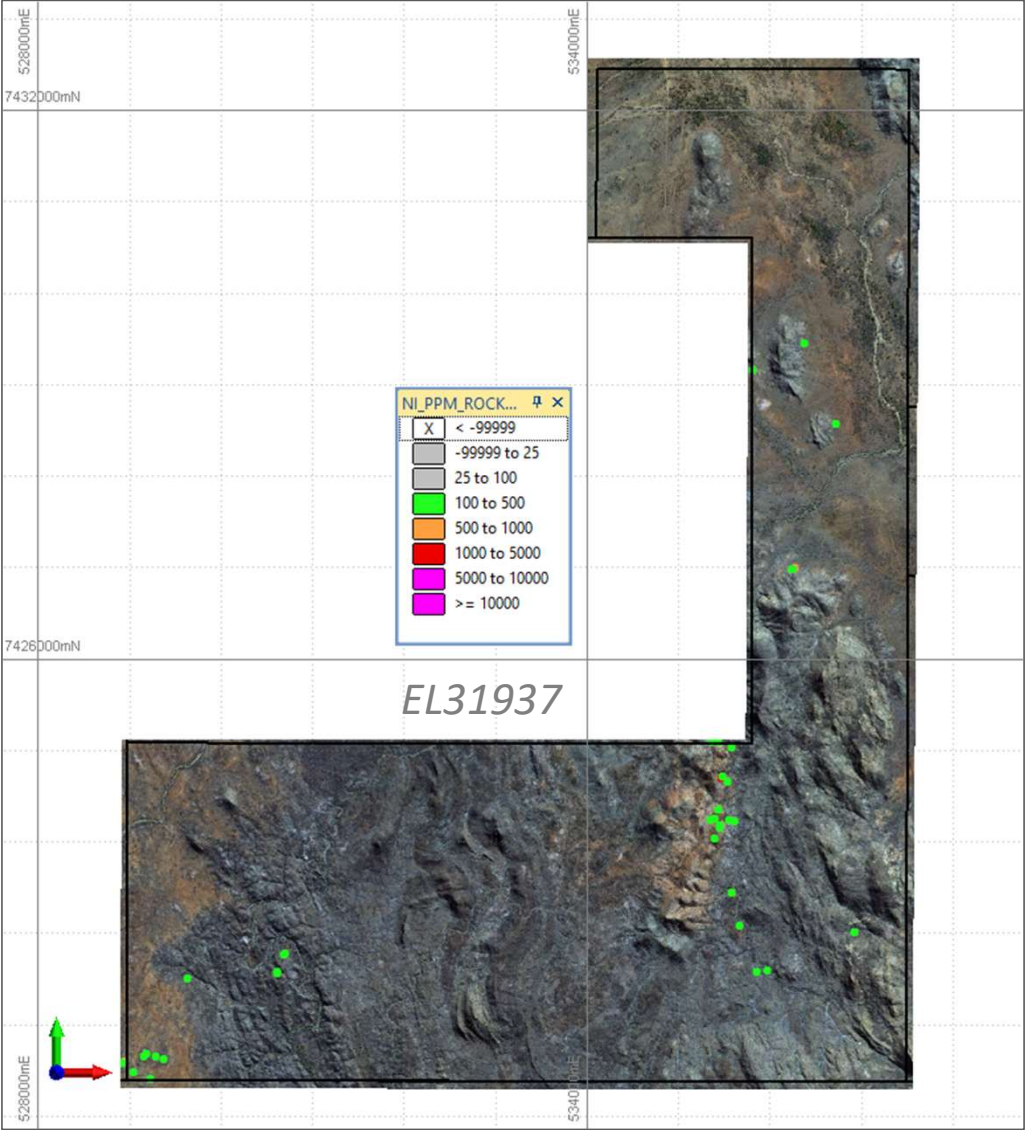


Figure 6B

Co rock-chip values
(>100ppm Co)
(MGA94z53)

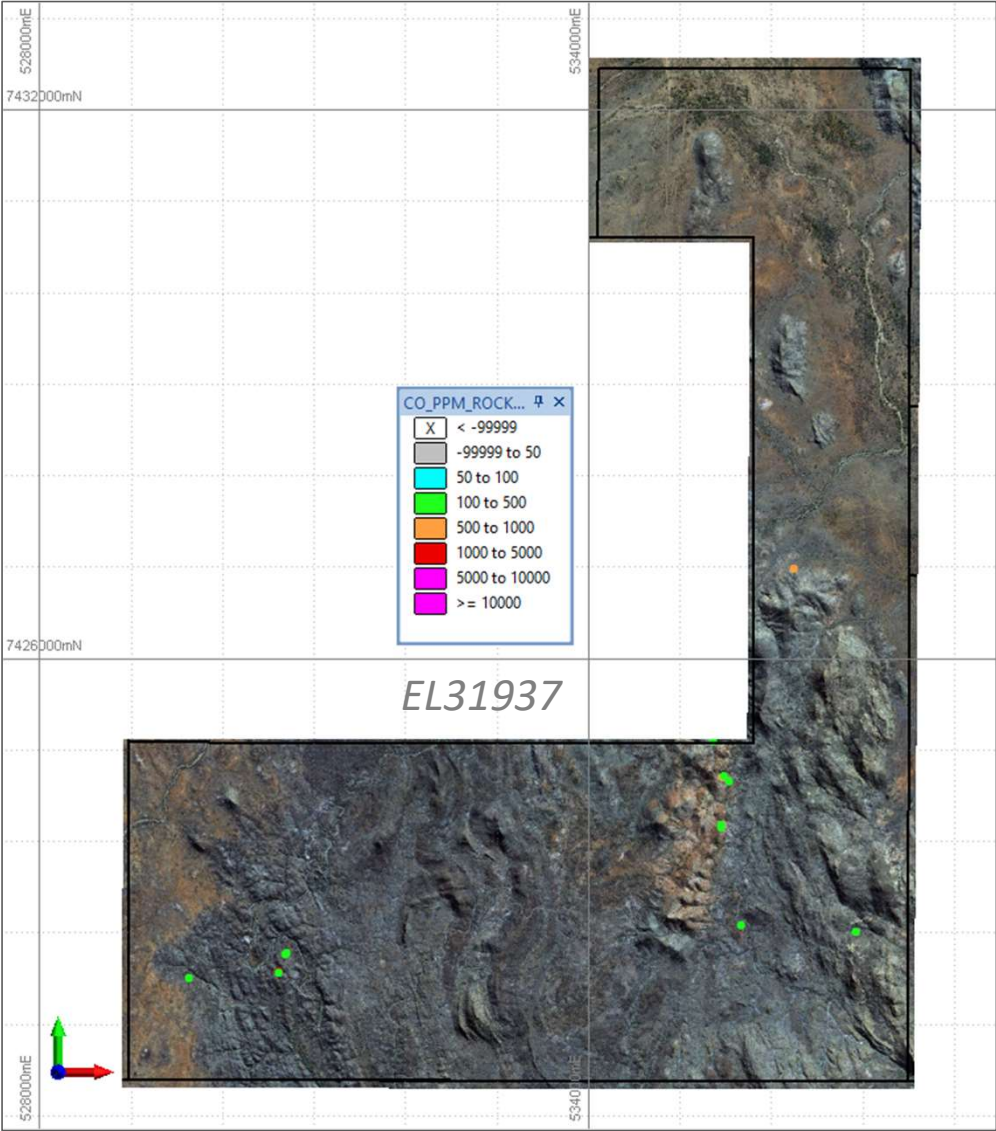


Figure 6C

*Cu rock-chip values
(>100ppm Cu)
(MGA94z53)*

