

LITHIUM PLUS

Deep Ground Penetrating Radar – Byone Li Pegmatite Project

September 2018 survey

Private and confidential

Project – Methodology

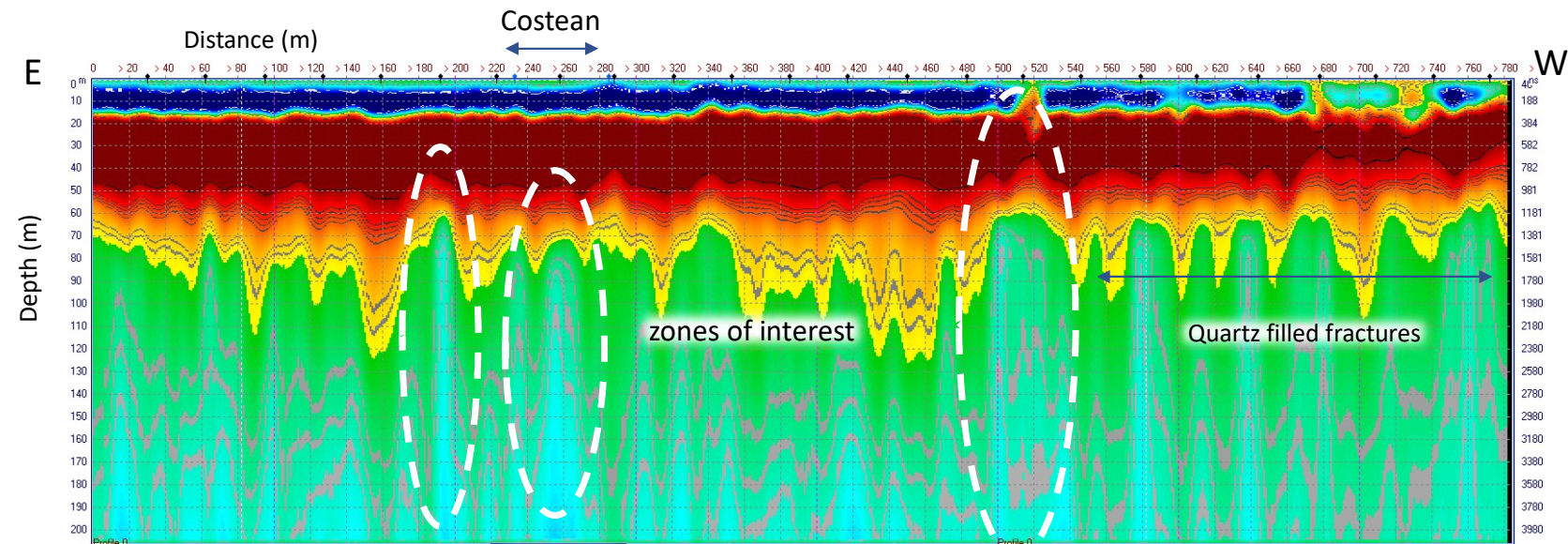


Acquisition by Loza N

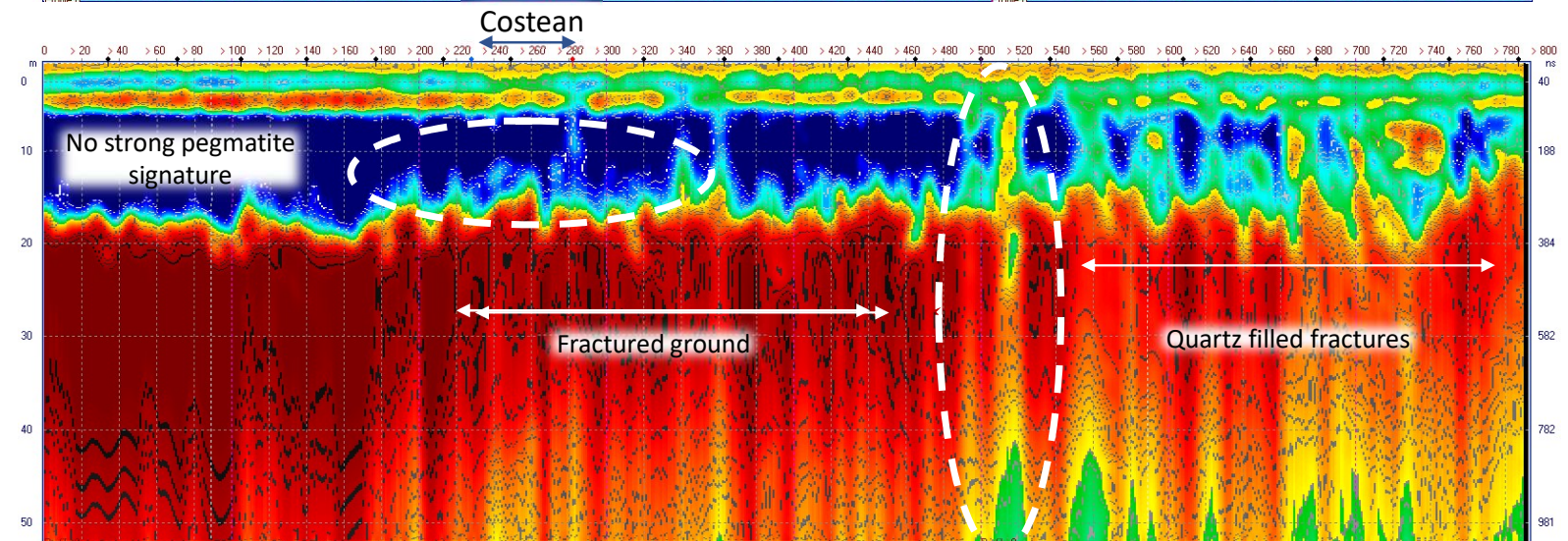
- 21MW transmitter
- 25Mhz
- 6m antennae's
- 200 m depth and 50m depth

LITHIUM PLUS – Line PSV1

Line PSVL1 (200m depth)

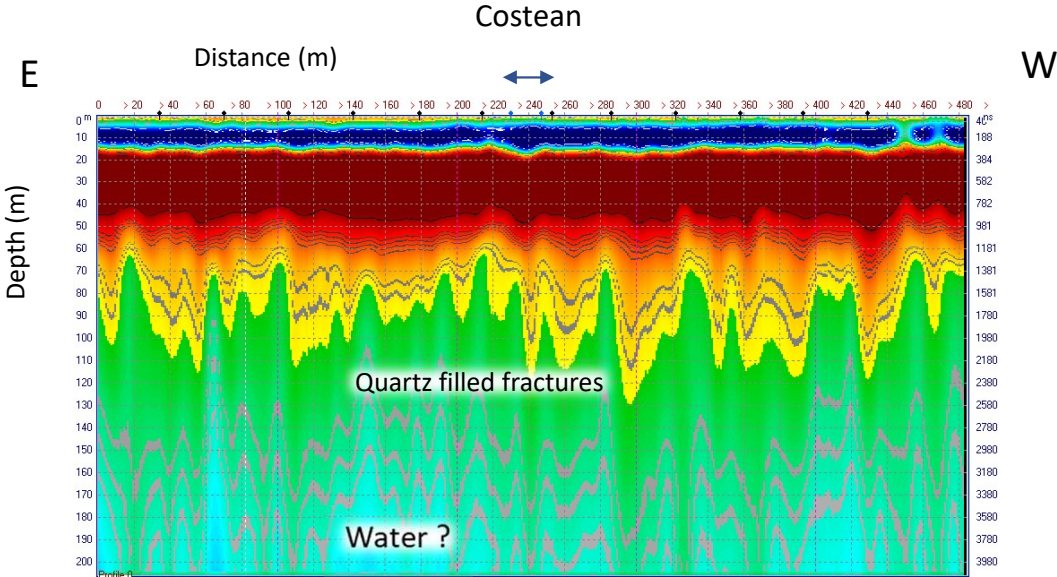


Line PSVL1_50 (50m depth)

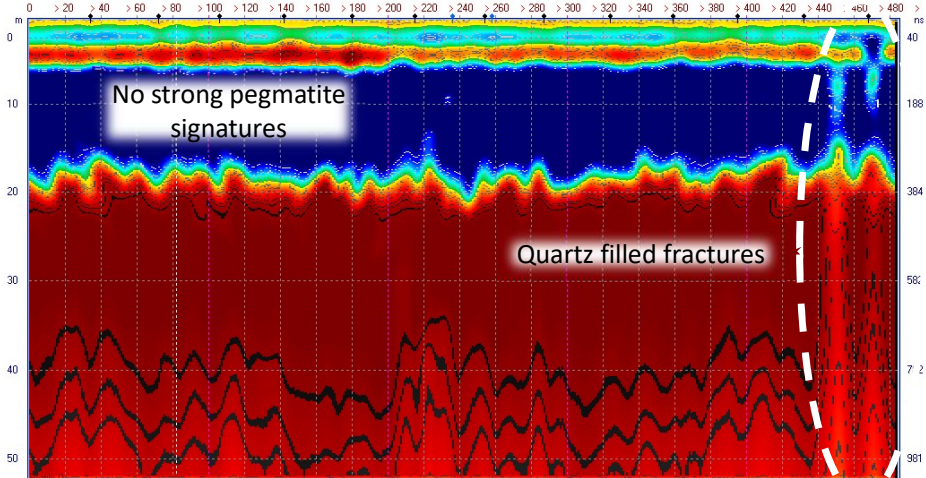


LITHIUM PLUS – Line PSV2

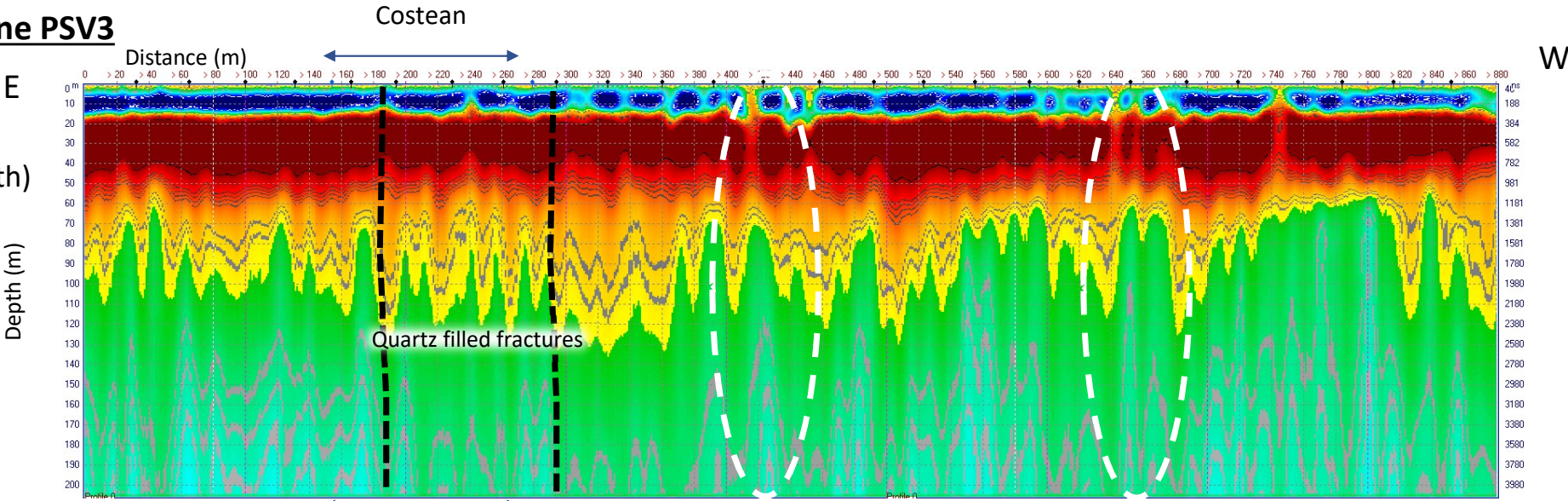
Line PSVL2 (200m depth)



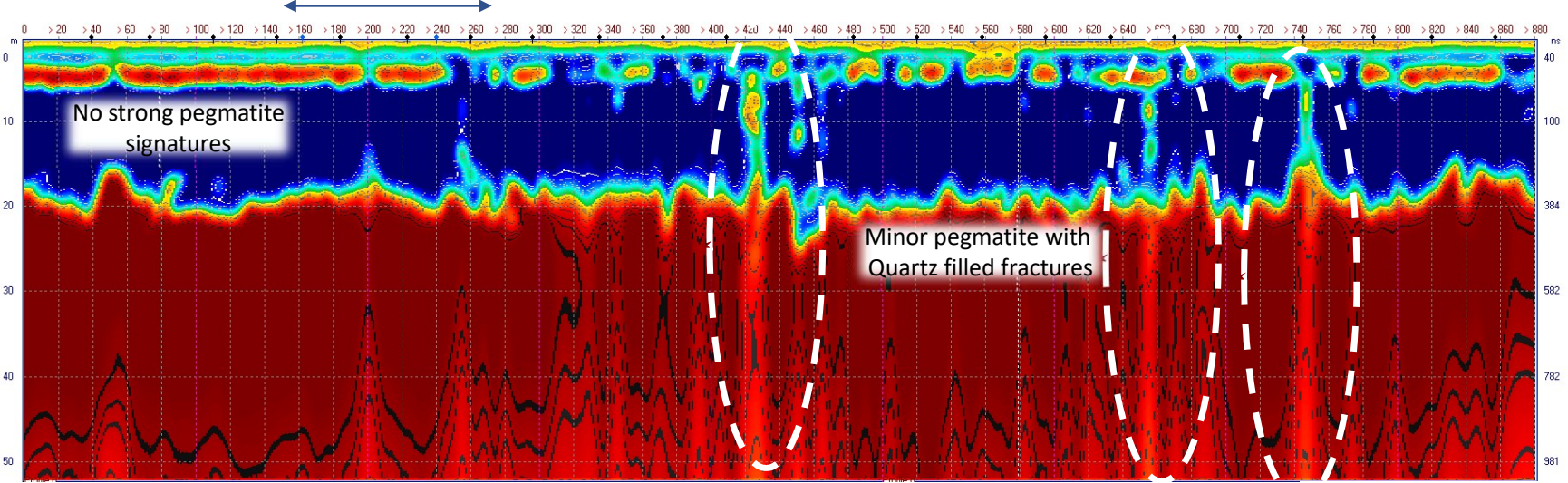
Line PSVL2_50 (50m depth)



LITHIUM PLUS – Line PSV3



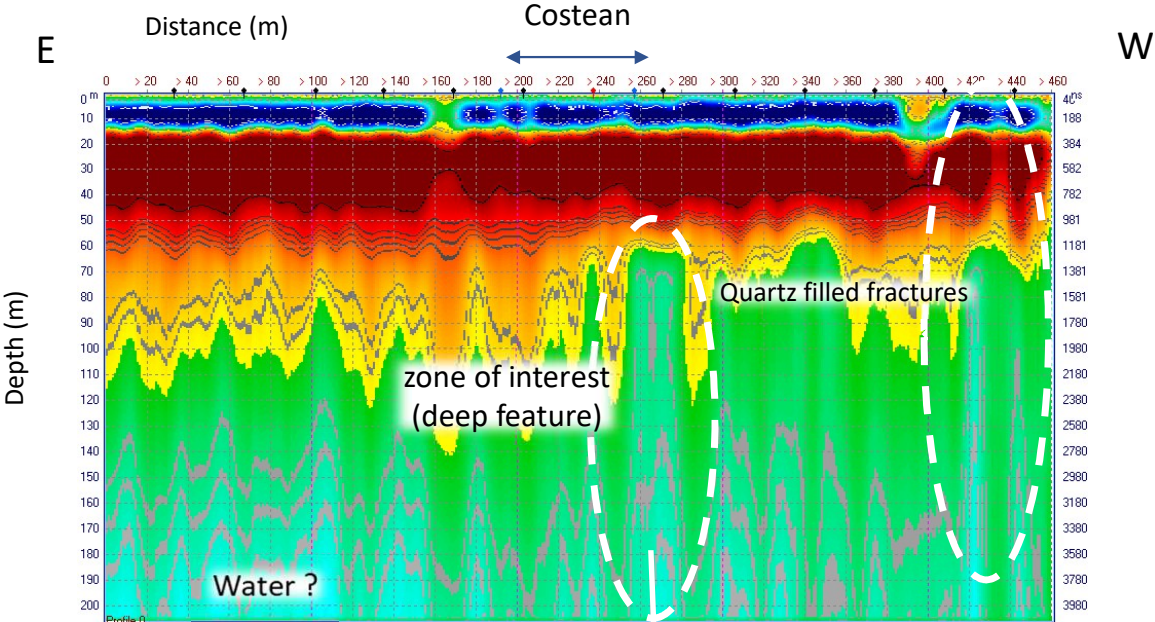
Line PSVL3 (200m depth)



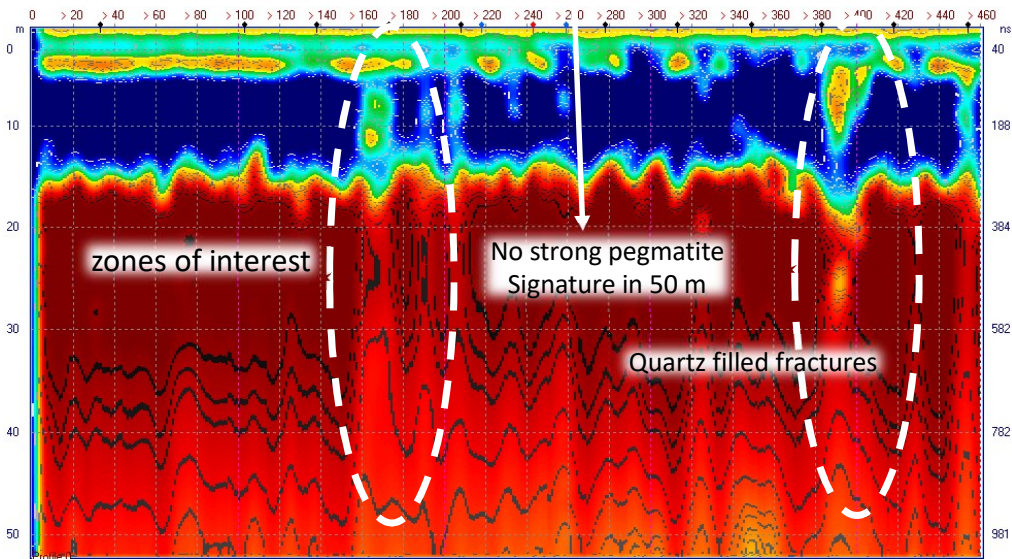
Line PSVL3_50 (50m depth)

LITHIUM PLUS – Line PSV4

Line PSVL4 (200m depth)

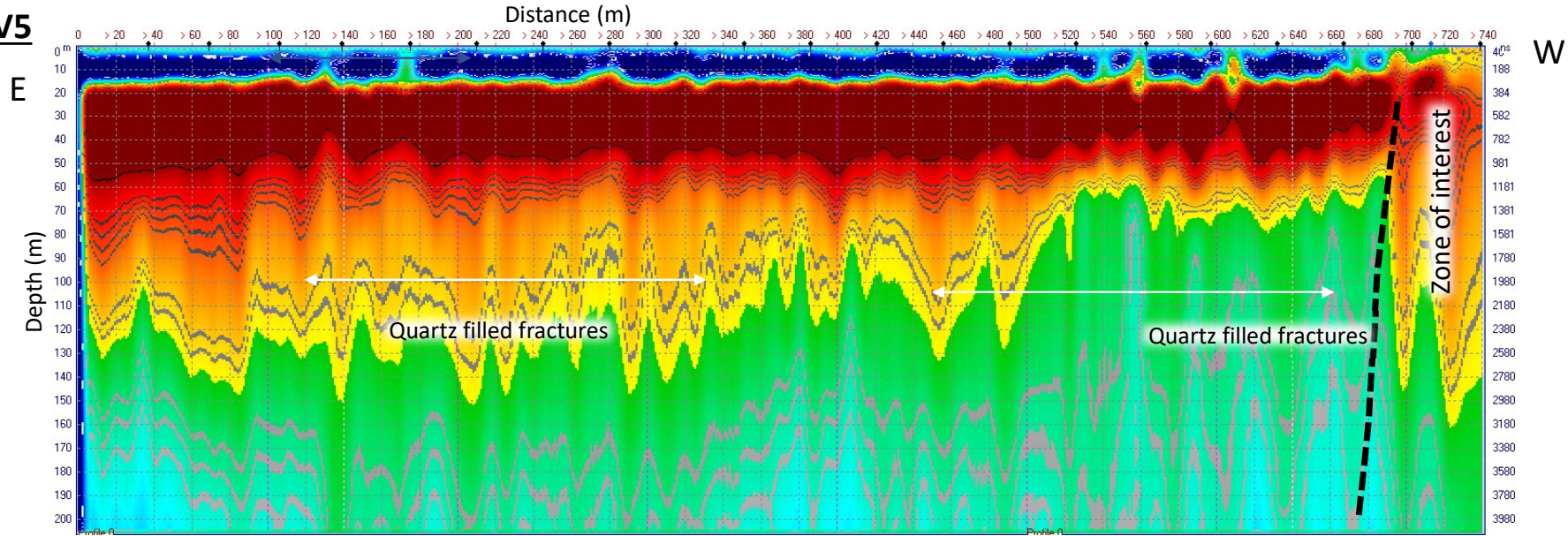


Line PSVL4_50 (50m depth)

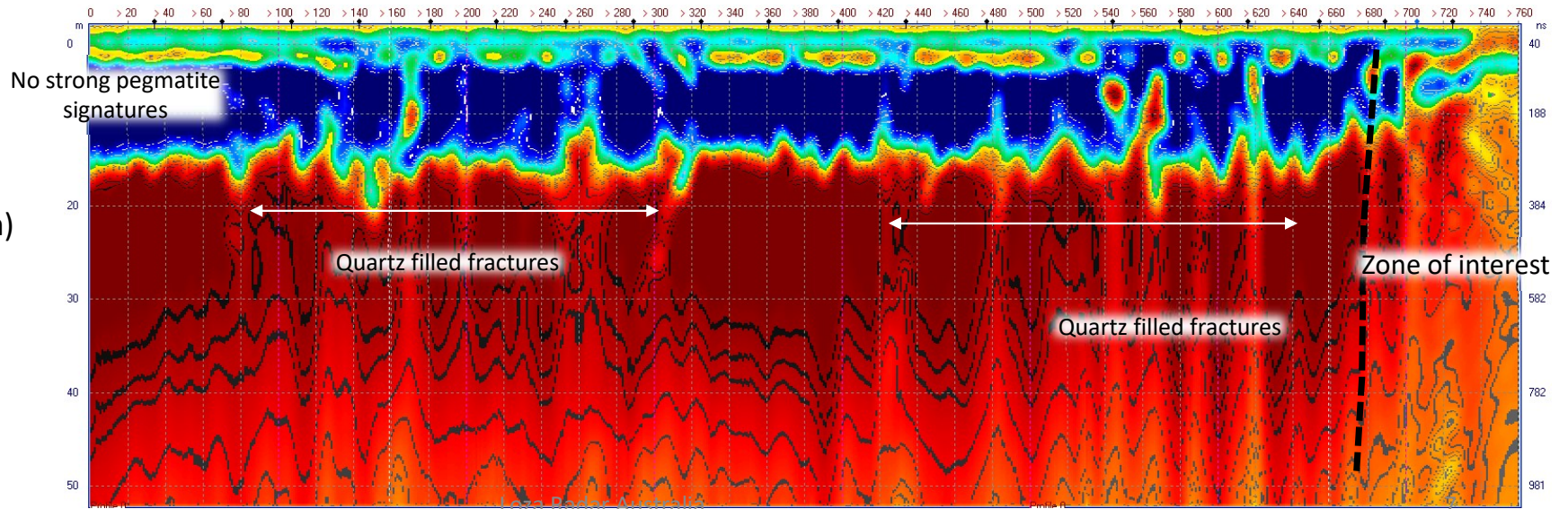


LITHIUM PLUS – Line PSV5

Line PSVL5 (200m depth)

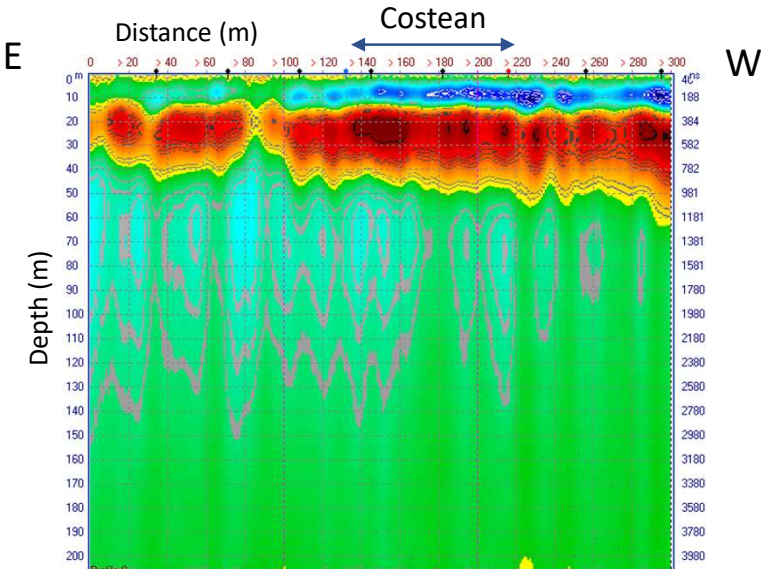


Line PSVL5_50 (50m depth)

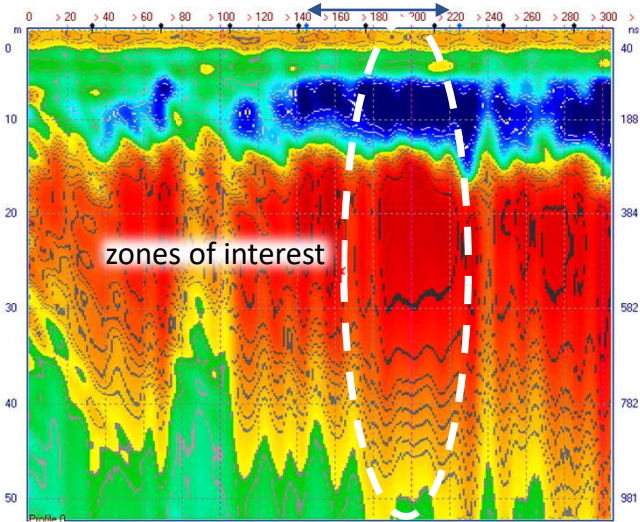


LITHIUM PLUS – Line JL1

Line JL1 (200m depth)



Line JL1_50 (50m depth)



Additional lines required to obtain further
dgpr properties in this area



EXPLORATION WITH VISION

Derek Reeves: derek@lozadar.com

Direct number: +61 (0) 439 770 601

www.worldwidegeological.com.au

