
ANNUAL AND FINAL REPORT OF EL28765

BIRRINDUDUBASIN

PERIOD 22nd November 2011 to 21st November 2018

VICTORIA RIVER DOWNS PROJECT NT

Victoria River Downs SE52-04 1:250,000

Victoria River Downs 5165 1:100,000

Titleholder: Australia Mining and Gemstone Co. Pty Ltd

Report No. 2019-01

Australia Mining and Gemstone Co. Pty Ltd

By Mingjin HOU/Shi HUANG

04th January 2019

CONTENTS

1. SUMMARY	1
2. LOCATION AND ACCESS	2
3. TENEMENT STATUS AND OWNERSHIP	4
4. GEOLOGY	5
5. PREVIOUS EXPLORATION	10
6. EXPLORATION DURING YEAR 1	12
7. EXPLORATION DURING YEAR 2	12
8. EXPLORATION DURING YEAR 3	12
9. EXPLORATION DURING YEAR 4	14
10. EXPLORATION DURING YEAR 5	14
11. EXPLORATION DURING YEAR 6	14
12. EXPLORATION DURING YEAR 7	14
13. EXPENDITURE	14
14. CONCLUSION AND RECOMMENDATIONS	15
15. REFERENCES	15

List of Figures

Figure 1 Location Map of EL28765	3
Figure 2 Graticular blocks covering EL28765	4
Figure 3 Landholders and Lease Numbers displayed inside EL28765	5
Figure 4 Geological Map of EL28765	9
Figure 5 Compilation of historical data of EL28765	14

List of Tables

Table 1 Graticular blocks covering EL28765	4
Table 2 Local stratigraphic columns	8
Table 3 Expenditure on EL28765	14

1. SUMMARY

The Victoria River Downs Project area is in the Northern Territory of Australia and situated about 450 kilometers south of Darwin. The project is made up of 5 exploration licenses, EL28765 lie southeastern, and this EL's area is 148.26 square kilometers at the first year, after twice reduce, the area is just 13.17square kilometers (4 blocks). Vehicle access to the project area is via the Victoria, Buchanan and Buntine Highways, thence station tracks.

The Proterozoic Victoria River Basin (VRB) consists of a 3.5km thick stratigraphic sequence of sandstone, shale and dolomitic sediments, covering an area of 160,000sq kms, overlying the Birrindudu Basin and has the potential for sedimentary hosted zinc dominated base metal deposits similar in style to the giant McArthur River, Cannington and Century deposits. The Bullita stratigraphic succession is considered to have potential to host stratiform sedimentary, Mississippi and Irish lead-zinc styles of mineralization. These deposits are associated with the fine-grained clastic rocks (black shales) of a sedimentary package, which contains substantial dolomites and limestones, and are located near major regional structures with a halo of lead anomalism. The target size is in the order of 30-50 million tones at 10% combined Pb/Zn.

Age dating within these sequences suggest dates from 1,645my (Limbunya Group) to 1,610 – 1,570my (Bullita Group), which is within the age range of all major Australian SEDEX zinc deposits.

Throughout the Victoria River Basin, the stratigraphy is generally flat lying or shallow dipping. However, there are several localized domes features adjacent to prominent faults or lineaments.

Previous base metal explorers include BHP, CRA, Rio Tinto, Anaconda, Anglo plus junior companies and diamond exploration has been undertaken by Stockdale, BHP and Ashton. These exploration programs for base metals include stream sediment sampling, Geotem and aeromagnetic surveys. Limited stratigraphic diamond drilling

has been undertaken by BMR, NTGS and various exploration companies. A total of about 10 stratigraphic holes have been drilled around that lease.

In the past few years, Anglo Australian Resources NL(AAR) hold this area, AAR has reprocessed geochemical data and Geotem, gravity, aeromagnetic and Landsat images for generating new exploration target in this area. BHP previously flew Geotem over about 20 percent of the VRB project area but conducted no significant ground follow up. This data has been reviewed by Southern Geoscience geophysical consultants identifying 17 prospective Geotem conductors at the north of EL28765, AAR included stream sediment, soil, rock chip sampling programs and helicopter-supported gravity survey. This work has been successful in that the stream sediment samples have confirmed the robustness of previous anomalies identified and highlighted prospective areas of interest in the vicinity of the Victoria River Downs Homestead.

EL28765 is granted in November 2011, Australia Mining and Gemstone Co. Pty. Ltd (AMG) collated and replotted historic data in MapInfo. During the August 2012, AMG staff entered the northern part of the lease along the station track to implement reconnaissance. Because the Wickham River and Fisher Creek cross the lease, so floodplain is developed, it is covered with thick colluvium or alluvium soil in the eastern area of the lease.

In 2018, Due to the investment adjustment and the budget reduce of our company, AMG finally decided to surrender EL28765.

2. LOCATION AND ACCESS

EL28765 is located 450 kilometers south of Darwin in Victoria River Downs ranges, about 240 kilometers southwest of Katherine in the Northern Territory (Figures 1).

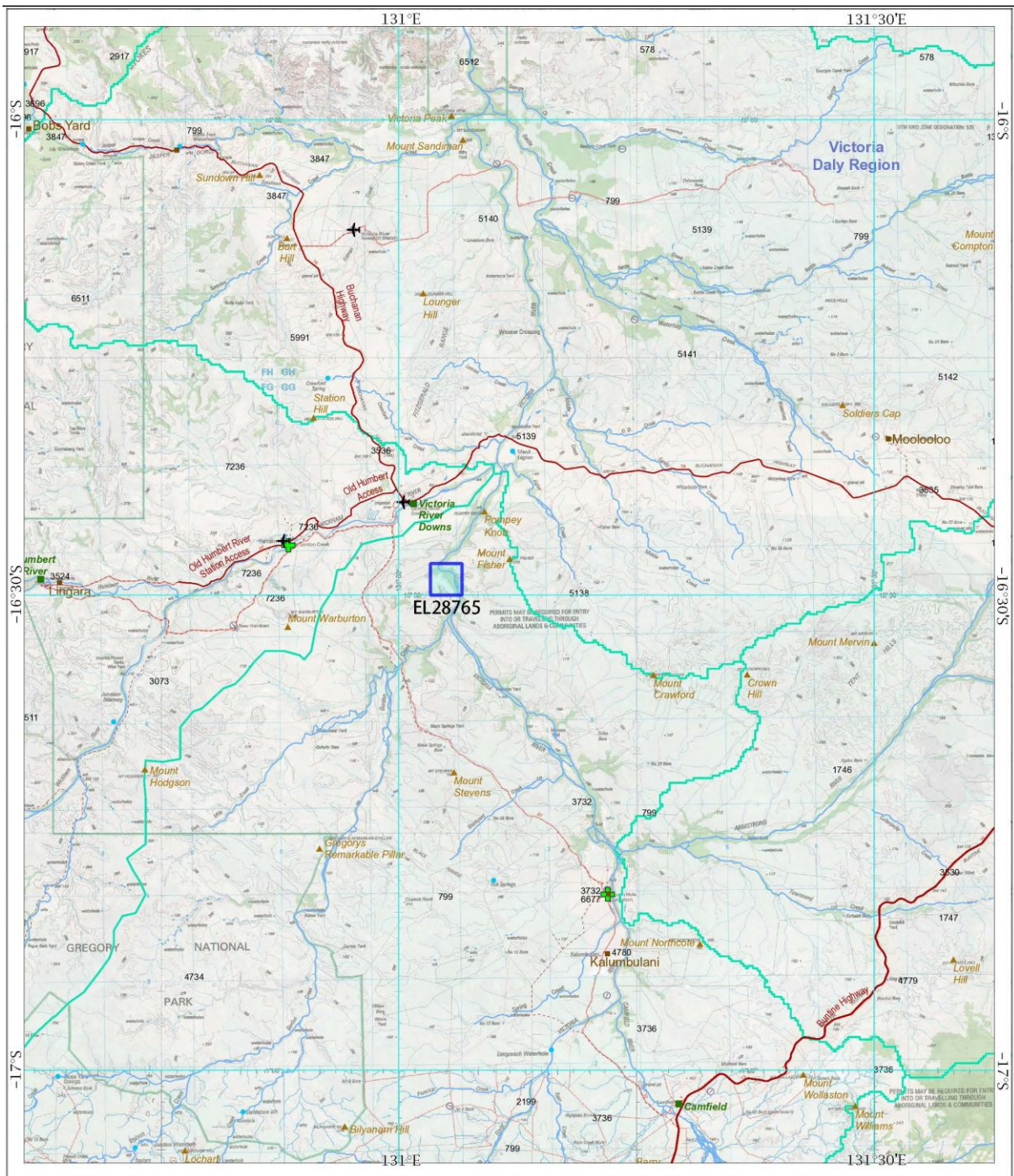


Figure 1 Location Map of EL28765

The project area is accessible from Darwin via the sealed Victoria River Highway and the unsealed Buchanan and Buntine Highways, and is situated on the Victoria River Downs 250,000 sheet (SE52-04). Station tracks provide four-wheel drive access to the project area, much of which is essentially inaccessible, except via helicopter.

The wet season normally lasts from November to March. The annual rainfall ranges

from 38-51centimeters. The evaporation rate is 260 centimeters per annum. The daily maximum temperature usually exceeds 38 degrees Celsiusduring the summer days. In July the daily temperature range is 10-27 degrees Celsius. The six-month exploration field season usually extends from April to September.

3. TENEMENT STATUS AND OWNERSHIP

EL28765 was grantedtoAustralia Mining and Gemstone Co. Pty Ltd on 22th November 2011 for a term of six years, comprises 45 graticular blocks (148.26 sqkms, Figure 2). Second Year reduction was undertaken with 17 blocks retained, 28 blocks were dropped. Fourth Year reduction was undertaken with 8 blocks retained, 9 blocks were dropped. Sixth Year reduction was undertaken with 4 blocks retained, 4 blocks were dropped. There are no other mining leases or mineral claims within the License area. List of Graticular blocks covering EL28765 in Table 1.

Table 1 Graticular blocks covering EL28765(blue blocks retained)

SE52421S	SE52421T
SE52421X	SE52421Y

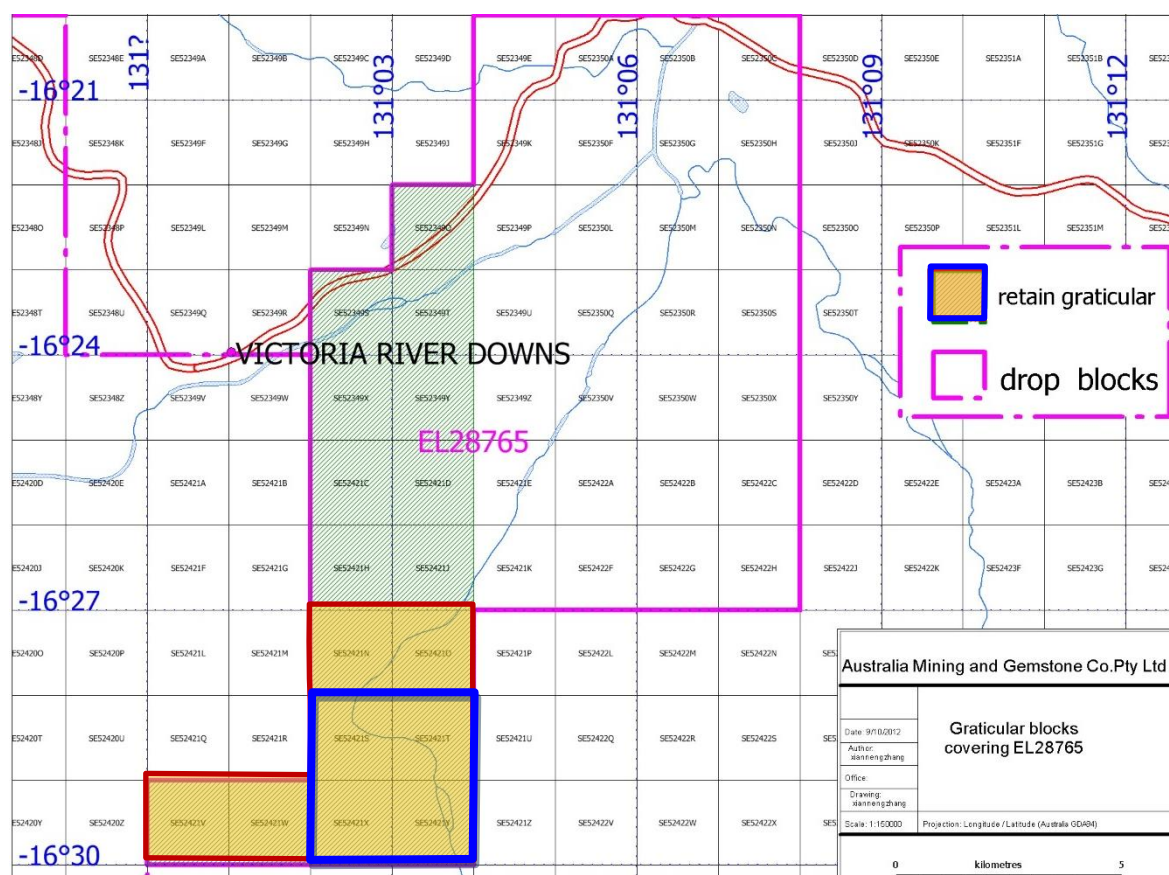


Figure 2: Graticular blocks covering EL28765

The project area is in the Victoria River region, whole within the Victoria River Basin (VRB), which overlies the basementSturtblock and consists of a 3.5km thick sequence of little deformed sedimentary rocks that cover ~160,000sqkms.

The stratigraphic sequence from the basement InveryMetamorphicmand Pine Creek volcanic upwards, consists of the Proterozoic Birrindudu and Limbunya Group sediments which form the lower Birrindudu Basin, which is overlain by the sediments of the Victoria River Basin consisting of the Wattie, Bullita, Tijunna and Avergne Groups.

The VRB is bounded to the northwest by the Fitzmaurice mobile zone, to the southwest by the Ord Basin, to the south by the Carpentarian Birrindudu Basin, and to the southeast by Paleozoic Wiso Basin, to the Northeast by the Pine Creek geosyncline.

Birrindudu Basin was accompanied by regionally extensive north-trending growth faults. Deposition in both Birrindudu and Victoria river Basins includes several phases of intra-cratonic sag. Strata dip away from the centers of depositional basins and is attributed to basement uplift.

The major structural elements are shown on the various 1:250,000 geological plans. This data has been supplemented by lineament studies completed from aeromagnetic, Geotem, gravity and Landsat data.

The imaged Geotem has enhanced the presence of a north trending 50km long by 5km wide structural corridor, which isn't evident from mapping or other geophysical surveys. For this study this feature has been referred to as the Victoria River Trough (VRT).

This structural corridor is truncated north and south by WNW trending regional lineaments, such as the Limbunya Fault in the south and, with sub-parallel Gill and GB faults. Other major structural directions include the NW, NE and E-W lineaments.

4.1.2 Regional Structure

Major anticlinal and synclinal structures with N-S orientated axial planes, have been

mapped at Bullita Station and the Fitzgerald Range near Victoria River downs. These may reflect extended periods of E-W compression that may have existed during deposition and post consolidation of the stratigraphic column.

This E-W stress regime may have generated E-W orientated extensional normal faults that may have existed during sedimentation to generate growth fault environments.

The McArthur River and Mississippi styles of base metal mineralization are strongly influenced by structure. Thus, it's essential that the major structural controls are well documented and robust geological models are generated for the evolution of the Victoria River Basin sedimentation as it has been influenced by faulting within the basement rocks.

4.1.3 Alternative Structural Models

Given the strong development of the NW (315 degree) trending lineaments, this fault orientation could be indicative of a Southeast – Northwest compression direction, which would generate normal faults and potentially growth faults in this orientation. This model fits the gross geometry of the stratigraphy with the oldest rock types outcropping in the Southwest and Younging towards the northeast i.e. a general northeast block down sense of displacement.

4.2 LOCAL GEOLOGY

4.2.1 Stratigraphy

The EL28765 area is in the Victoria River region, outcropping is a 3.5km thick sequence of little deformed sedimentary rocks that cover ~160,000sq kms. Quaternary and Cenozoic Unconsolidated Material was covered the northwestern of EL28765(Figure 4), Cambrian and Proterozoic sedimentary outcrop in southeastern and northern of EL (table 2).

TABLE 2 LOCAL STRATIGRAPHIC COLUMNS

Top

•Cambrian

Antrim plateau Volcanic (\in la), 250mthick, tholeiitic basalt and agglomerate, with minor sandstone, chert and limestone interbeds cover the whole region. Unconformable overlies the Proterozoic sequence.

•Lower Proterozoic

Auvergne Group

Wondoan Hill Formation (Pco) 145mthick

Unconformable overlies the Bullita Group. Consists of quartz sandstone and glauconitic sandstone, with minor claystone and siltstone.

Bullita Group

Battle Creek Formation (Pba) 80m thick

Conformably overlies the Weaner Sandstone.

Consists of greenish to purple siltstone with dark brown coarse-grained glauconitic dolomite. At the middle of the formation is a series of red brown stromatolitic dolomite and at the top is brown yellow sandstone.

Weaner Sandstone (Pbw) 3-15m thick

Conformably overlies the Bynoe Fm. It is a thin series of white to brown sandstone and grits that are pebbly towards the base.

Bynoe Formation (Pby) 190-243m thick.

The basal part contains green and purplish micaceous siltstones and shales with few sandstone and dolomite interbeds.

The rest of the Fm consists of thinly bedded sandstone and slightly micaceous siltstone.

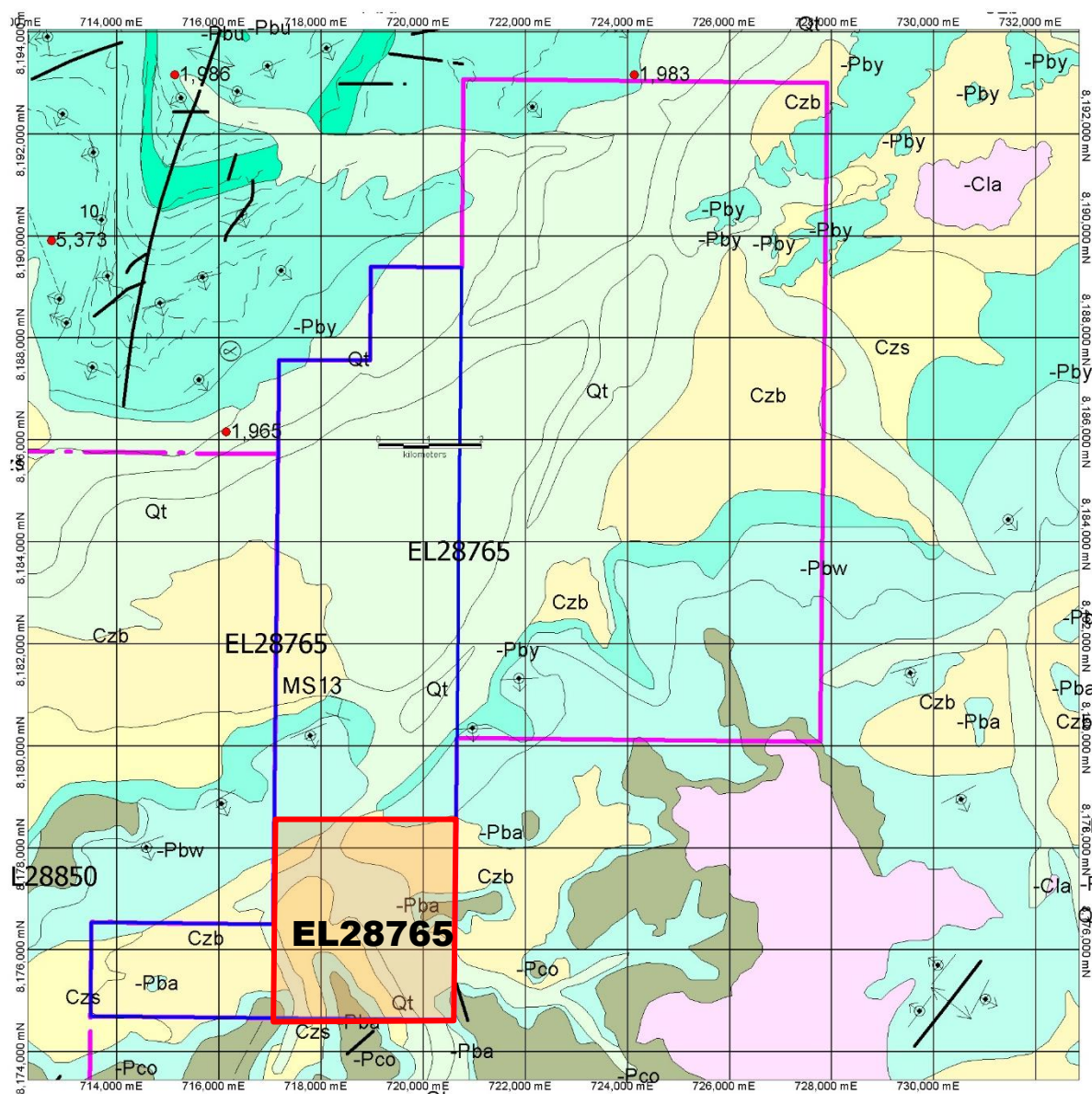


Figure 4 Geological Map of EL28765 (1:250000 geologic map)

4.2.2 Metamorphic

Muscovite quartz schist, acid volcanism. Basement in the Birrindudu Basin.

The project is targeting SEDEX-style zinc-lead deposits in the Victoria River Basin. The Basin has strong similarities to the Macarthur and Nicholson Basins which host the giant Macarthur River and Century SEDEX-style zinc deposits. The project, located 200 km east of Kununurra (WA) and 250 km southwest of Katherine (NT), covers a sequence of Proterozoic sediments dominated by dolomitic carbonates and other fine-grained sediments. The sediments are generally flat lying with an overall very shallow

south-easterly dip. The Mount Sanford Formation (Wattie Group) and the Timber Creek Formation (Bulita Group) are considered the most prospective for SEDEX style of mineralization targeted by former lease (Anglo Australian Resources NL), particularly adjacent to interpreted growth faults.

4.2.3 Structure

The EL isn't reveal faults; in the southeastern and southern of EL, there is a few hills, it was little synclinal structures with N-S and orientated axial planes.

5. PREVIOUS EXPLORATION

Little advanced exploration has been carried out in the Victoria River Basin. Most of the work has consisted of early stage exploration consisting of stream sediment sampling and rock chip sampling. Large areas of stream sediment anomalism have had limited follow up. BHP completed a Geotem survey but no on ground follow-up.

The most extensive base metal exploration was completed by Hooker Mining / Australasian Minerals during the period 1969 -1972. Exploration included very detailed stream sediment sampling, VLFEM and IP follow-up at the Colt Prospect and Area 2. Exploration reports detail the mapping and geochemical sampling of 18 prospects in the Victoria River Basin area, which were either domal, monoclonal or fault structures, though several were flat basinal sag structures.

The areal extent of outcropping mineralization is never greater than several square kms and is often related to faults and joints. The most common occurrence of base metals is in the coarse-grained dolomites, particularly just above or below the Supplejack dolomite Member of the Skull Creek Formation and in the thick dolomite of the Lower Marker within the Timber Creek Formation. Near the Depot Creek-Wickham River intersection, within the Lower Marker sequence are 10cm thick bands of 30-40% galena. At Charlies Prospect (Area 4-T146), widespread disseminated galena, sphalerite and pyrite occur just above the Supplejack Dolomite Member of the Skull Creek Formation. This mineralization is 1-2m thick, and can be traced laterally for 300m. Extensive disseminated pyrite, chalcopyrite and galena mineralization has been

found at Area 14 within the Battle Creek Formation.

A massive barite vein outcrops at Location C199, measuring 1.5m thick and 800m long. Manganese nodules and stains have been reported around Battle Creek within the Battle Creek Formation.

Four percussion holes were drilled targeting IP anomalies corresponding to geochemical anomalism at the Colt and Area 2 prospects totaling 500m. Localized disseminated galena was intersected. These holes were drilled more than 35 years ago. While no detailed collar locations are available the two prospects are interpreted to occur in the following locations. The Colt prospect is reasonably well defined by a sketch map and is located 2.7km NE of the VRD homestead near a fence in the vicinity of weakly altered dolomite and lead stream sediment anomalies (approx. 716,500E 8,187,700N).

Reports on the Area 2 prospect give no specific location. However, we can interpret that this prospect occurs in the vicinity of a very strong and extensive, north east trending lead in stream sediment anomaly located 11 – 17 km north east of the VRD homestead. Stream sediment and soil sampling in this area by Anglo Australian Resources confirmed the lead anomalism but did not find the drill collars.

The Northern Territory Geological Survey in 1999 completed two stratigraphic diamond drill holes located within the Victoria River Basin (99VRNTGSDD1 and 99VRNTGSDD2). The Hole 99VRNTGSDD1 is located 17km south- southwest of the Victoria River Downs homestead and about 22km lies EL28765 tenement southwest. The Hole 99VRNTGSDD2 is located 45km to the north-northwest of the Kidman Springs homestead, about 51km to the northeast of EL28765 tenements. The drilling intersected live oil and bitumen as well as epigenetic galena and pyrite within the Skull Creek Formation and the Timber Creek Formation. Assay values up to 1630ppm Pb were obtained. (Dunster and Cutovinos 2002)

Previous exploration in the area located large areas of anomalous Lead and Zinc stream sediment geochemistry. Values of up to 9000ppm Pb, 740ppm Zn and 500ppm Cu have been recorded. In 2007, former lease holder carried out reconnaissance program, stream sediment, rock chip and reconnaissance soil

sampling. Stream sediment sampling confirmed previous lead anomalism with assays up to 5700ppm Pb and 130ppm Zn associated with the Skull Creek Formation and the Bynoe Formation within the Bullita Group. Highly anomalous levels of lead (up to 3300ppm Pb) and zinc (up to 1100ppm Zn) were returned from rock chips of dolomitic sediments. Anomalous levels (up to 500ppm) of lead were also returned from wide-spaced reconnaissance soil traverses. The values and the extent of anomalism (up to 12 x 3km in dimension) are encouraging, as the deposit models guiding the exploration suggest lead anomalism may be the surface expression of an alteration halo of a base metal mineralized system at depth.

6. EXPLORATION DURING YEAR 1

During the first year, all available historical data was compiled into one database (displayed in Figure 5). During 20th to 26th August 2012, AMG staff entered the northern part of the lease along the station track to implement reconnaissance (photo 1).

7. EXPLORATION DURING YEAR 2

During the second year, AMG continues to dispose all historic data of the EL's. AMG pay attention on the Kurinelli goldfield in Davenport range of Barkly region. Because the lease is covered of thick topsoil, so AMG decided to surrender the eastern area of this tenement.

8. EXPLORATION DURING YEAR 3

During the third year, AMG continues to dispose all historic data of the EL's. AMG pay attention on the Kurinelli goldfield in Davenport range of Barkly region.

9.EXPLORATION DURING YEAR 4

During the fourth year, AMG continues to dispose all historic date of the EL's. AMG pay attention on the Kurinelli goldfield in Davenport range of Barkly region.

10. EXPLORATION DURING YEAR 5

During the fifth year, AMG continues to dispose all historic date of the EL's. AMG pay attention on the Kurinelli goldfield in Davenport range of Barkly region. In addition, as required by the headoffice in China, AMG hope to search for opportunities of cooperation investment from China or others.

11. EXPLORATION DURING YEAR 6

During the sixth year, AMG continues to dispose all historic date of the EL's. AMG pay attention on the on Kurinelli goldfield in Davenport range of Barkly region. In addition, AMG continues to search for opportunities of the cooperation investment from China or others.

12. EXPLORATION DURING YEAR 7

During the seventh year (22nd November 2017 to 21st November 2018).AMG continues to dispose all historic date of the EL's.But it is so difficult to find the interesting or useful information for us to decide to do more works on the lease.

And concerning the budget reduce of our company, AMG finally decided to surrender the EL28765.

13. EXPENDITURE

During all of seven years, period 22nd November 2011 to 21st November 2018, All expenditure on EL28765 is \$124,000 (as supplied by Australia Mining and Gemstone Co. Pty Ltd), consisted of:

Table 3 Expenditure on EL28765 During seven years

	Year 1	Year 2	Year3	Year4	Year 5	Year 6	Year 7
Office Studies	\$7,000	\$7,000	\$11,000	\$7,000	\$5,000	\$15,000	\$2,000
field reconnaissance	\$3,000						
Geological data processing		\$9,000	\$3,000	\$7,000	\$5,000	\$2,000	\$2,000
Geophysical data processing		\$6,000	\$3,000	\$6,000	\$5,000	\$2,000	\$2,000
Overheads	\$3,000	\$2,000	\$2,000	\$2,000	\$1,000	\$1,000	
Others	\$4,000						
Total	\$17,000	\$24,000	\$19,000	\$22,000	\$16,000	\$20,000	\$6,000

14. CONCLUSION AND RECOMMENDATIONS

The exploration target is on Pb–Zn–Ag deposits of sediment hosted stratiform, however throughout analysis historic exploration data and superficial survey in EL28765, there is absence of black siltstones and major regional basinal faults in this lease area. in other words, no metalliferous brines and hydrothermal source were activated. After 7 years study, the results were unsatisfactory, AMG finally decided to surrender the EL28765.

15. REFERENCES

1998 Lindsay J.F.

The Broadmere Structure a Window into Palaeo-Proterozoic Mineralization, Mc Arthur Basin, Northern Australia. Australian Geological Survey Organization, Record 1998-38.

1999 Holm O. et al

Basins, Fluids and Zn-Pb Ores; CODES Special Publications 2: By Centre for Ore Deposit Research University of Tasmania.

1999 Berryman AK et al

The Discovery and Geology of the Timber Creek Kimberlites, Northern Territory, Australia: in Gurney; Gurney J.L., Pascoe M.D. and Richardson S.H. (editors).
Proceedings of the 7th International Kimberlites Conference, Cape Town, vol, 30-39.
Red Roof Design, Cape Town.

2000 Beyer P.R. et al

Geology and Resource Potential of the Birrindudu-Victoria Basins: in annual
Geoscience Exploration Seminar (AGES), Record of Abstracts, NTGS Record
2000-0010.

2002 Beyer P.R. et al

Victoria River Downs, Northern Territory, SE52-4 NTGS 1:250,000 Geological Map
Series Explanatory Notes.

2002 Dunster J.N and Cutovinos A.

Drill Hole Completion Report, 99VRNTGSDD1 and 99VRNTGSDD2 Victoria River
Downs, Northern Territory, NTGS record 2002-006

2008 ANGLO AUSTRALIA RESOURCES NL.

2008 ANNUAL REPORT for EL25422&EL25423&EL25728 (Phil Mattinson AIG).

Copyright

This document and its content are the copyright of Australia Mining and Gemstone Co. Pty Ltd. The document has been written by Australia Mining and Gemstone Co. Pty Ltd for submission to the Department of PRIMARY INDUSTRY AND RESOURCES of Northern Territory as part of the tenement reporting requirements of the Minerals Titles Act 2010.

Any information included in the report that originates from historical reports or other sources is listed in the "References" section at the end of the document.

I authorize the Department to copy and distribute the report and associated data.