



# **Kingston Resources Limited**

ACN 009 148 529

**EL31535**

**Trackrider Project**

**Annual Technical Report**

**8/11/17 – 7/11/18**

Author: M Atkinson

Tenement Holder: Centex Resources Pty Ltd

Submitted Report By: Kingston Resources Ltd

Date of Report: 6/12/2018

Distribution To: Kingston Resources Ltd (1)

Northern Territory Geological Survey (1 )

## Keywords

|   |  |
|---|--|
| Titleholder   | Centex Resources Pty Ltd   |
| Operator  | Kingston Resources   |
| Titles/Tenements  | EL31535  |
| Tenement Manager/Agent  | Complete Tenement Management   |
| Project   | Trackrider   |
| Report title including type of report and reporting period including a date | EL31535- Trackrider Project,Annual Technical Report: 8/11/17 – 7/11/18 |
| Personal author(s)  | M Atkinson   |
| Corporate author(s)   | Kingston Resources Ltd   |
| Target Commodity or Commodities   | Pb, Zn   |
| Date of report  |  |
| Datum/Zone  | GDA94/Zone 53  |
| 250 000 K mapsheet  | Elkedra (SF5307)   |
| 100 000 K mapsheet  | Ooratippra (6154)  |

## Contents

|                                       |    |
|---------------------------------------|----|
| Keywords.....                         | ii |
| Summary .....                         | 4  |
| Location.....                         | 4  |
| Tenure .....                          | 4  |
| Geology .....                         | 5  |
| Local Geology .....                   | 5  |
| Previous Exploration Activities ..... | 6  |
| Exploration Undertaken.....           | 6  |
| AAPA search .....                     | 6  |
| Desktop Activities .....              | 6  |
| Conclusions and Recommendations ..... | 6  |
| Expenditure.....                      | 7  |
| References .....                      | 7  |

## Figures

|  |   |
|--|---|
| Figure 1: EL31534 Box Hole with NTGS 1:250 K Geological Mapping (MGA94_53) ..... | 5 |
|--|---|

## Tables

|  |   |
|--|---|
| Table 1: Tenement Summary EL31535 .....  | 4 |
| Table 2: EL31535 2018 Expenditure: ..... | 7 |

## Copyright Statement

*The owned information acquired by Kingston Resources Ltd includes all information under the previous work by Kingston Resources Ltd and work during reporting year sections. The rest of the information has been sourced from open reports and data through the Department of Primary Industry and Resources. The Minister has authority to publish the copyrighted information accordingly.*

## Summary

EL31535 is located approximately 250km east-northeast of Alice Springs in the Northern Territory, with access to the tenement via the sealed Sandover Highway and various station tracks.

This tenement lies entirely within the Arrinthrunga Formation of the Georgina Basin. This is a shale/carbonate sequence with some quartzitic sands that was deposited in an occasionally emergent, restricted shallow basin. Stromatolitic reefs are plentiful.

KSN undertook a thorough review of the previous exploration activities within EL31535, with the aim of understanding the geology and base metals prospectively of the project.

## Location

The tenement is located approximately 230km east-northeast of Alice Springs in the Northern Territory. Arapunya Station lies within the tenement boundary, with access to the tenement via the sealed Plenty Highway and various station tracks.

## Tenure

EL31535 is held by Centex Resources Pty Ltd, 100% - owned subsidiary of Kingston Resources Ltd, who are the operator. The tenement was granted in November 2018, this is first annual technical report for the tenement.

*Table 1: Tenement Summary EL31535*

| Tenement | Status | Holder                   | Land Status | Grant Date | Expiry   | Legal Area | Area SqKm |
|----------|--------|--------------------------|-------------|------------|----------|------------|-----------|
| EL31535  | Live   | Centex Resources Pty Ltd | Lease       | 8/11/17    | 7/11/222 | 34         | 108.1     |

## Geology

The Trackrider tenement is located within the Georgina Basin, which was the northern part of the Centralian Superbasin. Following the Peterman Orogeny, the area developed as a stable carbonate platform, with occasional clastic sedimentation. The subsequent Alice Springs Orogeny produced little metamorphism in the southern Georgina Basin, but is thought to be responsible for some mild heating and hydrothermal activity (Dunster et al. 2007).

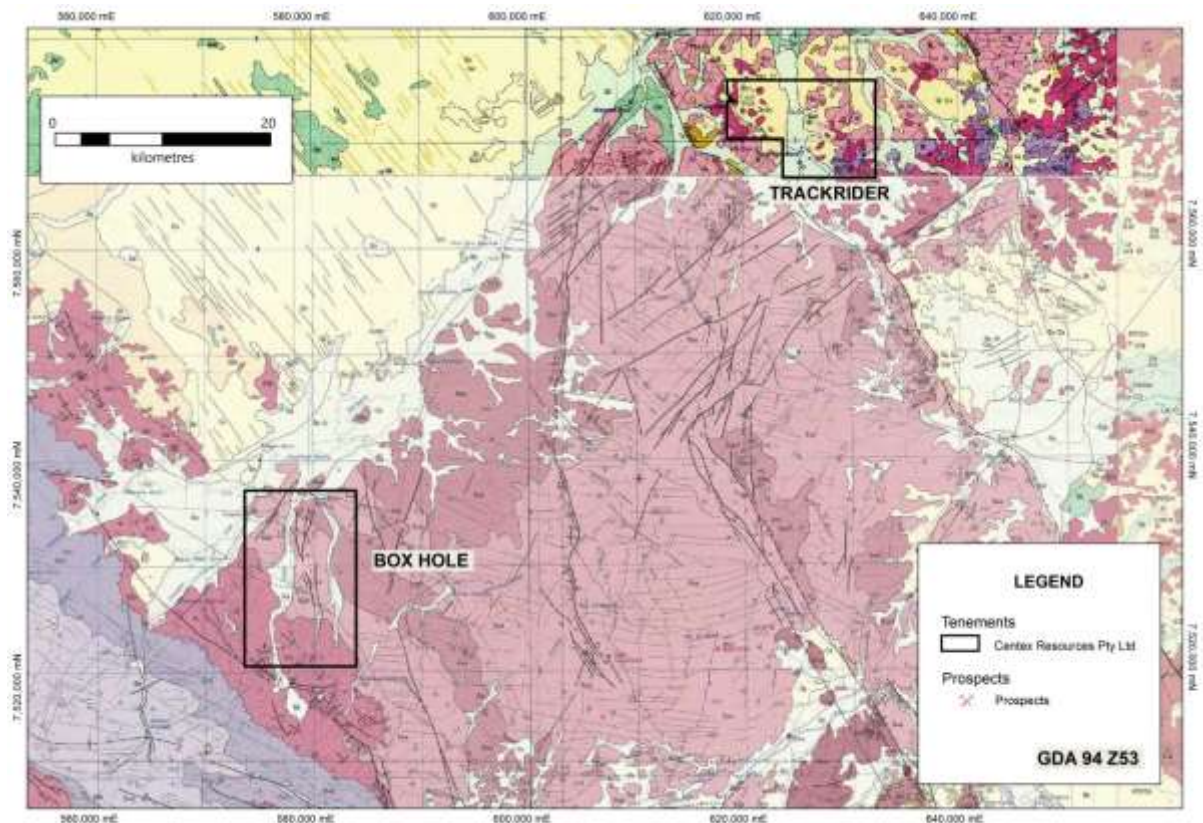


Figure 1: EL31534 Box Hole with NTGS 1:250 K Geological Mapping (MGA94\_53)

### Local Geology

Trackrider project sits within the south part of the Georgina Basin and is entirely underlain by Palaeozoic sediments (Figure 1). The cover sequence of this area is a simple sequence of gently folded, predominantly calcareous, sediments. These include:

the Lower Ordovician-Upper Cambrian Tomahawk Beds of calcareous sandstone; buff, green and white siltstone; brown dolomite, grey siliceous limestone, grey oolitic limestone, glauconitic sandstone and chert.

- The Upper Cambrian Arrinthrunga Formation, which is mainly brown and buff massive dolomite and limestone, plus thin interbeds of calcareous sandstone, blue oolitic algal limestone and shale.
- The Upper Cambrian Eurowie Sandstone Member consisting of brown quartz sandstone.
- Tertiary laterites and recent surface deposits are the youngest rocks in the area

## Previous Exploration Activities

Previous exploration is detailed in CKA Resources Pty Ltd, 2018 Final Report EL27526 (Chapman, A 2018)

## Exploration Undertaken

### AAPA search

A request for a summary of registered and recorded sacred sites was made for the EL31535 with the Aboriginal Areas Protection Authority (AAPA).

### Desktop Activities

All historic data was digitised and place in to Kingston Resources main databased

Kingston Resources identified the Georgina Basin as an under explored basin prospective for MVT or SEDEX Pb-Zn mineralisation. Whilst the mineralisation models for the Georgina Basin are predominantly conceptual in nature, it is the relative lack of systematic basin scale exploration which makes the region an exploration opportunity.

KSN undertook a thorough review of the previous exploration activities within EL31535 in order to gain an understanding the geology and base metals perspective of the project. During the process it was also noted that the region has documented Kimberlites and is prospective for Diamonds.

## Conclusions and Recommendations

With relatively little effective exploration undertaken to date EL31535 remains prospective for both MVT, SEDEX Pb-Zn mineralisation and has potential for diamond mineralisation with the recent discovery of Kimberlites.

## Expenditure

*Table 2: EL31535 2018 Expenditure:*

## References

Dunster JN et al, 2007. Geology and resource potential of the southern Georgina Basin. Northern Territory Geological Survey, Digital Information Package DIP007

Chapman A, 2018. CKA Resources Pty Ltd, 2018 Final Report EL27526