



Kingston Resources Limited

ACN 009 148 529

EL31534

Box Hole Project

Annual Technical Report

8/11/17 – 7/11/18

Author: M Atkinson

Tenement Holder: Centrex Resources Pty Ltd

Submitted Report By: Kingston Resources Ltd

Date of Report: 6/12/2018

Distribution To: Kingston Resources Ltd (1)

Northern Territory Geological Survey (1)

Keywords

Titleholder	Centex Resources Pty Ltd
Operator	Kingston Resources
Titles/Tenements	EL31534
Tenement Manager/Agent	Complete Tenement Management
Mine/Project Name	Box Hole
Report title including type of report and reporting period including a date	EL31534- Box Hole Project,Annual Technical Report: 8/11/17 – 7/11/18
Personal author(s)	M Atkinson
Corporate author(s)	Kingston Resources Ltd
Target Commodity or Commodities	Pb, Zn
Date of report	
Datum/Zone	GDA94/Zone 53
250 000 K mapsheet	Huckitta (SF5311)
100 000 K mapsheet	Arapunga (6053)

Contents

Keywords.....	ii
Summary	4
Location.....	4
Tenure	4
Geology	5
Regional Geology	5
Local Geology	5
Previous Exploration Activities	6
Exploration Undertaken.....	6
AAPA search	6
Desktop Activities	6
Conclusions and Recommendations	6
References	8

Figures

Figure 1: EL31534 Box Hole with NTGS 1:250 K Geological Mapping (MGA94_53)	5
Figure 2: CSA's review identifying target areas deemed underexplored at Box Hole, key surface sampling targets, (Mackay, M 2009).	7

Tables

Table 1: Tenement Summary EL31534	4
---	---

Copyright Statement

The owned information acquired by Kingston Resources Ltd includes all information under the previous work by Kingston Resources Ltd and work during reporting year sections. The rest of the information has been sourced from open reports and data through the Department of Primary Industry and Resources. The Minister has authority to publish the copyrighted information accordingly.

Summary

EL31534 is located approximately 230km east-northeast of Alice Springs in the Northern Territory. Arapunya Station lies within the tenement boundary, with access to the tenement via the sealed Plenty Highway and various station tracks.

This tenement lies entirely within the Arrinthrunga Formation of the Georgina Basin. This is a shale/carbonate sequence with some quartzitic sands that was deposited in an occasionally emergent, restricted shallow basin. Stromatolitic reefs are plentiful.

KSN undertook a thorough review of the previous exploration activities within EL31534, with the aim of understanding the geology and base metals prospectively of the project in order to generate drill ready targets.

Location

The tenement is located approximately 230km east-northeast of Alice Springs in the Northern Territory. Arapunya Station lies within the tenement boundary, with access to the tenement via the sealed Plenty Highway and various station tracks.

Physiography ranges from nodule-paved plains in the south and east to gentle carbonate hills in the northwest. There are two sizable seasonal creeks, and karst features are present in the carbonate areas. The vegetation ranges from savanna woodland near the creeks to annual grasslands to gidgee and acacia scrub. The vegetation is consistent with a continental desert.

Tenure

EL31534 is held by Centex Resources Pty Ltd, a 100%-owned subsidiary of Kingston Resources Ltd, who are the operator. The tenement was granted in November 2018, this is first annual technical report for the tenement.

Table 1: Tenement Summary EL31534

Tenement	Status	Holder	Land Status	Grant Date	Expiry	Legal Area	Area SqKm
EL31534	Live	Centex Resources Pty Ltd	Lease	8/11/17	7/11/222	54	174.54

Geology

Regional Geology

The Box Hole tenement is located within the southern Georgina Basin, which was the northern part of the Centralian Superbasin. Following the Peterman Orogeny, the area developed as a stable carbonate platform, with occasional clastic sedimentation. The subsequent Alice Springs Orogeny produced little metamorphism in the southern Georgina Basin, but is thought to be responsible for some mild heating and hydrothermal activity (Dunster et al. 2007).

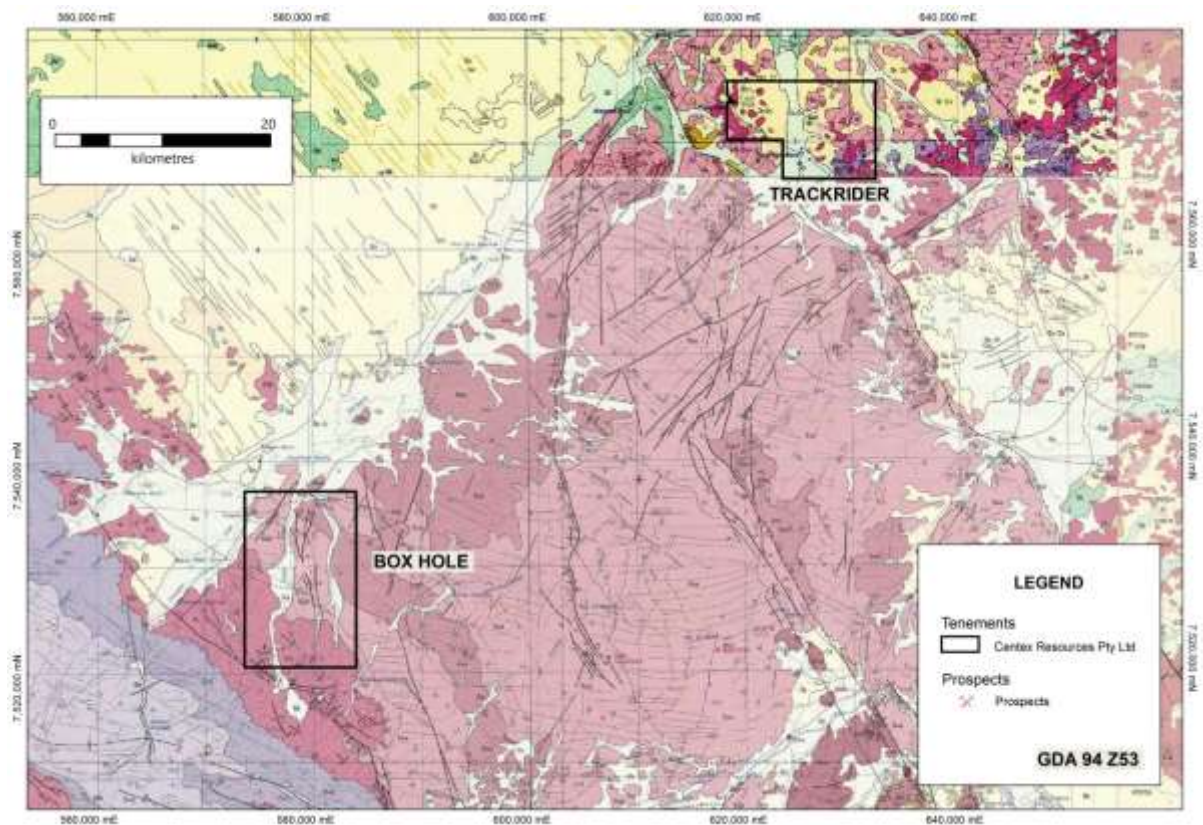


Figure 1: EL31534 Box Hole with NTGS 1:250 K Geological Mapping (MGA94_53)

Local Geology

This tenement lies entirely within the Arrinthrunga Formation of the Georgina Basin. This is a shale/carbonate sequence with some quartzitic sands that was deposited in an occasionally emergent, restricted shallow basin. Stromatolitic reefs are plentiful.

One of the Stromatolitic reefs in the upper Cambrian Arrinthrunga Formation hosts the King's workings deposit, which appears to be a MVT style barite-galena deposit formed during the Alice Springs Orogeny. The mineralized area is extensively silicified and contains pyrite gossans and occasional sphalerite in addition to the galena and barite.

Previous Exploration Activities

Previous exploration is detailed in CSA Global report, Exploration Potential of Box Hole Project (Mackay, M 2009) for Uramet Minerals Limited.

Exploration Undertaken

AAPA search

A request for a summary of registered and recorded sacred sites was made for EL31534 with the Aboriginal Areas Protection Authority (AAPA).

Desktop Activities

KSN undertook a thorough review of the previous exploration activities within EL31132 in order to gain an understanding of the geology and base metals prospectivity of the project, in order to generate drill ready targets.

All historic data was digitised and place in to Kingston Resources main databased.

Conclusions and Recommendations

Whilst the immediate outcropping mineralisation at Box Hole has been explored in detail, KSN note the recommendations by CSA Global.

CSA has recommended to step away from the outcropping mineralisation at Box Hole and undertake systematic soils and geophysics (3D IP), then follow up with stepped out RAB drilling. The northeast IP target has been identified as untested at 180m depth, and the Turkey Creek interpreted north-south structure is considered a potential fluid conduit, worthy of drill testing. (Figure 2).

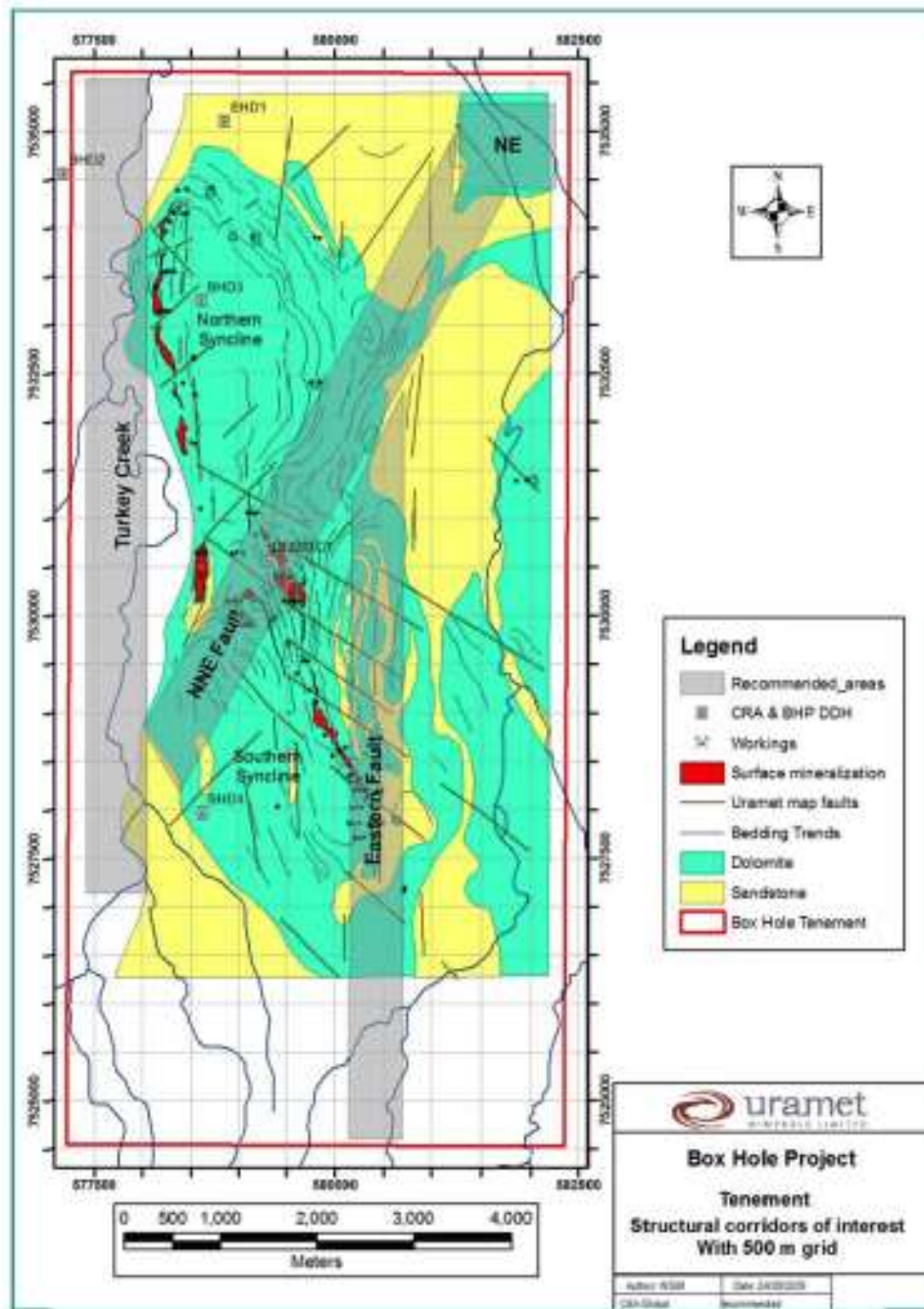


Figure 2: CSA's review identifying target areas deemed underexplored at Box Hole, key surface sampling targets, (Mackay, M 2009).

References

Dunster JN et al, 2007. Geology and resource potential of the southern Georgina Basin. Northern Territory Geological Survey, Digital Information Package DIP007

Mackay M, 2009. Exploration Potential of Box Hole Project (Mackay, M 2009) for Uramet Minerals Limited. CSA Global Report