

Technical Reporting

Tenure:	ML 29940
Group Report ID:	N/A
Title:	ML 29940 Annual Report
Report Period:	13/02/2017 to 12/02/2018
Project Name:	ML 29940 Project – YG7 West Creek
Title Holder:	Bevan James Griesbach (50%) and Dale N Page (50%)
Title Operator:	Bevan James Griesbach (Yogi)
Personal Author:	Ms Sally Horsnell
Report Type:	Annual Report
250K Mapsheet/s:	Pine Creek (SD 5208)
100K Mapsheet/s:	Pine Creek (Map Number 5270)
Geological Province:	Pine Creek Orogen
Stratigraphic Name:	South Alligator Group, Finnis River Group
Target Commodity:	Gold
Other Commodities:	N/A
Purpose for which Titles are held:	Alluvial gold mining

Title history:

ML29940 was granted to Bevan James Griesbach (50%) and Dale N Page (50%) on the 13th February 2014 for a period of 10 years. ML29940 is located approximately 165km south of Darwin.

Bevan James Griesbach (Yogi) was the nominated Operator for ML29940 during this reporting period for the small scale open cut alluvial operation approved under Authorisation 0917-01.

Location, physiography and access:

ML29940 is located on Perpetual Pastoral Lease 1217, Douglas Station and covers an area of 84 hectares. The Title is located 49km south of Adelaide River along the Stuart Highway. Access is gained left at the Fountain Head Road turnoff, travel approximately 20km, and then right onto Grove Hill Road for approximately 4.5km. Road access is usually all season however temporary road closures may along the Fountain Head during heavy rainfall events within the catchment.

Major land uses in the region are described as mining, pastoralism, intensive rural, freehold blocks, horticulture and conservation. The major population centres are Batchelor, Adelaide River and Pine Creek.

ML29940 is situated within the Pine Creek Bioregion of the Northern Territory which has a tropical monsoonal climate. Around 90% of annual rainfall occurs during the wet season between November and March, with a spatially averaged median rainfall of 1214mm. Pan evaporation exceeds rainfall with an average of 2400mm per year mostly occurring from July-November. The annual average minimum and maximum temperature is 21.5-33.4 °C.

The topography of ML29940 is described as generally hilly to rugged ridges with undulating plains. Topography ranges between 125-225 metres above mean sea level (MAMSL). A full land system description is detailed in the table hereunder.

ITEM	Land System Type	
Map unit	Bkr	Rwg
Landscape Class	sandstone hills	sandstone plains and rises
Class Description	low hills, hills and stony plateaux on sandstone, siltstone, quartzite and conglomerate (deeply weathered in places); outcrop with shallow stony soils	plains, rises and plateaux on mostly on sandstone, siltstone, claystone, shale and some limestone; commonly shallow soils with surface stone and rock outcrop
Landform	Rugged hills and strike ridges with intervening narrow valleys and short lower slopes on folded Burrells Creek greywacke, sandstone and siltstone	Low rounded hills and low gravelly ridges with intervening alluvial flats
Soil origin	Skeletal soils and outcrop with minor sandy red and yellow gradational soils.	Lithosols on rises, yellow podzolics on alluvial areas.
Soil association	Leptic Rudosols, shallow Yellow and Brown Kandosols	Leptic Rudosols on rises, Chromosolic Redoxic Hydrosols on alluvial areas
vegetation	Mid-high woodland of <i>C. dichromophloia</i> , <i>E. miniata</i> , <i>C. bleeseri</i> , <i>E. tectifera</i> and <i>C. terminalis</i> over <i>Sorghum spp</i> , <i>Themeda triandra</i> and <i>Chrysopogon spp</i>	Mid-high open woodland of <i>E. polysciadia</i> , <i>C. ferruginea</i> , <i>C. foelscheana</i> , <i>E. tectifera</i> , <i>Xanthostemon paradoxus</i> over <i>Chrysopogon spp</i> , <i>Sorghum spp</i> , <i>Eriachne trisetia</i>
Occurrence of acid sulphate Soils	No occurrence of acid sulphate soils	No occurrence of acid sulphate soils

Source: <http://www.ntlis.nt.gov.au>

ML29940 is situated within the Adelaide River catchment. Site hydrological conditions consist of numerous ephemeral drains and creeks discharging to the northwest to Yam Creek and the Margaret River.

Geology Setting:

ML29940 is situated in the Pine Creek Orogen geological province. The lithology class is sedimentary formed during the Proterozoic eon and Palaeoproterozoic era which covers 900 million years of earth's history. The project lies within the South Alligator Group representative stratigraphic unit and the lithology description is greywacke, shale, siltstone, dolostone, tuff, granite, felsic volcanic rocks, dolerite, basalt, micaceous schist, metapelite, calc-silicate rock, quartzite.

The region has been actively explored for a wide range of commodities including gold, uranium, base metals, PGE, iron ore, manganese, magnesite and phosphate.

Exploration/Mining History:

Historical mining activities have occurred throughout the region including the project site since the late 1800's and early 1900's, when Chinese miners worked the area for eluvial and alluvial gold. Mining continued spasmodically until the 1980's when Territory Resources mined eluvial and alluvial ore, which was transported to nearby Sandy Creek for processing. The Red Hill Project Site has a history of having hosted processing of gold-bearing material on site.

Dale Page alluvial processing commenced in December 2008 and March 2009. The dam wall was raised to allow for greater water storage capacity for processing, and a spillway installed at each end of the dam. Production commenced in 2009 and ceased in 2016. Dale Page is currently in the process of closure.

Exploration Rationale:

Considering the location of the area is close to a host of alluvial gold deposits, I believe that there is a potential for the area to host an economic gold resource.

Work Completed:

No mining activity occurred on ML29940 for the 2016-17 period under Authorisation 0917-01.

YG 7 West Creek has been mined in 2015-16 and rehabilitated with results of 0.45 grams per cubic metre of alluvial gold. Noted some erosion in the main creek bed. This will be rectified while mining in 2018, subject to approval.

Results:

Gold extraction from ML29940 was zero.

Conclusions/Recommendations:

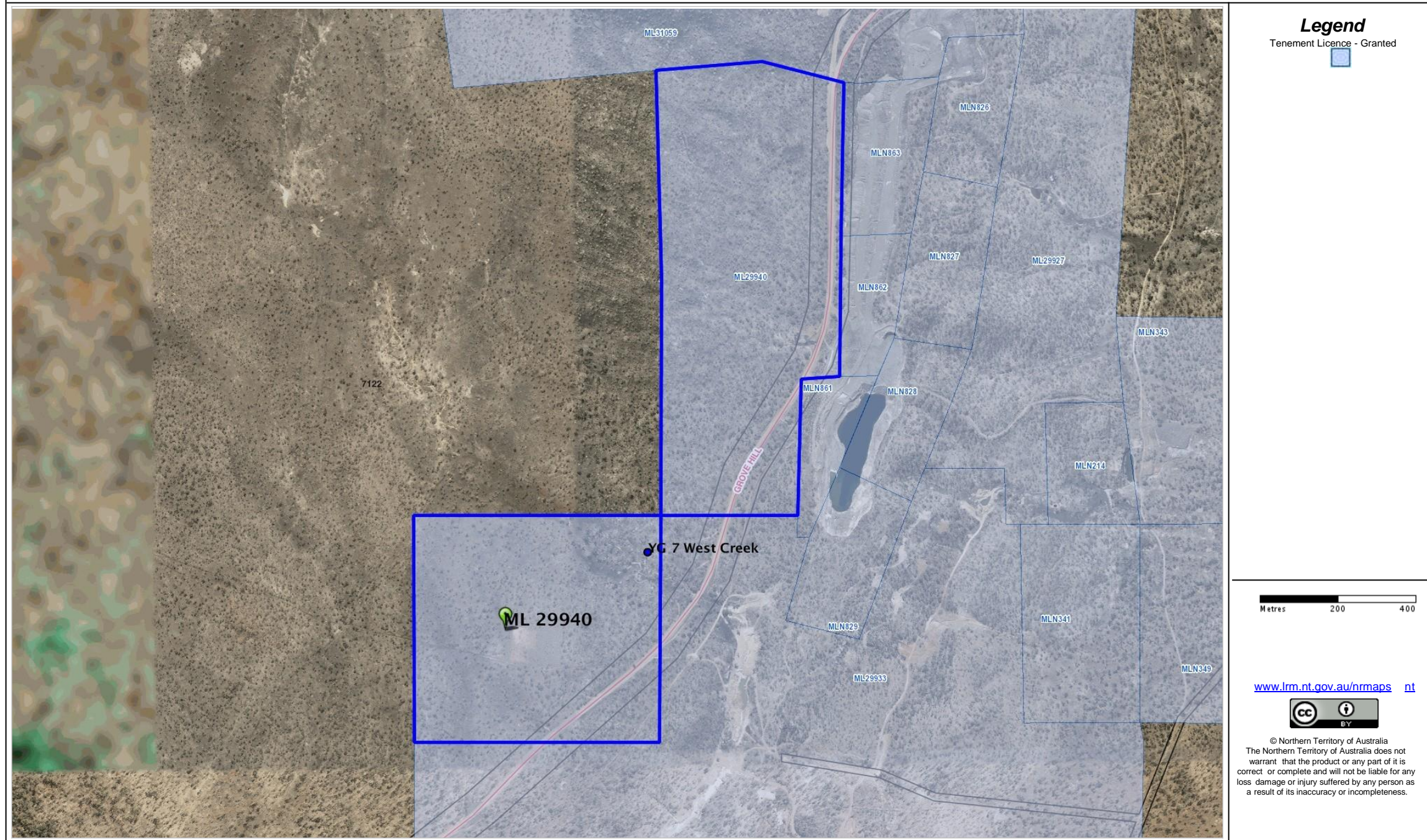
There are mining activities proposed for 2018.

Copyright Statement:

This document and its content are the copyright of B.J. Griesbach. The document has been written for submission to the Northern Territory Department of Primary Industry and Resources as part of the tenement reporting requirements as per the Mineral Titles Act (NT). I authorise the Northern Territory Department of Primary Industry and Resources to store, copy and distribute the report and associated data.

NR MAPS

ML29940 2017 Mined/Rehabilitated Areas



Created by anonymous, 09 Apr 2018

Figure 1. M 29940 2017 mined and rehabilitated areas