

Technical Reporting

Tenure: ML 29933

Group Report ID: N/A

Title: ML 29933 Annual Report

Report Period: 13/02/2017 to 12/02/2018

Project Name: ML 29933 Project – YG20, YG9 Lower Bob’s Creek

Title Holder: Yogi Griesbach (10%), Dale N Page (10%), OZ Uranium (80%)

Title Operator: Bevan James Griesbach (Yogi)

Personal Author: Ms Sally Horsnell

Report Type: Annual Report

250K Mapsheet/s: Pine Creek (SD5208)

100K Mapsheet/s: Pine Creek (Map Number 5270)

Geological Province: Pine Creek Orogen

Stratigraphic Name: South Alligator Group

Target Commodity: Gold

Other Commodities: N/A

Purpose for which Titles are held: Alluvial gold mining

Title history:

ML29933 covers an area of 354 hectares and was granted to Yogi Griesbach (10%), Dale N Page (10%), OZ Uranium (80%) on the 13/02/14 for a period of 10 years and expires on the 12/02/2024. ML29933 is located approximately 165km south of Darwin.

Bevan James Griesbach (Yogi) was the nominated Operator for ML29933 during this reporting period for the small scale open cut alluvial operation approved under Authorisation 0917-01.

Location, physiography and access:

ML29933 is located on Perpetual Pastoral Lease 1217, Douglas Station. The Title is located 49km south of Adelaide River along the Stuart Highway. Access is gained left at the Fountain Head Road turnoff, travel approximately 20km, and then right onto Grove Hill Road for approximately 4.5km. Road access is usually all season however temporary road closures may along the Fountain Head during heavy rainfall events within the catchment.

Major land uses in the region are described as mining, pastoralism, intensive rural, freehold blocks, horticulture and conservation. The major population centres are Batchelor, Adelaide River and Pine Creek.

ML29933 is situated within the Pine Creek Bioregion of the Northern Territory which has a tropical monsoonal climate. Around 90% of annual rainfall occurs during the wet season between November and March, with a spatially averaged median rainfall of 1214mm. Pan evaporation exceeds rainfall with an average of 2400mm per year mostly occurring from July-November. The annual average minimum and maximum temperature is 21.5-33.4 °C.

The topography of ML29933 is described as generally hilly to rugged ridges with undulating plains. Topography ranges between 125-225 metres above mean sea level (MAMSL). A full land system description is detailed in the table hereunder.

ITEM	Land System Type	
	Bkr	Rwg
Map unit		
Landscape Class	sandstone hills	sandstone plains and rises
Class Description	low hills, hills and stony plateaux on sandstone, siltstone, quartzite and conglomerate (deeply weathered in places); outcrop with shallow stony soils	plains, rises and plateaux on mostly on sandstone, siltstone, claystone, shale and some limestone; commonly shallow soils with surface stone and rock outcrop
Landform	Rugged hills and strike ridges with intervening narrow valleys and short lower slopes on folded Burrels Creek greywacke, sandstone and siltstone	Low rounded hills and low gravelly ridges with intervening alluvial flats
Soil origin	Skeletal soils and outcrop with minor sandy red and yellow gradational soils.	Lithosols on rises, yellow podzolics on alluvial areas.
Soil association	Leptic Rudosols, shallow Yellow and Brown Kandosols	Leptic Rudosols on rises, Chromosolic Redoxic Hydrosols on alluvial areas
vegetation	Mid-high woodland of <i>C. dichromophloia</i> , <i>E. miniata</i> , <i>C. bleeseri</i> , <i>E. tectifera</i> and <i>C. terminalis</i> over <i>Sorghum spp</i> , <i>Themeda triandra</i> and <i>Chrysopogon spp</i>	Mid-high open woodland of <i>E. polysciadia</i> , <i>C. ferruginea</i> , <i>C. foelscheana</i> , <i>E. tectifera</i> , <i>Xanthostemon paradoxus</i> over <i>Chrysopogon spp</i> , <i>Sorghum spp</i> , <i>Eriachne trisetia</i>
Occurrence of acid sulphate Soils	No occurrence of acid sulphate soils	No occurrence of acid sulphate soils

Source: <http://www.ntlis.nt.gov.au>

ML29933 is situated within the Adelaide River catchment. Site hydrological conditions consist of numerous ephemeral drains and creeks discharging to the northeast to Yam Creek and northwest to the Margaret River.

Geology Setting:

ML29933 is situated in the Pine Creek Orogen geological province. The lithology class is sedimentary formed during the Proterozoic eon and Palaeoproterozoic era which covers 900 million years of earths history. The project lies within the South Alligator Group representative stratigraphic unit and the

lithology description is greywacke, shale, siltstone, dolostone, tuff, granite, felsic volcanic rocks, dolerite, basalt, micaceous schist, metapelite, calc-silicate rock, quartzite.

The region has been actively explored for a wide range of commodities including gold, uranium, base metals, PGE, iron ore, manganese, magnesite and phosphate.

Exploration/Mining History:

Historical mining activities have occurred throughout the region including the project site since the late 1800's and early 1900's, when Chinese miners worked the area for eluvial and alluvial gold. Mining continued spasmodically until the 1980's when Territory Resources mined eluvial and alluvial ore, which was transported to nearby Sandy Creek for processing. The Red Hill Project Site has a history of having hosted processing of gold-bearing material on site.

Dale Page alluvial processing commenced in December 2008 and March 2009. The dam wall was raised to allow for greater water storage capacity for processing, and a spillway installed at each end of the dam. Production commenced in 2009 and ceased in 2016. Dale Page is currently in the process of closure.

Exploration Rationale:

Considering the location of the area is close to a host of alluvial gold deposits, I believe that there is a potential for the area to host an economic gold resource.

Work Completed:

A summary of Bevan James Griesbach 2016-17 mining activity on ML29933, approved under Authorisation 0917-01 involved sites YG20, YG9 Lower Bobs Creek, YG8 Red Hill West and YG8 Red Hill East.

YG 20 site area was approved for 0.25 ha clearance with an average depth of 2-3 metres. The area cleared of vegetation and overburden was excavated and stockpiled alongside the pit to enable easy backfilling. Work stopped at 3 metres due to zero gold results. Oversized rocks and overburden was backfilled into the pit and rehabilitated due to zero gold results.

YG9 Lower Bobs Creek been previously approved for 0.25 ha clearance with an average depth of 2-3 metres. No mining activity occurred on ML29940 for the 2016-17 period under Authorisation 0917-01. First year of rehab shows vegetation regrowth on disturbed areas.

YG8 Red Hill West was approved for 0.05ha clearance with an average depth of 2-3 metres. The overburden was excavated and stockpiled alongside the pit to enable easy backfilling. The gold bearing ore was trucked to the small alluvial process plant located on ML29933. Mining stopped at 3 metres due to poor gold recovery and had unearthed steel rubbish. The oversized rocks and overburden was backfilled into the pit and rehabilitated.

YG8 Red Hill East had been previously approved for 0.05 ha clearance with an average depth of 2-3 metres. Mining stopped due to early rain.

Results:

Gold extraction from ML29933 was zero.

Conclusions/Recommendations:

YG 20 was backfilled and rehabilitated with no future mining proposed at this location. Future mining at other locations on ML29933 is proposed in 2018.

YG 9 Lower Bobs Creek show good signs of rehabilitation after first year post mining. No future mining proposed at this location.

YG 8 Red Hill West was backfilled and rehabilitated with no future mining proposed at this location. During mining steel rubbish was unearthed indicating that this area had been previously mined.

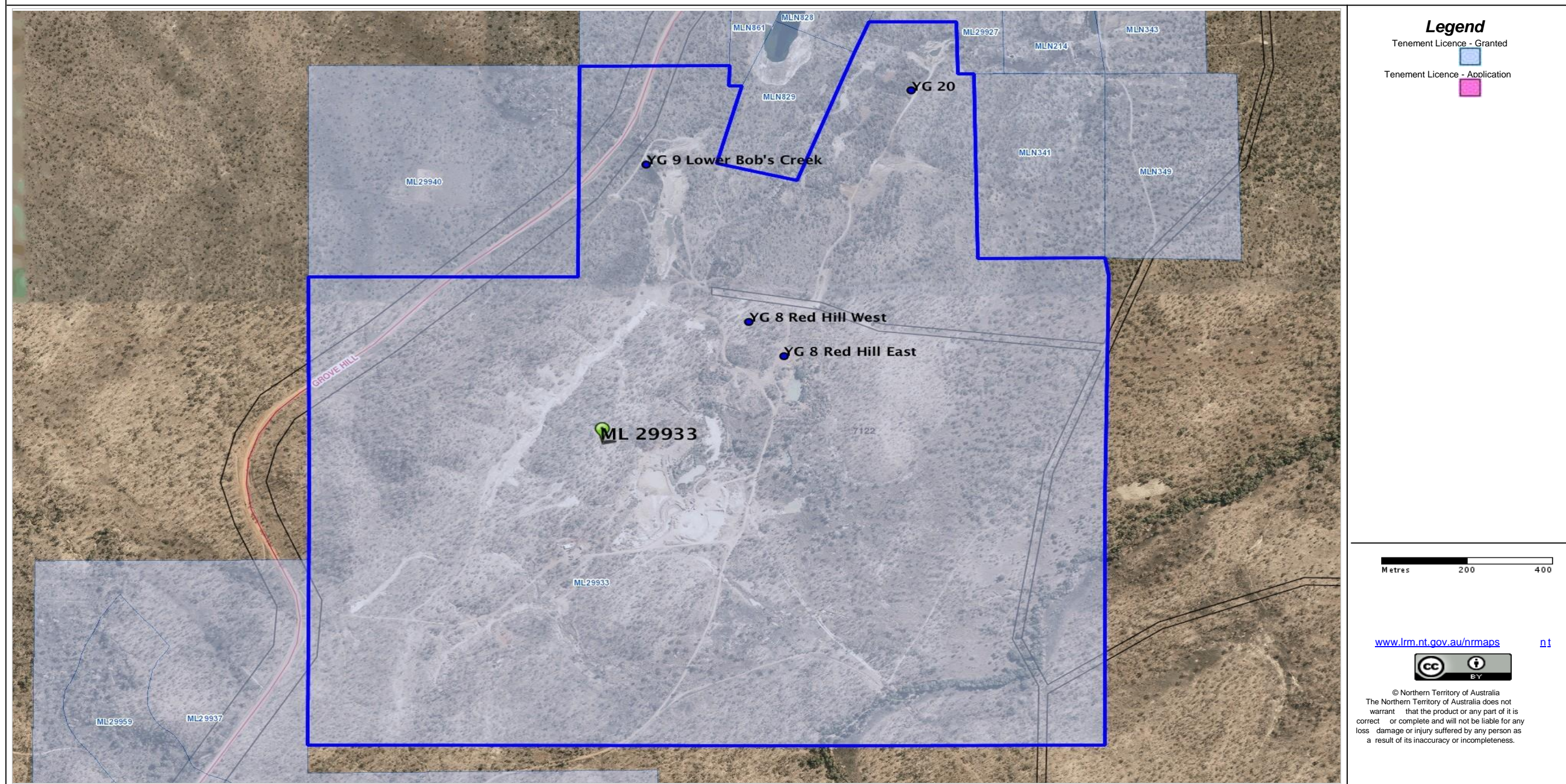
YG8 Red Hill East commenced mining but halted due to early season rainfall. Application for additional areas in 2018 mine plan will be sought.

Copyright Statement:

This document and its content are the copyright of B.J. Griesbach. The document has been written for submission to the Northern Territory Department of Primary Industry and Resources as part of the tenement reporting requirements as per the Mineral Titles Act (NT). I authorise the Northern Territory Department of Primary Industry and Resources to store, copy and distribute the report and associated data.

NR MAPS

ML29933 2017 Mined/Rehabilitated Areas



Created by anonymous, 09 Apr 2018

Figure 1 ML29933 2017 Mined and rehabilitated areas