

Sweetpea Petroleum Pty Ltd

Well: Maverick T463 A1

HALLIBURTON

Sperry Drilling

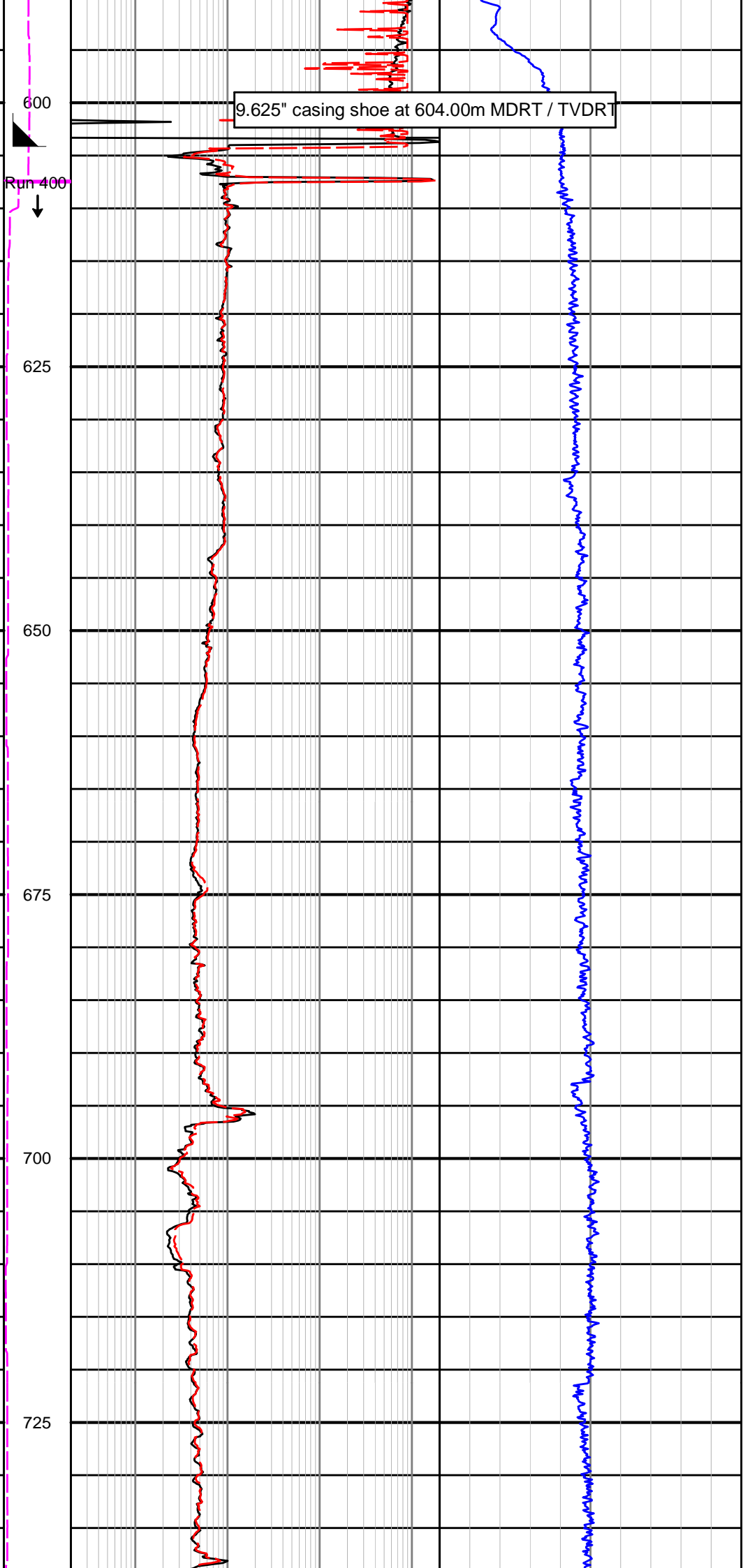
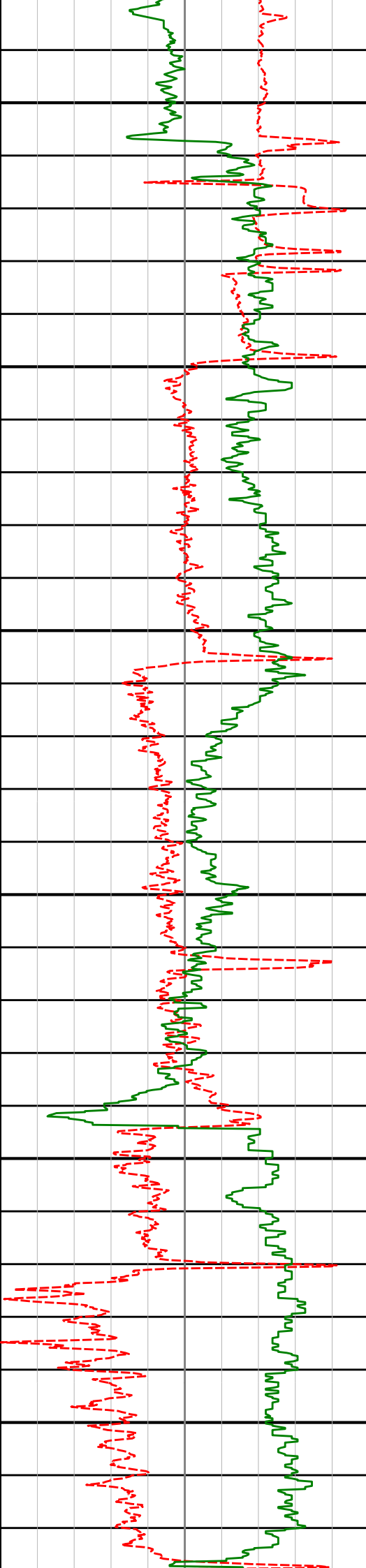
Real-Time LWD Data - Field Copy

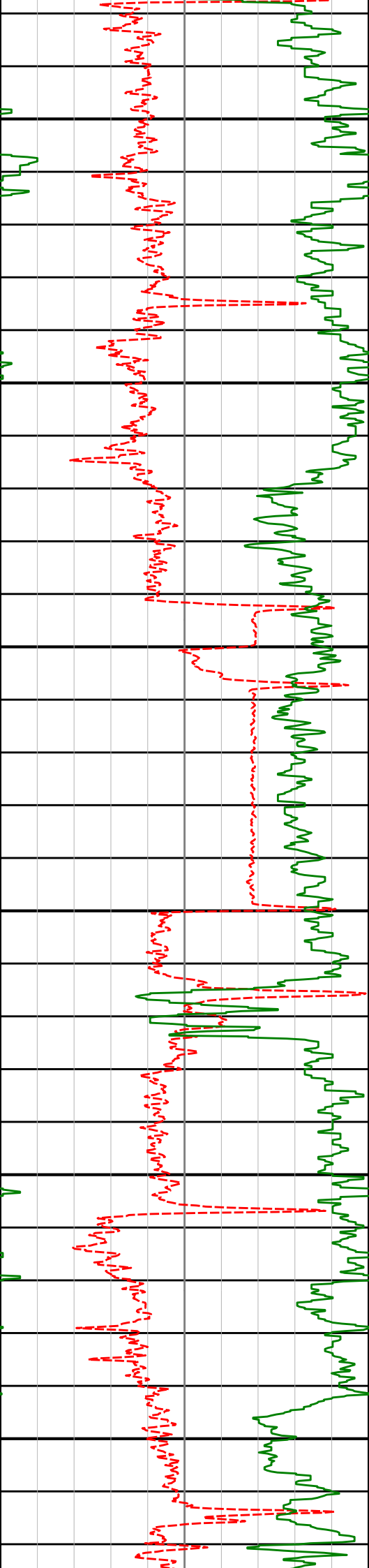
Scale 1:500MD

Plot Range: 590 m to 3060 m

- All depths are bit depths and referenced to driller's pipe tally, from the rotary table.
- Rotary table height is 280.16m above permanent datum, Mean Sea Level (MSL).
- No depth corrections have been made for pipe stretch or compression.
- Depth is measured by the rig and transferred via WITS.
- Gap fill for data is set at 2.00m. The following parameters have been applied to the data:
Rate of Penetration: 0.10m step, 0.30m coercion distance
All other curves: 0.10m step, 0.15m coercion distance
- Gamma Ray data has been corrected for hole size, mud weight and KCl concentration.
- Resistivity data has been corrected for hole size and mud resistivity.
- Resistivity data was obtained by an Electromagnetic Wave Resistivity tool (EWR-P4) from 560.00m to 2047.00m MDRT / 559.96m to 2046.30m TVDRT and Azimuthal Focused Resistivity tool (AFR) from 2047.00m MDRT / 2046.30m TVDRT. EWR-P4 equivalent mnemonics are used to present resistivity data on this log.
- Environmental parameters used to process LWD data are as follows:
Hole Size: Fixed 8.75" Tool Size: 6.75"
Mud Type: Water Based Mud
Mud Weight: 9.70 - 10.90 ppg
KCl: 0 % by wt
Mud Resistivity: 0.040 ohm @ 106.0 degC
- Curve Mnemonics used:
ROPA : Average Rate of Penetration, m/hr
PGRC-T : Smoothed PCG GR XHi-Range RT Bcor, api
EWXT-T : Smoothed Resistivity Formation Exposure Time, hrs
R39PC-T : Smoothed EWR 39in 1Mhz Phase Resistivity BCorr, ohmm
R15PC-T : Smoothed EWR 15in 2MHz Phase Resistivity BCorr, ohmm
PWEA-T : Smoothed PWD Annular EMW, ppg
- Data from 588.60m to 604.00m MDRT / TVDRT was logged behind 9.625" casing.
- Gaps in data at 1617.00m MDRT / 1616.69 TVDRT and 1868.80m MDRT / 1868.37m TVDRT are due to EWR tool service interrupt.
- Gaps in data at 1747.00m MDRT / 1746.65 TVDRT and 1872.60m MDRT / 1872.16m TVDRT are due to PCG tool service interrupt.
- Gaps in log are due to lost connection with Pason depth tracking.

<div> <div>Avg Rate of Penetration</div> <div>(ROPA)</div> <div>metre per hr</div> </div>	<div>EWXT-T</div> <div>hours</div>	<div>39in Phase Resistivity BC RT</div> <div>(R39PC-T)</div> <div>ohm-metre</div>	
<div> <div>PCG GR XHi-Range RT BCor</div> <div>(PGRC-T)</div> <div>api</div> </div>	<div>Depth</div> <div>MD</div> <div>1 : 500</div>	<div>15in Phase Resistivity BC RT</div> <div>(R15PC-T)</div> <div>ohm-metre</div>	<div>PWD Annular EMW</div> <div>(PWEA-T)</div> <div>lbs per gal</div>





750

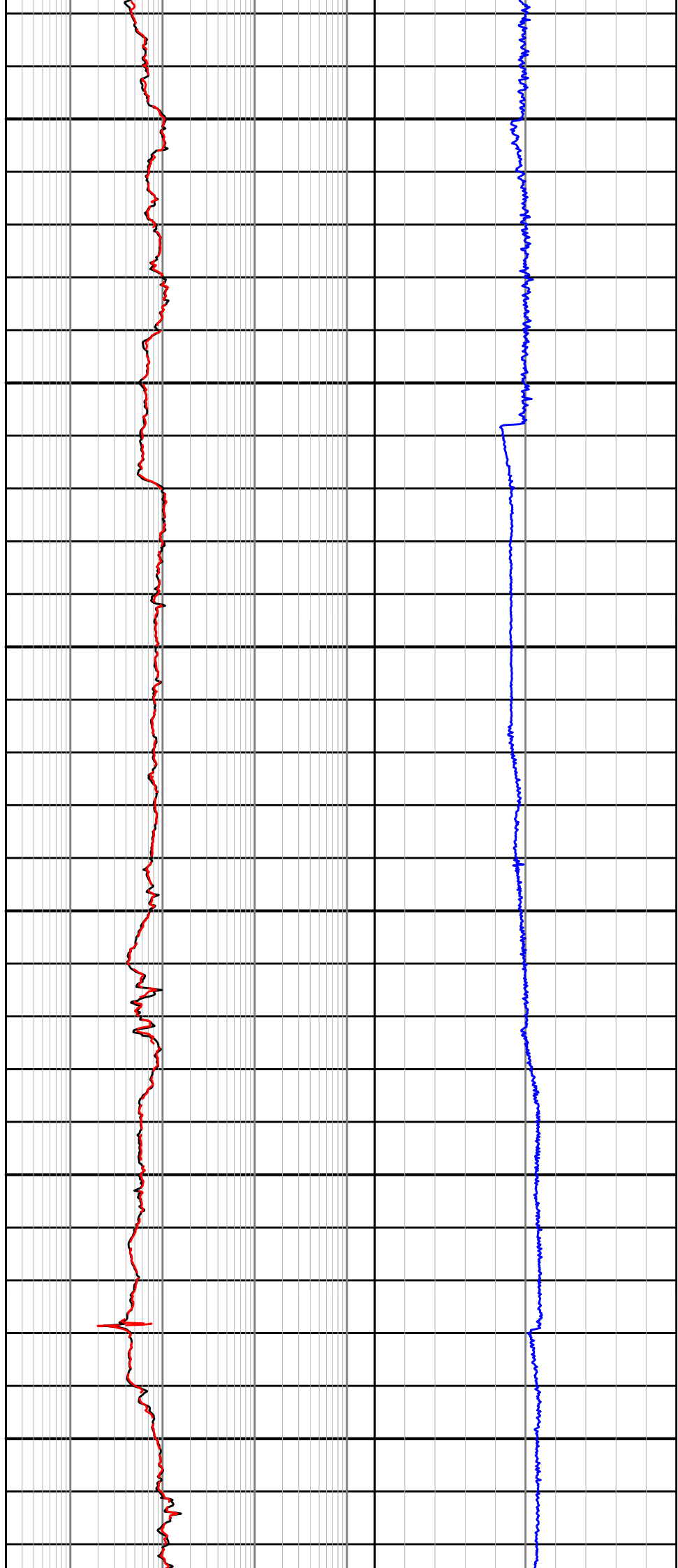
775

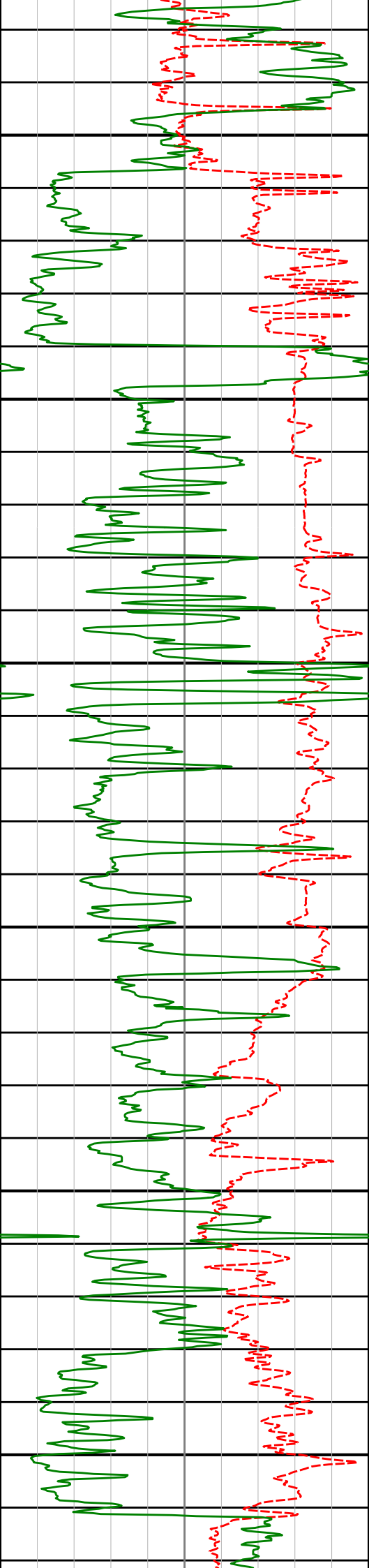
800

825

850

875





900

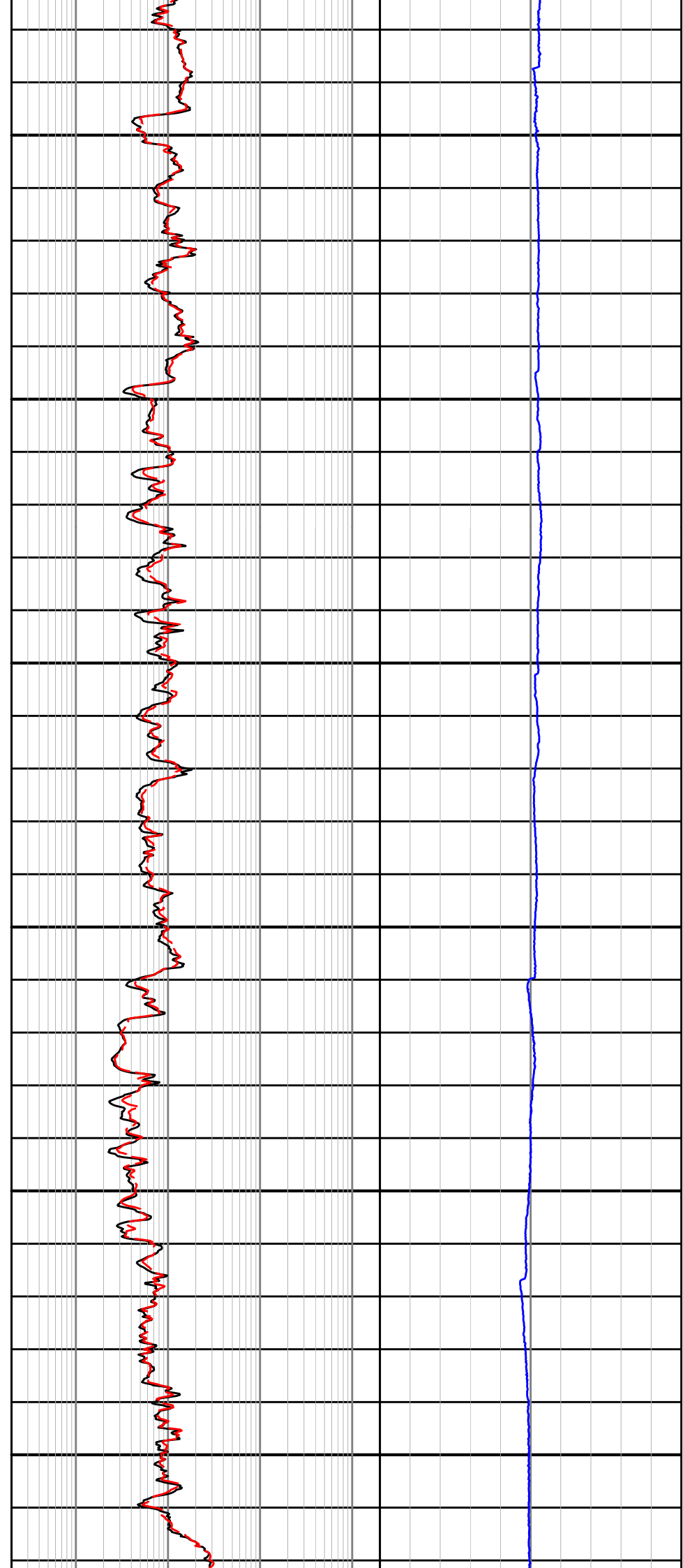
925

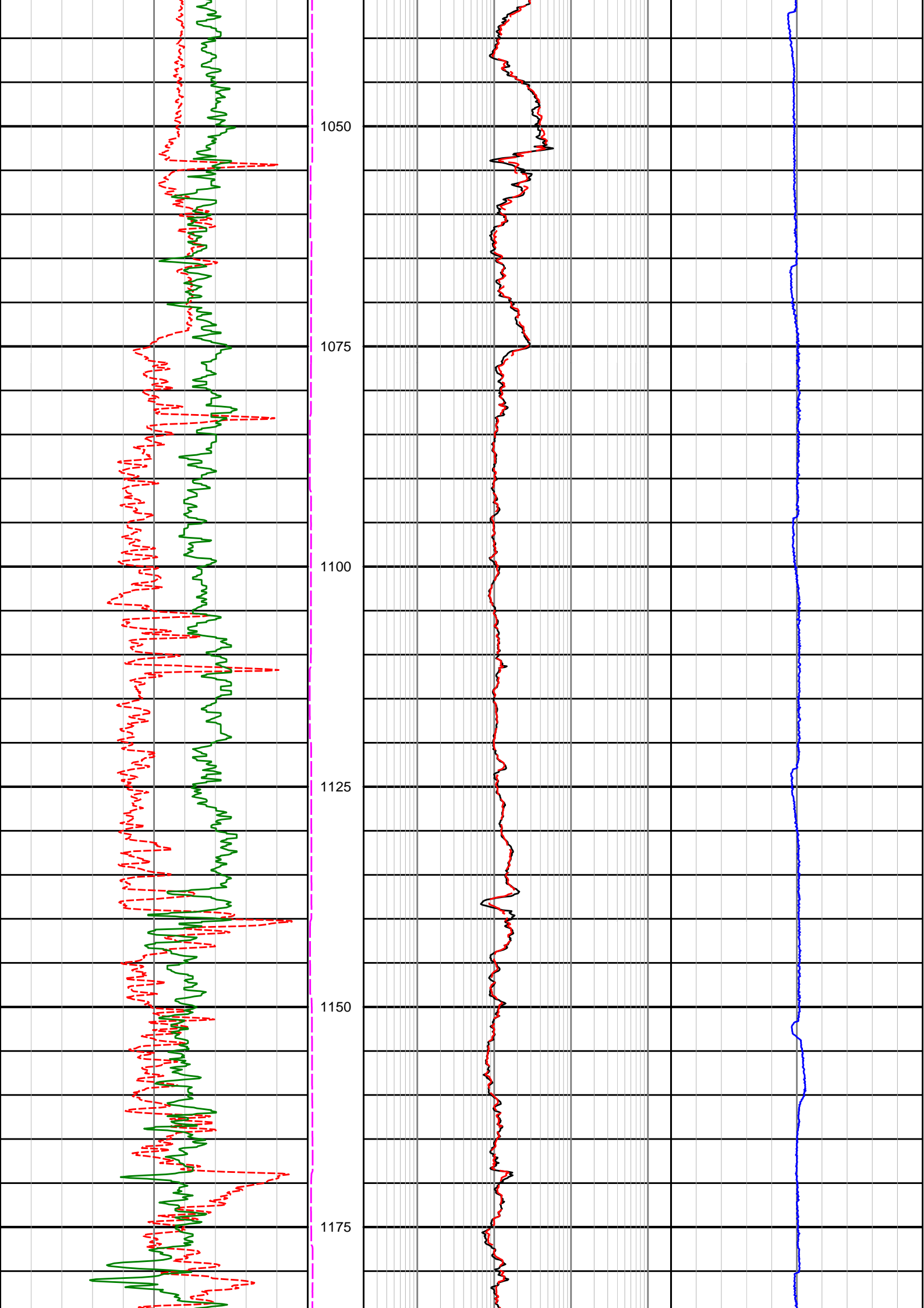
950

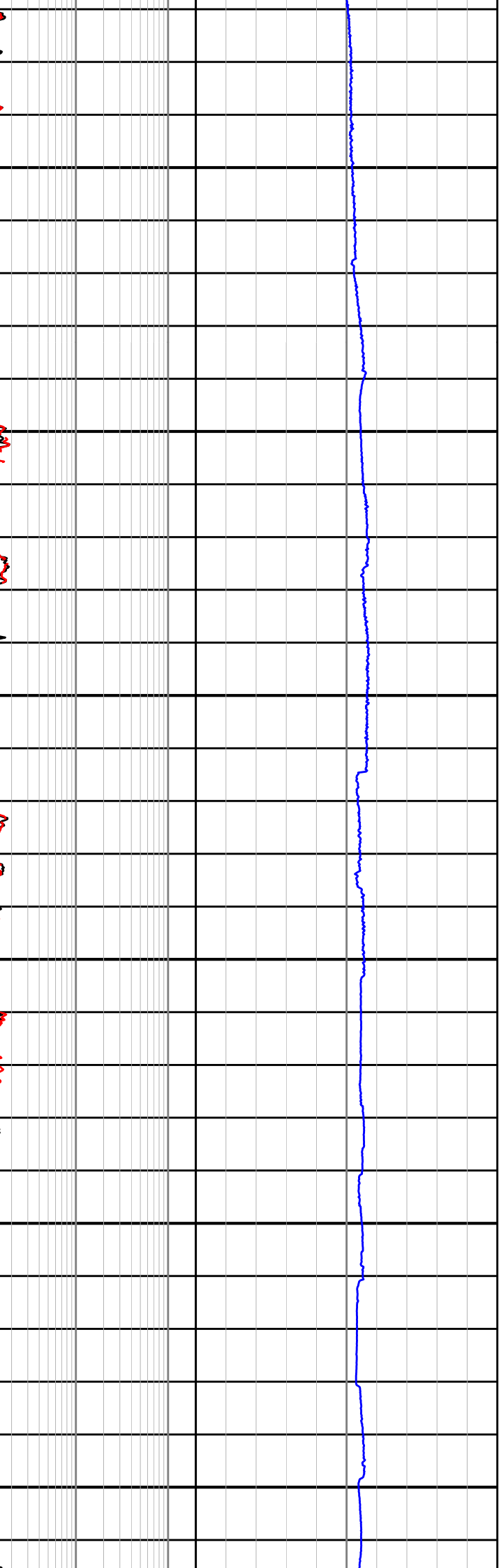
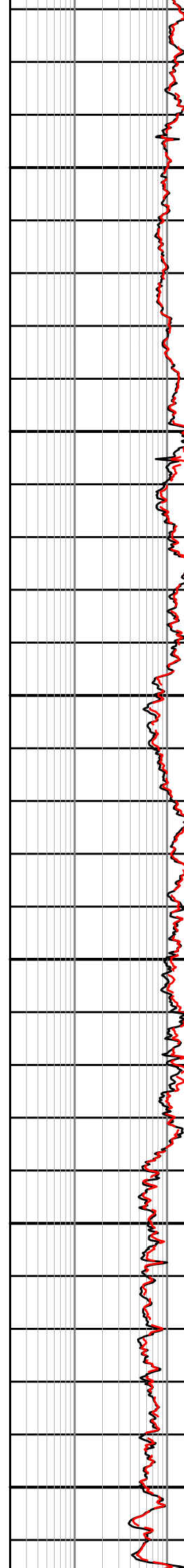
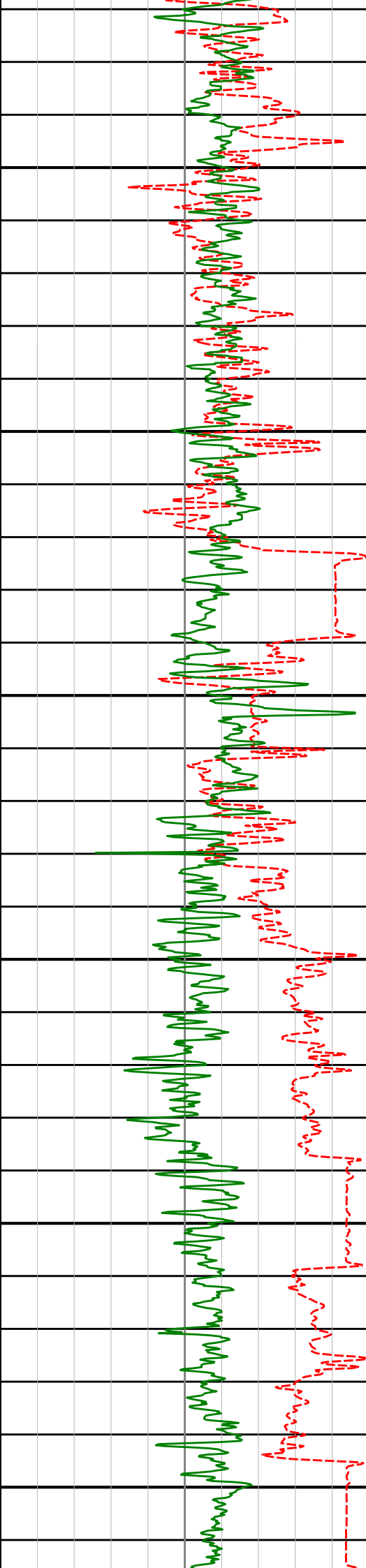
975

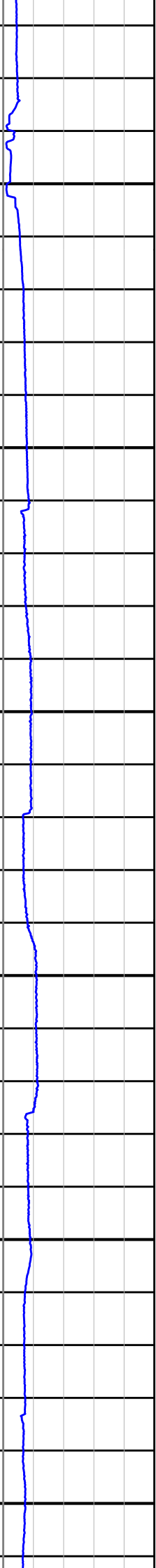
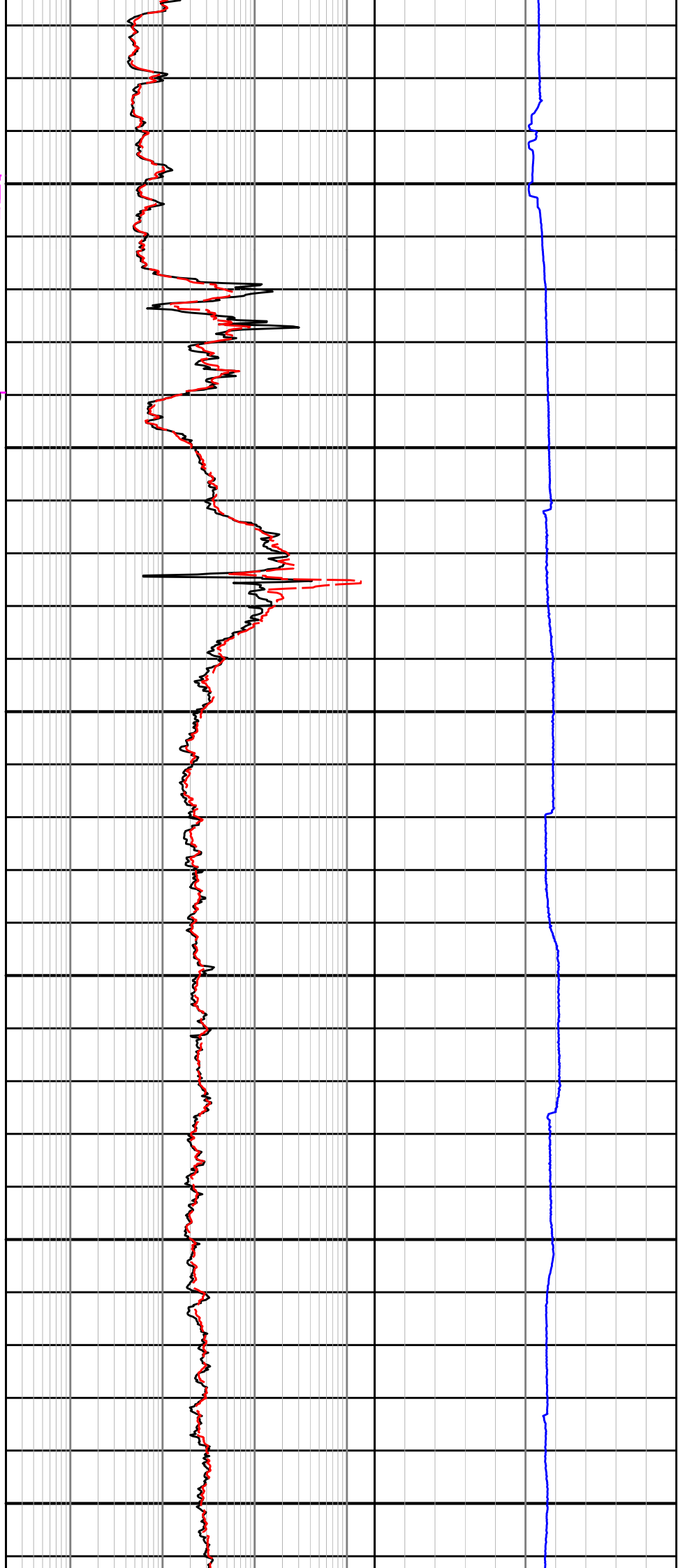
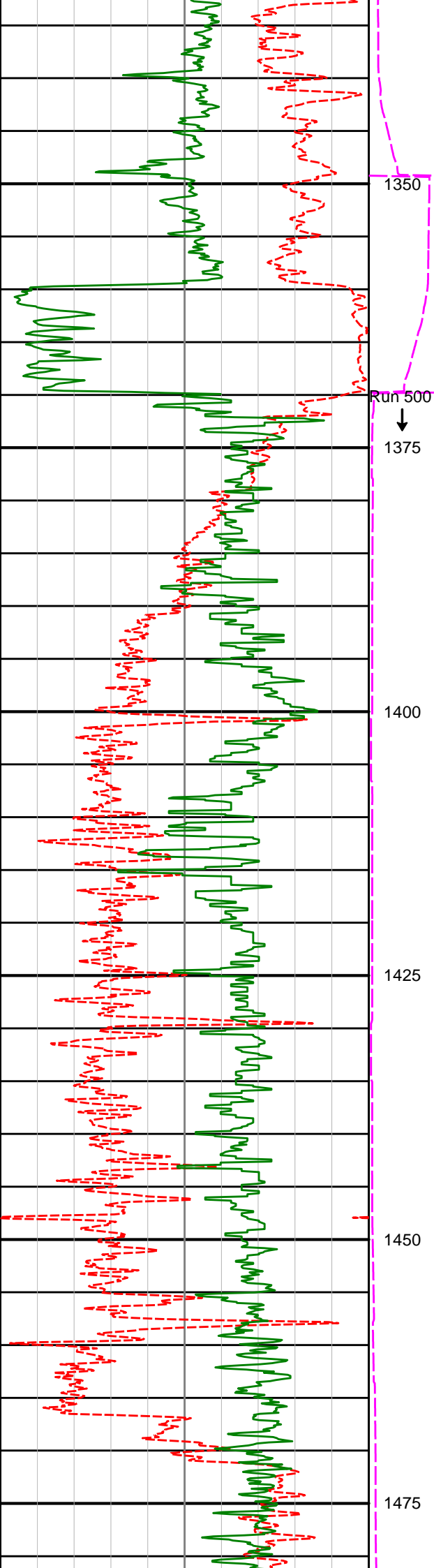
1000

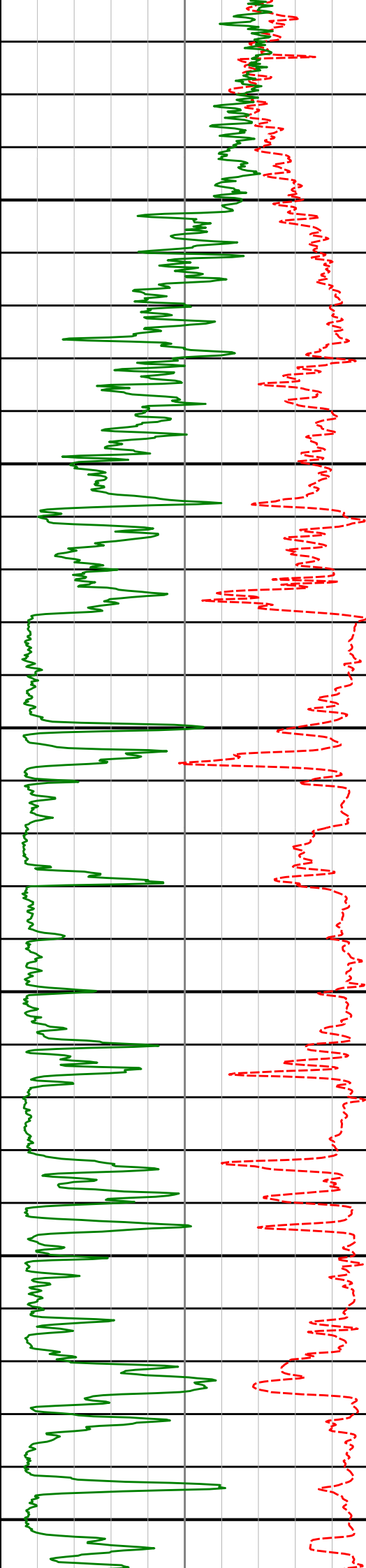
1025



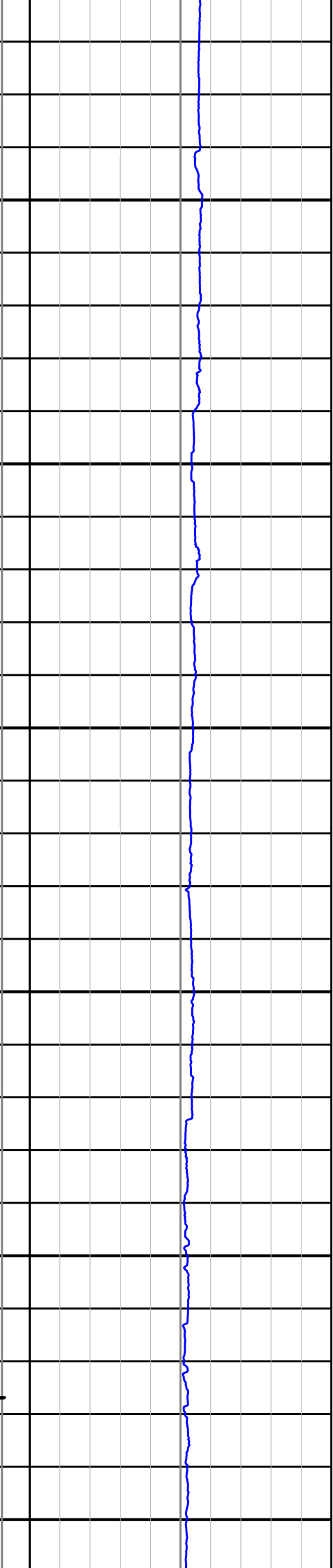
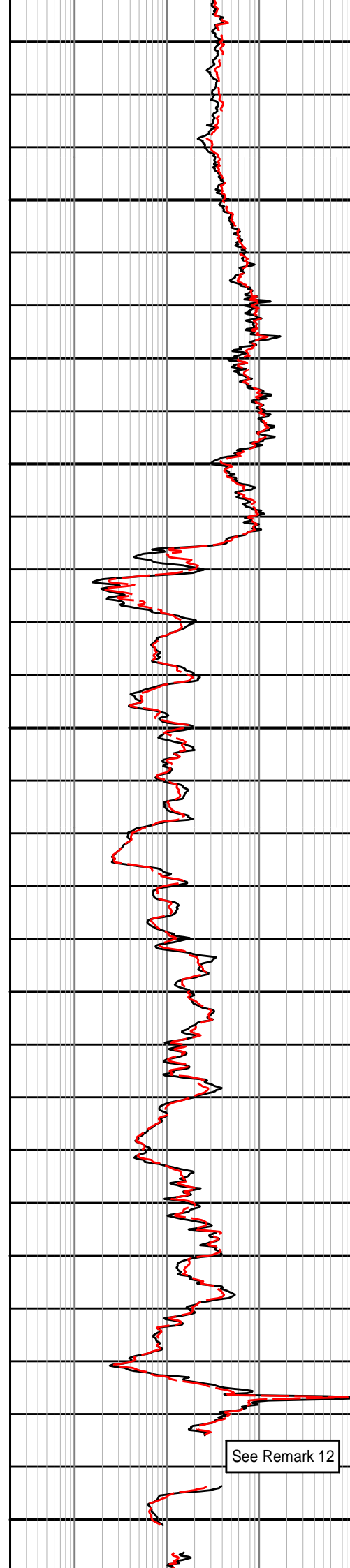




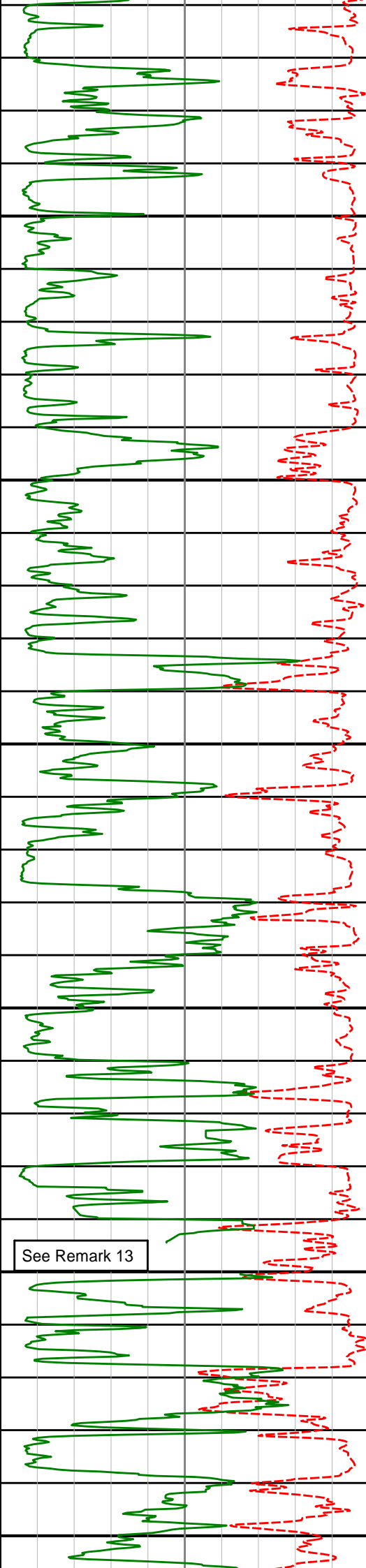




1500
1525
1550
1575
1600
1625



See Remark 12



1650

1675

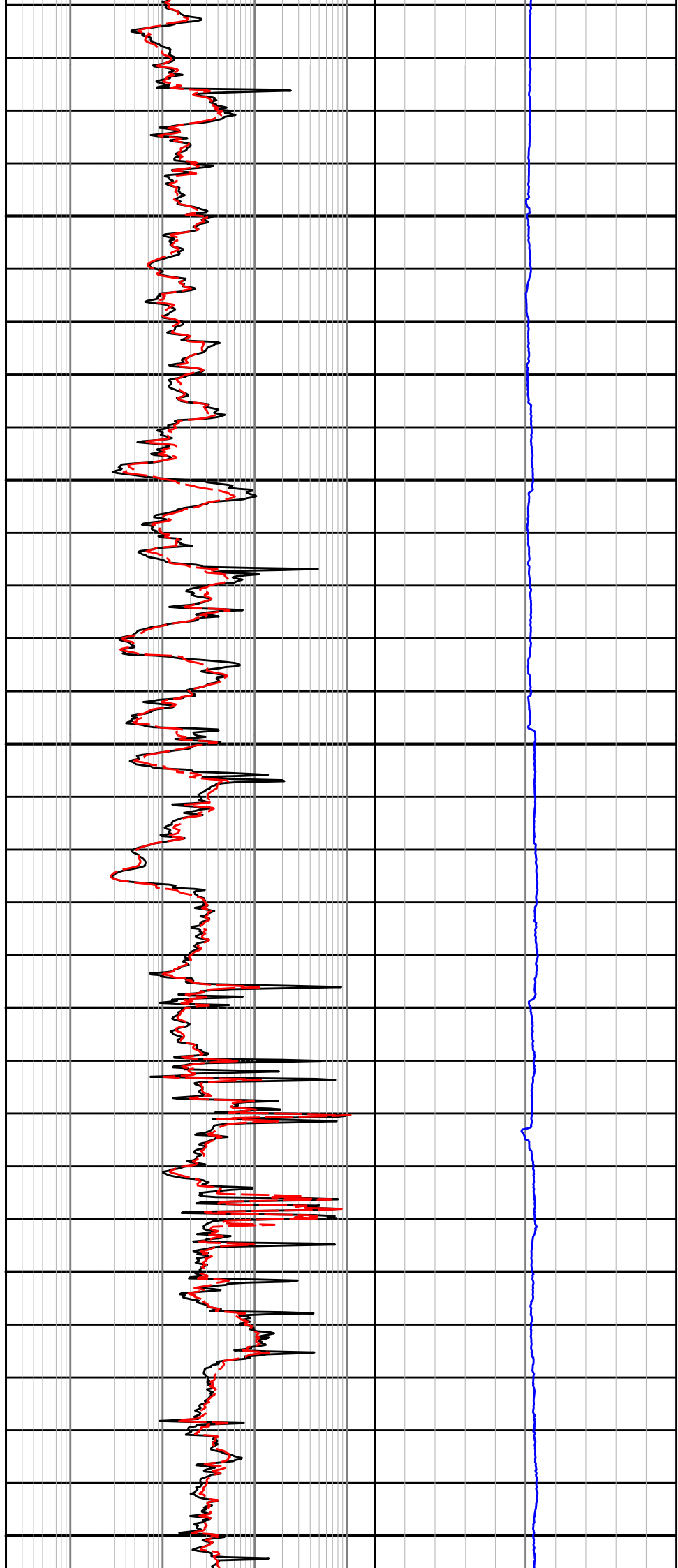
1700

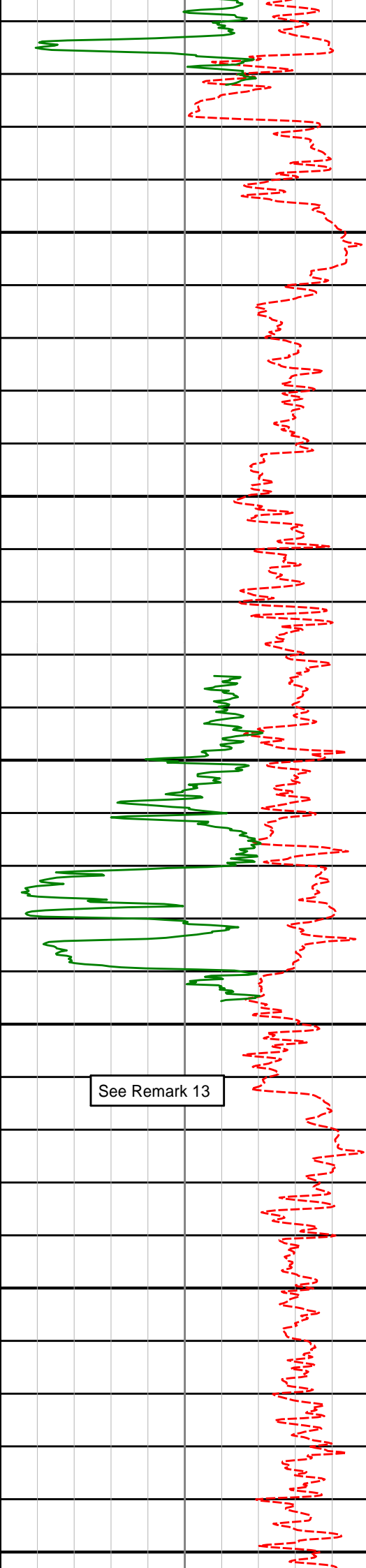
1725

1750

1775

See Remark 13





1800

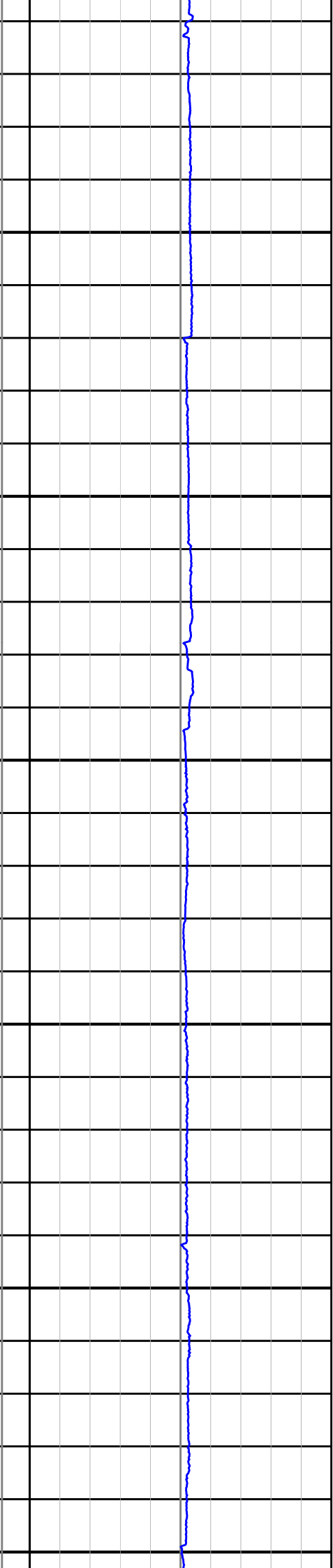
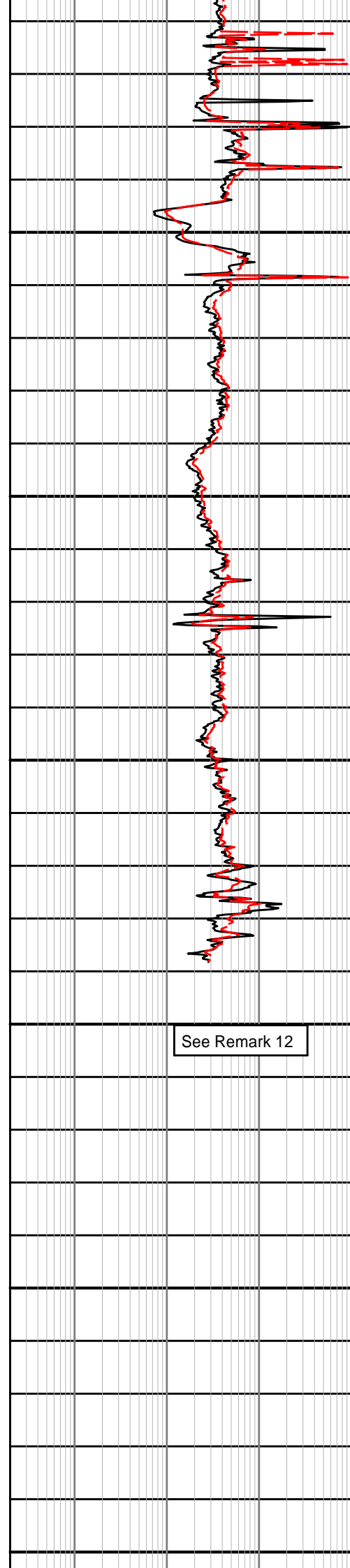
1825

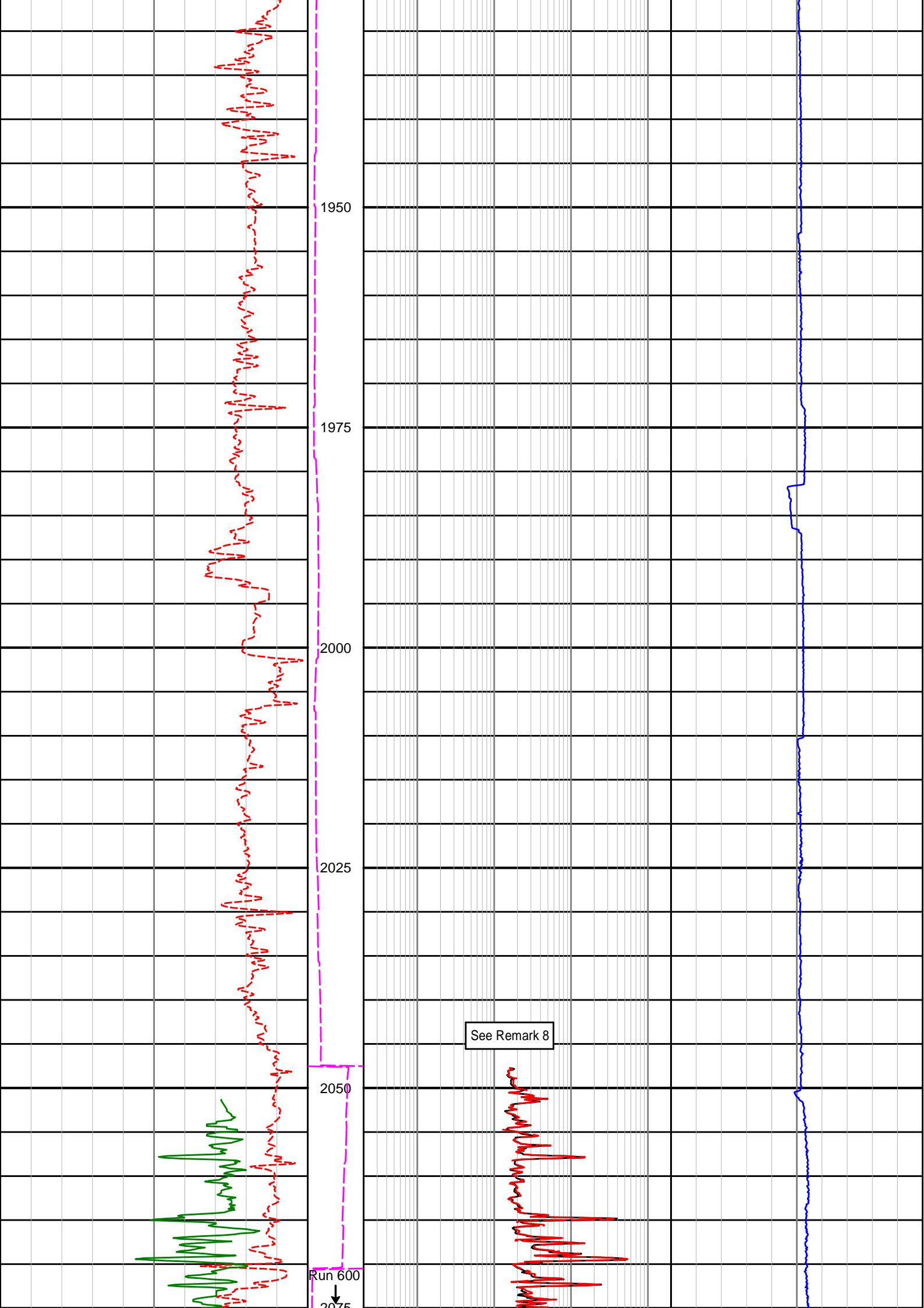
1850

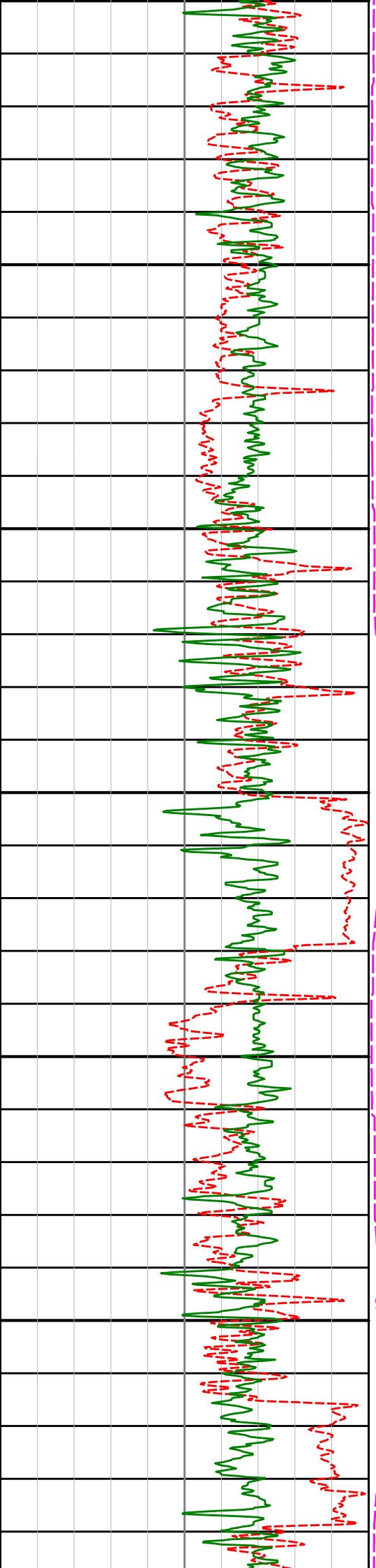
1875

1900

1925







2075

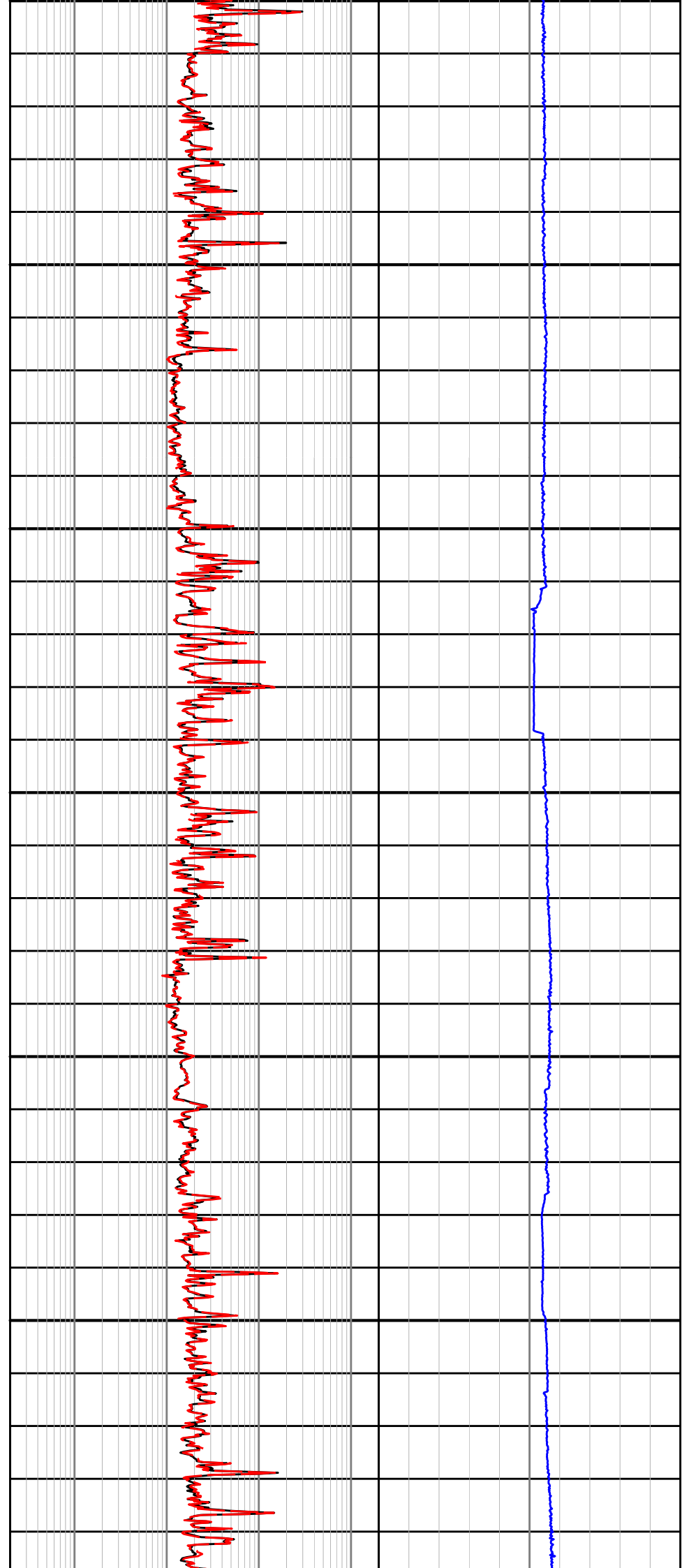
2100

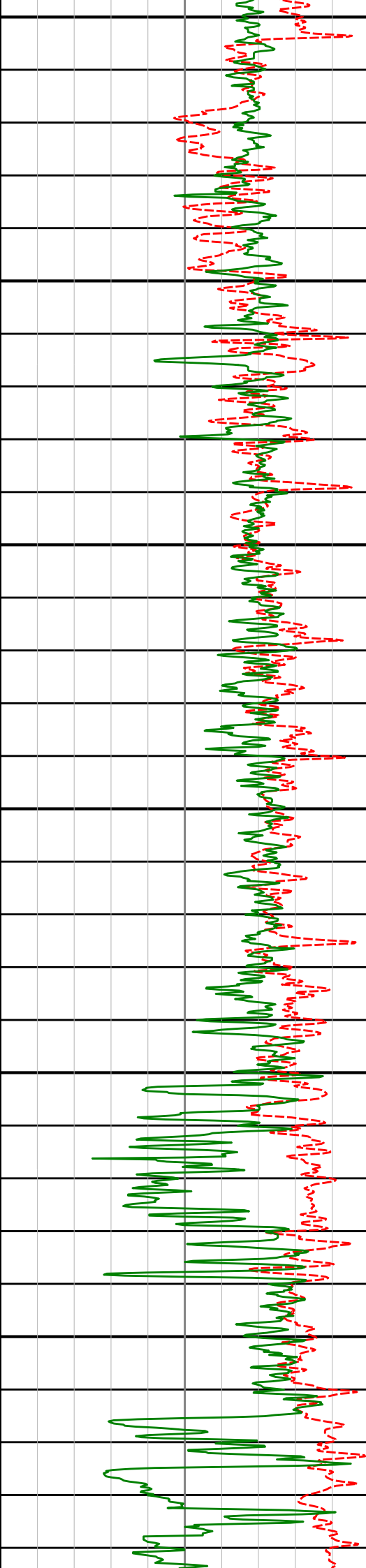
2125

2150

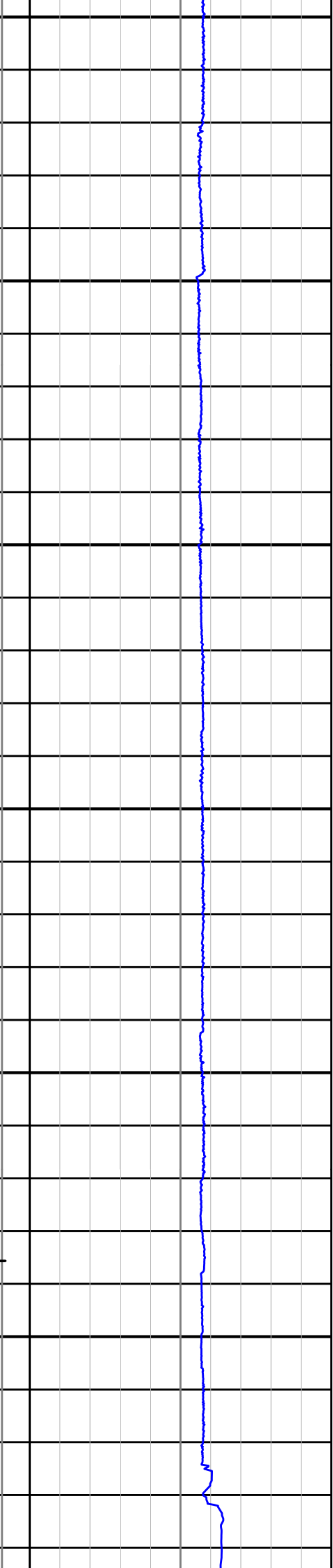
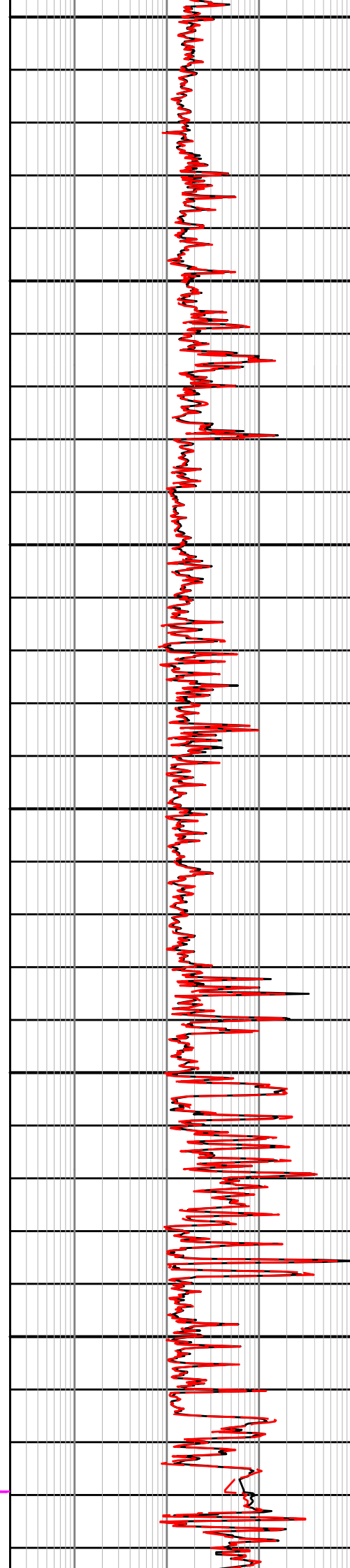
2175

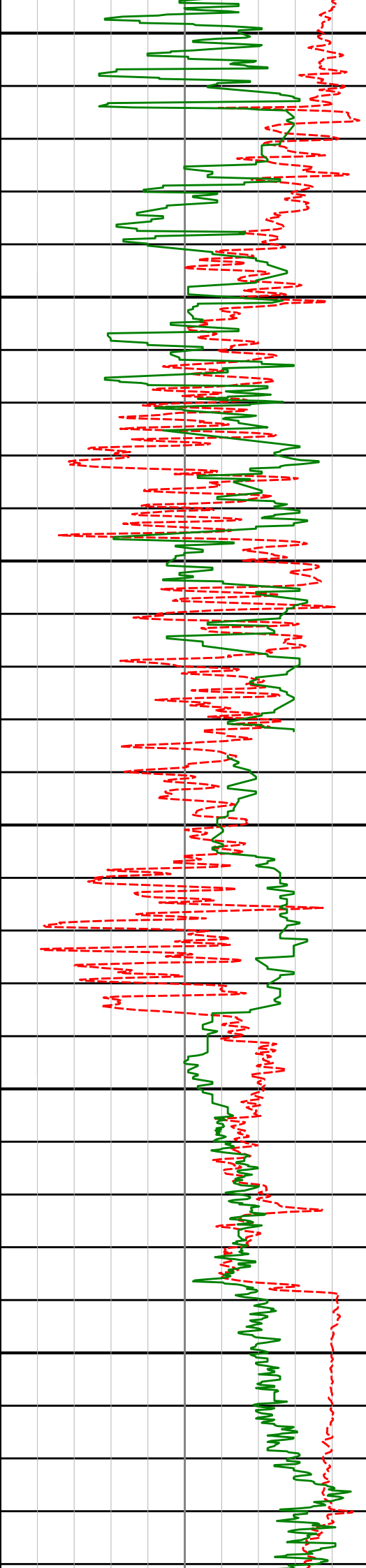
2200





2225
2250
2275
2300
2325
2350





2375

Run 700



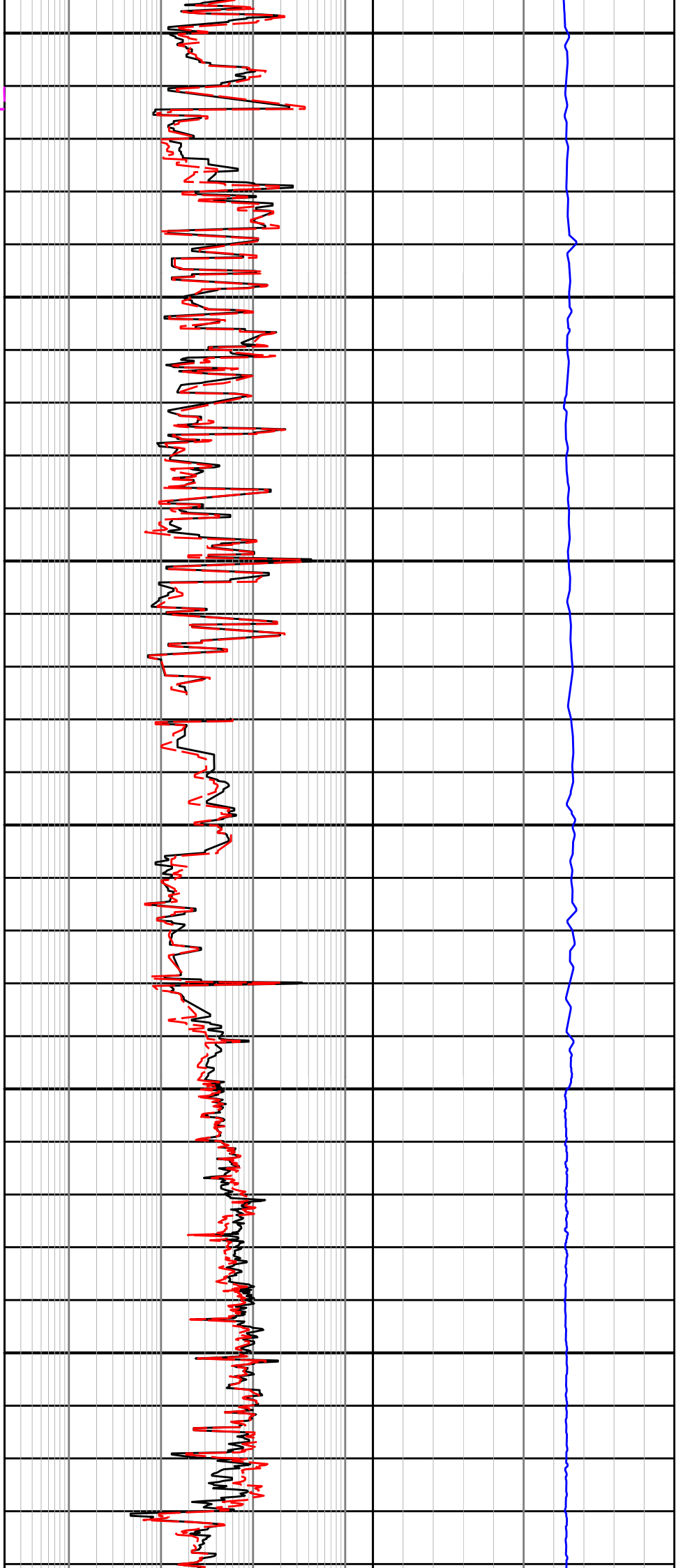
2400

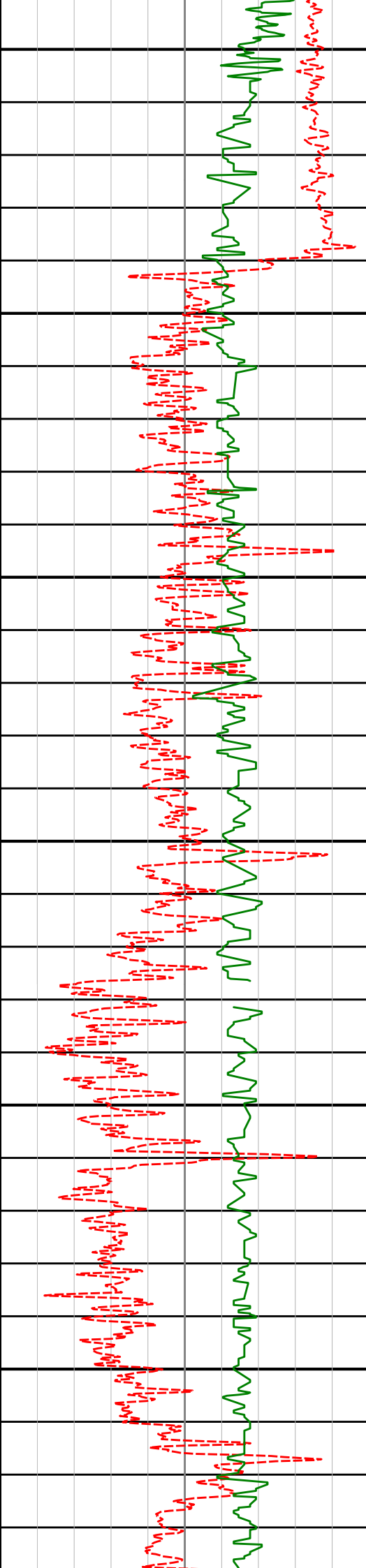
2425

2450

2475

2500





2525

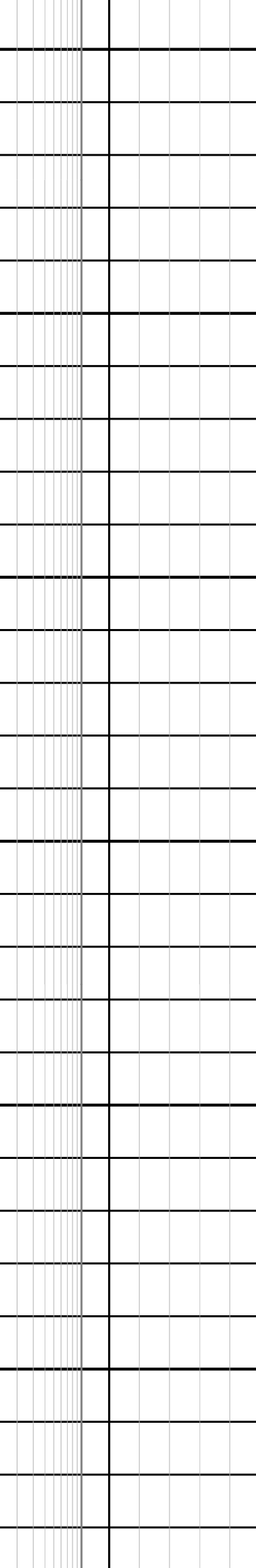
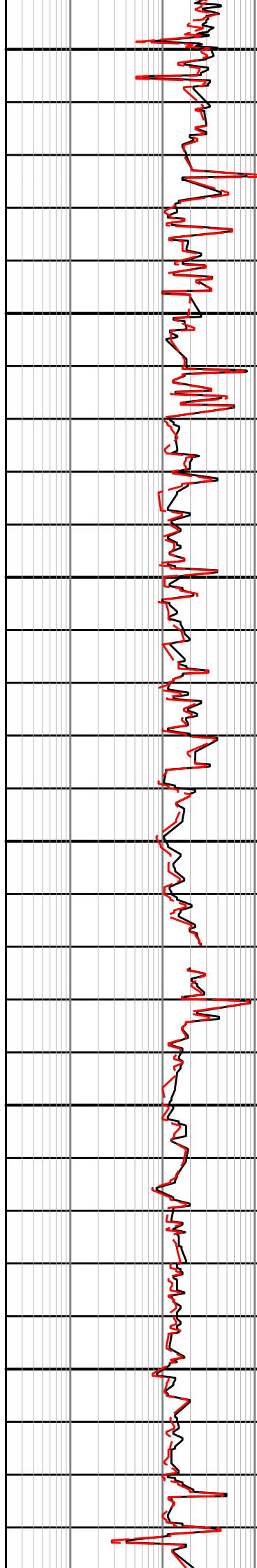
2550

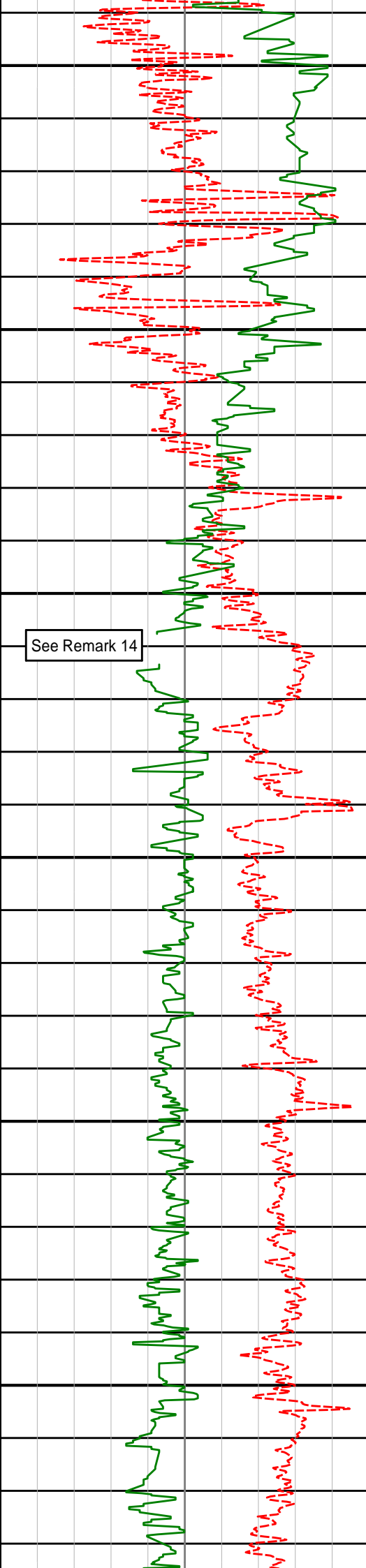
2575

2600

2625

2650





See Remark 14

2675

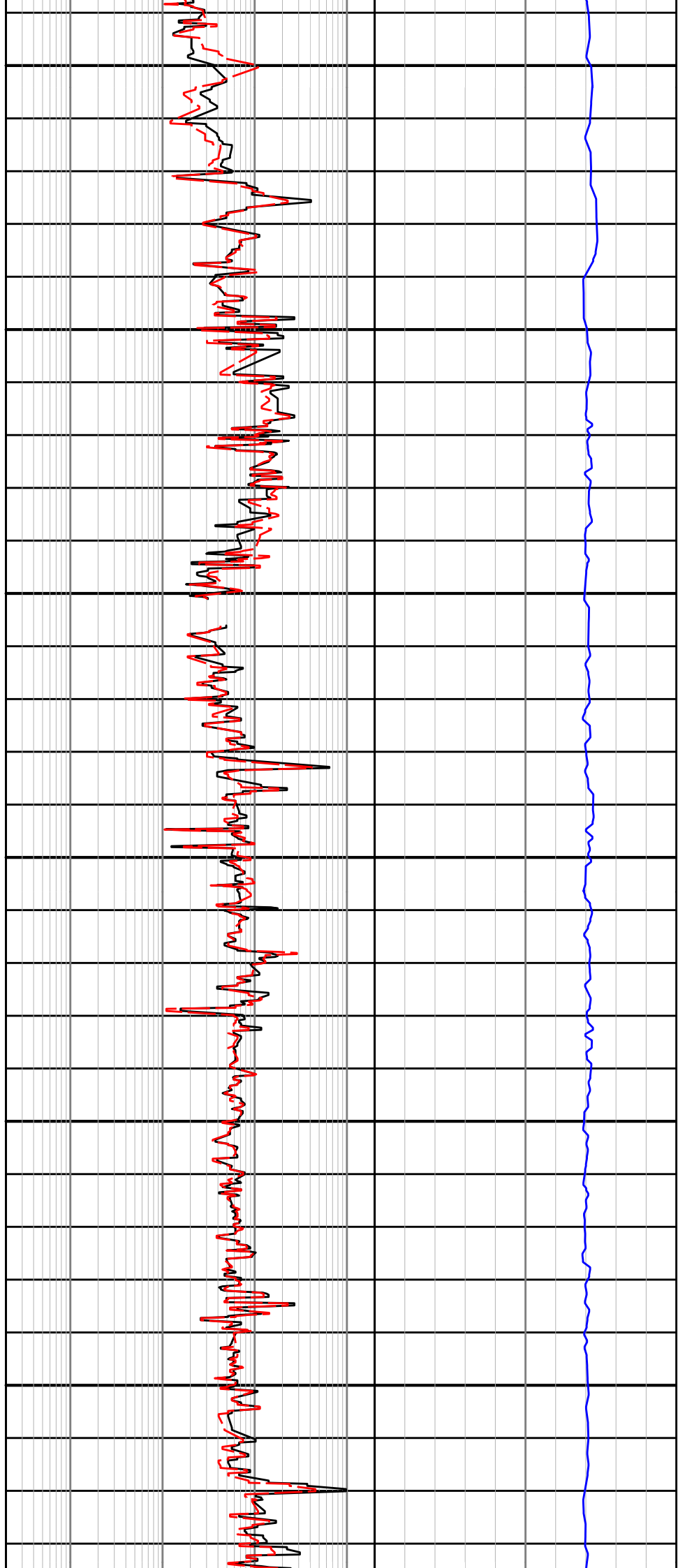
2700

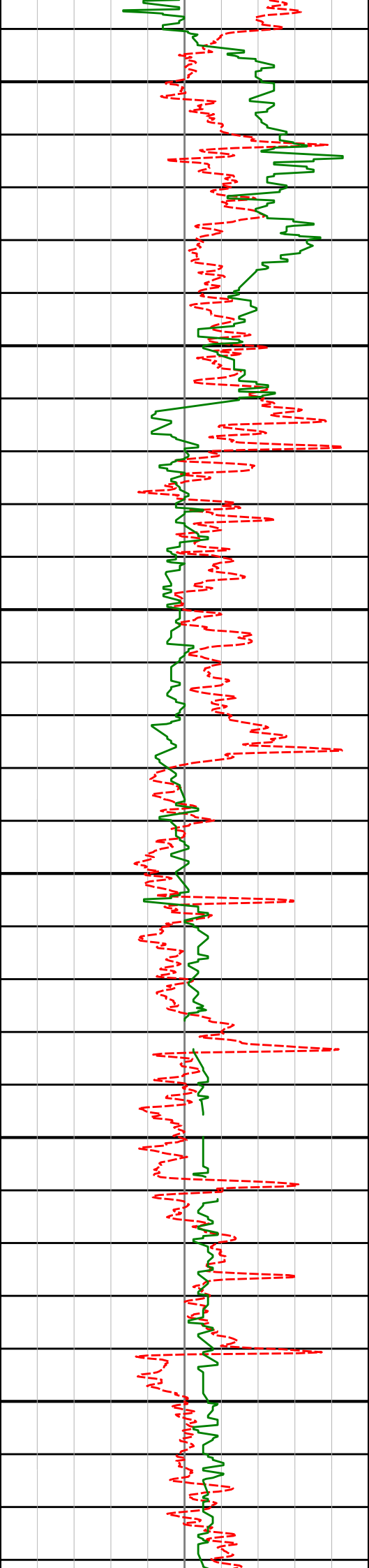
2725

2750

2775

2800





2825

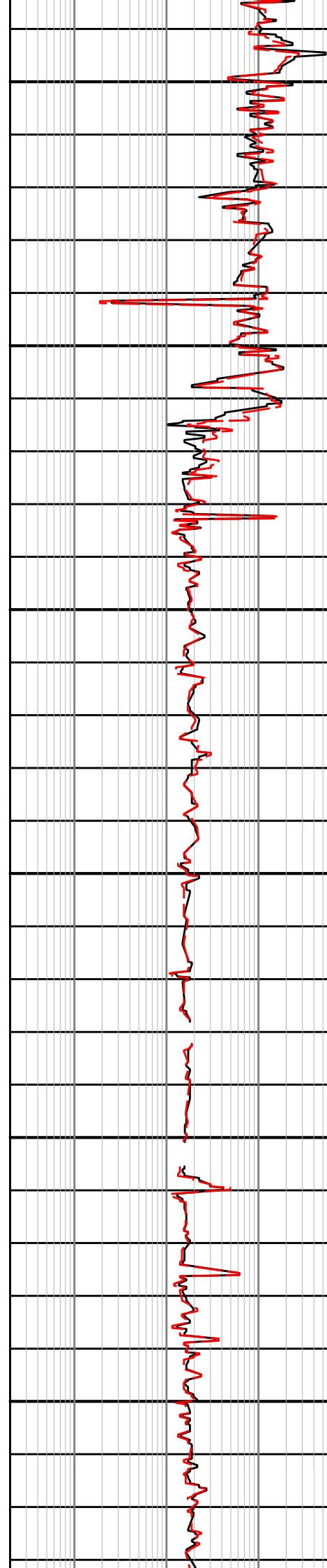
2850

2875

2900

2925

2950



2825

2850

2875

2900

2925

2950

