



Project Logistics Report

IsMins Pty Ltd

Induced Polarisation Survey

Compass Creek Project, NT

Fender Geophysics
3a/5 Waltham St,
Artarmon NSW 2060

www.fendergeophysics.com.au

02 9460 6580

Report Prepared By
Jean-Daniel Nicolas

Project No. 17023

TABLE OF CONTENTS

| | |
|--|----|
| 1. Introduction..... | 3 |
| 2. Survey Specifications and Parameters | 5 |
| 3. Survey Procedures..... | 6 |
| 4. Data Quality Control and Verification | 6 |
| 5. Personnel..... | 6 |
| 6. Line Summary | 7 |
| 7. Verification Plots | 8 |
| APPENDIX 1 – WEEKLY PRODUCTION REPORTS..... | 14 |

List of Figures

| | |
|---|---|
| Figure 1: Overview Map of the Survey Location. | 3 |
| Figure 2: Detailed Map of the Survey Area | 4 |

1. Introduction

In July/August, 2017, Fender Geophysics PL was contracted by IsMins Pty Ltd to conduct an IP survey over the Compass Creek Project area in the Northern Territory. The Compass Creek project is located approximately 140kms south east of Darwin between Hayes Creek and Pine Creek.

This survey operations and logistics report summarises the procedures and equipment used in the acquisition, verification and processing of the induced polarisation data.

The crew began mobilisation from Sydney on 21st July, 2017, with all crew arriving onsite on the 26th July. The crew completed the survey on the 23rd of August and began demobilisation that afternoon.

Field crew accommodation was on site at the Horner's Creek Camp.

Location diagrams shown in GDA94 UTM Zone 52.

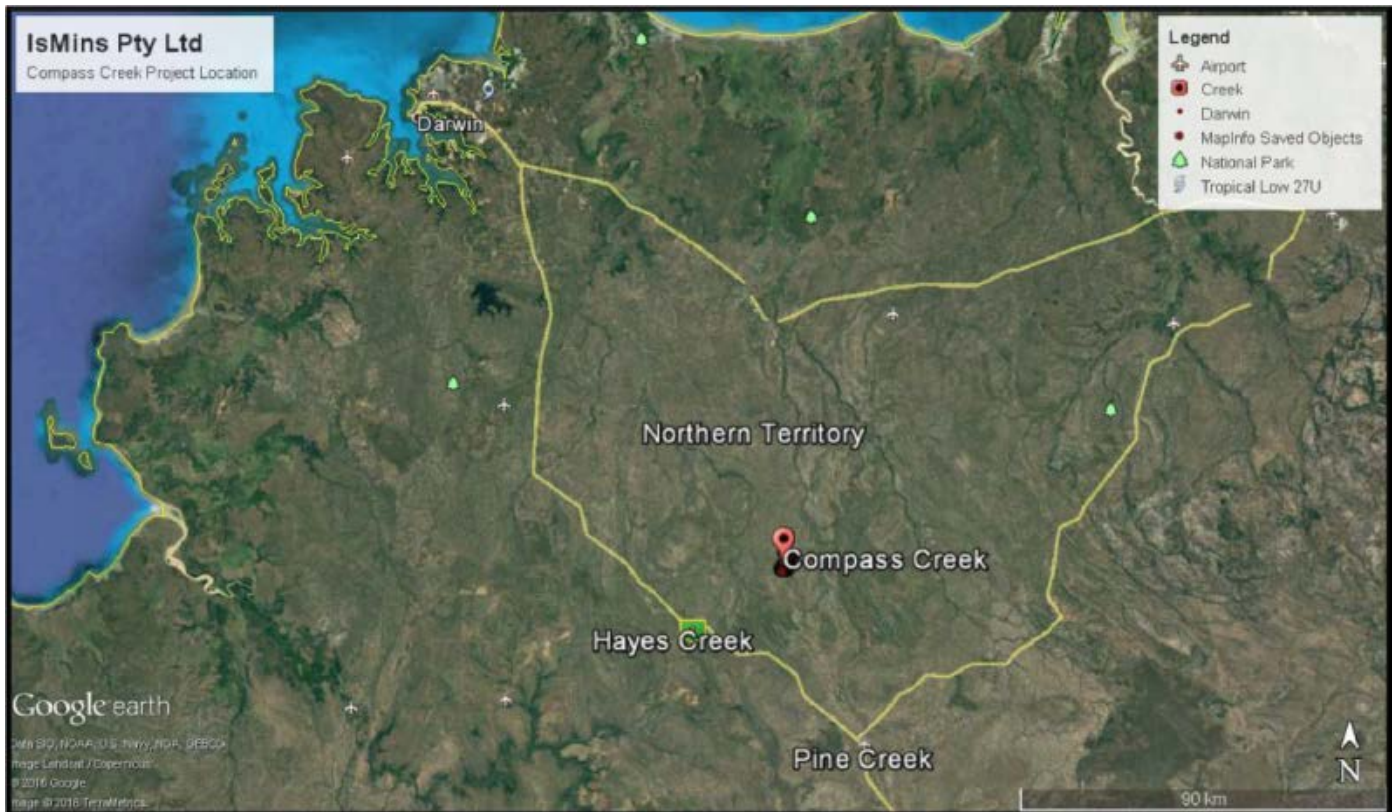


Figure 1: Overview Map of the Survey Location.

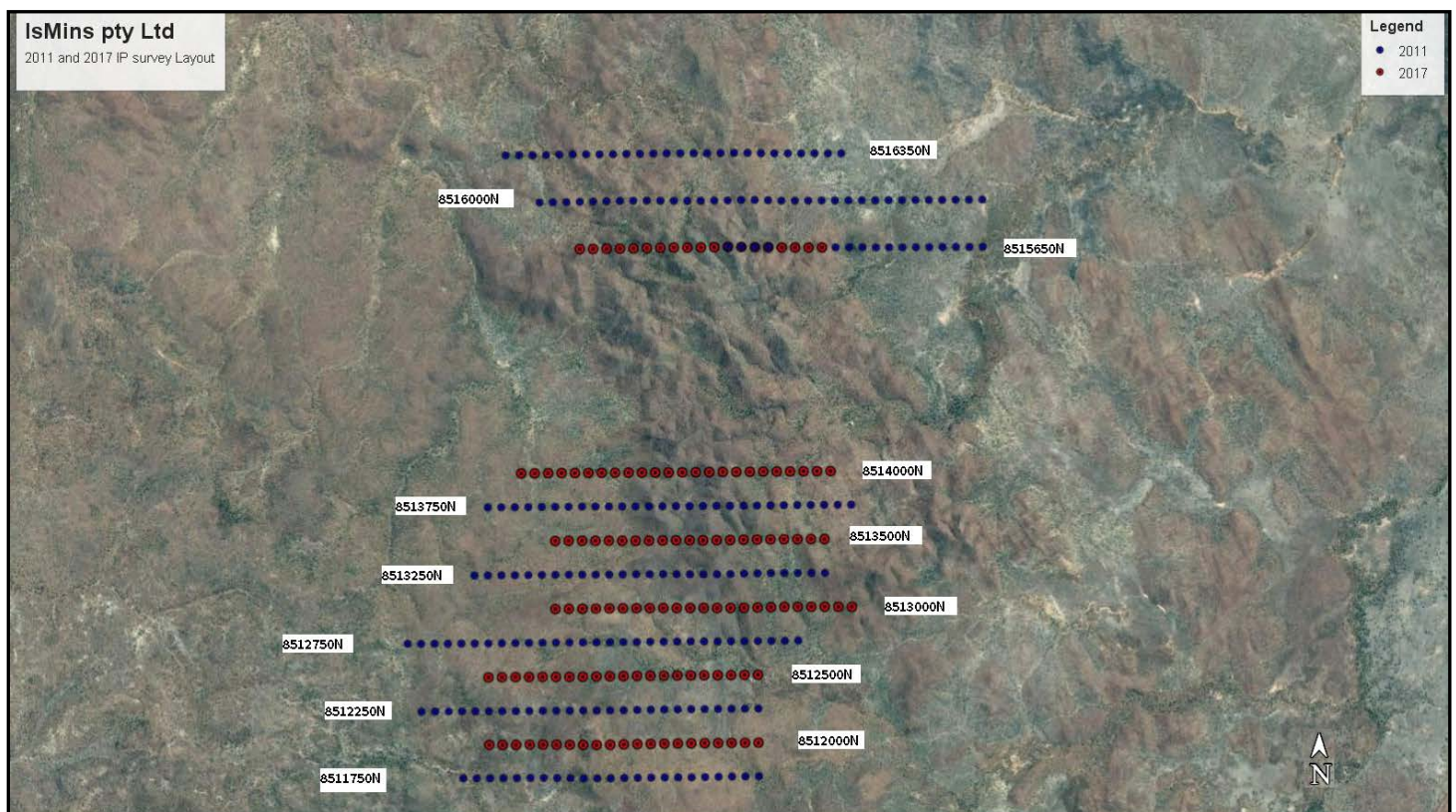


Figure 2: Detailed Map of the Survey Area

2. Survey Specifications and Parameters

Job Number: 17023
 Survey Company: Fender Geophysics PL
 Survey Date: 21st July – 23rd August 2017
 Client: IsMins pty ltd
 Project Name: Compass Creek

| | |
|-----------------------------------|------------------------------------|
| Survey Type | Induced Polarisation |
| Array | Dipole-Dipole |
| Receiver Dipole Length | 100m |
| Transmitter Dipole Length: | 100m |
| Receiver Line Length | 2km |
| Transmitter Line Length | 2km |
| Line Separation | Various |
| Number of Lines | 6 |
| Total Line km | 12km |
| Domain and Cycle | Time domain – 2 seconds or 0.125Hz |
| Coordinate System | GDA 94 MGA Zone 52 |

| Item | Quantity |
|--|----------|
| IP Receiver – Scintrex IPR12 | 2 |
| TSQ4 Kohler Generator and Transmitter | 1 |
| Rx Cables – Cat 6, 8 core data cable | 40 |
| Tx Cable – 2.5mm multi strand flex | 4km |
| Transmitting Electrodes; 5 mm aluminium plates 800 mm x 120 mm | 30 |
| Receiver Electrodes; Non polarising porous pot style electrode | 38 |
| Garmin GPS Units | 2 |

3. Survey Procedures

The frequency used for the survey was 0.125Hz or 2 second timing. The receiver synchronizes with the signal transmitted from the transmitter and records the data during the off time. The decay over time of the signal indicates the chargeability properties of the rocks.

The receiving electrodes are a non-polarising porous pot style electrode with a copper sulphate solution. These are connected to the receiver via a cat 6 data cable. Data was collected up to 8 dipoles per station.

The transmitting electrodes are aluminum plates 800mm X 120mm X 5mm. They are dug into the ground on their edge, soaked with water and buried. The electrodes are connected to the transmitter via a single core multi strand flex transmission wire and heavy duty alligator clips to the plates.

The 2017 IP survey was a follow up of the previous survey conducted by Fender Geophysics in 2011. The lines read in 2017 were infill lines between those completed previously. Line 8515650N in 2017 was a western extension of the same line completed previously.

4. Data Quality Control and Verification

Data was downloaded from the receiver and viewed at the end of each day. Quality control was carried out by the field personnel and in the office on a daily basis. Profiles of the preliminary data along with raw data were delivered to the client.

Fender's data quality (QC) control begins in the field. Throughout the data reading procedures, receiver crew visually inspect standard deviations in the data and make sure it is at an acceptable level. Multiple readings are taken at each station. Acquired data is downloaded from the receiver IPR12 units onto a laptop at the conclusion of each day.

The data undergoes quality control using TQIP and Windisp software. TQIP enables visual inspection of the decay curves for individual channels and the omission of any false anomalies, such as those caused by cultural effects e.g. fences.

Anomalous readings are additionally cross-referenced with field observations and aerial photographs to ascertain whether they may be caused by surface features. Further in-depth processing and interpretation of the data is conducted at Fender's head office during the survey and after it has been completed.

5. Personnel

Client Representative: Jim McGregor Dawson (Alluvial Minerals Limited)

Consultant: Steve Collins

The following Fender personnel were involved in the project:

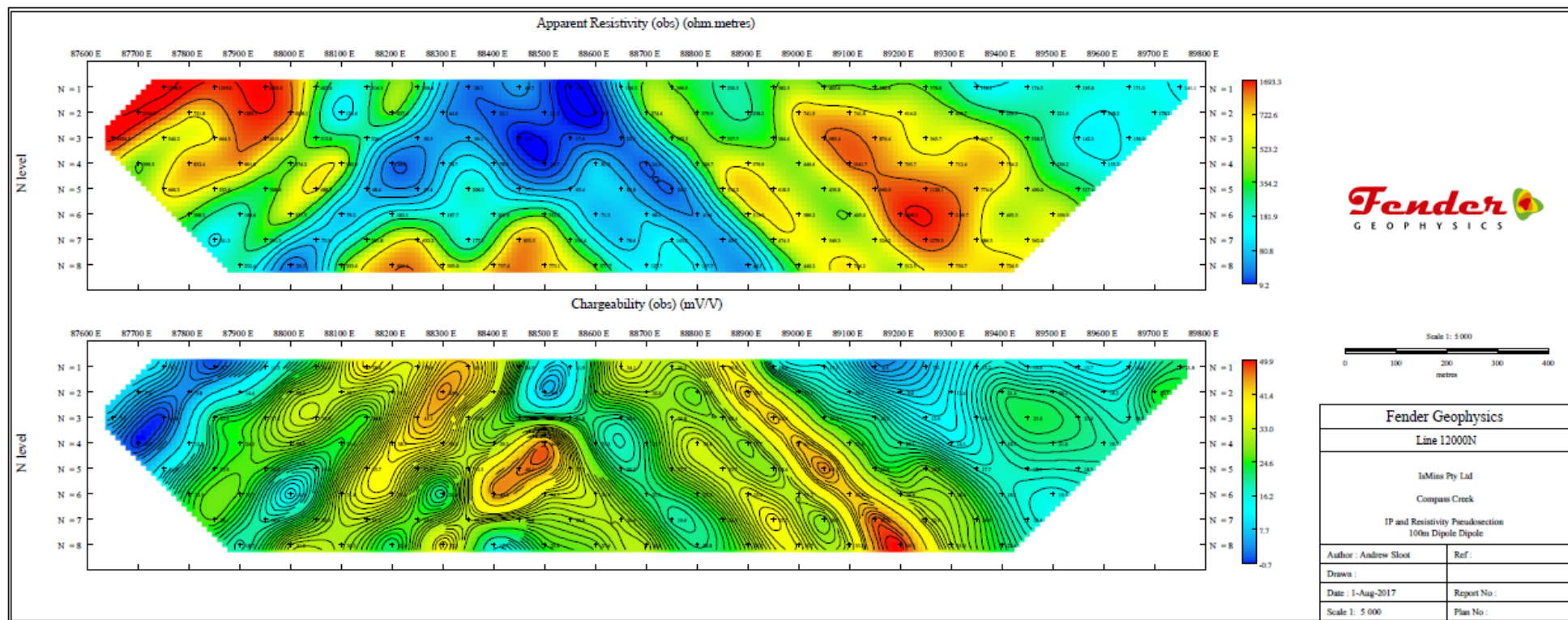
| | |
|---------------------------------|---------------------|
| Project Manager/Geophysicist: | Andrew Slood |
| Field Crew Leader/Geophysicist: | Jean-Daniel Nicolas |
| Field Assistants/Geophysicist: | Tyler Williams |
| | Sam Mulholland |
| | Simon Elliot |

6. Line Summary

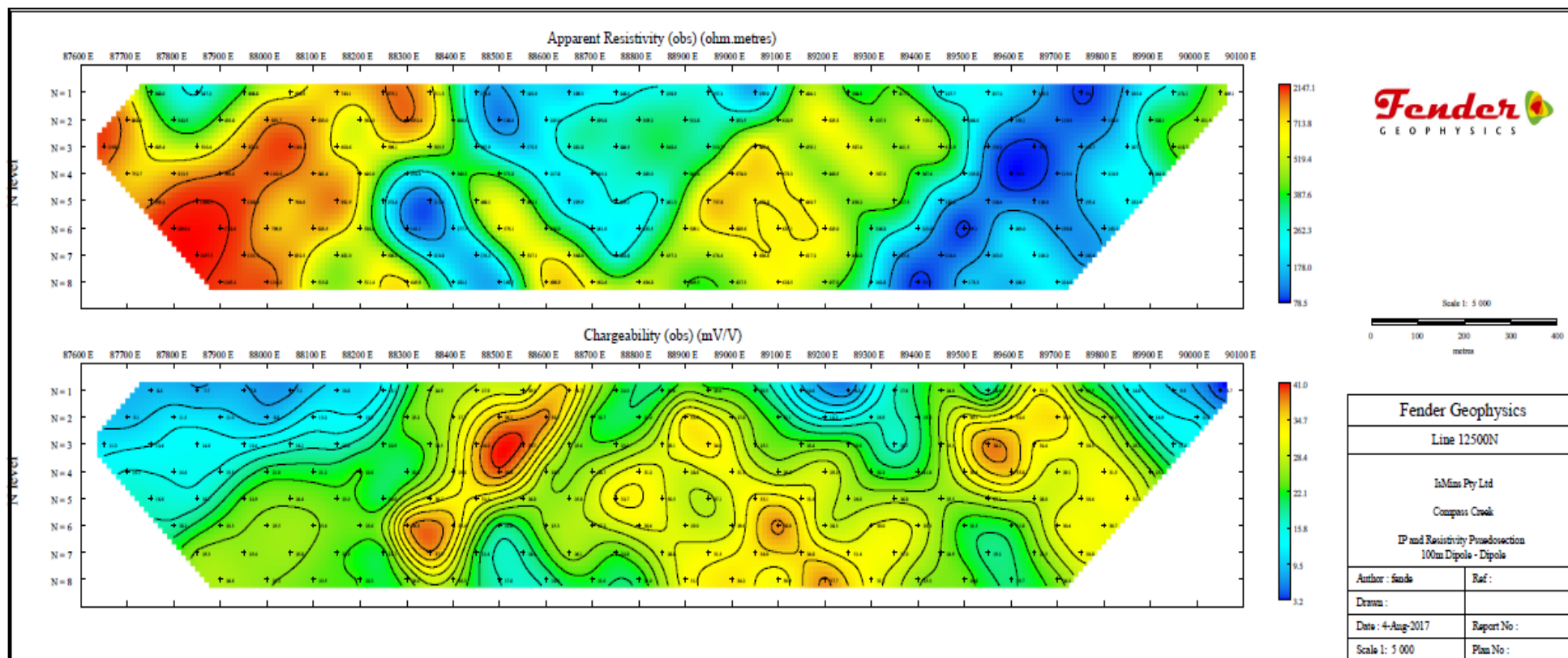
Coordinates are in GDA94 Zone 52H and define the survey start and end coordinates.

| 2017 | | Line - MGA94N | MGA94E - start | MGA94E - End | Total Length |
|------|------------|---------------|----------------|--------------|--------------|
| | South Grid | 8512000N | 787800E | 789800E | 2km |
| | | 8512500N | 787800E | 790100E | 2.3km |
| | | 8513000N | 788300E | 790600E | 2.4km |
| | | 8513500N | 788300E | 790300E | 2km |
| | | 8514000N | 788050E | 790350E | 2.4km |
| | | | | | |
| 2011 | North Grid | 8515650N | 788500E | 790400E | 2km |
| | | | | | |
| | | Line - MGA94N | MGA94E - start | MGA94E - End | Total Length |
| | South Grid | 8511750N | 787900E | 789700E | 1.8km |
| | | 8512250N | 787600E | 789700E | 2.1km |
| | | 8512750N | 787500E | 790000E | 2.5km |
| | | 8513250N | 788000E | 790400E | 2.4km |
| | | 8513750N | 788100E | 790400E | 2.3km |
| | | | | | |
| | North Grid | 8515650N | 789900E | 791400E | 1.5km |
| | | 8516000N | 788500E | 791400E | 2.9km |
| | | 8516350N | 788250E | 790350E | 2.1km |

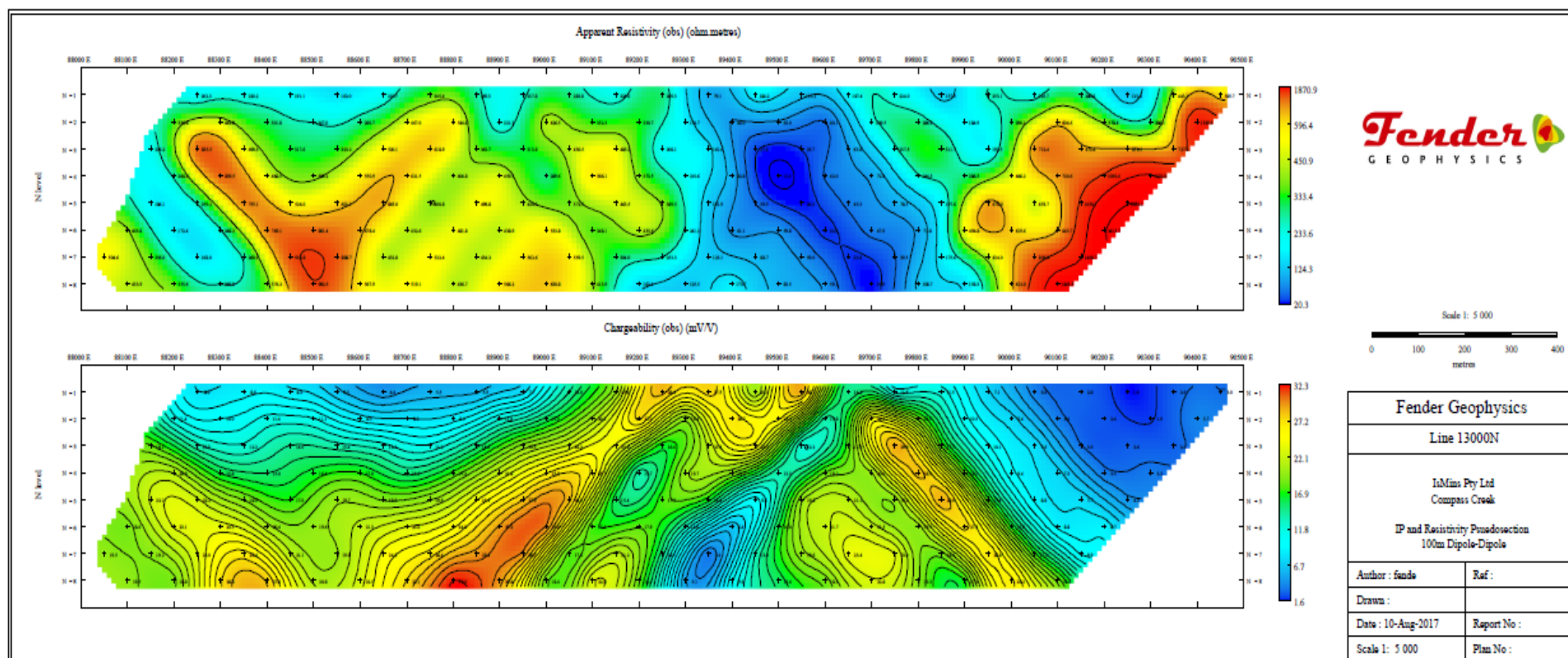
7. Verification Plots



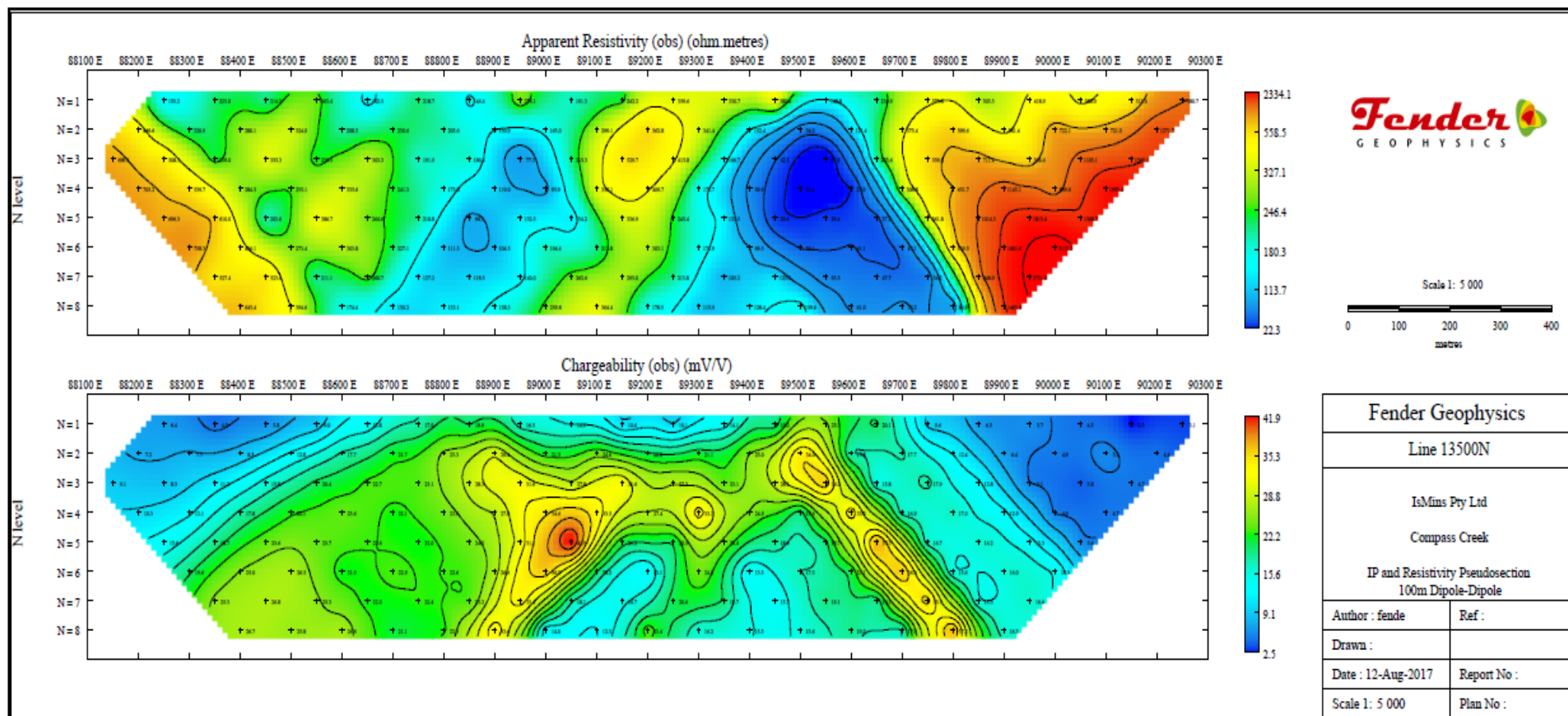
LINE 8512000N



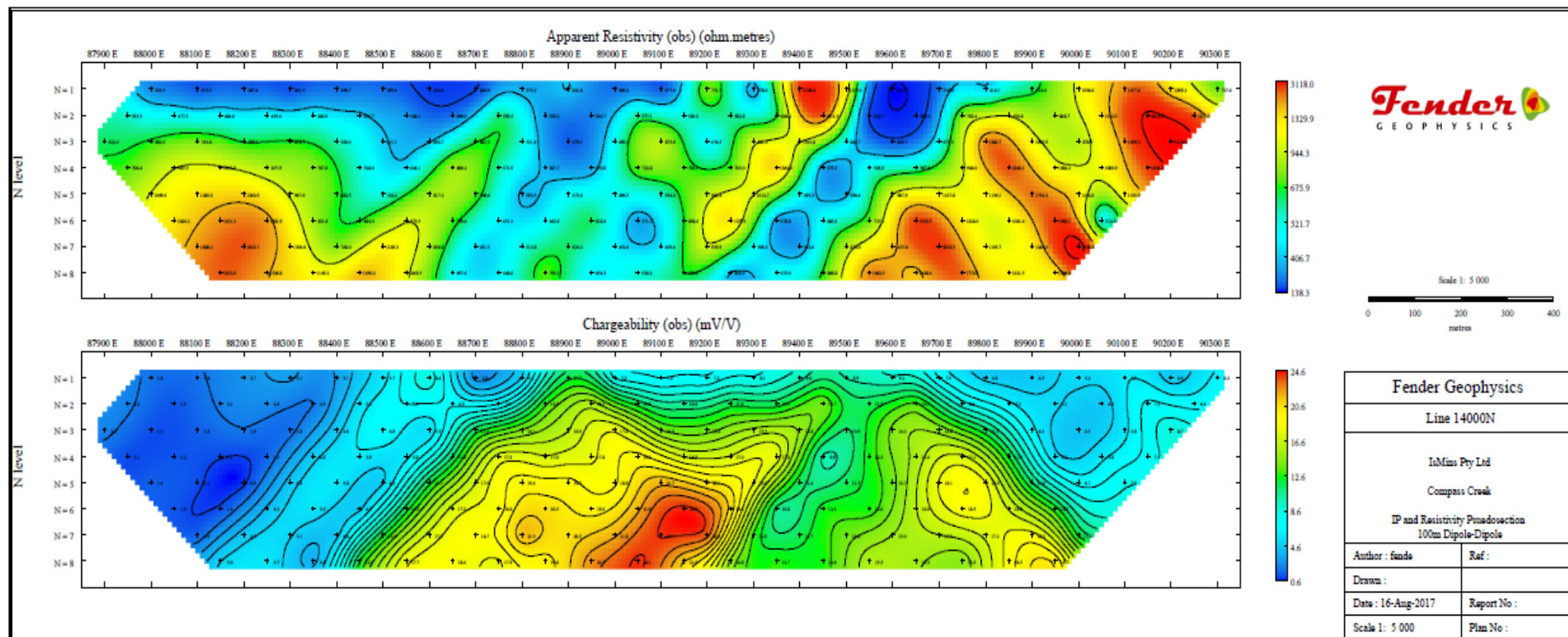
LINE 8512500N



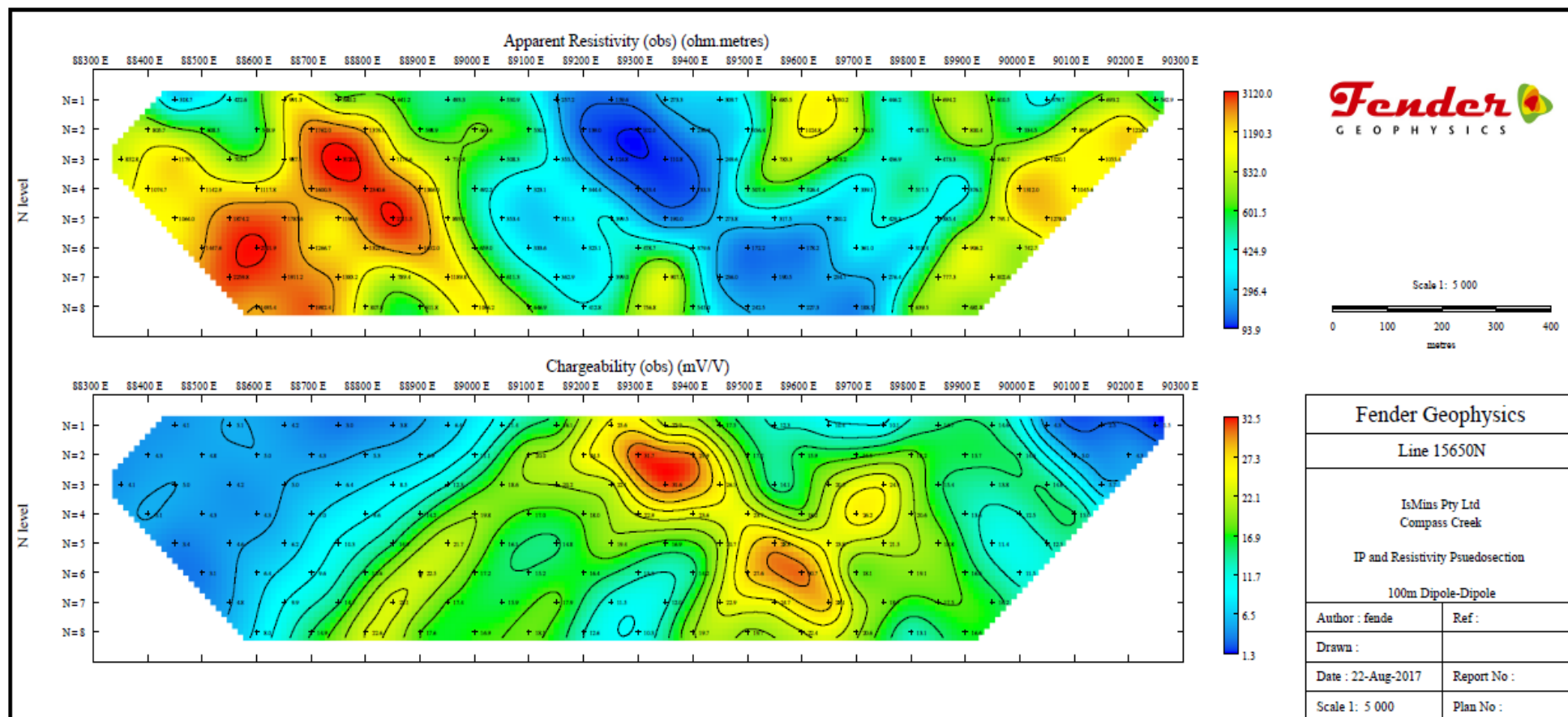
LINE 8513000N



LINE 8513500N





LINE 8514000N





LINE 8515650N


APPENDIX 1 – WEEKLY PRODUCTION REPORTS


| | | | | | | | | | |
|---|--------------------------|---------------|--|--------------------|----------------|-----|----------|---------|-------|
|  | Weekly Production Report | | | Survey Specs | | | | | |
| | Project Number: | 17023_IsMins | | IP | | | | | |
| | Client: | IsMins | | Dipole Dipole | | | | | |
| | Project: | Compass Creek | | 100m dipole length | | | | | |
| | Project Manager: | JD Nicholas | | | | | | | |
| Monday, 17 July 2017 | | | | Line | Start | End | Stations | Rate | Hours |
| | | | | | | | | Prod | |
| | | | | | | | | Standby | |
| | | | | | | | | Mobe | |
| | | | | | | | | | |
| | | | | | Total Stations | | 0 | B-Down | |
| Tuesday, 18 July 2017 | | | | Line | Start | End | Stations | Rate | Hours |
| | | | | | | | | Prod | |
| | | | | | | | | Standby | |
| | | | | | | | | Mobe | |
| | | | | | | | | | |
| | | | | | Total Stations | | 0 | B-Down | |
| Wednesday, 19 July 2017 | | | | Line | Start | End | Stations | Rate | Hours |
| | | | | | | | | Prod | |
| | | | | | | | | Standby | |
| | | | | | | | | Mobe | |
| | | | | | | | | | |
| | | | | | Total Stations | | 0 | B-Down | |
| Thursday, 20 July 2017 | | | | Line | Start | End | Stations | Rate | Hours |
| | | | | | | | | Prod | |
| | | | | | | | | Standby | |
| | | | | | | | | Mobe | |
| | | | | | | | | | |
| | | | | | Total Stations | | 0 | B-Down | |
| Friday, 21 July 2017 | | | | Line | Start | End | Stations | Rate | Hours |
| Tyler and Greg Left Sydney office at 11 am and stayed the night in dubbo. | | | | | | | | Prod | |
| | | | | | | | | Standby | |
| | | | | | | | | Mobe | 10 |
| | | | | | | | | | |
| | | | | | Total Stations | | 0 | B-Down | |
| Saturday, 22 July 2017 | | | | Line | Start | End | Stations | Rate | Hours |
| Tyler and Greg mobilised to Cunnamulla. | | | | | | | | Prod | |
| | | | | | | | | Standby | |
| | | | | | | | | Mobe | 10 |
| | | | | | | | | | |
| | | | | | Total Stations | | 0 | B-Down | |
| Sunday, 23 July 2017 | | | | Line | Start | End | Stations | Rate | Hours |
| Tyler and Greg continued on to Longreach | | | | | | | 0 | Prod | |
| | | | | | | | | Standby | |
| | | | | | | | | Mobe | 10 |
| | | | | | | | | | |
| | | | | | Total Stations | | 0 | B-Down | |
| Weekly Production Summary | | | | Stations Total | | 0.0 | Prod | 0.0 | |
| | | | | Production Days | | 0.0 | Stanby | 0.0 | |
| | | | | Stations Per Day | | | Mobe | 30.0 | |
| | | | | | | | B-Down | 0.0 | |


|  | Weekly Production Report | | | Survey Specs | | | | | |
|---|--------------------------|---------------|--|--------------------|--------------|------------|-----------------|-------------|--------------|
| | Project Number: | 17023_IsMins | | IP | | | | | |
| | Client: | IsMins | | Dipole Dipole | | | | | |
| | Project: | Compass Creek | | 100m dipole length | | | | | |
| | Project Manager: | JD Nicholas | | | | | | | |
| Monday, 24 July 2017 | | | | Line | Start | End | Stations | Rate | Hours |
| Tyler and Greg mobilised to Mt Isa | | | | | | | | Prod | |
| | | | | | | | | Standby | |
| | | | | | | | | Mobe | 10 |
| | | | | | | | | | |
| | | | | | | | | | |
| | | | | Total Stations | | 0 | B-Down | | |
| Tuesday, 25 July 2017 | | | | Line | Start | End | Stations | Rate | Hours |
| Tyler and Greg mobilised to Tennant Creek (11hrs) Sam and JD mobilise from Brisbane, and Sydney respectively Do shopping in Darwin. Take hired Thrifty ute to Adelaide Creek. (8hrs) | | | | | | | | Prod | |
| | | | | | | | | Standby | |
| | | | | | | | | Mobe | 11 |
| | | | | | | | | | |
| | | | | | | | | | |
| | | | | Total Stations | | 0 | B-Down | | |
| Wednesday, 26 July 2017 | | | | Line | Start | End | Stations | Rate | Hours |
| Tyler and Greg mobilise to Homers Creek Camp (on-site accommodation). Very long drive. (15hrs) JD and Sam mobilise to Homers Creek camp on-site. Meet client (Jim) and do recon of site access. (8hrs) | | | | | | | | Prod | |
| | | | | | | | | Standby | |
| | | | | | | | | Mobe | 15 |
| | | | | | | | | | |
| | | | | | | | | | |
| | | | | Total Stations | | 0 | B-Down | | |
| Thursday, 27 July 2017 | | | | Line | Start | End | Stations | Rate | Hours |
| Crew unpack loaded vehicles and move all gear to on-site lay down area. Slow going to drive trailers through washed out roads. Service quad bike, but unable to swap fuel filter (hose crimped, would be unable to replace or re-do properly) Begin set-up of line 8512000N at 1300. Slow going, very rocky and very tall dry grass. Set-up half of tx and rx, finish at 1630hrs | | | | | | | | Prod | |
| | | | | | | | | Standby | 10 |
| | | | | | | | | Mobe | |
| | | | | | | | | | |
| | | | | | | | | | |
| | | | | Total Stations | | 0 | B-Down | | |
| Friday, 28 July 2017 | | | | Line | Start | End | Stations | Rate | Hours |
| Crew continue set up of line 8512000N. Finish set up at 1400 Troubleshoot tx issue until pack up at 1700. Not solved yet. Possibly ground conditions | | | | | | | | Prod | |
| | | | | | | | | Standby | 10 |
| | | | | | | | | Mobe | |
| | | | | | | | | | |
| | | | | | | | | | |
| | | | | Total Stations | | 0 | B-Down | | |
| Saturday, 29 July 2017 | | | | Line | Start | End | Stations | Rate | Hours |
| Arrive on site 0740. Pick up wire and jerries previously left on line. Do quick recon of later used survey area. Run tests on transmitter, determine to be troublesome ground conditons. Dig extra plates (6) at some stations and cart water to them. Commence reading at 1500. | | | | 8512000 | 787800 | 787900 | 1 | Prod | |
| | | | | | | | | Standby | 10 |
| | | | | | | | | Mobe | |
| | | | | | | | | | |
| | | | | | | | | | |
| | | | | Total Stations | | 1 | B-Down | | |
| Sunday, 30 July 2017 | | | | Line | Start | End | Stations | Rate | Hours |
| Top up all pots and troubleshoot. Read repeat and 6 additional stations. | | | | 8512000 | 787900 | 788400 | 6 | Prod | 10 |
| | | | | | | | | Standby | |
| | | | | | | | | Mobe | |
| | | | | | | | | | |
| | | | | | | | | | |
| | | | | Total Stations | | 6 | B-Down | | |
| Weekly Production Summary | | | | Stations Total | | 7.0 | Prod | 10.0 | |
| | | | | Production Days | | 1.0 | Stanby | 30.0 | |
| | | | | Stations Per Day | | 7.0 | Mobe | 36.0 | |
| | | | | | | | B-Down | 0.0 | |

| | | | | | | | | | |
|---|--------------------------|---------------|--|--------------------|--------|------------|----------|---------|-------|
|  | Weekly Production Report | | | Survey Specs | | | | | |
| | Project Number: | 17023_IsMins | | IP | | | | | |
| | Client: | IsMins | | Dipole Dipole | | | | | |
| | Project: | Compass Creek | | 100m dipole length | | | | | |
| | Project Manager: | JD Nicholas | | | | | | | |
| Monday, 31 July 2017 | | | | Line | Start | End | Stations | Rate | Hours |
| Acquisition on line 851200N. Not complete. | | | | 8512000 | 788400 | 789300 | 9 | Prod | 10 |
| | | | | | | | | | |
| | | | | | | | | Standby | |
| | | | | | | | | | |
| | | | | | | | | Mobe | |
| | | | | | | | | | |
| | | | | Total Stations | | | 9 | B-Down | |
| Tuesday, 1 August 2017 | | | | Line | Start | End | Stations | Rate | Hours |
| Complete Line 851200N Some connection issues. | | | | 8512000 | 789300 | 789800 | 5 | Prod | 10 |
| | | | | | | | | | |
| | | | | | | | | Standby | |
| | | | | | | | | | |
| | | | | | | | | Mobe | |
| | | | | | | | | | |
| | | | | Total Stations | | | 5 | B-Down | |
| Wednesday, 2 August 2017 | | | | Line | Start | End | Stations | Rate | Hours |
| Crew set up about half of line 12500N. Read 6 stations. | | | | 8512500 | 787800 | 788300 | 6 | Prod | 10 |
| | | | | | | | | | |
| | | | | | | | | Standby | |
| | | | | | | | | | |
| | | | | | | | | Mobe | |
| | | | | | | | | | |
| | | | | Total Stations | | | 6 | B-Down | |
| Thursday, 3 August 2017 | | | | Line | Start | End | Stations | Rate | Hours |
| Continued line 8512500N Connection issues. Swapped cables. Flat tyre on Corefleet Patrol. | | | | 8512500 | 788300 | 789000 | 7 | Prod | 7 |
| | | | | | | | | | |
| | | | | | | | | Standby | |
| | | | | | | | | | |
| | | | | | | | | Mobe | |
| | | | | | | | | | |
| | | | | Total Stations | | | 7 | B-Down | 3 |
| Friday, 4 August 2017 | | | | Line | Start | End | Stations | Rate | Hours |
| Completed line 8512500N | | | | 8512500 | 789000 | 790100 | 10 | Prod | 10 |
| | | | | | | | | | |
| | | | | | | | | Standby | |
| | | | | | | | | | |
| | | | | | | | | Mobe | |
| | | | | | | | | | |
| | | | | Total Stations | | | 10 | B-Down | |
| Saturday, 5 August 2017 | | | | Line | Start | End | Stations | Rate | Hours |
| Commence Line 851300N Sam goes tp town tpo repair tyres and buy supplies. Crew set up half of line 13000N | | | | 8513000 | | | | Prod | 10 |
| | | | | | | | | | |
| | | | | | | | | Standby | |
| | | | | | | | | | |
| | | | | | | | | Mobe | |
| | | | | | | | | | |
| | | | | Total Stations | | | 0 | B-Down | |
| Sunday, 6 August 2017 | | | | Line | Start | End | Stations | Rate | Hours |
| Crew continue line 851300N | | | | 8513000 | 788300 | 789400 | 12 | Prod | 10 |
| | | | | | | | | | |
| | | | | | | | | Standby | |
| | | | | | | | | | |
| | | | | | | | | Mobe | |
| | | | | | | | | | |
| | | | | Total Stations | | | 12 | B-Down | |
| Weekly Production Summary | | | | | | | | | |
| | | | | Stations Total | | 49.0 Prod | | 67.0 | |
| | | | | Production Days | | 6.7 Stanby | | 0.0 | |
| | | | | Stations Per Day | | 7.3 Mobe | | 0.0 | |
| | | | | | | B-Down | | 3.0 | |

| | | | | | | | | | |
|--|--------------------------|---------------|--|----------------------------------|--------------|------------|-----------------|-------------|--------------|
|  | Weekly Production Report | | | Survey Specs | | | | | |
| | Project Number: | 17023_IsMins | | IP | | | | | |
| | Client: | IsMins | | Dipole Dipole | | | | | |
| | Project: | Compass Creek | | 100m dipole length | | | | | |
| | Project Manager: | JD Nicholas | | | | | | | |
| Monday, 7 August 2017 | | | | Line | Start | End | Stations | Rate | Hours |
| Continued on line 851300N | | | | 8513000 | 789400 | 789700 | 3 | Prod | 10 |
| | | | | | | | | Standby | |
| | | | | | | | | Mobe | |
| | | | | | | | | | |
| | | | | Total Stations | | | 3 | B-Down | |
| | | | | Tuesday, 8 August 2017 | | | | Line | Start |
| Continued on line 851300N | | | | 8513000 | 789700 | 790500 | 8 | Prod | 10 |
| | | | | | | | | Standby | |
| | | | | | | | | Mobe | |
| | | | | | | | | | |
| | | | | Total Stations | | | 8 | B-Down | |
| | | | | Wednesday, 9 August 2017 | | | | Line | Start |
| Continued on line 851300N 3 crew on site Greg McAvoy mobed out to Alice Springs. Took thrifty to Darwin. | | | | 8513000 | 788400 | 788800 | 5 | Prod | 10 |
| | | | | | | | | Standby | |
| | | | | | | | | Mobe | |
| | | | | | | | | | |
| | | | | Total Stations | | | 5 | B-Down | |
| | | | | Thursday, 10 August 2017 | | | | Line | Start |
| Commenced line 8513500N. 3 crew on site. Simon on site at 2:30pm | | | | 8513500 | 788300 | 788600 | 4 | Prod | 10 |
| | | | | | | | | Standby | |
| | | | | | | | | Mobe | |
| | | | | | | | | | |
| | | | | Total Stations | | | 4 | B-Down | |
| | | | | Friday, 11 August 2017 | | | | Line | Start |
| Continue line 8513500N | | | | 8513500 | 788600 | 789200 | 6 | Prod | 10 |
| | | | | | | | | Standby | |
| | | | | | | | | Mobe | |
| | | | | | | | | | |
| | | | | Total Stations | | | 6 | B-Down | |
| | | | | Saturday, 12 August 2017 | | | | Line | Start |
| Completed line 8513500N. | | | | 8513500 | 789200 | 790300 | 11 | Prod | 10 |
| | | | | | | | | Standby | |
| | | | | | | | | Mobe | |
| | | | | | | | | | |
| | | | | Total Stations | | | 11 | B-Down | |
| | | | | Sunday, 13 August 2017 | | | | Line | Start |
| Packed up line 13500N. Set up most of line 14000N | | | | | | | 0 | Prod | 10 |
| | | | | | | | | Standby | |
| | | | | | | | | Mobe | |
| | | | | | | | | | |
| | | | | Total Stations | | | 0 | B-Down | |
| | | | | Weekly Production Summary | | | | | |
| | | | | Stations Total | 37.0 | Prod | 70.0 | | |
| | | | | Production Days | 7.0 | Stanby | 0.0 | | |
| | | | | Stations Per Day | 5.3 | Mobe | 0.0 | | |
| | | | | | | B-Down | 0.0 | | |

|  | Weekly Production Report | | | Survey Specs | | | | | |
|---|--------------------------|---------------|--|----------------------------------|--------|-------------|----------|----------------|-------|
| | Project Number: | 17023_IsMins | | IP | | | | | |
| | Client: | IsMins | | Dipole Dipole | | | | | |
| | Project: | Compass Creek | | 100m dipole length | | | | | |
| | Project Manager: | JD Nicholas | | | | | | | |
| Monday, 14 August 2017 | | | | Line | Start | End | Stations | Rate | Hours |
| Commenced reading on line 8514000N. | | | | 8514000 | 788050 | 788850 | 9 | Prod | 10 |
| | | | | | | | | Standby | |
| | | | | | | | | Mobe | |
| | | | | | | | | | |
| | | | | Total Stations | | | 9 | B-Down | |
| | | | | Tuesday, 15 August 2017 | | | | Line | Start |
| Read until 10am. Sam and Tyler leave for Sam's demobe. Simon and JD prep line further and pack up some gear. Spent afternoon fixing cables. | | | | 8514000 | 788850 | 789150 | 3 | Prod | 3 |
| | | | | | | | | Standby | |
| | | | | | | | | Mobe | |
| | | | | | | | | | |
| | | | | Total Stations | | | 3 | B-Down | 7 |
| | | | | Wednesday, 16 August 2017 | | | | Line | Start |
| Tyler and Justin arrive on site at 11am. Finish reading line 14000N | | | | 8514000 | 789150 | 790350 | 12 | Prod | 5 |
| | | | | | | | | Standby | |
| | | | | | | | | Mobe | |
| | | | | | | | | | |
| | | | | Total Stations | | | 12 | B-Down | 5 |
| | | | | Thursday, 17 August 2017 | | | | Line | Start |
| 2 man crew packing up line. 2 others tow hilux to pick up point to get it towed into Darwin 3 man crew from 2-5pm in field. | | | | | | | | Prod | 8 |
| | | | | | | | | Standby | |
| | | | | | | | | Mobe | |
| | | | | | | | | | |
| | | | | Total Stations | | | 0 | B-Down | 2 |
| | | | | Friday, 18 August 2017 | | | | Line | Start |
| Set up tx on line 8515650N. | | | | | | | | Prod | 10 |
| | | | | | | | | Standby | |
| | | | | | | | | Mobe | |
| | | | | | | | | | |
| | | | | Total Stations | | | 0 | B-Down | |
| | | | | Saturday, 19 August 2017 | | | | Line | Start |
| Set up rx on line 8515650N. | | | | | | | | Prod | 10 |
| | | | | | | | | Standby | |
| | | | | | | | | Mobe | |
| | | | | | | | | | |
| | | | | Total Stations | | | 0 | B-Down | |
| | | | | Sunday, 20 August 2017 | | | | Line | Start |
| Cart water onto line. Commence reading. | | | | 8515650 | 788500 | 788700 | 3 | Prod | 10 |
| | | | | | | | | Standby | |
| | | | | | | | | Mobe | |
| | | | | | | | | | |
| | | | | Total Stations | | | 3 | B-Down | |
| | | | | Weekly Production Summary | | | | Stations Total | |
| | | | | Production Days | | 5.6 Standby | 0.0 | | |
| | | | | Stations Per Day | | 4.8 Mobe | 0.0 | | |
| | | | | | | B-Down | 14.0 | | |

| | | | | | | | | | |
|---|--------------------------|---------------|--|--------------------|--------|------------|----------|---------|-------|
|  | Weekly Production Report | | | Survey Specs | | | | | |
| | Project Number: | 17023_IsMins | | IP | | | | | |
| | Client: | IsMins | | Dipole Dipole | | | | | |
| | Project: | Compass Creek | | 100m dipole length | | | | | |
| | Project Manager: | JD Nicholas | | | | | | | |
| Monday, 21 August 2017 | | | | Line | Start | End | Stations | Rate | Hours |
| Continue reading line 8515650N | | | | 8515650 | 788700 | 789500 | 8 | Prod | 10 |
| | | | | | | | | Standby | |
| | | | | | | | | Mobe | |
| | | | | | | | | | |
| | | | | Total Stations | | | 8 | B-Down | |
| Tuesday, 22 August 2017 | | | | Line | Start | End | Stations | Rate | Hours |
| Completed line 8515650N | | | | 8515650 | 789500 | 799300 | 8 | Prod | 10 |
| | | | | | | | | Standby | |
| | | | | | | | | Mobe | |
| | | | | | | | | | |
| | | | | Total Stations | | | 8 | B-Down | |
| Wednesday, 23 August 2017 | | | | Line | Start | End | Stations | Rate | Hours |
| Crew Pack up line and demobe from camp to Darwin. Justin and Tyler on 12am flight home. | | | | | | | | Prod | |
| | | | | | | | | Standby | |
| | | | | | | | | Mobe | 10 |
| | | | | | | | | | |
| | | | | Total Stations | | | 0 | B-Down | |
| Thursday, 24 August 2017 | | | | Line | Start | End | Stations | Rate | Hours |
| Simon and JD standby in Darwin Tyler and Justin still demobing most of the day | | | | | | | | Prod | |
| | | | | | | | | Standby | 8 |
| | | | | | | | | Mobe | |
| | | | | | | | | | |
| | | | | Total Stations | | | 0 | B-Down | |
| Friday, 25 August 2017 | | | | Line | Start | End | Stations | Rate | Hours |
| Simon and JD standby in Darwin | | | | | | | | Prod | |
| | | | | | | | | Standby | 8 |
| | | | | | | | | Mobe | |
| | | | | | | | | | |
| | | | | Total Stations | | | 0 | B-Down | |
| Saturday, 26 August 2017 | | | | Line | Start | End | Stations | Rate | Hours |
| Simon and JD demobe from Darwin to Mt Isa. Spend night in Cape Crawford (Heartbreak Hotel) | | | | | | | | Prod | |
| | | | | | | | | Standby | |
| | | | | | | | | Mobe | 8 |
| | | | | | | | | | |
| | | | | Total Stations | | | 0 | B-Down | |
| Sunday, 27 August 2017 | | | | Line | Start | End | Stations | Rate | Hours |
| Simon and JD demobe Cape Crawford to Mt Isa. | | | | | | | | Prod | |
| | | | | | | | | Standby | |
| | | | | | | | | Mobe | 8 |
| | | | | | | | | | |
| | | | | Total Stations | | | 0 | B-Down | |
| Weekly Production Summary | | | | Stations Total | | 16.0 Prod | | 20.0 | |
| | | | | Production Days | | 2.0 Stanby | | 16.0 | |
| | | | | Stations Per Day | | 8.0 Mobe | | 26.0 | |
| | | | | | | B-Down | | 0.0 | |

| | | | | | | | | | |
|---|--------------------------|---------------|--|--------------------|-------|---------|----------|---------|-------|
|  | Weekly Production Report | | | Survey Specs | | | | | |
| | Project Number: | 17023_IsMins | | IP | | | | | |
| | Client: | IsMins | | Dipole Dipole | | | | | |
| | Project: | Compass Creek | | 100m dipole length | | | | | |
| | Project Manager: | JD Nicholas | | | | | | | |
| Monday, 28 August 2017 | | | | Line | Start | End | Stations | Rate | Hours |
| Simon demobe flight from Mt Isa to Sydney. Steve Kelly move into Mt Isa from Sydney. JD and Steve attend Mt Isa Mines vehicle and electrical inspection | | | | | | | | Prod | |
| | | | | | | | | | |
| | | | | | | | | Standby | |
| | | | | | | | | | |
| | | | | | | | | Mobe | 8 |
| | | | | | | | | | |
| | | | | Total Stations | | | | B-Down | |
| Tuesday, 29 August 2017 | | | | Line | Start | End | Stations | Rate | Hours |
| JD Demobe from Mt Isa to Sydney | | | | | | | | Prod | |
| | | | | | | | | | |
| | | | | | | | | Standby | |
| | | | | | | | | | |
| | | | | | | | | Mobe | 8 |
| | | | | | | | | | |
| | | | | Total Stations | | | | B-Down | |
| Wednesday, 30 August 2017 | | | | Line | Start | End | Stations | Rate | Hours |
| | | | | | | | | Prod | |
| | | | | | | | | | |
| | | | | | | | | Standby | |
| | | | | | | | | | |
| | | | | | | | | Mobe | |
| | | | | | | | | | |
| | | | | Total Stations | | | 0 | B-Down | |
| Thursday, 31 August 2017 | | | | Line | Start | End | Stations | Rate | Hours |
| | | | | | | | | Prod | |
| | | | | | | | | | |
| | | | | | | | | Standby | |
| | | | | | | | | | |
| | | | | | | | | Mobe | |
| | | | | | | | | | |
| | | | | Total Stations | | | 0 | B-Down | |
| Friday, 1 September 2017 | | | | Line | Start | End | Stations | Rate | Hours |
| | | | | | | | | Prod | |
| | | | | | | | | | |
| | | | | | | | | Standby | |
| | | | | | | | | | |
| | | | | | | | | Mobe | |
| | | | | | | | | | |
| | | | | Total Stations | | | 0 | B-Down | |
| Saturday, 2 September 2017 | | | | Line | Start | End | Stations | Rate | Hours |
| | | | | | | | | Prod | |
| | | | | | | | | | |
| | | | | | | | | Standby | |
| | | | | | | | | | |
| | | | | | | | | Mobe | |
| | | | | | | | | | |
| | | | | Total Stations | | | 0 | B-Down | |
| Sunday, 3 September 2017 | | | | Line | Start | End | Stations | Rate | Hours |
| | | | | | | | | Prod | |
| | | | | | | | | | |
| | | | | | | | | Standby | |
| | | | | | | | | | |
| | | | | | | | | Mobe | |
| | | | | | | | | | |
| | | | | Total Stations | | | 0 | B-Down | |
| Weekly Production Summary | | | | | | | | | |
| | | | | Stations Total | | 0.0 | Prod | 0.0 | |
| | | | | Production Days | | 0.0 | Stanby | 0.0 | |
| | | | | Stations Per Day | | #DIV/0! | Mobe | 16.0 | |
| | | | | | | | B-Down | 0.0 | |