



**AMI Resources Pty Ltd**

A.C.N. 140 405 992

Ph: +61 3 9807 9972

Fax: +61 3 96542031

**AMI Resources Pty Ltd**  
**Annual Report**  
on  
**Mineral Tenement EL27942**  
**Alice Springs Region**

25/10/2016 to 24/10/2017

**AMI Resources Pty Ltd**  
**Level 7, 3 Bowen Crescent**  
**Melbourne, Vic 3000**  
**Email: haishun\_sun198@hotmail.com**

© 2016 by AMI Resources Pty Ltd. All rights reserved. No part of this document may be reproduced or transmitted in any form or by any means, electronic, mechanical, photocopying, recording, or otherwise, without prior written permission of AMI Resources Pty Ltd. However, the Minister of NT Department of Resources is authorized to publish the information contained in this report in line with Guideline 7 (Section 12.3).

# Table of Contents

<b>1.</b>	<b>Management Report: Year 7</b>	<b>3</b>
<b>2.</b>	<b>Geological Settings: EL 27942 --Copper</b>	<b>4</b>
	2.1. Regional and Local Geology	5
	2.2. Mineral Occurrences	7
<b>3.</b>	<b>Geochemical Report</b>	<b>8</b>
	3.1. Rock-chips and Soil Sampling Conducted	11
	3.2. Location of Samples & Results Discussion	12
<b>4.</b>	<b>Follow-up Exploration Work</b>	<b>12</b>
	<b>Appendix 1: Rock Samples collected: Coordinates &amp; Descriptions</b>	<b>13</b>
	<b>Appendix 2: Geochemical Analysis Results: Rock Samples</b>	<b>14</b>
	<b>Appendix 2: Geochemical Analysis Results: Soil Samples:</b>	<b>16</b>
	<b>Figures</b>	
<b>1.</b>	<b>Pre-Mesozoic Basement Geology (Dulcie Range)</b>	<b>6</b>
<b>2.</b>	<b>Published 1:250,000 Geology and mineral occurrences (Dulcie Range)</b>	<b>7</b>
<b>3.</b>	<b>Dulcie Range Project, EL 27942: Sample Locations</b>	<b>10</b>
<b>4-6</b>	<b>Figures for mineralised veins and rock sites</b>	<b>11</b>

# 1. Management Report: Year 7

This is AMI Resources Pty Ltd (AMI)'s annual report on EL27942 for year 2016-17, outlines work progress in geological exploration in the mineral tenement area covered by the license in year seven and provides geological report based on fieldwork and geochemical analysis results. This report then will propose work programs in exploration for the next year.

AMI has made a substantial progress in conducting geological survey, research and fieldwork prospecting. In particular, we have done further sampling in the targeted areas for geochemical analysis, including both rock-chips and soil samples. The geochemical assay results have helped us in target generation and have prepared AMI for significant geological exploration in the forthcoming years.

The major progresses made in 2016-17 year are listed below:

- Data search and analysis, literature review, interpretation of existing data and reports from various sources.
- Conducted on-site prospecting, reconnaissance and sample collections and assessments. Carried out geochemical exploration for rocks and soil samples (12 bags of rock-chips and 98 bags of soil), with assays results being prospective. We also built up strategic partnership and joint work projects with a Chinese company, in both geological exploration and investment programs.

## 2. Geological Settings: EL 27942- the Dulcie-Jervois Copper Project

By Ross Caughey<sup>1</sup>

AMI's tenement EL 27942 is 52 km<sup>2</sup>, located in the north of the Plenty Highway, approximately 235 km northeast of Alice Springs. It is within the greater Jervois Mineral Field, but is about 35 km west of the previous Jervois mining area. Most known metalliferous deposits in the area are dominated by copper and tungsten, but they include a range of other base metals and other mineralisation.

### 2.1. Regional and Local Geology

The published 1:250,000 *Huckitta* geological mapsheet covers the Project area. The Huckitta region includes rocks from the mid Proterozoic metamorphic/igneous Arunta Inlier

---

<sup>1</sup> Exploration and Discovery, ACN 074 693 637), Suite 2, 337A Lennox Street, Richmond South, Victoria, 3121 Australia. Phone: +61 3 8420 6200, Email: [postman@flagstaff-geoconsultants.com](mailto:postman@flagstaff-geoconsultants.com).

and the younger overlying sedimentary sequences of the late Proterozoic to Devonian Georgina Basin. Thin Cainozoic cover (alluvium, colluvium) also covers parts of the area. The tenement area is dissected by three major faults, the ENE-trending Oomoolmilla Fault, and the NNW-trending Picton and Charlotte Faults. The pre-Mesozoic regional geology of the tenement area showing the main structural blocks and fault zones is shown on *Figure 2*. The 1:250,000 scale geology of the project area is shown on *Figure 2*. (Ref. Freeman, 1986, NTGS Huckitta Explanatory Notes<sup>1</sup>).

In the southeastern part of the Dulcie Range tenement area, the geology is dominated by the Proterozoic Jinka Granite of the Jinka Block. This older granite is mid Proterozoic in age, around 1700–1800 Ma, and comprises biotite granite that is locally porphyritic and includes minor foliated granodiorite facies. Other mid Proterozoic granites in the region (Jervis Granite and Mt Swan Granite) have been recently dated at around 1771 to 1713 Ma.

To the east of the Jinka Granite, on the edge of the tenement and east of the Charlotte Fault are areas of older Proterozoic basement rocks of the Bonya Block. This area is dominated by the Bonya Schist, a unit comprising muscovite-biotite schist with minor andalusite, sillimanite and garnet, metapelite, felsic metavolcanics, amphibolite, skarn rocks and rare migmatite. *Figure 1* is a Landsat image enhanced to distinguish different rock types.

To the southwest and north of the Jinka Block lies a sequence of Neo-Proterozoic to Devonian sedimentary rocks of the Georgina Basin. To the southwest of the Jinka Granite are areas of Mounga and Keepera Groups (siltstone, sandstone, dolostone, shale, conglomerate), and then various Cambrian sequences (arenite, dolostone, calcareous siltstone, limestone, conglomerate). To the north of the Jinka Granite, on the north side of the Oomoolmilla Fault, is a large syncline comprising Cambrian to Devonian rocks, including the Devonian Dulcie Sandstone (largely quartz arenite) of the upper Georgina Basin sequence (see *Figure 2*).

Within the tenement area there are three major faults, the ENE-trending Oomoolmilla Fault, and the NNW-trending Picton and Charlotte Faults (*Figure 2*). These major faults juxtapose blocks of different ages and have probably been re-activated during several geological time periods. The area of intersection of these major structures is covered by the eastern part of AMI's Licence. This faulting appears to have controlled sedimentation of the Georgina Basin sequence to the north, into fault-bounded basins. Broad folding is present in the Georgina Basin sequence, for example at Dulcie Range in the northern part of the EL, a large syncline occurs. The older Proterozoic basement rocks of the Arunta Inlier are strongly foliated and faulted in places.

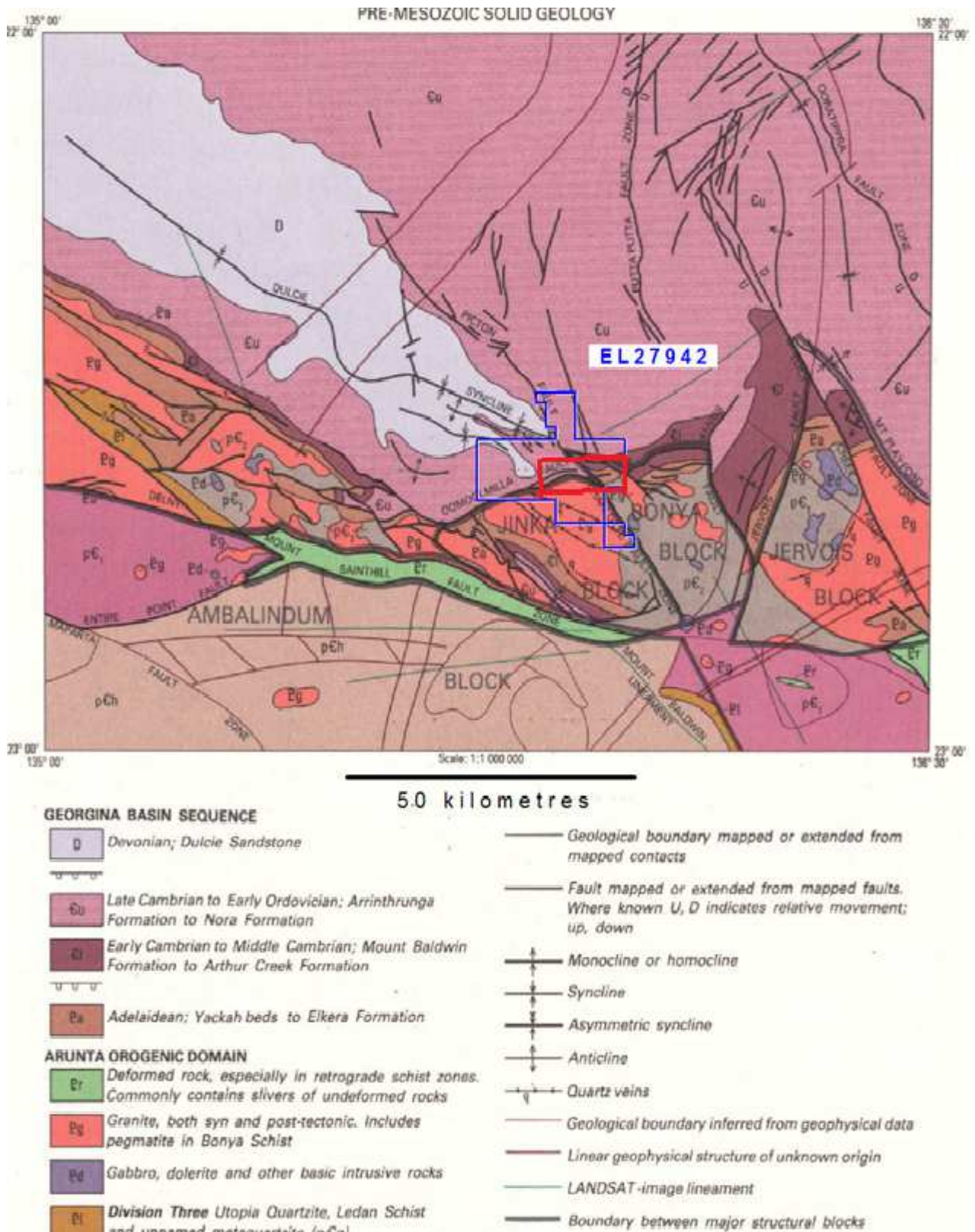


Figure 1: Published 1:1,000,000 pre-Mesozoic basement geology (from the Huckitta 1:250,000 mapsheet, 1986). AMI's EL 27942 is shown in blue. Note the cross-cutting and intersecting fault zones.



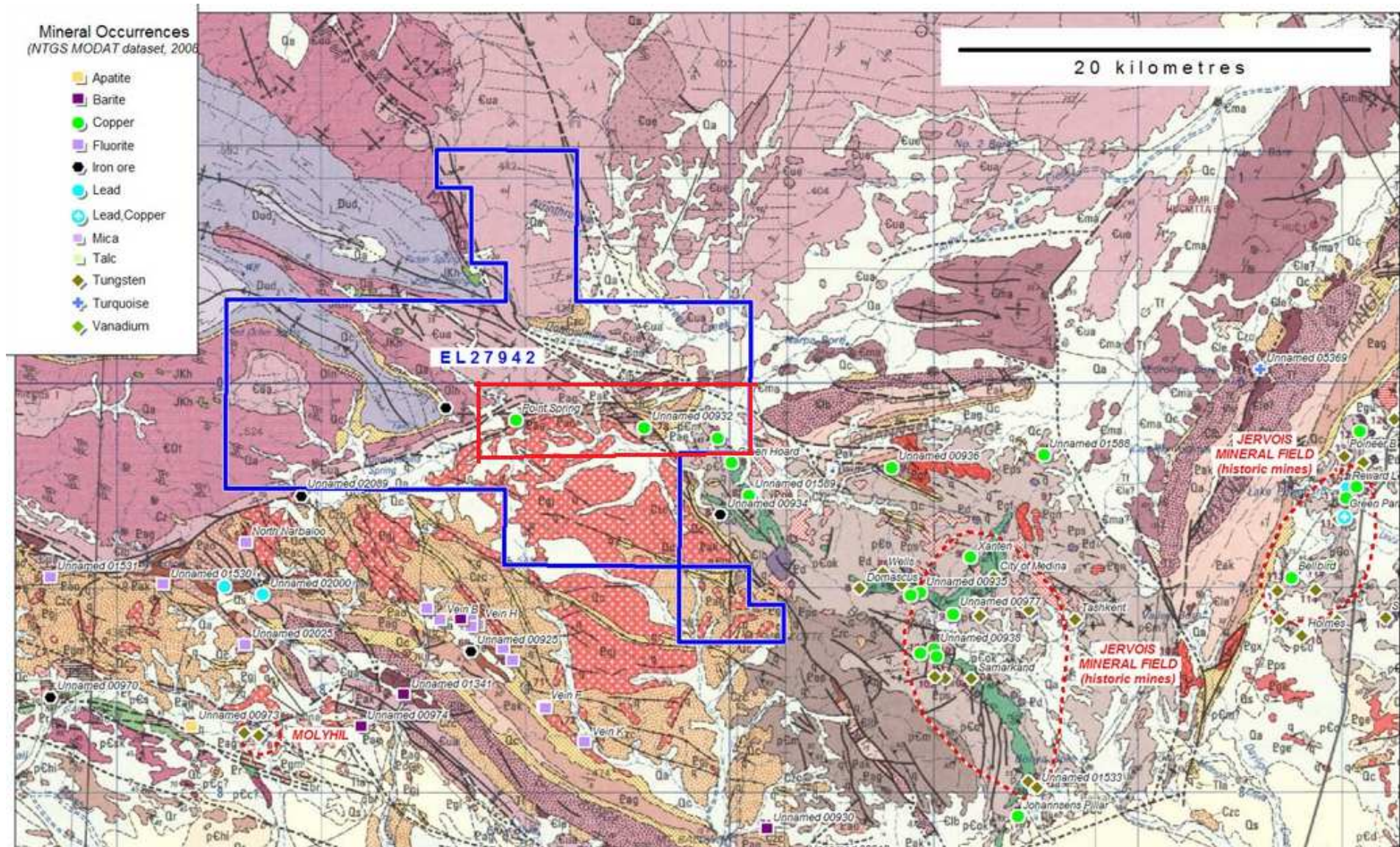


Figure 2: Published 1:250,000 geology (Huckitta mapsheet, 1986), with colour-coded mineral occurrences (NTGS MODAT dataset). The area in blue lines is the original area of EL27942. After partial reduction, the retained area is shown in the red line..

## 2.2. Mineral Occurrences

The mineral occurrences shown in *Figure 2* are all part of the Jervois Mineral Field, but the principal “Jervois” copper deposits mined in the past are about 35 km to the east. Freeman, 1986<sup>1</sup>, quoted an inferred resource of 3.66 Mt @ 2.8% Cu and 60 ppm Ag, including 0.9 Mt @ 9.0% Pb and 3.0% Zn for the central Jervois Cu-Pb-Zn-Ag deposits, but more recent estimates are of the order of 6.1 Mt @ 2.1% Cu<sup>2</sup>.

The deposits are hosted in the Bonya Schist unit, in the noses of isoclinal folds. The deposits are associated with magnetite-bearing schists that grade into magnetite-quartzites (banded iron formation (“BIF”), or similar). For the copper deposits, some workers suggest a structurally-controlled (but stratiform) copper origin. The Pb-Zn mineralisation is hosted in calc-silicates and some workers have also suggested a skarn origin. More recent publications suggest Jervois has some IOCG affinities, due to the high magnetite content. The Jervois mining field is located on a gravity and magnetic (high) anomaly.

To the south of EL 27942 is the Molyhil scheelite-molybdenite-magnetite-chalcopyrite deposit (*Figure 3*), which was discovered in 1971. The Molyhil deposits are hosted in calc-silicates and are classified as skarns, occurring in the roof of a leucogranite (probably part of the Jinka Suite<sup>3</sup>). Freeman, 1986<sup>1</sup>, quoted reserves of 1.8 Mt @ 0.6% WO<sub>3</sub>, 0.3% MoS<sub>2</sub> at Molyhil, but more recent estimates are of the order of 3.7 Mt @ 0.51% combined W & Mo<sup>2</sup>.

Within EL 27942, several small mineral occurrences are located along the edge of the Jinka Granite, along the Oomoolmilla and Charlotte Faults (e.g. *Point Spring Copper*). These mineral occurrences are reported as being small in size, and are mainly composed of shallow secondary copper with some iron occurrences and rare barite. Many of these are unnamed occurrences with limited information. The only named occurrence is the *Point Spring Copper* occurrence, described briefly in the NTGS Modat database as an irregular small copper occurrence within the Jinka Block, classified as “low-temperature stratabound” mineralisation. The *Point Spring Iron* occurrence occurs to the west of the copper occurrence, and lies within oolitic ironstones of the Georgina Basin.

In the tenement area and further south, the Jinka Granite is cut by numerous small brecciated and recemented hydrothermal quartz-fluorite-barite±galena veins with low levels of metals (e.g. Au-Mo-Cu-Pb-As). These are referred to as the Oorabra Reefs<sup>3</sup>.



The Geoscience Australia ‘Arunta Inlier Synthesis’ (Budd, 2001<sup>3</sup>) notes that the Jinka Granite suite “shows many of the criteria considered important in the formation of granite-associated ore deposits”; “the granite . . . is a high-fluorine granite, which is considered to decrease a granite’s mineralising potential for gold and base metals, but is important in concentrating such elements as Mo and W. Many fluorite and scheelite occurrences are found associated with this granite and with pegmatites and veins which cut it, and the granite with its associated country rock are considered to have high potential for further such deposits”; “The Molyhil mine is probably associated with this granite, as are scheelite deposits of the Bonya Ore District.”

The faulted or sheared margins of the Jinka Granite in EL 27942 are largely obscured by younger Quaternary sediments (alluvium, colluvium). It is in or near this area of deformation, however, that the few known mineral occurrences (such as *Point Spring Copper*) in the licence occur. There may be significant potential for buried mineralisation along this zone of structural complexity, which juxtaposes a variety of rock types of different ages. In the east of the licence, in particular, several intersecting major faults produce a complex structural mix of early-mid- Proterozoic Jinka Granite, Bonya Schist and amphibolite, late Proterozoic Adelaidean rocks and Cambrian Georgina Basin rocks.

There may also be uranium potential in the area. A preliminary review of available radiometric data indicates some localised uranium/thorium ratio anomalies in and near the licence, possibly associated with stratigraphic contacts in the Georgina Basin sedimentary rocks.

### **3. Geochemical Report**

This Report is a review and discussion of geochemical assay results obtained from the Jervois-Dulcie Range project, exploration licence 27942, held by AMI Resources Pty Ltd, in the 2017 reporting year.

#### **3.1. Sampling Conducted.**

Based on previous geochemical analysis results, we conducted further samplings and prospecting on the three areas of copper occurrences—unnamed site 932, unnamed site 933 and Point of Springs copper sites. Our field prospecting and sampling were conducted in December 2017, focusing on three copper prospective areas:

Point Springs  
unnamed site 932  
unnamed site 933



The geologist team has done on-site prospecting using trenching and profile survey, conducting rock-chips and soil sample collections on the targeted area, especially on the three copper-prospective areas. The team has collected 12 rock samples and 98 bags of soil samples in the areas of Point Springs, unnamed site 932 and unnamed site 933.

Sample descriptions and assay results are provided in Appendices 1 and 2. Sample locations are shown in Figure 3.

### 3.2. Location and descriptions of Samples

The description of the sample sites and location and the coordinates of samples are provided in Appendix 1. The samples in each location are listed in following tables.

#### Unnamed copper occurrence 933.

Location	Samples	Number of samples
To the north:- the main copper mineralisation (though 250-500m from the mapped site)	JH1, JH2, JH3	3

#### Unnamed copper occurrence 932.

Location	Samples	Number of samples
To the north:- close to the <i>MODAT</i> site about 120m southeast about 240 m further southeast	JH4, JH5, JH6	3

This site is about 5 km east of the *Point Spring* copper occurrence. The northern three samples were within 100-250 m of the site in the *MODAT* database, but the site in the original published 'Huckitta' mapsheet is 350 to 560 m north and east of all the samples. AMI's sampling did return copper mineralization, as presented in the assay results.

#### Point Spring copper occurrence.

Location	Samples	Number of samples
About 25-30 m west of the channel-sampled main mineralization. And two sets of "channel sampling", south-north over 30 m, across mineralised zone	JH7, JH8, JH9 JH10, JH11 and JH12	6

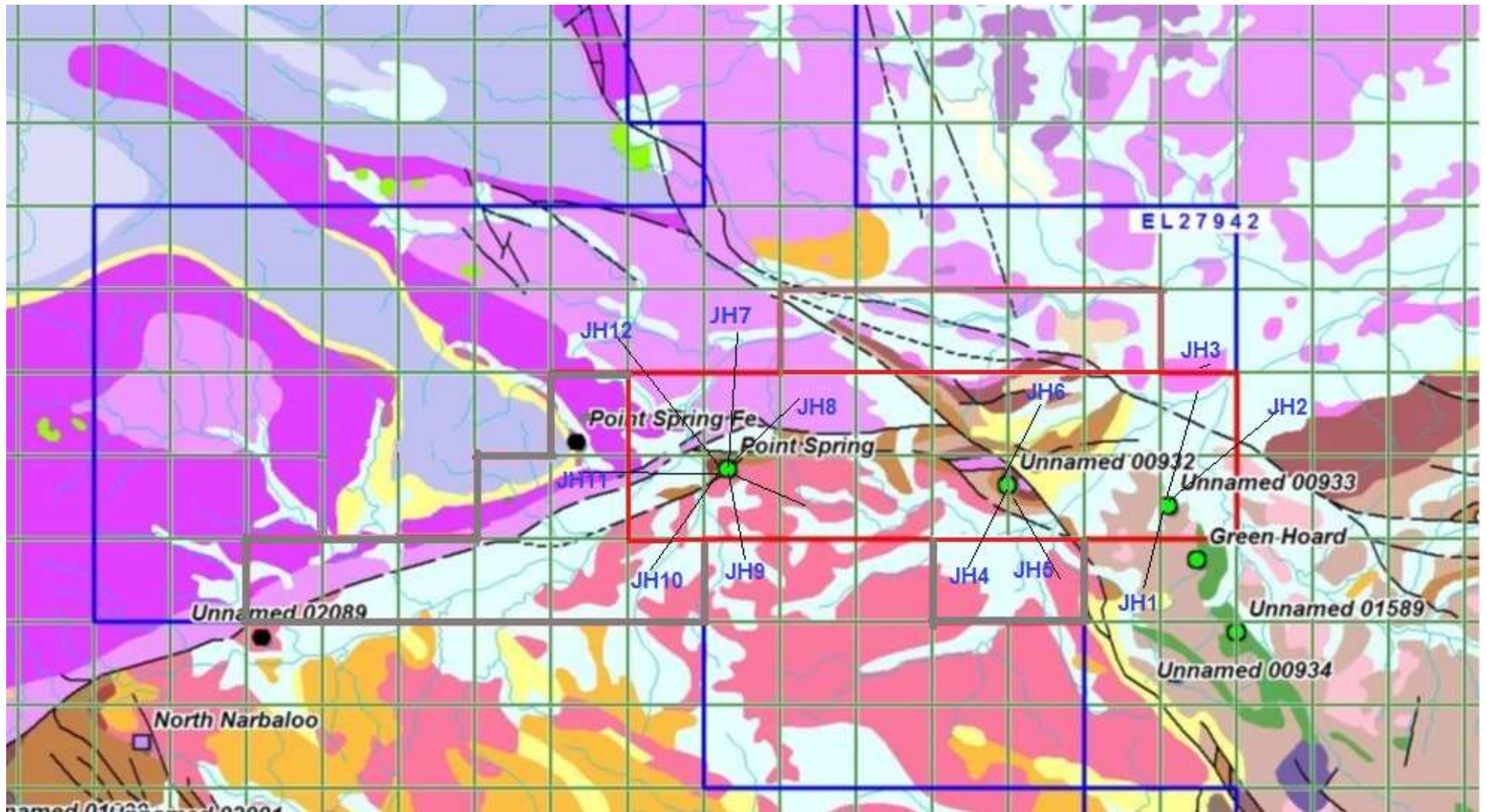


Figure 3: Dulcie Range Project, EL 27942: Sample Locations in April 2016 field work.



In addition, our geologist team have collected 98 bags of soil samples along the designed prospecting lines to examine the mineralisation of in the areas of Point Springs, unnamed site 932 and unnamed site 933. The geochemical results are presented in Appendix 3. No coordinates taken for Soil samples.

Soil samples were collected 50 meters from the three copper occurrences in EL27942 - Point of Springs copper occurrence, Point 932 and Point 933, with 20 meters distance between each soil sample.

This aims to test for the extension (or strikes) of mineralised copper veins in the area.



Fig 4: Copper Mineralized Vein in Point of Springs (Ore Body 1)



Fig 5. Copper-bearing Granitic Mass Exposed out of Earth Surface of Ore Body 2 (Copper Occurrence 932).



Fig 5. Disseminated-shape Copper Mineralization in Ore Body 3 (Copper Occurrence 933)



Fig 6. Veinlet-shape Copper Mineralization in Ore Body 3 Copper Occurrence 933

### 3.3. Summary Discussion.

The detailed geochemical analysis results are presented in Appendix 2 and Appendix 3.

The principal prospectivity of the project appears to be the three known copper occurrences, and surrounding areas. *Point Spring* and the unnamed occurrence 932 are about 6 km apart and in or proximal to the Oomoolmilla and Charlotte Fault systems, and it is likely that the fault deformation has had some influence on the copper mineralisation. The fault zones in between these two, and adjacent areas, and along trend to the west of *Point Spring* and south of occurrence 932 are prospective.

The unnamed copper occurrence 933, further east, is different in being hosted by the Bonya Schist basement, and is more similar to the Jervis Mineral Field copper deposits to the east and southeast. Prospectivity around this occurrence is more likely to be to the south-southeast, towards the Green Hoard occurrence, just outside AMI's licence, and to the east, where the *Kings Legend Amphibolite Member* probably lies under cover, and to the north, where any continuity of this mineralisation, and the *Amphibolite Member*, may extend under alluvial cover about 1 to 1.5 km further before terminating the eastern extent of faulting from the Oomoolmilla Fault system.

Based on our geologist team's fieldwork and mapping and trenching projects, it has been found that the three copper occurrence sites ---Point of Springs, unnamed site 932 and unnamed site 933 are possibly connected in structure and are likely form a large copper mineralized vein extending for 11 km in its length, with an average width of 80 meters. The geochemical analysis of rock-chips from trenching works, and soil samples provided a firm indication of copper mineralization, at grade of 1.86% on average. Ore weight is 2.74g/cm<sup>3</sup>. The slant depth is 50m; ore-bearing rate is calculated at 30%. Based on our preliminary calculation, prospective copper ore amount is 120560 thousand tons; the metal content could be estimated at 672,700 tons.

### 4. Future Work.

The work done has indicated potential for quite thick copper mineralisation in granite at the *Point Spring* and occurrence 932 sites, and scattered copper (and tungsten) mineralisation has been found at the occurrence 933 site. All three areas warrant follow-up work.

At all the areas, the principal work required, in the near-term, is

- detailed geological mapping, to identify the nature and extent of the mineralised rocks,



and any structural or stratigraphic controls, and whether mineralisation terminates or may extend further under cover

- more, and more systematic, and repeat, sampling, to confirm mineralisation (e.g. in the significant channel sample intervals at *Point Spring*), and to try to identify the limits of mineralisation (e.g. where the actual margins of the copper mineralisation are at Point Spring and occurrence 932), and to better define the extents and continuity of mineralisation (e.g. what east-west extent the *Point Spring* mineralisation might have, and what dimensions and strike extent the mineralisation at occurrence 933 may have).

Additional work which could be considered in the near-term might be ground conductivity surveying, which might aid in defining extents of deeper sulphide mineralisation.

Additional prospectivity, of possible interest, may lie within about 1 to 1.5 km to the north of the unnamed occurrence 933, in the east. In this area, any continuity of this mineralisation, and the *Kings Legend Amphibolite Member* (which carries disseminated pyrite and chalcopyrite, and may be related to the nearby copper mineralisation) is probably terminated to the north by the eastern extent of faulting from the Oomoolmilla Fault system, all under alluvial cover.

The Bonya-Schist-hosted mineralisation predates the Fault system, but the other two copper occurrences (*Point Springs* and 932) suggest that the faulting has played some role in remobilising and redepositing copper. This faulted area north of occurrence 933, therefore, may be significantly prospective. It may be one of the few or only areas where “Jervois-type” mineralisation is cut by such a major fault system, and it may have potential for significant remobilisation and deposition of mineralisation. It is entirely under alluvial cover, however, and there appears to be no indication of prior geochemical sampling or other exploration. Systematic soil sampling here may indicate geochemical anomalism, or (if considered warranted) detailed geophysical surveying may help to delineate the subsurface stratigraphy and structure.

Subsequent follow-up work might include:

- Detailed low-level air-borne (or ground) geophysical surveying, to better define geological structures which might host or control mineralisation, so measure the size of area with mineralisation anomalism
- Targeted costeaning
- Drill testing.

Ross Caughey, *B.Sc.(Hons)*  
Geological Consultant

*(Exploration & Discovery Services Pty Ltd)*  
Flagstaff GeoConsultants Pty. Ltd.

*Member:*  
*Australasian Institute of GeoScientists (AIG),*  
*Geological Society of Australia (GSA),*  
*Society of Economic Geologists (SEG)*

**APPENDIX 1: Jervois- Dulcie Range Project EL 27942: Samples Descriptions (2017): (All coordinates are in GDA94, MGA zone 53). (Collected in December 2016)**

Sample ID No.	Coordinates		lithology	Location
	North	East		
JH1	599101	7497580	Malachite mineralised altered rock	Copper site 933
JH2	599151	7497632	Malachite mineralised altered rock	Copper site 933
JH3	599213	7497356	Malachite mineralised altered rock	Copper site 933
JH4	595865	7497868	Malachite mineralised altered rock	Copper site 932
JH5	596213	7497901	Malachite mineralised altered rock	Copper site 932
JH6	595693	7497916	Limonitisation on altered rocks	Copper site 932
JH7	590213	7498325	Malachite mineralised altered rock	Point Spring copper site
JH8	590218	7498337	Malachite mineralised altered rock	Point Spring copper site
JH9	590212	7498345	Malachite mineralised altered rock	Point Spring copper site
JH10	590225	7498352	Malachite mineralised altered rock	Point Spring copper site
JH11	590228	7498361	Malachite mineralised altered rock	Point Spring copper site
JH12	590226	7498370	Malachite mineralised altered rock	Point Spring copper site

**APPENDIX 2: Dulcie Range Project, EL 27942:: Geochemical Analysis Results for Rock-chip Samples collected in 2017**

SAMPLE	Sample	Au-AA26	ME-ICP61	ME-ICP61	ME-ICP61	ME-ICP61	ME-ICP61	ME-ICP61	ME-ICP61
SAMPLE DESCRIPTION	Pass75um	Au	Ag	Cu	Mn	Mo	Pb	Zn	Cu
	%		ppm	ppm	ppm	ppm	ppm	ppm	%
JH1		0.03		>10000		7	9	98	1.55
JH2		0.06		>10000		247	19	149	
JH3		0.01		>10000		3	175	97	2.04
JH4		0.02		>10000		1	47	55	2.76
JH5	98	0.01		>10000		2	37	39	1.18
JH6		<0.01		5830		2	10	13	
JH7		<0.01		>10000		1	21	18	1.025
JH8		<0.01		4290		<1	4	7	
JH9		<0.01		5200		<1	7	9	
JH10		<0.01		>10000		1	6	9	1.165
JH11		<0.01		>10000		4	6	7	1.715
JH12		0.01	<0.5	8520	275	15	26	32	
JH1		0.03		>10000		7	9	98	1.55
JH2		0.06		>10000		247	19	149	

**Appendix 3: APPENDIX 2: Dulcie Range Project, EL 27942:: Geochemical Analysis**  
**Results for Soil Samples collected in December 2016 (No of sample =98)**

	Au-AA 26	ME-ICP 61	ME-ICP 61	ME-ICP 61	ME-ICP 61	ME-ICP 61	ME-ICP 61	ME-ICP 61	ME-ICP 61	ME-ICP 61
Sample ID	Au	Ag	As	Bi	Cu	Mo	Pb	Sb	Sn	Th
	ppm	ppm	ppm	ppm	ppm	ppm	ppm	ppm	ppm	ppm
1-1	<0.01	<0.5	<5	<2	16	1	14	<5	<10	50
1-2	<0.01	<0.5	7	<2	17	3	13	<5	<10	50
1-3	<0.01	<0.5	<5	<2	41	<1	9	<5	<10	40
1-4	<0.01	<0.5	<5	<2	78	1	13	<5	<10	40
1-5	<0.01	<0.5	<5	<2	76	<1	11	<5	<10	40
1-6	<0.01	<0.5	5	<2	77	<1	13	<5	10	60
1-7	<0.01	<0.5	<5	<2	78	1	13	<5	10	40
1-8	<0.01	<0.5	<5	<2	131	1	13	<5	<10	40
1-9	<0.01	<0.5	<5	<2	166	<1	13	<5	<10	50
1-10	0.01	<0.5	<5	<2	196	<1	14	<5	<10	50
1-11	<0.01	0.5	<5	<2	306	1	15	<5	<10	40
1-12	<0.01	5.3	<5	<2	1040	4	16	<5	10	110
1-13	<0.01	<0.5	<5	<2	255	1	13	<5	<10	110
1-14	<0.01	<0.5	<5	<2	79	<1	17	<5	<10	50
1-15	<0.01	<0.5	<5	<2	10	<1	11	<5	<10	20
1-16	<0.01	<0.5	5	<2	7	1	11	<5	<10	20
1-17	<0.01	<0.5	5	<2	15	<1	19	<5	10	30
1-18	<0.01	<0.5	<5	<2	6	<1	10	<5	<10	20
1-19	<0.01	<0.5	<5	<2	5	<1	10	<5	<10	<20
1-20	<0.01	<0.5	<5	<2	8	<1	13	<5	<10	<20
1-21	<0.01	<0.5	<5	<2	5	<1	12	<5	<10	<20
1-22	<0.01	<0.5	<5	<2	4	1	15	<5	<10	<20
1-23	<0.01	<0.5	<5	<2	9	<1	15	<5	<10	<20
1-24	<0.01	<0.5	<5	<2	13	<1	20	<5	<10	<20
1-25	<0.01	<0.5	7	<2	11	<1	38	<5	<10	<20
1-26	<0.01	<0.5	8	<2	14	1	44	<5	<10	<20
1-27	<0.01	<0.5	8	<2	12	<1	33	<5	<10	<20
1-28	<0.01	<0.5	10	<2	15	<1	20	<5	10	<20
1-29	<0.01	<0.5	9	2	11	<1	20	<5	<10	<20
3-1	<0.01	<0.5	8	<2	10	<1	21	<5	10	<20
3-2	<0.01	<0.5	10	<2	76	<1	20	<5	<10	<20
3-3	<0.01	<0.5	11	<2	62	1	22	<5	<10	<20
3-4	<0.01	<0.5	<5	<2	30	1	28	<5	<10	20
3-5	<0.01	<0.5	10	<2	18	<1	37	<5	<10	20
3-6	<0.01	<0.5	11	<2	15	1	30	<5	<10	<20
3-7	<0.01	<0.5	14	<2	20	<1	33	<5	<10	20
3-8	<0.01	<0.5	14	<2	18	1	42	<5	<10	20



3-9	<0.01	<0.5	13	<2	54	2	25	<5	<10	<20
3-10	<0.01	<0.5	12	4	164	3	34	<5	<10	30
3-11	<0.01	<0.5	12	2	185	2	23	<5	<10	30
3-12	0.01	<0.5	15	30	447	2	24	<5	<10	30
3-13	<0.01	<0.5	22	10	192	4	27	<5	<10	30
3-14	<0.01	<0.5	<5	<2	179	1	16	<5	<10	<20
3-15	<0.01	<0.5	5	<2	45	1	10	<5	<10	<20
3-16	<0.01	<0.5	<5	2	28	1	10	<5	10	20
3-17	<0.01	<0.5	<5	<2	25	1	13	<5	<10	<20
3-18	0.01	<0.5	<5	<2	28	1	12	<5	<10	20
4-1	<0.01	<0.5	<5	<2	10	<1	11	<5	<10	<20
4-2	<0.01	<0.5	<5	<2	13	<1	13	<5	<10	<20
4-3	<0.01	<0.5	<5	<2	16	<1	12	<5	<10	<20
4-4	0.01	<0.5	<5	<2	25	1	14	<5	<10	<20
4-5	0.01	<0.5	<5	<2	49	<1	12	<5	<10	<20
4-6	<0.01	<0.5	5	<2	55	<1	12	<5	<10	<20
4-7	<0.01	<0.5	<5	<2	33	1	13	<5	<10	<20
4-8	<0.01	<0.5	<5	<2	34	3	12	<5	10	<20
4-9	<0.01	<0.5	<5	<2	50	1	10	<5	10	<20
4-10	0.01	<0.5	<5	6	504	1	14	<5	<10	<20
4-11	0.01	<0.5	<5	17	1000	3	14	<5	10	<20
4-12	0.01	0.9	<5	59	>10000	14	22	<5	70	<20
4-13	<0.01	<0.5	<5	<2	43	<1	14	<5	10	<20
4-14	<0.01	<0.5	<5	<2	24	<1	16	<5	<10	20
4-15	<0.01	<0.5	5	2	20	<1	16	<5	<10	<20
4-16	<0.01	<0.5	<5	<2	27	<1	16	<5	10	<20
4-17	<0.01	<0.5	<5	<2	16	<1	14	<5	<10	20
4-18	<0.01	<0.5	<5	<2	25	2	19	<5	<10	20
4-19	<0.01	<0.5	<5	<2	10	<1	11	<5	<10	20
4-20	<0.01	<0.5	<5	<2	14	<1	11	<5	<10	20
4-21	<0.01	<0.5	<5	<2	14	<1	10	<5	<10	30
4-22	<0.01	<0.5	<5	<2	15	<1	11	<5	<10	30
4-23	<0.01	<0.5	<5	<2	12	<1	10	<5	<10	20
4-24	<0.01	<0.5	<5	<2	24	1	12	<5	<10	20
4-25	<0.01	<0.5	<5	<2	21	1	13	<5	<10	20
4-26	<0.01	<0.5	<5	<2	17	1	17	<5	10	20
4-27	<0.01	<0.5	<5	<2	7	<1	13	<5	<10	<20
4-28	<0.01	<0.5	<5	<2	11	<1	12	<5	<10	<20
4-29	<0.01	<0.5	<5	<2	11	<1	10	<5	10	<20
4-30	<0.01	<0.5	<5	<2	8	<1	10	<5	10	40
5-1	0.01	<0.5	5	<2	9	<1	9	<5	<10	130
5-2	<0.01	<0.5	<5	<2	21	<1	9	<5	<10	90
5-3	<0.01	<0.5	<5	<2	17	<1	7	<5	<10	60
5-4	<0.01	<0.5	<5	<2	14	<1	7	<5	<10	40

5-5	0.01	<0.5	<5	<2	13	<1	9	<5	<10	40
5-6	<0.01	<0.5	<5	<2	16	1	15	<5	<10	50
5-7	<0.01	<0.5	<5	<2	14	<1	14	<5	<10	30
5-8	<0.01	<0.5	<5	<2	16	1	13	<5	<10	20
5-9	<0.01	<0.5	<5	<2	11	<1	11	<5	<10	20
5-10	<0.01	<0.5	<5	<2	21	1	11	<5	<10	20
5-11	<0.01	<0.5	<5	<2	18	<1	17	<5	<10	20
5-12	<0.01	<0.5	<5	<2	19	1	13	<5	10	30
5-13	<0.01	<0.5	<5	<2	17	<1	14	<5	<10	30
5-14	<0.01	<0.5	<5	<2	22	1	15	<5	<10	40
5-15	<0.01	<0.5	<5	2	26	<1	13	<5	<10	40
5-16	<0.01	<0.5	<5	<2	24	1	12	<5	<10	40
5-17	<0.01	<0.5	<5	<2	40	1	18	<5	<10	40
5-18	<0.01	<0.5	6	<2	49	<1	18	<5	<10	40
5-19	<0.01	<0.5	<5	<2	59	1	22	<5	<10	40
5-20	<0.01	<0.5	<5	<2	26	<1	16	<5	<10	30
5-21	<0.01	<0.5	<5	<2	19	<1	18	<5	<10	30

## References:

- 
- <sup>1</sup> Freeman, 1986, Huckitta 1:250,000 Geology Explanatory Notes. Northern Territory Geological Survey.
  - <sup>2</sup> NTGS, 2008. Northern Territory Government 'Ore-Struck' promotional documents and website.
  - <sup>3</sup> Budd, A. (compiler), 2001. Arunta Inlier Synthesis. Geoscience Australia.
  4. Hebei Bureau of Geology and Mineral Development, May 2017: AMI Geological Survey Report, 2017.