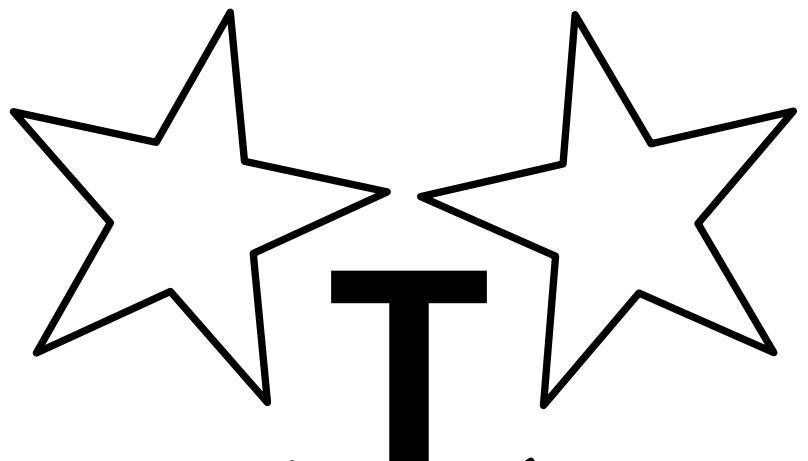


Tri-Star Energy Company

MA 31362 6th Annual and Final Report
01/11/2017 to 12/07/2023



| | |
|---------------------------------|---------------------------------------------------------------|
| Titleholder | Tri-Star Energy Company ARBN 089 539 695 |
| Operator | Tri-Star OPCO LLC ARBN 138 462 281 |
| Project / Group: | Pedirka Basin Project - GR470 |
| Report Title | MA 31362 6th Annual and Final Report 01/11/2017 to 12/07/2023 |
| Current Target Commodity | Minerals |
| 1:250 000 Mapsheets | McDills SG5307 |
| Author | Katrina Macdonald, Tenure Advisor |
| Tenement Manager | Katherine Hobbins Matthew Jeffries (AHR) |
| Date of Report | 17/07/2023 |
| Contact Details | Tri-Star Energy Company PO Box 7128 BRISBANE QLD 4000 |
| Telephone | (07) 3236 9800 |
| Facsimile | (07) 3221 2146 |
| Email for technical data | tenures@tri-stargroup.com |
| Email for expenditure | tenures@tri-stargroup.com |

| | |
|----------------------------------------------------------------------------------------------------|----|
| ABSTRACT..... | 4 |
| 1. LOCATION, TITLE HISTORY, PHYSIOGRAPHY AND ACCESS | 5 |
| 1.1 Topography | 7 |
| 2. GEOLOGICAL SETTING – REGIONAL..... | 8 |
| 3. GEOLOGICAL SETTING – LOCAL | 9 |
| 4. GEOLOGICAL MODEL, EXPLORATION RATIONALE AND MINING HISTORY..... | 11 |
| 4.1 Base and precious metals..... | 14 |
| 4.2 Coal Resources | 14 |
| 5. EXPLORATION ACTIVITIES CONDUCTED DURING THE MA 31362 FULL TERM – COMPLETE TITLE HISTORY..... | 15 |
| 5.1 Geological activities and office studies..... | 15 |
| 5.2 Remote sensing & Geophysical activities..... | 17 |
| 5.3 Surface Geochemistry | 17 |
| 5.4 Drilling..... | 17 |
| 5.5 Geotechnical studies..... | 17 |
| 5.6 Resources and reserve estimation/modelling..... | 17 |
| 5.7 Pastoralist Liaison..... | 17 |
| 6. CONCLUSIONS AND RECOMMENDATIONS | 19 |
| 7. BIBLIOGRAPHY | 20 |
| 8. COPYRIGHT STATEMENT | 20 |

ABSTRACT

The following report is the 6th Annual and Final Report for MA 31362, which formed part of the Tri-Star Group (Tri-Star), the 100% holder of Tri-Star Energy Company, Pedirka Basin Project.

The Pedirka Basin Project currently comprises thirteen (13) Mineral Authorities, 31358, 31361, 31362, 31363, 31364, 31371, 31372, 31373, 31374, 31375, 31376, 31377 and 31378 which were granted concurrently on 1 November 2017. The Pedirka Basin Project is geologically located over the Amadeus, Pedirka and Eromanga basins. The Pedirka Basin Project area holds multiple potential resource commodities including base and precious metals, iron and coal.

The project area is located approximately 200 kilometres south-east of Alice Springs along the western margin of the Pedirka Basin, and partially overlaps the pastoral leases of Andado, New Crown, Horseshoe Bend, Lilla Creek and Umbeara.

No on-ground was undertaken on MA 31362 during the life of the mineral title.

Tri-Star recently undertook a review of its assets and, as part of this review, MA 31362 was identified for full relinquishment effective 12 July 2023.

1. LOCATION, TITLE HISTORY, PHYSIOGRAPHY AND ACCESS

Key particulars of MA 31362 are as follows:

| | |
|---------------------------|-------------------------------------|
| Titles: | 31362 |
| Group Reporting No.: | GR470 |
| Status: | Granted |
| Application date: | 05/08/2016 |
| Grant date: | 01/11/2017 |
| Full surrender date: | 12/07/2023 |
| Locality: | 200KM SOUTHEAST OF ALICE SPRINGS |
| Act permit granted under: | <i>Mineral Titles Act 2010 (NT)</i> |

MA 31362 consisted of 250 sub blocks covering an area of approximately 776km². A partial relinquishment of 30 sub-blocks was completed in December 2021. Following a review of the company's assets, Tri-Star determined that MA 31362 was to be surrendered in full.

MA 31362 formed part of the Pedirka Basin Project is located in the Rodinga Ward of the MacDonnell Region Council area in the south-eastern portion of the Northern Territory, near the border of the Northern Territory and South Australia (Figure 1).

The centre of the Pedirka Basin Project area lies approximately 200 kilometres southeast of Alice Springs, 180 kilometres east of Elrunda (located at the junction of the Stuart & Lasseter Highways) and 180 kilometres north-east of the Kulgera Road House (located on the Stuart Highway). The community of Aputula (Finke) lies within the greater project area; and the areas of primary interest are located on agricultural properties.

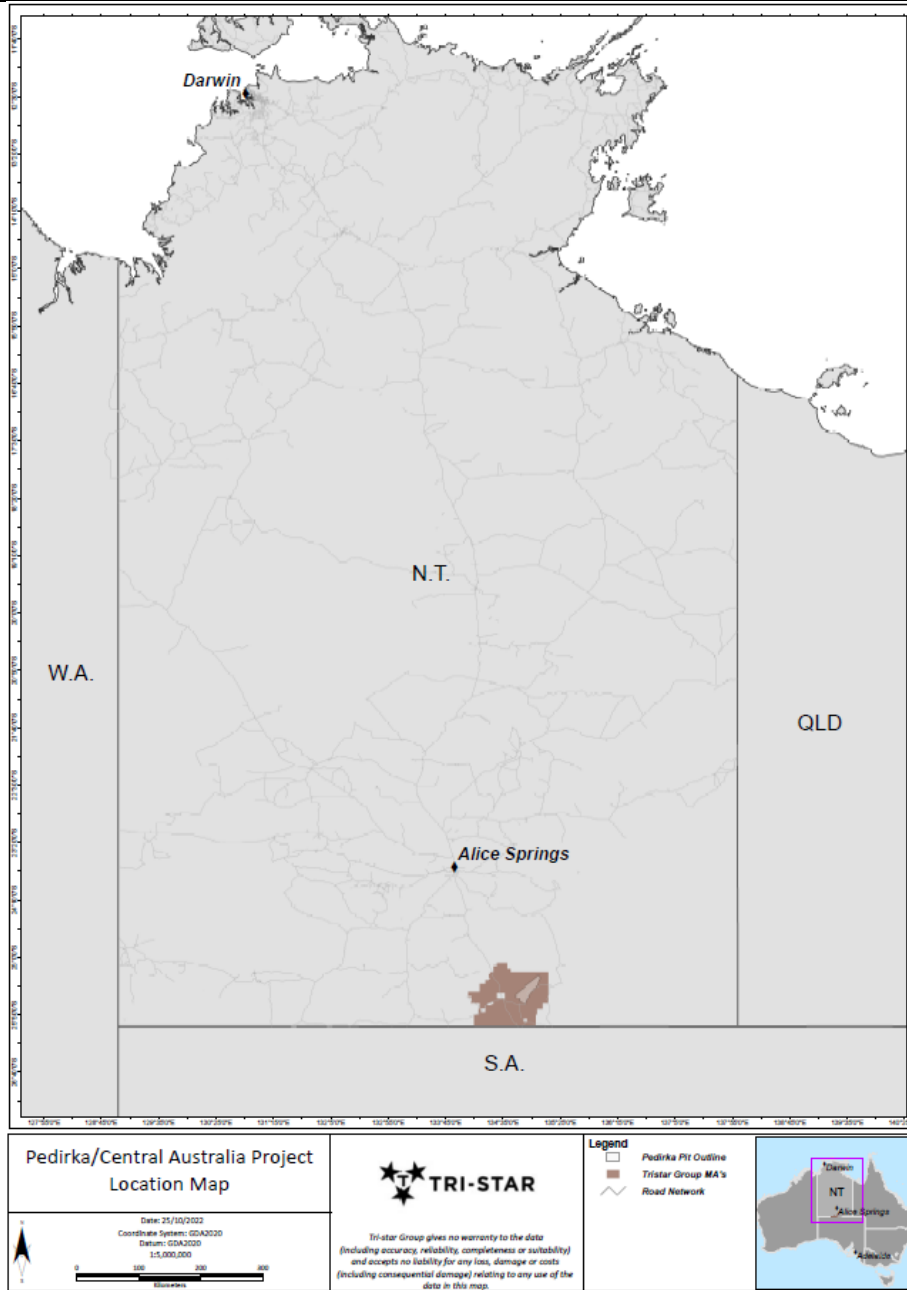


Figure 1. Pedirka Basin Project – Location Map

1.1 Topography

The topography of the permit area, shown in Figure 2, is dominated by the floodplains of the Finke River, Lilla Creek and Goyder Creek. The central area of the tenure group is crossed by areas of north trending sand dunes that are less than 10 metres in height. The elevation above sea level increases towards the southern ends of the tenures where the Newlands and Beddome Ranges occur. The Pedirka Basin Project is traversed by various property access roads and tracks between the many dams and water bores.

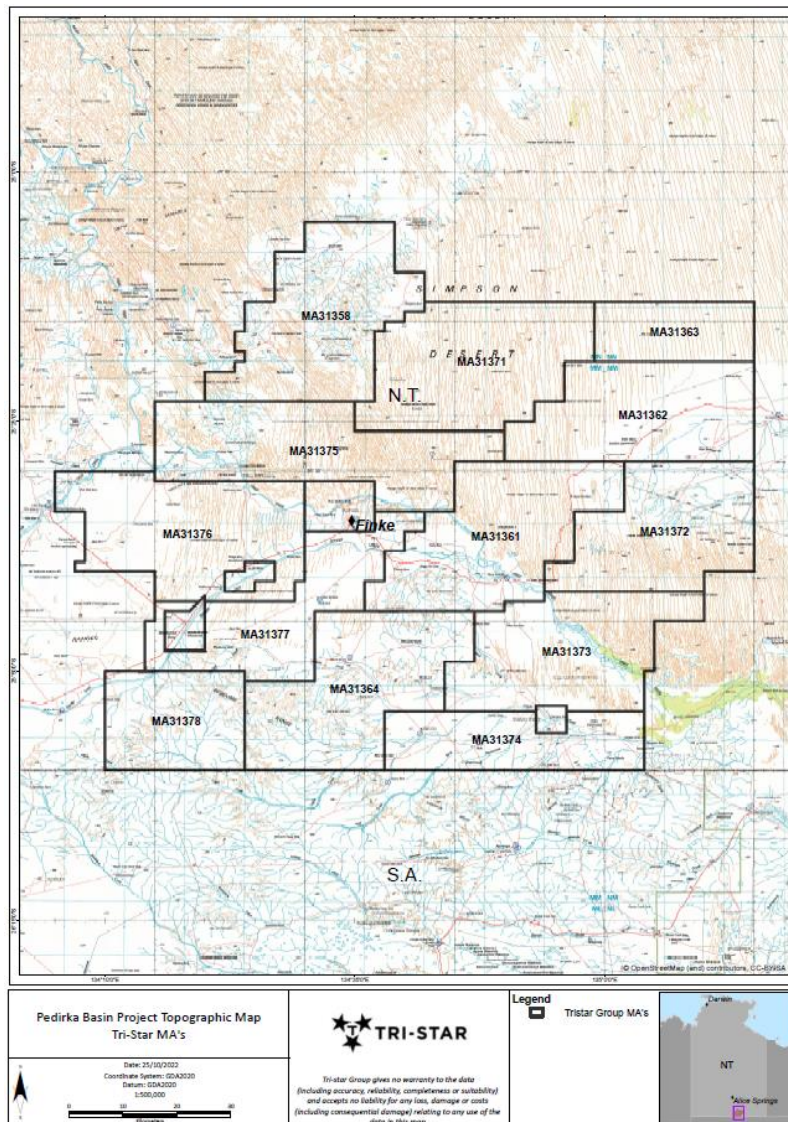


Figure 2. Pedirka Basin Project – Topographic Map

The project is located on the Finke 1:250,000 mapsheet SG5306, and the McDills 1:250,000 mapsheet SG5307. The exploration licences are located on the following 1:100,000 mapsheets:

- Engoordina - 5747;
- Musgrave - 5847;
- Andado - 5947;
- Beddome - 5746;
- Finke - 5846; and
- McDills - 5946.

2. GEOLOGICAL SETTING – REGIONAL

The Pedirka Basin Project is geologically located over the Amadeus, Pedirka and Eromanga basins as indicated in Figure 3. Rocks of the Musgrave Province are interpreted to be present at relatively shallow depths below these basin sediments in the south-west of the project area.

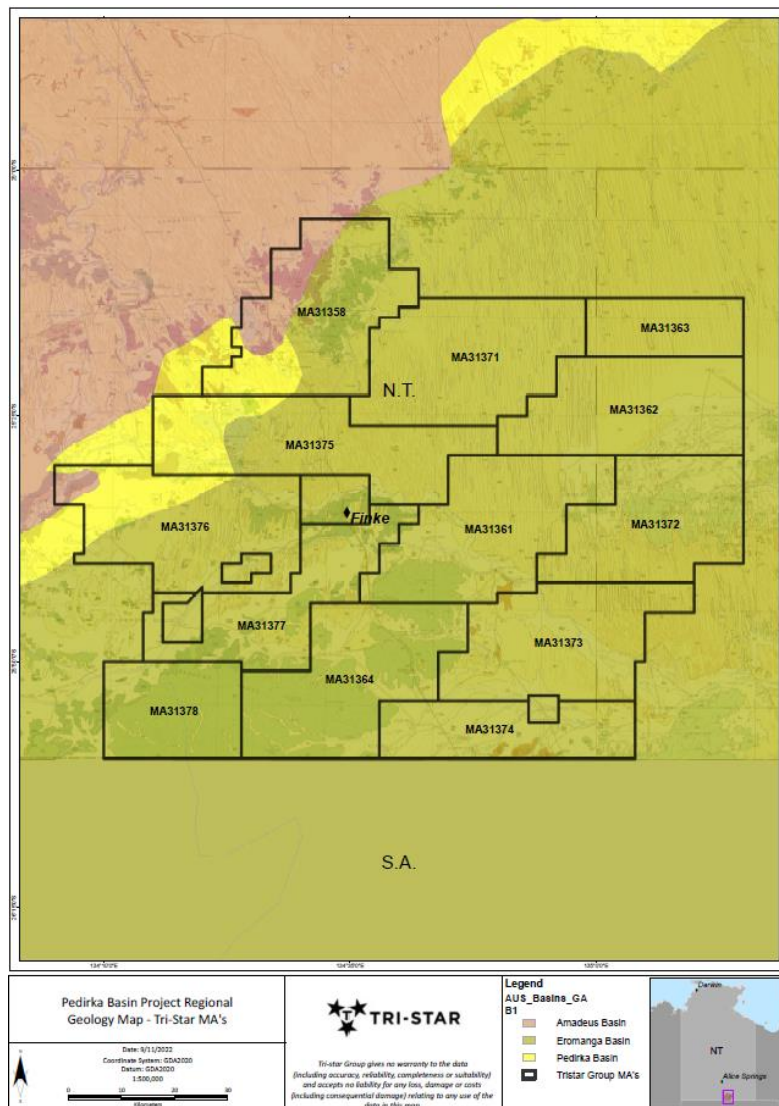


Figure 3. Pedirka Basin Project – Regional Geology

3. GEOLOGICAL SETTING – LOCAL

MA 31362 as part of the Pedirka Basin Project is geologically located over the sediments of the Amadeus, Eromanga and Pedirka basins and overlie the crystalline basement rocks of the Mesoproterozoic Musgrave Province within Tri-Star’s Pedirka Basin Project. The Musgrave Province historically underwent a structural evolution which makes it a favourable domain to host economic minerals. The regional NE-SW trending Woodroffe Thrust, a deep seated, crustal scale fault, can be interpreted to extend into Tri-Star’s project area, with the prospective Fregon Domain.

The geologic units of the project’s Pedirka Basin are permo-carboniferous in age and are correlative with sediments of the Cooper and Officer Basins. The primary structural features of the Pedirka Basin are the Eringa and Madigan Troughs, which are also the main depocentres that are separated by the McDills Anticline. The depth to the base of the Eromanga Basin (Algebuckina Sandstone) within the tenures ranges from about 80m in the north-east to over 250m. Erosion of the Purni Formation prior to the deposition of the Algebuckina Sandstone has removed the upper sequence of strata, thus contributing to the apparent thinning of the Purni Formation towards the outcrop in the north-western part of the tenements.

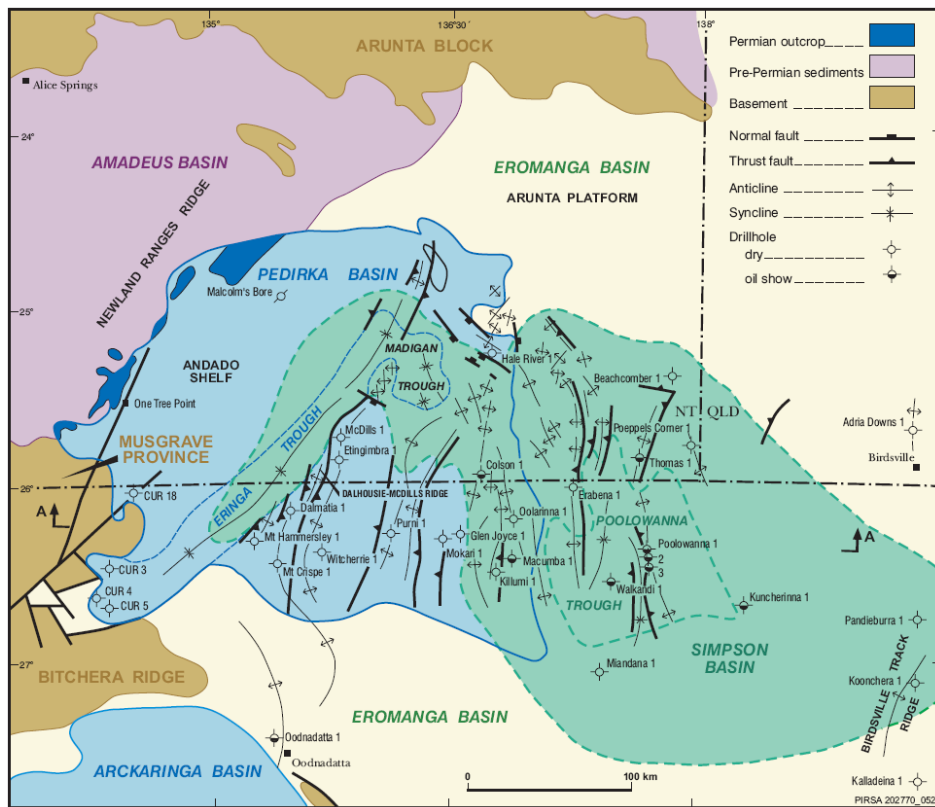


Figure 4. Pedirka Structural Elements (Source: Alexander et al, 2006)

Middleton et al (2005) has defined the stratigraphy of the western Pedirka Basin, and the potential petroleum source rocks as shown below.

| Age | Stratigraphy | Lithology | Depositional environment | Source | Oil/gas | Basin |
|------------|--------------------------------------------|-----------|-------------------------------|-----------------------------------------------------------------------------------------------------------------------------|---------------------------------------------------------------------------------------------------------|-----------|
| Tertiary | Recent sediments | | Aeolian and fluvial | A vertical green bar with red arrows pointing to the Poolowanna Sandstone, Peera Perra Formation, and Purni Formation rows. | A vertical green bar with symbols: a white circle, a black circle, and a white circle with a black dot. | Eyre |
| | Eyre Formation | | Fluvial and aeolian | | | |
| Cretaceous | Winton Formation | | Fluvial | | | Erombanga |
| | Alluru Mudstone | | Marine | | | |
| | Toolebuc Formation Cadna-owie Formation | | | | | |
| Jurassic | Algebuckina Sandstone | | Braided fluvial | | | Erombanga |
| | Poolowanna Sandstone | | Fluvial / flood plain | | | |
| Triassic | Peera Perra Formation | | Lacustrine and fluvial | | | Simpson |
| | Walkandi Formation | | Lacustrine | | | |
| Permian | Purni Formation | | Lacustrine / fluvial / swamps | | | Pedirka |
| | Crown Point Formation | | Fluvial / glacial | | | |
| Carb. | | | | | | |
| Pre-Carb. | Undifferentiated | | | Amadeus | | |

Figure 5. Pedirka Basin Regional Stratigraphy (Source: Middleton et al, 2005)

4. GEOLOGICAL MODEL, EXPLORATION RATIONALE AND MINING HISTORY

Extensive data review of the Northern Territory Government's Geoscience Exploration and Mining Information System (GEMIS) and records identified a number of previous exploration licences (EL) located over the Pedirka Basin Project area. These licences include, at least in part: EL 821, 8251, 8252, 8253, 8265, 8267, 2398, 23802, 25163 and 23740. Investigations into the reports and data produced from these permits found that limited drilling has occurred over the area and therefore limited data is available from this source in the assessment of the Pedirka Basin Project.

The exploration drilling and seismic lines that were undertaken by Tri-Star within the Pedirka Basin Project are that occur thereon, have been listed below and shown in Figure 6.

Table 1. Seismic Data Summary

| Survey ID | Year | Operator | Length (km) |
|-----------|------|------------------------------|-------------|
| PB-1101 | 2011 | Tri-Star Coal Operations LLC | 61.12 |
| PB-1102A | 2011 | Tri-Star Coal Operations LLC | 75.09 |
| PB-1103 | 2012 | Tri-Star Coal Operations LLC | 89.64 |
| PB-1104 | 2012 | Tri-Star Coal Operations LLC | 15.27 |
| PB-1105 | 2012 | Tri-Star Coal Operations LLC | 76.22 |
| PB-1106 | 2012 | Tri-Star Coal Operations LLC | 75.81 |
| PB-1107 | 2012 | Tri-Star Coal Operations LLC | 73.98 |
| PB-1108 | 2012 | Tri-Star Coal Operations LLC | 63.23 |
| PB04 | 2011 | Tri-Star Coal Operations LLC | 32.72 |

Table 2. Drill Hole Summary

| MA | HOLE ID | Type of Hole | Drilled Date | Depth |
|---------|------------------|--------------|--------------|-------|
| MA31358 | PBIN_02 | DCD | 17-Dec-11 | 69 |
| MA31358 | PBIN_05 | HRD | 28-Jan-13 | 80 |
| MA31358 | PBIN_08 | HRD | 1-Feb-12 | 144 |
| MA31361 | PBCN_118 | HRD | 4-Aug-14 | 352 |
| MA31361 | PBCN_119 | HRD | 1-Aug-14 | 174 |
| MA31361 | PBCN_120 | HRD | 27-Jul-14 | 359 |
| MA31361 | PBCN_121 | HRD | 30-Jun-13 | 350 |
| MA31361 | PBCN_122 | HRD | 26-Jun-13 | 350 |
| MA31361 | PBCN1102_1105A* | HRD/DCD | 21-Jun-13 | 318 |
| MA31361 | PBCN1102_1825 | HRD | 15-Jun-13 | 325 |
| MA31361 | PBCN1102_1940* | HRD | 25-May-13 | 400 |
| MA31361 | PBCN1102_1940A | HRD | 27-May-13 | 270 |
| MA31361 | PBCN1102_1940A* | HRD/DCD | 27-May-13 | 270 |
| MA31361 | PBCN1102_2175 | HRD | 23-May-13 | 400 |
| MA31361 | PBCN1103_7980A | HRD/DCD | 8-Jun-13 | 350 |
| MA31361 | PBCN1105_7400** | HRD | 28-Apr-13 | 375 |
| MA31362 | PBCN_117 | HRD | 6-Aug-14 | 286 |
| MA31362 | PBCN1105_6350A** | HRD | 25-Aug-12 | 325 |

Tri-Star Energy Company Confidential Information – unauthorised use prohibited

| | | | | |
|----------|------------------|----------------------|-----------|-------|
| MA31362 | PBCN1105_6650 | HRD | 10-Aug-12 | 129 |
| MA31362 | PBCN1105_6650A | HRD | 12-Aug-12 | 175 |
| MA31362 | PBCN1105_6650B | HRD | 16-Aug-12 | 348 |
| MA31362 | PBCN1105_6650C** | HRD/DCD | 15-May-13 | 349 |
| MA31362 | PBCN1105_6825** | HRD | 25-Apr-13 | 350 |
| MA31363 | PAC001 | Air Core | 17-Mar-14 | 50 |
| MA31363 | PAC002 | Air Core | 17-Mar-14 | 50 |
| MA31363 | PAC003 | Air Core | 18-Mar-14 | 50 |
| MA31363 | PAC004 | Air Core | 18-Mar-14 | 50 |
| MA31363 | PAC005 | Air Core | 18-Mar-14 | 50 |
| MA31363 | PAC006 | Air Core | 18-Mar-14 | 50 |
| MA31363 | PAC007 | Air Core | 19-Mar-14 | 50 |
| MA31363 | PAC008 | Air Core | 19-Mar-14 | 50 |
| MA31363 | PAC009 | Air Core | 19-Mar-14 | 50 |
| MA31363 | PBCN1106_6025** | HRD | 4-May-13 | 350 |
| MA31363 | PBCN1106_6087** | HRD / DCD | 7-May-13 | 375 |
| MA31363 | PBCN1106_6255** | HRD | 1-May-13 | 375 |
| MA31371 | PBIN_07 | HRD | 30-Jan-12 | 126 |
| MA31375 | PBCN_116 | HRD | 9-Aug-14 | 222 |
| MA31375 | PBIN_01 | HRD | 26-Jan-12 | 120 |
| MA31375 | PBIN_04 | HRD | 6-Feb-12 | 102 |
| MA31375 | PBIN_06 | HRD | 29-Jan-12 | 120 |
| MA31376 | PBIN_03 | HRD | 5-Feb-12 | 132 |
| MA31361 | BMR Finke 2 | Exploration | - | 9999 |
| MA31372 | New Crown 1 | Exploration | - | 960 |
| MA31376 | LILLA CREEK 1 | Exploration | - | 183.5 |
| MA31364 | CUR 10 | Mineral | - | - |
| MA31364 | CUR 19 | Mineral | - | - |
| MA31372 | New Crown 1 | Petroleum | - | - |
| MA31376 | LILLA CREEK 1 | NT Geological Survey | - | - |
| MA 31377 | CUR 11 | Mineral | - | - |

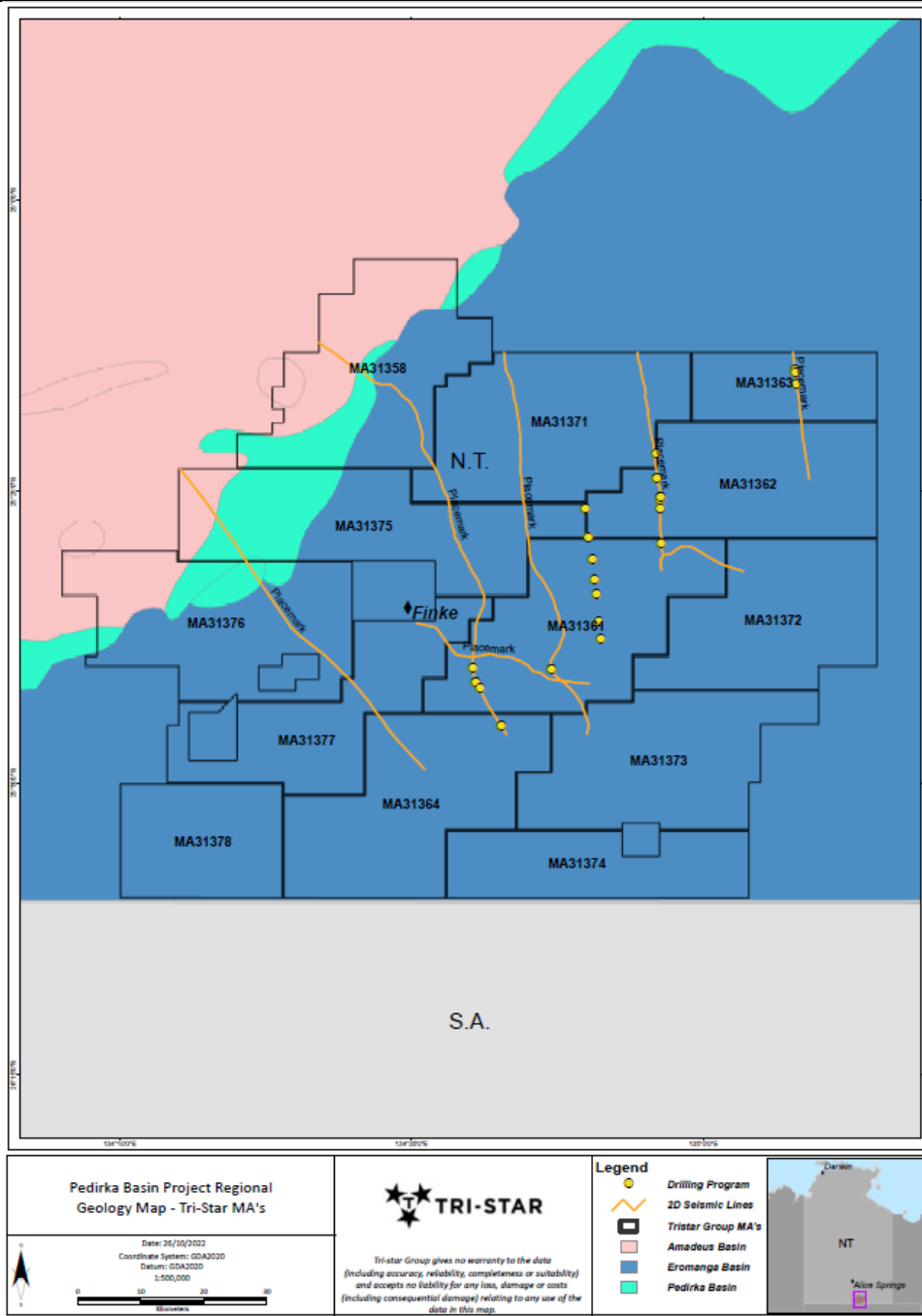


Figure 6. Historical Seismic and Drill Site Map

The Pedirka Basin Project is potentially prospective for the discovery of a range of minerals, including but not limited to ironstones, precious metals, base metals, silica and coal.

4.1 Base and precious metals

The sediments of the Amadeus, Eromanga and Pedirka basins overlie the crystalline basement rocks of the Mesoproterozoic Musgrave Province within Tri-Star's Pedirka Basin Project. The Musgrave Province has undergone a structural evolution which makes it a favourable domain to host economic minerals. The regional NE-SW trending Woodroffe Thrust, a deep seated, crustal scale fault, can be interpreted to extend into Tri-Star's project area, with the prospective Fregon Domain underlying the younger sediments in the project area.

These regional crustal scale faults and associated structures are prospective for hosting mineral systems, including;

- Nickel, copper and platinum group element (Ni-Cu-PGE) systems,
- Copper-gold systems,
- VHMS systems,
- SEDEX systems.

In both Western Australia and South Australia, the Musgrave Province sequences are proven hosts to base-metal and PGE mineralisation, associated with the mafic and ultramafic rocks (e.g., the Nebo–Babel deposit and the Claude Hills deposit).

The exposed eastern Musgrave Province of South Australia and the Northern Territory has seen little exploration activity, the overall metamorphic grades are lower and there is a greater proportion of volcanic and sedimentary protoliths, both of which are factors that enhance the prospectivity of this area for a range of commodities, as outlined above.

An unexplained circular magnetic anomaly is located within the south-western portion of the project area and is interpreted to be associated with the rocks of the Musgrave Province. Based on the review of historical exploration results and depth to basement calculations, it is interpreted that the basement rocks of the Musgrave Province within the area are about 100m below the surface.

4.2 Coal Resources

Tri-Star's original exploration focus observed a sub-crop edge of the Purni Formation, which was thought to represent a lacustrine, meandering fluvial swamp depositional environment conducive to coal formation.

Exploration undertaken between 2010 and 2014 identified coal measures within the Purni Formation, located within the eastern half of the project area. These coal measures are made up of multiple continuous coal seams, which show lateral thinning and thickening and strike northeast – southwest over a length of approximately 175km, with a gentle dip to the southeast at less than one degree.

The top of the coal measures occurs at approximately 130-200m below the surface in the north of the project area and 200-250m below the surface in the central and southern section of the project area. With the coal measures occurring over an interval up to 100+m and containing up to 50+m net coal.

Tri-Star's original intention for these MAs was to develop a coal project. However, as a result of exploration, technical, commercial and infrastructure studies for this area, Tri-Star's current focus is on understanding the circular magnetic anomaly located in the south-west of the project area and the associated potential of discovering base and precious metals within the area. Of particular interest are the rocks of the Musgrave Province which are interpreted to occur under younger sedimentary and/or aeolian sand cover.

5. EXPLORATION ACTIVITIES CONDUCTED DURING THE MA 31362 FULL TERM – COMPLETE TITLE HISTORY

No on-ground exploration activities were undertaken in MA 31362 during the full term for which Tri-Star held the tenure.

5.1 Geological activities and office studies

Base & precious metals

A technical working group was engaged to complete an integrated assessment of all Pedirka minerals data. The group deployed advanced geophysical methods and remote sensing technology to assist Tri-Star in finalising its exploration plan and focus. The working group recommended Tri-Star progress further field prospecting and surface gravity data acquisition; however, this work was completed outside of MA 31362 (Figure 7).

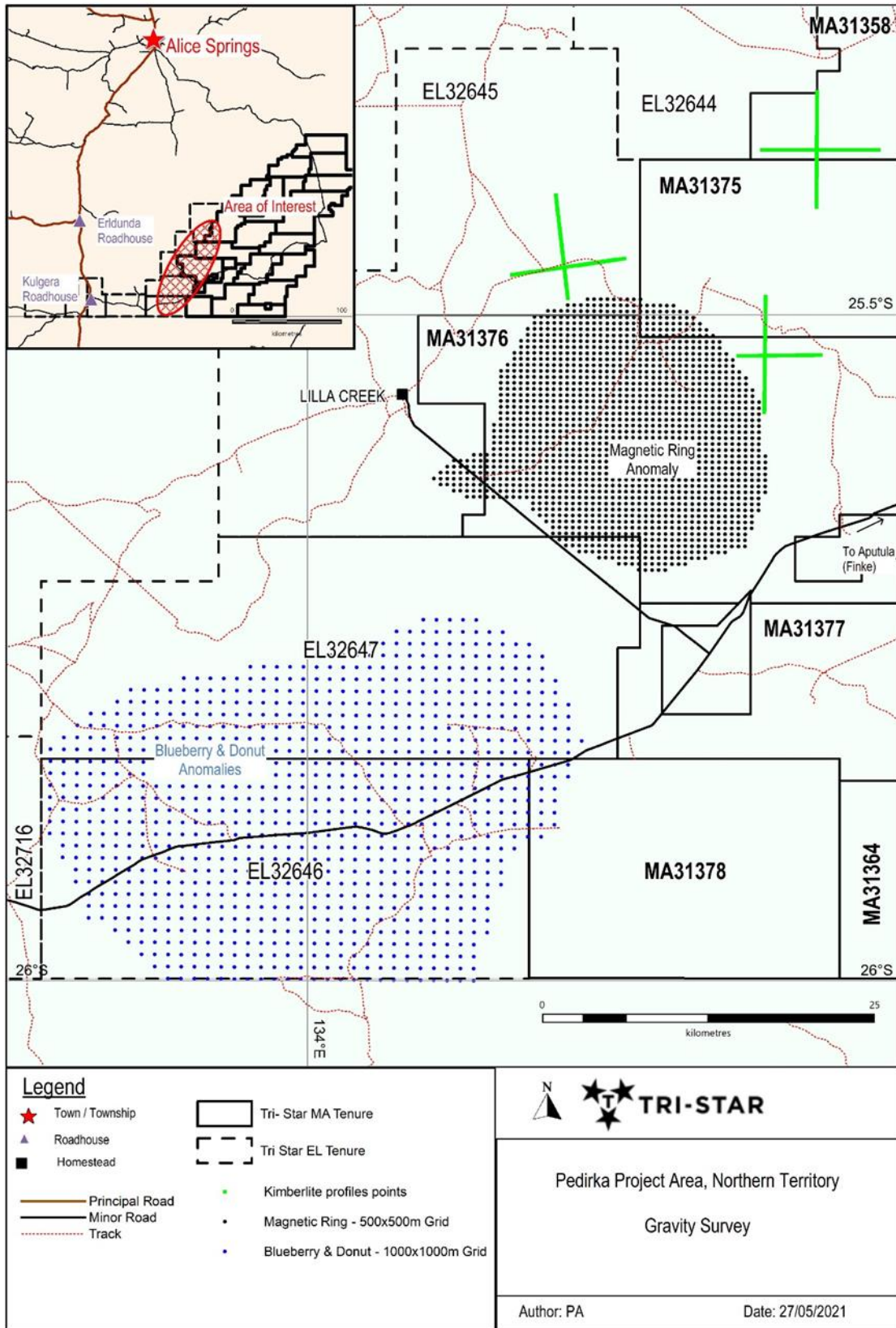


Figure 7. Gravity Survey

Coal Resources

Tri-Star's original intention for the Pedirka Basin Project was to develop a coal project. Tri-Star has completed a number of technical, commercial and infrastructure studies to establish the viability of developing the coal resources located within the project area in the current market environment. These studies indicate that mining of thermal coal is unlikely to be commercially viable at this time, due to the distance of the project area to necessary transport infrastructure.

Tri-Star's current focus is on understanding the circular magnetic anomaly located in the south-west of the project area and the associated potential of discovering base and precious metals within the area. Of particular interest are the rocks of the Musgrave Province which are interpreted to occur under younger sedimentary and/or aeolian sand cover.

5.2 Remote sensing & Geophysical activities

No remote sensing and geophysical activities were completed on MA 31362.

5.3 Surface Geochemistry

No surface geochemistry was undertaken on MA 31362.

5.4 Drilling

No drilling was undertaken on MA 31362.

5.5 Geotechnical studies

No geotechnical studies were undertaken on MA 31362.

5.6 Resources and reserve estimation/modelling

Activities undertaken to date on MA 31362 and the associated results are not of a nature that would allow a resource to be estimated.

5.7 Pastoralist Liaison

Tri-Star maintained contact through the Central Lands Council and the Traditional Owners legal representative in Brisbane to keep all parties updated around Tri-Star's planned field-based activities. An on-permit meeting was held on 7th April 2022 to provide information to the Yankunytjara Matutjara Aboriginal Corporation (YMAC) and other relevant traditional owners about Tri-Star's activities. Refer to Figure 8 below for the Pedirka Basin Project Native Title map.

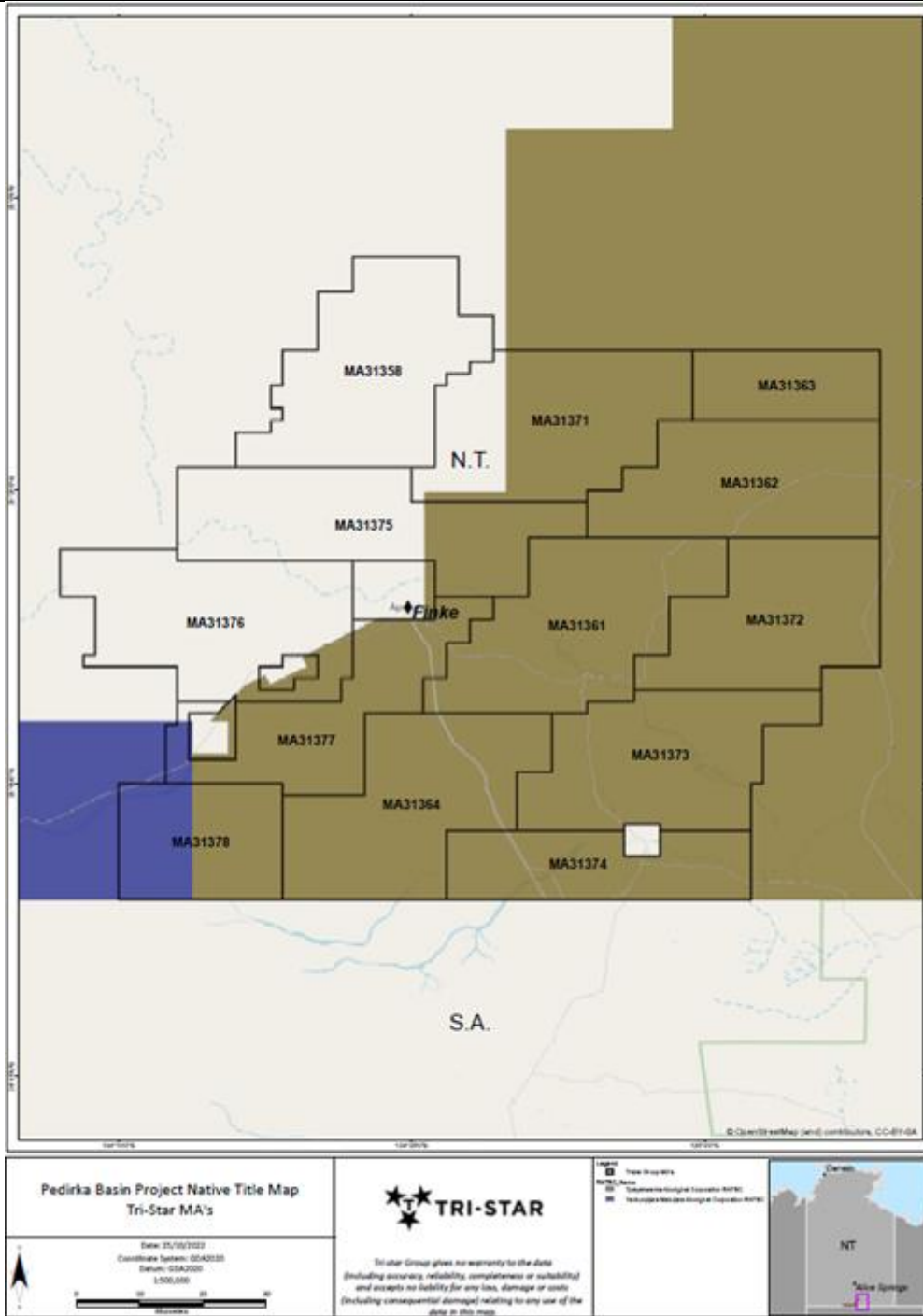


Figure 8. Pedirka Basin Project Native Title Map

6. CONCLUSIONS AND RECOMMENDATIONS

MA 31362 formed part of the larger Pedirka Basin Project and subsequently was identified for full relinquishment. No on-ground exploration activity was completed during the entire term of MA 31362.

7. BIBLIOGRAPHY

Alexander, E.M. and Hibburt, J.E. (Eds), 1996: The petroleum geology of South Australia. Vol. 2: Eromanga Basin. South Australia. Department of Mines and Energy. Report Book, 96/20.

Alexander, E.M. and Jensen-Schmidt, B., 1995: Eringa Trough exploration opportunity. South Australia. Department of Mines and Energy. Report Book, 95/36.

Alexander, E.M., Pegum, D., Tingate, P., Staples, C.J., Michaelsen, B.H. and McKirdy, D.M., 1996: Petroleum potential of the Eringa Trough in South Australia and the Northern Territory. APEA Journal, 36(1):322-349.

Ambrose G., 2000: Hydrocarbon Potential of the Pedirka Basin, Northern Territory, Australia. Northern Territory Geological Survey, Report 2000-012.

Ambrose, G.J., Liu, K., Deighton, I., Eadington, P.J. and Boreham, C.J., 2002: New petroleum models in the Pedirka Basin, Northern Territory, Australia APPEA Journal 42(1).

Middleton, M. F., Barker, C. E. and Heugh, J., 2005: The Geology of the western part of the Pedirka Basin: Madigan and Eringa troughs. Central Australian Basins Symposium, Alice Springs, 16-18 August 2005.

8. COPYRIGHT STATEMENT

ACKNOWLEDGEMENT AND WARRANTY

1. Subject to 2, the mining resource authority holder acknowledges that this report, including the material, information and data incorporated in it, has been made under the direction or control of the Northern Territory within the meaning of section 176 of the *Copyright Act 1968* (Cth).
2. To the extent that copyright in any material included in this report is not owned by the Northern Territory, the resource authority holder warrants that it has the full legal right and authority to grant, and does hereby grant, to the Northern Territory, subject to any confidentiality obligation undertaken by the Northern Territory, the right to do (including to authorise any other person to do) any act in the copyright, including to:
 - a. use;
 - b. reproduce;
 - c. publish; or
 - d. communicate in electronic form to the public, such material, including any data and information included in the material.
3. Without limiting the scope of 1 and 2 above, the resource authority holder warrants that all relevant authorisations and consents have been obtained for all acts referred to in 1 and 2 above, to ensure that the doing of any of the acts is not unauthorised within the meaning of section 29(6) of the *Copyright Act 1968* (Cth).