

# **Annual Report**

## **Exploration Licence 27041**

***Holder: CHINA AUSTRALIA LAND RESOURCES PTY LTD***

***Operator: CHINA AUSTRALIA LAND RESOURCES PTY LTD***

***Reporting Period: 2 June 2015 to 1 June 2016***

***Sheet Reference: 1 :250,000 Pine Creek Metallogenic ( SD52-08)***

Author: **Xiancan Li**

Date: *28<sup>th</sup> July 2016*

Report No:

Copies To: Department of Mines and Energy- NT

*China Australia Land Resources Pty Ltd*

The contents of this Report remain the property of *China Australia Land Resources Pty Ltd.* and may not be published in whole or in part, nor used in a company report without the written consent of the company

**July. 2016**

**CONTENT**

CONTENT .....	1
SUMMARY .....	1
1.0 INTRODUCTION .....	3
2.0 LOCATION AND ACCESS .....	3
<i>FIG 1 LOCATION MAP OF EL27041</i> .....	4
3.0 LICENCE DETAILS .....	4
<i>TABLE 1: LICENCE DETAILS FOR EL27041</i> .....	5
4.0 PHYSIOGRAPHY .....	5
5.0 PREVIOUS EXPLORATION .....	5
6.0 EXPLORATION COMPLETED DURING CURRENT REPORTING PERIOD .....	6
<i>FIG2 MAGNETIC TMI ABNORMAL OF EL27041</i> .....	7
7.0 EXPENDITURE STATEMENT .....	7
8.0 PROPOSED PROGRAMME AND BUDGET FOR NEXT YEAR .....	7
9.0 REFERENCES .....	8

**SUMMARY**

*EL27041 was granted to CHINA AUSTRALIA LAND RESOURCES PTY LTD 5th August 2015. This report represents Year 7 of the Licence. This Annual report was granted to China Australia Land Resources PTY LTD. And the tenure holder acknowledges that this Report, including the material, information and data incorporated in it, has been made under the direction or control of the Northern Territory (the NT) within the meaning of section 176 of the Copyright Act 1968.*

*To the extent that copyright in any material included in this Report is not owned by the NT, the tenure holder warrants that it has the full legal right and authority to grant, and hereby does grant, to the NT, subject to any confidentiality obligation undertaken by the NT, the right to do (including to authorize any other person to do) any act in the copyright, including to: use;· reproduce;· publish; and communicate in electronic form to the public, such material, including any data and information included in the material.*

*Without limiting the scope of above, the tenure holder warrants that all relevant authorizations and consents have been obtained for all acts referred to above, to ensure that the doing of any of the acts is not unauthorized within the meaning of section 29(6) of the Copyright Act.*

*Exploration Licence 27041 is situated on the Pine Creek (SD52-08) 1:250,000 geological mapsheet in the Northern Territory. It is located around 20 kilometers south of Daly River.*

*During the reporting period, we did not carry out any outside exploration workload except some study of TMI completed in office and found no positive information.*

*The proposed program for this year includes the collection of history geological program around exploration licence 27041 to adequately assess the potential of the licence to contain base metal, gold, Uranium, REE, etc.*

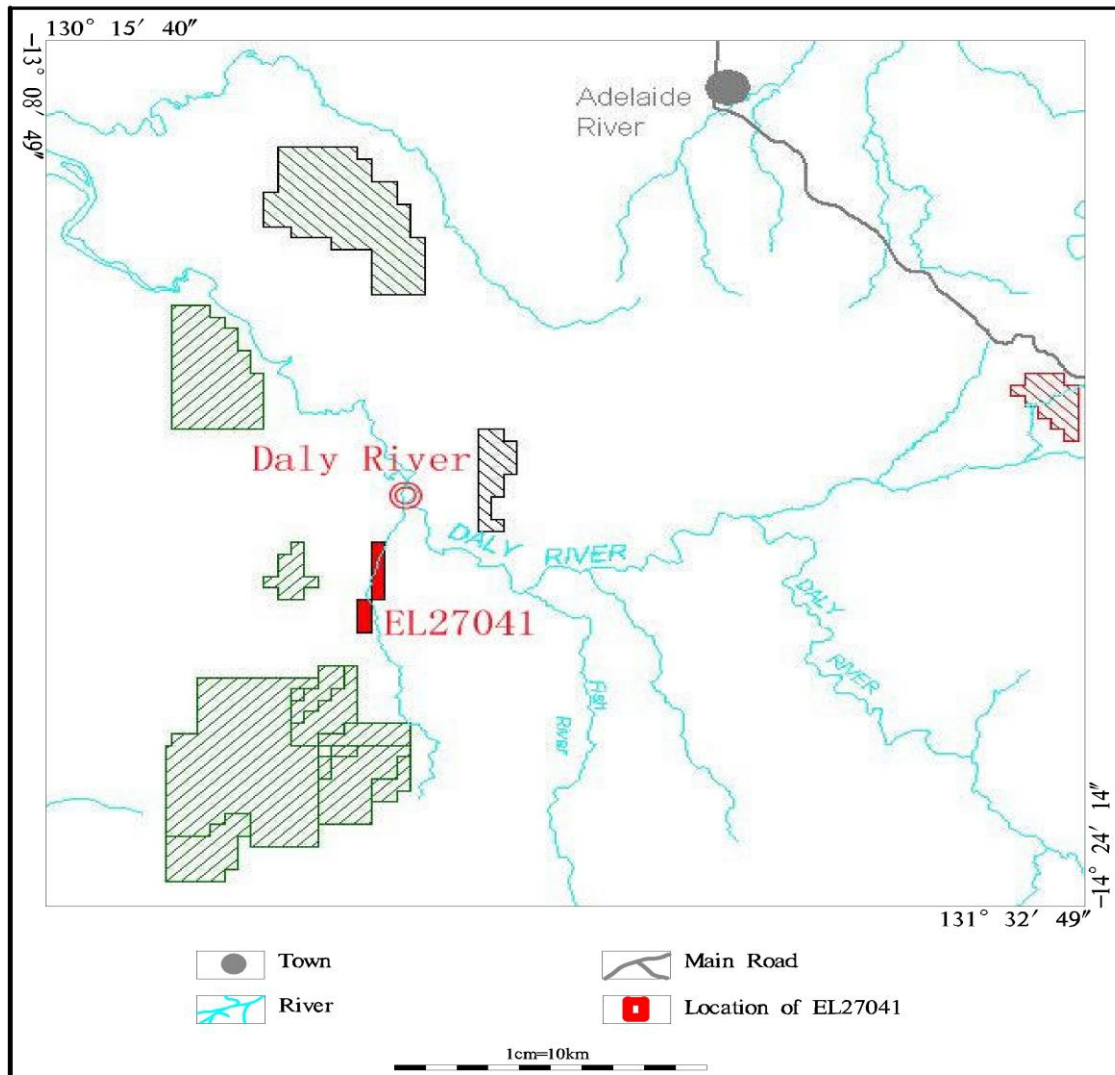
*The total expenditure for the Licence amounted to \$2000.*

## 1.0 INTRODUCTION

*This annual report outlines exploration activities undertaken by China Australia Land Resources Pty Ltd (CALR) on Exploration Licence 27041 between 2 June 2015 and 1 June 2016. This period represents Year 7 of the Licence.*

## 2.0 LOCATION AND ACCESS

*Exploration Licence 27041 is situated on the Pine Creek (SD52-08) 1:250,000 geological mapsheet in the Northern Territory. It is located around 20 kilometres south of Daly River. A location map is provided as Figure 1 (The red Area of the map) .*



**FIG 1 Location map of EL27041**

### 3.0 LICENCE DETAILS

*EL27041 consists of 8 sub-blocks, and was granted to China Australia Land Resources Pty Ltd on 5th August 2015 for a period of two years. Licence details for EL27041 are outlined in Table 1 below.*

**Table 1: Licence Details for EL27041**

Name	Status	Grant Date	Expiry Date	Current Blocks	Area (sq km)	Holder	Percentage
EL27041	granted	052/08/2015	01/06/2017	8	26.67	CALR	100

#### 4.0 PHYSIOGRAPHY

*The tenement area lies in the western parts of the Pine Creek Inlier (Litchfield Province) and is considered to have good potential for magmatic Cu-Ni mineralisation related to the Wangi Basics. The Litchfield Province is the continuation of the prospective Halls Creek Province of the Kimberleys, a known significant magmatic Cu-Ni province.*

#### 5.0 PREVIOUS EXPLORATION

*Previous exploration was carried out by:*

*Planet Gold during 1969-1970 for uranium, gold and base metals.*

*Carpentaria Exploration Company during 1985-1991 for gold and base metals.*

*Tipperary Mining with Mobil Energy Minerals during 1992-1995 for uranium and base metals.*

*Corporate Developments in the mid to late 1990's for gold and base metals.*

*There are several mineral occurrences within the EL as listed in the NTGS MODAT*

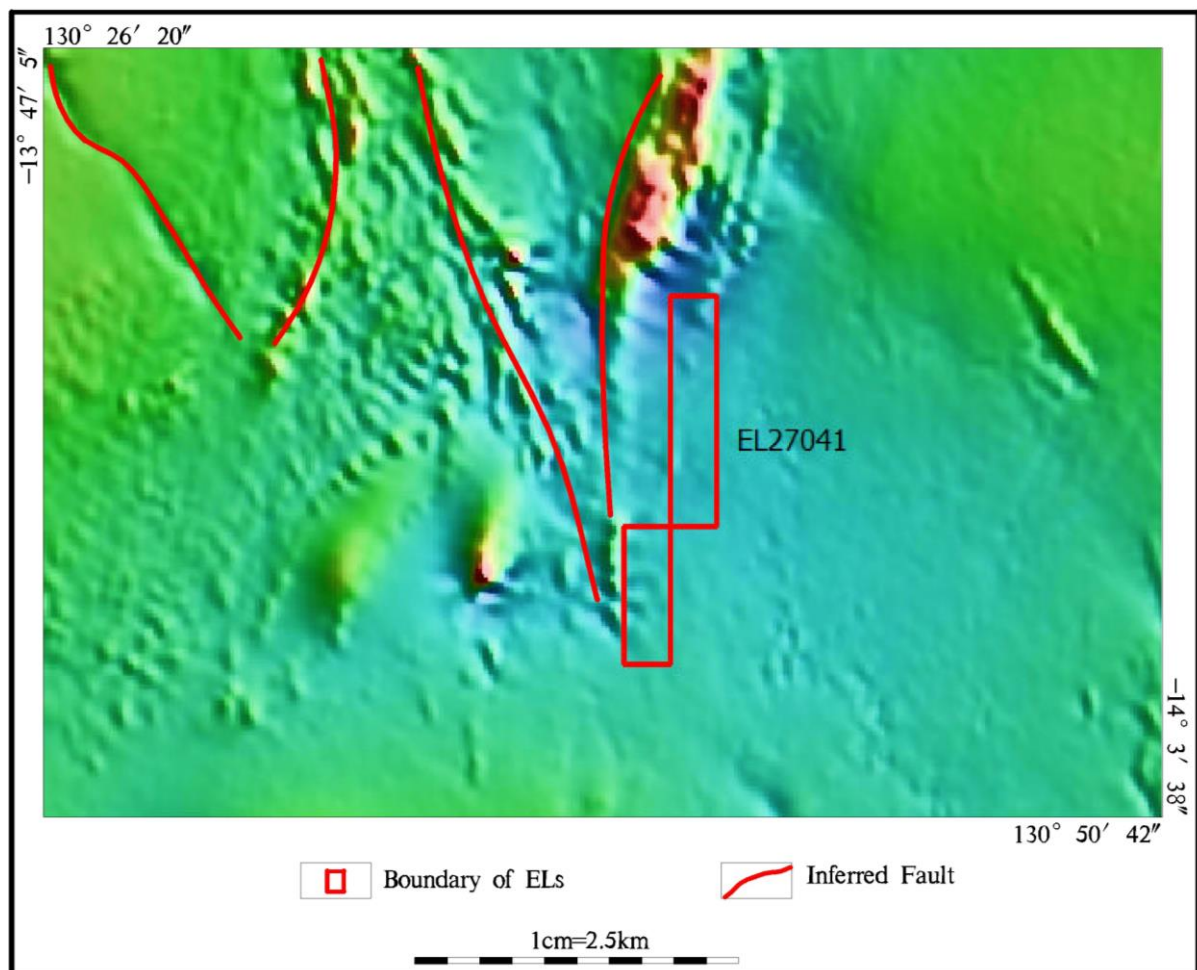
database.

The mineral commodities considered were gold, base metals and uranium.

**6.0 EXPLORATION COMPLETED DURING CURRENT REPORTING**

**PERIOD**

During 2015 to 2016 , according to the shift of the work focus and staff, CALR did not carry out any outside exploration workload except some study of TMI completed in office, and found no positive information.





**Fig2 Magnetic TMI abnormal of EL27041****7.0 EXPENDITURE STATEMENT**

*Exploration expenditure on the tenement from 2 June 2014 to 1 June 2015 totally was \$ 2000.*

**8.0 PROPOSED PROGRAMME AND BUDGET FOR NEXT YEAR**

*The proposed program will focus on gold, Uranium, base metals exploration and include the collection and processing of about 130 rock chip samples to increase the sample density to adequately assess the potential for the presence of gold, Uranium, base metals etc.*

<b>ACTIVITY DETAILS FOR THE NEXT REPORTING PERIOD</b>		
<b>Admissible Expenditure</b>	<b>Specify the work to be undertaken</b>	<b>\$AU Proposed</b>
A. Geological Activities and Prospecting	XRF130	14000
B. Geochemical Activities		
C. Geophysical and Remote Sensing Activities		
D. Drilling		
E. Bulk Sampling and Earthworks		
F. Rehabilitation		
G. Pre-feasibility inc. Metallurgical and Environmental		

H. Office Studies		2,000
I. Overheads (not to exceed 15% of the sum of A to H above)		
J. Covenant for next reporting period		

## 9.0 REFERENCES

*Edgoose CJ, Fahey GM and Fahey JE, 1989: Moyle 4969, 1:100 000 Geological Map Series, Explanatory Notes. NT Department of Mines And Energy, Darwin.*

*Edgoose CJ, Fahey GM and Fahey JE, 1989: Wingate Mountains 5069, 1:100 000 Geological Map Series, Explanatory Notes. NT Department of Mines And Energy, Darwin.*