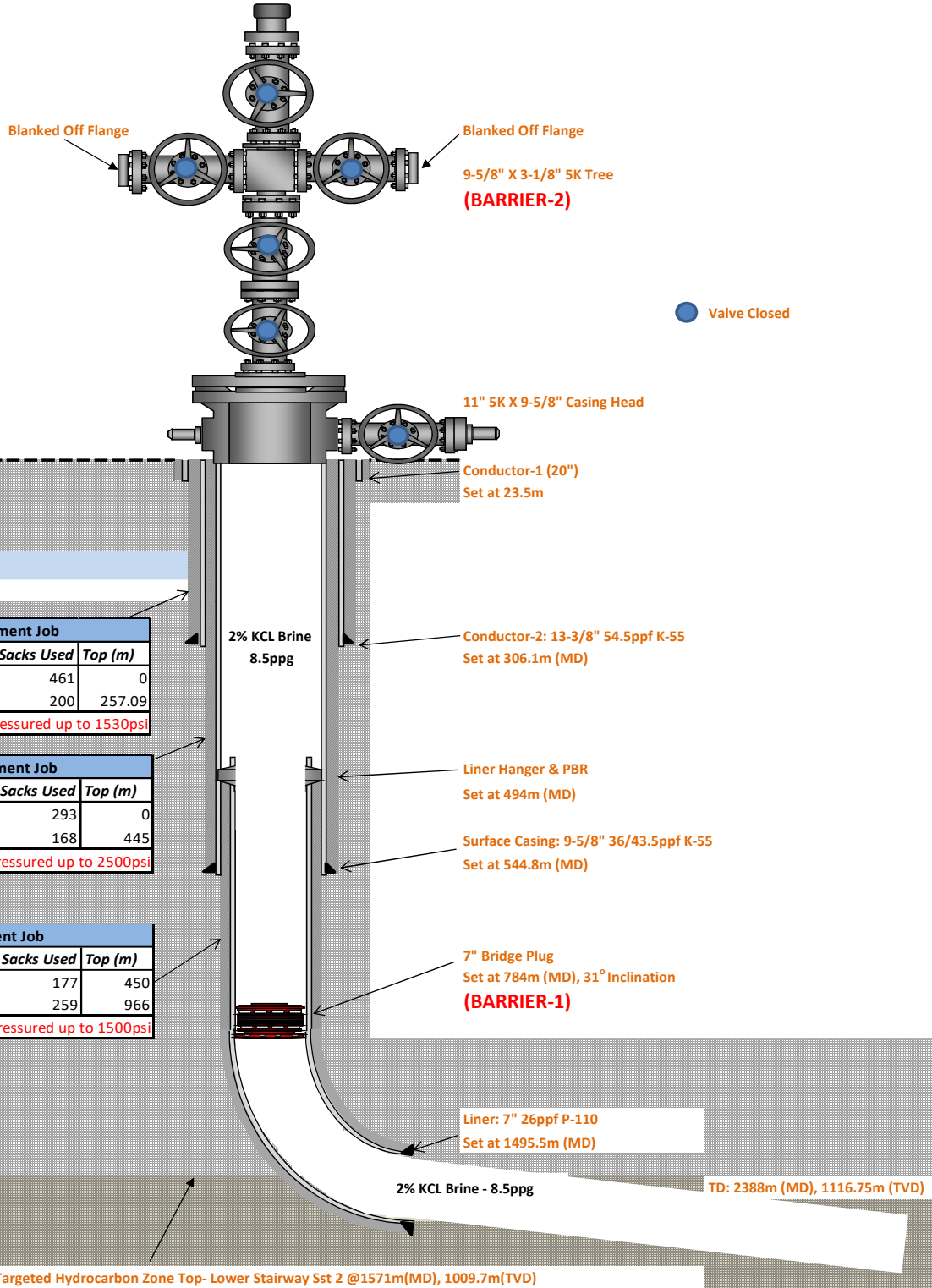


WEST MEREENIE-26 FINAL SUSPENSION DIAGRAM



Mereenie Aquifer

Estimated Top @ ~209m

13-3/8" Cement Job

Cement	Weight (ppg)	Sacks Used	Top (m)
Lead	12.5	461	0
Tail	15.8	200	257.09

Bump Plug: @ 600psi, Pressured up to 1530psi

9-5/8" Cement Job

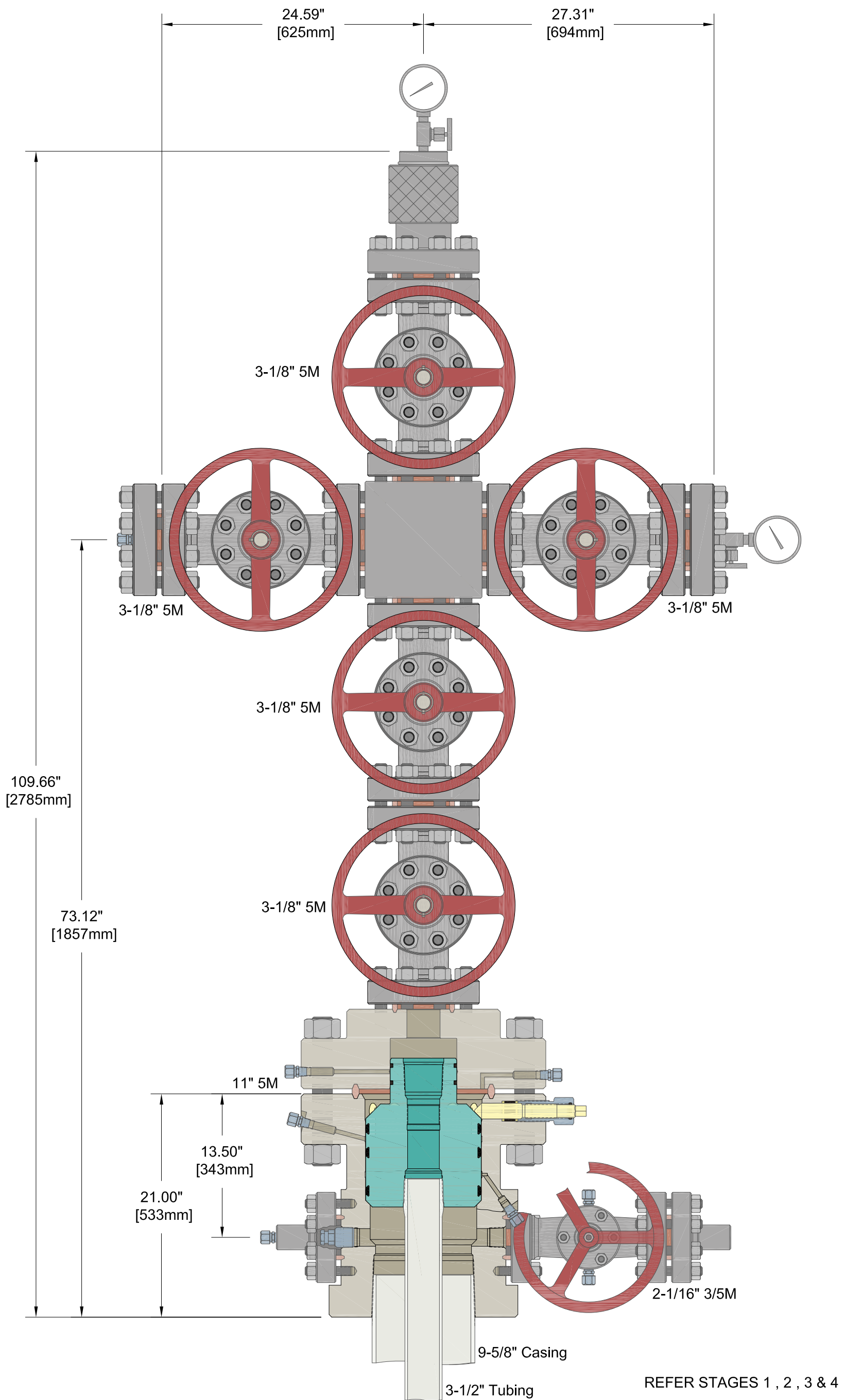
Cement	Weight (ppg)	Sacks Used	Top (m)
Lead	12.5	293	0
Tail	16	168	445

Bump Plug: @ 700psi, Pressured up to 2500psi

7" Cement Job

Cement	Weight (ppg)	Sacks Used	Top (m)
Lead	13.5	177	450
Tail	15.8	259	966

Bump Plug: @ 975psi, Pressured up to 1500psi



INFORMATION CONTAINED HEREIN IS THE PROPERTY OF CACTUS WELLHEAD, LLC. REPRODUCTION, DISCLOSURE, OR USE THEREOF IS PERMISSIBLE ONLY AS PROVIDED BY CONTRACT OR AS EXPRESSLY AUTHORIZED BY CACTUS WELLHEAD, LLC.

CACTUS WELLHEAD LLC		Central Petroleum	
9-5/8" x 3-1/2" Production Wellhead		DRAWN	AES
11" 5M CTH-P Casing Head x 9-5/8" BC		APPRV	
CTH-EN Tubing Hanger With 3 Dovetail Seals		DRAWING NO.	CWP-000091J
			09NOV17