

### EARLY PROTEROZOIC GRANITOIDS

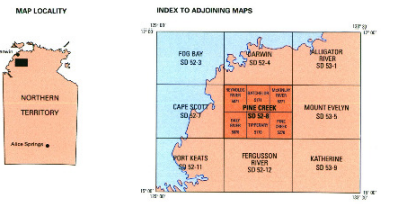
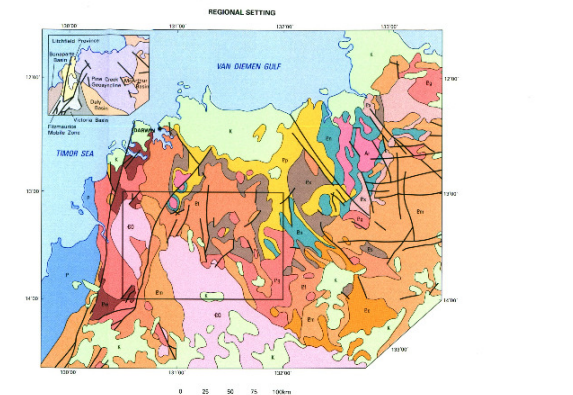
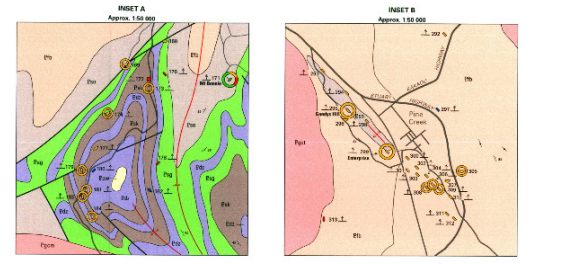
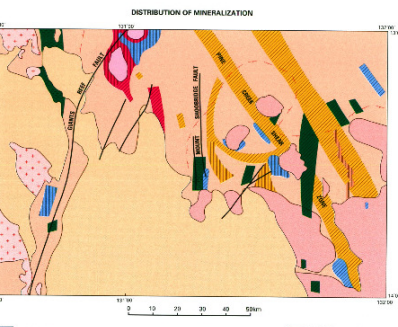
Symbols in alphabetical order

#### PREDOMINANTLY I-TYPE

Eg1	Allanby Springs Granite	Pink, medium, predominantly equigranular biotite-hornblende granite
Eg2	Burness Granite	Light grey, fine to medium, porphyritic to equigranular biotite granite, moderately foliated
Eg3	McCarty Granite	Light grey to light grey, medium to coarse, porphyritic, biotite - hornblende granite
Eg4	Drifted Granite	Pink, medium to coarse, porphyritic to equigranular biotite granite
Eg5	Fingertop Granitoid	Light pink, medium to coarse, biotite-hornblende granitoid, porphyritic to microgranular
Eg6	Margaret Granite	Light grey to pink, medium to coarse porphyritic to equigranular, biotite-hornblende granite
Eg7	Blooming Granite	Dark grey to black, mainly porphyritic, biotite-hornblende granite with mafic margins
Eg8	Mingo Granite	Pink, medium to coarse, predominantly porphyritic - biotite hornblende granite
Eg9	Melba Granite	Light grey, medium to coarse, biotite-hornblende granite, predominantly microgranular
Eg10	McIntyre Bluff Granite	Pink, coarse, predominantly porphyritic, biotite-hornblende granite
Eg11	Foster Granite	Light grey to pink, medium to coarse, porphyritic biotite-hornblende granite, whereas at places partly foliated
Eg12	Douglas Granite	Light grey, fine to medium, porphyritic, biotite-hornblende granite
Eg13	Rose Spring Granite	Light grey, fine to medium, porphyritic to equigranular, biotite-hornblende granite
Eg14	Freesees Creek Granite	Light grey, fine to medium, porphyritic to equigranular biotite granite
Eg15	Sawyers Granite	Pink to light grey, fine to medium, predominantly equigranular mafic to felsic hornblende biotite granite
Eg16	Talbot Granite	Pink to red grey, fine to coarse, porphyritic to equigranular, felsic biotite-hornblende granite
Eg17	Underwood Granite	Light grey to pink, medium, porphyritic to equigranular, biotite-hornblende granite
Eg18	Bonwick Granite	Pink, fine to medium, porphyritic to equigranular, biotite granite
Eg19	Blyth Massif	Light grey to pink, fine to medium, quartz monzonitic, microcline, mafic to felsic biotite and quartz syenite

#### PREDOMINANTLY S-TYPE

Fg1	Fish Bluffing Granite	Light grey to pink, fine to coarse, mainly equigranular, partly foliated granite
Fg2	Larsonne Granite	Light grey, medium, porphyritic but predominantly equigranular, biotite muscovite granite and gneiss
Fg3	Muir Hill/Glen Granite	Light grey to pink, biotite, muscovite granite, granitoid, non-foliated to moderately foliated granite with intermediate to fine grained and gneiss
Fg4	Mura-Kamogee Granitoid	Light grey, medium, variable foliated biotite granite and granitoid
Fg5	Wendy Hill Granite	Light grey to pink, medium to coarse biotite granite
Fg6	Two Sisters Granite	Light grey, granitic, granitoid, characterized by numerous muscovite porphyroclasts, garnet in places



Geology: 1987 by G. W. D'Almeida and G. M. Pittgraves  
 1987 by P. D. Blain, R. S. Newell, J. A. Wallace and M. G. Beatty  
 1987 by J. L. Dunne, C. J. Egecock, G. M. Farley and J. F. Farley  
 1987 by R. S. Blain, R. S. Newell, J. A. Wallace and D. A. Wallace  
 1987 by R. S. Newell  
 1995 by P. D. Blain, R. S. Newell, C. A. Muijs and S. H. Hickey

Modified and compiled: 1991 by M. Alward, A. J. Wynn, P. A. Forster and Z. U. Bawin  
 1992 by R. D. Fyfe, J. Cook, K. A. Greig  
 Geology: 1992 by Australian Geological Survey Organisation  
 Printed: 1993 by Mercury Press, Victoria, Australia

Published by the Department of Mines and Energy  
 under the authority of the Minister for Mines and Energy  
 The Honorable Edward L. Stone, M.L.A.  
 Base map derived from Royal Australian Survey Corps maps 1988