

NORTHERN MINING LIMITED

Figure 2: Total Magnetic Intensity (prelim)
for EL24438.

GDA94 OCTOBER 2010

previous ground magnetic survey
over Stokes Yard Zn-Pb-Ag-Cu prospect

208000 m

206000 m

204000 m

202000 m

200000 m

7409000 m

7407000 m

7405000 m

7409000 m

7407000 m

7405000 m

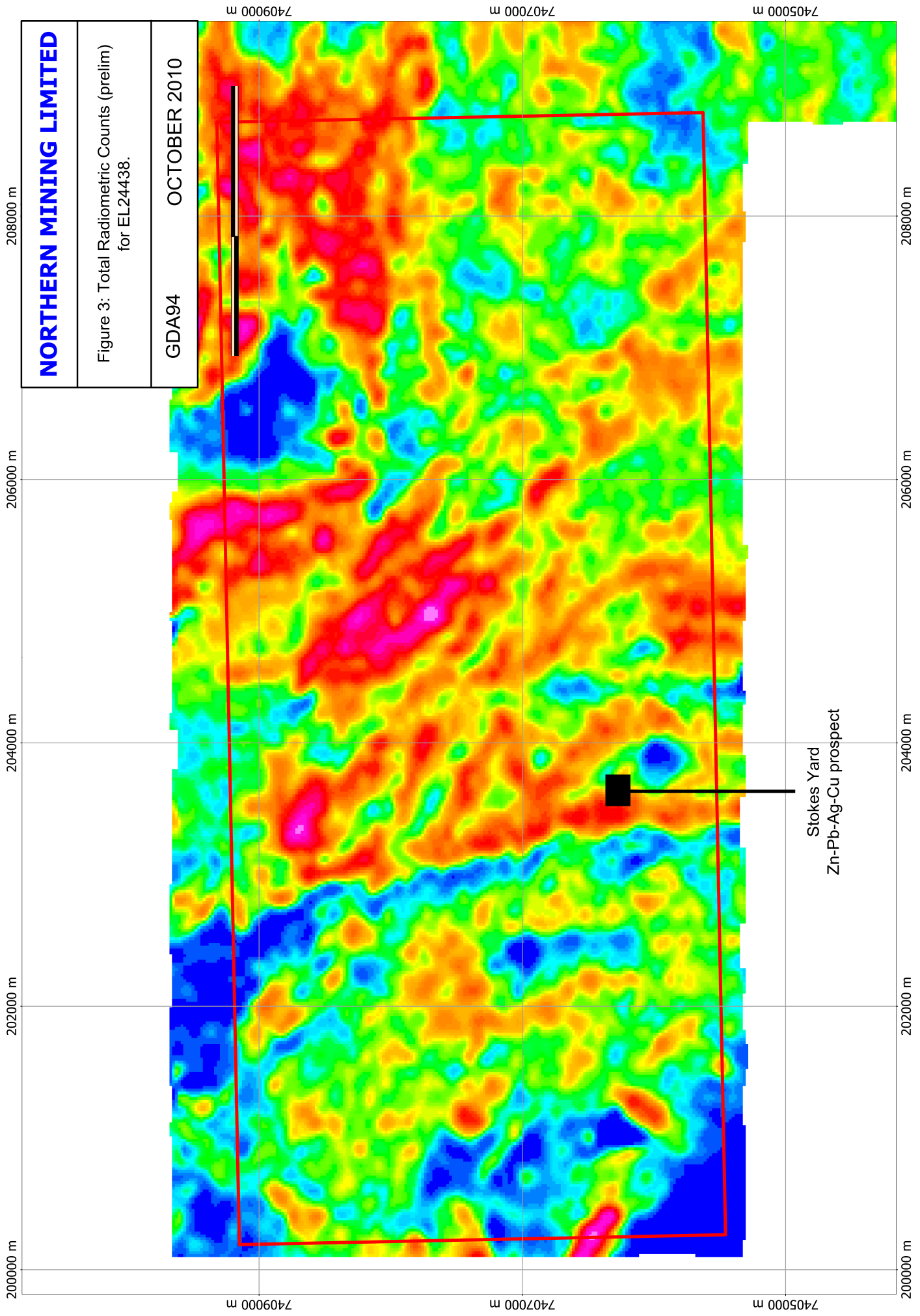
208000 m

206000 m

204000 m

202000 m

200000 m



NORTHERN MINING LIMITED

Figure 3: Total Radiometric Counts (prelim) for EL24438.

GDA94 OCTOBER 2010

Stokes Yard
Zn-Pb-Ag-Cu prospect

7405000 m 7407000 m 7409000 m

200000 m 202000 m 204000 m 206000 m 208000 m