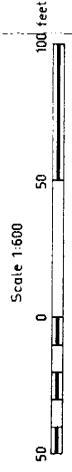


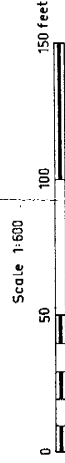
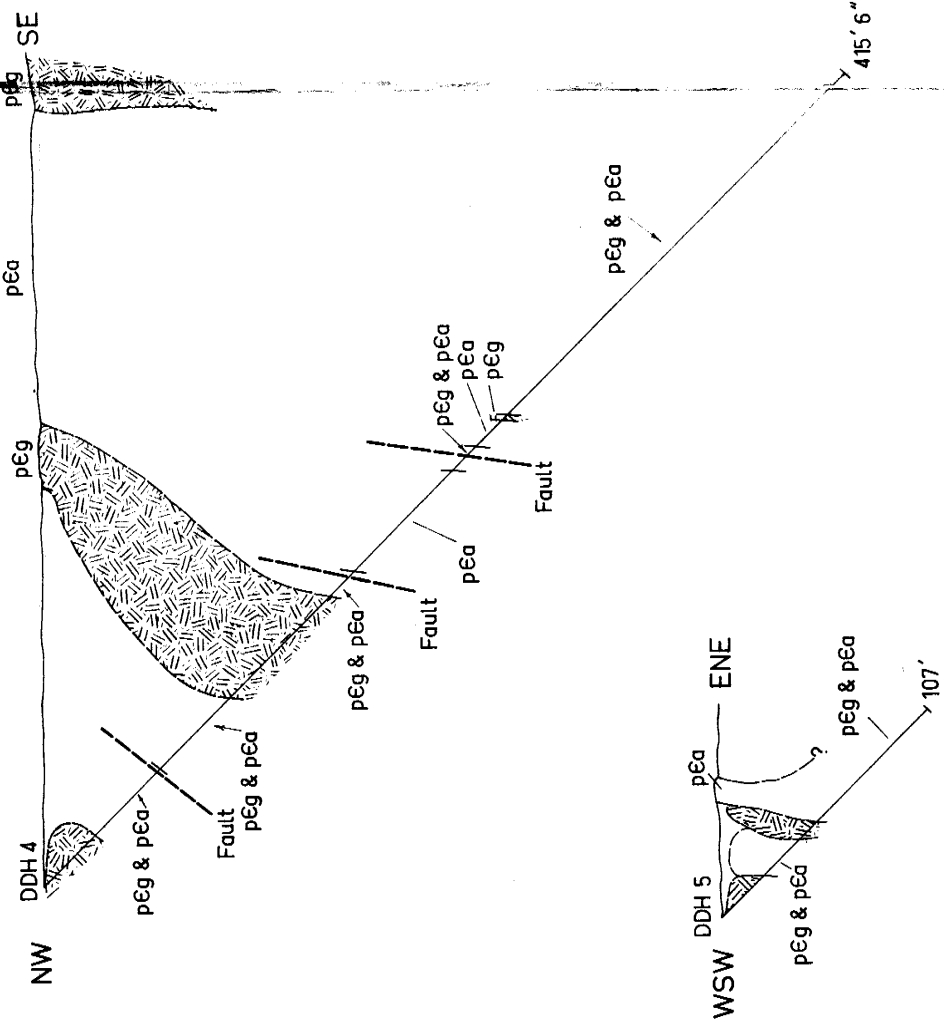
**THE STOKES YARD BASE METAL PROSPECT  
SECTIONS FOR DIAMOND DRILL HOLES 1, 2 AND 3**




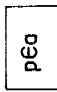
REFERENCE

-  Granite-gneiss
-  Amphibolite
-  Calcilicite rock

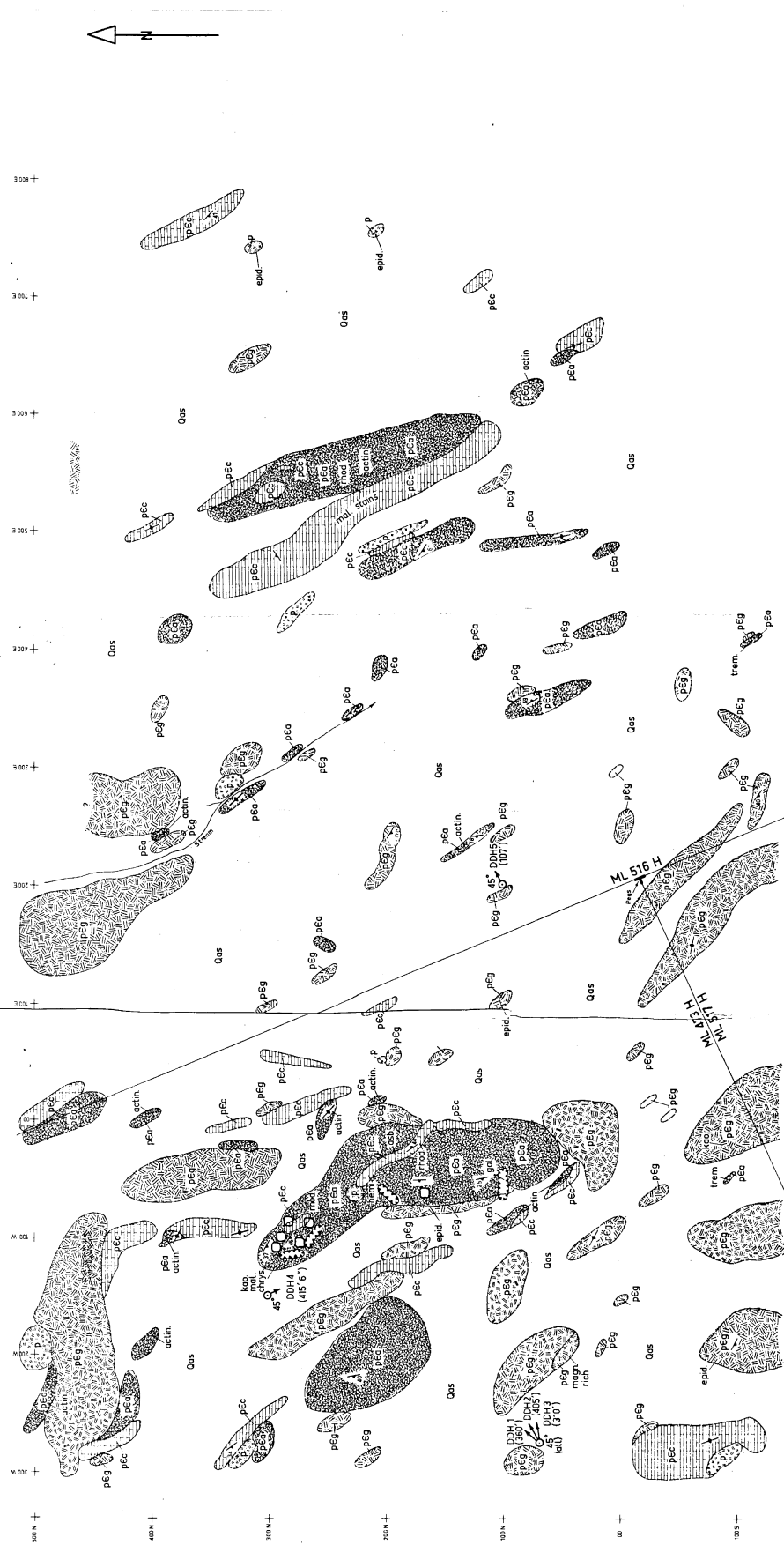
# THE STOKES YARD BASE METAL PROSPECT SECTIONS FOR DIAMOND DRILL HOLES 4 AND 5



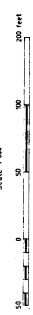
### REFERENCE

-  pEg  
Granite - gneiss
-  pEa  
Amphibolite

CS22115



**THE STOKES YARD BASE METAL PROSPECT**  
**SURFACE GEOLOGY**



	Magnetite-granite-gneiss
	Banded gneiss
	Calcicite rock,
	Olivine-Marble
	Amphibolite, Actinolite-Tremolite schist
	Pegmatite
	Alluvium, windblown sand
	Quaternary

	Strike and dip of foliation
	Foliation, vertical
	Approximate geological boundary
	Trench, pit
	Least boundary
	DDH5 Diamond drill-hole location, showing direction, inclination and total depth

actin actinolite  
asb asbestos  
chrys chrysocolla  
epid epidote  
gal galena  
herm hemimorphite  
kaol kaolinite  
mal malachite

magn magnetite  
rhod rhodnite  
trem tremolite

Note: Survey carried out using tape and compass with reference made to existing C.G.G.'s grid  
Acknowledgement: Data provided by Mr. S. Griffiths, Leeseholder, is included in this map.