

Kentor Minerals (NT) Pty. Ltd.

(a wholly owned subsidiary of KGL Resources Ltd.)

ML30182

Jervois Project

Annual Report

for the reporting period

25 March 2014 to 26 March 2015

Project Name: Jervois

Map Sheets: Hukkitta SF53-11, 1:250,000

Commodities: Copper, Silver, Lead, Zinc

Licensee: Jinka Minerals Ltd.

Author: R. Lennartz

Date: May 2015

This document and its content are the copyright of Kentor Minerals (NT). The document has been written for submission to the Northern Territory Department of Mines and Energy as part of the tenement reporting requirements as per the Mineral Titles Act (NT). Any information included in the report that originates from historical reports or other sources is listed in the "Bibliography" section at the end of the document. All relevant authorisations and consents have been obtained.

Kentor Minerals (NT) authorises the department to copy and distribute the report and associated data.

CONTENTS

1.0 INTRODUCTION..... 3

2.0 LOCATION and ACCESS..... 3

3.0 TENURE..... 5

4.0 WORK DONE DURING THE YEAR 5

5.0 CONCLUSION 7

Figure 1. Jervois Project - Location plan 4

Figure 2. ML30182 Location plan 6

1.0 INTRODUCTION

Kentor Gold Limited, a Brisbane based company, purchased Jinka Minerals and all its assets in early 2011 from Reward Minerals Limited.

The Operating Company is Kentor Minerals (NT) Pty. Ltd. All tenements reported on are held by Jinka Minerals Ltd.

Mineral Lease 30182 replaces Mineral Claims S 13, 14, 15, 16, 17, 18, 19, 20, 21, 22, 23, 24, 25, 26, 27, 28, Minerals Leases S 10, 16, 17, 23, 51, 52, 53, 54, 55, 56, 57, 61, 62, 90 and Mineral Lease 30179.

2.0 LOCATION and ACCESS

The Jervois Project is located 380 kilometres north east of Alice Springs on the Huckitta 1:250,000 map sheet (SF53 -11), and surrounds Mineral Licences ML30180 and ML30182 which cover the gossanous outcrop of the Jervois Mine and its extensions (See Figure 1).

Access is via the Stuart and Plenty Highways to the Lucy Creek Station Road, with the tenement located approximately 20km north of this turn off. Historical exploration and mine tracks, as well as limited station tracks provide local access throughout the tenement which is located over a portion of the Jervois Pastoral Lease (NT Por 366).

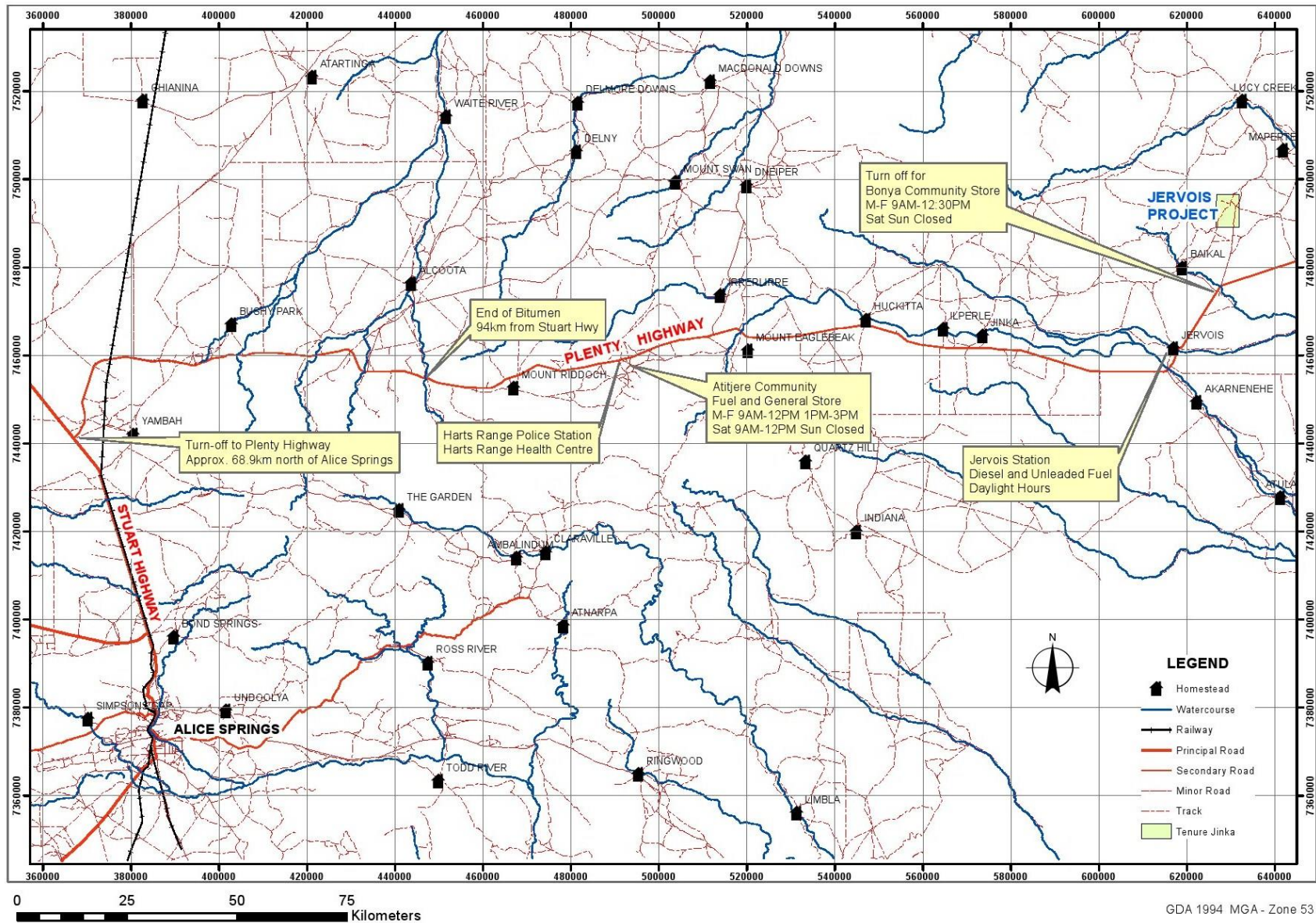


Figure 1. Jervois Project - Location plan

3.0 TENURE

A Notice of Intention to Issue a Replacement Title dated 21st March 2014 was issued to Jinka Minerals Limited.

Mineral Lease 30182 was issued for all of the area of land defined in the First and Second Schedules for a term of sixteen years.

Mineral Lease 30182 replaces Mineral Claims S 13, 14, 15, 16, 17, 18, 19, 20, 21, 22, 23, 24, 25, 26, 27, 28, Mineral Leases S 10, 16, 17, 23, 51, 52, 53, 54, 55, 56, 57, 61, 62, 90 and Mineral Lease 30179.

The grant date of ML30182 was 26/03/2014.

Figure 2. Represents a plan of the tenement layout at the Jervois Project.

4.0 WORK DONE DURING THE YEAR

There was extensive mineral exploration undertaken within ML30182, during the reporting period.

The work undertaken within ML30182 has been reported in:

EL25429 - Jervois Project

Annual Report

for the reporting period

2 February 2014 to 1 February 2015

Five (5) Appendix attachments associated with the report, containing data and documentation, were submitted with the EL25429 Annual Report on 23rd March 2015.

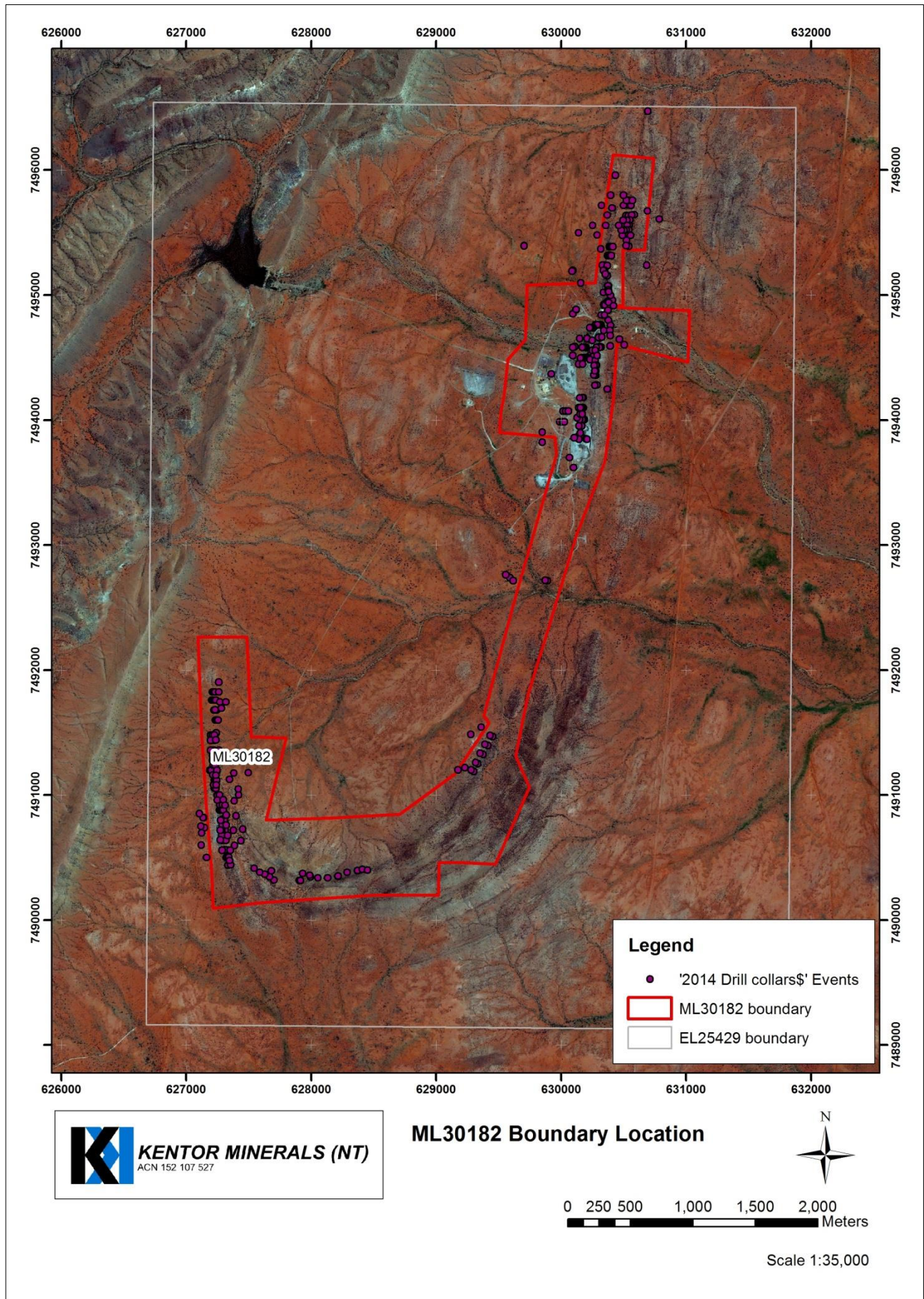


Figure 2. ML30182 Location plan

5.0 CONCLUSION

It is anticipated that no production activities will be undertaken within ML30182 within the next reporting period.

Unless our situation changes, in the next few years all exploration and development activities, that occur on ML30182, will be associated with activities undertaken on ML25429.

Kentor Minerals (NT) is optimistic that production activity on ML30182 will commence in the future.

All activity, expenditure and future development activities scheduled to be undertaken on ML30182 have been recorded with the submission of the EL25429 Annual Report for the reporting period 2 February 2014 to 1 February 2015.