

Technical Reporting

Tenure:	ML 29938
Group Report ID:	N/A
Title:	ML 29938 Annual Report
Report Period:	13/02/2017 to 12/02/2018
Project Name:	ML 29938
Title Holder:	Yogi Griesbach (10%), Dale N Page (10%), OZ Uranium (80%)
Title Operator:	Bevan James Griesbach (Yogi)
Personal Author:	Ms Sally Horsnell
Report Type:	Annual Report
250K Mapsheet/s:	Pine Creek (SD5208)
100K Mapsheet/s:	McKinlay River (Map Number 5271)
Geological Province:	Pine Creek Orogen
Stratigraphic Name:	Finniss River Group
Target Commodity:	Gold
Other Commodities:	N/A
Purpose for which Titles are held:	Alluvial gold mining

Title history:

ML29938 covers an area of 20 hectares and was granted to Yogi Griesbach (10%), Dale N Page (10%), OZ Uranium (80%) on the 13th February 2014 for a period of 10 years and expires on the 12/02/2024. ML29938 is located approximately 160km south of Darwin.

Bevan James Griesbach (Yogi) was the nominated Operator for ML29938 during this reporting period for the small scale open cut alluvial operation approved under Authorisation 0917-01.

Location, physiography and access:

ML29938 is located on Perpetual Pastoral Lease 1217, Douglas Station. The tenement is located 40km south of Adelaide River Township along the Stuart Highway. Access is gained 18km along the Fountain Head Road where an unsealed track is located east just before the first Yam Creek Crossing. There is an unsealed track to the tenement. Road access is usually all season however temporary road closures may along the Fountain Head during heavy rainfall events within the catchment.

Major land uses in the region are described as mining, pastoralism, intensive rural, freehold blocks, horticulture and conservation. The major population centres are Batchelor, Adelaide River and Pine Creek.

ML29938 is situated within the Pine Creek Bioregion of the Northern Territory which has a tropical monsoonal climate. Around 90% of annual rainfall occurs during the wet season between November and March, with a spatially averaged median rainfall of 1214mm. Pan evaporation exceeds rainfall with an average of 2400mm per year mostly occurring from July-November. The annual average minimum and maximum temperature is 21.5-33.4 °C.

The topography of ML29938 is described as generally hilly to rugged ridges with undulating plains. Topography ranges between 125-225 metres above mean sea level (MAMSL). Land system description information is detailed in the table hereunder.

ITEM	Land System Type
Map unit	Rwg
Landscape Class	sandstone plains and rises
Class Description	plains, rises and plateaux on mostly on sandstone, siltstone, claystone, shale and some limestone; commonly shallow soils with surface stone and rock outcrop
Landform	Low rounded hills and low gravelly ridges with intervening alluvial flats
Soil origin	Lithosols on rises, yellow podzolics on alluvial areas.
Soil association	Leptic Rudosols on rises, Chromosolic Redoxic Hydrosols on alluvial areas
vegetation	Mid-high open woodland of <i>E. polysciadia</i> , <i>C. ferruginea</i> , <i>C. foelscheana</i> , <i>E. tectifera</i> , <i>Xanthostemon paradoxus</i> over <i>Chrysopogon spp</i> , <i>Sorghum spp</i> , <i>Eriachne trisetia</i>
Occurrence of acid sulphate Soils	No occurrence of acid sulphate soils

Source: <http://www.ntlis.nt.gov.au>

ML29938 is situated within the Adelaide River catchment. Site hydrological conditions consist of numerous ephemeral drains and creeks discharging to the northwest to Yam Creek and Margaret River.

Geology Setting:

ML29938 is situated in the Pine Creek Orogen geological province. The lithology class is sedimentary formed during the Proterozoic eon and Palaeoproterozoic era which covers 900 million years of earth's history. The project lies within the Finniss River Group representative stratigraphic unit and the lithology description is greywacke, shale, siltstone, and sandstone.

The region has been actively explored for a wide range of commodities including gold, uranium, base metals, PGE, iron ore, manganese, magnesite and phosphate.

Exploration/Mining History:

Historical mining activities have occurred throughout the region including the project site since the late 1800's and early 1900's, when Chinese miners worked the area for eluvial and alluvial gold.

Exploration Rationale:

Considering the location of the area is close to a host of alluvial gold deposits, I believe that there is a potential for the area to host an economic gold resource.

Work Completed:

Nil to Report

Results:

NA

Conclusions/Recommendations:

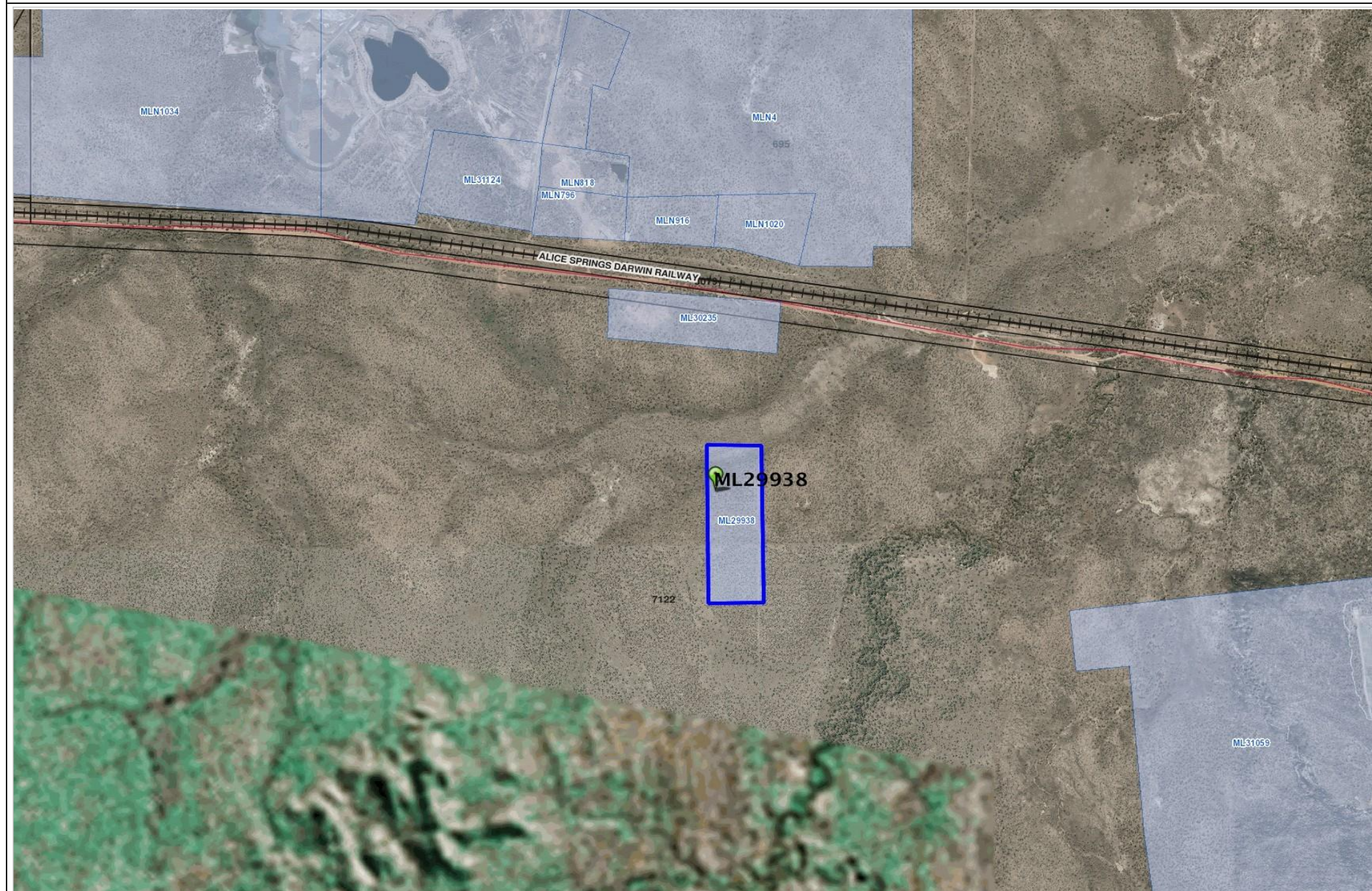
NA

Copyright Statement:

This document and its content are the copyright of B.J. Griesbach. The document has been written for submission to the Northern Territory Department of Primary Industry and Resources as part of the tenement reporting requirements as per the Mineral Titles Act (NT). I authorise the Northern Territory Department of Primary Industry and Resources to store, copy and distribute the report and associated data.

NR MAPS

ML29938 2017 Reporting



Legend
Tenement Licence - Granted



Metres 250 500 750 1,000

www.lrm.nt.gov.au/nrmaps nt



© Northern Territory of Australia
The Northern Territory of Australia does not warrant that the product or any part of it is correct or complete and will not be liable for any loss damage or injury suffered by any person as a result of its inaccuracy or incompleteness.

Created by anonymous, 09 Apr 2018

Figure 1 ML29938 2017 Reporting