

ML 29915
SAUNDERS RUSH
ANNUAL REPORT
2014

Author: Mr. Ken Padgett

Date: 28 17 114

CONTENTS

- 1. INTRODUCTION**
- 2. LOCATION AND ACCESS**
- 3. GEOLOGY - MINERALISATION**
- 4. PREVIOUS ACTIVITY AND MINING**
- 5. WORK COMPLETED**
- 6. EXPENDITURE STATEMENT**

SAUNDERS RUSH

1. INTRODUCTION

ML 29915 was granted on 4th June, 2013 for a period of five years. This area was previously MCN 931, 932. Title Holders are K.C. Padgett 25%, S.A. Padgett 25%, G.L. Wood 25% and S.M. Wood 25%. This report details work carried out in the last twelve months and the gold production.

2. LOCATION AND ACCESS

This Lease is located approximately 43km east of Pine Creek and access to the site is via the Kakadu Highway to Moline then 28km south via a bush track. The location of the turn-off from The Kakadu Highway is approximately 132 degrees 10'9.11 east 13.38'51.63 south. Attached Map A2 shows Lease location.

3. GEOLOGY AND MINERALISATION

The dominant lithologies in the area are greywacke's siltstone and mudstone of the early Proterozoic Burrell Creek Formation. The gold bearing formation of quartz and ironstone reefs are on a NW – SE Strike. The existing environment is sparsely vegetated with slightly dense Native scrubland surrounding the Lease.

4. PREVIOUS ACTIVITY AND MINING

In the late 1800's and early 1900's the Chinese mined this area for alluvial and alluvial gold. From 1983 to 1989 Wandie Gold Mines Pty Ltd mined alluvials from this area and adjacent areas. From 1989 to 1992 Ranford Gold Mines continued mining this area. From 1993 to 2014 metal detecting has been carried out on this Lease.

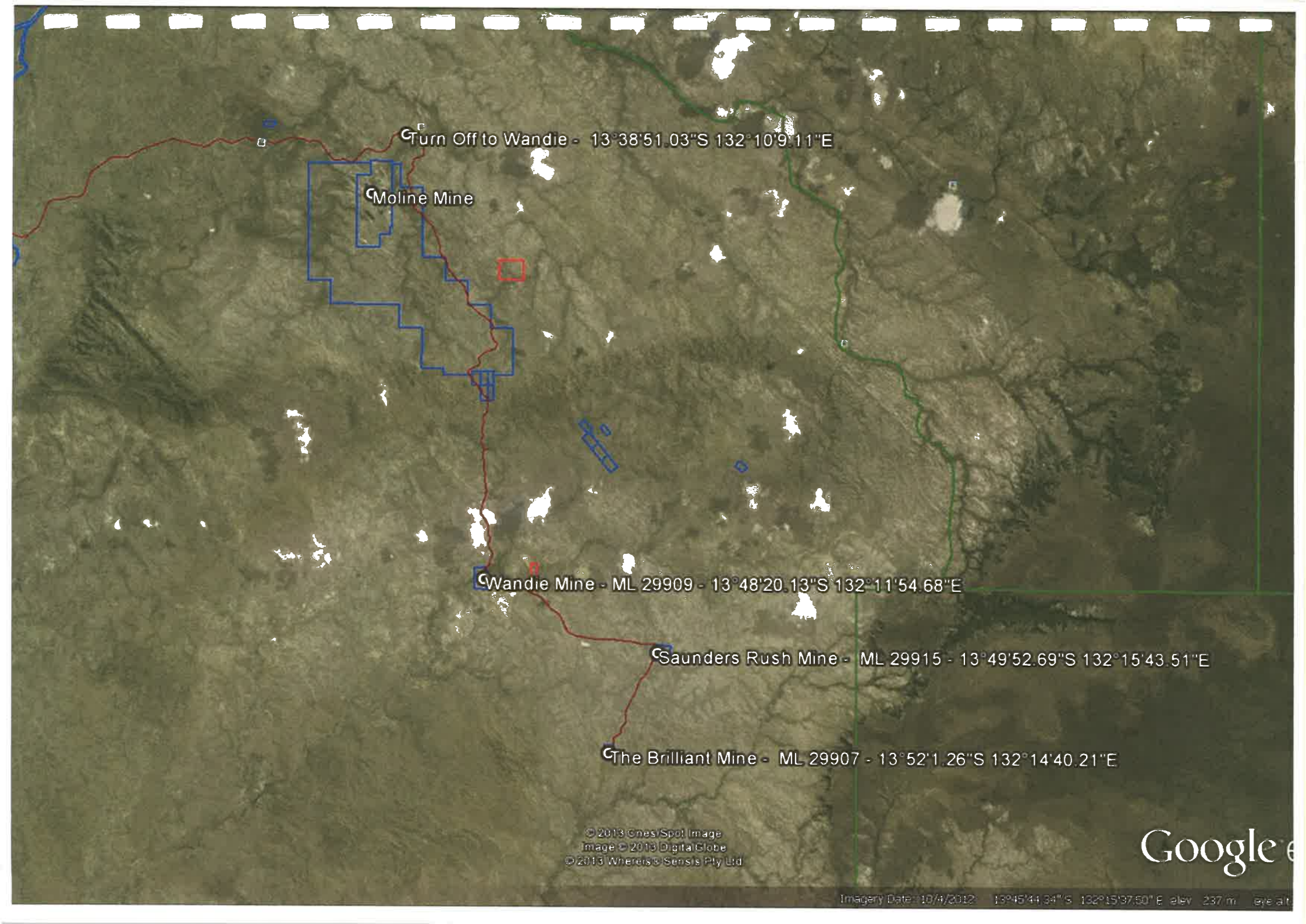
5. WORK COMPLETED

This Lease has a current Mine Management Plan Authorisation Number 0262-02. The datum peg has been updated and the other boundary pegs have been identified and updated. Metal detecting on this Lease has been carried out during the last twelve months for a recovery of 21grams of gold.

6. EXPENDITURE

Motor Vehicle Costs	\$1,500
Labour	\$2,500
Tenement Costs	\$ 760
Overheads, Office Costs datum peg Plates etc.	\$ 750

TOTAL: \$5,510



Turn Off to Wandie - 13°38'51.03"S 132°10'9.11"E

Moline Mine

Wandie Mine - ML 29909 - 13°48'20.13"S 132°11'54.68"E

Saunders Rush Mine - ML 29915 - 13°49'52.69"S 132°15'43.51"E

The Brilliant Mine - ML 29907 - 13°52'1.26"S 132°14'40.21"E

© 2013 Gnes/Spot Image
Image © 2013 DigitalGlobe
© 2013 Whereis/Sensis Pty Ltd

Google e

Imagery Date: 10/4/2012 13°45'44.94"S 132°15'37.50"E elev: 237 m eye alt: