

MANTO MINING PTY LTD

SECOND ANNUAL TECHNICAL REPORT

EXPLORATION LICENCE 28907

27 MARCH 2013 – 26 MARCH 2014

Titleholder	Manto Mining Pty Ltd
Project Operator	Manto Mining Pty Ltd
Titles/Tenements	EL 28907
Tenement Manager/Agent	AMETS
Mine/Project Name	N/A
Personal author(s)	Mingli Shao
Company reference number	N/A
Target Commodity or Commodities	Fe, Cu, Au
Date of report	14 May 2014
Datum/Zone	GDA94/Zone 53
250 000 K Mapsheet	Pine Creek SE5314
100 000 K Mapsheet	Flynn 5759
Contact details	Mingli Shao, Managing Director- Manto Mining Pty Ltd shaomingli@accge.com

Contents

1. Abstract.....	2
2. Copyright	3
3. Location and Access	3
4. Tenure and Land Use	4
5. Topography & Hydrology	4
6. Geology.....	5
7. Exploration Rationale	6
8. Previous Exploration	6
9. Exploration During Reporting Period	6
10. Conclusions and Recommendations	6
11. References.....	7
12. Appendices	7

1. Abstract

Exploration Licence 28907 (the licence) is located approximately 20km North of Tennant Creek and has an area of 217.14 square kilometres.

The area is situated within the Warramunga and Tomkinson Provinces of the Northern Territory. The Warramunga Province is highly prospective for IOCG mineralisation and is also known to host base metals and Uranium. The Tomkinson Province is known to host manganese deposits and it also has a potential to host base metal deposits. The area has long been a target for exploration and Manto Mining believe the area is highly prospective for an economic IOCG deposit.

Nil field work was conducted during the reporting period.

2. Copyright

© Manto Mining Pty Ltd 2014

This document and its contents are the copyright of Manto Mining Pty Ltd. The document is for submitting to the Department of Mines and Energy of the Northern Territory, as part of the tenement reporting requirements of the *Mineral Titles Act 2010*. Any information included in this report that originates from historical reports or other sources is listed in the 'References' section at the end of this document. Manto Mining Pty Ltd authorises the Department of Mines and Energy to copy and distribute the report and associated data.

3. Location and Access

The licence is located approximately 20km North of Tennant Creek in the Northern Territory and can be accessed from the Stuart Highway, thence via existing public roads and tracks.

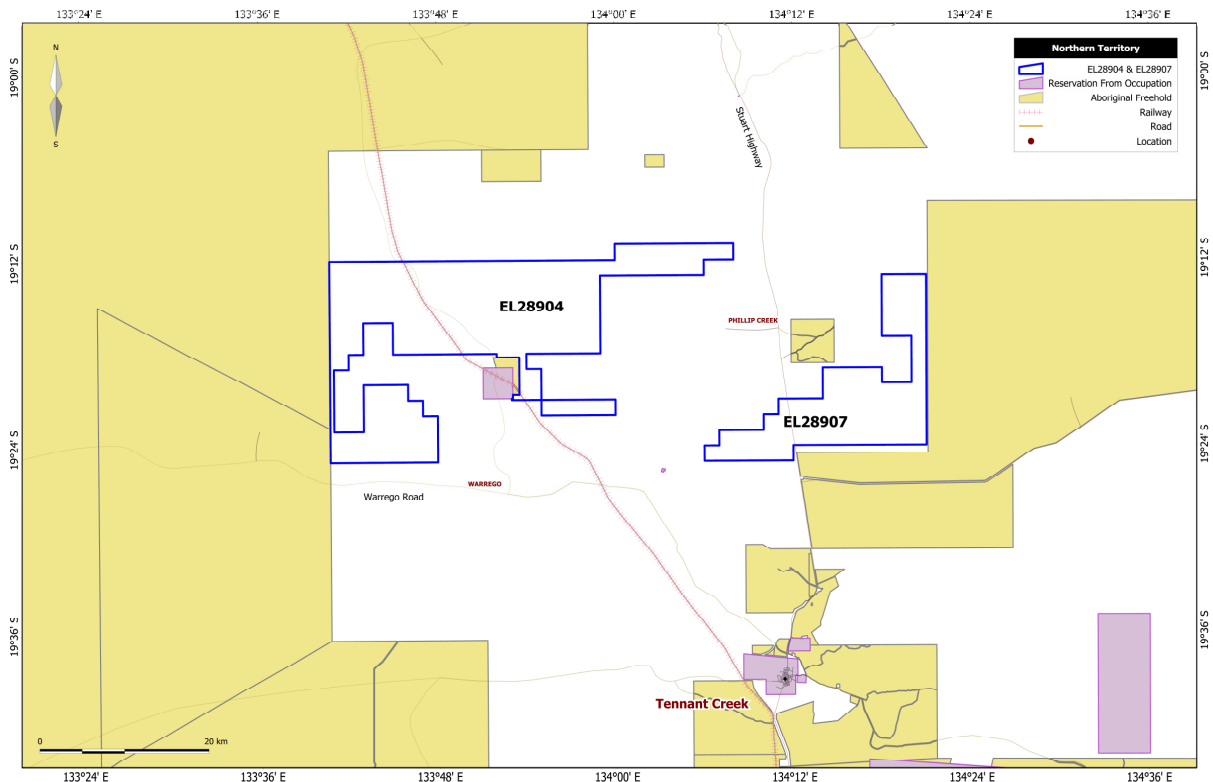


Figure 1- Location Map

4. Tenure and Land Use

Exploration Licence 28907 was granted for six years to Manto Mining Pty Ltd (Manto) on 27 March 2012 and comprised of 170 blocks (513.14 square kilometres). Manto was recently purchased by Australia China Corporation of Coal Geology Engineering Pty Ltd and Anhui Honren Co.(Group) Ltd, with the shareholding of 60% and 40%, respectively.

The licence is covered by a pastoral lease, which is identified as NT Portion 408, Perpetual Pastoral Lease 946. As at 14 May 2014 the pastoralists of this portion are recorded as Charles and Judy Warby.

5. Topography & Hydrology

The topography within the area is dominantly low, with limited outcrops. Small Creeks flow through the licence during the wet season.

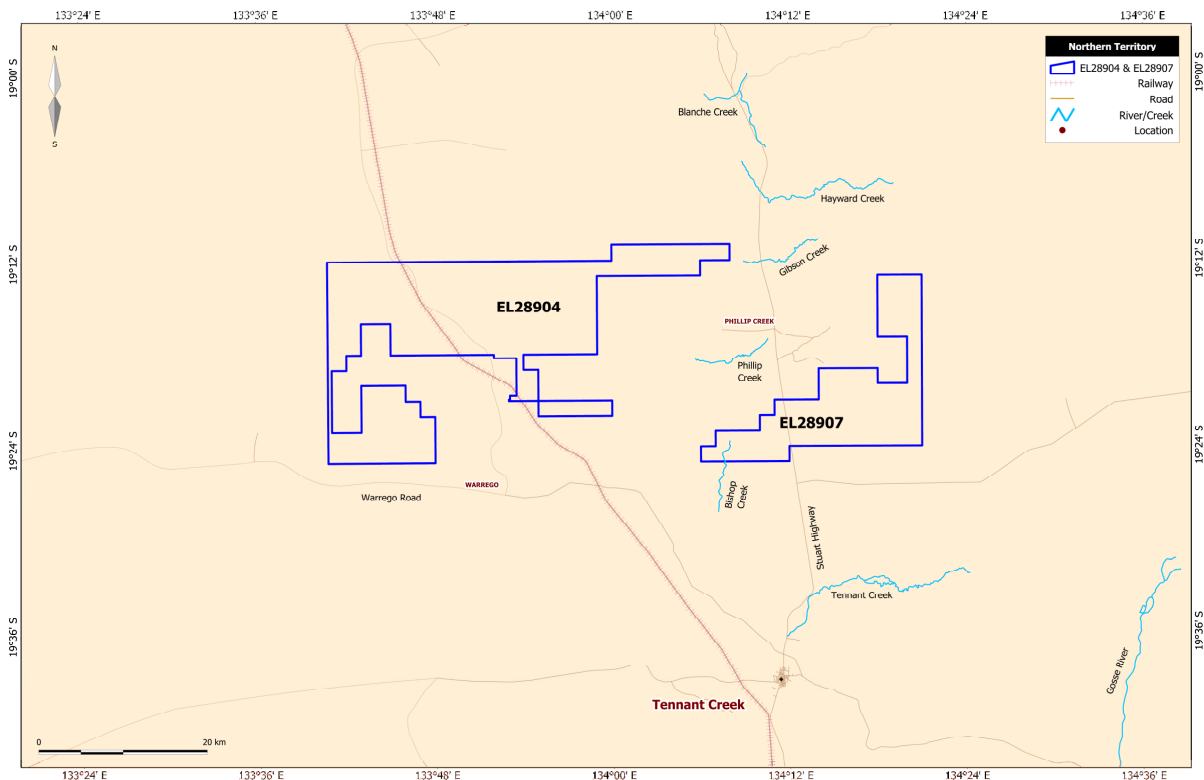
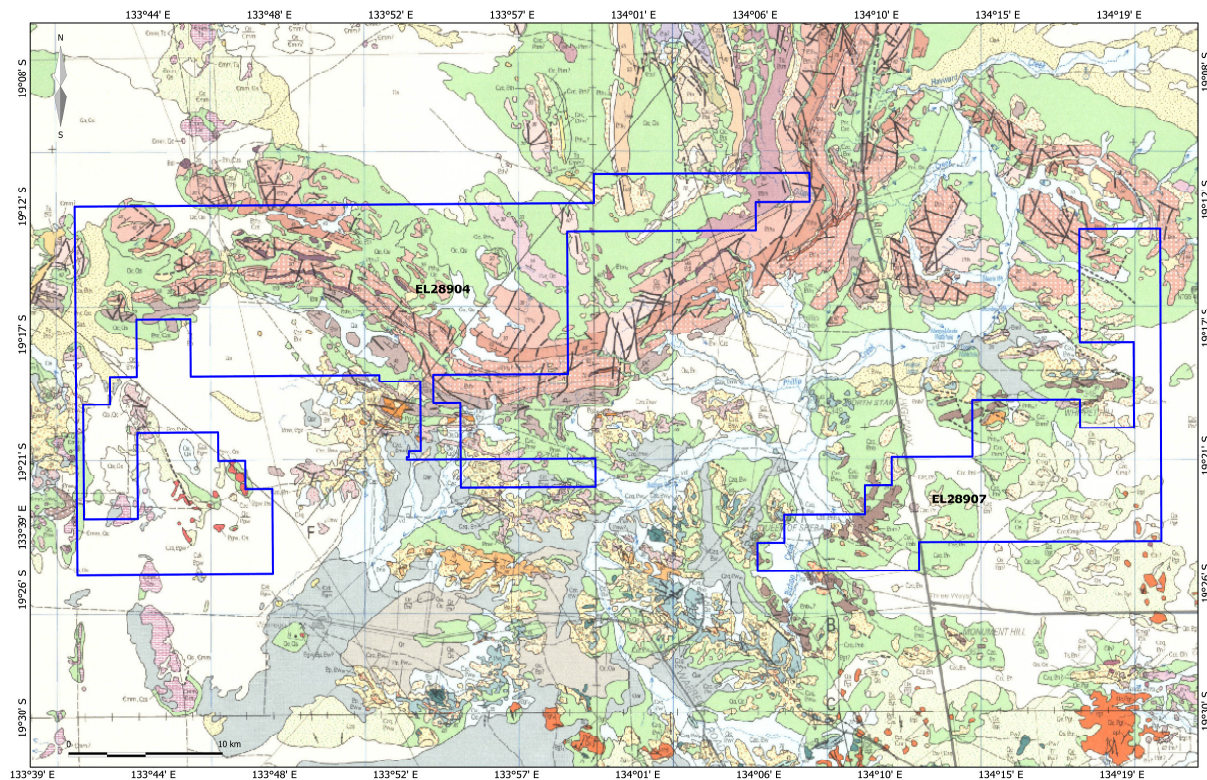


Figure 2- Topography Map

6. Geology

The licence area is situated within the Warramunga and Tomkinson Provinces within the Tennant Creek Region of the Northern Territory. The Warramunga Province consists of greywacke, shale, siltstone, sandstone, hematitic shale, granite, dolerite, basalt, dolostone and felsic volcanics. The Tomkinson Province largely comprises of sandstone, dolostone, shale and basalt.

The area is known to hosts numerous commodities which include gold, base metals, iron ore and manganese. The Tennant Creek Region is well known for IOCG mineral exploration.



Map Legend in Appendix 1

Figure 3- Geology Map

7. Exploration Rationale

The area is within the Tennant Creek Region which is well known to host significant iron ore copper gold (IOCG) gold deposits. Manto believes that there is a potential for the area to host an economic IOCG deposit.

8. Previous Exploration

Historically, within the licence area, exploration companies have explored for numerous commodities, which mainly include gold and base metals.

A historical titleholder of the area is Rum Jungle Resources Ltd (Rum Jungle). Rum Jungle explored the area for IOCGU mineralisation vein-type and unconformity-type uranium mineralisation. Rum Jungle conducted exploration within the area, which included a systematic soil/LAG sampling program. The only statistically significant results were: Grid 1 – U 8 ppm, Co 8.5 ppm, Grid 2 – Au 2 ppb (Soil), and Grid3 – Co 26 ppm, Zn 18 ppm, Pb 55 ppm. (Dunster, 2011)

9. Exploration During Reporting Period

Nil exploration works were conducted on the licence during the reporting period and therefore no data has been collected to submit to the Department of Mines and Energy.

10. Conclusions and Recommendations

Nil exploration activities were conducted during the reporting period and therefore no data was collected.

During the next reporting period (27 March 2014 to 26 March 2015), Manto intends to conduct an aeromagnetic survey and a ground high precision magnetic survey. Manto will then interpret the results and it is hoped that numerous drilling targets will be identified, so Manto can conduct a future drilling project.

11. References

C. A. Mulder, Tennant Creek, Sheet SD 53-14, second edition, scale 1:250K, Department of Mines and Energy, Mercury- Walch Pty Ltd, 1998

J. Dunster, Second annual and final surrender report for EL 27128, Three Ways, Tennant Creek, NT, Rum Jungle Resources Ltd, 2011

12. Appendices

Appendix 1- Geology Map Legend- (*C. A. Mulder*)