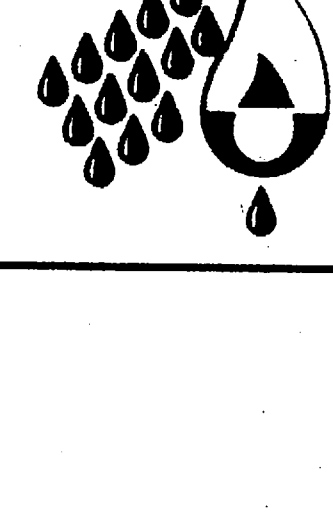


HYDROCARBON WELL LOG

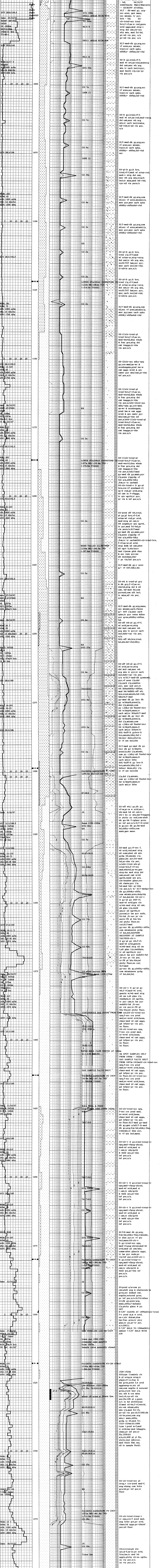
Colin Higgins & Associates



PR 8 / 33

COMPANY:	SANTOS LTD (QNTBU)	FILE:	WM13ST2
WELL:	WEST MERENIE- 13ST2	ELEVATION K.B.L.:	770.50 m
LOCATION:	OL4	ELEVATION G.L.:	764.70 m
FIELD:	MERENIE	TOTAL DEPTH:	1601.00 m
PROVINCE:	NT	CASING:	8-5/8 to 1506m, 2 3/8 tubing TD
COMMENCE LOGGING:	03/10/97	MUD SYSTEM:	AIR DRILLING
FINISH LOGGING:	18/10/97	CONTRACTOR:	MJV Rig#1
HOLE SIZE:	9-7/8 to 1506m/7-5/8 to 1601mTD		
PERSONNEL:	K Rogers, P Rose, J Leftheriou		
REMARKS:	Sidetrack from WM13 @ 1000m		
INSTRUMENTATION:	MP2100/HFC/SONIC PVT/ALLGAS		

ALL LITHOLOGIC SYMBOLS ARE CAN-STRAT COMPATIBLE



DATE	TIME	WOB	RPM	AIR	INJ	SPP
03/10/97	08:15	150	70	2400	15	1800
03/10/97	09:15	150	70	2400	15	1800
03/10/97	10:15	150	70	2400	15	1800
03/10/97	11:15	150	70	2400	15	1800
03/10/97	12:15	150	70	2400	15	1800
03/10/97	13:15	150	70	2400	15	1800
03/10/97	14:15	150	70	2400	15	1800
03/10/97	15:15	150	70	2400	15	1800
03/10/97	16:15	150	70	2400	15	1800
03/10/97	17:15	150	70	2400	15	1800
03/10/97	18:15	150	70	2400	15	1800
03/10/97	19:15	150	70	2400	15	1800
03/10/97	20:15	150	70	2400	15	1800
03/10/97	21:15	150	70	2400	15	1800
03/10/97	22:15	150	70	2400	15	1800
03/10/97	23:15	150	70	2400	15	1800
03/10/97	00:15	150	70	2400	15	1800
03/10/97	01:15	150	70	2400	15	1800
03/10/97	02:15	150	70	2400	15	1800
03/10/97	03:15	150	70	2400	15	1800
03/10/97	04:15	150	70	2400	15	1800
03/10/97	05:15	150	70	2400	15	1800
03/10/97	06:15	150	70	2400	15	1800
03/10/97	07:15	150	70	2400	15	1800
03/10/97	08:15	150	70	2400	15	1800
03/10/97	09:15	150	70	2400	15	1800
03/10/97	10:15	150	70	2400	15	1800
03/10/97	11:15	150	70	2400	15	1800
03/10/97	12:15	150	70	2400	15	1800
03/10/97	13:15	150	70	2400	15	1800
03/10/97	14:15	150	70	2400	15	1800
03/10/97	15:15	150	70	2400	15	1800
03/10/97	16:15	150	70	2400	15	1800
03/10/97	17:15	150	70	2400	15	1800
03/10/97	18:15	150	70	2400	15	1800
03/10/97	19:15	150	70	2400	15	1800
03/10/97	20:15	150	70	2400	15	1800
03/10/97	21:15	150	70	2400	15	1800
03/10/97	22:15	150	70	2400	15	1800
03/10/97	23:15	150	70	2400	15	1800
03/10/97	00:15	150	70	2400	15	1800
03/10/97	01:15	150	70	2400	15	1800
03/10/97	02:15	150	70	2400	15	1800
03/10/97	03:15	150	70	2400	15	1800
03/10/97	04:15	150	70	2400	15	1800
03/10/97	05:15	150	70	2400	15	1800
03/10/97	06:15	150	70	2400	15	1800
03/10/97	07:15	150	70	2400	15	1800
03/10/97	08:15	150	70	2400	15	1800
03/10/97	09:15	150	70	2400	15	1800
03/10/97	10:15	150	70	2400	15	1800
03/10/97	11:15	150	70	2400	15	1800
03/10/97	12:15	150	70	2400	15	1800
03/10/97	13:15	150	70	2400	15	1800
03/10/97	14:15	150	70	2400	15	1800
03/10/97	15:15	150	70	2400	15	1800
03/10/97	16:15	150	70	2400	15	1800
03/10/97	17:15	150	70	2400	15	1800
03/10/97	18:15	150	70	2400	15	1800
03/10/97	19:15	150	70	2400	15	1800
03/10/97	20:15	150	70	2400	15	1800
03/10/97	21:15	150	70	2400	15	1800
03/10/97	22:15	150	70	2400	15	1800
03/10/97	23:15	150	70	2400	15	1800
03/10/97	00:15	150	70	2400	15	1800
03/10/97	01:15	150	70	2400	15	1800
03/10/97	02:15	150	70	2400	15	1800
03/10/97	03:15	150	70	2400	15	1800
03/10/97	04:15	150	70	2400	15	1800
03/10/97	05:15	150	70	2400	15	1800
03/10/97	06:15	150	70	2400	15	1800
03/10/97	07:15	150	70	2400	15	1800
03/10/97	08:15	150	70	2400	15	1800
03/10/97	09:15	150	70	2400	15	1800
03/10/97	10:15	150	70	2400	15	1800
03/10/97	11:15	150	70	2400	15	1800
03/10/97	12:15	150	70	2400	15	1800
03/10/97	13:15	150	70	2400	15	1800
03/10/97	14:15	150	70	2400	15	1800
03/10/97	15:15	150	70	2400	15	1800
03/10/97	16:15	150	70	2400	15	1800
03/10/97	17:15	150	70	2400	15	1800
03/10/97	18:15	150	70	2400	15	1800
03/10/97	19:15	150	70	2400	15	1800
03/10/97	20:15	150	70	2400	15	1800
03/10/97	21:15	150	70	2400	15	1800
03/10/97	22:15	150	70	2400	15	1800
03/10/97	23:15	150	70	2400	15	1800
03/10/97	00:15	150	70	2400	15	1800
03/10/97	01:15	150	70	2400	15	1800
03/10/97	02:15	150	70	2400	15	1800
03/10/97	03:15	150	70	2400	15	1800
03/10/97	04:15	150	70	2400	15	1800
03/10/97	05:15	150	70	2400	15	1800
03/10/97	06:15	150	70	2400	15	1800
03/10/97	07:15	150	70	2400	15	1800
03/10/97	08:15	150	70	2400	15	1800
03/10/97	09:15	150	70	2400	15	1800
03/10/97	10:15	150	70	2400	15	1800
03/10/97	11:15	150	70	2400	15	1800
03/10/97	12:15	150	70	2400	15	1800
03/10/97	13:15	150	70	2400	15	1800
03/10/97	14:15	150	70	2400	15	1800
03/10/97	15:15	150	70	2400	15	1800
03/10/97	16:15	150	70	2400	15	1800
03/10/97	17:15	150	70	2400	15	1800
03/10/97	18:15	150	70	2400	15	1800
03/10/97	19:15	150	70	2400	15	1800
03/10/97	20:15	150	70	2400	15	1800
03/10/97	21:15	150	70	2400	15	1800
03/10/97	22:15	150	70	2400	15	1800
03/10/97	23:15	150	70	2400	15	1800
03/10/97	00:15	150	70	2400	15	1800
03/10/97	01:15	150	70	2400	15	1800
03/10/97	02:15	150	70	2400	15	1800
03/10/97	03:15	150	70	2400	15	1800
03/10/97	04:15	150	70	2400	15	1800
03/10/97	05:15	150	70	2400	15	1800
03/10/97	06:15	150	70	2400	15	1800
03/10/97	07:15	150	70	2400	15	1800
03/10/97	08:15	150	70	2400	15	1800
03/10/97	09:15	150	70	2400	15	1800
03/10/97	10:15	150	70	2400	15	1800
03/10/97	11:15	150	70	2400	15	1800
03/10/97	12:15	150	70	2400	15	1800
03/10/97	13:15	150	70	2400	15	1800
03/10/97	14:15	150	70	2400	15	1800
03/10/97	15:15	150	70	2400	15	1800
03/10/97	16:15	150	70	2400	15	1800
03/10/97	17:15	150	70	2400	15	1800
03/10/97	18:15	150	70	2400	15	1800
03/10/97	19:15	150	70	2400	15	1800
03/10/97	20:15	150	70	2400	15	1800
03/10/97	21:15	150	70	2400	15	1800
03/10/97	22:15	150	70	2400	15	1800
03/10/97	23:15	150	70	2400	15	1800
03/10/97	00:15	150	70	2400	15	1800
03/10/97	01:15	150	70	2400	15	1800
03/10/97	02:15	150	70	2400	15	1800
03/10/97	03:15	150	70	2400	15	1800
03/10/97	04:15	150	70	2400	15	1800
03/10/97	05:15	150	70	2400	15	1800
03/10/97	06:15	150	70	2400	15	1800
03/10/97	07:15	150	70	2400	15	1800
03/10/97	08:15	150	70	2400	15	1800
03/10/97	09:15	150	70	2400	15	1800
03/10/97	10:15	150	70	2400	15	1800
03/10/97	11:15	150	70	2400	15	