

MINERAL CLAIM N 325

Annual Report

2012 - 2013

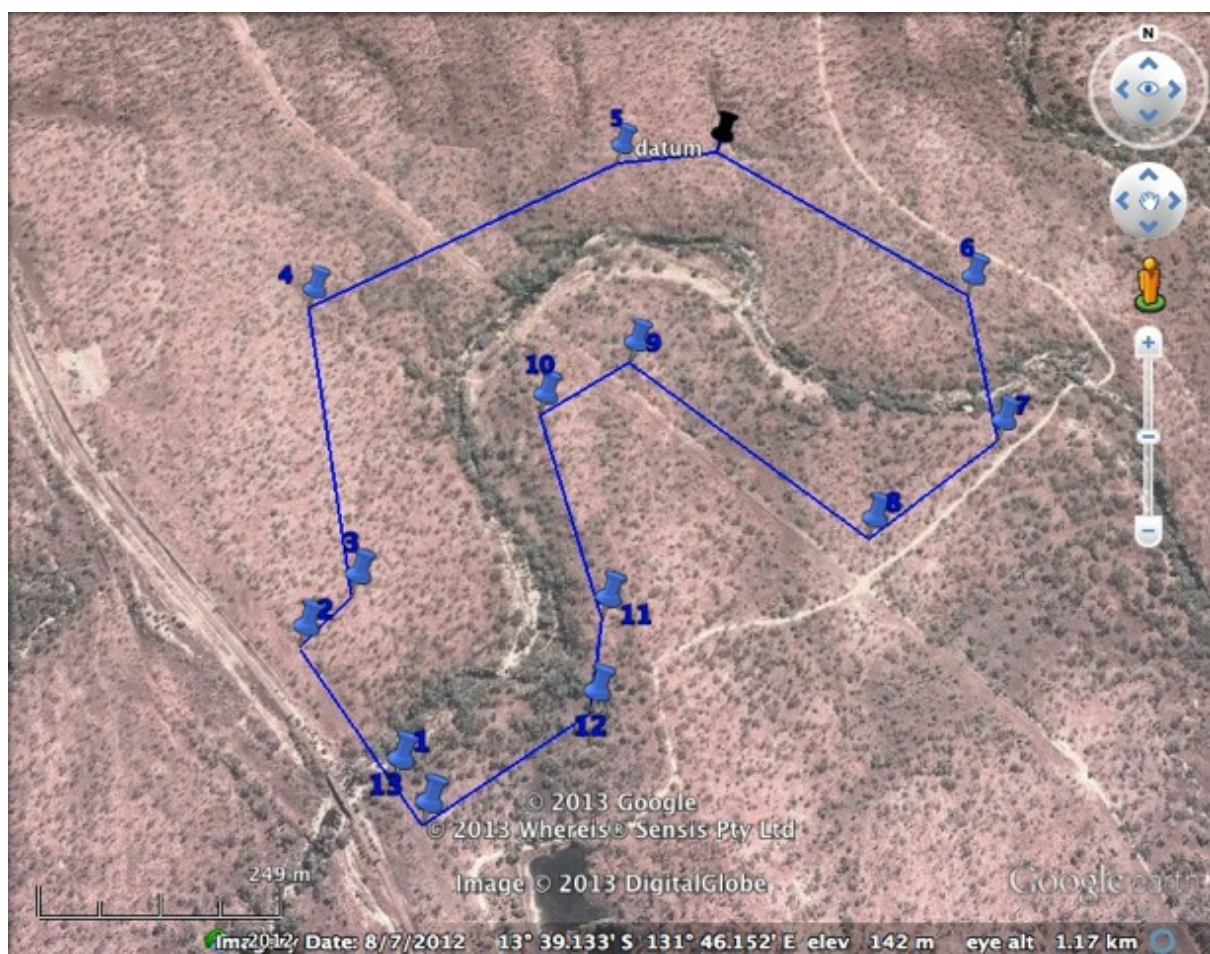
Title Holders: Bert Korenstra & Gerard Breen

DETAILS OF ACTIVITIES 2013

Establishment of Lease Boundaries:

Several meetings were held throughout the year with Kevin Pritchard from Department of Mines & Energy to establish lease boundaries.

The datum post was marked as requested by Kevin Pritchard, and final lease boundary details provided as detailed in map below.



Exploration activities:

- Meetings were held with previous leaseholder Ian Jenat to determine likely areas for further gold exploration.
- Continued panning of various locations along the McKinley River.
- Extensive gold detecting at various locations on the lease using a Mine-Lab gold detector.

Further Activities:

- A base camp is being established with facilities to allow for longer term stays and exploration activities.
- A sea container has been purchased and converted for the purpose of a base camp.

Conversion of Mineral Claim:

Mineral Claim N 325 was converted to Mineral Lease 29660 on 24 June 2013 for a term of 5 years.

The datum plate in the north east corner has been updated with the new tenure details.

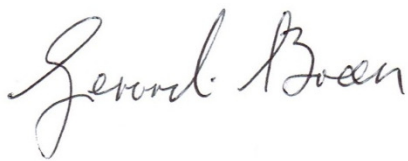
NOTE

MC N 325 (ML 29660) is not accessible during the wet season and thus activities can only be carried out during the dry once creek and river crossings have receded. This limits considerably what activities can be carried out over the period of the year and can vary dependant on the extent of the wet season and the annual rainfall.

ACTIVITIES PLANNED FOR 2013-2014

- Further panning and gold detecting to evaluate mineral deposits over the lease.
- Final establishment of a base camp.
- Taking sand and rock samples from various locations on the lease for analysis.
- Depending on the outcome of analysis of samples, contact the Department of Mines and Energy for notification of further activities and lease development.

Signed:



Gerard Breen



Bert Korenstra