



Operator: Crossland Strategic Metals Ltd

Charley Creek EL 28795

Arunta Region

Final Report for EL 28795 for the period 12 December 2011 to
16 October 2019

Tenement Holders: Crossland Nickel Pty Ltd and Essential Mining Resources Pty
Ltd

Paul Melville
November 2019

Summary

EL 28975 was granted to Crossland Nickel Pty Ltd (Crossland) and Panconoz Pty Ltd (Panconoz) on 12 December 2011 for a period of 6 years. The interests of Panconoz were acquired by Essential Mining Resources Pty Ltd (EMR) in late 2015. The granted licence originally consisted of 16 blocks or 50.44 km².

A decision was made by Crossland to surrender the tenement in mid October 2019. Following several reductions the licence consisted of three blocks when surrendered. DPIP stated 16th October 2019 as the licence cessation date.

The target commodity has been Rare Earth Elements (REE).

Bibliographic Data

Report Title	Final Report for EL 28795 for the period 14 December 2011 to 21 November 2015
Author	Paul Melville
Project Name	Charley Creek – Amburla East
Tenement Number	EL 28795
Tenement Holder	Crossland Nickel Pty Ltd (56.28%), Essential Mining Resources Pty Ltd (43.72%)
Operator	Crossland Strategic Metals Limited
Commodities	Rare Earth Elements
Tectonic unit	Arunta Region
1:250 000 MapSheet	Hermannsburg (SF53-13)
1:100 000 MapSheet	Anburla
Keywords	Arunta Region, Charley Creek, Uranium, REE

This document and its content are the copyright of Crossland Strategic Metals Limited. The document has been prepared for submission to the Northern Territory Department of Primary Industry and Resources as part of the tenement reporting requirements as per the Minerals Titles Act (NT). Any information included in the report that originates from other sources is listed in the “References” section at the end of the document. All relevant authorisations and consents have been obtained. Crossland Strategic Metals Limited authorise the department to copy and distribute the report and associated data.

Table of Contents

1	Introduction.....	5
2	Tenure Details.....	5
3	Tenement Geology.....	5
4	Previous Exploration.....	7
5	Exploration Rationale and Work Completed.....	7
6	References.....	8

Figures in Text

Figure 1	Regional location of EL 28795.....	6
Figure 2	Detail of EL28795.....	6

1 Introduction

Exploration Licence (EL) 28795, originally comprising 16 blocks or 50.44 km² in area, is located approximately 70 kilometres northwest of Alice Springs, just north of the Tanami Highway. Access to the licence is via the sealed highway then station tracks. The title was held by Crossland Nickel Pty and Essential Mining Resources Pty Ltd and was considered prospective for alluvial concentrations of Rare Earth Elements. See Figure 1.

EL 28795 was part of Charley Creek Group Reporting GR339, which will now consist of five (5) licences following this surrender. The licence was surrendered as part of Crossland's strategy to reduce landholdings on the Charley Creek project area, thereby conserving funds. This strategy also enables the company to concentrate on the two principal identified resource areas.

2 Tenure Details

EL 28795 was originally granted to Crossland and Panconoz on 12 December 2011 for a period of six years. The licence comprised 16 sub-blocks, an area of approximately 50 km². The assets of Panconoz were acquired by EMR in late 2015.

Up to Surrender, the tenement has undergone four reductions since 2014 to reach the current size of three blocks.

3 Tenement Geology

Much of the plains country to the north of the ranges is composed of Quaternary, and to a lesser degree Tertiary sediments. The Tertiary sediments have been described as sands, clays, siltstone and conglomerate with some lignitic horizons. The Quaternary sediments are characterised by shallow alluvial fans of coarse gravels, sandy ephemeral creek deposits, sand and clay with a surficial covering of aeolian silts and sand with minor calcrete and carbonate deposits. The degree of cover formed by these sediments varies regionally.

The majority of EL 28795 is mapped as undifferentiated Quaternary and Tertiary units except for a small portion along the western boundary mapped as Quaternary alluvial silt and sand.

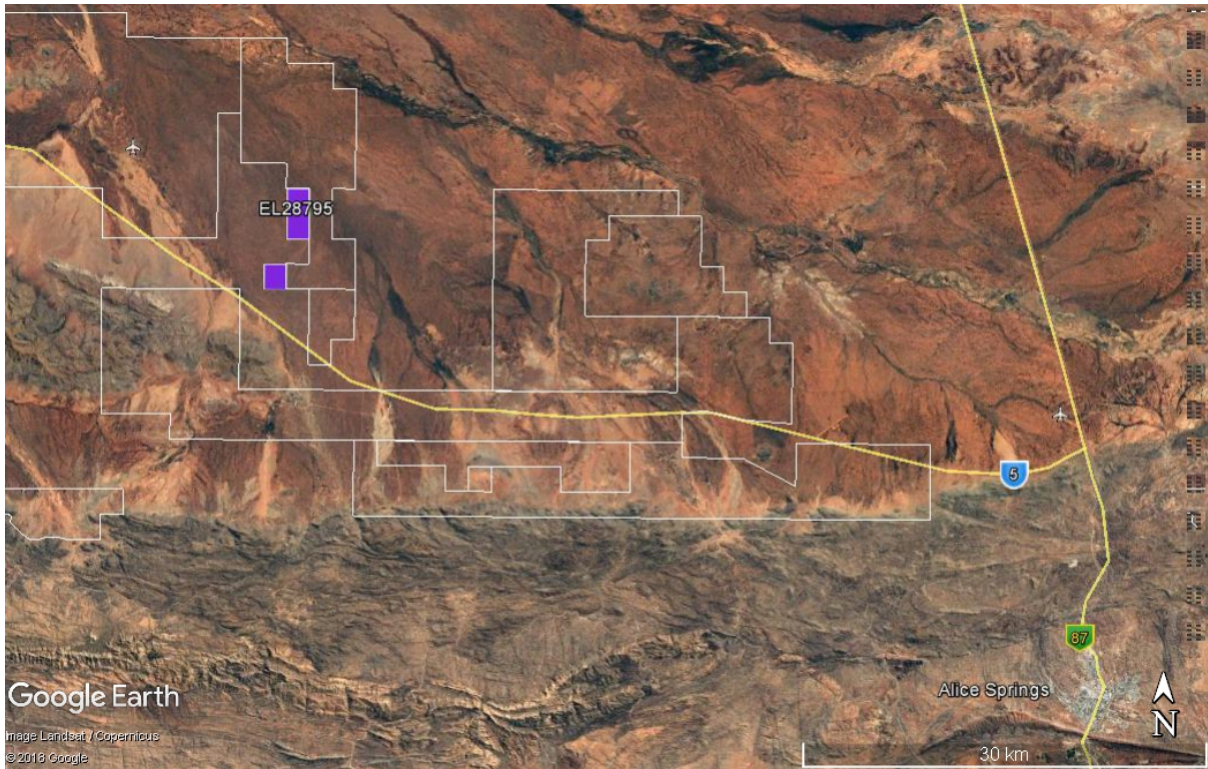


Figure 1. EL28795 Regional location

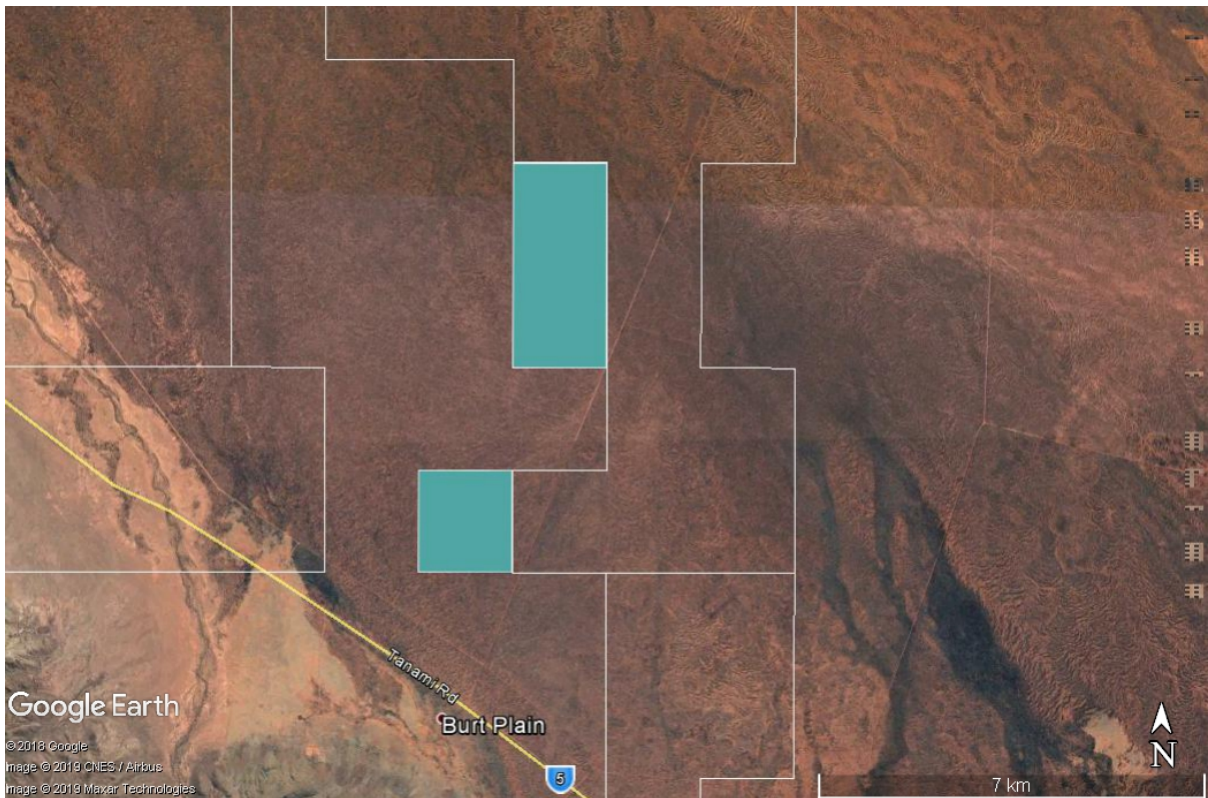


Figure 2 EL 28795 detail of surrendered licence (infilled)

4 Previous Exploration

Historical exploration activities were undertaken by Conzinc Rio Tinto Australia Exploration (CRAE) for sedimentary uranium targets in the 1970s and nickel, copper and PGE in the mid to late 1990's. Several junior companies also explored the area for its sedimentary uranium potential.

Esso Australia Limited explored the Teapot Granite in 1977 for uranium following an airborne radiometric survey.

There has been no historical work recorded within the surrendered area.

5 Work Completed by Crossland

There have been no exploration activities carried out by Crossland within the surrendered area.

6 References

Buskas, M. Annual Report for EL 28795 for the period 12 December 2012 to 11 December 2013. Crossland Uranium Mines Limited

Eupene, G.S., 2006. EL24281 – Charley Creek Target – Annual Report. 7 February 2005 to 6 February 2006. Crossland Uranium Mines Limited

Melville P.M. Partial Cancellation Report for EL 28795 for the period 12 December 2011 to 11 June 2014. Crossland Strategic Metals Limited

Shaw, R.D., Warren, R.G., et al 1995; Hermannsburg (1:250000 Scale Map). Australian Geological Survey Organisation, Canberra.

Warren, R.G., Shaw, R.D. 1995, Hermannsburg NT – 1:250000 Geological Series. NTGS. Explanatory Notes SF53-13.