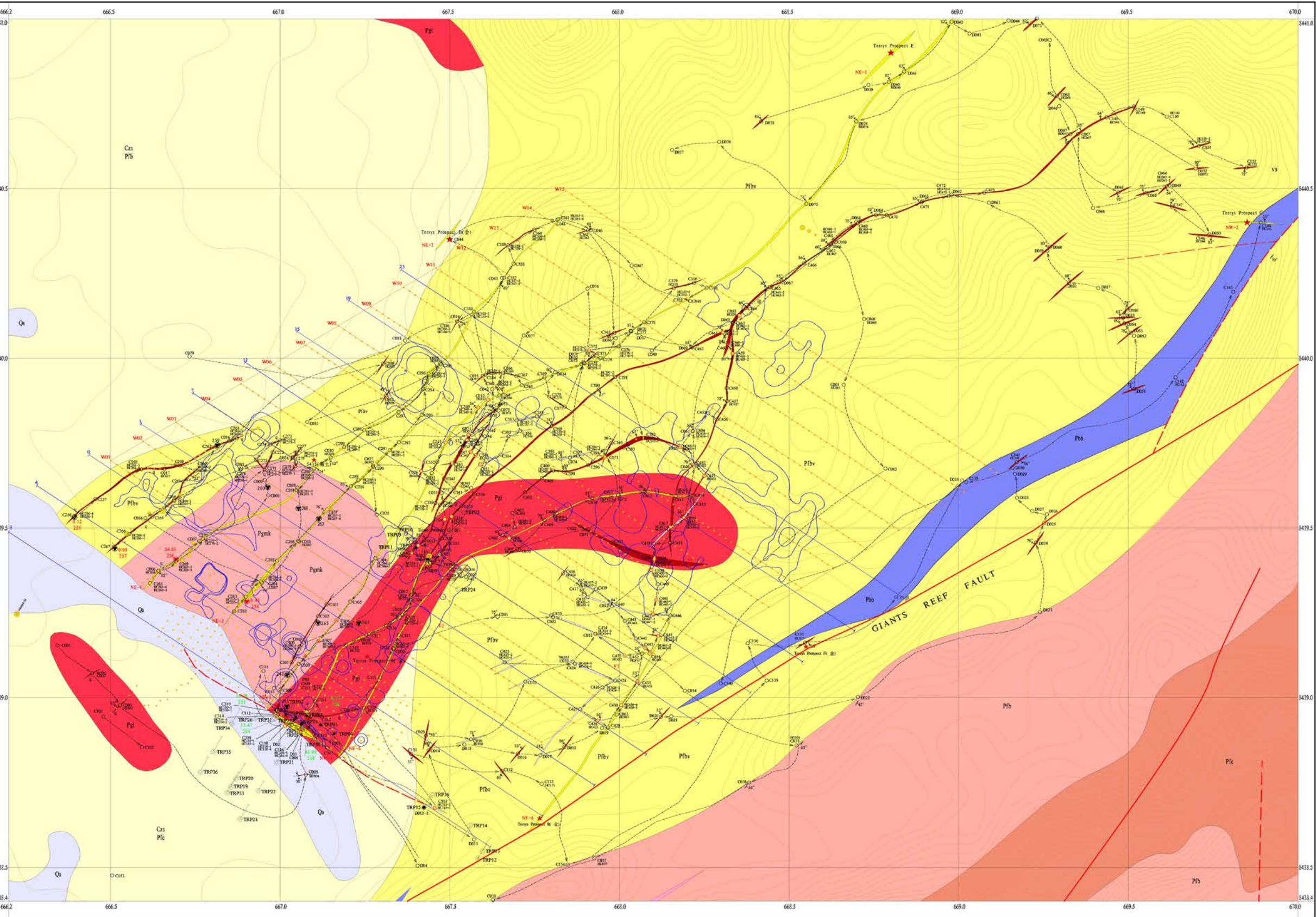


GEOLOGICAL MAP OF THE TERRY'S PROSPECT, WINGATE MOUNTAIN, NORTH TERRITORY

1: 5000



- Quaternary
- Cretaceous
- Finis River Group Chilling Formation
- Finis River Group Burrell Creek Formation
- Finis River Group Bellinca Volcanics
- Ti-tree Granophy
- Marrakange Granite
- Wangi Basics
- Quartz Vein and Veins Belt
- Ore-body
- Fault
- Geological Boundary
- Dipping
- Section and Numbers
- Soil Section
- Drilling Number
- Geological Site and Number
- Rocks Chips Spots
- As anomaly