

WesternDesert

R E S O U R C E S

ANNUAL REPORT

HOPEFUL STAR MINERAL LEASES

MLC 624 and MLC 632

For the Period 1/1/2012 to 31/12/2012

by

ANDY BENNETT

BSc (Hons) MAusIMM

Contact andy.bennett@wdrl.com.au

Datum/Zone GDA 94 – Zone 53

1:250000 Tennant Creek SE5314

1:100000 Tennant Creek 5758

Target Gold, Base Metals

February 2013

WESTERN DESERT RESOURCES LTD ABN 48 122 301 848
LEVEL 1/26 GREENHILL ROAD WAYVILLE SA 5034
PO BOX 83 GOODWOOD SA 5034
T (08) 8177 8800 F (08) 8272 2838

info@westerndesertresources.com.au www.westerndesertresources.com.au

ABSTRACT

The Hopeful Star Project consists of two Minerals Leases within the Tennant Creek goldfields on which there are historical “Hopeful Star” and Hopeful Star Extended” workings with an estimated total past production of about 2638 tonnes at a head grade of more than 9g/t gold.

No production has occurred during the current reporting period. In 2011, a compilation of historical exploration and the current high gold price led to the conclusion that drilling is warranted to investigate the potential of the lease to host an open pit-able gold resource. Drilling was planned and a 4235 station ground magnetic survey was undertaken to refine it. However, An AAPA clearance survey was then undertaken which identified an exclusion zone around the majority of the leases, centred on the old workings. No drilling has therefore been undertaken and it is uncertain whether access will be granted.

1. LOCATION AND ACCESS	2
2. TENURE	3
3. GEOLOGICAL SETTING.....	4
4. PROJECT GEOLOGY.....	5
5. MINING HISTORY	6
6. PREVIOUS EXPLORATION SUMMARY.....	6
7. EXPLORATION THIS REPORTING PERIOD	8
8. REFERENCES.....	10

LIST OF FIGURES

Figure 1: Location of Hopeful Star Mineral Leases	3
Figure 2: Geological Map of Tennant Creek Area	5
Figure 3: Summary of exploration at Hopeful Star	8
Figure 4: Planned Drilling at Hopeful Star.....	9
Figure 5: Ground magnetic traverses at Hopeful Star	9

DIGITAL FILE LISTING

FileName	Format
HopefulStar_2012_A_01	pdf
HopefulStar_2012_A_04_GroundMag	dfn
HopefulStar_2012_A_05_GroundMag	dat
HopefulStar_2012_A_06_GroundMag	des
HopefulStar_2012_A_02_MagImages	pdf
HopefulStar_2012_A_03_FileListing	txt

1. LOCATION AND ACCESS

The Hopeful Star Mineral Leases are located only 16km east-northeast of Tennant Creek township and cover a total area of about 9 Ha (Figure 1). The mineral leases are located on the Tennant Creek 1:250,000 Geology Map and lie within Pastoral Lease 1142. Access is via unsealed road from Tennant Creek.

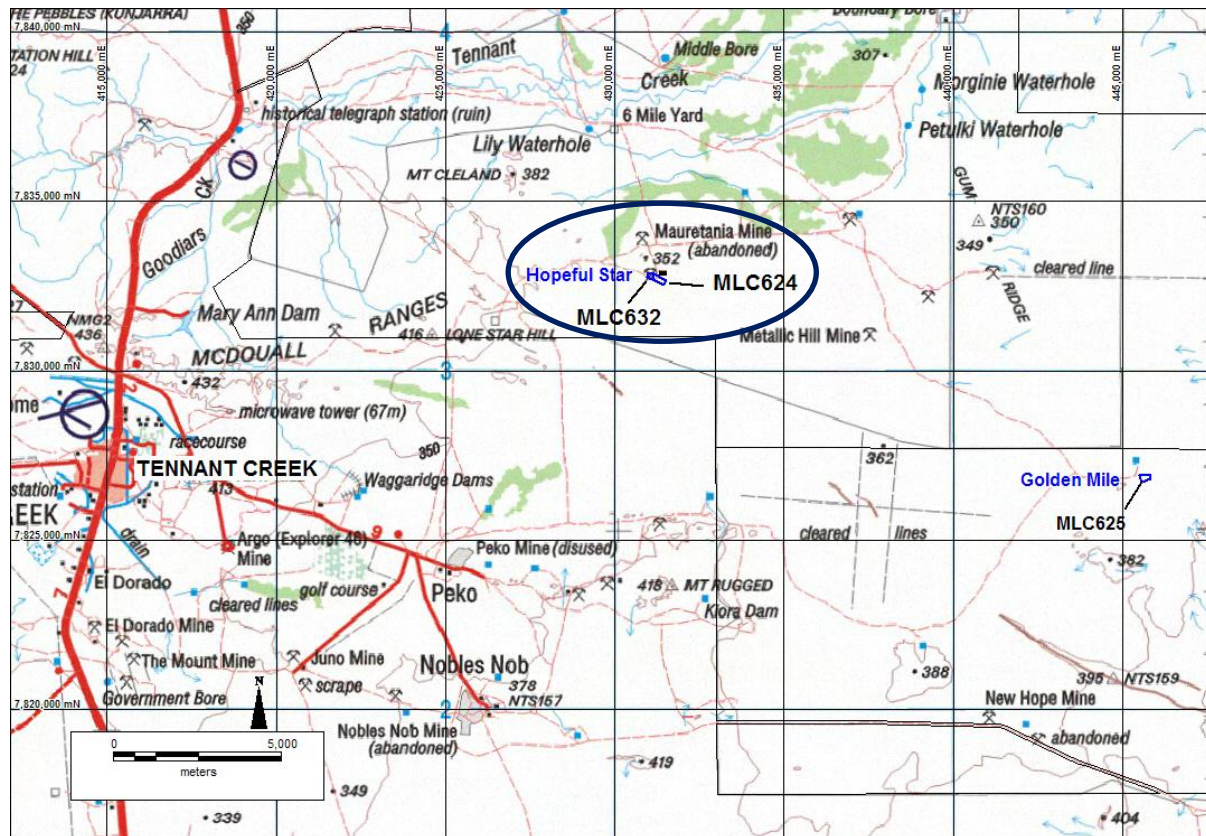


Figure 1: Location of Hopeful Star Mineral Leases

2. TENURE

Mineral Leases 624 and 632 were first granted in 1981 (originally as GML813E and GML829E respectively) to local prospectors in Tennant Creek. A lease summary is provided in Table 1. The titleholders have changed hands many times since then, and operated under a number of joint ventures, and culminated in WDR purchasing the tenements from Tennant Creek Gold (NT) Ltd as part of the company float in July 2007. Both leases were renewed together in 2004 and the term of both leases expired on 31/12/2011. During the current year, both leases were renewed for a period of 10 years, ending 31 December 2021.

Table 1: Hopeful Star Lease Summary

Lease No.	Lease Name	Area	First Grant	Expiry
MLC624	Hopeful Star Extended	5 Ha	27/4/1981	31/12/2021
MLC632	Hopeful Star	4 Ha	31/7/1981	31/12/2021

Some discrepancies with the precise lease boundaries remain, as the lease posts still only have approximate GPS positioning, and it is uncertain whether the correct corner posts were recorded. A differential GPS pick up was intended during the year, but did not eventuate.

3. GEOLOGICAL SETTING

The Tennant Creek Goldfield is located within the central Tennant Creek Block of the Paleoproterozoic Tennant Creek Inlier. The oldest rocks of the block are the metasedimentary rocks of the Warramunga Formation, which hosts the ironstone-gold-copper-bismuth mineralisation of the field. The formation is comprised of a sequence of argillaceous sedimentary rocks that includes greywackes, siltstone, shale and units of haematitic-magnetite shale. It has been subjected to three phases of deformation. The first phase formed tight to isoclinal folds with an east-west axis, the second formed west-northwest trending faults and shear zones, and the last, northwest trending faults (Figure 2).

Following deformation and uplift of the basement, the volcanics and volcanoclastics of the Flynn Group were erupted, with intrusion of porphyries and minor granitoids into the Warramunga Formation.

The Au-Cu-Bi mineralisation in the goldfield occurs in transgressive magnetite- and haematite rich bodies within the Warramunga Formation. The bodies, locally referred to as ironstones, have an ellipsoidal to pipelike shape commonly flattened in the direction of the east-west cleavage. Chlorite-rich pipes of hydrothermal alteration extend vertically below the orebodies. Only a relatively small number of the ironstone bodies in the field, however, are mineralised.

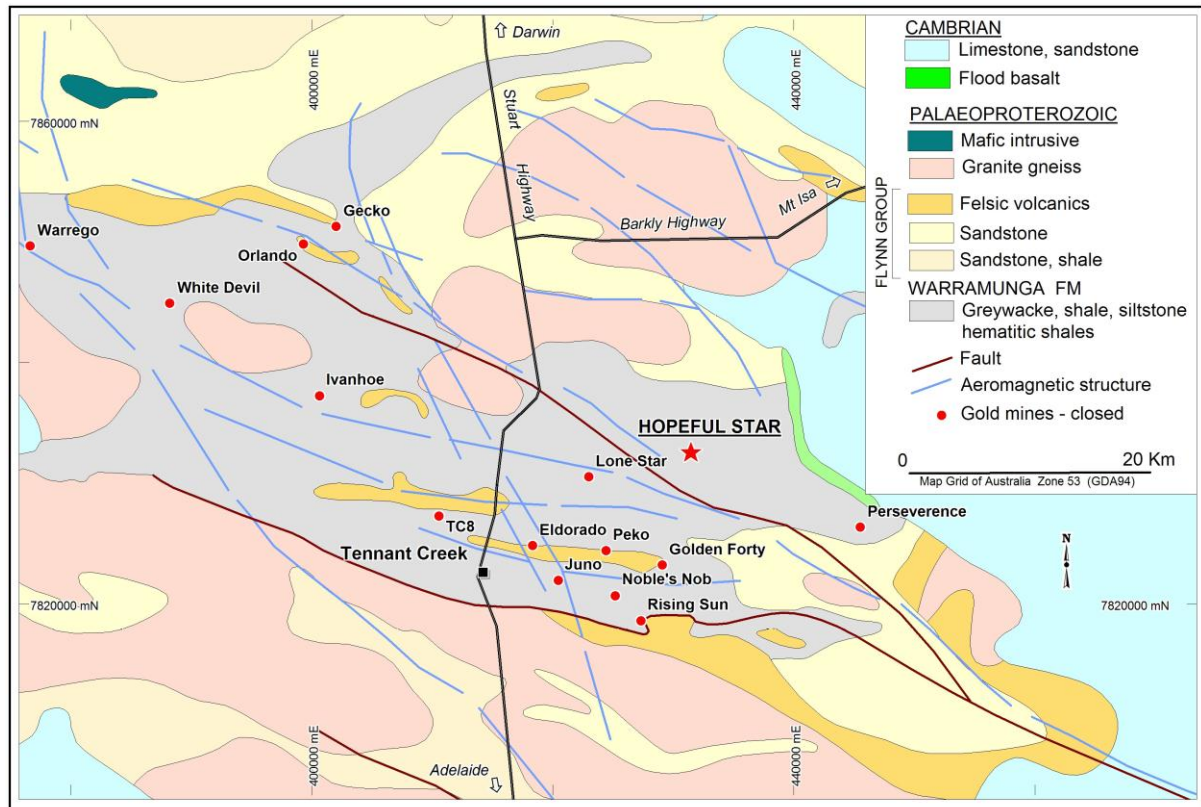


Figure 2: Geological Map of Tennant Creek Area

4. PROJECT GEOLOGY

The Hopeful Star tenements are located over rocks of the Warramunga Formation, subcrop of which occurs in the western half of the leases. The Warramunga Formation is folded and cleaved, the fold axis following the regional west-northwest direction. The formation includes shales siltstones and greywackes. Some siltstone units contain fine hematitic banding. The quartz-ironstone breccias contain quartz-jasper-hematite, massive hematite rock, and quartz-hematite variants.

A mineralised shear trends west-northwest through the main workings, and a number of minor faults and shear zones have been mapped in the old workings. Hematitic and kaolinitic alteration is present within, and adjacent to, the shear zone.

Outcrop is mainly limited to the area around “The Tooth”, which is a prominent conical hill which rises approximately 25m above the surrounding ground surface (Figure 2). The rocks largely consist of schistose siltstones and shales which have an approximate east-west strike and generally dip to the north at between 50° and 80°. Evidence of folding is confined to an exposed anticlinal axis located about 60m east of the Tooth. The fold plunges shallowly at about 10° towards the ENE. The Tooth itself represents the pallid zone of a lateritic profile.

A number of shears have been mapped in the old workings, within and adjacent to rocks that are hematized and kaolinized. A lens of fault breccia is present on the crest and northern flank of the Tooth. It is composed of quartz-jasper-hematite and includes some massive ironstone material. Another ironstone body subcrops about 90m north-northwest of the Tooth.

The depth of oxidisation has been estimated at about 40m.

5. MINING HISTORY

Historical workings consist in total of five shallow shafts, one adit and a small open pit, dotted along the length of the leases. The information below has been sourced from a number of references listed in Section 9 of this report.

The original “Hopeful Star” mine is located on the south side of “The Tooth”. The original shaft was 38 feet deep leading to a large east-west aligned stope, which is now collapsed. There is believed to be approximately 70m of underground drives once accessed from the adit.

The recorded production at Hopeful Star is estimated as follows:

- Prior to June 1952, 1641 tonnes of ore were produced which yielded 5,303 grams of gold, for an average grade of about 3.23 g/t Au. Tailings averaged 2.84 g/t, indicating a head grade of about 6.1 g/t Au (Ivanac, 1954).
- Production resumed intermittently between 1969 and 1978, with total recorded tonnage being 997.2 t, treated by the Tennant Creek Battery. It is believed that 383.6t of this total were extracted from shafts located some distance from the original “Hopeful Star” mine. This ore yielded a total of 8450g of fine gold, at an average grade of 22 g/t Au, with tailings averaging 6.7 g/t Au, for a head grade of about 28.7 g/t Au. The remaining 613.6 t is believed to have been dump material from various locations, including dumps from the original “Hopeful Star” mine. This ore yielded 1409g of gold at an average grade of 2.3 g/t Au, with tailings averaging about 0.7 /t Au, for a head grade of about 3g/t Au.

In total therefore, it is calculated that for the total of 2,638.5 t of ore produced from the area, that the average grade was about 5.75g/t Au, with a recovery of 61% (or head grade of 9.4 g/t).

6. PREVIOUS EXPLORATION SUMMARY

There has been considerable previous exploration on the Hopeful Star Mining Leases, summarised in Figure 3 and discussed briefly below. Information has been compiled from the references listed in the “References” section of this report.

The first known exploration of the prospect area was by United Uranium NL in 1957. This work was confined to underground sampling of the easternmost pair of shafts at “Hopeful Star Extended” mine, which returned 14g/t over 3.7m width and 18g/t over 3.1m width.

In 1967, the BMR drilled two diamond drill holes totalling 255m underneath the original Hopeful Star mine (the Tooth). The drilling returned a best intersection of 0.3m@ 1.6g/t Au. Nine dump samples were also taken, averaging 1.06 g/t Au. The BMR later drilled 21 shallow vertical percussion holes to the east of the main shaft at what is now known as the “Slot” (Figure 2), for best intersections of 3m@ 29g/t Au and 6m @ 14.5 g/t Au. This latter area was worked to a maximum depth of 11.5m.

In 1970-71, Geotechnics Pty Ltd explored the area for base metals. A grid was constructed and exploration included geological mapping, ground magnetics, bedrock geochemical sampling (on about 120m grid spacing), underground mapping and sampling. Analyses were only for base metals.

In 1987, Tennant Creek Gold Ltd took up the leases and completed 3 RC holes (“HPD” series) totalling 224m with a best intersection of 2m @ 1.71g/t Au.

In 1989, Metana Minerals in JV with Tennant Creek Gold (NT) Pty Ltd completed a substantial program which included gridding, soil and rock chip sampling, 94 RAB holes (282m), 93 Vacuum holes (198m), five open hole inclined percussion drill holes (“HAT” series totalling 139 metres), RC drilling (“HRC” series- 6 holes totalling 241 metres) and a ground magnetometer survey. The ground magnetic survey on a 20x5m grid over the “Tooth” showed a weak anomaly over the Tooth. Best drilling results at the Tooth were 26m@ 1.04g/t Au from 13m, including 6 m@ 3.92 g/t Au. Channel sampling within the Tooth resulted in a best intersection of 6g/t Au over 2m width and channel sampling of the old workings returned best results of 4m@ 2.8 g/t Au and 4m @ 6.2 g/t Au. The shallow geochemical drilling outlined a broad (150x25m), coherent linear anomaly (Au, Bi, Cu, Pb) which parallels the known trend of mineralisation.

In 1990 after Metana withdrew from the JV, Tennant Creek Gold (NT) Pty Ltd drilled a further 50 Vacuum bedrock holes (100m) on geochemical anomalies and a further two 20m holes (“VDH” series) at the eastern side of the collapsed shaft in the Slot area, from which results included 12m metres averaging 3.8 g/t gold, including 1 metre @ 10.26 g/t gold.

In 1991, Roebuck in JV with North Flinders Mines Ltd re-drilled a further 21 RAB holes (63m) in order to confirm previous results. This work confirmed previous assay grades.

Between 1992 and 1995, 442 vertical RAB holes (totaling 2,098 metres), 28 inclined percussion holes (“HSG” series totaling 1,230 metres) and 3 RC holes (totaling 230 metres) were drilled. The inclined RC holes were drilled on a single north-south traverse west of the Tooth, intersected massive ironstone (up to 5.5 metres wide) with a best result of 2 metres averaging 0.95 g/t gold.

The tenements became part of a JV agreement between PosGold (Normandy Gold Pty Ltd) and Tennant Creek Gold NL in 1996. There is no record of any further exploration being carried out.

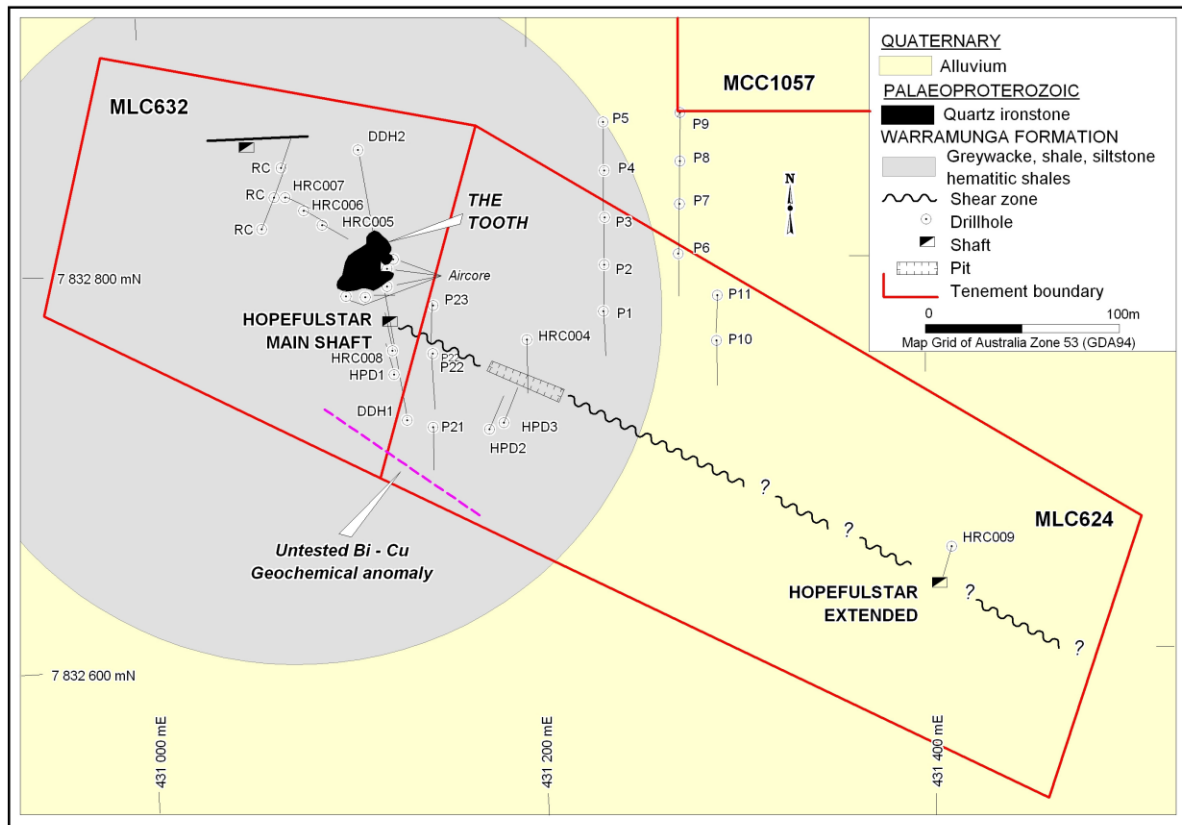


Figure 3: Summary of exploration at Hopeful Star

7. EXPLORATION THIS REPORTING PERIOD

Following an internal review of its exploration assets during the previous year, WDR decided that the Hopeful Start tenements were of interest given the high gold price. A grid-based RC drilling program was planned totalling 184 holes for 7500m (Figure 4) and an MMP authorisation was obtained.

It was then decided that a ground magnetic survey would be useful in prioritising drilling and provide further information on target depths. A Geonics G-858 magnetometer was hired from Euro Exploration Services and a 4235 station survey was carried out in May 2012. The survey started out at 10m line spacing, but ended up at 20m line spacing due to time constraints. A location map is shown in Figure 5. The data was subsequently processed, and images are appended to this report. The processing involved removing a heading error of -3.5nT due to a variation of the measured data dependent on line direction, and calculation of RTP and VRMI (Vector Residual Magnetic Intensity- a filter which removes the effects of remanence). Results of the magnetic survey have not yet been used to modify the drilling plan, for reasons discussed below.

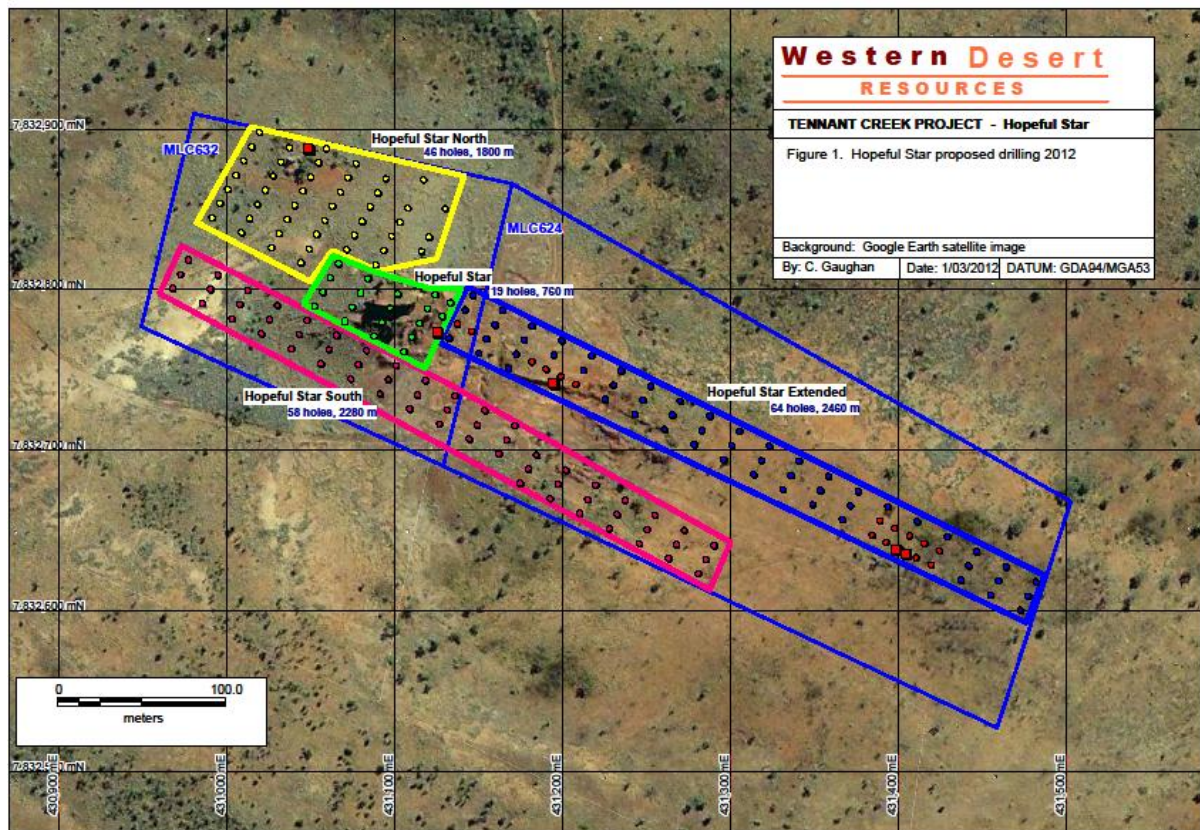


Figure 4: Planned Drilling at Hopeful Star

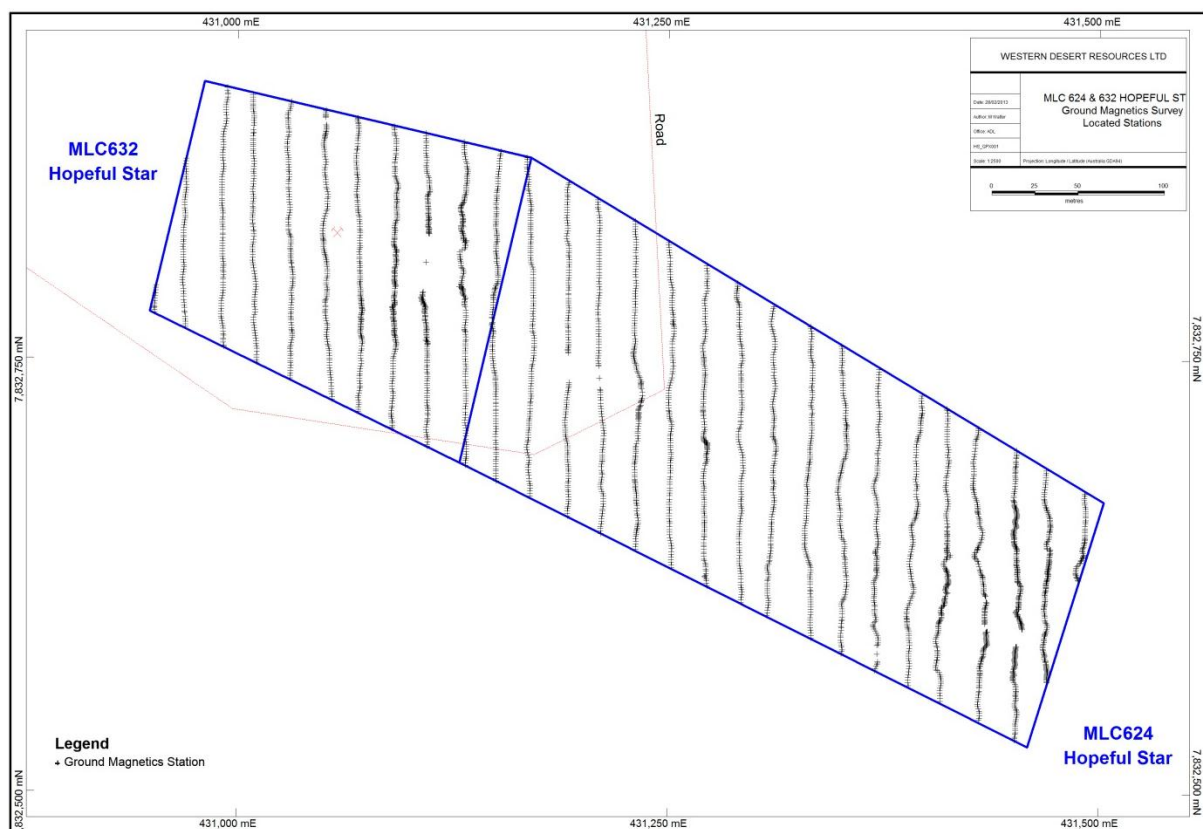


Figure 5: Ground magnetic traverses at Hopeful Star

In order to get permission to access the ground for ground disturbing activity, a search was undertaken of existing AAPA records for past clearances. The search showed that the leases are covered by an existing clearance carried out in the late 1990s. However, that clearance was quite broad in its scope, covering a large area in the Tennant Creek region, with little detail pertinent to the Hopeful Star area. The search did show that there that there is a Recorded Site in the immediate area of MLC624 and MLC632. During the reporting period, WDR applied for and received an Authority Certificate from the AAPA, which unfortunately showed an exclusion zone covering the majority of the planned drilling.

Further exploration is therefore on hold pending negotiations to obtain access.

8. REFERENCES

Fox, K., 1987 Consultant geologists report for prospectus for Tennant Creek Gold Ltd (unpublished)

Fox, K., 1992 The Hopeful Star Prospect; A brief preliminary assessment of the results of exploration completed by Roebuck Resources NL/North Flinders Mines Ltd Joint Venture up to the 30th April, 1992.

Fox, K., 1993 The Hopeful Star Tenement Group Comprising Mineral Leases C624 and C632 and Mineral Claim C1057 – The Tennant Creek Gold Ltd Option; Mineral Claims C 343 and C 491 – The Remfrey Option; and Mineral Claims C 1069 and C 1070. Final Exploration Report- Technical Report No. 302

Ivanac, J.F., 1954 The Geology and Mineral Deposits of the Tennant Creek Goldfield, Northern Territory; BMR, Geology and Geophysics Bulletin No.22

Ward, H.J., 1970 Report on the Gigantic Mine and Hopeful Star Areas and Authority to Prospect 2892, Tennant Creek District, NT: Geotechnics (Aust) Pty Ltd (August, 1970). NT Geol. Survey Open File

Tapp, B.A., 1967 Report on the Minor Metalliferous Investigations, Tennant Creek Area NT: BMR, Geology and Geophysics Record 1967/127

Mackie, A.W., 1989 Project progress report on Mining Leases 632, 624 – Hopeful Star for the year ending 27th July 1989. Metana Minerals NL Report No 1989/11

Mackie, A.W., 1994 Summary of Exploration on Hopeful Star Prospect 1987-1994 MLC 624, 632, MCCs 343, 491 and 1057

Mackie, A.W., 2003 Tennant Creek Gold (NT) P/L Tenement Portfolio Summary Report (unpublished)