



Operator: Crossland Strategic Metals Ltd

Charley Creek

Arunta Region

Partial Cancellation Report for EL 29853 for the period 15 August 2013 to 30 May 2019

Tenement Holders: Crossland Nickel Pty Ltd and
Essential Mining Resources Pty Ltd

Paul Melville
June 2019

Summary

The subject tenement originally consisted of 133 sub-blocks when granted on 15 August 2013 to Crossland Nickel Pty Ltd (Crossland) and Panconoz Pty Ltd. The latter entity was purchased by Essential Mining Resources Pty Ltd. (EMR) in 2016. Crossland holds a 56.28% and EMR 43.72% ownership of the licence. Both companies are wholly owned by Crossland Strategic Metals Limited, the Operator of the Charley Creek Project.

Crossland / EMR was issued with a Partial Cancellation Notice (Loss of Block Penalty) from the Department of Primary Industry and Resources Mines and Energy (DPIR) on the 18th March 2019. The penalty relates to two consecutive years of underspend on the licence. The number of sub-blocks subject to the cancellation was two (2), from the current total area of forty nine (49).

No exploration activities have been carried out within the area relinquished.

Bibliographic Data

Report Title	Partial Cancellation Report for EL 29853 for the period 15 August 2013 to 30 May 2019
Author	Paul Melville
Project Name	Charley Creek
Tenement Number	EL 29853
Tenement Holders	Crossland Nickel Pty Ltd and Essential Mining Resources Pty Ltd
Operator	Crossland Strategic Metals
Limited Commodities	Rare Earth Elements
Tectonic Unit	Arunta Region
1:250 000 MapSheet	Hermannsburg (SF53-13) and Alice Springs (SF53-14)
1:100 000 MapSheet	Anburla 5551 Burt 5651
Keywords	Arunta Region, Charley Creek, REE

This document and its content are the copyright of Crossland Strategic Metals Limited. The document has been prepared for submission to the Northern Territory Department of Primary Industry and Resources as part of the tenement reporting requirements as per the Minerals Titles Act (NT). Any information included in the report that originates from other sources is listed in the "References" section at the end of the document. All relevant authorisations and consents have been obtained. Crossland Strategic Metals Limited authorise the department to copy and distribute the report and associated data.

Table of Contents

1	Introduction.....	5
2	Tenure Details	5
3	Geology.....	7
4	Previous Exploration	7
5	Work Completed by Crossland.....	7
6	Conclusions.....	7
7	References.....	7

Figures in Text

Figure 1	EL29853 Regional Location	5
Figure 2	EL29853 Relinquished Blocks and Area Retained	6

1 Introduction

Exploration Licence (EL) 29853 is centred approximately 50 kilometres northwest of Alice Springs. The regional location of the licence is illustrated in Figure 1. Access is via the sealed Tanami Highway, then by station tracks and fence lines.

The tenement is one of fourteen licences that comprise Crossland's Charley Creek Rare Earth project. The primary target is Rare Earth Elements (REE).

This report deals with the 2 sub-blocks that were relinquished by Crossland following receipt of a Partial Cancellation Notice from DPIR on 18 March 2019. The cancellation was necessitated due to two consecutive years of underspend on the subject tenement.

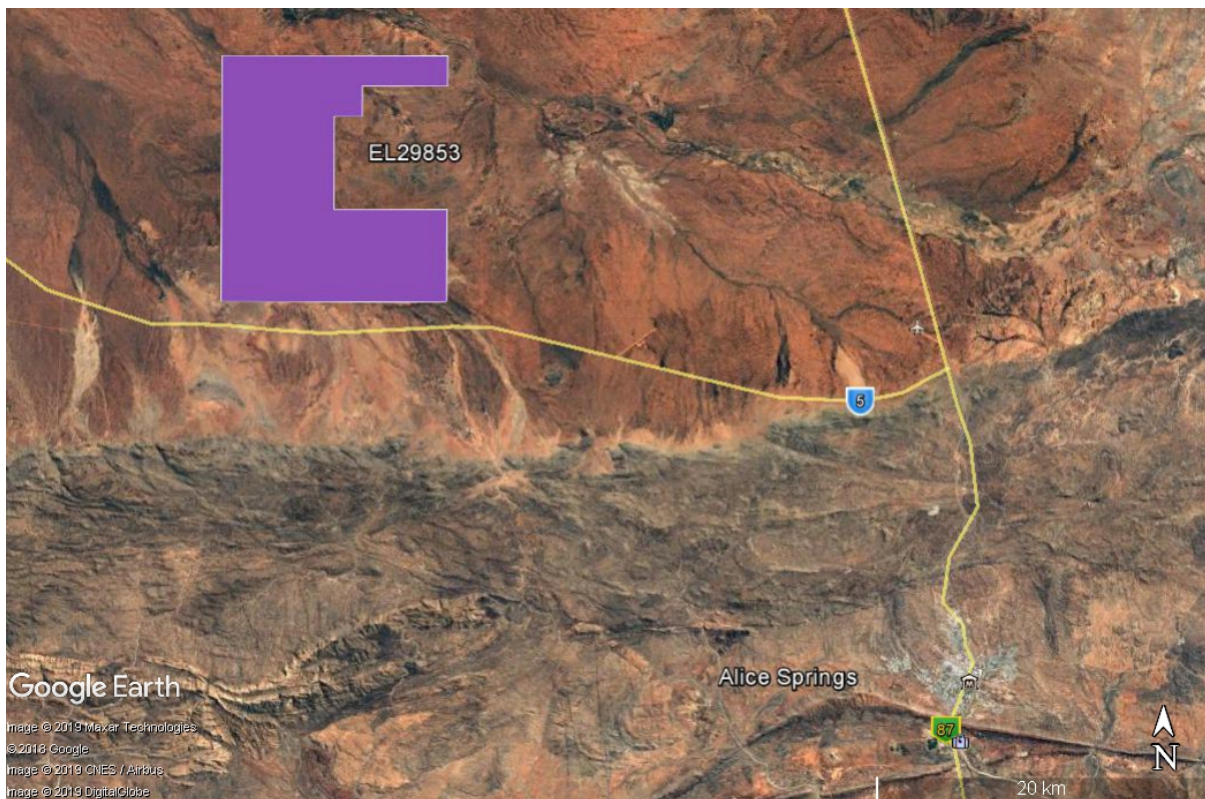


Figure 1 Google Earth image showing regional location of EL 29853 before reduction

2 Tenure Details

EL 29853 was granted to Crossland Nickel Pty Ltd and Panconoz Pty Ltd. on 15 August 2013 for a period of six years. Panconoz, was a wholly owned subsidiary of Pancontinental Uranium Corporation of Canada. On grant, the licence comprised 133 sub-blocks, an area of approximately 419.02 km². In early 2016, Crossland's then new JV Partner EMR acquired the share of Panconoz.

The licence underwent a voluntary reduction in late 2017, reducing the area to 68 sub-blocks. A Penalty Cancellation (Loss of Block) was served on the company in March 2018, which further reduced the licence to 49 sub-blocks, an area of approximately 154.43 km². As of June 3 2019, the licence stands at 47 sub-blocks following the most recent Penalty Reduction.

Details of the blocks / sub-blocks that Crossland nominated for cancellation as follows :

Map Sheets : 1:250,000 – SF53-13 Hermansburg and SF53-14 Alice Springs;

1:100,000 – 5551 Anburla and 5651 Burt

Blocks : part 2899

Tabulation of Blocks with Sub-Blocks to be relinquished

Block	Sub-Block
2899	n, o

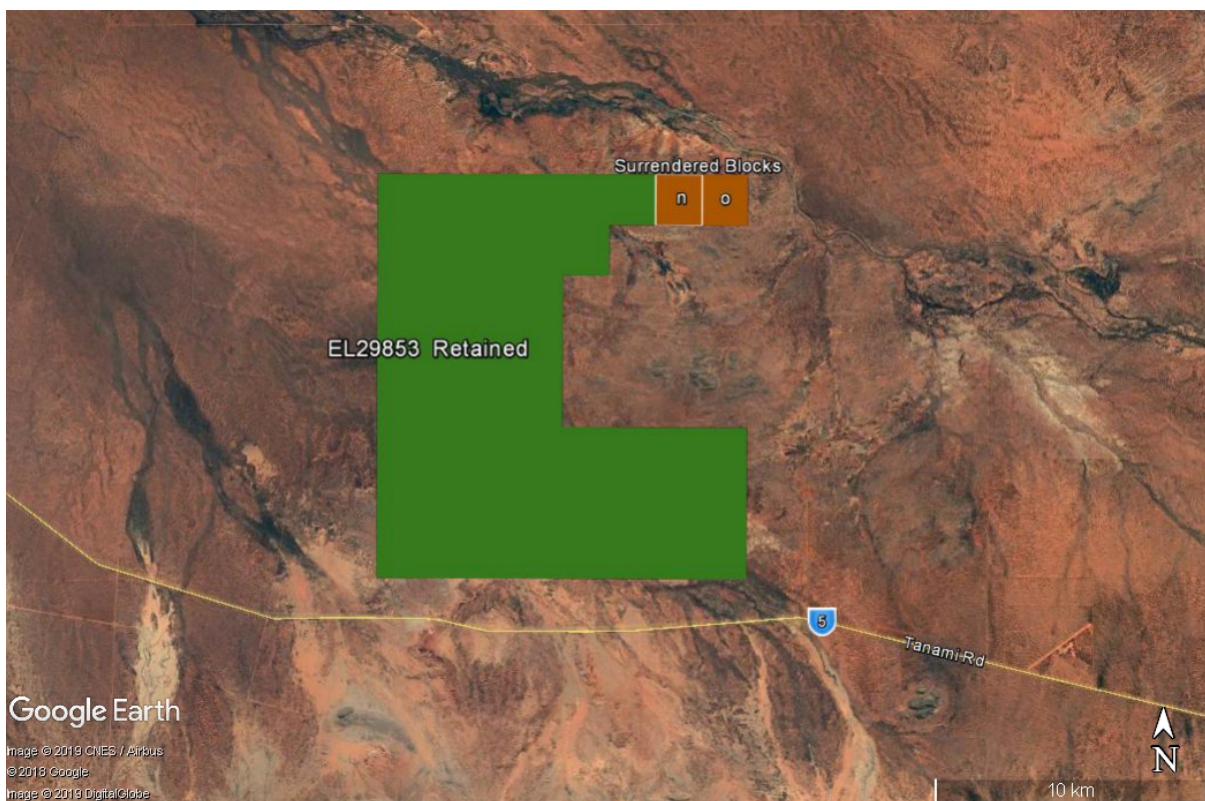


Figure 2 Google Earth image showing sub-blocks Relinquished and Retained

3 Geology

EL 29853 is located on the Burt Plain, Surficially, the country consists of recent soils, clay and sand overlying coarse gravels, sand and clay. There is no outcrop on the two relinquished blocks.

4 Previous Exploration

Conzinc Rio Tinto Australia Exploration (CRAE) explored sections of the Burt Plain for sedimentary uranium targets. These exploration activities were carried out in the 1970's and included sampling and gamma logging of water bores.

5 Work Completed by Crossland

No on-ground work was carried out by the company in the area relinquished.

6 Conclusions

The surrendered ground has very limited potential for alluvial REE concentrations.

7 References

Buskas A., Buskas, M. , Melville P M; various Annual Reports for the Charley Creek Project 2011-2019. Crossland Uranium Mines Limited / Crossland Strategic Metals Limited.

Shaw, R.D. et al 1983, Alice Springs NT – 1:250,000 Scale Map Geological Series. SF53-14. Bureau of Mineral Resources, Canberra.