



# *WOODS INVESTMENTS [NT]*

## *PTY LTD*

**EXPLORATION LICENCE - 27964**

**February 2012**

**ANNUAL REPORT**



## INDEX TO REPORT

- 1:** 12.1 TITLES PAGE
- 2:** 12.2 ABSTRACT
- 3:** 12.3 COPYRIGHT STATEMENT
- 4:** BODY OF TEXT
  - 12.4.1 Location, title history, physiography and access
  - 12.4.2 Geological setting, exploration/mining history and exploration rationale
  - 12.4.3 Exploration index map
  - 12.4.4 Geological activities and office studies
  - 12.4.5 Remote sensing
  - 12.4.6 Geophysical activities
  - 12.4.7 Surface geochemistry
  - 12.4.8 Drilling
  - 12.4.9 Geotechnical studies
  - 12.4.10 Resources and reserve estimation/modeling
- 5:** Conclusion and recommendations
- 6:** References
- 7:** Photographs other than those in the body of the text

## FIGURES

Costeans by location  
Tenement by location  
Project by location

## DIGITAL APPENDICES [SUPPLIED ON CD]

FILE: GOLDCORE

**TITLE PAGE**

<b>NAME OF HOLDER:</b>	WOODS INVESTMENTS [NT] PTY LTD
<b>NAME OF PROJECT OPERATOR:</b>	GOLDCORE ENTERPRISES PTY LTD
<b>REPORT TITLE:</b>	ANNUAL REPORT FOR EL 27964
<b>REPORTING PERIOD:</b>	24 NOVEMEBER 2010 TO 23 NOVEMBER 2011
<b>PERSON AUTHORISED:</b>	MR AARON WOODS
<b>DATE OF COMPILATION:</b>	ORIGINAL COMPILATION – NOVEMBER 2011 RESUBMITTED COMPLIATION – MARCH 2012 [THIS SUBMISSION PER NEW LEGISLATION]
<b>TARGET COMMODITY:</b>	MINERALS
<b>NAMES OF STANDARD NT:</b>	EL27964 ANNUAL REPORT PERIOD 24/11/10 TO 23/11/11
<b>CONTACT FOR TECHNICAL:</b>	MR AARON WOODS – 0448 808 095

## 2 12.2 ABSTRACT

We have been exploring within the "Pine Creek Orogen" region specific to the Adelaide River, of which gold production in the Orogen region between 1987 & 2007 has been recorded 79.3 t Au. Woods Investments obtained tenure EL 27964 in October 2010 after it had been relinquished from a previous joint venture – the area which is better known as Ringwood Station also holds a pastoral lease for cattle. Location is South/South West section of Goodall Mine. Woods Investments holds the Exploration Licence EL27964 [100%] as depicted in [location map A]. There have been various tenures in this area over the past decades, current other EL's within the vicinity are MLN 1049; EL 23516; EL 25228 & EL 10012. Majority of exploration to date by Woods Investments has been preliminary exploration of the area by the use of machinery bobcat/excavator to dig costeans & obtain samples of soil for testing by authorized laboratory located in Darwin NT. This report covers the activities for the period 24 November 2010 to 23 November 2011.

## 3 12.3 COPYRIGHT

As per the Mineral Titles Act 2010 copyright ownership (Regulation 126) this annual report has been written by Mr Aaron Woods whom is the Director of Woods Investments[NT] Pty Ltd. Herby gives authorization to publish information in which the copyright subsists where "publish" has the meaning under Regulation 10 or 125 of the Copyright Act 1968 (Cth). This includes authorising the department to copy and distribute the report and associated data (Regulation 126(3)(a)).

## 4 12.4 BODY OF TEXT

### LOCATION

EL 27964 is located approximately 35 km South East of Adelaide River; adjacent to our project Crocodile Gold holds EL25295 & EL9608 other project(s) adjacent to our site Crocodile Gold & Territory Uranium. The area has a Pastoral Lease currently operating & includes the Gas pipeline.

### TITLE HISTORY

Our research has indicated since the early 1870's the "Pine Creek Orogen" has attracted vast interest from persons to corporations. A brief reflection of the past decades *[information sort from previous tenures]* as recapitulated below:

1977 Geopeko flew an aeromagnetic survey over the EL 9375.  
1980's W.R Grace Australia Ltd geological photo mapping completed  
1982 Fisher with limited follow up rock chip sampling  
1984 & 1991 WMC (Mount Ringwood Joint Venture)  
1986 & 1986 Warren identified 250 x 50 area of strong anomalism  
1988 Golden Plateau identified the Conglomerate prospect  
1996/97 Acacia Resources conducted geochemical on previously identified anomalous gold

## PHYSIOGRAPHY & ACCESS

The Northern Territory, where the Proterozoic geology is spectacularly scenic. In the east, the unmetamorphosed Palaeo- to Mesoproterozoic strata of the McArthur basin host a major zinc deposit and the oldest live oil. Further south and west, Proterozoic basement blocks are surrounded by Phanerozoic sedimentary basins containing major artesian water resources [Mines data sighted]. The particular area of interest is within the "Pine Creek Orogen". Access to the site is by existing tracks already established in the area; We acknowledge & are conscious of the gas pipeline which runs through the EL.

### 12.4.2 Geological Setting, Exploration Mining History & Exploration rationale

#### Geological Setting

This Exploration Licence EL27964 is located off the Stuart Highway, approximately 20km South of the Adelaide River Township. Current occupiers of the area hold "Pastoral Lease" over the property [Ringwood Station] which operate cattle station.

#### Exploration Mining history & Exploration Rationale

As previously stated we have been exploring within the "Pine Creek Orogen" region, of which gold production in the Orogen region between 1987 & 2007 has been recorded 79.3 t Au. Since the early 1800's miners have been exploring throughout the area, but war, depression & harsh terrain impeded on the success of mining within these areas. Recent history of this area at a glance

1986 – 2001 EL9370 ANGLOGOLD AUSTRALASIA

1996 – 99 Acacia Resources held tenure & sort geochemical sampling over anomalous gold results

1999 – 01 AngloGold held licences & mainly involved rehabilitation of area as differences within company structure arose

Current market values of minerals remains to be on the "Up" as numerous markets around the world are volatile. Woods Investments mobilization [set up] of the lease commenced late due to the severe "Wet Season" the Northern Territory encountered in December – April 2011. Access onto the lease was not available until early May 2011 as Woods Investments did not want to make a further negative impact on the environment with our operations. Our aim during the past four months has been to establish a tidy camp refer attachment B; purchase & delivery of modern plant & equipment to the site. As advised our strategy remains to "Project Manage" from commencement by documenting, videoing & photograph all our operations. High priority with our activities is the environment & safety of operations.

#### 4.4.3 Exploration Index & Map

TENEMENT	TENEMENT #	BLOCKS	Grant date	Latitude	Longitude
Goldcore	EL27964	6	24 Nov 10	13°1542.71S	131°2009.85E

Map attached

#### 4.4.4 Geological activities and office studies

To date no significant findings majority of exploration involved was the initial set up of the camp  
With minimum time allocated to exploration due to limited access of area from “Big Wet Season”

#### 4.4.5 Remote Sensing

Not applicable in this report

#### 4.4.6 Geophysical activities

Not applicable in this report

#### 4.4.7 Surface geochemistry

Only geological surface surveys conducted to date were soil samples which were bagged [2kg] & sent to NT Environmental Laboratories in Darwin NT. Upon return of the reports attained from the sample bags “No high” mineral content was revealed from the analysis. To keep cost of “soil Sampling “ to a minimum our methodology changed from original concept as we decided it was more cost efficient to complete long trenches of 20mtr x 1.5 deep & attain soil samples 1 meter apart running parallel :

Report code: GC1 [code NT23076]					Project: Woods Investments		
Elements		Au1	Au2	Au3	AuR1	AuR2	AuR3
ID	Distance	FAI g/t	FAI g/t	FAI g/t	FAI g/t	FAI g/t	FAI g/t
GC1 - 1	1 mtr	0.07	--	--	--	--	--
GC1 - 2	2 mtr	0.02	--	--	--	--	--
GC1 - 3	3 mtr	<0.01	--	--	--	--	--
GC1 - 4	4 mtr	<0.01	--	--	--	--	--
GC1 - 5	5 mtr	<0.01	--	--	--	--	--
GC1 - 6	6 mtr	<0.01	--	--	--	--	--
GC1 - 7	7 mtr	<0.01	--	--	--	--	--

Report code: GC2 [Code NT23076]					Project: Woods Investments		
Elements		Au1	Au2	Au3	AuR1	AuR2	AuR3
ID	Distance	FAI g/t	FAI g/t	FAI g/t	FAI g/t	FAI g/t	FAI g/t
GC2 - 2	2 mtr	<0.01	--	--	--	--	--
GC2 - 4	4 mtr	0.01	--	--	--	--	--
GC2 - 6	6 mtr	0.01	--	--	--	--	--
GC2 - 8	8 mtr	<0.01	--	--	--	--	--
GC2 - 10	10 mtr	<0.01	--	--	--	--	--
GC2 - 12	12 mtr	<0.01	--	--	--	--	--
GC2 - 14	14 mtr	<0.01	--	--	--	--	--
GC2 - 16	16 mtr	<0.01	--	--	--	--	--
GC2 - 18	18 mtr	<0.01	--	--	--	--	--
GC2 - 20	20 mtr	<0.01	--	--	--	--	--



Report code GC3 [Code NT23076]					Project: Woods Investments		
Elements		Au1	Au2	Au3	AuR1	AuR2	AuR3
ID	Distance	FAI g/t	FAI g/t	FAI g/t	FAI g/t	FAI g/t	FAI g/t
GC3 - 2	2mtr	<0.01	--	--	--	--	--
GC3 - 4	4 mtr	<0.01	--	--	--	--	--
GC3 - 6	6 mtr	<0.01	--	--	--	--	--
GC3 - 8	8 mtr	<0.01	--	--	--	--	--
GC3 -10	10 mtr	<0.01	--	--	--	--	--
GC3 - 12	12 mtr	<0.01	--	--	--	--	--
GC3 - 14	14 mtr	<0.01	--	--	--	--	--
GC3 - 16	16 mtr	<0.01	--	--	--	--	--
GC3 - 18	18 mtr	<0.01	--	--	--	--	--
GC3 - 20	20 mtr	<0.01	--	--	--	--	--

Report code GC4 [Code NT23078]					Project: Woods Investments		
Elements		Au1	Au2	Au3	AuR1	AuR2	AuR3
ID	Distance	FAI g/t	FAI g/t	FAI g/t	FAI g/t	FAI g/t	FAI g/t
GC4 - 2	2mtr	<0.01	--	--	--	--	--
GC4 - 4	4 mtr	<0.01	--	--	--	--	--
GC4 - 6	6 mtr	<0.01	--	--	--	--	--
GC4 - 8	8 mtr	<0.01	--	--	--	--	--
GC4 - 10	10 mtr	<0.01	--	--	--	--	--
GC4 - 12	12 mtr	<0.01	--	--	--	--	--
GC4 - 14	14 mtr	<0.01	--	--	--	--	--
GC4 - 16	16 mtr	<0.01	--	--	--	--	--
GC4 - 18	18 mtr	<0.01	--	--	--	--	--
GC4 - 20	20 mtr	<0.01	--	--	--	--	--

Report code GC5 [Code NT23078]					Project: Woods Investments		
Elements		Au1	Au2	Au3	AuR1	AuR2	AuR3
ID	Distance	FAI g/t	FAI g/t	FAI g/t	FAI g/t	FAI g/t	FAI g/t
GC5 - 2	2mtr	<0.01	--	--	--	--	--
GC5 - 4	4 mtr	<0.01	--	--	--	--	--
GC5 - 6	6 mtr	<0.01	--	--	--	--	--
GC5 - 8	8 mtr	<0.01	--	--	--	--	--
GC5 - 10	10 mtr	<0.01	--	--	--	--	--
GC5 - 12	12 mtr	<0.01	--	--	--	--	--
GC5 - 14	14 mtr	<0.01	--	--	--	--	--
GC5 - 16	16 mtr	<0.01	--	--	--	--	--
GC5 - 18	18 mtr	<0.01	--	--	--	--	--
GC5 - 20	20 mtr	<0.01	--	--	--	--	--

#### 4.4.8 Drilling

No exploration drilling occurred within this period 24 November 2010 to 23 November 2011

#### 4.4.9 Geotechnical studies

As previously advised Woods Investments this year we have only commenced preliminary exploration of the tenure conducting “Soil” sampling of 1.5mtr depth of the soil in the lease as depicted in attachment D Costean location.

#### 4.4.10 Resources and reserve estimation/modeling

Not applicable in this report

### 5: Conclusion and recommendations

Woods Investments first year of exploration was a learning curve & we did not accomplish all our goals in the first year due to significant “Wet Season”; the main goal achieved was the mobilisation of a temporary camp of which will be accessible early in the forthcoming “Dry Season” 2012.

### 6: References

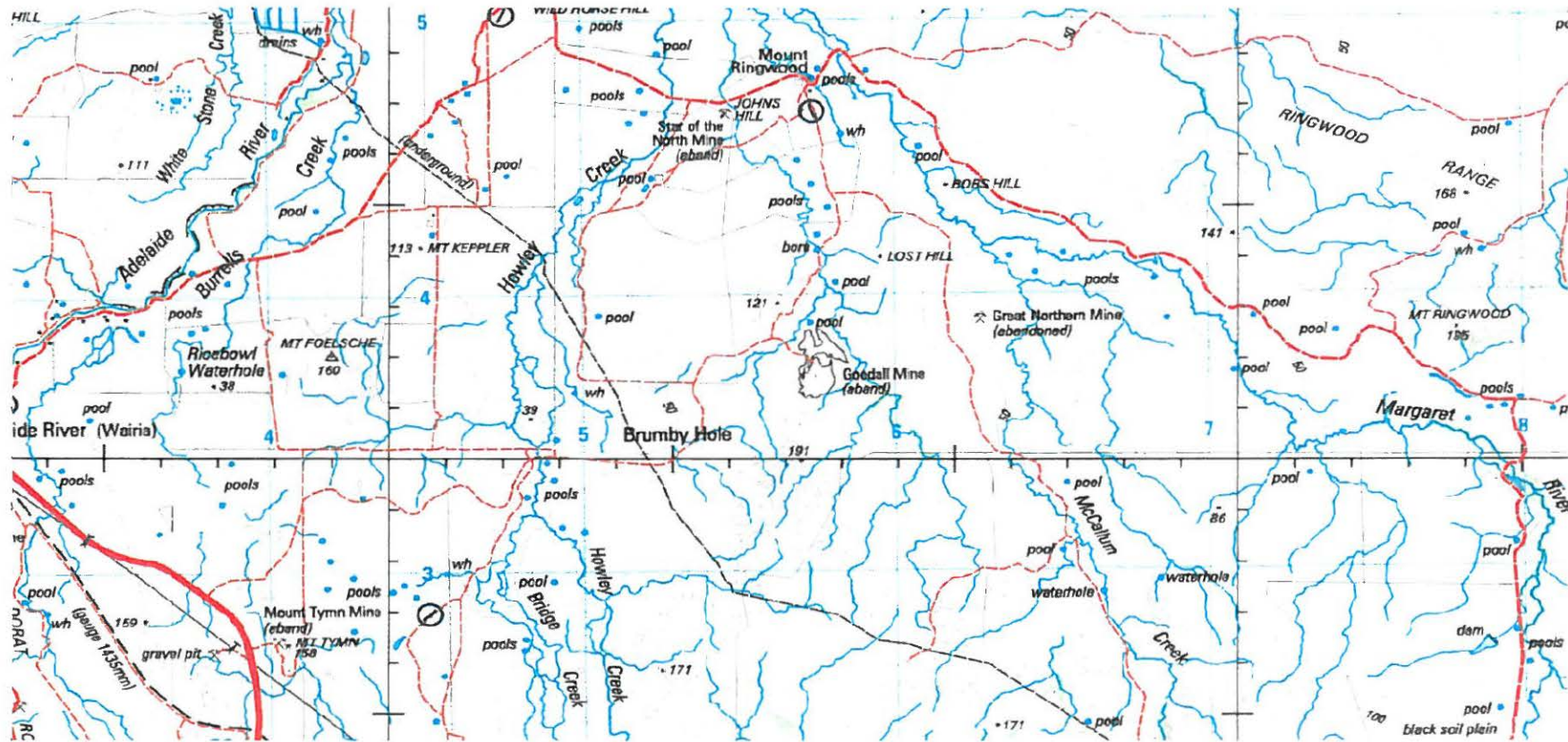
Mines & Energy  
Department of Sustainability, Environment Water, Pollution & Communities  
Previous EL Annual Reports  
WA - MTR software  
Internet – research sites

### 7: Photographs other than those in the body of the text



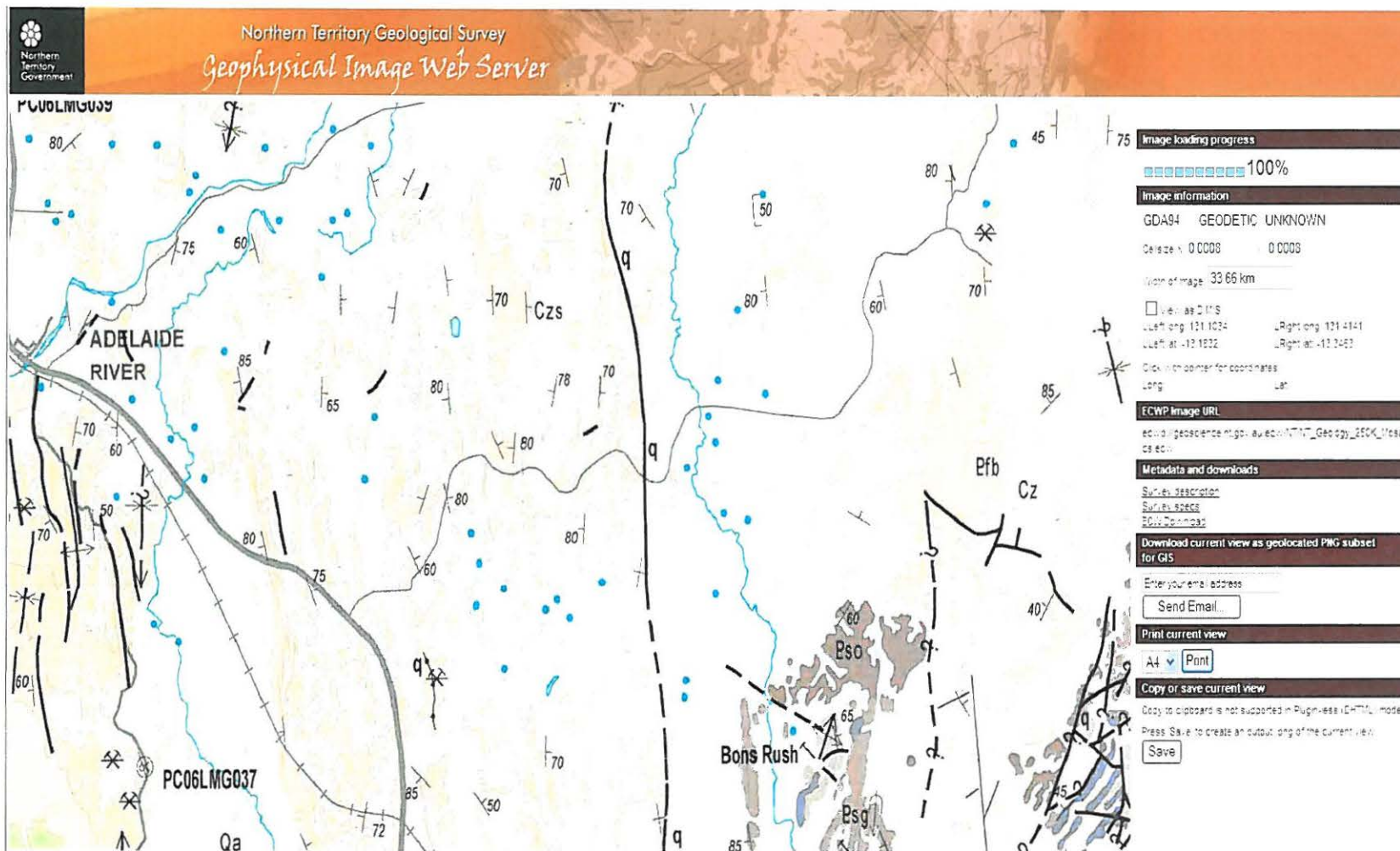


# WOODS INVESTMENTS (NT) PTY LTD



KEY: GEOLOGY MAP OF SITE – EL 27964 LOCATED SOUTH WEST OF GOODALL MINE [ABAND]  
NORTH EAST OF BRUMBY HOLE

# WOODS INVESTMENTS (NT) PTY LTD



IDENT	Job numbe	Project	coc	Au1	Au2	Au3	AuR1	AuR2	AuR3
UNITS				g/T	g/T	g/T	g/T	g/T	g/T
SCHEME				FA1	FA1	FA1	FA1	FA1	FA1
GC4 1	NT23078	Viper		<0.01	--	--	--	--	--
GC4 2	NT23078	Viper		<0.01	--	--	--	--	--
GC4 3	NT23078	Viper		<0.01	--	--	--	--	--
GC4 4	NT23078	Viper		<0.01	--	--	--	--	--
GC4 5	NT23078	Viper		<0.01	--	--	--	--	--
GC4 6	NT23078	Viper		<0.01	--	--	--	--	--
GC4 7	NT23078	Viper		<0.01	--	--	--	--	--
GC4 8	NT23078	Viper		<0.01	--	--	--	--	--
GC4 9	NT23078	Viper		<0.01	--	--	--	--	--
GC4 10	NT23078	Viper		<0.01	--	--	--	--	--
GC5 1	NT23078	Viper		<0.01	--	--	--	--	--
GC5 2	NT23078	Viper		<0.01	--	--	--	--	--
GC5 3	NT23078	Viper		<0.01	--	--	--	--	--
GC5 4	NT23078	Viper		<0.01	--	--	--	--	--
GC5 5	NT23078	Viper		<0.01	--	--	--	--	--
GC5 6	NT23078	Viper		<0.01	--	--	--	--	--
GC5 7	NT23078	Viper		<0.01	--	--	--	--	--
GC5 8	NT23078	Viper		<0.01	--	--	--	--	--
GC5 9	NT23078	Viper		<0.01	--	--	--	--	--
GC5 10	NT23078	Viper		<0.01	--	--	--	--	--

IDENT	Job number	Project code	Au1	Au2	Au3	AuR1	AuR2
UNITS			g/T	g/T	g/T	g/T	g/T
SCHEME			FA1	FA1	FA1	FA1	FA1
GC1 1	NT23076	Viper	0.07	--	--	--	--
GC1 2	NT23076	Viper	0.02	--	--	--	--
GC1 3	NT23076	Viper	<0.01	--	--	--	--
GC1 4	NT23076	Viper	<0.01	--	--	--	--
GC1 5	NT23076	Viper	<0.01	--	--	--	--
GC1 6	NT23076	Viper	<0.01	--	--	--	--
GC1 7	NT23076	Viper	<0.01	--	--	--	--
GC2 2	NT23076	Viper	<0.01	--	--	--	--
GC2 4	NT23076	Viper	0.01	--	--	--	--
GC2 6	NT23076	Viper	0.01	--	--	--	--
GC2 8	NT23076	Viper	<0.01	--	--	--	--
GC2 10	NT23076	Viper	<0.01	--	--	--	--
GC2 12	NT23076	Viper	<0.01	--	--	--	--
GC2 14	NT23076	Viper	<0.01	--	--	--	--
GC2 16	NT23076	Viper	<0.01	--	--	--	--
GC2 18	NT23076	Viper	<0.01	--	--	--	--
GC2 20	NT23076	Viper	<0.01	--	--	--	--
GC3 2	NT23076	Viper	<0.01	--	--	--	--
GC3 4	NT23076	Viper	<0.01	--	--	--	--
GC3 6	NT23076	Viper	<0.01	--	--	--	--
GC3 8	NT23076	Viper	<0.01	--	--	--	--
GC3 10	NT23076	Viper	<0.01	--	--	--	--
GC3 12	NT23076	Viper	<0.01	--	--	--	--
GC3 14	NT23076	Viper	<0.01	--	--	--	--
GC3 16	NT23076	Viper	<0.01	--	--	--	--
GC3 18	NT23076	Viper	<0.01	--	--	--	--
GC3 20	NT23076	Viper	<0.01	--	--	--	--