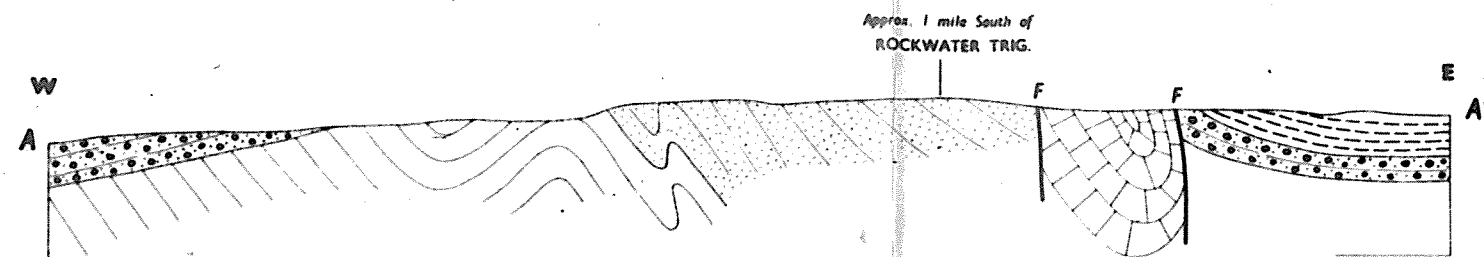


GEOLOGICAL SECTIONS ACROSS THE PEAKE AND DENISON RANGES

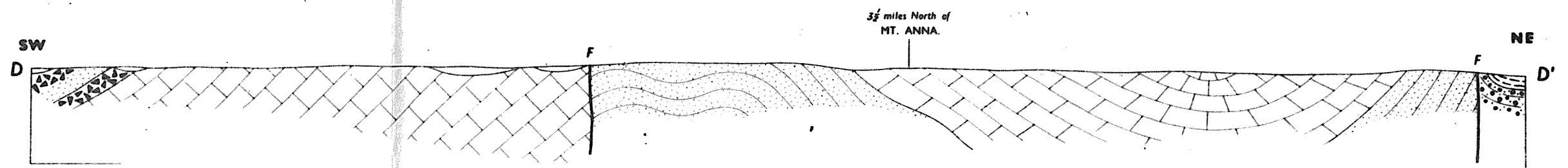
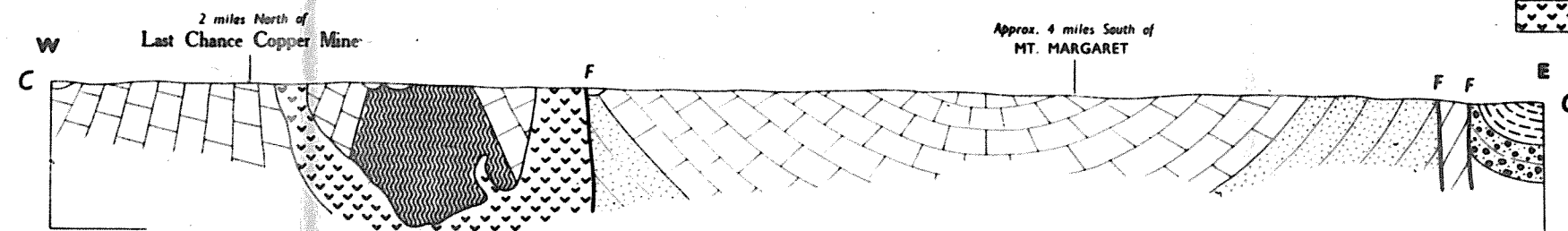
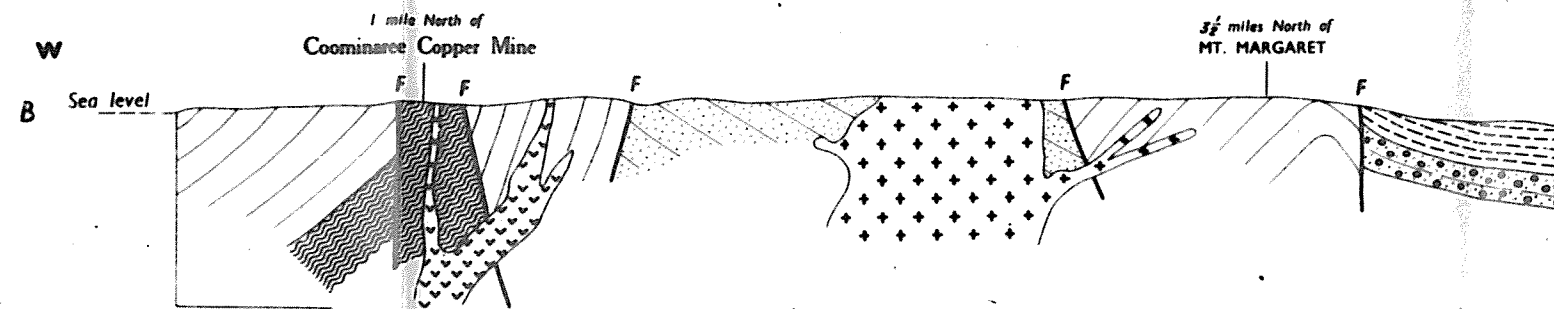
X-SEC. 1



REFERENCE

MESOZOIC	CAINOZOIC RECENT	Alluvium, dunes, saline flats.
	CRETACEOUS	Marine shales with fossiliferous beds.
	? JURASSIC	Cross-bedded sandstone and conglomerate
	PROTEROZOIC (ADELPHIDE SYSTEM)	
	STURTIAN SERIES	Quartzites
	TILLITE	Tillite
	TORRENSIAN SERIES	Dolomite and slates, magnesite quartzites
	WILLOUGHAN SERIES	"Mt. Margaret Quartzites"
		"Duff Creek Formation": quartzites, slates and dolomites.
	? ARCHAIC	"Peake Series": slates, schists, gneisses, migmatites.
IGNEOUS ROCKS		
	Granite	
	Basic dykes	

F—Fault



L. W. Parkin, 1954.