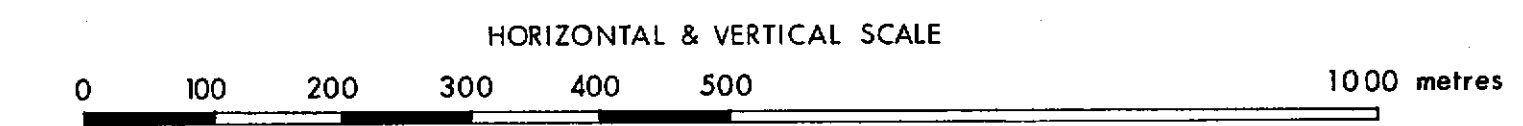


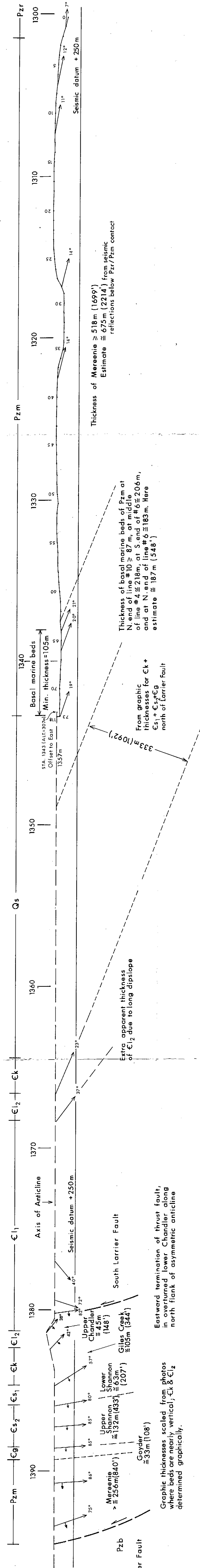
\* Corrected graphically, width of Qs measured here was approximately doubled by offsets perpendicular to seismic line 19



NOTE: TRUE DIPS SHOWN IN | | WHERE CORRECTIONS FOR APPARENT DIPS WERE NECESSARY

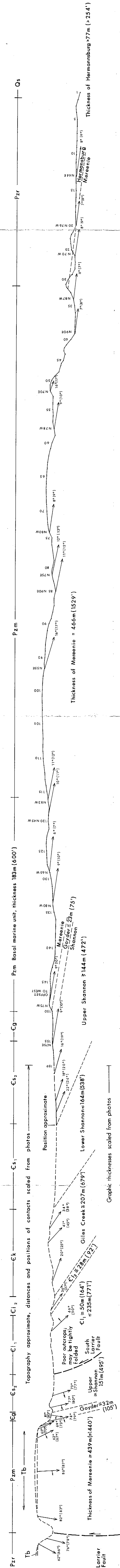
SEISMIC LINE 5 (north end)

SSE



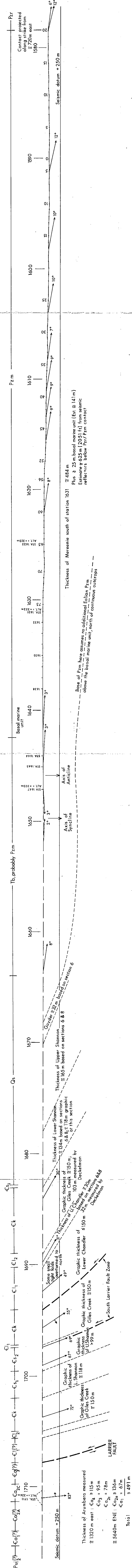
SEISMIC LINE 6 (north end) THIS LINE WAS NOT SHOT

SSE



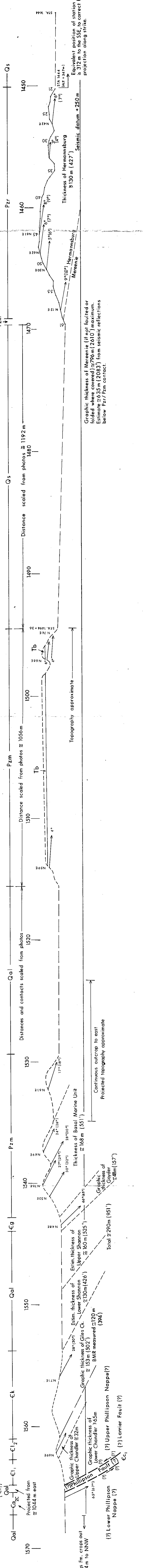
SEISMIC LINE 7 (north end)

SSE



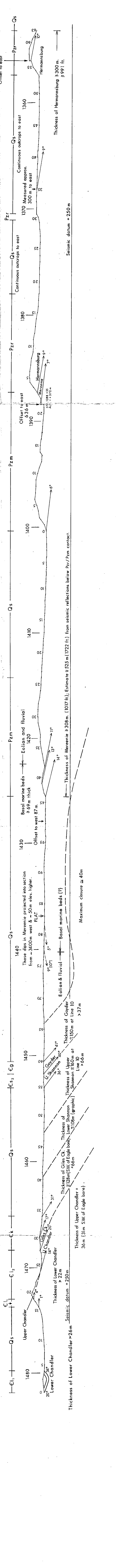
SEISMIC LINE 8 (north end)

SSE



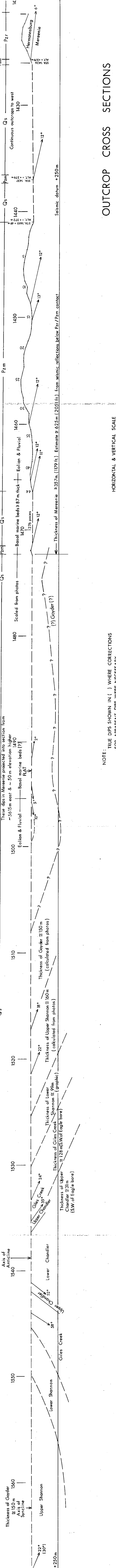
SEISMIC LINE 9 (north end)

SSE



SEISMIC LINE 10 (north end)

SSE



NOTE: THE SIX SUNDY, N.L. J. WERE CORRECTED FOR APPARENT DIPS WHERE NECESSARY

HORIZONTAL & VERTICAL SCALE



OUTCROP CROSS SECTIONS

CAMEL FLAT AREA - OP 189

NORTHERN TERRITORY GEOLOGICAL SURVEY

R.O. Cook, Oct. 1981 (revised Oct. 1982)

PR 84/125