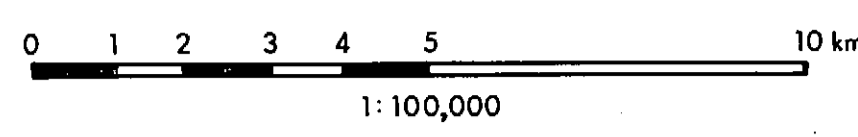
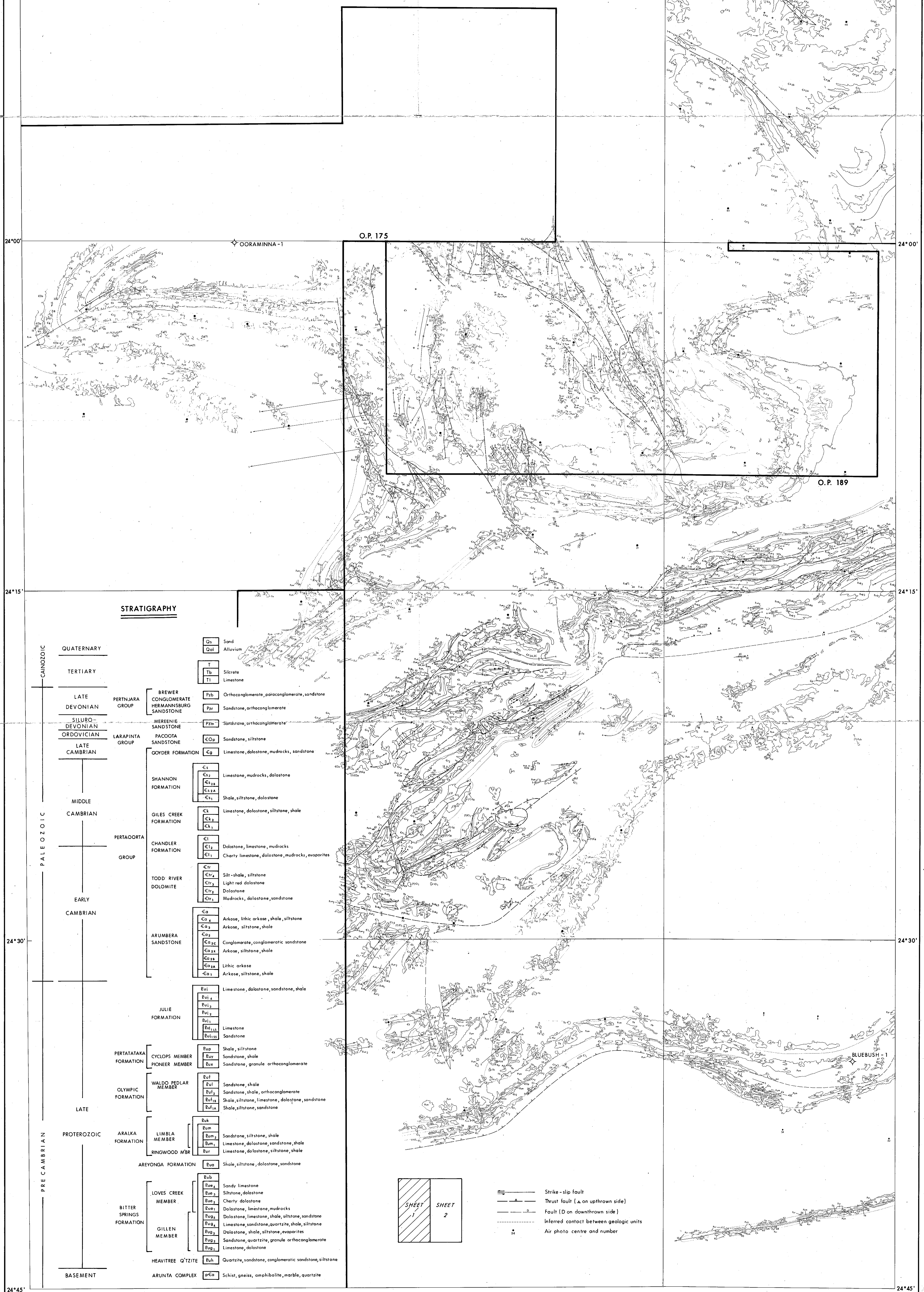


MAGELLAN PETROLEUM AUSTRALIA LIMITED

BEDROCK GEOLOGIC MAP
NORTHEASTERN AMADEUS BASIN

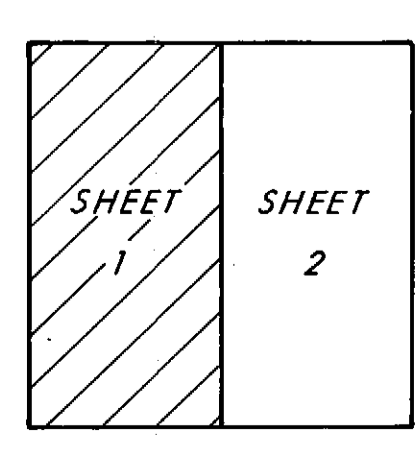


SHEET 1



STRATIGRAPHY

CENOZOIC	QUATERNARY	Gs	Sand
		Qal	Alluvium
TERTIARY		T	Silcrete
		Tb	Limestone
		Tl	Limestone
LATE DEVONIAN	PERTNJARA GROUP	Pzb	Orthoconglomerate, paraconglomerate, sandstone
		Pzr	Sandstone, orthoconglomerate
SILURO-DEVONIAN	MEREENIE SANDSTONE	Pzm	Sandstone, orthoconglomerate
	LARAPINTA GROUP	PCO	Sandstone, siltstone
LATE CAMBRIAN	GOYDER FORMATION	Gg	Limestone, dolostone, mudrocks, sandstone
	SHANNON FORMATION	Cs	Limestone, mudrocks, dolostone
MIDDLE CAMBRIAN		Cs2	Limestone, mudrocks, dolostone
		Cs2A	Shale, siltstone, dolostone
PERTAOORTA GROUP	GILES CREEK FORMATION	Ck	Limestone, dolostone, siltstone, shale
		Ck2	Limestone, dolostone, siltstone, shale
EARLY CAMBRIAN	CHANDLER FORMATION	C1	Dolostone, limestone, mudrocks
		C11	Cherty limestone, dolostone, mudrocks, evaporites
	TODD RIVER DOLOMITE	Cv	Silt-shale, siltstone
		Cv2	Light red dolostone
		Cv3	Dolostone
		Cv4	Mudrocks, dolostone, sandstone
	ARUMBERA SANDSTONE	Ca	Arkose, lithic arkose, shale, siltstone
		Ca2	Arkose, siltstone, shale
		Ca2c	Conglomerate, conglomeratic sandstone
		Ca2d	Arkose, siltstone, shale
		Ca2e	Lithic arkose
		Ca2f	Arkose, siltstone, shale
	JULIE FORMATION	Ej	Limestone, dolostone, sandstone, shale
		Ej1	Limestone
		Ej2	Sandstone
		Ej3	Sandstone
	PERTATATAKA FORMATION	Eup	Shale, siltstone
		Euv	Sandstone, shale
	OLYMPIC FORMATION	Euf	Sandstone, shale
		Euf1	Sandstone, shale, orthoconglomerate
		Euf2	Shale, siltstone, limestone, dolostone, sandstone
		Euf3	Shale, siltstone, sandstone
	ARALKA FORMATION	Eua	Sandstone, siltstone, shale
		Eub	Limestone, dolostone, sandstone, shale
		Euc	Limestone, dolostone, siltstone, shale
		Eud	Shale, siltstone, dolostone, sandstone
	BITTER SPRINGS FORMATION	Euf	Sandy limestone
		Euf1	Siltstone, dolostone
		Euf2	Cherty dolostone
		Euf3	Dolostone, limestone, mudrocks
		Euf4	Dolostone, limestone, shale, siltstone, sandstone
		Euf5	Limestone, sandstone, quartzite, shale, siltstone
		Euf6	Dolostone, shale, siltstone, evaporites
		Euf7	Sandstone, quartzite, granule orthoconglomerate
		Euf8	Limestone, dolostone
		Euf9	Quartzite, sandstone, conglomeratic sandstone, siltstone
	ARUNTA COMPLEX	Eua	Schist, gneiss, amphibolite, marble, quartzite



- Strike-slip fault
- Thrust fault (▲ on upthrown side)
- Fault (D on downthrown side)
- Inferred contact between geologic units
- Air photo centre and number

134°45'

135°00'

135°30'

23°45'

23°45'

24°00'

24°00'

24°15'

24°15'

24°30'

24°30'

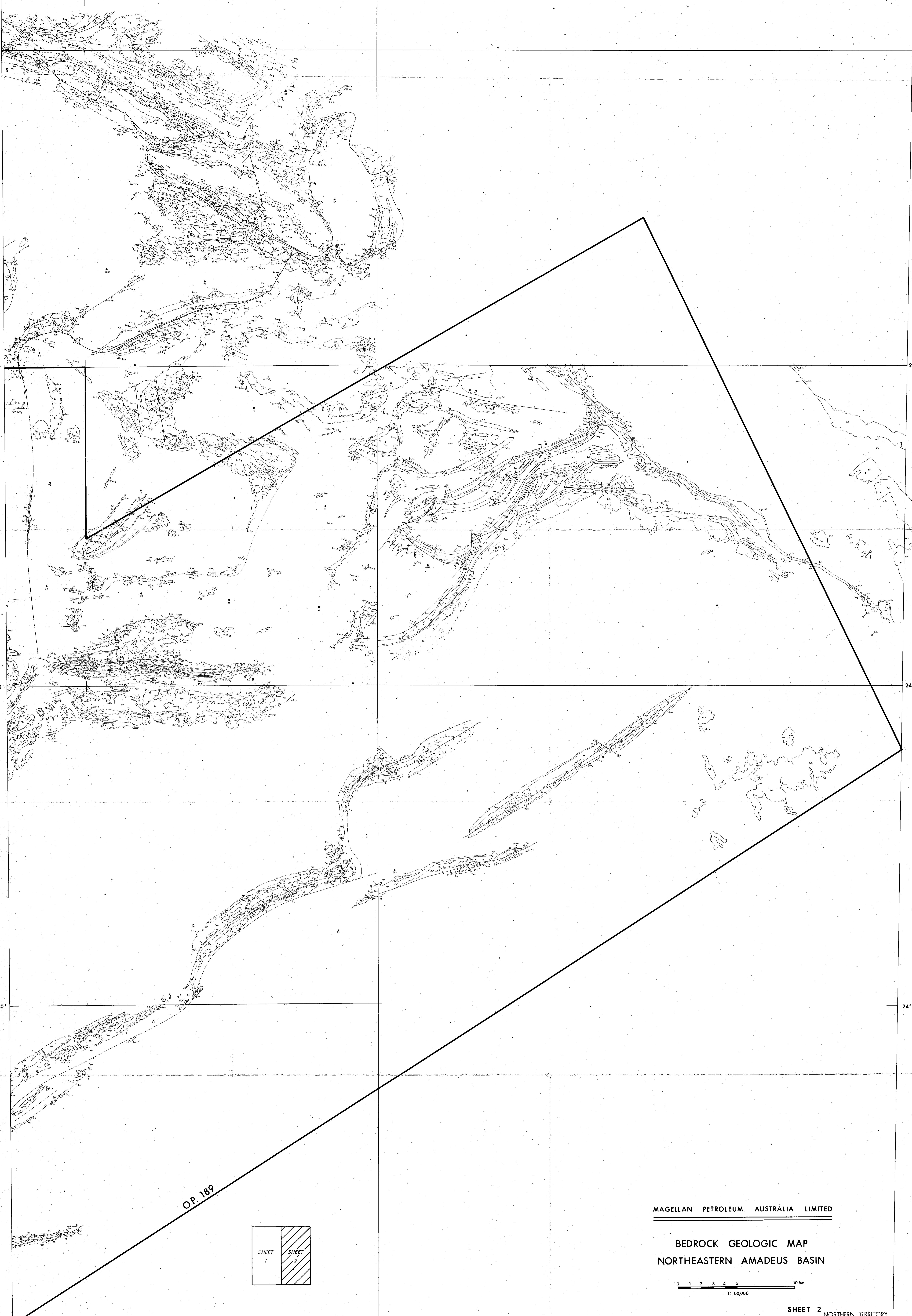
24°45'

24°45'

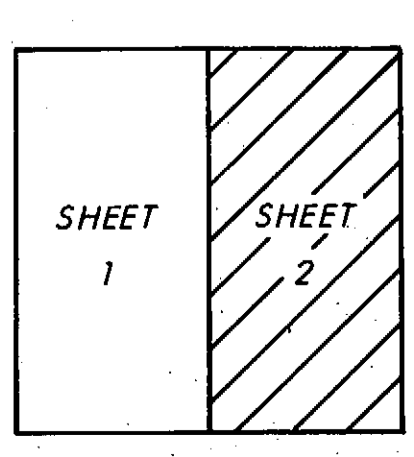
134°45'

135°00'

135°30'

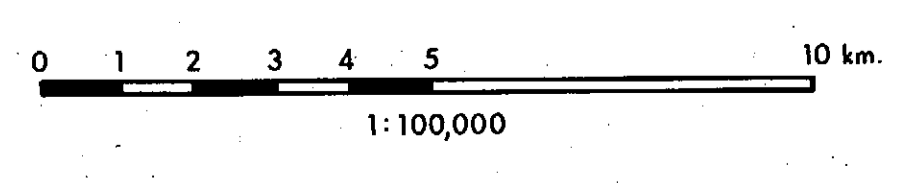


OP. 189



MAGELLAN PETROLEUM AUSTRALIA LIMITED

BEDROCK GEOLOGIC MAP
NORTHEASTERN AMADEUS BASIN



SHEET 2
NORTHERN TERRITORY
GEOLOGICAL SURVEY

PR 84/25