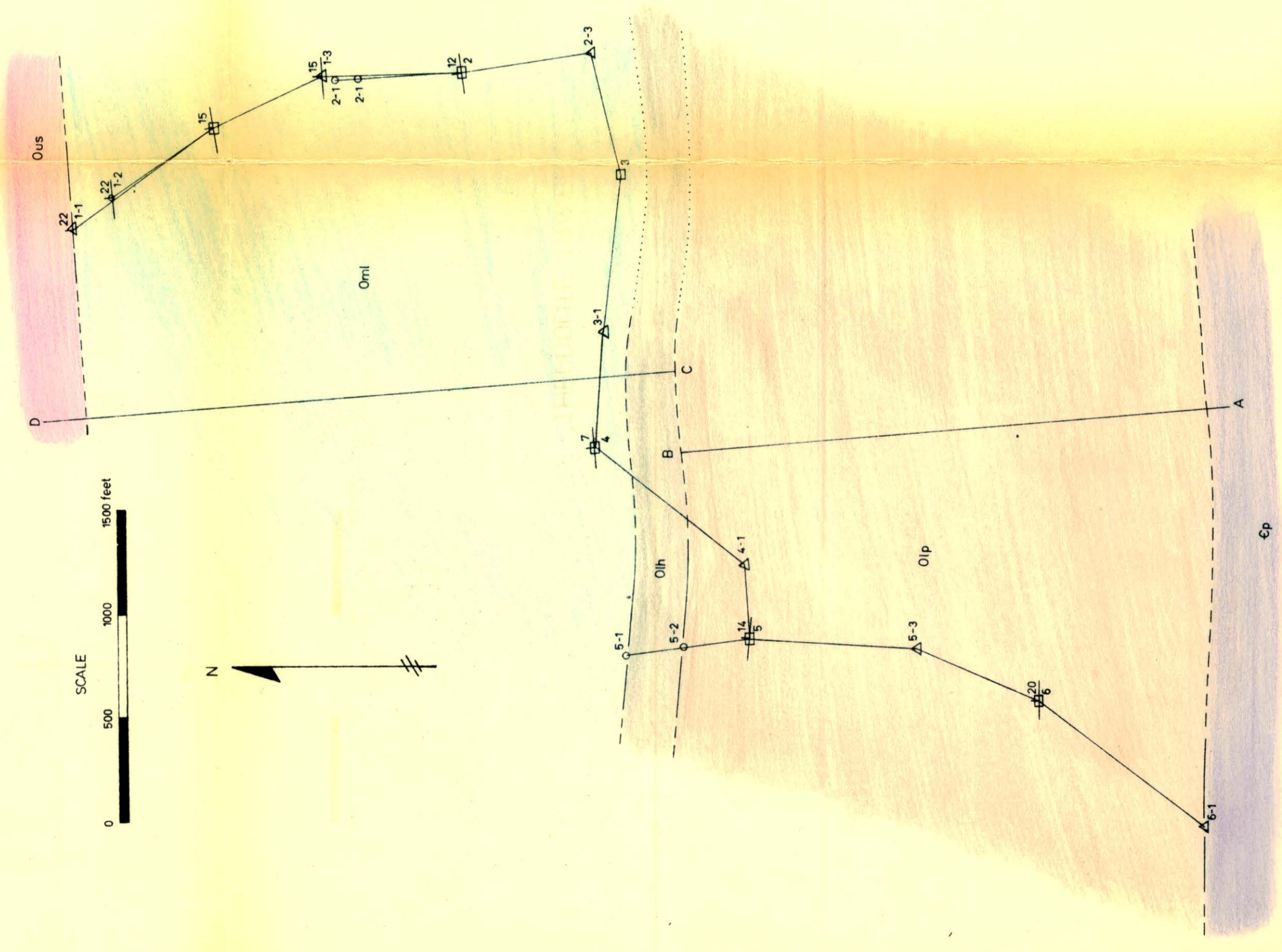
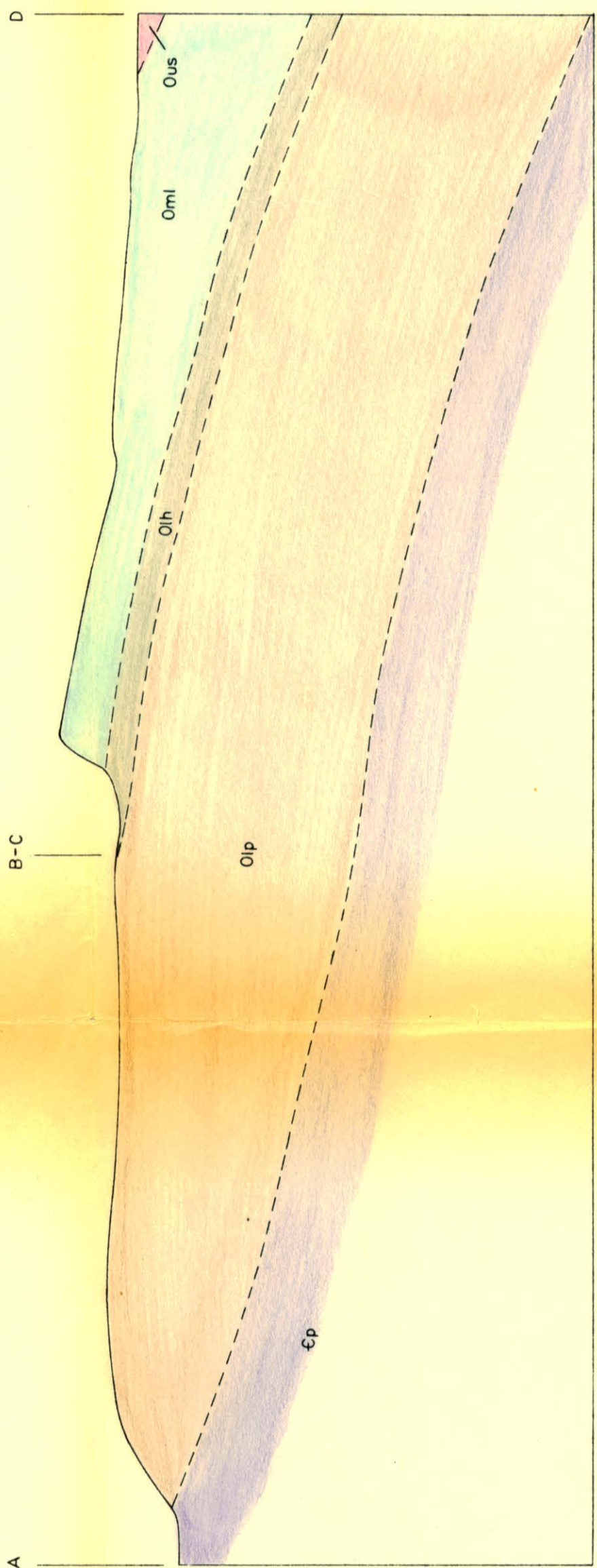


THEODOLITE TRAVERSE

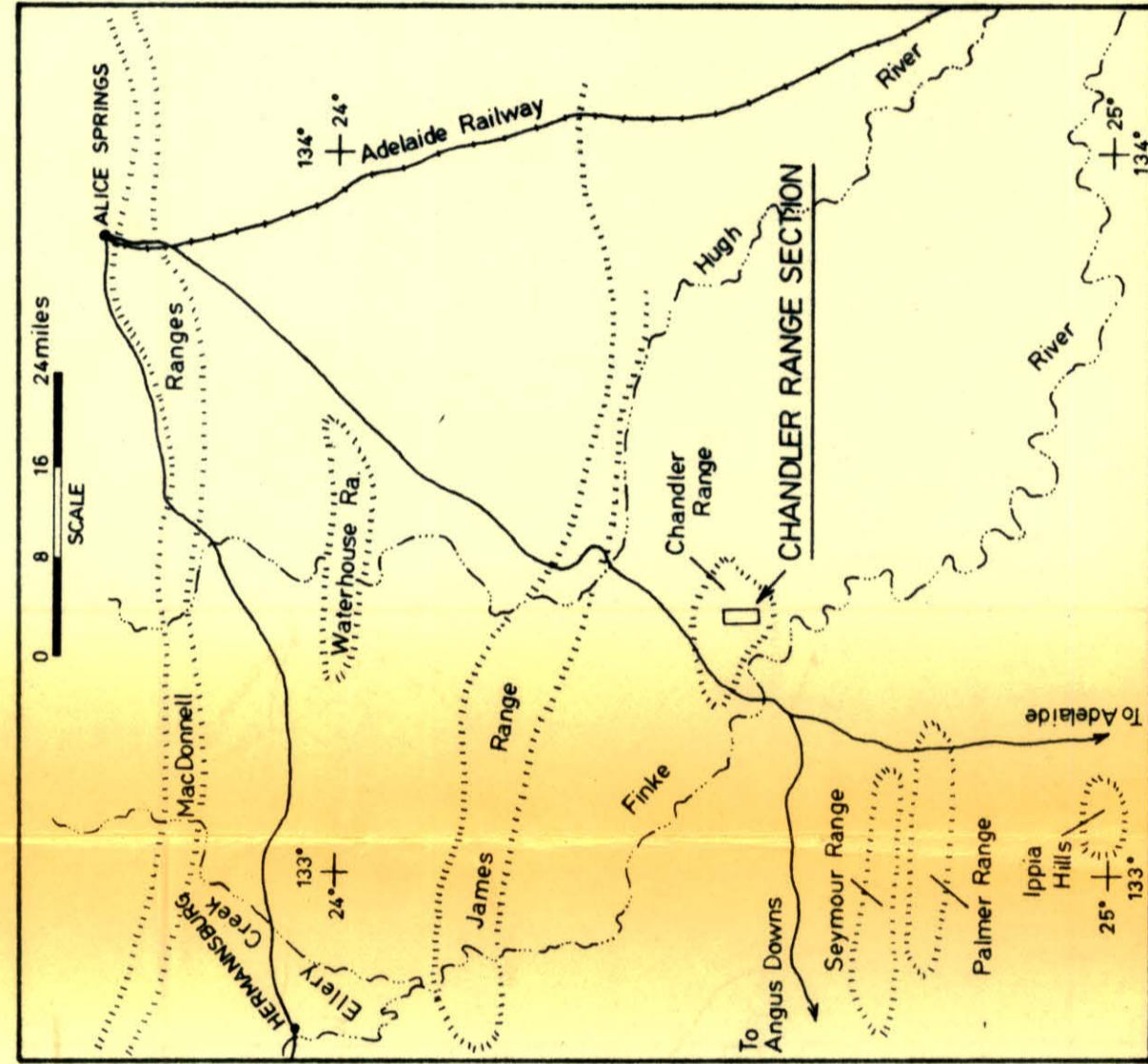


GEOLOGIC CROSS-SECTION ALONG LINES A-B AND C-D

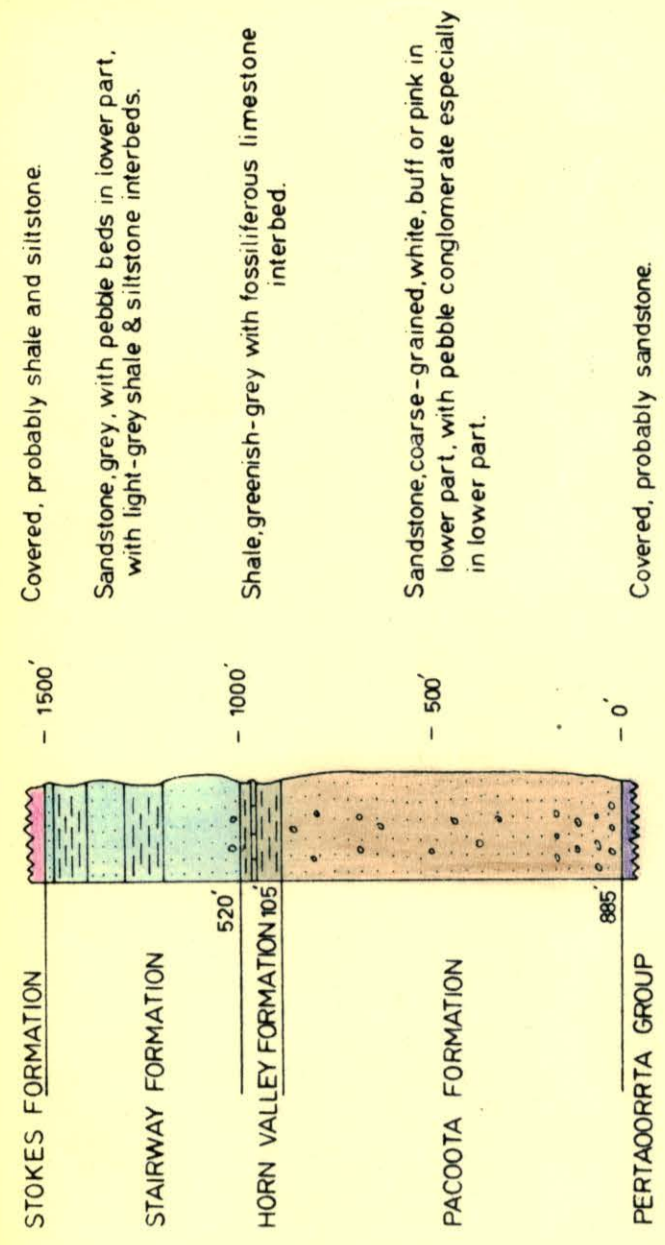


Vertical & horizontal scales : 1 inch = 500 feet

INDEX MAP



GENERALIZED COLUMNAR SECTION



CHANDLER RANGE SECTION AMADEUS BASIN

EXPLANATION

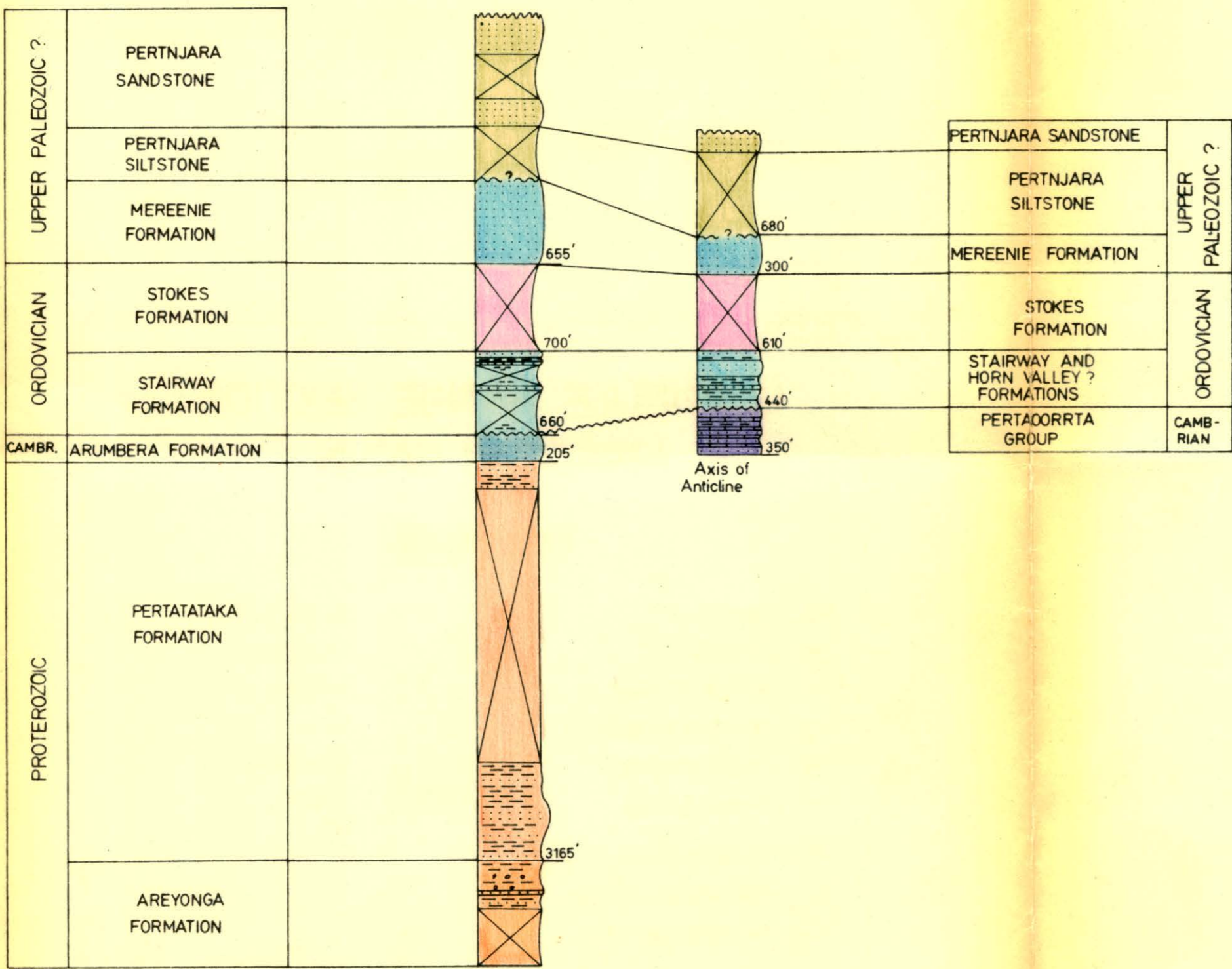
- Gal Alluvium
- Ous Stokes formation
- Omi Stairway formation
- Olh Horn Valley formation
- Olp Pacoota formation
- Ep Pertadorrta group
- Theodolite station
- △ Rod station, turning point
- Rod station, side shot
- Geologic contact
- Strike & dip
- Sandstone
- Shale
- Conglomerate
- Limestone

Geologist : R.M. Hopkins Jr.  
Instrument man : F.C. King  
Rod man : N.B. Johns

August 1962

Prb2/18

PR62/18



↑ 1  
SOUTHWEST SEYMOUR RANGE

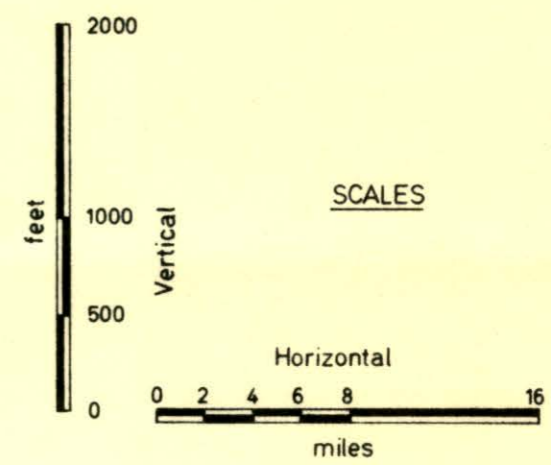
↑ 2  
EAST SEYMOUR RANGE

### EAST-WEST CORRELATION PANEL SEYMOUR RANGE

DATUM: TOP OF STAIRWAY FORMATION

#### EXPLANATION

- Sandstone, quartzite & conglomerate
- Shale & siltstone
- Limestone & dolomite (- algal - cherty)
- Unconformity

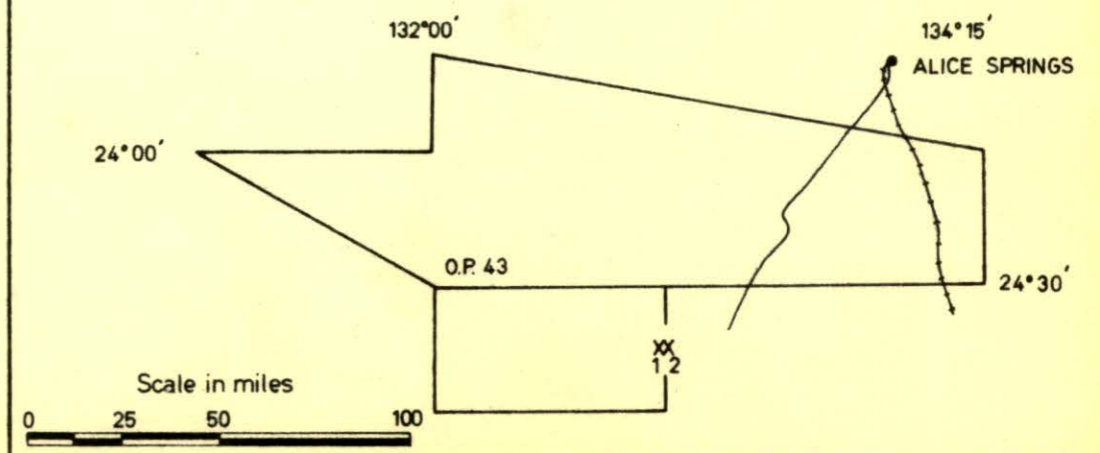


Geology by : R.M.Hopkins Jr.

Compiled by : R.M.Hopkins Jr. & F.C.King

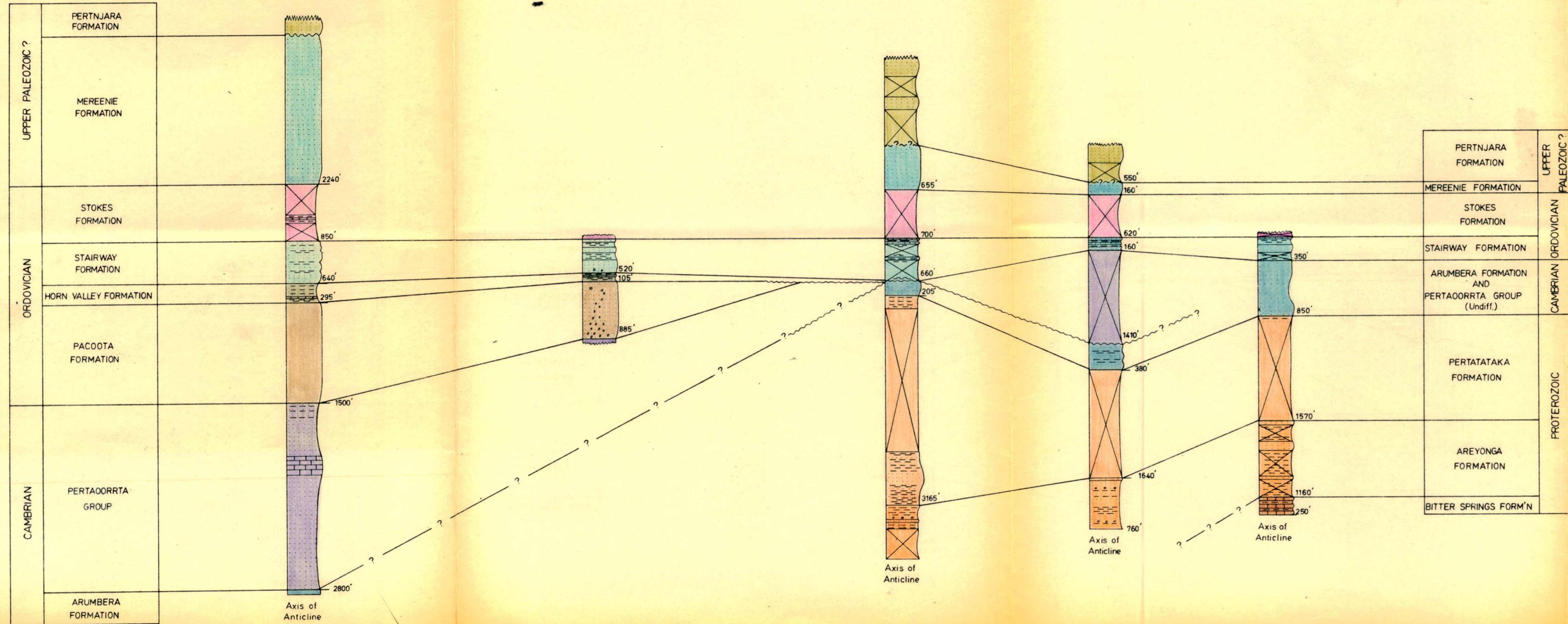
August 1962

#### INDEX MAP



NORTHERN TERRITORY  
GEOLOGICAL SURVEY

Prb2/18



↑1 COMPOSITE MERRICK GULLY & JAMES RANGE 1  
 ↑2 CHANDLER RANGE  
 ↑3 SOUTHWEST SEYMOUR RANGE  
 ↑4 PALMER RANGE  
 ↑5 IPPIA HILLS

### NORTH-SOUTH CORRELATION PANEL SOUTH CENTRAL AMADEUS AREA

DATUM: TOP OF STAIRWAY FORMATION

**EXPLANATION**

- Sandstone, quartzite & conglomerate
- Shale & siltstone
- Limestone & dolomite (-algal - cherty)
- Unconformity

Vertical

feet

Horizontal

miles

Geology by: R.M.Hopkins Jr. & J.W.Gwinn  
 Compiled by: R.M.Hopkins Jr. & F.C.King  
 August 1962

