

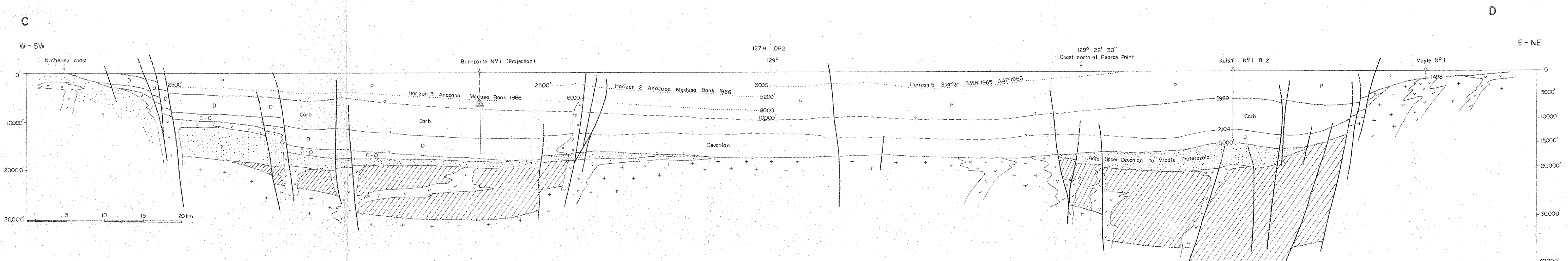
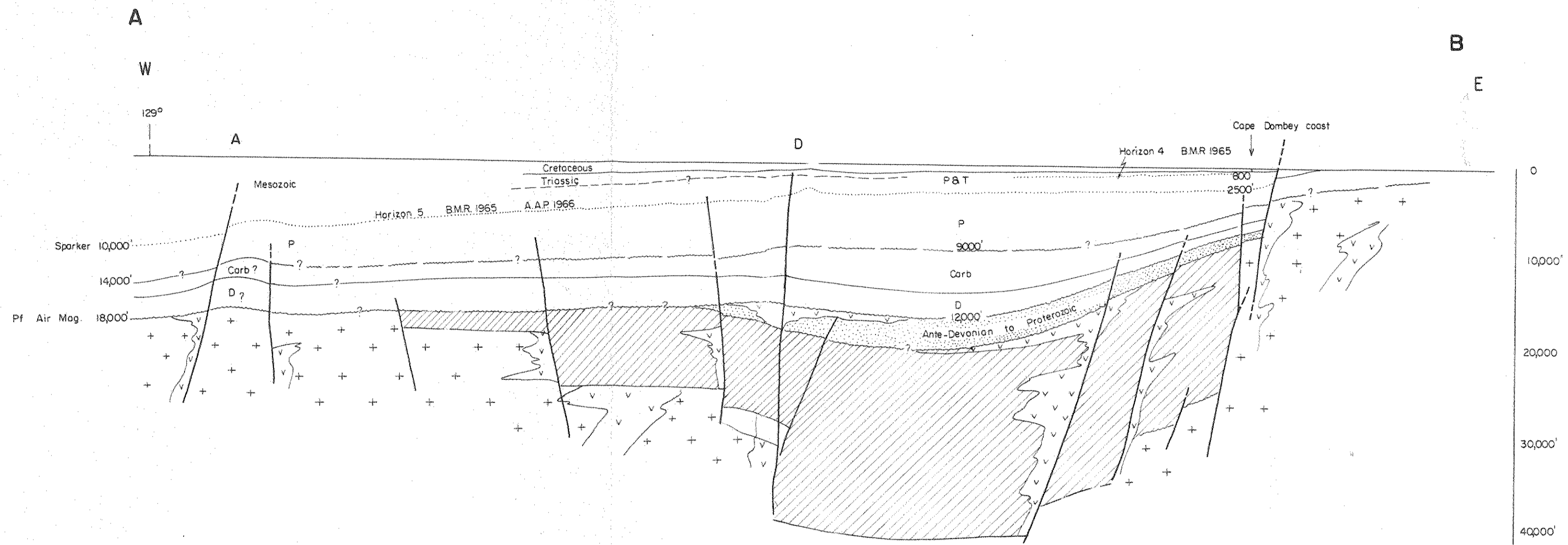
PEI27H

OP 83 - OP2 PEI27H - OP2 GEOLOGICAL SKETCH CROSS SECTION

SCALE : H = 1/250,000
V = 1" = 10,000' 1/120,000

For section location see ENCL 1

APRIL 1967



- Cretaceous
- Triassic and Jurassic
- Permian
- Carboniferous
- Devonian
- Cambro - Ordovician
- Proterozoic (Variable Metamorphism)
- Archean igneous rocks
- Intrusive igneous rocks (Archean to Mesozoic in age?)
- Salt dome or igneous intrusion
- Undifferentiated Mesozoic
- Possible Ante Devonian to Upper Proterozoic rocks