

HAINES SURVEYS

GRAVITY SURVEY SPECIALISTS

1053

OKLO GRAVITY SURVEY

Mithril Resources Ltd.

October - November 2010

PERTH
PO BOX 120
BULLCREEK, WA 6149
PERTH, AUSTRALIA
TEL:(08) 9332 2140
FAX: (08) 9332 2609
INTER: +618 9332 2140

ADELAIDE
PO BOX 196
ALDGATE SA 5154
ADELAIDE, AUSTRALIA
TEL (08) 8370 8779
FAX (08) 8370 8758
INTER: +618 8370 8779

Contents

Introduction	2
Location Diagram	3
Survey and Gravity Base Stations	4
Survey and Gravity Datum	5
GPS Observations and Processing	5
Gravity Observations	6
Point Numbering and Marking	6
Gravity Processing	7 - 9
Results Formats	10
Production Log	11
Repeat Observation Results	11 - 14

Plots

Basil Area	
Station Locations	15
Stations and Bouguer Anomaly Contours	16
Bouguer Anomaly Contours and Zoned Image	17
Black Adder Area	
Station Locations	18
Stations and Bouguer Anomaly Contours	19
Bouguer Anomaly Contours and Zoned Image	20

Introduction

A detail GPS gravity survey designated as Oklo Gravity Survey has been carried out approximately 160 kilometres North-East of Alice Springs in the Northern Territory from 25th October 2010 to the 6th November 2010 on behalf of Mithril Resources Ltd.

The *Basil* area consisted of 240 detail gravity stations in a grid comprising 25 West-East trending lines coincident with GDA94 with a line spacing of 200 metres and station intervals of 200 metres. The lines of irregular length were bounded in the West by GDA94 Zone 53 530400E, in the East by 535000E, in the South by 7408200N and in the North by 7412400N. The line lengths ranged from one station to 4200 metres.

The *Black Adder* area consisted of 355 detail gravity stations in a grid comprising 25 West-East trending lines coincident with GDA94 with a line spacing of 204 metres and station intervals of 200 metres. The lines of irregular length were bounded in the West by GDA94 Zone 53 544000E, in the East by 549800E, in the South by 7421429N and in the North by 7426325N. The line lengths ranged from one station to 4800 metres.

The completed Oklo gravity survey comprised of 1059 stations in 54 lines. All proposed gravity stations were completed. Additional stations were completed throughout the survey areas. Note; some of the stations may have been slightly offset from their planned position due to vegetation and terrain.

There were 36 observations repeated for quality control purposes, giving a repeat percentage of 3.4%.

The Bouguer anomaly processing has been performed using a country rock density of 2.67 g/cc.

Figure 1 shows the location of the survey areas.

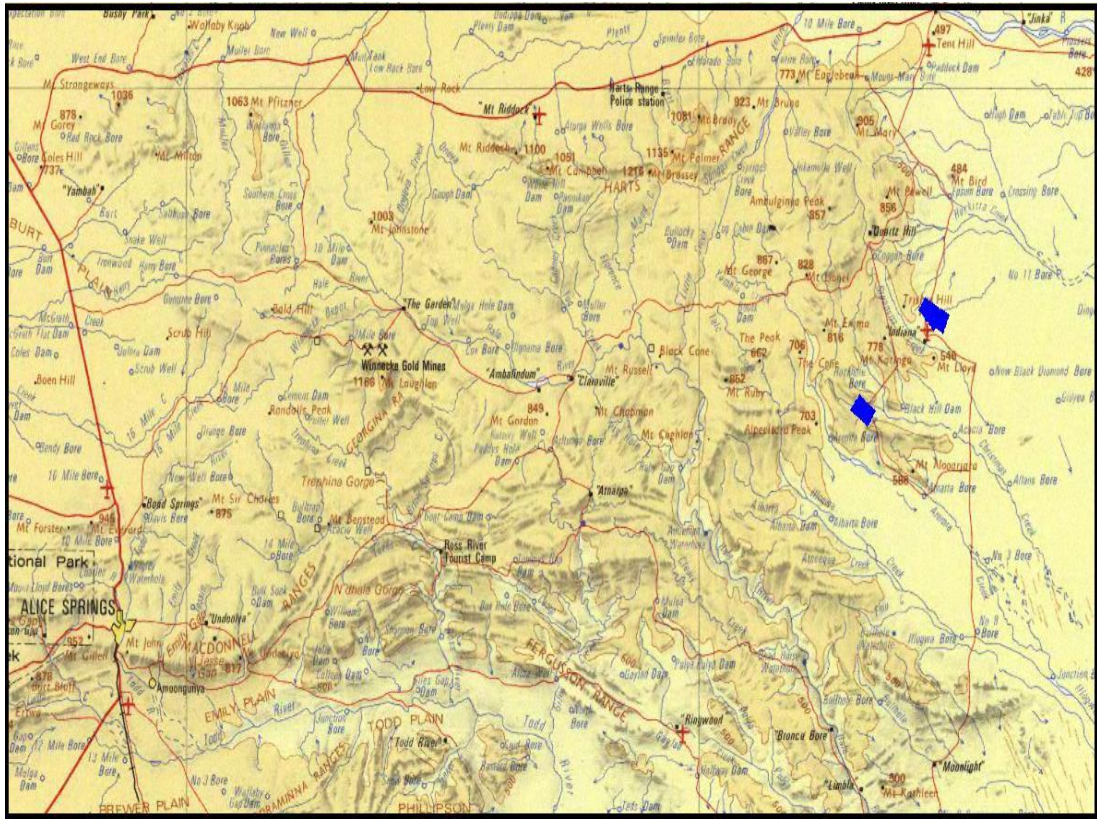


Figure 1. Location Diagram

Survey and Gravity Base Stations

Three base stations were established in the survey areas. They were placed in convenient locations throughout the project to provide good UHF radio coverage for the RTK system. The bases were designated as 2010.5301, 2010.5302 and 2010.5303. The actual bases were marked with a short star picket driven flush with the natural surface. The bases are witnessed by a long star picket within 0.3m of the ground mark standing about 1m tall. Aluminum tags are attached with the inscription "Haines Surveys" and "Gravity Base 2010.0601" etc.

Sub-bases were located within 5 minutes drive of the main bases to provide a backup base station to the main base in case loop ties to the main base were poor. They are not marked in the field.

Horizontal and vertical control for base 2010.5301 has been established using the AUSPOS online GPS processing service provided by Geoscience Australia. This method provides control within the GDA94 Datum to within +/- 5 cm. It largely replaces the need for finding local survey marks or allows accurate control to be established when local marks are not available.

A total of 23.6 hours (at 15 second intervals) of observations were logged over 3 days. The following outlines the cartesian coordinate precision attained per day.

1 Sigma	sX(m)	sY(m)	sZ(m)	yyyy/mm/dd
5301	0.009	0.011	0.008	2010/10/25
5301	0.006	0.009	0.006	2010/10/26
5301	0.004	0.008	0.006	2010/10/27

Since GDA94 and WGS84 (Global Positioning System Datum) are virtually equivalent the GDA94 values can be directly input into the GPS processing software for all calculations.

Vertical control has been converted to an Australian Height Datum (AHD) height using the GDA94 height determined from AUSPOS and the AUSGEOID98 gravimetric geoid.

Horizontal and verticle control for all the other bases has been established from survey base 2010.5301 or sub-sequent survey marks using the Static GPS technique. The Australian Height Datum (AHD) height for the marks has been held fixed and the GDA94 height has been determined using the AUSGEOID98 gravimetric geoid.

Gravity control for 2010.5301 base station was established on the Australian Fundamental Gravity Network (Isogal 1984 / IGSN 71) using classical A-B ties from gravity station 9191.0335 at Alice Springs Airport. The values for 9191.0335 were attained from the Network database. Gravity control for all remaining bases was established using gravity base 2010.5301 and sub-sequent bases.

Coordinates for all bases are listed in the table below.

1053_Oklo SURVEY / GRAVITY CONTROL							
	WGS 84			MGA Zone 53		AHD	AAGD07
Base Station	Latitude	Longitude	Height	Easting	Northing	height	Gravity mGal
2010.5301	-23 24 07.17870	135 20 45.63150	469.966	535353.779	7411936.074	447.139	978723.702
2010.5302	-23 24 46.53820	135 18 59.80710	481.169	532347.569	7410732.595	458.549	978716.161
2010.5303	-23 17 03.34970	135 27 11.98870	473.068	546360.452	7424939.249	449.065	978713.136
9191.0335	-23 45 26.53157	133 55 19.85845	542.570	390165.107	7372219.345	527.770	978639.541

GPS Survey and Gravity Datum

Horizontal Datum: Geocentric Datum of Australia1994 (GDA94)
Map Grid of Australia 1994 (MGA94)
Zone 53

Vertical Datum: Australian Height Datum (AHD)

Gravity Datum: Australian Absolute Gravity Datum 2007 (AAGD07)

GPS Observations and Processing

Carrier phase GPS data has been collected using *Trimble 5000* series Geodetic receivers.

Measurements for detail gravity observations have been made using Real Time Kinematic (RTK) techniques including Post Processed Infill giving horizontal and vertical precisions of at least 5 cm.

RTK processing has been completed using Trimble TSC1 firmware and Trimble Geomatics Office version 1.50 software.

Gravity Observations

Gravity measurements have been made using the *Scintrex CG5 Autograv* instrument numbered 971190397.

Readings of 120 seconds were taken at base stations. Readings of 40 seconds were taken at all other gravity survey points. Base station readings were taken at the beginning of the day and at the end of the day's fieldwork.

All Autograv instruments apply an instrument drift correction to their final gravity readings. Any residual drifts between opening and closing base station readings are corrected by the gravity post processing software. The instruments also apply Earth Tide Corrections to their final gravity reading at each station. The various instrument calibration constants are contained in the daily gravity data files.

Point Numbering and Marking

For the gravity surveys an 8 digit point number is used to identify each gravity station. The first 4 digits indicate the line number. The second 4 digits indicate the station number

For the gravity survey, the lines were West-East on MGA94 and the 8 digits are constructed from the planned coordinates for each gravity station using:

$$\text{Line No} = \text{MGA N} - 7410000 \qquad \text{Station No} = (\text{MGA E} - 530000) / 10$$

For example:

$$\begin{array}{l} \text{Planned gravity station coordinates} \\ \qquad 7412400.000\text{N} \qquad \qquad \qquad 530400.000\text{E} \\ \text{Line No} = 2400 \qquad \qquad \qquad \text{Station No} = 3040 \end{array}$$

That is, Pt No = 24003040

Station numbers have not been expanded in the processed data.

The gravity stations have not been marked in the field.

Gravity Processing

The gravity values for this survey are related to the *Australian Absolute Gravity Datum 2007 (AAGD07)* using the values at known Gravity Stations as provided by *Geoscience Australia*.

Note that the gravity values shown in the accompanying Raw Data gravity files are in units of milligals HOWEVER ALL PROCESSED RESULTS ARE IN μms^{-2} .

The field gravity observations have been processed using standard formulae and constants to produce Anomaly values for each gravity station that correspond to the vector output from Geoscience Australia's Geophysical Archive Data Delivery System (GADDS). The values presented are Ellipsoid Freeair Anomaly and Spherical Cap Bouguer Anomaly calculated using 1980 International Gravity Formulae and Geoidal Freeair Anomaly and Infinite Slab Bouguer Anomaly calculated using 1967 International Gravity Formulae.

The meter reading as recorded in the raw Scintrex data file is corrected for instrument tilts, meter drift and Earth Tide. Post processing corrections are detailed below.

Drift

The residual drift between base station readings is calculated for each station reading proportionately by time. This is the drift value shown in the processing output.

$$\text{Drift} = [(t_1 - t_n) ((b_2 - b_1) / (t_2 - t_1))]$$

- t_n = time of meter reading at each station
- b_1 = base meter reading prior to station reading
- t_1 = time of base reading b_1
- b_2 = base meter reading after station reading
- t_2 = time of base reading b_2

Observed Gravity

This is the observed gravity value in μms^{-2} .

$$\text{Obs_g} = b_g + (r_n - \text{drift}) - b_1$$

- b_g = base stn gravity value (Isogal84)
- r_n = meter reading at each station
- drift = residual drift correction as shown above
- b_1 = base meter reading prior to station reading

The following formulae are a restatement of information supplied with GADDS.

Ellipsoid Freeair Anomaly (1980 International Gravity Formulae)

$$\text{Free Air Anomaly (FAA)} = G_{\text{obs}} - (G_n - \delta g_{\text{atm}}) - \text{FAC}$$

where:

G_{obs} = observed gravity

$$G_n = \gamma_e((1 + k \sin^2 \theta) / (1 - e^2 \sin^2 \theta))$$

where:

G_n = normal or theoretical gravity at the observed station

$\gamma_e = 9\,780\,326.7715 \mu\text{ms}^{-2}$ = normal gravity at the equator;

$k = 0.001\,931\,851\,353$ (GRS80 derived constant)

$e^2 = 0.006\,694\,380\,022\,90$ (GRS80 derived first eccentricity)

θ = Geodetic Latitude

δg_{atm} = atmospheric correction = $8.74 - 0.00099 * h + 0.0000000356 * h^2$

FAC = Free Air correction

$$= -(3.08768 - 0.00440 \sin^2 \theta) * h + 7.2125 * 10^{-7} * h^2$$

Spherical Cap Bouguer Anomaly (1980 International Gravity Formulae)

$$\text{Bouguer_Anomaly (BA)} = \text{FAA} - \text{BC}$$

where:

$$\text{BC} = 2\pi G \rho ((1 + \mu) * h - \lambda R)$$

where:

π is pi;

G is the gravitational constant; = $6.67428 \times 10^{-11} \text{ m}^3 \text{kg}^{-1} \text{s}^{-2}$

ρ is density in t/m^3 typically 2.67 t/m^3 ;

h is the ellipsoid height in metres of the station.;

$R = (R_o + h)$ the radius of the earth at the station and

R_o is the mean radius of the earth = $6,371.008\,771\,4 \text{ km}$

$$\mu = ((1/3) * \eta^2 - \eta)$$

where

$$\eta = h/R$$

$$\lambda = (1/3) \{ (d + f\delta + \delta^2) [(f - \delta)^2 + k]^{1/2} + p + m * \ln(n / (f - \delta + [(f - \delta)^2 + k]^{1/2})) \}$$

where:

$$d = 3 * \cos^2 \alpha - 2;$$

$$f = \cos \alpha$$

$$k = \sin^2 \alpha;$$

$$p = -6 \cdot \cos^2 \alpha \sin(\alpha/2) + 4 \cdot \sin^3(\alpha/2);$$

$$\delta = R_o/R;$$

$$m = -3 \cdot \sin^2 \alpha \cos \alpha = -3 \cdot k \cdot f$$

$$n = 2 \cdot [\sin(\alpha/2) - \sin^2(\alpha/2)]; \text{ and}$$

$$\alpha = S/R_o, \text{ with } S = \text{Bullard B Surface radius} = 166.735 \text{ km.}$$

Geoidal Freeair Anomaly (1967 International Gravity Formulae)

$$\text{Free Air Anomaly (FAA)} = \text{Obsgrav} - G_n + \text{FAC}$$

where:

$$G_n = 9780318.456 \cdot (1 + 0.005278895 \sin^2 \ddot{o} + 0.000023462 \sin^4 \ddot{o})$$

$$\text{FAC} = (3.08768 - 0.00440 \sin^2 \ddot{o}) \cdot H_m - 0.000001442 \cdot H_m^2$$

where:

\ddot{o} = latitude

H_m = **height of gravity meter** above geoid

Infinite Slab Bouguer Anomaly (1967 International Gravity Formulae)

$$\text{Infinite Slab Bouguer Anomaly} = \text{Geoidal FreeAir_Anomaly} - \text{Geoidal Bouguer Correction}$$

where:

$$\text{Geoidal Bouguer Correction} = 0.4191 \cdot H \cdot \text{density}$$

Results Formats

Results of the gravity processing (with Bouguer corrections at density 2.67 g/cc) are included in the Appendix of this report. They are not printed with the hard copy version.

The results are also supplied in digital form on compact disk with the following files being supplied.

Basil.CSV, Black Adder.CSV

CSV Format

This is a Comma Separated Variable format file. This format facilitates data import into spreadsheet and database software. Each record (line) contains the following data fields:

"Pt#"	Station identifiers used in data loggers, line and station numbers combined
"Line"	Station line number
"Stn"	Station number
"Date"	Date of observation
"Day"	GPS day number
"Time"	Time of observation
"GDA94_Lat"	WGS84/GDA94 Latitude used in GPS observation
"GDA94_Long"	WGS84/GDA94 Longitude used in GPS observation
"GDA94_Ht"	Height above the ellipsoid defined by the WGS84 Datum
"MGA94(ZONE53)E"	Easting value for observation on the MGA94/GDA94 Datum
"MGA94(ZONE53)N"	Northing value for observation on the MGA94/GDA94 Datum
"AHD_Ht"	Height of observation in the Australian Height Datum
"Meter_Ser_No"	Gravity meter serial number
"Meter_Rdg"	Gravity meter observation value in mGals
"Meter_Error"	Measurement of the quality of the gravity observation (a function of the SD of the observation set used and the duration of the set)
"ETC"	Earth Tide Correction applied to the gravity observation
"Drift"	The component of the meter drift between opening and closing gravity base observations applied to the observation
"Corr_Meter"	The meter observation with the drift applied
"dg"	The difference in gravity between the base and the observation
"Obs_g"	Observed gravity of the station
"Anom"	Difference between observed and theoretical gravity
"Freeair"	Free air correction (see above)
"Bouguer(2.67)"	Bouguer correction using a density of 2.67g/cc (see above)
"Bouguer_Anom"	Bouguer anomaly (see above)

Field gravity observation files with the extension .DAT and .DC are also supplied in a subdirectory named Raw Data.

*.DAT

These are the raw data files from the *Scintrex CG5* gravity meter. There is a separate file for each day's data. The files are identified by the Julian day number (001 = Jan 1st) with the prefix G. eg. G305 = day 305 (1st November).

*.DC

These are the GPS Real Time Kinematic Data Collector files. They are ASCII format files containing the GPS vectors from the base station. The data is structured in a Trimble format (DC file Version 7).

Bouguer – Elevation Plots

Line profile bitmaps are located on the Compact Disc in the processed files folder accompanying this report.

Production Log

1053_Oklo 2010 Production log				
Date	Day#	Obs	Repeats	Comments
25/10/2010	298	91	0	establish 5301
26/10/2010	299	95	3	light rain, establish 5302
27/10/2010	300	92	3	hills creeks
28/10/2010	301	39	3	finish Basil, hills,creeks
29/10/2010	302	43	3	infill Basil, hills creeks,rain
30/10/2010	303	77	3	infill Basil, hills creeks,rain
31/10/2010	304	113	6	infill Basil, hills creeks
1/11/2010	305	57	2	finish infill, moved to Black Adder, establish 5303
2/11/2010	306	85	0	rocky outcrops
3/11/2010	307	106	4	
4/11/2010	308	106	3	
5/11/2010	309	54	3	finish Black Adder
6/11/2010	310	101	3	infill Basil, complete survey
TOTAL		1059	36	

Repeat Observation Results

Basil Area

Pt #	Day	E	N	H	G	Bouguer
18001600	D298	531,597.962	7,411,797.935	461.707	978,714.067	-42.023
18001600	D299	531,598.025	7,411,797.909	461.692	978,714.088	-42.005
		-0.063	+0.026	+0.015	-0.021	-0.018
18002600	D298	532,582.733	7,411,761.391	457.673	978,717.691	-39.213
18002600	D302	532,582.451	7,411,761.330	457.645	978,717.708	-39.202
		+0.282	+0.061	+0.028	-0.017	-0.011
50002775	D298	531,642.983	7,410,734.407	460.852	978,712.987	-43.903
50002775	D299	531,642.875	7,410,734.394	460.851	978,712.975	-43.916
		+0.108	+0.013	+0.001	+0.012	+0.013
50002825	D298	531,658.507	7,410,781.678	465.309	978,712.113	-43.872
50002825	D300	531,658.427	7,410,782.169	465.283	978,712.087	-43.903
		+0.080	-0.491	+0.026	+0.026	+0.031

50002850	D298	531,668.945	7,410,806.495	462.167	978,713.187	-43.402
50002850	D300	531,667.549	7,410,806.670	462.190	978,713.178	-43.406
		+1.396	-0.175	-0.023	+0.009	+0.004
50002925	D298	531,690.321	7,410,877.636	460.979	978,713.475	-43.305
50002925	D299	531,690.374	7,410,877.531	460.978	978,713.505	-43.275
		-0.053	+0.105	+0.001	-0.030	-0.030
04002000	D299	531,998.039	7,410,410.826	460.212	978,714.126	-43.082
04002000	D300	531,998.000	7,410,410.799	460.233	978,714.106	-43.098
		+0.039	+0.027	-0.021	+0.020	+0.016
06002000	D299	531,995.890	7,410,595.968	459.414	978,714.696	-42.559
06002000	D300	531,995.861	7,410,596.072	459.409	978,714.722	-42.534
		+0.029	-0.104	+0.005	-0.026	-0.025
06003200	D299	533,192.822	7,410,598.879	454.363	978,719.406	-38.839
06003200	D300	533,193.023	7,410,599.008	454.371	978,719.441	-38.803
		-0.201	-0.129	-0.008	-0.035	-0.036
08002000	D299	532,000.496	7,410,800.093	459.950	978,714.681	-42.347
08002000	D304	532,001.028	7,410,798.717	460.008	978,714.708	-42.310
		-0.532	+1.376	-0.058	-0.027	-0.037
08002400	D299	532,400.706	7,410,800.782	457.846	978,716.376	-41.065
08002400	D301	532,400.623	7,410,800.711	457.818	978,716.402	-41.045
		+0.083	+0.071	+0.028	-0.026	-0.020
12002200	D299	532,190.252	7,411,213.259	458.463	978,716.286	-40.789
12002200	D304	532,190.872	7,411,211.851	458.489	978,716.318	-40.753
		-0.620	+1.408	-0.026	-0.032	-0.036
12003600	D299	533,597.600	7,411,203.301	451.061	978,720.496	-38.039
12003600	D303	533,597.561	7,411,203.434	451.052	978,720.510	-38.027
		+0.039	-0.133	+0.009	-0.014	-0.012
16002600	D299	532,610.453	7,411,600.347	454.327	978,718.261	-39.397
16002600	D304	532,610.920	7,411,598.987	454.364	978,718.290	-39.362
		-0.467	+1.360	-0.037	-0.029	-0.035
04003200	D300	533,206.189	7,410,409.494	454.436	978,719.226	-39.118
04003200	D301	533,206.270	7,410,409.604	454.447	978,719.259	-39.082
		-0.081	-0.110	-0.011	-0.033	-0.036
94003600	D300	533,596.608	7,409,400.003	454.061	978,717.820	-41.197
94003600	D302	533,596.639	7,409,400.184	454.087	978,717.864	-41.148
		-0.031	-0.181	-0.026	-0.044	-0.049
94003800	D300	533,786.630	7,409,393.285	455.091	978,718.199	-40.619
94003800	D302	533,786.584	7,409,393.441	455.101	978,718.190	-40.626
		+0.046	-0.156	-0.010	+0.009	+0.007
98003000	D300	532,984.688	7,409,798.828	458.489	978,716.442	-41.468
98003000	D301	532,984.714	7,409,798.889	458.477	978,716.452	-41.460
		-0.026	-0.061	+0.012	-0.010	-0.008
20003400	D302	533,400.539	7,412,001.170	452.206	978,720.137	-37.699
20003400	D303	533,400.589	7,412,001.177	452.215	978,720.136	-37.698
		-0.050	-0.007	-0.009	+0.001	-0.001

92005200	D302	535,195.228	7,409,199.501	444.763	978,721.117	-39.846
92005200	D310	535,195.410	7,409,198.944	444.761	978,721.112	-39.852
		-0.182	+0.557	+0.002	+0.005	+0.006
96005200	D302	535,213.952	7,409,606.383	443.589	978,722.822	-38.130
96005200	D310	535,215.635	7,409,606.128	443.431	978,722.812	-38.171
		-1.683	+0.255	+0.158	+0.010	+0.041
98005000	D302	535,006.444	7,409,798.355	444.916	978,722.896	-37.681
98005000	D303	535,006.373	7,409,798.325	444.912	978,722.890	-37.688
		+0.071	+0.030	+0.004	+0.006	+0.007
02005800	D303	535,800.042	7,410,199.000	442.453	978,724.657	-36.165
02005800	D304	535,800.525	7,410,197.851	442.484	978,724.682	-36.135
		-0.483	+1.149	-0.031	-0.025	-0.030
04005600	D303	535,597.963	7,410,395.152	443.168	978,724.601	-35.964
04005600	D304	535,597.865	7,410,395.140	443.183	978,724.630	-35.932
		+0.098	+0.012	-0.015	-0.029	-0.032
04005800	D303	535,799.505	7,410,400.961	442.096	978,725.122	-35.650
04005800	D304	535,799.851	7,410,399.748	442.113	978,725.139	-35.631
		-0.346	+1.213	-0.017	-0.017	-0.019
08005200	D303	535,193.199	7,410,797.415	443.362	978,724.493	-35.795
08005200	D310	535,195.143	7,410,796.777	443.357	978,724.502	-35.788
		-1.944	+0.638	+0.005	-0.009	-0.007
62001600	D304	536,197.716	7,411,599.106	443.205	978,726.141	-33.700
62001600	D305	536,197.806	7,411,599.188	443.233	978,726.163	-33.673
		-0.090	-0.082	-0.028	-0.022	-0.027
62009400	D304	536,189.526	7,409,409.049	439.162	978,722.417	-39.522
62009400	D305	536,189.518	7,409,409.008	439.190	978,722.457	-39.476
		+0.008	+0.041	-0.028	-0.040	-0.046

Black Adder Area

Pt #	Day	E	N	H	G	Bouguer
44898000	D306	548,001.359	7,424,489.095	439.406	978,715.359	-37.564
44898000	D307	548,001.203	7,424,489.201	439.412	978,715.386	-37.536
		+0.156	-0.106	-0.006	-0.027	-0.028
53054800	D306	544,787.944	7,425,297.700	450.056	978,713.110	-37.246
53054800	D307	544,787.865	7,425,297.595	450.062	978,713.112	-37.243
		+0.079	+0.105	-0.006	-0.002	-0.003
55095200	D306	545,197.320	7,425,509.829	449.405	978,712.722	-37.636
55095200	D307	545,197.062	7,425,509.585	449.428	978,712.722	-37.631
		+0.258	+0.244	-0.023	+0.000	-0.005
30617000	D307	547,003.930	7,423,062.026	445.239	978,714.627	-37.996
30617000	D308	547,003.935	7,423,062.136	445.243	978,714.658	-37.964
		-0.005	-0.110	-0.004	-0.031	-0.032
40815000	D307	545,000.300	7,424,080.306	452.270	978,713.466	-37.175
40815000	D308	545,000.298	7,424,080.260	452.283	978,713.491	-37.147
		+0.002	+0.046	-0.013	-0.025	-0.028

44897000	D307	547,001.308	7,424,487.927	442.412	978,714.803	-37.532
44897000	D308	547,001.291	7,424,487.815	442.428	978,714.839	-37.493
		+0.017	+0.112	-0.016	-0.036	-0.039
28577200	D308	547,196.404	7,422,855.007	444.656	978,714.810	-38.050
28577200	D309	547,196.115	7,422,855.137	444.681	978,714.803	-38.052
		+0.289	-0.130	-0.025	+0.007	+0.002
32657400	D308	547,406.050	7,423,264.913	444.010	978,714.761	-37.983
32657400	D309	547,406.177	7,423,265.047	443.993	978,714.771	-37.976
		-0.127	-0.134	+0.017	-0.010	-0.007

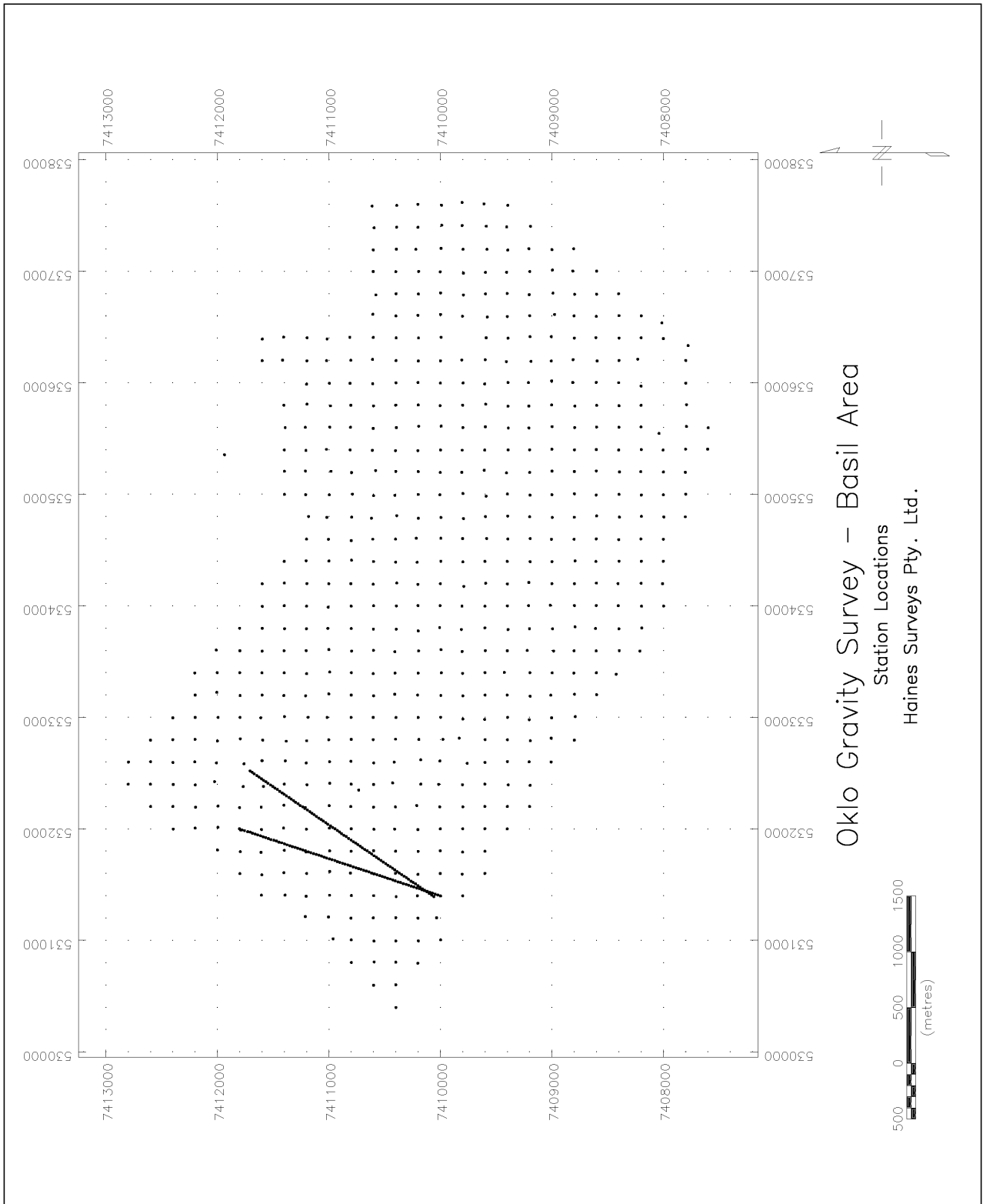
Plots

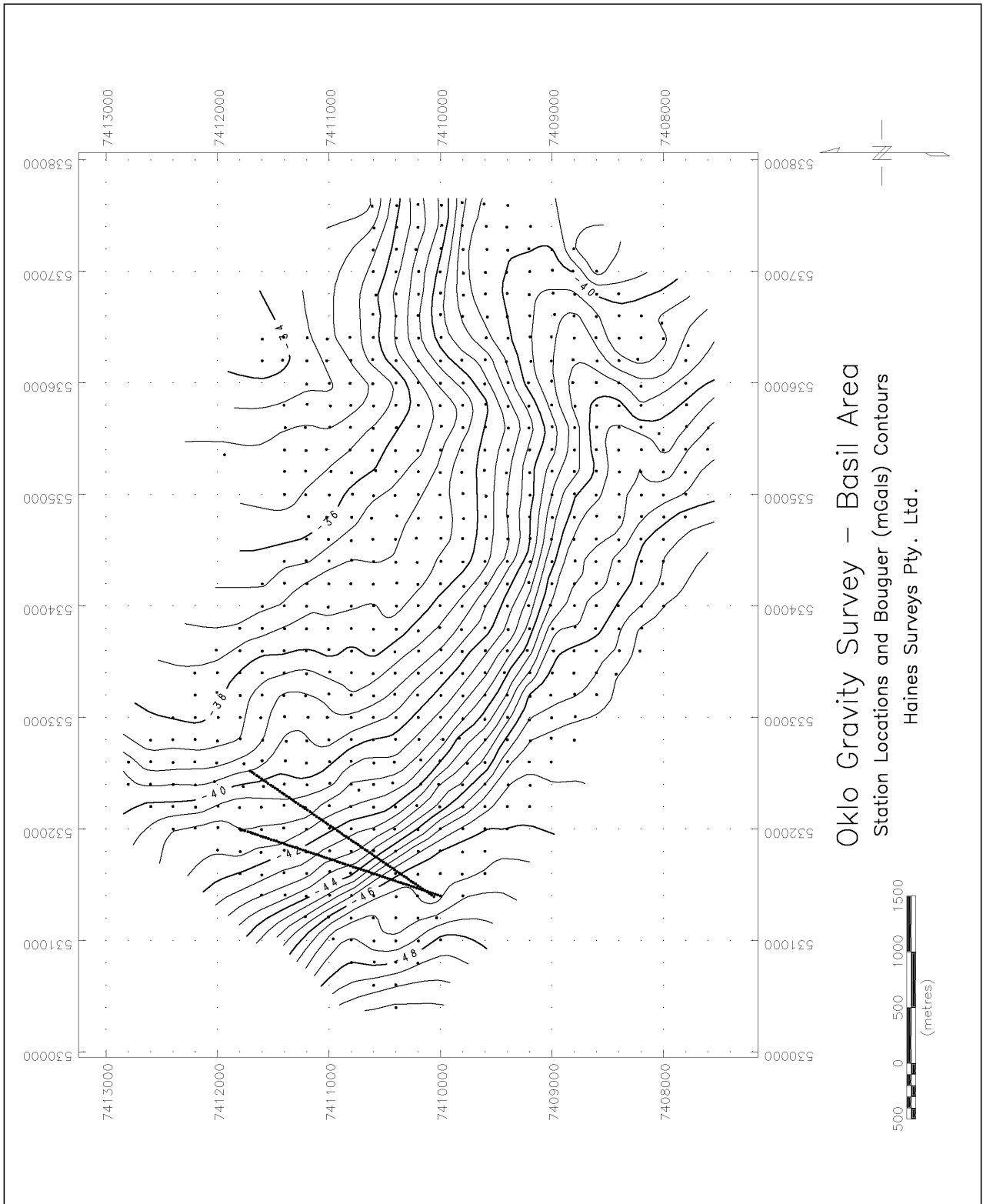
Basil Area

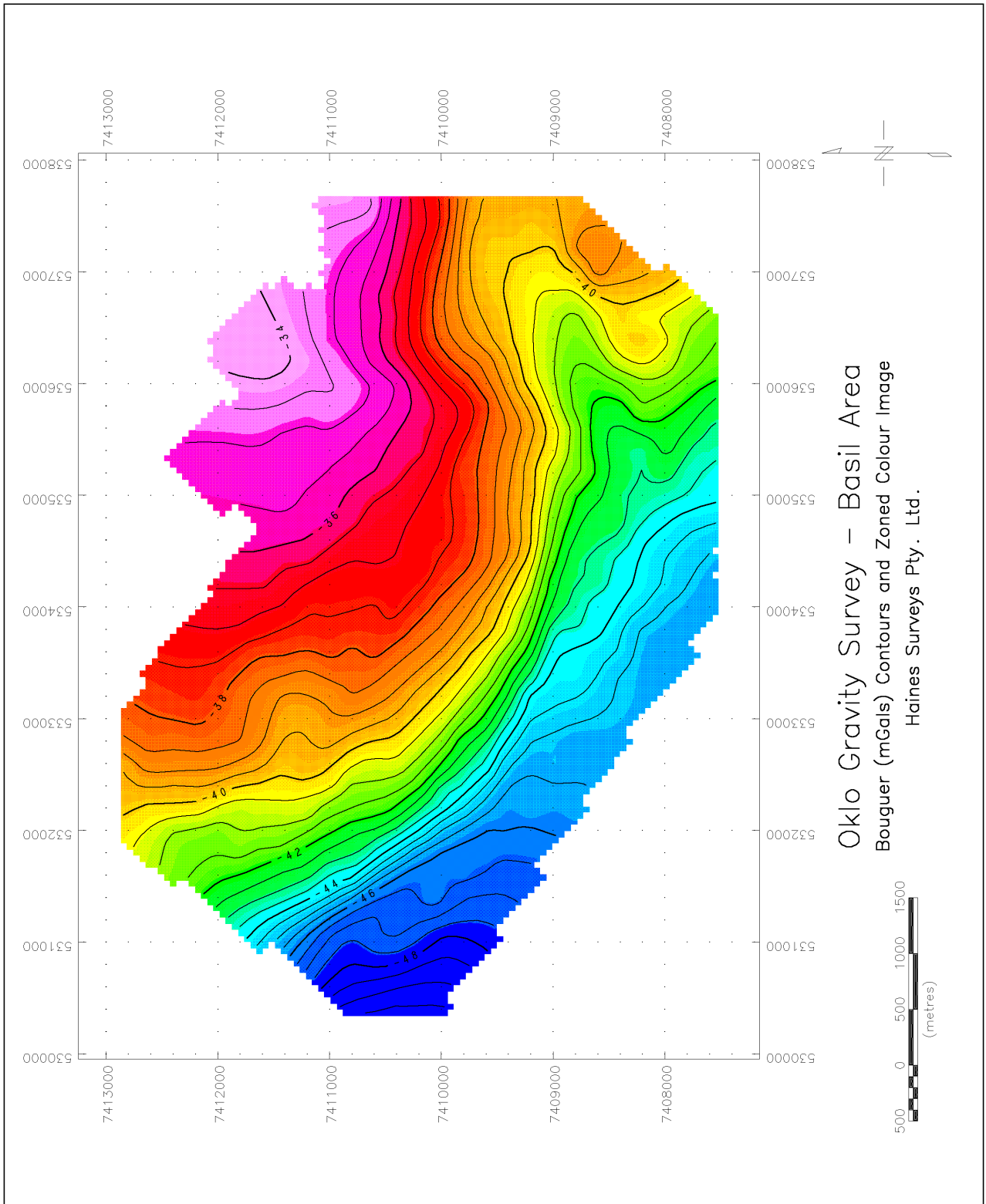
Station Locations	15
Stations and Bouguer Anomaly Contours	16
Bouguer Anomaly Contours and Zoned Image	17

Black Adder Area

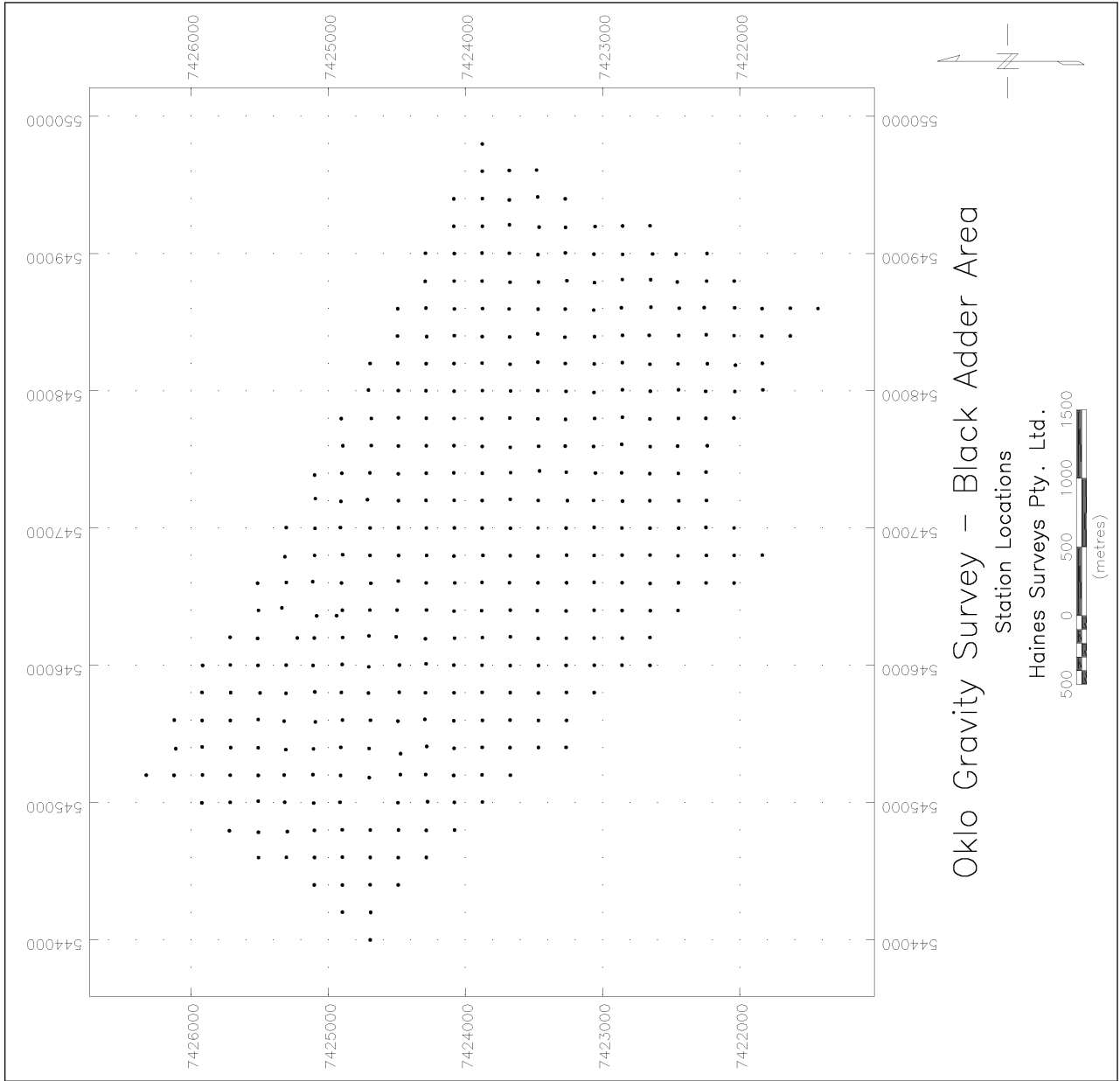
Station Locations	18
Stations and Bouguer Anomaly Contours	19
Bouguer Anomaly Contours and Zoned Image	20

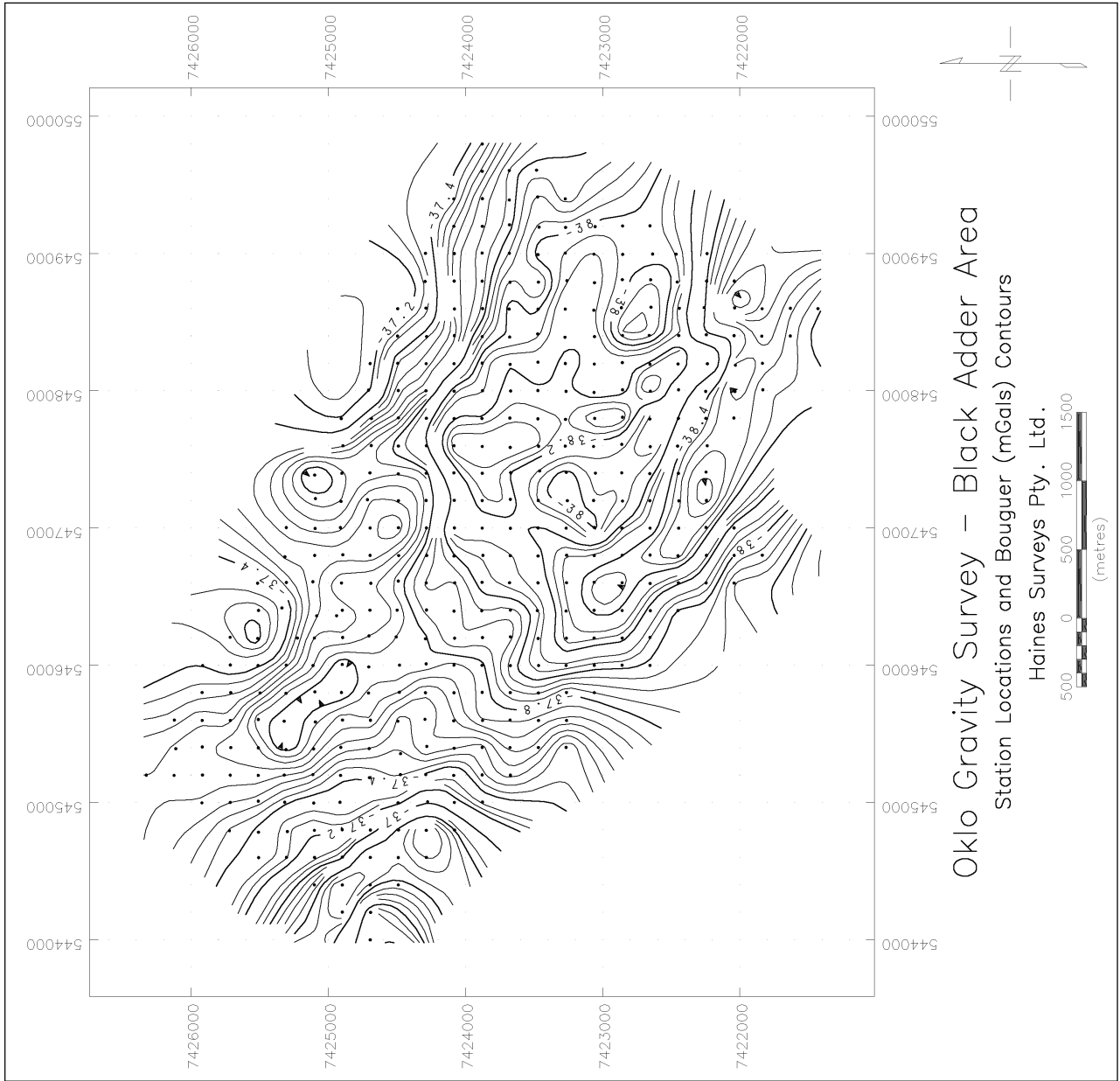


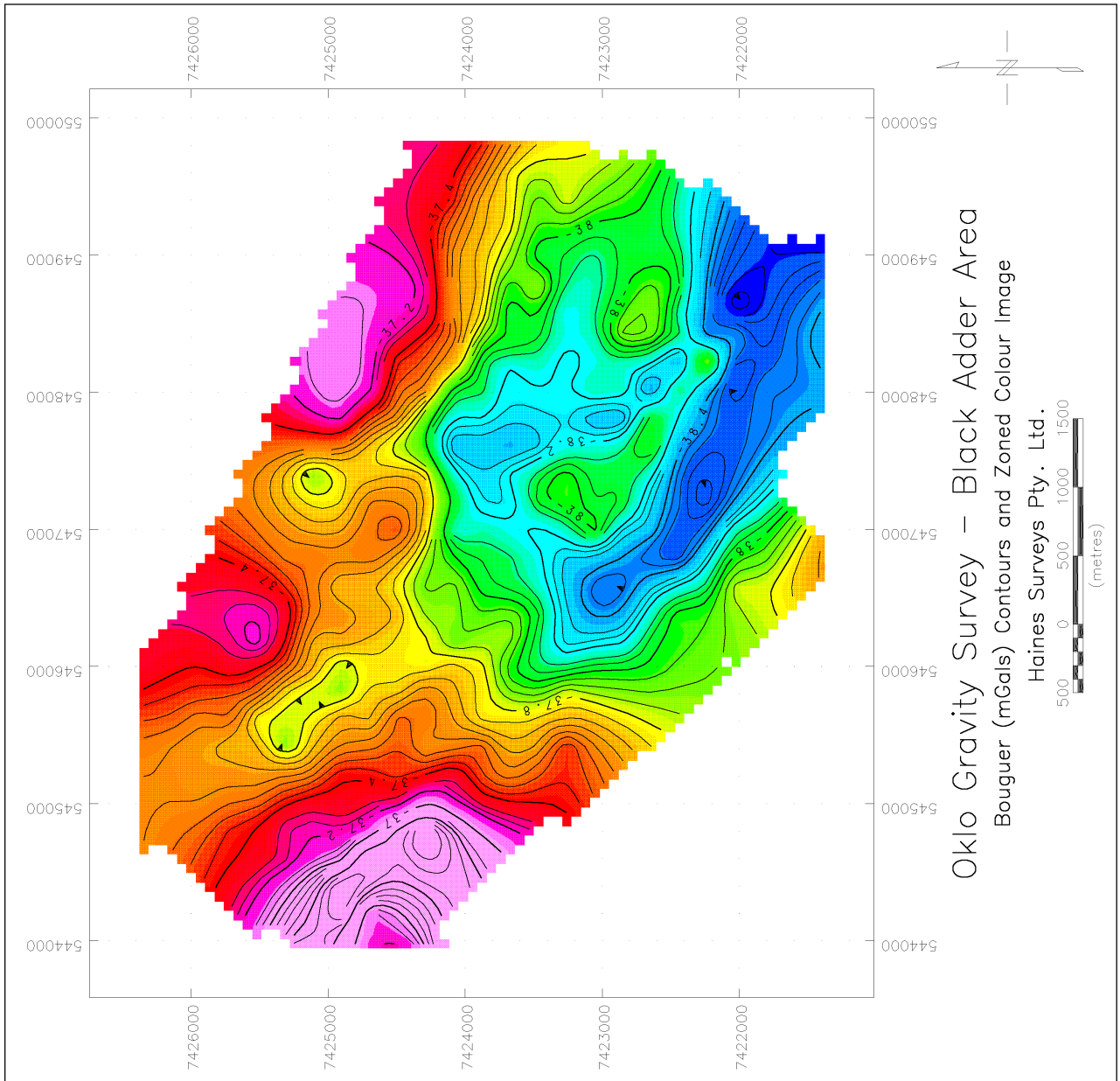




Oklo Gravity Survey – Basil Area
Bouguer (mGals) Contours and Zoned Colour Image
Haines Surveys Pty. Ltd.







GRAVITY PROCESSING RESULTS**Basil Area**

/	COORDS		GRID		drift	corr'd	obs	anom	freeair	bouguer	bouguer	height
/	E	N	x	y	meter	meter	mgal	corr'n	corr'n	anom	(AHD)	
/												
/	(2.67)											
/D298												
532347.6	7410732.6	0	5302	+0.000	3606.954	978716.161	-131.379	141.508	-51.311	-41.183	458.549	
532347.6	7410732.6	0	5302	-0.003	3606.954	978716.161	-131.379	141.508	-51.311	-41.183	458.549	
532347.6	7410732.6	0	5302	-0.118	3606.957	978716.161	-131.379	141.508	-51.311	-41.183	458.549	
532347.6	7410732.6	0	5302	-0.007	3607.075	978716.161	-131.379	141.508	-51.311	-41.183	458.549	
531598.0	7411797.9	1800	1600	-0.105	3604.863	978714.067	-132.841	142.483	-51.665	-42.023	461.707	
531795.0	7411794.9	1800	1800	-0.106	3605.774	978714.978	-131.932	142.176	-51.554	-41.309	460.714	
531989.9	7411790.8	1800	2000	-0.108	3606.423	978715.627	-131.285	141.626	-51.354	-41.013	458.931	
532190.5	7411801.1	1800	2200	-0.109	3606.820	978716.024	-130.881	141.345	-51.252	-40.789	458.021	
532378.5	7411768.7	1800	2400	-0.111	3607.752	978716.956	-129.969	140.911	-51.095	-40.152	456.614	
532582.7	7411761.4	1800	2600	-0.113	3608.487	978717.691	-129.238	141.238	-51.213	-39.213	457.673	
532807.3	7411795.2	1800	2800	-0.114	3609.575	978718.779	-128.129	140.619	-50.989	-38.499	455.669	
531810.2	7411999.7	2000	1800	-0.103	3605.388	978714.592	-132.196	142.355	-51.619	-41.459	461.293	
532013.1	7411995.2	2000	2000	-0.102	3605.973	978715.177	-131.613	141.836	-51.430	-41.208	459.611	
532203.5	7411994.3	2000	2200	-0.101	3606.869	978716.073	-130.718	141.413	-51.277	-40.581	458.242	
532423.4	7412026.0	2000	2400	-0.100	3608.260	978717.464	-129.308	140.938	-51.105	-39.474	456.701	
532006.1	7412199.8	2200	2000	-0.096	3605.865	978715.069	-131.600	142.088	-51.522	-41.033	460.429	
532193.7	7412196.6	2200	2200	-0.097	3606.927	978716.131	-130.539	141.718	-51.388	-40.209	459.230	
531997.8	7412396.7	2400	2000	-0.095	3605.723	978714.927	-131.625	142.193	-51.560	-40.991	460.769	
531397.8	7410000.2	5000	2000	-0.021	3600.260	978709.464	-138.513	144.483	-52.390	-46.420	468.190	
531407.3	7410024.0	5000	2025	-0.022	3600.328	978709.532	-138.431	144.500	-52.396	-46.327	468.243	
531414.4	7410047.0	5000	2050	-0.023	3600.432	978709.636	-138.313	144.604	-52.434	-46.143	468.581	
531422.7	7410070.9	5000	2075	-0.024	3600.438	978709.642	-138.293	144.584	-52.427	-46.136	468.515	
531430.0	7410093.8	5000	2100	-0.024	3600.482	978709.686	-138.235	144.470	-52.385	-46.151	468.146	
531438.6	7410118.1	5000	2125	-0.025	3600.633	978709.837	-138.070	144.132	-52.263	-46.201	467.052	
531446.2	7410143.2	5000	2150	-0.026	3600.653	978709.857	-138.035	143.868	-52.167	-46.334	466.195	
531453.4	7410165.5	5000	2175	-0.026	3600.590	978709.794	-138.084	143.778	-52.135	-46.441	465.904	
531462.6	7410189.0	5000	2200	-0.027	3600.638	978709.842	-138.023	143.720	-52.113	-46.416	465.715	
531469.4	7410212.9	5000	2225	-0.028	3600.693	978709.897	-137.953	143.597	-52.069	-46.425	465.319	
531478.1	7410237.3	5000	2250	-0.028	3600.711	978709.915	-137.921	143.497	-52.033	-46.457	464.993	
531485.0	7410261.4	5000	2275	-0.030	3600.710	978709.914	-137.907	143.427	-52.007	-46.488	464.767	
531494.5	7410284.8	5000	2300	-0.031	3600.719	978709.923	-137.885	143.401	-51.998	-46.481	464.682	
531502.1	7410308.0	5000	2325	-0.032	3600.732	978709.936	-137.858	143.387	-51.993	-46.463	464.638	
531508.2	7410333.3	5000	2350	-0.032	3600.685	978709.889	-137.890	143.490	-52.030	-46.430	464.970	
531518.0	7410356.8	5000	2375	-0.033	3600.711	978709.915	-137.850	143.487	-52.029	-46.392	464.961	
531524.0	7410380.0	5000	2400	-0.034	3600.746	978709.950	-137.801	143.545	-52.050	-46.306	465.150	
531532.8	7410404.7	5000	2425	-0.035	3600.823	978710.027	-137.709	143.527	-52.044	-46.226	465.092	
531541.9	7410427.3	5000	2450	-0.035	3600.963	978710.167	-137.556	143.414	-52.003	-46.144	464.726	
531550.2	7410451.3	5000	2475	-0.036	3601.262	978710.466	-137.243	143.237	-51.938	-45.944	464.151	
531556.4	7410474.5	5000	2500	-0.037	3601.468	978710.672	-137.023	143.155	-51.908	-45.777	463.884	
531564.9	7410497.9	5000	2525	-0.039	3601.449	978710.653	-137.028	143.141	-51.904	-45.790	463.841	
531572.2	7410521.1	5000	2550	-0.039	3601.602	978710.806	-136.861	143.093	-51.886	-45.654	463.686	
531580.1	7410543.5	5000	2575	-0.040	3601.806	978711.010	-136.644	143.041	-51.867	-45.470	463.515	
531588.9	7410568.7	5000	2600	-0.040	3602.083	978711.287	-136.352	142.938	-51.830	-45.244	463.182	
531597.1	7410593.1	5000	2625	-0.041	3602.387	978711.591	-136.033	142.774	-51.771	-45.030	462.651	
531602.2	7410616.8	5000	2650	-0.041	3602.699	978711.903	-135.707	142.574	-51.698	-44.831	462.003	
531613.8	7410640.4	5000	2675	-0.042	3603.084	978712.288	-135.308	142.293	-51.596	-44.611	461.093	
531621.3	7410664.7	5000	2700	-0.043	3603.635	978712.839	-134.743	141.667	-51.369	-44.445	459.064	
531627.8	7410688.4	5000	2725	-0.044	3603.813	978713.017	-134.551	141.722	-51.389	-44.217	459.243	
531637.1	7410711.9	5000	2750	-0.044	3603.840	978713.044	-134.509	141.910	-51.457	-44.057	459.851	
531643.0	7410734.4	5000	2775	-0.045	3603.783	978712.987	-134.553	142.219	-51.569	-43.903	460.852	
531650.1	7410757.6	5000	2800	-0.046	3603.533	978712.737	-134.789	142.830	-51.791	-43.750	462.832	
531658.5	7410781.7	5000	2825	-0.046	3603.909	978712.113	-135.399	143.594	-52.068	-43.872	465.309	
531668.9	7410806.5	5000	2850	-0.047	3603.983	978713.187	-134.310	142.625	-51.716	-43.402	462.167	
531675.1	7410829.4	5000	2875	-0.048	3604.186	978713.390	-134.094	142.461	-51.657	-43.289	461.638	
531683.1	7410855.5	5000	2900	-0.048	3604.233	978713.437	-134.031	142.337	-51.612	-43.306	461.235	
531690.3	7410877.6	5000	2925	-0.049	3604.271	978713.475	-133.980	142.258	-51.583	-43.305	460.979	
531699.2	7410903.0	5000	2950	-0.049	3604.368	978713.572	-133.868	142.230	-51.573	-43.211	460.888	
531705.5	7410924.0	5000	2975	-0.050	3604.420	978713.624	-133.803	142.208	-51.565	-43.160	460.818	
531715.9	7410946.9	5000	3000	-0.051	3604.449	978713.653	-133.761	142.187	-51.558	-43.131	460.748	

531723.7	7410972.2	5000	3025	-0.051	3604.560	978713.764	-133.635	142.161	-51.548	-43.022	460.665
531730.0	7410995.1	5000	3050	-0.052	3604.613	978713.817	-133.568	142.180	-51.555	-42.943	460.727
531738.6	7411020.4	5000	3075	-0.056	3604.709	978713.913	-133.457	142.169	-51.551	-42.839	460.689
531745.9	7411043.5	5000	3100	-0.057	3604.764	978713.968	-133.388	142.158	-51.547	-42.777	460.654
531754.7	7411066.2	5000	3125	-0.057	3604.807	978714.011	-133.332	142.194	-51.560	-42.698	460.771
531763.1	7411088.9	5000	3150	-0.058	3604.870	978714.074	-133.255	142.203	-51.563	-42.616	460.800
531770.0	7411113.2	5000	3175	-0.058	3605.027	978714.231	-133.084	142.158	-51.547	-42.473	460.654
531777.4	7411138.2	5000	3200	-0.059	3605.160	978714.364	-132.936	142.141	-51.541	-42.336	460.599
531786.6	7411162.5	5000	3225	-0.060	3605.219	978714.423	-132.863	142.172	-51.552	-42.243	460.700
531793.8	7411185.2	5000	3250	-0.060	3605.220	978714.424	-132.848	142.170	-51.551	-42.229	460.693
531802.5	7411210.7	5000	3275	-0.061	3605.179	978714.383	-132.874	142.233	-51.574	-42.215	460.896
531809.3	7411233.6	5000	3300	-0.062	3605.208	978714.412	-132.831	142.248	-51.580	-42.163	460.946
531818.3	7411257.1	5000	3325	-0.062	3605.362	978714.566	-132.663	142.176	-51.554	-42.041	460.713
531825.6	7411279.9	5000	3350	-0.063	3605.564	978714.768	-132.448	142.070	-51.515	-41.893	460.370
531834.3	7411303.8	5000	3375	-0.063	3605.623	978714.827	-132.374	141.982	-51.483	-41.876	460.083
531840.5	7411328.2	5000	3400	-0.064	3605.661	978714.865	-132.322	141.967	-51.478	-41.833	460.036
531848.9	7411351.7	5000	3425	-0.065	3605.745	978714.949	-132.224	141.923	-51.462	-41.763	459.893
531856.3	7411375.3	5000	3450	-0.065	3605.931	978715.135	-132.024	141.906	-51.456	-41.574	459.837
531865.2	7411398.5	5000	3475	-0.066	3606.019	978715.223	-131.922	141.894	-51.451	-41.480	459.798
531874.5	7411423.8	5000	3500	-0.076	3606.057	978715.261	-131.869	141.891	-51.450	-41.428	459.789
531879.1	7411448.2	5000	3525	-0.077	3606.134	978715.338	-131.778	141.795	-51.415	-41.398	459.477
531890.9	7411470.6	5000	3550	-0.078	3606.212	978715.416	-131.686	141.716	-51.387	-41.357	459.223
531897.0	7411493.9	5000	3575	-0.079	3606.246	978715.450	-131.638	141.688	-51.377	-41.327	459.130
531903.4	7411519.9	5000	3600	-0.079	3606.239	978715.443	-131.630	141.692	-51.378	-41.316	459.144
531912.5	7411542.8	5000	3625	-0.080	3606.220	978715.424	-131.635	141.736	-51.394	-41.294	459.286
531921.7	7411567.5	5000	3650	-0.081	3606.312	978715.516	-131.529	141.637	-51.358	-41.250	458.966
531928.3	7411590.9	5000	3675	-0.081	3606.274	978715.478	-131.553	141.661	-51.367	-41.259	459.043
531936.7	7411613.5	5000	3700	-0.082	3606.253	978715.457	-131.560	141.688	-51.377	-41.249	459.130
531944.4	7411638.4	5000	3725	-0.083	3606.379	978715.583	-131.419	141.614	-51.350	-41.155	458.893
531952.4	7411660.9	5000	3750	-0.084	3606.441	978715.645	-131.344	141.582	-51.338	-41.100	458.788
531960.4	7411685.3	5000	3775	-0.085	3606.472	978715.676	-131.299	141.593	-51.342	-41.048	458.825
531969.5	7411704.4	5000	3800	-0.087	3606.467	978715.671	-131.292	141.584	-51.339	-41.047	458.796
531973.6	7411728.2	5000	3825	-0.088	3606.467	978715.671	-131.278	141.543	-51.324	-41.059	458.661
531983.6	7411756.3	5000	3850	-0.089	3606.469	978715.673	-131.259	141.600	-51.345	-41.004	458.845
531990.7	7411779.4	5000	3875	-0.090	3606.467	978715.671	-131.248	141.614	-51.350	-40.984	458.891
532000.3	7411801.8	5000	3900	-0.091	3606.462	978715.666	-131.239	141.598	-51.344	-40.986	458.839
/D299											
532347.6	7410732.6	0	5302	+0.000	3607.519	978716.161	-131.379	141.508	-51.311	-41.183	458.549
532347.6	7410732.6	0	5302	-0.002	3607.519	978716.161	-131.379	141.508	-51.311	-41.183	458.549
532347.6	7410732.6	0	5302	-0.102	3607.521	978716.161	-131.379	141.508	-51.311	-41.183	458.549
532347.6	7410732.6	0	5302	-0.005	3607.623	978716.161	-131.379	141.508	-51.311	-41.183	458.549
530795.1	7410202.3	200	800	-0.097	3597.706	978706.346	-141.512	146.003	-52.941	-48.450	473.115
530994.8	7410197.4	200	1000	-0.097	3599.559	978708.199	-139.661	144.468	-52.385	-47.578	468.139
530397.5	7410398.9	400	400	-0.094	3595.531	978704.171	-143.570	147.530	-53.495	-49.535	478.062
530601.2	7410400.6	400	600	-0.093	3596.996	978705.636	-142.104	146.150	-52.995	-48.948	473.591
530804.0	7410400.4	400	800	-0.089	3598.279	978706.919	-140.821	145.610	-52.799	-48.010	471.839
530994.4	7410400.7	400	1000	-0.089	3598.472	978707.112	-140.627	146.697	-53.193	-47.123	475.363
531202.8	7410400.4	400	1200	-0.088	3600.790	978709.430	-138.309	143.884	-52.173	-46.598	466.248
531392.0	7410397.0	400	1400	-0.087	3601.018	978709.658	-138.083	143.476	-52.025	-46.632	464.926
531600.9	7410403.5	400	1600	-0.086	3602.079	978710.719	-137.018	143.026	-51.862	-45.854	463.466
531799.2	7410401.8	400	1800	-0.085	3603.810	978712.450	-135.288	142.511	-51.675	-44.452	461.797
531998.0	7410410.8	400	2000	-0.085	3605.486	978714.126	-133.606	142.021	-51.498	-43.082	460.212
530596.5	7410599.2	600	600	-0.095	3597.858	978706.498	-141.124	144.925	-52.551	-48.749	469.622
530806.3	7410594.2	600	800	-0.056	3598.904	978707.544	-140.081	144.712	-52.473	-47.842	468.930
530993.0	7410596.6	600	1000	-0.058	3599.955	978708.595	-139.028	143.957	-52.199	-47.271	466.483
531201.0	7410602.1	600	1200	-0.059	3600.548	978709.188	-138.431	143.257	-51.946	-47.120	464.215
531400.6	7410597.8	600	1400	-0.059	3601.621	978710.261	-137.361	142.751	-51.762	-46.372	462.577
531596.6	7410599.3	600	1600	-0.061	3602.939	978711.579	-136.042	142.717	-51.750	-45.074	462.466
531803.9	7410599.0	600	1800	-0.062	3604.671	978713.311	-134.309	142.253	-51.582	-43.638	460.963
531995.9	7410596.0	600	2000	-0.063	3606.056	978714.696	-132.926	141.775	-51.408	-42.559	459.414
532194.3	7410599.8	600	2200	-0.063	3607.046	978715.686	-131.933	141.508	-51.311	-41.737	458.548
532397.4	7410599.6	600	2400	-0.064	3608.095	978716.735	-130.884	140.850	-51.073	-41.107	456.417
532591.2	7410597.3	600	2600	-0.065	3608.399	978717.039	-130.581	141.018	-51.134	-40.697	456.959
532799.6	7410602.8	600	2800	-0.066	3609.586	978718.226	-129.391	140.221	-50.845	-40.015	454.378
532999.2	7410602.7	600	3000	-0.068	3610.451	978719.091	-128.526	139.971	-50.754	-39.308	453.569
533192.8	7410598.9	600	3200	-0.068	3610.766	978719.406	-128.213	140.216	-50.843	-38.839	454.363
533391.5	7410603.0	600	3400	-0.069	3611.619	978720.259	-127.357	139.657	-50.640	-38.340	452.549
533600.1	7410600.5	600	3600	-0.070	3612.272	978720.912	-126.705	139.468	-50.572	-37.809	451.937

533790.8	7410601.1	600	3800	-0.070	3612.466	978721.106	-126.511	139.358	-50.532	-37.685	451.580
534000.1	7410598.8	600	4000	-0.071	3612.990	978721.630	-125.988	138.772	-50.319	-37.535	449.682
534193.5	7410602.3	600	4200	-0.072	3613.500	978722.140	-125.475	138.405	-50.186	-37.256	448.494
534396.6	7410600.0	600	4400	-0.072	3614.003	978722.643	-124.973	138.052	-50.058	-36.980	447.349
530801.3	7410798.0	800	800	-0.054	3598.962	978707.602	-139.901	144.150	-52.270	-48.021	467.111
531004.0	7410799.4	800	1000	-0.053	3599.947	978708.587	-138.915	143.328	-51.971	-47.559	464.446
531199.5	7410802.2	800	1200	-0.053	3601.056	978709.696	-137.804	142.730	-51.755	-46.829	462.509
531401.9	7410798.1	800	1400	-0.052	3602.507	978711.147	-136.356	142.700	-51.744	-45.399	462.411
531603.2	7410806.5	800	1600	-0.051	3603.885	978712.525	-134.972	143.060	-51.874	-43.786	463.578
531798.3	7410800.9	800	1800	-0.084	3605.203	978713.843	-133.657	142.300	-51.599	-42.956	461.115
532000.5	7410800.1	800	2000	-0.083	3606.041	978714.681	-132.820	141.941	-51.468	-42.347	459.950
532199.5	7410804.6	800	2200	-0.082	3607.339	978715.979	-131.519	141.264	-51.223	-41.478	457.758
532400.7	7410800.8	800	2400	-0.080	3607.736	978716.376	-131.124	141.291	-51.233	-41.065	457.846
532606.1	7410802.1	800	2600	-0.080	3608.587	978717.227	-130.272	141.042	-51.142	-40.372	457.038
532801.6	7410799.5	800	2800	-0.077	3609.336	978717.976	-129.524	140.851	-51.073	-39.746	456.419
532999.1	7410801.1	800	3000	-0.076	3610.263	978718.903	-128.596	140.433	-50.922	-39.084	455.065
533199.4	7410800.2	800	3200	-0.076	3611.070	978719.710	-127.789	140.062	-50.787	-38.514	453.864
533400.3	7410798.4	800	3400	-0.075	3611.554	978720.194	-127.306	139.741	-50.671	-38.236	452.821
533594.3	7410797.2	800	3600	-0.075	3611.830	978720.470	-127.030	139.420	-50.554	-38.165	451.781
533796.0	7410999.8	800	3800	-0.074	3612.592	978721.232	-126.266	138.970	-50.391	-37.687	450.325
533996.9	7410800.3	800	4000	-0.073	3613.036	978721.676	-125.822	138.637	-50.270	-37.455	449.244
531013.1	7410962.1	1000	1000	-0.046	3600.411	978709.051	-138.355	142.929	-51.827	-47.252	463.152
531209.5	7411003.9	1000	1200	-0.043	3601.918	978710.558	-136.823	142.476	-51.662	-46.009	461.685
531404.4	7410994.4	1000	1400	-0.042	3603.248	978711.888	-135.498	142.722	-51.751	-44.528	462.481
531617.2	7410992.9	1000	1600	-0.042	3604.499	978713.139	-134.248	142.419	-51.642	-43.471	461.499
531802.1	7410993.9	1000	1800	-0.041	3605.571	978714.211	-133.175	142.020	-51.497	-42.652	460.206
532005.9	7410995.4	1000	2000	-0.040	3606.555	978715.195	-132.190	141.749	-51.399	-41.839	459.329
532207.2	7410997.6	1000	2200	-0.039	3607.438	978716.078	-131.305	141.326	-51.245	-41.225	457.957
532408.5	7410992.1	1000	2400	-0.039	3608.477	978717.117	-130.269	141.074	-51.154	-40.349	457.143
532601.3	7410994.7	1000	2600	-0.038	3609.098	978717.738	-129.646	140.824	-51.064	-39.885	456.333
532798.3	7411001.3	1000	2800	-0.037	3609.842	978718.482	-128.898	140.495	-50.944	-39.347	455.265
532998.9	7411015.8	1000	3000	-0.037	3610.264	978718.904	-128.467	140.216	-50.843	-39.094	454.363
533209.5	7411000.8	1000	3200	-0.036	3610.669	978719.309	-128.071	139.854	-50.712	-38.928	453.190
533406.2	7410992.4	1000	3400	-0.035	3611.564	978720.204	-127.180	139.524	-50.592	-38.248	452.120
533607.3	7411001.0	1000	3600	-0.034	3612.250	978720.890	-126.489	139.068	-50.427	-37.848	450.641
533796.8	7411009.5	1000	3800	-0.034	3612.783	978721.423	-125.951	138.677	-50.285	-37.558	449.376
531212.7	7411211.7	1200	1200	-0.023	3602.050	978710.690	-136.567	143.596	-52.069	-45.039	465.315
531395.5	7411203.8	1200	1400	-0.024	3603.474	978712.114	-135.147	143.293	-51.958	-43.813	464.331
531599.8	7411199.3	1200	1600	-0.025	3604.964	978713.604	-133.660	142.474	-51.662	-42.848	461.677
531792.6	7411205.3	1200	1800	-0.025	3605.708	978714.348	-132.912	142.228	-51.573	-42.256	460.882
531996.3	7411201.9	1200	2000	-0.026	3606.792	978715.432	-131.830	141.767	-51.405	-41.468	459.387
532190.3	7411213.3	1200	2200	-0.027	3607.646	978716.286	-130.969	141.482	-51.302	-40.789	458.463
532395.1	7411195.9	1200	2400	-0.028	3608.414	978717.054	-130.211	141.215	-51.205	-40.201	457.598
532590.0	7411202.9	1200	2600	-0.028	3609.209	978717.849	-129.411	140.816	-51.061	-39.656	456.306
532789.3	7411199.2	1200	2800	-0.029	3609.564	978718.204	-129.058	140.468	-50.934	-39.525	455.178
533000.5	7411187.0	1200	3000	-0.030	3609.880	978718.520	-128.749	140.184	-50.831	-39.396	454.259
533192.8	7411209.4	1200	3200	-0.031	3610.383	978719.023	-128.233	139.939	-50.742	-39.036	453.464
533390.8	7411199.8	1200	3400	-0.032	3610.941	978719.581	-127.680	139.703	-50.657	-38.634	452.699
533597.6	7411203.3	1200	3600	-0.033	3611.856	978720.496	-126.763	139.197	-50.474	-38.039	451.061
531405.4	7411393.0	1400	1400	-0.022	3603.938	978712.578	-134.571	143.220	-51.932	-43.283	464.095
531605.8	7411403.6	1400	1600	-0.021	3605.110	978713.750	-133.392	142.425	-51.644	-42.611	461.520
531807.4	7411400.1	1400	1800	-0.021	3606.137	978714.777	-132.367	141.982	-51.483	-41.869	460.083
532006.8	7411406.3	1400	2000	-0.020	3607.058	978715.698	-131.442	141.744	-51.397	-41.096	459.312
532211.5	7411403.6	1400	2200	-0.019	3607.688	978716.328	-130.814	141.475	-51.299	-40.638	458.441
532400.5	7411399.9	1400	2400	-0.019	3608.160	978716.800	-130.344	141.266	-51.224	-40.301	457.765
532609.6	7411391.3	1400	2600	-0.018	3608.938	978717.578	-129.570	140.728	-51.029	-39.871	456.021
532785.7	7411382.5	1400	2800	-0.017	3609.450	978718.090	-129.063	140.380	-50.902	-39.586	454.892
533006.7	7411398.6	1400	3000	-0.016	3609.890	978718.530	-128.614	140.076	-50.792	-39.330	453.908
533195.3	7411404.2	1400	3200	-0.015	3610.295	978718.935	-128.205	139.848	-50.709	-39.066	453.169
531405.2	7411604.8	1600	1400	-0.006	3604.088	978712.728	-134.295	143.325	-51.970	-42.941	464.435
531586.7	7411601.8	1600	1600	-0.008	3605.282	978713.922	-133.103	142.438	-51.649	-42.313	461.562
531788.8	7411608.9	1600	1800	-0.010	3606.314	978714.954	-132.066	141.842	-51.432	-41.657	459.629
531993.7	7411604.3	1600	2000	-0.010	3607.118	978715.758	-131.265	141.486	-51.303	-41.082	458.477
532194.5	7411606.9	1600	2200	-0.011	3607.647	978716.287	-130.734	141.281	-51.229	-40.682	457.812
532380.0	7411587.2	1600	2400	-0.012	3608.322	978716.962	-130.070	140.938	-51.105	-40.237	456.701
532610.5	7411600.3	1600	2600	-0.013	3609.621	978718.261	-128.763	140.205	-50.839	-39.397	454.327
532795.2	7411593.6	1600	2800	-0.014	3610.017	978718.657	-128.371	140.218	-50.844	-38.996	454.368
532995.6	7411611.3	1600	3000	-0.015	3610.538	978719.178	-127.839	139.751	-50.674	-38.762	452.855

531598.0	7411797.9	1800	1600	-0.005	3605.448	978714.088	-132.820	142.478	-51.663	-42.005	461.692
531642.9	7410734.4	5000	2775	-0.099	3604.335	978712.975	-134.565	142.219	-51.569	-43.916	460.851
531690.4	7410877.5	5000	2925	-0.050	3604.865	978713.505	-133.950	142.258	-51.583	-43.275	460.978
/D300											
531004.3	7409998.1	0	1000	-0.027	3599.369	978707.435	-140.544	144.925	-52.550	-48.169	469.621
531202.0	7410034.0	0	1200	-0.026	3598.667	978706.733	-141.224	147.704	-53.558	-47.078	478.627
531397.9	7409998.4	0	1400	-0.025	3601.348	978709.414	-138.564	144.481	-52.389	-46.473	468.181
531599.1	7410001.4	0	1600	-0.024	3602.122	978710.188	-137.788	143.452	-52.016	-46.352	464.847
531802.7	7410001.3	0	1800	-0.023	3602.810	978710.876	-137.100	142.910	-51.820	-46.009	463.092
531999.8	7410001.1	0	2000	-0.023	3604.018	978712.084	-135.892	142.647	-51.724	-44.969	462.239
532196.4	7410006.6	0	2200	-0.020	3604.526	978712.592	-135.380	143.934	-52.191	-43.637	466.409
532608.0	7410004.1	0	2600	-0.092	3606.969	978715.035	-132.938	142.838	-51.794	-41.894	462.858
532801.7	7409977.7	0	2800	-0.091	3608.013	978716.079	-131.909	142.179	-51.555	-41.285	460.723
533000.5	7409998.1	0	3000	-0.089	3609.495	978717.561	-130.415	140.896	-51.089	-40.609	456.565
533196.0	7409995.8	0	3200	-0.089	3610.376	978718.442	-129.535	140.207	-50.840	-40.168	454.332
533398.5	7409992.1	0	3400	-0.088	3610.984	978719.050	-128.929	139.942	-50.744	-39.730	453.475
533606.1	7409994.8	0	3600	-0.087	3611.644	978719.710	-128.267	140.022	-50.773	-39.018	453.733
533804.0	7410006.8	0	3800	-0.086	3612.453	978720.519	-127.451	139.497	-50.582	-38.536	452.032
534001.4	7410003.2	0	4000	-0.085	3613.134	978721.200	-126.772	138.937	-50.379	-38.214	450.218
534197.6	7409999.8	0	4200	-0.084	3613.812	978721.878	-126.095	138.473	-50.211	-37.833	448.714
534399.8	7409996.1	0	4400	-0.083	3614.210	978722.276	-125.699	138.230	-50.123	-37.592	447.927
534605.2	7409995.8	0	4600	-0.082	3614.639	978722.705	-125.270	137.901	-50.004	-37.373	446.861
534791.6	7409995.4	0	4800	-0.082	3614.800	978722.866	-125.109	137.682	-49.924	-37.351	446.150
532347.6	7410732.6	0	5302	+0.000	3608.087	978716.161	-131.379	141.508	-51.311	-41.183	458.549
532347.6	7410732.6	0	5302	-0.008	3608.087	978716.161	-131.379	141.508	-51.311	-41.183	458.549
532347.6	7410732.6	0	5302	-0.126	3608.095	978716.161	-131.379	141.508	-51.311	-41.183	458.549
532347.6	7410732.6	0	5302	-0.009	3608.221	978716.161	-131.379	141.508	-51.311	-41.183	458.549
531199.3	7410201.2	200	1200	-0.012	3601.128	978709.194	-138.664	143.885	-52.173	-46.952	466.250
531399.4	7410206.4	200	1400	-0.016	3601.637	978709.703	-138.151	143.745	-52.123	-46.529	465.798
531591.3	7410201.6	200	1600	-0.017	3602.194	978710.260	-137.597	143.175	-51.916	-46.338	463.949
531797.8	7410200.0	200	1800	-0.018	3603.622	978711.688	-136.170	142.345	-51.615	-45.439	461.262
531993.4	7410202.2	200	2000	-0.018	3604.831	978712.897	-134.959	142.657	-51.728	-44.031	462.270
532208.6	7410212.6	200	2200	-0.097	3606.107	978714.173	-133.677	142.484	-51.665	-42.858	461.712
532400.8	7410176.0	200	2400	-0.095	3606.641	978714.707	-133.164	143.102	-51.889	-41.951	463.714
532618.1	7410175.9	200	2600	-0.099	3606.905	978714.971	-132.900	143.902	-52.180	-41.177	466.307
532801.5	7410193.0	200	2800	-0.101	3608.690	978716.756	-131.105	141.910	-51.457	-40.652	459.851
532998.4	7410200.0	200	3000	-0.102	3609.877	978717.943	-129.913	140.845	-51.071	-40.139	456.401
533199.8	7410204.7	200	3200	-0.102	3610.622	978718.688	-129.165	140.343	-50.889	-39.711	454.772
533396.1	7410199.4	200	3400	-0.103	3611.587	978719.653	-128.203	139.800	-50.692	-39.095	453.014
533595.1	7410196.1	200	3600	-0.104	3612.421	978720.487	-127.371	139.252	-50.494	-38.612	451.239
533774.7	7410198.8	200	3800	-0.105	3612.909	978720.975	-126.881	139.045	-50.418	-38.254	450.566
534002.1	7410200.5	200	4000	-0.106	3613.686	978721.752	-126.102	138.671	-50.283	-37.714	449.356
534191.7	7410201.9	200	4200	-0.107	3614.128	978722.194	-125.659	138.433	-50.196	-37.423	448.584
534389.7	7410208.7	200	4400	-0.108	3614.654	978722.720	-125.129	137.990	-50.036	-37.175	447.148
534605.6	7410216.5	200	4600	-0.109	3614.599	978722.665	-125.179	137.865	-49.990	-37.305	446.743
534785.0	7410197.5	200	4800	-0.110	3614.727	978722.793	-125.062	137.930	-50.014	-37.146	446.955
534998.1	7410199.0	200	5000	-0.111	3615.164	978723.230	-124.624	137.594	-49.892	-36.922	445.864
531998.0	7410410.8	400	2000	-0.064	3606.040	978714.106	-133.626	142.028	-51.500	-43.098	460.233
533206.2	7410409.5	400	3200	-0.120	3611.160	978719.226	-128.505	140.239	-50.851	-39.118	454.436
533396.8	7410407.2	400	3400	-0.119	3611.964	978720.030	-127.702	139.697	-50.655	-38.660	452.681
533587.9	7410408.7	400	3600	-0.118	3612.611	978720.677	-127.054	139.285	-50.505	-38.274	451.345
533790.1	7410396.1	400	3800	-0.117	3613.582	978721.648	-126.090	138.710	-50.297	-37.677	449.482
533998.9	7410394.3	400	4000	-0.116	3614.013	978722.079	-125.660	138.502	-50.221	-37.380	448.808
534204.3	7410391.5	400	4200	-0.115	3614.107	978722.173	-125.568	138.490	-50.217	-37.295	448.768
534391.1	7410400.8	400	4400	-0.114	3614.510	978722.576	-125.159	138.226	-50.121	-37.054	447.912
534597.4	7410401.9	400	4600	-0.113	3614.825	978722.891	-124.843	137.929	-50.014	-36.928	446.950
531995.9	7410596.1	600	2000	-0.006	3606.656	978714.722	-132.900	141.774	-51.408	-42.534	459.409
533193.0	7410599.0	600	3200	-0.122	3611.375	978719.441	-128.178	140.219	-50.844	-38.803	454.371
531658.4	7410782.2	5000	2825	-0.009	3604.021	978712.087	-135.425	143.586	-52.065	-43.903	465.283
531667.5	7410806.7	5000	2850	-0.009	3605.112	978713.178	-134.319	142.632	-51.719	-43.406	462.190
531998.8	7409401.5	9400	2000	-0.041	3602.058	978710.124	-138.208	144.722	-52.477	-45.963	468.964
532199.9	7409399.5	9400	2200	-0.042	3602.693	978710.759	-137.574	144.003	-52.216	-45.787	466.633
532394.4	7409391.3	9400	2400	-0.043	3603.440	978711.506	-136.832	143.279	-51.954	-45.506	464.287
532602.9	7409398.7	9400	2600	-0.045	3604.353	978712.419	-135.914	142.896	-51.815	-44.833	463.045
532798.1	7409398.8	9400	2800	-0.046	3605.462	978713.528	-134.805	142.301	-51.599	-44.103	461.117
532999.8	7409398.2	9400	3000	-0.047	3606.642	978714.708	-133.625	141.714	-51.386	-43.297	459.215
533199.2	7409401.2	9400	3200	-0.047	3607.709	978715.775	-132.556	141.260	-51.222	-42.517	457.746
533402.0	7409427.2	9400	3400	-0.060	3607.955	978716.021	-132.294	141.971	-51.479	-41.802	460.050

533596.6	7409400.0	9400	3600	-0.049	3609.754	978717.820	-130.511	140.123	-50.809	-41.197	454.061
533786.6	7409393.3	9400	3800	-0.050	3610.133	978718.199	-130.136	140.441	-50.925	-40.619	455.091
533999.3	7409398.9	9400	4000	-0.051	3611.300	978719.366	-128.965	139.140	-50.453	-40.278	450.874
534196.1	7409399.1	9400	4200	-0.052	3611.906	978719.972	-128.359	138.822	-50.337	-39.874	449.844
534397.9	7409400.4	9400	4400	-0.052	3612.828	978720.894	-127.436	138.519	-50.227	-39.144	448.861
531600.0	7409601.2	9600	1600	-0.040	3601.290	978709.356	-138.858	144.891	-52.538	-46.505	469.511
531798.3	7409601.2	9600	1800	-0.039	3601.406	978709.472	-138.742	145.142	-52.629	-46.229	470.323
532000.6	7409601.2	9600	2000	-0.038	3602.410	978710.476	-137.737	143.884	-52.173	-46.026	466.248
532200.1	7409601.5	9600	2200	-0.037	3603.275	978711.341	-136.872	143.636	-52.083	-45.319	465.444
532400.4	7409601.6	9600	2400	-0.037	3604.440	978712.506	-135.707	143.016	-51.858	-44.549	463.434
532595.9	7409599.9	9600	2600	-0.036	3605.805	978713.871	-134.342	142.407	-51.637	-43.573	461.462
532800.2	7409599.1	9600	2800	-0.035	3606.765	978714.831	-133.383	141.909	-51.457	-42.930	459.847
532981.1	7409602.7	9600	3000	-0.034	3607.136	978715.202	-133.009	142.475	-51.662	-42.196	461.682
533199.5	7409599.6	9600	3200	-0.059	3608.759	978716.825	-131.388	140.884	-51.085	-41.589	456.526
533401.1	7409599.5	9600	3400	-0.058	3609.936	978718.002	-130.211	140.171	-50.827	-40.866	454.217
533597.6	7409597.4	9600	3600	-0.057	3610.496	978718.562	-129.652	140.078	-50.793	-40.366	453.916
533802.3	7409601.3	9600	3800	-0.056	3611.113	978719.179	-129.032	140.036	-50.778	-39.773	453.779
533996.1	7409601.1	9600	4000	-0.055	3611.201	978719.267	-128.944	140.314	-50.878	-39.508	454.679
534202.6	7409594.7	9600	4200	-0.054	3610.861	978718.927	-129.287	141.912	-51.458	-38.833	459.859
534398.2	7409600.8	9600	4400	-0.053	3613.738	978721.804	-126.406	138.128	-50.086	-38.364	447.595
531398.8	7409799.5	9800	1400	-0.029	3600.802	978708.868	-139.228	144.803	-52.506	-46.932	469.225
531593.6	7409804.8	9800	1600	-0.029	3601.933	978709.999	-138.094	143.949	-52.196	-46.342	466.457
531791.2	7409801.0	9800	1800	-0.030	3602.338	978710.404	-137.691	143.359	-51.983	-46.314	464.547
532000.2	7409799.6	9800	2000	-0.031	3602.702	978710.768	-137.327	143.960	-52.201	-45.568	466.494
532197.0	7409798.5	9800	2200	-0.032	3603.609	978711.675	-136.421	144.156	-52.272	-44.536	467.129
532395.1	7409802.6	9800	2400	-0.033	3604.715	978712.781	-135.312	143.950	-52.197	-43.559	466.463
532812.6	7409831.6	9800	2800	-0.071	3606.230	978714.296	-133.779	143.751	-52.125	-42.153	465.817
532984.7	7409798.8	9800	3000	-0.072	3608.376	978716.442	-131.653	141.490	-51.305	-41.468	458.489
533191.8	7409799.2	9800	3200	-0.073	3609.844	978717.910	-130.184	140.283	-50.867	-40.768	454.578
533393.9	7409800.3	9800	3400	-0.074	3610.662	978718.728	-129.365	139.841	-50.707	-40.231	453.147
533590.0	7409805.1	9800	3600	-0.075	3611.054	978719.120	-128.970	139.883	-50.722	-39.809	453.282
533787.3	7409811.4	9800	3800	-0.076	3610.723	978718.789	-129.297	141.425	-51.281	-39.154	458.278
534174.1	7409789.9	9800	4200	-0.078	3613.019	978721.085	-127.013	139.179	-50.467	-38.302	451.000
534393.7	7409798.8	9800	4400	-0.079	3614.138	978722.204	-125.889	138.153	-50.095	-37.830	447.677
534603.2	7409801.1	9800	4600	-0.080	3614.401	978722.467	-125.624	137.953	-50.022	-37.693	447.029
/D301											
532398.9	7410016.0	0	2400	-0.032	3603.195	978710.705	-137.261	147.878	-53.621	-43.004	479.191
532347.6	7410732.6	0	5302	+0.000	3608.641	978716.161	-131.379	141.508	-51.311	-41.183	458.549
532347.6	7410732.6	0	5302	-0.010	3608.641	978716.161	-131.379	141.508	-51.311	-41.183	458.549
532347.6	7410732.6	0	5302	-0.035	3608.651	978716.161	-131.379	141.508	-51.311	-41.183	458.549
532347.6	7410732.6	0	5302	-0.004	3608.686	978716.161	-131.379	141.508	-51.311	-41.183	458.549
532196.3	7410403.8	400	2200	-0.005	3608.120	978715.630	-132.106	141.253	-51.219	-42.072	457.722
532411.1	7410428.8	400	2400	-0.003	3608.397	978715.907	-131.814	142.106	-51.528	-41.236	460.487
532598.1	7410414.5	400	2600	-0.033	3607.125	978714.635	-133.094	145.112	-52.618	-40.600	470.228
532804.0	7410402.2	400	2800	-0.002	3610.053	978717.563	-130.173	141.259	-51.221	-40.135	457.743
532997.5	7410398.2	400	3000	-0.002	3610.941	978718.451	-129.287	140.660	-51.004	-39.631	455.801
533206.3	7410409.6	400	3200	-0.002	3611.749	978719.259	-128.472	140.242	-50.852	-39.082	454.447
532400.6	7410800.7	800	2400	-0.035	3608.892	978716.402	-131.098	141.283	-51.230	-41.045	457.818
533594.4	7408210.3	8200	3600	-0.024	3604.364	978711.874	-137.165	144.349	-52.342	-45.157	467.755
533386.5	7408424.0	8400	3400	-0.026	3599.692	978707.202	-141.710	151.765	-55.031	-44.975	491.787
533597.2	7408396.2	8400	3600	-0.023	3605.608	978713.118	-135.810	143.194	-51.923	-44.539	464.011
533202.5	7408599.5	8600	3200	-0.020	3605.498	978713.008	-135.800	142.852	-51.799	-44.746	462.905
533399.2	7408601.0	8600	3400	-0.020	3605.743	978713.253	-135.553	142.870	-51.805	-44.488	462.963
533595.4	7408603.7	8600	3600	-0.021	3606.735	978714.245	-134.560	141.600	-51.345	-44.305	458.845
533795.8	7408608.4	8600	3800	-0.021	3607.168	978714.678	-134.123	141.659	-51.366	-43.831	459.038
532795.6	7408799.0	8800	2800	-0.019	3604.655	978712.165	-136.524	143.055	-51.872	-45.342	463.560
533006.2	7408790.2	8800	3000	-0.018	3605.477	978712.987	-135.707	142.525	-51.680	-44.862	461.844
533206.7	7408797.0	8800	3200	-0.018	3606.083	978713.593	-135.097	142.204	-51.564	-44.457	460.805
533397.0	7408803.3	8800	3400	-0.017	3606.666	978714.176	-134.510	141.785	-51.412	-44.137	459.447
533596.0	7408801.2	8800	3600	-0.022	3607.282	978714.792	-133.895	140.898	-51.090	-44.087	456.572
533811.0	7408792.8	8800	3800	-0.022	3608.107	978715.617	-133.075	140.560	-50.968	-43.482	455.477
534001.9	7408798.1	8800	4000	-0.022	3608.776	978716.286	-132.402	139.992	-50.762	-43.172	453.636
532599.7	7409007.2	9000	2600	-0.012	3604.584	978712.094	-136.472	143.353	-51.980	-45.099	464.527
532812.9	7409007.0	9000	2800	-0.012	3605.234	978712.744	-135.822	142.320	-51.606	-45.108	461.179
532995.9	7409003.0	9000	3000	-0.011	3605.771	978713.281	-135.287	142.066	-51.514	-44.734	460.358
533198.2	7409010.4	9000	3200	-0.011	3606.607	978714.117	-134.446	141.329	-51.247	-44.364	457.969
533398.4	7408997.4	9000	3400	-0.011	3606.945	978714.455	-134.116	141.177	-51.191	-44.130	457.476
533594.7	7408985.1	9000	3600	-0.010	3607.604	978715.114	-133.464	140.610	-50.986	-43.839	455.639

533793.5	7408993.8	9000	3800	-0.009	3608.458	978715.968	-132.604	140.084	-50.795	-43.316	453.933
534005.2	7409014.9	9000	4000	-0.009	3609.855	978717.365	-131.194	139.159	-50.460	-42.495	450.938
532199.7	7409200.3	9200	2200	-0.013	3603.298	978710.808	-137.644	144.586	-52.428	-45.485	468.523
532389.1	7409194.9	9200	2400	-0.014	3603.580	978711.090	-137.364	143.693	-52.104	-45.775	465.628
532600.2	7409204.6	9200	2600	-0.014	3604.593	978712.103	-136.345	142.845	-51.796	-45.296	462.882
532789.5	7409194.2	9200	2800	-0.014	3605.328	978712.838	-135.616	142.148	-51.544	-45.012	460.623
532978.3	7409202.9	9200	3000	-0.015	3606.140	978713.650	-134.799	141.574	-51.335	-44.560	458.762
533189.2	7409195.4	9200	3200	-0.015	3606.890	978714.400	-134.053	141.072	-51.153	-44.134	457.136
533400.0	7409197.7	9200	3400	-0.015	3608.272	978715.782	-132.670	140.602	-50.983	-43.050	455.613
533599.0	7409221.0	9200	3600	-0.007	3608.949	978716.459	-131.978	141.004	-51.129	-42.103	456.914
533794.7	7409201.4	9200	3800	-0.007	3610.085	978717.595	-130.854	139.888	-50.724	-41.689	453.300
534001.7	7409209.3	9200	4000	-0.008	3610.864	978718.374	-130.070	139.467	-50.572	-41.174	451.936
534209.2	7409207.6	9200	4200	-0.008	3611.659	978719.169	-129.275	139.022	-50.410	-40.663	450.493
532587.0	7409759.3	9800	2600	-0.028	3605.911	978713.421	-134.698	143.679	-52.099	-43.117	465.584
532984.7	7409798.9	9800	3000	-0.006	3608.942	978716.452	-131.643	141.486	-51.303	-41.460	458.477
533996.6	7409806.7	9800	4000	-0.031	3610.729	978718.239	-129.850	143.050	-51.871	-38.670	463.546
/D302											
532347.6	7410732.6	0	5302	+0.000	3609.290	978716.161	-131.379	141.508	-51.311	-41.183	458.549
532347.6	7410732.6	0	5302	+0.001	3609.290	978716.161	-131.379	141.508	-51.311	-41.183	458.549
532347.6	7410732.6	0	5302	-0.076	3609.289	978716.161	-131.379	141.508	-51.311	-41.183	458.549
532347.6	7410732.6	0	5302	-0.009	3609.365	978716.161	-131.379	141.508	-51.311	-41.183	458.549
532582.5	7411761.3	1800	2600	-0.073	3610.836	978717.708	-129.221	141.229	-51.210	-39.202	457.645
533223.5	7412005.2	2000	3200	-0.070	3612.358	978719.230	-127.553	140.759	-51.040	-37.834	456.120
533400.5	7412001.2	2000	3400	-0.070	3613.265	978720.137	-126.648	139.551	-50.602	-37.699	452.206
533602.6	7412010.6	2000	3600	-0.069	3613.879	978720.751	-126.028	139.254	-50.494	-37.268	451.243
533997.9	7407998.1	8000	4000	-0.016	3601.184	978708.056	-141.108	150.785	-54.675	-44.998	488.610
534198.4	7408007.5	8000	4200	-0.018	3603.161	978710.033	-139.125	148.399	-53.810	-44.536	480.878
533800.6	7408194.4	8200	3800	-0.026	3605.345	978712.217	-136.831	143.965	-52.202	-45.068	466.511
533996.3	7408196.1	8200	4000	-0.025	3600.709	978707.581	-141.465	152.140	-55.167	-44.492	493.001
534201.6	7408199.6	8200	4200	-0.022	3605.605	978712.477	-136.567	145.018	-52.584	-44.133	469.921
534399.0	7408198.1	8200	4400	-0.021	3608.002	978714.874	-134.171	141.309	-51.239	-44.101	457.903
533793.6	7408399.2	8400	3800	-0.027	3605.167	978712.039	-136.887	145.022	-52.585	-44.451	469.934
534000.5	7408404.8	8400	4000	-0.028	3606.567	978713.439	-135.483	143.451	-52.016	-44.049	464.843
534199.1	7408407.2	8400	4200	-0.031	3608.323	978715.195	-133.726	141.118	-51.170	-43.778	457.283
534400.2	7408397.6	8400	4400	-0.031	3609.028	978715.900	-133.026	140.045	-50.781	-43.762	453.807
534593.4	7408400.3	8400	4600	-0.032	3609.114	978715.986	-132.938	140.955	-51.111	-43.094	456.757
534002.3	7408602.4	8600	4000	-0.034	3608.564	978715.436	-133.369	140.413	-50.914	-43.870	454.999
534203.5	7408601.0	8600	4200	-0.034	3609.774	978716.646	-132.159	139.692	-50.653	-43.120	452.663
534397.1	7408605.4	8600	4400	-0.033	3610.047	978716.919	-131.883	139.269	-50.499	-43.114	451.292
534599.8	7408603.0	8600	4600	-0.032	3610.510	978717.382	-131.422	138.845	-50.346	-42.922	449.920
534197.8	7408797.9	8800	4200	-0.035	3609.979	978716.851	-131.837	139.344	-50.527	-43.020	451.536
534402.7	7408792.7	8800	4400	-0.035	3610.500	978717.372	-131.319	138.688	-50.289	-42.920	449.409
534596.8	7408800.9	8800	4600	-0.036	3611.027	978717.899	-130.787	138.389	-50.180	-42.578	448.441
534794.0	7408799.4	8800	4800	-0.037	3611.859	978718.731	-129.955	137.743	-49.946	-42.158	446.349
534198.9	7409000.5	9000	4200	-0.040	3610.621	978717.493	-131.075	139.240	-50.489	-42.323	451.200
534396.3	7409000.1	9000	4400	-0.039	3611.415	978718.287	-130.281	138.769	-50.318	-41.830	449.672
534596.0	7409004.5	9000	4600	-0.039	3612.008	978718.880	-129.685	138.343	-50.164	-41.506	448.291
534792.2	7408996.4	9000	4800	-0.038	3612.524	978719.396	-129.173	137.834	-49.979	-41.318	446.644
534995.4	7409000.3	9000	5000	-0.038	3613.045	978719.917	-128.650	137.475	-49.849	-41.024	445.480
534395.7	7409195.7	9200	4400	-0.040	3612.799	978719.671	-128.780	138.742	-50.309	-40.347	449.586
534602.5	7409195.2	9200	4600	-0.041	3613.447	978720.319	-128.132	138.340	-50.163	-39.955	448.281
534798.2	7409199.9	9200	4800	-0.042	3613.630	978720.502	-127.946	138.030	-50.050	-39.966	447.279
534991.9	7409196.1	9200	5000	-0.042	3614.140	978721.012	-127.438	137.510	-49.862	-39.790	445.594
535195.2	7409199.5	9200	5200	-0.043	3614.245	978721.117	-127.331	137.254	-49.769	-39.846	444.763
533596.6	7409400.2	9400	3600	-0.010	3610.992	978717.864	-130.467	140.131	-50.812	-41.148	454.087
533786.6	7409393.4	9400	3800	-0.047	3611.318	978718.190	-130.144	140.444	-50.926	-40.626	455.101
534598.5	7409395.5	9400	4600	-0.048	3614.558	978721.430	-126.902	138.127	-50.085	-38.861	447.592
534804.3	7409396.1	9400	4800	-0.049	3614.587	978721.459	-126.872	137.782	-49.960	-39.051	446.475
535002.2	7409398.7	9400	5000	-0.050	3614.881	978721.753	-126.577	137.385	-49.816	-39.008	445.187
535192.0	7409407.4	9400	5200	-0.050	3615.246	978722.118	-126.206	137.037	-49.690	-38.860	444.060
534603.3	7409584.9	9600	4600	-0.054	3615.070	978721.942	-126.278	137.899	-50.003	-38.381	446.855
534800.0	7409595.4	9600	4800	-0.053	3615.457	978722.329	-125.884	137.546	-49.875	-38.213	445.710
534983.0	7409590.7	9600	5000	-0.053	3615.655	978722.527	-125.689	137.213	-49.754	-38.230	444.630
535214.0	7409606.4	9600	5200	-0.052	3615.950	978722.822	-125.384	136.892	-49.637	-38.130	443.589
535396.3	7409602.7	9600	5400	-0.051	3615.991	978722.863	-125.345	136.831	-49.616	-38.129	443.393
534781.7	7409793.1	9800	4800	-0.055	3615.919	978722.791	-125.305	137.502	-49.859	-37.661	445.568
535006.4	7409798.4	9800	5000	-0.057	3616.024	978722.896	-125.196	137.301	-49.786	-37.681	444.916

/D303

534995.2	7410004.6	0	5000	-0.012	3616.709	978722.972	-124.998	137.495	-49.856	-37.359	445.543
535195.6	7410001.2	0	5200	-0.011	3617.155	978723.418	-124.553	137.214	-49.754	-37.094	444.633
532347.6	7410732.6	0	5302	+0.000	3609.904	978716.161	-131.379	141.508	-51.311	-41.183	458.549
532347.6	7410732.6	0	5302	+0.006	3609.904	978716.161	-131.379	141.508	-51.311	-41.183	458.549
532347.6	7410732.6	0	5302	-0.072	3609.898	978716.161	-131.379	141.508	-51.311	-41.183	458.549
532347.6	7410732.6	0	5302	-0.008	3609.970	978716.161	-131.379	141.508	-51.311	-41.183	458.549
535396.5	7409998.9	0	5400	-0.010	3617.400	978723.663	-124.309	137.055	-49.697	-36.951	444.119
535611.2	7409992.6	0	5600	-0.010	3617.948	978724.211	-123.765	136.701	-49.568	-36.632	442.972
535794.4	7410002.4	0	5800	-0.009	3618.033	978724.296	-123.674	136.508	-49.498	-36.664	442.346
535203.2	7410199.1	200	5200	-0.013	3617.450	978723.713	-124.141	137.197	-49.748	-36.692	444.578
535391.6	7410201.9	200	5400	-0.015	3617.942	978724.205	-123.647	136.915	-49.646	-36.378	443.664
535610.0	7410194.8	200	5600	-0.016	3618.082	978724.345	-123.511	136.728	-49.578	-36.361	443.058
535800.0	7410199.0	200	5800	-0.017	3618.394	978724.657	-123.196	136.541	-49.510	-36.165	442.453
534807.9	7410391.1	400	4800	-0.022	3616.999	978723.262	-124.478	137.555	-49.878	-36.801	445.740
534990.5	7410408.1	400	5000	-0.021	3617.236	978723.499	-124.231	137.471	-49.848	-36.607	445.467
535204.9	7410400.7	400	5200	-0.021	3617.591	978723.854	-123.880	137.316	-49.791	-36.355	444.963
535391.3	7410403.1	400	5400	-0.020	3617.934	978724.197	-123.535	137.051	-49.695	-36.179	444.105
535598.0	7410395.2	400	5600	-0.019	3618.338	978724.601	-123.135	136.762	-49.590	-35.964	443.168
535799.5	7410401.0	400	5800	-0.018	3618.859	978725.122	-122.611	136.431	-49.470	-35.650	442.096
534597.2	7410606.7	600	4600	-0.023	3616.652	978722.915	-124.697	137.954	-50.023	-36.766	447.031
534785.5	7410618.6	600	4800	-0.024	3616.970	978723.233	-124.372	137.569	-49.883	-36.686	445.785
534987.2	7410599.7	600	5000	-0.025	3617.477	978723.740	-123.876	137.155	-49.733	-36.454	444.442
535212.7	7410581.2	600	5200	-0.026	3617.960	978724.223	-123.403	137.087	-49.708	-36.025	444.223
535393.9	7410610.5	600	5400	-0.027	3618.192	978724.455	-123.154	137.077	-49.705	-35.782	444.189
534198.2	7410803.5	800	4200	-0.032	3615.803	978722.066	-125.430	138.293	-50.146	-37.282	448.130
534408.7	7410797.5	800	4400	-0.031	3616.313	978722.576	-124.923	137.923	-50.011	-37.012	446.930
534584.2	7410799.8	800	4600	-0.030	3616.624	978722.887	-124.610	137.818	-49.973	-36.766	446.590
534794.2	7410795.6	800	4800	-0.030	3617.324	978723.587	-123.913	137.460	-49.844	-36.296	445.432
535001.1	7410788.6	800	5000	-0.029	3617.592	978723.855	-123.648	137.276	-49.777	-36.149	444.836
535193.2	7410797.4	800	5200	-0.029	3618.230	978724.493	-123.005	136.822	-49.612	-35.795	443.362
533987.4	7411006.4	1000	4000	-0.033	3615.426	978721.689	-125.686	138.494	-50.218	-37.411	448.781
534197.2	7411001.3	1000	4200	-0.033	3615.615	978721.878	-125.500	138.446	-50.201	-37.255	448.625
534401.3	7410998.9	1000	4400	-0.034	3616.268	978722.531	-124.848	138.130	-50.087	-36.805	447.603
534596.3	7411004.5	1000	4600	-0.035	3616.988	978723.251	-124.125	137.795	-49.965	-36.295	446.515
534792.8	7411018.3	1000	4800	-0.035	3617.791	978724.054	-123.313	137.136	-49.726	-35.903	444.382
534994.6	7410996.2	1000	5000	-0.036	3618.041	978724.304	-123.076	136.990	-49.673	-35.759	443.907
533597.6	7411203.4	1200	3600	-0.044	3614.247	978720.510	-126.749	139.195	-50.473	-38.027	451.052
533794.2	7411202.1	1200	3800	-0.043	3614.815	978721.078	-126.181	138.953	-50.385	-37.613	450.269
533996.5	7411199.9	1200	4000	-0.042	3615.212	978721.475	-125.785	138.599	-50.257	-37.443	449.123
534199.4	7411197.3	1200	4200	-0.042	3615.766	978722.029	-125.233	138.387	-50.180	-37.025	448.435
534403.2	7411204.4	1200	4400	-0.038	3616.499	978722.762	-124.495	138.177	-50.104	-36.422	447.755
534597.9	7411200.7	1200	4600	-0.038	3617.096	978723.359	-123.900	137.862	-49.989	-36.027	446.734
533398.8	7411400.9	1400	3400	-0.044	3613.423	978719.686	-127.456	139.656	-50.640	-38.440	452.547
533596.4	7411402.5	1400	3600	-0.045	3614.155	978720.418	-126.722	139.387	-50.542	-37.878	451.675
533794.8	7411397.9	1400	3800	-0.046	3614.697	978720.960	-126.183	139.071	-50.428	-37.540	450.652
534000.3	7411399.9	1400	4000	-0.046	3615.418	978721.681	-125.460	138.712	-50.298	-37.046	449.488
534203.7	7411399.3	1400	4200	-0.047	3615.893	978722.156	-124.985	138.420	-50.192	-36.757	448.543
534398.2	7411400.4	1400	4400	-0.047	3616.441	978722.704	-124.437	138.103	-50.077	-36.410	447.516
533199.8	7411599.6	1600	3200	-0.050	3612.975	978719.238	-127.786	139.836	-50.705	-38.655	453.130
533398.6	7411599.9	1600	3400	-0.050	3613.529	978719.792	-127.231	139.505	-50.585	-38.311	452.058
533593.8	7411599.2	1600	3600	-0.049	3614.118	978720.381	-126.643	139.176	-50.466	-37.933	450.991
533797.9	7411598.1	1600	3800	-0.049	3615.015	978721.278	-125.746	138.772	-50.319	-37.293	449.683
533994.5	7411597.5	1600	4000	-0.048	3615.693	978721.956	-125.068	138.286	-50.143	-36.925	448.108
534196.8	7411598.3	1600	4200	-0.048	3616.317	978722.580	-124.443	138.090	-50.072	-36.425	447.473
532999.2	7411797.1	1800	3000	-0.051	3612.964	978719.227	-127.680	140.042	-50.780	-38.418	453.797
533195.2	7411796.3	1800	3200	-0.052	3613.237	978719.500	-127.407	139.623	-50.628	-38.412	452.440
533399.7	7411799.6	1800	3400	-0.052	3613.898	978720.161	-126.744	139.215	-50.480	-38.009	451.119
533596.1	7411798.5	1800	3600	-0.052	3614.506	978720.769	-126.136	138.853	-50.349	-37.632	449.944
533798.8	7411800.5	1800	3800	-0.053	3615.099	978721.362	-125.542	138.801	-50.330	-37.071	449.775
532590.9	7412008.2	2000	2600	-0.055	3610.403	978716.666	-130.116	143.142	-51.904	-38.878	463.842
532787.1	7412000.7	2000	2800	-0.056	3611.252	978717.515	-129.271	142.571	-51.697	-38.397	461.992
532998.8	7411993.3	2000	3000	-0.057	3613.067	978719.330	-127.460	140.147	-50.818	-38.131	454.138
533400.6	7412001.2	2000	3400	-0.070	3613.873	978720.136	-126.649	139.554	-50.603	-37.698	452.215
532393.0	7412198.2	2200	2400	-0.061	3610.913	978717.176	-129.493	141.240	-51.214	-39.468	457.679
532600.5	7412202.5	2200	2600	-0.060	3611.072	978717.335	-129.331	142.042	-51.505	-38.795	460.278
532802.0	7412200.6	2200	2800	-0.060	3612.070	978718.333	-128.334	141.333	-51.248	-38.249	457.982
532998.4	7412199.6	2200	3000	-0.059	3613.011	978719.274	-127.394	140.407	-50.912	-37.899	454.979
533200.0	7412199.3	2200	3200	-0.058	3613.467	978719.730	-126.938	140.057	-50.785	-37.666	453.848

533397.9	7412202.8	2200	3400	-0.069	3613.642	978719.905	-126.760	139.925	-50.737	-37.573	453.418
532200.4	7412398.9	2400	2200	-0.062	3609.745	978716.008	-130.542	141.860	-51.439	-40.121	459.689
532397.6	7412396.7	2400	2400	-0.062	3610.556	978716.819	-129.732	141.509	-51.312	-39.535	458.553
532595.0	7412398.7	2400	2600	-0.063	3610.588	978716.851	-129.699	142.600	-51.708	-38.806	462.088
532799.9	7412400.4	2400	2800	-0.063	3611.400	978717.663	-128.886	141.997	-51.489	-38.377	460.133
532994.9	7412399.9	2400	3000	-0.068	3612.676	978718.939	-127.610	140.596	-50.981	-37.994	455.593
532199.9	7412598.5	2600	2200	-0.066	3609.400	978715.663	-130.769	142.118	-51.533	-40.183	460.525
532400.0	7412600.8	2600	2400	-0.065	3610.279	978716.542	-129.888	141.891	-51.450	-39.447	459.789
532601.8	7412599.2	2600	2600	-0.065	3610.532	978716.795	-129.636	142.587	-51.703	-38.751	462.045
532795.1	7412599.4	2600	2800	-0.064	3611.182	978717.445	-128.985	142.308	-51.601	-38.279	461.140
532399.7	7412799.9	2800	2400	-0.066	3609.901	978716.164	-130.148	142.039	-51.504	-39.613	460.269
532598.8	7412797.6	2800	2600	-0.067	3610.405	978716.668	-129.645	141.745	-51.397	-39.297	459.315
535006.4	7409798.3	9800	5000	-0.005	3616.627	978722.890	-125.202	137.300	-49.786	-37.688	444.912
535197.0	7409808.5	9800	5200	-0.006	3616.607	978722.870	-125.216	137.087	-49.708	-37.837	444.222
535395.4	7409804.4	9800	5400	-0.007	3616.961	978723.224	-124.864	136.866	-49.628	-37.626	443.507
535598.3	7409798.6	9800	5600	-0.007	3617.615	978723.878	-124.213	136.438	-49.473	-37.248	442.120
/D304											
535353.8	7411936.1	0	5301	+0.000	3618.048	978723.702	-123.119	137.987	-50.035	-35.167	447.139
535353.8	7411936.1	0	5301	-0.001	3618.048	978723.702	-123.119	137.987	-50.035	-35.167	447.139
535353.8	7411936.1	0	5301	-0.064	3618.049	978723.702	-123.119	137.987	-50.035	-35.167	447.139
535353.8	7411936.1	0	5301	-0.008	3618.113	978723.702	-123.119	137.987	-50.035	-35.167	447.139
535800.5	7410197.9	200	5800	-0.015	3619.029	978724.682	-123.171	136.551	-49.514	-36.135	442.484
536001.3	7410200.3	200	6000	-0.014	3619.003	978724.656	-123.196	136.155	-49.370	-36.411	441.203
536195.1	7410197.6	200	6200	-0.014	3618.642	978724.295	-123.558	135.835	-49.254	-36.977	440.166
536401.5	7410196.7	200	6400	-0.014	3618.357	978724.010	-123.843	135.629	-49.180	-37.394	439.498
536604.5	7410201.4	200	6600	-0.013	3618.411	978724.064	-123.786	135.462	-49.119	-37.443	438.957
536795.4	7410197.0	200	6800	-0.013	3618.788	978724.441	-123.411	135.162	-49.011	-37.259	437.986
536997.8	7410195.5	200	7000	-0.012	3619.124	978724.777	-123.076	134.621	-48.814	-37.269	436.231
537196.0	7410220.5	200	7200	-0.058	3619.450	978725.103	-122.735	134.597	-48.806	-36.943	436.154
537393.7	7410201.7	200	7400	-0.058	3619.770	978725.423	-122.426	134.425	-48.743	-36.744	435.595
537599.8	7410201.3	200	7600	-0.059	3619.763	978725.416	-122.433	134.274	-48.688	-36.847	435.106
535597.9	7410395.1	400	5600	-0.062	3618.977	978724.630	-123.106	136.766	-49.592	-35.932	443.183
535799.9	7410399.7	400	5800	-0.008	3619.486	978725.139	-122.594	136.436	-49.472	-35.631	442.113
535999.7	7410398.1	400	6000	-0.008	3619.760	978725.413	-122.321	136.102	-49.351	-35.570	441.031
536198.4	7410398.0	400	6200	-0.009	3619.294	978724.947	-122.787	135.713	-49.210	-36.284	439.771
536401.9	7410397.2	400	6400	-0.009	3619.010	978724.663	-123.071	135.711	-49.209	-36.569	439.763
536598.6	7410399.4	400	6600	-0.009	3619.237	978724.890	-122.842	135.515	-49.138	-36.466	439.127
536798.1	7410397.6	400	6800	-0.010	3619.463	978725.116	-122.617	134.965	-48.939	-36.591	437.347
536995.6	7410399.9	400	7000	-0.011	3619.797	978725.450	-122.282	134.847	-48.896	-36.331	436.963
537197.8	7410394.7	400	7200	-0.060	3620.041	978725.694	-122.040	134.724	-48.852	-36.168	436.566
537395.5	7410393.2	400	7400	-0.059	3620.181	978725.834	-121.901	134.679	-48.835	-36.057	436.419
537589.9	7410391.2	400	7600	-0.059	3620.523	978726.176	-121.560	134.519	-48.777	-35.818	435.902
532001.0	7410798.7	800	2000	-0.028	3609.055	978714.708	-132.793	141.958	-51.475	-42.310	460.008
532190.9	7411211.9	1200	2200	-0.037	3610.665	978716.318	-130.938	141.490	-51.305	-40.753	458.489
532610.9	7411599.0	1600	2600	-0.046	3612.637	978718.290	-128.735	140.217	-50.843	-39.362	454.364
531392.0	7410058.4	6000	2000	-0.017	3603.655	978709.308	-138.634	144.824	-52.514	-46.324	469.292
531406.6	7410079.6	6000	2025	-0.018	3603.655	978709.308	-138.622	144.992	-52.575	-46.205	469.837
531420.2	7410099.1	6000	2050	-0.018	3603.916	978709.569	-138.349	144.651	-52.451	-46.149	468.733
531434.2	7410120.5	6000	2075	-0.018	3604.148	978709.801	-138.104	144.175	-52.279	-46.208	467.191
531448.6	7410141.3	6000	2100	-0.019	3604.199	978709.852	-138.041	143.859	-52.164	-46.346	466.165
531462.0	7410162.6	6000	2125	-0.019	3604.143	978709.796	-138.084	143.766	-52.130	-46.449	465.865
531476.7	7410182.4	6000	2150	-0.019	3604.172	978709.825	-138.043	143.705	-52.108	-46.447	465.667
531491.0	7410202.9	6000	2175	-0.019	3604.180	978709.833	-138.023	143.696	-52.105	-46.432	465.639
531506.5	7410223.2	6000	2200	-0.019	3604.266	978709.919	-137.925	143.479	-52.026	-46.472	464.936
531519.1	7410244.3	6000	2225	-0.020	3604.357	978710.010	-137.822	143.341	-51.976	-46.457	464.487
531530.5	7410264.3	6000	2250	-0.020	3604.382	978710.035	-137.785	143.326	-51.971	-46.429	464.441
531547.1	7410285.9	6000	2275	-0.020	3604.470	978710.123	-137.684	143.235	-51.937	-46.387	464.143
531562.1	7410305.6	6000	2300	-0.020	3604.590	978710.243	-137.552	143.191	-51.922	-46.283	464.003
531575.3	7410326.8	6000	2325	-0.021	3604.669	978710.322	-137.461	143.162	-51.911	-46.210	463.909
531589.7	7410347.7	6000	2350	-0.021	3604.791	978710.444	-137.326	143.140	-51.903	-46.089	463.837
531603.1	7410368.6	6000	2375	-0.021	3604.969	978710.622	-137.136	143.088	-51.884	-45.932	463.667
531616.5	7410387.9	6000	2400	-0.021	3605.112	978710.765	-136.981	143.056	-51.873	-45.798	463.563
531631.9	7410409.3	6000	2425	-0.022	3605.310	978710.963	-136.770	142.990	-51.849	-45.629	463.351
531645.7	7410429.5	6000	2450	-0.023	3605.495	978711.148	-136.573	142.911	-51.820	-45.483	463.095
531660.0	7410450.2	6000	2475	-0.023	3605.743	978711.396	-136.313	142.839	-51.794	-45.268	462.861
531673.2	7410471.1	6000	2500	-0.023	3606.003	978711.656	-136.041	142.774	-51.770	-45.037	462.650
531688.3	7410491.3	6000	2525	-0.023	3606.232	978711.885	-135.800	142.709	-51.747	-44.837	462.441
531702.3	7410513.0	6000	2550	-0.023	3606.443	978712.096	-135.576	142.646	-51.724	-44.654	462.236

531716.6	7410533.1	6000	2575	-0.024	3606.646	978712.299	-135.361	142.654	-51.727	-44.433	462.263
531730.9	7410554.0	6000	2600	-0.024	3606.842	978712.495	-135.152	142.647	-51.725	-44.229	462.240
531745.3	7410574.7	6000	2625	-0.024	3607.090	978712.743	-134.892	142.521	-51.679	-44.050	461.831
531757.9	7410594.3	6000	2650	-0.024	3607.307	978712.960	-134.663	142.387	-51.630	-43.906	461.397
531774.0	7410616.2	6000	2675	-0.025	3607.638	978713.291	-134.319	142.179	-51.555	-43.695	460.721
531787.1	7410636.9	6000	2700	-0.025	3608.010	978713.663	-133.935	141.889	-51.449	-43.496	459.782
531802.7	7410657.0	6000	2725	-0.025	3608.419	978714.072	-133.514	141.554	-51.328	-43.288	458.697
531815.1	7410677.9	6000	2750	-0.025	3608.504	978714.157	-133.416	141.638	-51.359	-43.137	458.970
531828.5	7410699.9	6000	2775	-0.026	3608.800	978714.453	-133.107	141.426	-51.282	-42.963	458.283
531844.6	7410718.4	6000	2800	-0.026	3608.736	978714.389	-133.160	141.640	-51.359	-42.879	458.977
531859.1	7410740.1	6000	2825	-0.026	3608.604	978714.257	-133.279	141.909	-51.457	-42.827	459.849
531871.9	7410759.4	6000	2850	-0.027	3608.531	978714.184	-133.341	142.089	-51.522	-42.774	460.431
531884.5	7410781.2	6000	2875	-0.027	3608.521	978714.174	-133.338	142.123	-51.534	-42.749	460.541
531899.8	7410801.7	6000	2900	-0.027	3608.671	978714.324	-133.176	142.080	-51.519	-42.614	460.403
531914.2	7410823.5	6000	2925	-0.029	3608.824	978714.477	-133.010	142.007	-51.492	-42.495	460.165
531931.7	7410845.0	6000	2950	-0.029	3608.898	978714.551	-132.923	141.995	-51.488	-42.416	460.127
531940.2	7410864.9	6000	2975	-0.030	3608.923	978714.576	-132.886	141.980	-51.483	-42.389	460.078
531955.9	7410885.3	6000	3000	-0.030	3609.012	978714.665	-132.785	141.909	-51.457	-42.333	459.847
531971.8	7410904.7	6000	3025	-0.030	3609.152	978714.805	-132.634	141.820	-51.425	-42.238	459.559
531984.1	7410924.0	6000	3050	-0.031	3609.305	978714.958	-132.469	141.743	-51.397	-42.122	459.311
532000.1	7410946.0	6000	3075	-0.031	3609.496	978715.149	-132.265	141.730	-51.392	-41.927	459.268
532012.1	7410966.9	6000	3100	-0.032	3609.579	978715.232	-132.169	141.711	-51.385	-41.843	459.206
532027.0	7410986.2	6000	3125	-0.032	3609.661	978715.314	-132.076	141.692	-51.378	-41.762	459.143
532040.9	7411010.5	6000	3150	-0.032	3609.710	978715.363	-132.013	141.704	-51.382	-41.691	459.183
532055.3	7411028.7	6000	3175	-0.033	3609.744	978715.397	-131.968	141.712	-51.385	-41.641	459.209
532070.2	7411051.1	6000	3200	-0.033	3609.797	978715.450	-131.901	141.685	-51.376	-41.592	459.122
532082.9	7411068.4	6000	3225	-0.033	3609.882	978715.535	-131.806	141.666	-51.369	-41.509	459.061
532096.0	7411090.2	6000	3250	-0.034	3609.997	978715.650	-131.678	141.642	-51.360	-41.396	458.983
532111.3	7411111.8	6000	3275	-0.034	3610.136	978715.789	-131.526	141.623	-51.353	-41.256	458.922
532126.1	7411132.8	6000	3300	-0.034	3610.350	978716.003	-131.300	141.571	-51.334	-41.063	458.753
532139.9	7411151.8	6000	3325	-0.035	3610.445	978716.098	-131.193	141.586	-51.340	-40.947	458.800
532154.1	7411169.9	6000	3350	-0.035	3610.529	978716.182	-131.099	141.669	-51.370	-40.799	459.071
532169.4	7411193.7	6000	3375	-0.035	3610.622	978716.275	-130.991	141.510	-51.312	-40.794	458.554
532183.0	7411215.3	6000	3400	-0.036	3610.634	978716.287	-130.967	141.512	-51.313	-40.767	458.561
532196.9	7411235.0	6000	3425	-0.037	3610.711	978716.364	-130.878	141.498	-51.308	-40.687	458.517
532209.0	7411257.3	6000	3450	-0.038	3610.761	978716.414	-130.815	141.486	-51.304	-40.632	458.478
532224.7	7411276.0	6000	3475	-0.038	3610.780	978716.433	-130.785	141.482	-51.302	-40.604	458.465
532238.0	7411299.0	6000	3500	-0.038	3610.728	978716.381	-130.823	141.517	-51.315	-40.620	458.577
532253.0	7411317.0	6000	3525	-0.039	3610.774	978716.427	-130.766	141.538	-51.322	-40.550	458.646
532266.7	7411337.6	6000	3550	-0.039	3610.784	978716.437	-130.744	141.566	-51.332	-40.510	458.735
532281.5	7411357.3	6000	3575	-0.039	3610.794	978716.447	-130.722	141.590	-51.341	-40.473	458.813
532294.3	7411381.2	6000	3600	-0.039	3610.900	978716.553	-130.602	141.485	-51.303	-40.420	458.473
532309.0	7411400.8	6000	3625	-0.040	3610.983	978716.636	-130.507	141.367	-51.260	-40.400	458.092
532322.6	7411420.1	6000	3650	-0.040	3611.116	978716.769	-130.363	141.250	-51.218	-40.331	457.712
532336.0	7411440.9	6000	3675	-0.040	3611.154	978716.807	-130.312	141.186	-51.195	-40.321	457.504
532353.1	7411461.4	6000	3700	-0.041	3611.192	978716.845	-130.262	141.115	-51.169	-40.316	457.275
532365.2	7411483.7	6000	3725	-0.041	3611.255	978716.908	-130.186	141.055	-51.147	-40.278	457.079
532380.0	7411504.0	6000	3750	-0.041	3611.237	978716.890	-130.192	141.043	-51.143	-40.291	457.042
532392.2	7411523.1	6000	3775	-0.042	3611.200	978716.853	-130.217	141.041	-51.142	-40.319	457.035
532406.9	7411546.0	6000	3800	-0.042	3611.320	978716.973	-130.084	141.020	-51.135	-40.198	456.968
532421.8	7411564.5	6000	3825	-0.042	3611.431	978717.084	-129.962	140.990	-51.124	-40.095	456.871
532434.9	7411585.8	6000	3850	-0.042	3611.579	978717.232	-129.801	140.896	-51.090	-39.994	456.566
532448.4	7411604.5	6000	3875	-0.043	3611.743	978717.396	-129.626	140.814	-51.060	-39.872	456.298
532463.8	7411626.3	6000	3900	-0.043	3611.822	978717.475	-129.534	140.785	-51.049	-39.798	456.207
532477.3	7411646.8	6000	3925	-0.043	3611.938	978717.591	-129.406	140.732	-51.030	-39.704	456.033
532493.3	7411670.0	6000	3950	-0.044	3612.158	978717.811	-129.172	140.510	-50.950	-39.611	455.315
532508.1	7411689.5	6000	3975	-0.044	3612.213	978717.866	-129.105	140.435	-50.922	-39.593	455.070
532519.2	7411707.2	6000	4000	-0.045	3612.222	978717.875	-129.086	140.496	-50.944	-39.535	455.268
536196.1	7409999.6	6200	0	-0.052	3618.161	978723.814	-124.157	135.673	-49.196	-37.679	439.641
536209.1	7410608.6	6200	600	-0.051	3619.715	978725.368	-122.241	135.836	-49.255	-35.660	440.167
536201.5	7410802.9	6200	800	-0.050	3620.184	978725.837	-121.656	135.882	-49.272	-35.045	440.319
536197.6	7411020.7	6200	1000	-0.050	3620.308	978725.961	-121.403	136.174	-49.377	-34.606	441.263
536196.8	7411197.8	6200	1200	-0.049	3620.527	978726.180	-121.078	136.355	-49.443	-34.167	441.849
536202.5	7411415.7	6200	1400	-0.049	3620.624	978726.277	-120.852	136.382	-49.453	-33.922	441.939
536197.7	7411599.1	6200	1600	-0.049	3620.488	978726.141	-120.879	136.773	-49.595	-33.700	443.205
536195.2	7408595.1	6200	8600	-0.055	3615.394	978721.047	-127.759	135.633	-49.181	-41.307	439.512
536206.7	7408810.4	6200	8800	-0.055	3615.172	978720.825	-127.853	135.547	-49.150	-41.456	439.232
536194.7	7409005.2	6200	9000	-0.054	3615.691	978721.344	-127.218	135.343	-49.076	-40.951	438.570

536191.8	7409187.4	6200	9200	-0.054	3615.995	978721.648	-126.806	135.507	-49.136	-40.434	439.104
536189.5	7409409.0	6200	9400	-0.053	3616.764	978722.417	-125.905	135.525	-49.142	-39.522	439.162
536206.4	7409598.7	6200	9600	-0.053	3617.463	978723.116	-125.093	135.524	-49.142	-38.710	439.158
536203.6	7409808.1	6200	9800	-0.053	3617.687	978723.340	-124.745	135.641	-49.184	-38.288	439.535
/D305											
535353.8	7411936.1	0	5301	+0.000	3618.541	978723.702	-123.119	137.987	-50.035	-35.167	447.139
535353.8	7411936.1	0	5301	-0.007	3618.541	978723.702	-123.119	137.987	-50.035	-35.167	447.139
535353.8	7411936.1	0	5301	-0.122	3618.548	978723.702	-123.119	137.987	-50.035	-35.167	447.139
535353.8	7411936.1	0	5301	-0.007	3618.670	978723.702	-123.119	137.987	-50.035	-35.167	447.139
535996.9	7410000.0	0	6000	-0.043	3618.967	978724.121	-123.850	136.008	-49.317	-37.159	440.725
536612.6	7409999.0	0	6600	-0.042	3618.209	978723.363	-124.607	135.295	-49.059	-38.371	438.416
536805.4	7409999.0	0	6800	-0.041	3618.203	978723.357	-124.613	135.285	-49.055	-38.383	438.382
536995.0	7410002.5	0	7000	-0.041	3618.660	978723.814	-124.154	135.034	-48.964	-38.084	437.569
537204.6	7409994.0	0	7200	-0.040	3619.116	978724.270	-123.703	134.586	-48.802	-37.918	436.119
537412.7	7409987.9	0	7400	-0.039	3619.669	978724.823	-123.153	134.166	-48.649	-37.636	434.757
537592.3	7409989.7	0	7600	-0.038	3619.713	978724.867	-123.108	134.127	-48.635	-37.616	434.629
535590.6	7410602.4	600	5600	-0.025	3619.715	978724.869	-122.744	136.840	-49.619	-35.523	443.422
535792.5	7410600.7	600	5800	-0.026	3620.321	978725.475	-122.139	136.490	-49.492	-35.141	442.288
535990.4	7410607.8	600	6000	-0.027	3620.728	978725.882	-121.727	135.998	-49.313	-35.043	440.692
536613.7	7410605.7	600	6600	-0.028	3620.475	978725.629	-121.981	135.267	-49.048	-35.762	438.325
536787.7	7410578.9	600	6800	-0.029	3620.447	978725.601	-122.024	135.030	-48.962	-35.957	437.557
536997.3	7410602.7	600	7000	-0.033	3620.754	978725.908	-121.703	135.058	-48.973	-35.617	437.648
537190.9	7410601.8	600	7200	-0.034	3621.039	978726.193	-121.418	134.900	-48.915	-35.434	437.134
537389.2	7410594.8	600	7400	-0.036	3621.514	978726.668	-120.947	134.797	-48.878	-35.028	436.803
537584.1	7410612.3	600	7600	-0.037	3621.792	978726.946	-120.658	135.195	-49.022	-34.486	438.090
536197.8	7411599.2	6200	1600	-0.009	3621.009	978726.163	-120.857	136.782	-49.598	-33.673	443.233
536189.5	7409409.0	6200	9400	-0.073	3617.303	978722.457	-125.865	135.534	-49.145	-39.476	439.190
536408.1	7409993.3	6400	0	-0.016	3618.235	978723.389	-124.585	135.496	-49.131	-38.221	439.067
536406.1	7410601.8	6400	600	-0.014	3620.165	978725.319	-122.293	135.608	-49.172	-35.857	439.430
536408.2	7410812.4	6400	800	-0.013	3620.725	978725.879	-121.608	135.560	-49.155	-35.203	439.274
536392.2	7411016.5	6400	1000	-0.012	3620.845	978725.999	-121.367	135.648	-49.187	-34.905	439.560
536403.1	7411195.5	6400	1200	-0.011	3621.038	978726.192	-121.068	135.973	-49.305	-34.399	440.614
536408.9	7411405.8	6400	1400	-0.011	3621.066	978726.220	-120.915	136.364	-49.446	-33.996	441.881
536391.4	7411597.3	6400	1600	-0.010	3621.135	978726.289	-120.732	136.448	-49.477	-33.760	442.153
536404.6	7408605.3	6400	8600	-0.022	3616.391	978721.545	-127.255	135.488	-49.128	-40.895	439.040
536400.9	7408799.3	6400	8800	-0.021	3616.132	978721.286	-127.398	135.170	-49.013	-41.242	438.009
536413.1	7409005.0	6400	9000	-0.020	3616.478	978721.632	-126.930	135.001	-48.952	-40.881	437.463
536412.5	7409196.5	6400	9200	-0.019	3616.621	978721.775	-126.673	135.264	-49.047	-40.457	438.314
536400.1	7409394.1	6400	9400	-0.019	3617.052	978722.206	-126.124	135.263	-49.047	-39.908	438.313
536403.3	7409589.4	6400	9600	-0.018	3617.464	978722.618	-125.596	135.231	-49.035	-39.401	438.208
535397.9	7409393.0	9400	5400	-0.063	3617.297	978722.451	-125.882	136.650	-49.550	-38.781	442.807
535593.6	7409391.0	9400	5600	-0.064	3617.694	978722.848	-125.485	136.385	-49.454	-38.555	441.946
535789.3	7409393.8	9400	5800	-0.065	3617.526	978722.680	-125.651	136.188	-49.382	-38.846	441.308
536001.4	7409394.0	9400	6000	-0.066	3617.334	978722.488	-125.843	135.788	-49.237	-39.292	440.014
536594.1	7409400.5	9400	6600	-0.067	3617.161	978722.315	-126.011	134.972	-48.942	-39.981	437.370
536800.9	7409401.6	9400	6800	-0.067	3617.300	978722.454	-125.871	134.652	-48.825	-40.045	436.332
536990.5	7409405.9	9400	7000	-0.068	3617.463	978722.617	-125.706	134.474	-48.761	-39.992	435.756
537189.4	7409395.4	9400	7200	-0.069	3617.647	978722.801	-125.528	134.277	-48.689	-39.940	435.117
537396.9	7409405.3	9400	7400	-0.069	3617.980	978723.134	-125.188	134.091	-48.622	-39.720	434.513
537590.7	7409395.3	9400	7600	-0.070	3618.216	978723.370	-124.958	134.044	-48.605	-39.519	434.362
535604.4	7409596.8	9600	5600	-0.062	3617.979	978723.133	-125.078	136.514	-49.500	-38.065	442.364
535807.5	7409593.8	9600	5800	-0.061	3618.310	978723.464	-124.749	136.250	-49.405	-37.904	441.509
535989.2	7409603.0	9600	6000	-0.061	3618.077	978723.231	-124.976	135.894	-49.276	-38.358	440.355
536589.7	7409580.2	9600	6600	-0.060	3617.476	978722.630	-125.590	134.921	-48.923	-39.592	437.203
536796.8	7409595.8	9600	6800	-0.059	3617.361	978722.515	-125.695	134.756	-48.863	-39.802	436.669
536989.7	7409595.8	9600	7000	-0.058	3617.278	978722.432	-125.778	134.754	-48.862	-39.886	436.662
537196.6	7409582.6	9600	7200	-0.057	3617.451	978722.605	-125.612	134.523	-48.779	-39.868	435.914
537403.7	7409588.7	9600	7400	-0.056	3617.651	978722.805	-125.408	134.426	-48.744	-39.725	435.600
537603.8	7409609.6	9600	7600	-0.056	3617.850	978723.004	-125.197	134.267	-48.686	-39.615	435.084
535798.6	7409800.6	9800	5800	-0.045	3618.886	978724.040	-124.050	136.323	-49.431	-37.158	441.748
535998.1	7409796.3	9800	6000	-0.046	3618.579	978723.733	-124.359	136.025	-49.323	-37.657	440.782
536595.9	7409802.0	9800	6600	-0.048	3617.842	978722.996	-125.092	135.005	-48.953	-39.040	437.476
536787.0	7409794.0	9800	6800	-0.048	3617.707	978722.861	-125.231	134.958	-48.936	-39.209	437.324
536982.3	7409794.1	9800	7000	-0.049	3617.705	978722.859	-125.233	134.847	-48.896	-39.282	436.963
537196.3	7409796.6	9800	7200	-0.050	3617.797	978722.951	-125.139	134.702	-48.844	-39.280	436.494
537410.0	7409805.6	9800	7400	-0.051	3618.129	978723.283	-124.801	134.509	-48.774	-39.066	435.869
537616.3	7409806.1	9800	7600	-0.054	3618.734	978723.888	-124.196	133.774	-48.507	-38.928	433.488

/D310

535353.8	7411936.1	0	5301	+0.000	3621.541	978723.702	-123.119	137.987	-50.035	-35.167	447.139
535353.8	7411936.1	0	5301	+0.003	3621.541	978723.702	-123.119	137.987	-50.035	-35.167	447.139
535353.8	7411936.1	0	5301	-0.115	3621.538	978723.702	-123.119	137.987	-50.035	-35.167	447.139
535353.8	7411936.1	0	5301	-0.006	3621.653	978723.702	-123.119	137.987	-50.035	-35.167	447.139
535195.1	7410796.8	800	5200	-0.110	3622.338	978724.502	-122.996	136.820	-49.612	-35.788	443.357
535397.8	7410809.7	800	5400	-0.091	3622.540	978724.704	-122.786	136.940	-49.655	-35.501	443.746
535600.6	7410806.6	800	5600	-0.092	3622.929	978725.093	-122.399	136.668	-49.556	-35.287	442.864
535798.0	7410803.5	800	5800	-0.093	3623.646	978725.810	-121.683	136.265	-49.410	-34.829	441.558
535994.6	7410810.3	800	6000	-0.093	3623.884	978726.048	-121.441	136.156	-49.371	-34.656	441.207
535205.9	7410981.2	1000	5200	-0.098	3622.513	978724.677	-122.712	136.696	-49.567	-35.582	442.956
535402.7	7411022.3	1000	5400	-0.097	3622.936	978725.100	-122.264	136.562	-49.518	-35.220	442.521
535602.1	7410992.6	1000	5600	-0.096	3623.328	978725.492	-121.889	136.343	-49.439	-34.984	441.813
535792.7	7410986.4	1000	5800	-0.095	3623.935	978726.099	-121.286	136.061	-49.336	-34.561	440.899
535995.7	7410995.5	1000	6000	-0.095	3624.109	978726.273	-121.106	135.924	-49.287	-34.468	440.455
534801.0	7411182.6	1200	4800	-0.099	3621.557	978723.721	-123.548	137.632	-49.906	-35.822	445.988
534995.7	7411209.2	1200	5000	-0.100	3621.806	978723.970	-123.283	137.583	-49.888	-35.589	445.828
535208.3	7411210.0	1200	5200	-0.101	3622.331	978724.495	-122.758	137.247	-49.766	-35.277	444.740
535392.4	7411206.2	1200	5400	-0.102	3622.374	978724.538	-122.717	137.264	-49.773	-35.225	444.796
535599.8	7411211.7	1200	5600	-0.102	3622.703	978724.867	-122.384	136.988	-49.672	-35.069	443.900
535807.7	7411196.0	1200	5800	-0.103	3623.220	978725.384	-121.876	136.713	-49.573	-34.736	443.010
535986.6	7411199.4	1200	6000	-0.104	3623.616	978725.780	-121.478	136.587	-49.527	-34.418	442.601
534998.7	7411399.1	1400	5000	-0.108	3621.939	978724.103	-123.038	137.796	-49.965	-35.207	446.519
535206.2	7411399.0	1400	5200	-0.107	3622.051	978724.215	-122.925	137.625	-49.904	-35.204	445.967
535397.2	7411399.5	1400	5400	-0.106	3622.191	978724.355	-122.785	137.444	-49.838	-35.179	445.378
535597.3	7411392.1	1400	5600	-0.106	3622.657	978724.821	-122.323	137.043	-49.693	-34.972	444.081
535798.8	7411403.7	1400	5800	-0.105	3623.172	978725.336	-121.801	136.882	-49.634	-34.552	443.559
535404.3	7407603.7	7600	5400	-0.008	3615.592	978717.756	-131.641	138.691	-50.290	-43.240	449.419
535596.1	7407598.2	7600	5600	-0.007	3615.810	978717.974	-131.426	138.742	-50.309	-42.992	449.586
534797.6	7407803.6	7800	4800	-0.011	3612.353	978714.517	-134.762	142.034	-51.502	-44.230	460.252
535001.2	7407799.6	7800	5000	-0.010	3613.059	978715.223	-134.058	142.042	-51.505	-43.521	460.279
535197.0	7407802.8	7800	5200	-0.009	3614.285	978716.449	-132.830	140.405	-50.912	-43.336	454.975
535404.2	7407801.3	7800	5400	-0.021	3615.014	978717.178	-132.101	139.923	-50.737	-42.915	453.411
535607.7	7407793.7	7800	5600	-0.023	3614.610	978716.774	-132.509	141.280	-51.229	-42.458	457.809
535803.0	7407793.0	7800	5800	-0.024	3615.604	978717.768	-131.516	140.342	-50.889	-42.062	454.770
535996.6	7407999.7	7800	6000	-0.025	3616.397	978718.561	-130.718	139.666	-50.643	-41.696	452.579
536199.6	7407799.3	7800	6200	-0.025	3615.710	978717.874	-131.405	141.423	-51.281	-41.263	458.273
536333.0	7407778.3	7800	6400	-0.029	3612.801	978714.965	-134.327	146.127	-52.986	-41.186	473.515
534399.1	7408001.2	8000	4400	-0.013	3611.571	978713.735	-135.427	142.630	-51.718	-44.515	462.185
534596.4	7407999.8	8000	4600	-0.013	3612.437	978714.601	-134.561	141.685	-51.376	-44.252	459.121
534796.4	7407996.1	8000	4800	-0.015	3613.599	978715.763	-133.401	140.498	-50.945	-43.848	455.276
534994.8	7408000.6	8000	5000	-0.015	3614.507	978716.671	-132.490	139.949	-50.746	-43.287	453.497
535199.9	7407999.8	8000	5200	-0.016	3615.096	978717.260	-131.902	139.839	-50.706	-42.769	453.140
535396.5	7408002.7	8000	5400	-0.017	3615.602	978717.766	-131.394	139.651	-50.638	-42.380	452.532
535545.3	7408038.9	8000	5600	-0.031	3613.302	978715.466	-133.672	143.497	-52.033	-42.207	464.994
536395.9	7408000.0	8000	6400	-0.033	3617.711	978719.875	-129.285	139.484	-50.578	-40.378	451.990
536536.4	7408013.6	8000	6600	-0.034	3617.065	978719.229	-129.922	140.133	-50.813	-40.602	454.092
534599.1	7408202.0	8200	4600	-0.044	3613.367	978715.531	-133.511	140.613	-50.987	-43.885	455.648
534801.8	7408196.8	8200	4800	-0.043	3614.446	978716.610	-132.435	139.662	-50.642	-43.415	452.568
534993.0	7408197.8	8200	5000	-0.043	3615.133	978717.297	-131.747	139.088	-50.434	-43.093	450.705
535202.3	7408202.9	8200	5200	-0.042	3615.588	978717.752	-131.289	138.489	-50.217	-43.016	448.767
535400.3	7408198.3	8200	5400	-0.041	3615.880	978718.044	-130.999	138.052	-50.058	-43.006	447.348
535603.4	7408200.4	8200	5600	-0.041	3616.562	978718.726	-130.316	138.194	-50.110	-42.232	447.808
535797.3	7408200.7	8200	5800	-0.040	3616.785	978718.949	-130.092	139.022	-50.410	-41.480	450.494
535969.8	7408200.4	8200	6000	-0.038	3615.827	978717.991	-131.050	140.881	-51.084	-41.253	456.518
536211.5	7408230.2	8200	6200	-0.037	3617.485	978719.649	-129.374	139.676	-50.647	-40.345	452.613
536403.4	7408199.8	8200	6400	-0.036	3619.260	978721.424	-127.617	137.547	-49.875	-39.945	445.712
536600.1	7408198.5	8200	6600	-0.035	3619.078	978721.242	-127.799	137.047	-49.694	-40.446	444.094
534794.9	7408394.8	8400	4800	-0.045	3615.415	978717.579	-131.348	138.816	-50.335	-42.867	449.825
534998.9	7408398.5	8400	5000	-0.045	3615.472	978717.636	-131.289	138.617	-50.263	-42.935	449.181
535200.3	7408394.4	8400	5200	-0.046	3615.926	978718.090	-130.837	138.178	-50.104	-42.763	447.756
535396.9	7408400.9	8400	5400	-0.047	3616.377	978718.541	-130.382	137.434	-49.834	-42.782	445.346
535600.6	7408398.8	8400	5600	-0.047	3616.926	978719.090	-129.834	136.900	-49.641	-42.574	443.617
535794.0	7408398.5	8400	5800	-0.048	3617.341	978719.505	-129.418	136.858	-49.625	-42.186	443.481
536000.4	7408400.8	8400	6000	-0.048	3617.996	978720.160	-128.762	136.819	-49.611	-41.554	443.353
536199.5	7408398.5	8400	6200	-0.049	3619.081	978721.245	-127.678	136.567	-49.520	-40.631	442.537
536400.5	7408397.3	8400	6400	-0.050	3619.116	978721.280	-127.643	137.246	-49.766	-40.163	444.737
536601.8	7408398.4	8400	6600	-0.050	3619.799	978721.963	-126.959	136.397	-49.458	-40.020	441.988
536798.4	7408402.0	8400	6800	-0.051	3619.988	978722.152	-126.768	136.341	-49.438	-39.865	441.805

534805.3	7408599.7	8600	4800	-0.061	3615.767	978717.931	-130.874	138.112	-50.080	-42.842	447.544
534993.7	7408603.4	8600	5000	-0.060	3616.399	978718.563	-130.240	137.891	-50.000	-42.348	446.829
535209.1	7408601.5	8600	5200	-0.059	3616.790	978718.954	-129.850	137.740	-49.945	-42.055	446.338
535400.9	7408601.9	8600	5400	-0.056	3616.945	978719.109	-129.694	137.216	-49.755	-42.233	444.640
535602.9	7408599.5	8600	5600	-0.055	3617.256	978719.420	-129.384	136.571	-49.521	-42.334	442.550
535797.0	7408599.2	8600	5800	-0.055	3617.706	978719.870	-128.934	136.229	-49.397	-42.102	441.441
536002.6	7408602.5	8600	6000	-0.054	3618.207	978720.371	-128.431	135.895	-49.276	-41.812	440.361
536595.2	7408601.5	8600	6600	-0.053	3619.587	978721.751	-127.051	135.644	-49.185	-40.592	439.547
536794.4	7408599.7	8600	6800	-0.052	3620.167	978722.331	-126.471	135.748	-49.223	-39.946	439.884
537000.7	7408599.0	8600	7000	-0.052	3621.456	978723.620	-125.182	135.552	-49.152	-38.782	439.247
535004.1	7408798.0	8800	5000	-0.062	3617.052	978719.216	-129.471	137.303	-49.787	-41.955	444.923
535204.5	7408799.0	8800	5200	-0.062	3617.843	978720.007	-128.679	137.083	-49.707	-41.303	444.210
535398.4	7408797.7	8800	5400	-0.063	3618.021	978720.185	-128.502	136.831	-49.616	-41.286	443.394
535598.2	7408796.4	8800	5600	-0.064	3618.424	978720.588	-128.099	136.373	-49.449	-41.176	441.907
535790.8	7408793.6	8800	5800	-0.065	3618.129	978720.293	-128.395	136.127	-49.360	-41.629	441.112
536002.3	7408813.6	8800	6000	-0.066	3618.267	978720.431	-128.245	135.840	-49.256	-41.661	440.183
536599.2	7408801.2	8800	6600	-0.067	3619.231	978721.395	-127.288	135.241	-49.039	-41.085	438.242
536793.0	7408796.1	8800	6800	-0.068	3619.624	978721.788	-126.897	135.300	-49.060	-40.658	438.431
537002.2	7408812.4	8800	7000	-0.068	3620.453	978722.617	-126.059	135.071	-48.977	-39.965	437.690
537200.9	7408804.4	8800	7200	-0.069	3621.495	978723.659	-125.021	134.960	-48.937	-38.998	437.329
535207.3	7408998.9	9000	5200	-0.077	3618.357	978720.521	-128.046	136.946	-49.657	-40.757	443.766
535403.4	7409000.6	9000	5400	-0.076	3618.990	978721.154	-127.412	136.614	-49.537	-40.335	442.689
535606.7	7408998.0	9000	5600	-0.075	3619.162	978721.326	-127.241	136.391	-49.456	-40.306	441.968
535800.8	7409002.0	9000	5800	-0.074	3618.974	978721.138	-127.426	136.086	-49.345	-40.686	440.977
536016.1	7409002.4	9000	6000	-0.074	3619.010	978721.174	-127.390	135.665	-49.193	-40.918	439.613
536612.5	7408976.1	9000	6600	-0.072	3619.736	978721.900	-126.679	134.646	-48.823	-40.856	436.312
536804.0	7408989.9	9000	6800	-0.071	3620.022	978722.186	-126.384	134.687	-48.838	-40.536	436.444
537010.2	7408995.0	9000	7000	-0.071	3620.341	978722.505	-126.062	134.596	-48.805	-40.271	436.150
537193.1	7409000.0	9000	7200	-0.070	3620.562	978722.726	-125.838	134.549	-48.788	-40.077	435.998
535195.4	7409198.9	9200	5200	-0.005	3618.948	978721.112	-127.336	137.253	-49.769	-39.852	444.761
535398.6	7409200.4	9200	5400	-0.078	3619.429	978721.593	-126.854	136.880	-49.633	-39.607	443.552
535595.2	7409206.2	9200	5600	-0.079	3620.067	978722.231	-126.212	136.362	-49.445	-39.296	441.873
535790.9	7409206.5	9200	5800	-0.080	3619.921	978722.085	-126.358	136.098	-49.350	-39.610	441.016
536000.9	7409210.7	9200	6000	-0.080	3619.514	978721.678	-126.762	135.815	-49.247	-40.194	440.101
536601.5	7409198.8	9200	6600	-0.082	3619.864	978722.028	-126.418	134.948	-48.933	-40.403	437.292
536789.8	7409204.0	9200	6800	-0.082	3619.967	978722.131	-126.312	134.778	-48.871	-40.405	436.740
536997.4	7409198.7	9200	7000	-0.083	3620.394	978722.558	-125.888	134.323	-48.706	-40.271	435.266
537202.0	7409206.7	9200	7200	-0.084	3620.977	978723.141	-125.300	133.920	-48.560	-39.940	433.960
537403.1	7409191.3	9200	7400	-0.084	3620.930	978723.094	-125.356	134.044	-48.605	-39.916	434.362
535215.6	7409606.1	9600	5200	-0.089	3620.648	978722.812	-125.394	136.843	-49.620	-38.171	443.431

Black Adder Area

/	COORDS		GRID		drift	corr'd	obs	anom	freeair	bouguer	bouguer	height
/	E	N	x	y	meter	mgal	corr'n	corr'n	anom	(AHD)		
/	(2.67)											
/D306												
546360.5	7424939.2	0	5303	+0.000	3608.482	978713.136	-125.955	138.581	-50.250	-37.624	449.065	
546360.5	7424939.2	0	5303	-0.007	3608.482	978713.136	-125.955	138.581	-50.250	-37.624	449.065	
546360.5	7424939.2	0	5303	-0.167	3608.489	978713.136	-125.955	138.581	-50.250	-37.624	449.065	
546360.5	7424939.2	0	5303	+0.000	3608.656	978713.136	-125.955	138.581	-50.250	-37.624	449.065	
544798.9	7424079.7	4081	4800	-0.034	3608.948	978713.595	-126.008	139.971	-50.754	-36.791	453.569	
544599.3	7424284.7	4285	4600	-0.031	3606.974	978711.621	-127.861	143.104	-51.890	-36.647	463.721	
544796.7	7424285.7	4285	4800	-0.032	3609.099	978713.746	-125.735	139.869	-50.717	-36.583	453.238	
544399.2	7424489.3	4489	4400	-0.029	3606.524	978711.171	-128.190	143.328	-51.971	-36.834	464.446	
544598.5	7424489.4	4489	4600	-0.028	3608.041	978712.688	-126.673	141.080	-51.156	-36.749	457.160	
544799.7	7424488.1	4489	4800	-0.027	3608.803	978713.450	-125.911	139.854	-50.712	-36.769	453.189	
548001.4	7424489.1	4489	8000	-0.154	3610.712	978715.359	-123.996	135.601	-49.169	-37.564	439.406	
548199.4	7424492.8	4489	8200	-0.155	3610.920	978715.567	-123.785	135.426	-49.106	-37.465	438.841	
548398.5	7424494.9	4489	8400	-0.156	3611.417	978716.064	-123.287	134.945	-48.932	-37.273	437.281	
548597.1	7424493.3	4489	8600	-0.157	3611.583	978716.230	-123.121	134.836	-48.892	-37.177	436.928	
543998.6	7424693.9	4693	4000	-0.021	3607.573	978712.220	-127.021	141.022	-51.135	-37.134	456.974	
544199.3	7424690.9	4693	4200	-0.023	3607.766	978712.413	-126.829	140.756	-51.039	-37.112	456.111	
544400.2	7424694.1	4693	4400	-0.024	3608.343	978712.990	-126.250	140.394	-50.907	-36.763	454.938	
544599.4	7424693.4	4693	4600	-0.025	3608.816	978713.463	-125.777	139.857	-50.713	-36.633	453.197	
544799.0	7424693.0	4693	4800	-0.026	3608.578	978713.225	-126.015	139.523	-50.592	-37.084	452.115	
547206.4	7424714.2	4693	7200	-0.151	3609.942	978714.589	-124.634	136.532	-49.507	-37.609	442.423	

547401.0	7424695.8	4693	7400	-0.149	3610.017	978714.664	-124.569	136.241	-49.402	-37.730	441.482
547600.5	7424685.8	4693	7600	-0.148	3610.276	978714.923	-124.316	135.850	-49.260	-37.726	440.214
547797.5	7424685.6	4693	7800	-0.147	3610.589	978715.236	-124.003	135.665	-49.193	-37.530	439.616
548004.3	7424706.7	4693	8000	-0.146	3611.071	978715.718	-123.508	135.448	-49.114	-37.174	438.910
548198.0	7424694.4	4693	8200	-0.144	3611.226	978715.873	-123.360	135.246	-49.041	-37.154	438.257
544201.2	7424897.0	4897	4200	-0.020	3607.869	978712.516	-126.604	141.127	-51.173	-36.650	457.315
544398.7	7424897.1	4897	4400	-0.019	3608.231	978712.878	-126.242	140.595	-50.980	-36.627	455.591
544601.7	7424897.1	4897	4600	-0.017	3608.444	978713.091	-126.028	139.626	-50.629	-37.031	452.451
544801.3	7424897.3	4897	4800	-0.016	3608.311	978712.958	-126.161	139.533	-50.595	-37.223	452.148
546599.0	7424903.2	4897	6600	-0.135	3608.968	978713.615	-125.497	137.756	-49.951	-37.692	446.391
546804.9	7424894.1	4897	6800	-0.136	3609.290	978713.937	-125.180	137.429	-49.832	-37.584	445.330
547003.1	7424910.8	4897	7000	-0.137	3609.422	978714.069	-125.038	137.081	-49.706	-37.663	444.204
547194.0	7424907.0	4897	7200	-0.138	3609.528	978714.175	-124.934	136.782	-49.598	-37.750	443.234
547398.5	7424900.7	4897	7400	-0.140	3609.798	978714.445	-124.667	136.350	-49.441	-37.758	441.833
547598.7	7424893.0	4897	7600	-0.141	3610.215	978714.862	-124.254	135.973	-49.304	-37.586	440.612
547796.6	7424904.9	4897	7800	-0.142	3610.767	978715.414	-123.695	135.706	-49.208	-37.196	439.748
544399.1	7425101.0	5101	4400	-0.012	3608.084	978712.731	-126.268	140.248	-50.854	-36.875	454.465
544599.2	7425100.1	5101	4600	-0.014	3608.440	978713.087	-125.912	139.305	-50.513	-37.120	451.410
544796.7	7425100.3	5101	4800	-0.015	3608.479	978713.126	-125.873	139.109	-50.441	-37.206	450.773
545998.2	7425110.6	5101	6000	-0.130	3607.970	978712.617	-126.374	139.142	-50.454	-37.685	450.882
546198.3	7425101.0	5101	6200	-0.125	3607.635	978712.282	-126.714	139.706	-50.658	-37.666	452.710
546359.9	7425084.0	5101	6400	-0.124	3607.686	978712.333	-126.673	139.742	-50.671	-37.602	452.826
546608.4	7425112.5	5101	6600	-0.121	3608.690	978713.337	-125.651	138.173	-50.102	-37.580	447.741
546799.8	7425099.0	5101	6800	-0.120	3609.043	978713.690	-125.306	137.665	-49.918	-37.559	446.095
546996.8	7425096.0	5101	7000	-0.119	3609.010	978713.657	-125.340	137.544	-49.874	-37.670	445.704
547213.8	7425093.3	5101	7200	-0.117	3609.285	978713.932	-125.067	136.950	-49.659	-37.775	443.779
547386.0	7425099.0	5101	7400	-0.116	3609.387	978714.034	-124.961	136.622	-49.540	-37.879	442.714
544600.3	7425304.6	5305	4600	-0.009	3608.488	978713.135	-125.743	138.812	-50.334	-37.265	449.813
544787.9	7425297.7	5305	4800	-0.094	3608.463	978713.110	-125.772	138.887	-50.361	-37.246	450.056
545001.9	7425316.8	5305	5000	-0.095	3608.545	978713.192	-125.678	138.474	-50.211	-37.415	448.718
545199.4	7425320.8	5305	5200	-0.097	3608.228	978712.875	-125.993	138.692	-50.290	-37.591	449.422
545384.8	7425308.1	5305	5400	-0.099	3607.449	978712.096	-126.779	139.500	-50.583	-37.862	452.043
545592.2	7425321.0	5305	5600	-0.100	3607.319	978711.966	-126.901	139.762	-50.678	-37.817	452.890
545795.6	7425307.6	5305	5800	-0.101	3607.202	978711.849	-127.025	140.037	-50.778	-37.766	453.782
546000.4	7425306.2	5305	6000	-0.103	3606.930	978711.577	-127.298	140.860	-51.076	-37.515	456.447
546198.2	7425224.8	5305	6200	-0.127	3606.934	978711.581	-127.342	140.916	-51.097	-37.522	456.629
546417.5	7425337.7	5305	6400	-0.109	3606.521	978711.168	-127.687	141.801	-51.418	-37.304	459.499
546602.8	7425304.9	5305	6600	-0.112	3608.171	978712.818	-126.056	138.972	-50.392	-37.476	450.330
546790.6	7425315.9	5305	6800	-0.113	3608.285	978712.932	-125.936	138.652	-50.276	-37.559	449.294
547002.9	7425305.4	5305	7000	-0.114	3608.639	978713.286	-125.587	138.010	-50.043	-37.620	447.213
544598.4	7425507.6	5509	4600	-0.089	3608.390	978713.037	-125.721	138.631	-50.268	-37.359	449.224
544782.8	7425508.5	5509	4800	-0.088	3608.732	978713.379	-125.378	138.059	-50.061	-37.380	447.371
545009.6	7425510.1	5509	5000	-0.086	3608.580	978713.227	-125.529	138.058	-50.061	-37.531	447.370
545197.3	7425509.8	5509	5200	-0.082	3608.075	978712.722	-126.034	138.686	-50.288	-37.636	449.405
545398.4	7425509.8	5509	5400	-0.081	3607.538	978712.185	-126.570	139.455	-50.567	-37.682	451.896
545604.4	7425510.2	5509	5600	-0.080	3606.834	978711.481	-127.274	140.384	-50.904	-37.793	454.907
545798.1	7425496.7	5509	5800	-0.079	3605.603	978710.250	-128.512	142.694	-51.741	-37.560	462.390
545998.3	7425511.5	5509	6000	-0.076	3606.055	978710.702	-128.051	142.227	-51.572	-37.397	460.877
546195.4	7425514.5	5509	6200	-0.075	3607.410	978712.057	-126.694	140.462	-50.932	-37.164	455.160
546399.4	7425508.0	5509	6400	-0.073	3607.780	978712.427	-126.328	139.788	-50.688	-37.227	452.976
546597.5	7425514.6	5509	6600	-0.072	3607.735	978712.382	-126.368	139.654	-50.639	-37.354	452.539
544793.9	7425719.8	5713	4800	-0.057	3608.755	978713.402	-125.230	137.732	-49.942	-37.441	446.311
545000.7	7425714.1	5713	5000	-0.058	3608.052	978712.699	-125.936	138.667	-50.281	-37.550	449.343
545198.9	7425713.8	5713	5200	-0.059	3607.671	978712.318	-126.317	139.160	-50.460	-37.617	450.940
545399.5	7425710.5	5713	5400	-0.061	3606.064	978710.711	-127.926	141.598	-51.344	-37.672	458.839
545597.2	7425712.8	5713	5600	-0.062	3606.770	978711.417	-127.218	140.659	-51.004	-37.562	455.798
545800.4	7425710.3	5713	5800	-0.064	3605.232	978709.879	-128.757	143.177	-51.916	-37.497	463.955
546001.8	7425713.4	5713	6000	-0.068	3606.823	978711.470	-127.164	140.931	-51.102	-37.335	456.677
546203.3	7425714.8	5713	6200	-0.069	3607.510	978712.157	-126.476	139.940	-50.743	-37.278	453.468
544997.3	7425920.5	5917	5000	-0.056	3606.855	978711.502	-127.011	140.285	-50.868	-37.594	454.584
545200.6	7425916.7	5917	5200	-0.055	3606.957	978711.604	-126.911	140.080	-50.794	-37.625	453.921
545404.6	7425918.6	5917	5400	-0.051	3605.769	978710.416	-128.097	141.922	-51.462	-37.637	459.891
545597.2	7425918.7	5917	5600	-0.050	3605.409	978710.056	-128.457	142.549	-51.689	-37.597	461.923
545801.3	7425919.3	5917	5800	-0.049	3607.071	978711.718	-126.794	140.129	-50.812	-37.476	454.081
545998.1	7425915.2	5917	6000	-0.047	3606.945	978711.592	-126.922	140.436	-50.923	-37.409	455.075
545197.6	7426123.4	6121	5200	-0.039	3607.540	978712.187	-126.206	139.002	-50.403	-37.606	450.427
545391.8	7426110.9	6121	5400	-0.042	3606.135	978710.782	-127.618	141.209	-51.203	-37.612	457.578
545600.2	7426121.3	6121	5600	-0.044	3606.123	978710.770	-127.623	141.359	-51.257	-37.522	458.065

545199.1	7426326.0	6325	5200	-0.038	3607.040	978711.687	-126.586	139.610	-50.623	-37.599	452.397
/D307											
546360.5	7424939.2	0	5303	+0.000	3609.103	978713.136	-125.955	138.581	-50.250	-37.624	449.065
546360.5	7424939.2	0	5303	-0.007	3609.103	978713.136	-125.955	138.581	-50.250	-37.624	449.065
546360.5	7424939.2	0	5303	-0.181	3609.110	978713.136	-125.955	138.581	-50.250	-37.624	449.065
546360.5	7424939.2	0	5303	-0.005	3609.291	978713.136	-125.955	138.581	-50.250	-37.624	449.065
545800.1	7423060.8	3061	5800	-0.161	3610.021	978714.047	-126.157	138.542	-50.236	-37.851	448.938
545999.7	7423060.5	3061	6000	-0.162	3610.053	978714.079	-126.125	138.222	-50.120	-38.024	447.899
546197.5	7423061.8	3061	6200	-0.163	3609.854	978713.880	-126.323	138.170	-50.101	-38.254	447.732
546400.0	7423062.2	3061	6400	-0.164	3609.713	978713.739	-126.464	138.134	-50.088	-38.418	447.615
546603.6	7423061.8	3061	6600	-0.165	3609.776	978713.802	-126.400	137.965	-50.027	-38.462	447.068
546799.3	7423061.7	3061	6800	-0.167	3610.142	978714.168	-126.034	137.632	-49.906	-38.308	445.988
547003.9	7423062.0	3061	7000	-0.168	3610.601	978714.627	-125.575	137.401	-49.822	-37.996	445.239
545401.2	7423266.1	3265	5400	-0.160	3609.957	978713.983	-126.101	139.086	-50.433	-37.448	450.700
545597.4	7423262.8	3265	5600	-0.158	3609.796	978713.822	-126.263	138.972	-50.392	-37.683	450.331
545801.1	7423263.6	3265	5800	-0.157	3609.810	978713.836	-126.248	138.767	-50.317	-37.799	449.665
545998.6	7423266.1	3265	6000	-0.156	3609.732	978713.758	-126.325	138.439	-50.199	-38.084	448.603
546196.8	7423264.4	3265	6200	-0.156	3609.732	978713.758	-126.325	138.133	-50.088	-38.280	447.612
546395.0	7423266.0	3265	6400	-0.155	3609.951	978713.977	-126.105	137.793	-49.964	-38.276	446.509
546600.7	7423262.9	3265	6600	-0.154	3609.936	978713.962	-126.121	137.747	-49.948	-38.322	446.361
546801.6	7423262.5	3265	6800	-0.152	3609.944	978713.970	-126.113	137.764	-49.954	-38.303	446.415
546999.0	7423266.2	3265	7000	-0.149	3610.195	978714.221	-125.860	137.617	-49.901	-38.143	445.940
545400.3	7423468.2	3469	5400	-0.139	3609.653	978713.679	-126.285	139.081	-50.431	-37.635	450.683
545597.1	7423467.5	3469	5600	-0.140	3609.681	978713.707	-126.257	138.894	-50.363	-37.727	450.077
545797.9	7423468.4	3469	5800	-0.141	3609.568	978713.594	-126.369	138.766	-50.317	-37.920	449.663
545997.8	7423466.8	3469	6000	-0.142	3609.608	978713.634	-126.330	138.452	-50.203	-38.081	448.647
546194.5	7423470.0	3469	6200	-0.143	3609.780	978713.806	-126.155	138.180	-50.105	-38.080	447.763
546397.9	7423475.5	3469	6400	-0.144	3609.954	978713.980	-125.978	137.978	-50.031	-38.031	447.110
546600.1	7423470.8	3469	6600	-0.145	3610.093	978714.119	-125.841	137.582	-49.888	-38.147	445.825
546795.2	7423470.9	3469	6800	-0.146	3610.274	978714.300	-125.660	137.258	-49.770	-38.172	444.775
547000.0	7423470.5	3469	7000	-0.148	3610.264	978714.290	-125.670	137.207	-49.752	-38.214	444.612
545198.6	7423672.3	3673	5200	-0.138	3609.464	978713.490	-126.353	139.287	-50.506	-37.573	451.350
545399.7	7423675.1	3673	5400	-0.137	3609.531	978713.557	-126.284	139.021	-50.410	-37.673	450.489
545600.2	7423674.3	3673	5600	-0.136	3609.601	978713.627	-126.215	138.788	-50.325	-37.752	449.734
545800.5	7423673.4	3673	5800	-0.135	3609.617	978713.643	-126.199	138.556	-50.241	-37.884	448.982
545997.0	7423673.0	3673	6000	-0.134	3609.641	978713.667	-126.175	138.359	-50.170	-37.985	448.345
546206.9	7423672.2	3673	6200	-0.133	3609.907	978713.933	-125.909	138.133	-50.088	-37.863	447.613
546401.0	7423672.6	3673	6400	-0.132	3609.951	978713.977	-125.864	137.961	-50.025	-37.928	447.055
546600.7	7423678.6	3673	6600	-0.131	3609.963	978713.989	-125.848	137.711	-49.934	-38.072	446.243
546797.8	7423673.2	3673	6800	-0.130	3610.096	978714.122	-125.718	137.478	-49.850	-38.090	445.489
546998.0	7423672.0	3673	7000	-0.129	3610.228	978714.254	-125.586	137.132	-49.725	-38.179	444.367
545003.5	7423876.1	3877	5000	-0.117	3609.318	978713.344	-126.379	139.719	-50.663	-37.323	452.750
545200.8	7423878.4	3877	5200	-0.118	3609.456	978713.482	-126.239	139.239	-50.489	-37.489	451.197
545401.1	7423877.7	3877	5400	-0.119	3609.624	978713.650	-126.071	138.928	-50.376	-37.520	450.187
545597.6	7423875.3	3877	5600	-0.120	3609.576	978713.602	-126.121	138.633	-50.269	-37.757	449.231
545802.2	7423878.2	3877	5800	-0.121	3609.729	978713.755	-125.965	138.381	-50.178	-37.762	448.415
545999.6	7423879.0	3877	6000	-0.122	3609.848	978713.874	-125.846	138.175	-50.103	-37.774	447.748
546201.6	7423876.1	3877	6200	-0.124	3609.837	978713.863	-125.858	138.059	-50.061	-37.860	447.371
546397.1	7423881.6	3877	6400	-0.125	3609.834	978713.860	-125.857	137.902	-50.004	-37.959	446.863
546603.5	7423879.0	3877	6600	-0.126	3609.855	978713.881	-125.837	137.757	-49.951	-38.032	446.392
546800.3	7423872.5	3877	6800	-0.127	3610.010	978714.036	-125.686	137.481	-49.851	-38.056	445.499
546999.2	7423878.1	3877	7000	-0.128	3610.085	978714.111	-125.607	137.244	-49.765	-38.128	444.732
545000.3	7424080.3	4081	5000	-0.110	3609.440	978713.466	-126.136	139.571	-50.609	-37.175	452.270
545196.8	7424085.3	4081	5200	-0.109	3609.516	978713.542	-126.057	139.243	-50.490	-37.304	451.208
545394.5	7424082.5	4081	5400	-0.108	3609.444	978713.470	-126.130	138.954	-50.385	-37.562	450.272
545595.3	7424084.9	4081	5600	-0.107	3609.618	978713.644	-125.955	138.545	-50.237	-37.646	448.948
545799.5	7424083.1	4081	5800	-0.106	3609.793	978713.819	-125.780	138.221	-50.120	-37.679	447.897
546000.5	7424083.8	4081	6000	-0.105	3609.866	978713.892	-125.706	138.033	-50.051	-37.725	447.288
546197.0	7424079.2	4081	6200	-0.104	3609.828	978713.854	-125.747	137.791	-49.964	-37.919	446.505
546394.3	7424083.1	4081	6400	-0.103	3610.009	978714.035	-125.563	137.576	-49.886	-37.873	445.806
546599.7	7424077.7	4081	6600	-0.102	3610.091	978714.117	-125.484	137.434	-49.834	-37.884	445.347
546795.3	7424083.5	4081	6800	-0.101	3610.076	978714.102	-125.495	137.280	-49.778	-37.993	444.848
547000.5	7424079.8	4081	7000	-0.100	3610.090	978714.116	-125.483	137.043	-49.693	-38.132	444.081
545005.5	7424275.4	4285	5000	-0.083	3609.645	978713.671	-125.816	139.339	-50.525	-37.002	451.519
545203.4	7424289.5	4285	5200	-0.084	3609.343	978713.369	-126.109	139.175	-50.465	-37.400	450.987
545408.3	7424281.7	4285	5400	-0.086	3609.280	978713.306	-126.176	138.957	-50.386	-37.606	450.281
545605.6	7424295.0	4285	5600	-0.087	3609.617	978713.643	-125.831	138.475	-50.212	-37.567	448.721
545799.5	7424290.9	4285	5800	-0.088	3609.800	978713.826	-125.650	138.141	-50.091	-37.599	447.639

546010.1	7424286.5	4285	6000	-0.090	3609.740	978713.766	-125.712	137.922	-50.011	-37.801	446.929
546192.6	7424291.4	4285	6200	-0.091	3609.978	978714.004	-125.471	137.574	-49.885	-37.782	445.801
546402.4	7424283.4	4285	6400	-0.095	3610.059	978714.085	-125.395	137.323	-49.794	-37.866	444.986
546599.8	7424285.5	4285	6600	-0.096	3610.100	978714.126	-125.352	137.187	-49.745	-37.909	444.547
546799.7	7424282.6	4285	6800	-0.097	3610.304	978714.330	-125.149	136.954	-49.660	-37.856	443.790
547000.0	7424284.4	4285	7000	-0.098	3610.583	978714.609	-124.869	136.678	-49.560	-37.751	442.897
548601.9	7424287.9	4285	8600	-0.013	3612.077	978716.103	-123.370	135.083	-48.982	-37.268	437.729
548796.4	7424293.7	4285	8800	-0.014	3612.121	978716.147	-123.322	135.044	-48.968	-37.245	437.603
549001.4	7424291.0	4285	9000	-0.016	3611.977	978716.003	-123.467	135.154	-49.008	-37.320	437.960
544998.0	7424491.2	4489	5000	-0.081	3609.361	978713.387	-125.972	139.191	-50.471	-37.253	451.039
545203.0	7424474.2	4489	5200	-0.080	3609.347	978713.373	-125.996	138.880	-50.359	-37.474	450.034
545355.7	7424472.3	4489	5400	-0.079	3609.006	978713.032	-126.338	139.429	-50.557	-37.466	451.810
545592.4	7424491.9	4489	5600	-0.075	3609.718	978713.744	-125.614	138.197	-50.111	-37.527	447.819
545802.6	7424482.1	4489	5800	-0.073	3609.646	978713.672	-125.691	138.011	-50.044	-37.723	447.218
546000.8	7424480.4	4489	6000	-0.072	3609.760	978713.786	-125.578	137.766	-49.955	-37.766	446.423
546206.8	7424504.6	4489	6200	-0.071	3609.972	978713.998	-125.351	137.430	-49.833	-37.753	445.335
546401.4	7424498.1	4489	6400	-0.069	3610.169	978714.195	-125.157	137.206	-49.752	-37.703	444.608
546613.0	7424489.3	4489	6600	-0.068	3610.259	978714.285	-125.072	136.951	-49.659	-37.780	443.783
546799.1	7424487.2	4489	6800	-0.067	3610.477	978714.503	-124.855	136.785	-49.599	-37.669	443.245
547001.3	7424487.9	4489	7000	-0.065	3610.777	978714.803	-124.554	136.528	-49.506	-37.532	442.412
548001.2	7424489.2	4489	8000	-0.010	3611.360	978715.386	-123.969	135.603	-49.170	-37.536	439.412
545180.9	7424700.6	4693	5200	-0.052	3609.294	978713.320	-125.915	138.876	-50.357	-37.396	450.020
545392.8	7424702.2	4693	5400	-0.054	3609.462	978713.488	-125.745	138.358	-50.169	-37.557	448.341
545599.0	7424691.8	4693	5600	-0.055	3609.444	978713.470	-125.769	138.172	-50.102	-37.699	447.738
545797.1	7424706.6	4693	5800	-0.056	3609.501	978713.527	-125.703	138.011	-50.043	-37.735	447.217
545987.8	7424704.6	4693	6000	-0.057	3609.536	978713.562	-125.669	137.901	-50.004	-37.771	446.861
546213.7	7424703.0	4693	6200	-0.059	3609.653	978713.679	-125.552	137.839	-49.981	-37.695	446.658
546401.7	7424695.9	4693	6400	-0.060	3609.901	978713.927	-125.308	137.509	-49.861	-37.661	445.590
546597.2	7424688.8	4693	6600	-0.062	3610.011	978714.037	-125.202	137.288	-49.781	-37.696	444.873
546800.2	7424695.0	4693	6800	-0.063	3610.308	978714.334	-124.901	137.010	-49.681	-37.571	443.974
547000.0	7424694.3	4693	7000	-0.064	3610.492	978714.518	-124.717	136.724	-49.577	-37.570	443.045
545001.4	7424914.1	4897	5000	-0.048	3608.964	978712.990	-126.119	139.239	-50.489	-37.368	451.197
545196.8	7424910.1	4897	5200	-0.046	3609.158	978713.184	-125.927	138.878	-50.358	-37.406	450.026
545401.4	7424908.1	4897	5400	-0.044	3609.216	978713.242	-125.869	138.510	-50.225	-37.583	448.835
545600.8	7424896.0	4897	5600	-0.042	3609.258	978713.284	-125.834	138.341	-50.163	-37.656	448.285
545801.3	7424903.8	4897	5800	-0.041	3608.894	978712.920	-126.193	138.576	-50.248	-37.865	449.048
546005.6	7424898.2	4897	6000	-0.039	3609.052	978713.078	-126.038	138.373	-50.175	-37.840	448.390
546201.9	7424894.4	4897	6200	-0.038	3609.286	978713.312	-125.806	138.312	-50.153	-37.647	448.192
546400.3	7424896.9	4897	6400	-0.037	3609.311	978713.337	-125.779	138.297	-50.147	-37.630	448.142
544995.7	7425105.6	5101	5000	-0.028	3609.120	978713.146	-125.849	138.867	-50.354	-37.336	449.991
545202.5	7425111.7	5101	5200	-0.030	3608.905	978712.931	-126.060	138.859	-50.351	-37.552	449.964
545390.5	7425107.2	5101	5400	-0.031	3608.700	978712.726	-126.268	138.965	-50.389	-37.692	450.309
545586.8	7425093.3	5101	5600	-0.032	3608.638	978712.664	-126.338	138.983	-50.396	-37.750	450.367
545805.6	7425097.7	5101	5800	-0.034	3608.441	978712.467	-126.532	139.178	-50.467	-37.820	450.999
544787.9	7425297.6	5305	4800	-0.113	3609.086	978713.112	-125.770	138.889	-50.362	-37.243	450.062
545197.1	7425509.6	5509	5200	-0.177	3608.696	978712.722	-126.034	138.693	-50.291	-37.631	449.428
/D308											
546360.5	7424939.2	0	5303	+0.000	3609.712	978713.136	-125.955	138.581	-50.250	-37.624	449.065
546360.5	7424939.2	0	5303	-0.009	3609.712	978713.136	-125.955	138.581	-50.250	-37.624	449.065
546360.5	7424939.2	0	5303	-0.170	3609.721	978713.136	-125.955	138.581	-50.250	-37.624	449.065
546360.5	7424939.2	0	5303	-0.008	3609.891	978713.136	-125.955	138.581	-50.250	-37.624	449.065
546802.0	7421836.6	1837	6800	-0.034	3611.763	978715.178	-125.750	137.763	-49.953	-37.940	446.412
546598.7	7422041.4	2041	6600	-0.033	3611.632	978715.047	-125.760	137.938	-50.017	-37.839	446.979
546799.9	7422041.5	2041	6800	-0.032	3611.483	978714.898	-125.908	137.932	-50.015	-37.991	446.961
547000.1	7422041.8	2041	7000	-0.031	3611.485	978714.900	-125.906	137.693	-49.928	-38.141	446.187
546599.6	7422245.3	2245	6600	-0.028	3611.215	978714.630	-126.056	137.986	-50.034	-38.104	447.137
546800.0	7422243.9	2245	6800	-0.029	3610.999	978714.414	-126.272	138.084	-50.070	-38.258	447.453
547003.7	7422247.0	2245	7000	-0.030	3610.899	978714.314	-126.370	137.889	-49.999	-38.481	446.820
546399.0	7422450.3	2449	6400	-0.027	3611.166	978714.581	-125.984	138.080	-50.068	-37.973	447.439
546600.2	7422448.1	2449	6600	-0.027	3611.002	978714.417	-126.149	137.962	-50.026	-38.212	447.058
546797.2	7422450.5	2449	6800	-0.026	3610.693	978714.108	-126.456	137.942	-50.018	-38.533	446.992
546998.7	7422446.2	2449	7000	-0.025	3610.707	978714.122	-126.444	137.923	-50.011	-38.533	446.930
545998.6	7422654.9	2653	6000	-0.019	3610.691	978714.106	-126.339	138.606	-50.259	-37.992	449.145
546202.4	7422654.8	2653	6200	-0.020	3610.749	978714.164	-126.280	138.430	-50.195	-38.046	448.574
546397.5	7422652.4	2653	6400	-0.021	3610.855	978714.270	-126.175	138.080	-50.068	-38.164	447.439
546595.5	7422654.1	2653	6600	-0.022	3610.763	978714.178	-126.266	137.954	-50.023	-38.335	447.032
546802.5	7422654.0	2653	6800	-0.023	3610.719	978714.134	-126.310	137.791	-49.964	-38.482	446.503
546998.6	7422654.5	2653	7000	-0.024	3610.988	978714.403	-126.040	137.599	-49.894	-38.335	445.881

545999.8	7422858.3	2857	6000	-0.018	3610.575	978713.990	-126.334	138.560	-50.243	-38.016	448.997
546197.4	7422856.8	2857	6200	-0.017	3610.451	978713.866	-126.459	138.421	-50.192	-38.230	448.544
546398.5	7422858.0	2857	6400	-0.016	3610.447	978713.862	-126.462	138.171	-50.101	-38.392	447.734
546600.9	7422857.9	2857	6600	-0.015	3610.573	978713.988	-126.335	137.851	-49.985	-38.470	446.697
546801.7	7422857.9	2857	6800	-0.015	3610.757	978714.172	-126.151	137.679	-49.923	-38.395	446.141
546999.5	7422859.7	2857	7000	-0.012	3611.022	978714.437	-125.884	137.496	-49.857	-38.245	445.549
547196.4	7422855.0	2857	7200	-0.161	3611.395	978714.810	-125.514	137.221	-49.757	-38.050	444.656
547003.9	7423062.1	3061	7000	-0.165	3611.243	978714.658	-125.543	137.402	-49.823	-37.964	445.243
547200.4	7423065.3	3061	7200	-0.159	3611.184	978714.599	-125.600	137.356	-49.806	-38.050	445.094
547399.6	7423052.3	3061	7400	-0.158	3611.396	978714.811	-125.396	136.999	-49.676	-38.073	443.936
547593.5	7423065.8	3061	7600	-0.156	3611.458	978714.873	-125.325	136.776	-49.596	-38.144	443.216
547798.1	7423058.5	3061	7800	-0.155	3611.472	978714.887	-125.315	136.442	-49.475	-38.348	442.133
547987.5	7423062.5	3061	8000	-0.154	3611.898	978715.313	-124.886	136.109	-49.354	-38.131	441.053
548194.6	7423060.6	3061	8200	-0.153	3611.926	978715.341	-124.859	135.990	-49.311	-38.180	440.667
548393.9	7423059.6	3061	8400	-0.151	3612.043	978715.458	-124.742	135.875	-49.269	-38.136	440.296
548587.1	7423064.6	3061	8600	-0.150	3612.153	978715.568	-124.629	135.738	-49.219	-38.110	439.852
548787.2	7423059.6	3061	8800	-0.149	3612.232	978715.647	-124.553	135.594	-49.167	-38.126	439.384
548994.6	7423063.3	3061	9000	-0.148	3612.360	978715.775	-124.422	135.415	-49.102	-38.109	438.804
549195.9	7423054.7	3061	9200	-0.147	3612.607	978716.022	-124.180	135.170	-49.013	-38.023	438.011
547199.0	7423257.1	3265	7200	-0.132	3611.332	978714.747	-125.339	137.075	-49.704	-37.968	444.182
547406.1	7423264.9	3265	7400	-0.133	3611.346	978714.761	-125.320	137.021	-49.685	-37.983	444.010
547596.2	7423272.3	3265	7600	-0.135	3611.252	978714.667	-125.409	136.869	-49.629	-38.169	443.515
547790.8	7423270.3	3265	7800	-0.136	3611.378	978714.793	-125.284	136.552	-49.514	-38.246	442.488
547995.3	7423267.1	3265	8000	-0.137	3611.436	978714.851	-125.227	136.514	-49.501	-38.214	442.365
548198.1	7423272.3	3265	8200	-0.138	3611.734	978715.149	-124.926	136.015	-49.320	-38.230	440.750
548389.6	7423275.2	3265	8400	-0.140	3611.777	978715.192	-124.881	136.034	-49.326	-38.173	440.809
548595.0	7423272.6	3265	8600	-0.141	3611.758	978715.173	-124.901	136.045	-49.331	-38.186	440.846
548801.5	7423260.0	3265	8800	-0.142	3612.245	978715.660	-124.421	135.426	-49.106	-38.101	438.839
549003.4	7423271.7	3265	9000	-0.143	3612.326	978715.741	-124.333	135.366	-49.084	-38.051	438.644
549189.6	7423270.0	3265	9200	-0.145	3612.446	978715.861	-124.213	135.312	-49.065	-37.966	438.471
549398.0	7423272.6	3265	9400	-0.113	3612.898	978716.313	-123.759	134.835	-48.892	-37.816	436.926
547200.3	7423469.5	3469	7200	-0.130	3611.165	978714.580	-125.380	137.023	-49.685	-38.042	444.016
547415.2	7423459.2	3469	7400	-0.129	3611.331	978714.746	-125.219	136.703	-49.569	-38.085	442.979
547595.2	7423466.3	3469	7600	-0.128	3611.227	978714.642	-125.319	136.521	-49.503	-38.301	442.389
547795.3	7423472.7	3469	7800	-0.126	3611.374	978714.789	-125.168	136.325	-49.432	-38.275	441.753
548001.2	7423471.9	3469	8000	-0.125	3611.538	978714.953	-125.004	136.176	-49.378	-38.206	441.270
548207.7	7423471.4	3469	8200	-0.124	3611.775	978715.190	-124.767	135.912	-49.282	-38.137	440.416
548414.2	7423473.6	3469	8400	-0.123	3611.946	978715.361	-124.594	135.809	-49.245	-38.030	440.082
548594.1	7423470.3	3469	8600	-0.122	3612.128	978715.543	-124.414	135.591	-49.166	-37.989	439.373
548791.1	7423467.8	3469	8800	-0.121	3612.408	978715.823	-124.135	135.331	-49.071	-37.876	438.531
548991.4	7423470.9	3469	9000	-0.119	3612.344	978715.759	-124.197	135.188	-49.020	-38.029	438.068
549191.6	7423462.9	3469	9200	-0.116	3612.500	978715.915	-124.045	135.049	-48.969	-37.965	437.618
549411.6	7423473.6	3469	9400	-0.111	3612.533	978715.948	-124.005	135.050	-48.970	-37.925	437.621
549607.4	7423481.5	3469	9600	-0.110	3612.800	978716.215	-123.733	134.770	-48.868	-37.832	436.713
547208.8	7423673.1	3673	7200	-0.091	3610.879	978714.294	-125.545	136.966	-49.664	-38.244	443.829
547402.9	7423670.7	3673	7400	-0.093	3611.048	978714.463	-125.377	136.772	-49.594	-38.199	443.202
547587.1	7423673.6	3673	7600	-0.094	3611.024	978714.439	-125.399	136.545	-49.512	-38.366	442.466
547801.0	7423676.5	3673	7800	-0.095	3611.284	978714.699	-125.137	136.264	-49.410	-38.283	441.557
547998.3	7423670.7	3673	8000	-0.097	3611.466	978714.881	-124.958	136.056	-49.334	-38.237	440.881
548192.4	7423673.9	3673	8200	-0.098	3611.621	978715.036	-124.801	135.878	-49.270	-38.193	440.306
548391.2	7423677.4	3673	8400	-0.099	3611.902	978715.317	-124.517	135.745	-49.222	-37.994	439.873
548595.4	7423681.5	3673	8600	-0.101	3612.016	978715.431	-124.401	135.475	-49.124	-38.049	439.000
548790.6	7423674.4	3673	8800	-0.102	3612.168	978715.583	-124.252	135.350	-49.078	-37.981	438.593
549001.7	7423679.7	3673	9000	-0.104	3612.538	978715.953	-123.879	134.970	-48.941	-37.850	437.363
549209.2	7423679.2	3673	9200	-0.105	3612.725	978716.140	-123.692	134.796	-48.878	-37.773	436.800
549389.7	7423680.1	3673	9400	-0.107	3612.762	978716.177	-123.654	134.773	-48.869	-37.750	436.724
549604.4	7423679.9	3673	9600	-0.108	3612.885	978716.300	-123.531	134.568	-48.795	-37.757	436.061
547199.5	7423878.0	3877	7200	-0.057	3610.715	978714.130	-125.588	137.036	-49.690	-38.242	444.057
547398.4	7423877.0	3877	7400	-0.056	3610.799	978714.214	-125.504	136.824	-49.613	-38.293	443.371
547593.9	7423877.6	3877	7600	-0.055	3610.987	978714.402	-125.315	136.463	-49.482	-38.335	442.200
547797.9	7423879.6	3877	7800	-0.054	3611.257	978714.672	-125.044	136.239	-49.401	-38.206	441.475
548000.5	7423876.1	3877	8000	-0.053	3611.561	978714.976	-124.742	135.960	-49.300	-38.081	440.569
548200.9	7423878.4	3877	8200	-0.052	3611.792	978715.207	-124.509	135.635	-49.182	-38.056	439.517
548394.4	7423877.6	3877	8400	-0.051	3611.976	978715.391	-124.325	135.571	-49.159	-37.913	439.309
548598.7	7423875.3	3877	8600	-0.050	3612.130	978715.545	-124.172	135.595	-49.167	-37.744	439.387
548798.4	7423878.7	3877	8800	-0.049	3612.401	978715.816	-123.898	135.226	-49.033	-37.706	438.191
549002.8	7423878.6	3877	9000	-0.048	3612.660	978716.075	-123.639	134.800	-48.879	-37.718	436.811
549198.0	7423876.3	3877	9200	-0.047	3612.791	978716.206	-123.509	134.638	-48.820	-37.692	436.286

549399.5	7423876.6	3877	9400	-0.043	3612.810	978716.225	-123.490	134.630	-48.817	-37.677	436.261
549598.9	7423877.1	3877	9600	-0.040	3612.999	978716.414	-123.300	134.514	-48.775	-37.561	435.884
549797.4	7423876.8	3877	9800	-0.038	3613.264	978716.679	-123.035	134.267	-48.686	-37.454	435.083
545000.3	7424080.3	4081	5000	-0.006	3610.076	978713.491	-126.111	139.575	-50.610	-37.147	452.283
547201.1	7424081.5	4081	7200	-0.058	3610.943	978714.358	-125.240	136.835	-49.617	-38.021	443.407
547401.0	7424084.4	4081	7400	-0.059	3610.879	978714.294	-125.301	136.728	-49.578	-38.152	443.059
547599.5	7424083.1	4081	7600	-0.060	3610.835	978714.250	-125.346	136.486	-49.491	-38.350	442.276
547797.6	7424082.3	4081	7800	-0.061	3611.264	978714.679	-124.917	136.047	-49.331	-38.201	440.851
547996.6	7424082.4	4081	8000	-0.061	3611.485	978714.900	-124.695	135.926	-49.287	-38.057	440.461
548197.4	7424082.9	4081	8200	-0.062	3612.057	978715.472	-124.123	135.592	-49.166	-37.697	439.378
548401.3	7424080.7	4081	8400	-0.063	3612.312	978715.727	-123.869	135.398	-49.096	-37.567	438.749
548595.8	7424080.1	4081	8600	-0.064	3612.302	978715.717	-123.879	135.320	-49.067	-37.627	438.495
548798.9	7424082.2	4081	8800	-0.065	3612.204	978715.619	-123.975	135.449	-49.114	-37.640	438.914
548999.3	7424080.9	4081	9000	-0.066	3612.280	978715.695	-123.899	135.348	-49.078	-37.629	438.587
549198.0	7424084.6	4081	9200	-0.067	3612.588	978716.003	-123.589	134.977	-48.943	-37.555	437.384
549397.5	7424084.6	4081	9400	-0.045	3612.780	978716.195	-123.396	134.862	-48.902	-37.436	437.012
547200.6	7424286.9	4285	7200	-0.077	3611.345	978714.760	-124.716	136.505	-49.497	-37.708	442.335
547398.9	7424285.6	4285	7400	-0.076	3611.397	978714.812	-124.664	136.336	-49.436	-37.764	441.788
547598.6	7424284.5	4285	7600	-0.075	3611.186	978714.601	-124.876	136.308	-49.426	-37.993	441.698
547799.4	7424284.5	4285	7800	-0.074	3611.357	978714.772	-124.704	136.128	-49.361	-37.937	441.115
548000.0	7424287.4	4285	8000	-0.073	3611.966	978715.381	-124.093	135.642	-49.184	-37.635	439.540
548197.0	7424286.0	4285	8200	-0.072	3612.181	978715.596	-123.879	135.476	-49.124	-37.527	439.002
548394.0	7424282.6	4285	8400	-0.070	3612.481	978715.896	-123.580	135.122	-48.996	-37.454	437.854
547001.3	7424487.8	4489	7000	-0.088	3611.424	978714.839	-124.518	136.533	-49.508	-37.493	442.428
547199.0	7424488.3	4489	7200	-0.078	3611.433	978714.848	-124.509	136.342	-49.438	-37.605	441.809
547394.2	7424488.8	4489	7400	-0.079	3611.452	978714.867	-124.489	136.162	-49.373	-37.700	441.224
547597.1	7424488.4	4489	7600	-0.080	3611.419	978714.834	-124.522	135.997	-49.313	-37.838	440.689
547802.7	7424488.5	4489	7800	-0.081	3611.727	978715.142	-124.213	135.827	-49.252	-37.638	440.140
/D309											
546360.5	7424939.2	0	5303	+0.000	3610.288	978713.136	-125.955	138.581	-50.250	-37.624	449.065
546360.5	7424939.2	0	5303	-0.004	3610.288	978713.136	-125.955	138.581	-50.250	-37.624	449.065
546360.5	7424939.2	0	5303	-0.102	3610.292	978713.136	-125.955	138.581	-50.250	-37.624	449.065
546360.5	7424939.2	0	5303	-0.009	3610.394	978713.136	-125.955	138.581	-50.250	-37.624	449.065
548598.2	7421430.5	1429	8600	-0.089	3613.440	978716.284	-124.881	135.684	-49.200	-38.397	439.676
548399.1	7421632.1	1633	8400	-0.086	3612.960	978715.804	-125.242	136.136	-49.364	-38.469	441.142
548601.0	7421631.6	1633	8600	-0.088	3613.079	978715.923	-125.123	135.884	-49.272	-38.511	440.324
548006.6	7421832.0	1837	8000	-0.084	3612.684	978715.528	-125.400	136.408	-49.462	-38.455	442.021
548199.5	7421835.6	1837	8200	-0.083	3612.695	978715.539	-125.387	136.266	-49.411	-38.531	441.563
548397.9	7421840.2	1837	8400	-0.082	3612.728	978715.572	-125.351	136.135	-49.363	-38.579	441.137
548597.6	7421838.2	1837	8600	-0.081	3612.851	978715.695	-125.228	135.852	-49.260	-38.637	440.219
547801.2	7422043.0	2041	7800	-0.069	3612.357	978715.201	-125.603	136.629	-49.542	-38.516	442.739
547994.5	7422036.5	2041	8000	-0.070	3612.359	978715.203	-125.604	136.493	-49.493	-38.604	442.299
548185.9	7422031.8	2041	8200	-0.071	3612.494	978715.338	-125.472	136.286	-49.418	-38.604	441.626
548401.1	7422042.1	2041	8400	-0.073	3612.774	978715.618	-125.185	136.184	-49.381	-38.382	441.295
548603.9	7422038.2	2041	8600	-0.074	3612.555	978715.399	-125.406	135.944	-49.294	-38.756	440.519
548798.9	7422041.2	2041	8800	-0.075	3612.811	978715.655	-125.148	135.724	-49.214	-38.638	439.804
547200.0	7422242.9	2245	7200	-0.066	3611.411	978714.255	-126.431	137.755	-49.951	-38.627	446.387
547407.1	7422246.4	2245	7400	-0.064	3611.782	978714.626	-126.058	137.221	-49.757	-38.594	444.655
547598.8	7422237.5	2245	7600	-0.063	3611.993	978714.837	-125.852	136.999	-49.676	-38.529	443.936
547798.6	7422248.2	2245	7800	-0.062	3612.262	978715.106	-125.576	136.716	-49.574	-38.434	443.021
547995.0	7422249.0	2245	8000	-0.061	3612.408	978715.252	-125.429	136.566	-49.519	-38.383	442.534
548196.1	7422236.5	2245	8200	-0.060	3613.126	978715.970	-124.718	136.265	-49.410	-37.863	441.560
548407.6	7422244.7	2245	8400	-0.059	3612.646	978715.490	-125.193	136.118	-49.357	-38.432	441.082
548605.1	7422260.2	2245	8600	-0.055	3612.810	978715.654	-125.019	135.968	-49.302	-38.354	440.595
548798.8	7422242.2	2245	8800	-0.054	3612.901	978715.745	-124.939	135.769	-49.230	-38.400	439.952
548999.3	7422238.8	2245	9000	-0.052	3613.056	978715.900	-124.785	135.581	-49.162	-38.367	439.341
547197.8	7422444.3	2449	7200	-0.041	3611.508	978714.352	-126.215	137.644	-49.910	-38.481	446.027
547397.6	7422448.1	2449	7400	-0.042	3611.772	978714.616	-125.948	137.254	-49.769	-38.463	444.763
547596.5	7422454.0	2449	7600	-0.043	3612.158	978715.002	-125.559	136.776	-49.596	-38.378	443.214
547798.3	7422448.2	2449	7800	-0.044	3612.420	978715.264	-125.300	136.643	-49.548	-38.204	442.785
548007.0	7422447.2	2449	8000	-0.045	3612.544	978715.388	-125.176	136.644	-49.548	-38.080	442.786
548195.1	7422450.3	2449	8200	-0.046	3612.397	978715.241	-125.321	136.364	-49.446	-38.403	441.881
548401.7	7422445.2	2449	8400	-0.047	3612.856	978715.700	-124.864	136.161	-49.373	-38.076	441.223
548600.7	7422441.7	2449	8600	-0.048	3612.929	978715.773	-124.793	135.956	-49.298	-38.135	440.558
548792.0	7422456.2	2449	8800	-0.049	3613.166	978716.010	-124.547	135.758	-49.227	-38.015	439.917
548994.7	7422464.4	2449	9000	-0.050	3613.283	978716.127	-124.425	135.536	-49.146	-38.035	439.195
547198.1	7422656.2	2653	7200	-0.039	3611.813	978714.657	-125.785	137.301	-49.786	-38.269	444.916
547395.6	7422656.6	2653	7400	-0.038	3612.126	978714.970	-125.471	136.967	-49.665	-38.168	443.835

547592.6	7422653.2	2653	7600	-0.037	3612.437	978715.281	-125.162	136.783	-49.598	-37.977	443.238
547793.8	7422655.4	2653	7800	-0.036	3612.518	978715.362	-125.079	136.613	-49.536	-38.002	442.686
547996.2	7422652.4	2653	8000	-0.034	3612.185	978715.029	-125.413	136.521	-49.503	-38.396	442.388
548192.6	7422655.1	2653	8200	-0.033	3612.486	978715.330	-125.110	136.336	-49.436	-38.210	441.789
548403.2	7422660.7	2653	8400	-0.032	3613.010	978715.854	-124.583	135.988	-49.310	-37.904	440.662
548608.8	7422647.6	2653	8600	-0.031	3613.092	978715.936	-124.508	135.865	-49.265	-37.908	440.263
548808.7	7422649.8	2653	8800	-0.030	3613.126	978715.970	-124.472	135.733	-49.217	-37.957	439.834
548996.0	7422635.3	2653	9000	-0.029	3613.191	978716.035	-124.415	135.525	-49.142	-38.032	439.161
549201.9	7422654.5	2653	9200	-0.027	3613.276	978716.120	-124.319	135.384	-49.091	-38.025	438.704
547196.1	7422855.1	2857	7200	-0.010	3611.959	978714.803	-125.521	137.229	-49.760	-38.052	444.681
547401.6	7422861.2	2857	7400	-0.012	3612.041	978714.885	-125.435	137.076	-49.704	-38.063	444.186
547609.1	7422860.8	2857	7600	-0.013	3612.093	978714.937	-125.383	136.891	-49.637	-38.129	443.588
547806.7	7422855.6	2857	7800	-0.014	3611.955	978714.799	-125.523	136.754	-49.588	-38.357	443.144
548007.0	7422855.4	2857	8000	-0.015	3612.567	978715.411	-124.911	136.139	-49.365	-38.137	441.150
548204.5	7422856.3	2857	8200	-0.017	3612.568	978715.412	-124.909	136.118	-49.357	-38.148	441.083
548403.0	7422854.9	2857	8400	-0.021	3612.951	978715.795	-124.527	135.912	-49.282	-37.897	440.416
548604.6	7422862.8	2857	8600	-0.022	3612.945	978715.789	-124.528	135.768	-49.230	-37.990	439.947
548809.5	7422856.5	2857	8800	-0.023	3612.980	978715.824	-124.496	135.656	-49.190	-38.029	439.586
548993.4	7422853.8	2857	9000	-0.024	3613.028	978715.872	-124.449	135.574	-49.160	-38.035	439.318
549200.1	7422854.4	2857	9200	-0.026	3613.253	978716.097	-124.223	135.237	-49.038	-38.024	438.228
547406.2	7423265.0	3265	7400	-0.097	3611.927	978714.771	-125.310	137.016	-49.683	-37.976	443.993