



australian ilmenite resources pty ltd

8/4 Shepherd Street, Darwin, N.T.
0800, Australia

GPO Box 947, Darwin, Northern
Territory, 0801

T : +61 8 8941 3213
F : +61 8 8941 3498
www.ilmenite.com.au

19nd May 2011

The Director
Geoscience Division
Department of Resources
GPO Box 3000
Darwin NT 0801

**RE: ADDITIONAL INFORMATION AIR FINAL REPORT FOR EL 23048
FINAL YEAR 2009-2010**

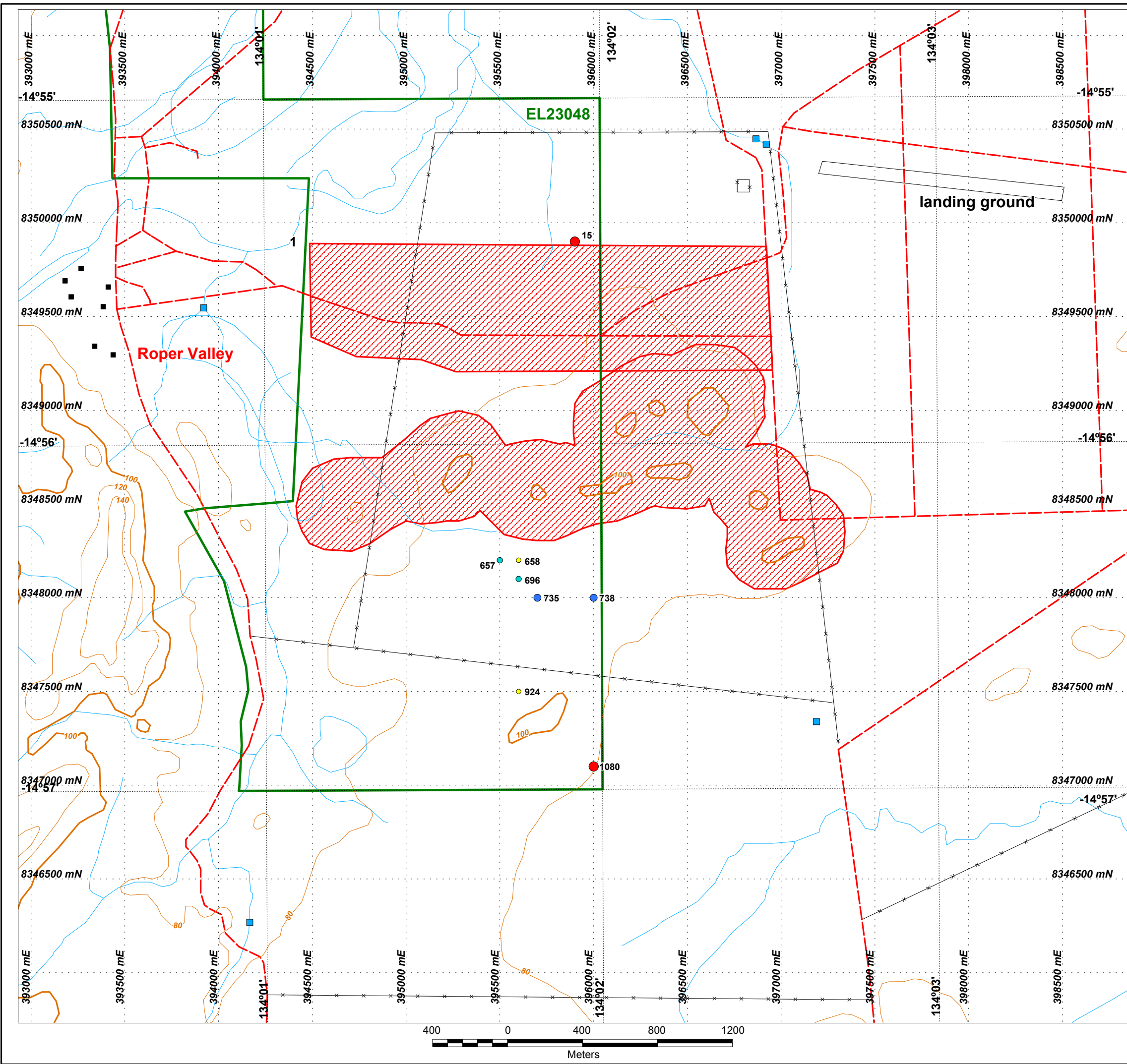
An Auger Drilling Programme was conducted commencing in November 2010. The programme was designed to identify the concentration of TiO₂ which will indicate an ideal location for commencement of mining. This auger programme covering part of EL 24655 and EL 23048 achieved that objective (refer to attached map).

It will be our intention under the new SEL 27422 (covering former EL23048 and EL24655) to undertake a further auger drilling programme to extend our knowledge base of the further extension of the Ilmenite deposit.

Enclosed is an adjusted Expenditure Report for EL 23048, an Auger Drill Hole Location Map and an XL Spreadsheet.

Yours faithfully

Geoffrey Fanning
Director
Australian Ilmenite Resources Pty Ltd



- Granted Exploration Licence
- Existing Road
- Fence
- Creek or River
- Buildings
- Dam or Tank
- 20 metre contours
- 100 metre contours
- Aboriginal Significance

TIO 2 SAMPLE RESULTS

- >13%-15%
- >11%-13%
- >9%-11%
- >7%-9%
- >5%-7%
- >2%-11%

METHOD & REHABILITATION

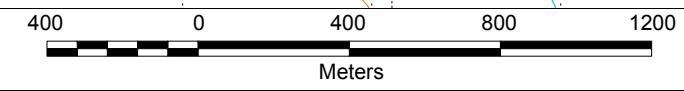
1 kg sample from each 150mm Auger Drill Sample
3 samples taken from 3 sections of each core.

Each hole will take 10 minutes to rehabilitate by pushing all residue from auger drill and surrounding area and backfilling hole.

Each drill hole immediately rehabilitated upon completion of sample.

Securities worked out on 6 holes per hour.
215 hrs @ \$25 per hour = \$5,375.

Use of existing tracks and along fence lines with drill mounted bob cat. If no access tracks across country. Not all auger holes marked on map will be sampled (not on high ground or drainage channels).



AUSTRALIAN ILMENITE RESOURCES PTY LIMITED		
Roper Project EL23048 Auger Drill Hole Locations		
Drawn: CAPRICORN	Datum: GDA94	Ref: SD 5310
Scale: 1:20,000	Date: MAY 2011	Plan No: AUS046

Australian Ilmenite Resources Pty Ltd
EL23048 SAMPLE RESULTS
 April 2011

Sample No	Easting	Northing	Latitude	Longitude	Al2O3	Al	BaO	Ba	CaO	Ca	CuO	Cu	Fe2O3	Fe	K2O	K	MgO	Mg	MnO	Mn	P2O5	P	PbO	Pb	SiO2	Si	SO3	S	TiO2	Ti	V	V2O5	ZnO	Zn	LOI	Total	Moist			
					0.01	0.005	0.01	0.01	0.01	0.01	0.01	0.01	0.01	0.01	0.01	0.01	0.01	0.01	0.01	0.01	0.01	0.01	0.01	0.01	0.01	0.01	0.005	0.01	0.01	0.01	0.01	0.01	0.01	0.01	0.01	0.01	0.01	0		
					%	%	%	%	%	%	%	%	%	%	%	%	%	%	%	%	%	%	%	%	%	%	%	%	%	%	%	%	%	%	%	%	%	%	%	
15	395900	8349900	-14.9236	134.0321	11.8	6.26	0.05	0.04	0.23	0.17	0.04	0.04	25.9	18.1	0.96	0.8	0.59	0.36	0.32	0.24	0.05	0.02	0.04	0.04	41	19.2	<0.01	<0.01	14.9	8.95	0.18	0.1	0.03	0.03	101	4.5	1.89			
657	395500	8348200	-14.9389	134.0283	17.5	9.24	0.03	0.03	0.17	0.12	0.04	0.03	20.6	14.4	0.76	0.63	0.41	0.25	0.16	0.13	0.06	0.03	0.05	0.04	48.7	22.8	0.01	<0.01	5.02	3.01	0.1	0.06	0.03	0.02	101	7.38	2.07			
658	395600	8348200	-14.9389	134.0292	17.7	9.37	0.02	0.02	0.15	0.11	0.05	0.04	18.6	13	0.59	0.49	0.29	0.18	0.11	0.08	0.05	0.02	0.05	0.04	51.7	24.1	<0.01	<0.01	3.36	2.02	0.08	0.05	0.02	0.02	100	7.78	1.64			
696	395600	8348100	-14.9398	134.0292	17.3	9.17	0.01	0.01	0.09	0.06	0.04	0.03	21.6	15.1	0.54	0.45	0.31	0.19	0.1	0.08	0.05	0.02	46.9	21.9	0.05	0.04	<0.01	<0.01	5.06	3.04	0.1	0.06	0.02	0.02	7.88	99.9	1.89			
735	395700	8348000	-14.9407	134.0301	14.1	7.48	0.04	0.04	0.17	0.12	0.04	0.03	19.2	13.4	0.72	0.59	0.42	0.25	0.22	0.17	0.04	0.02	0.05	0.05	51.4	24	<0.01	<0.01	7.13	4.27	0.11	0.06	0.03	0.02	100	6.69	1.98			
738	396000	8348000	-14.9408	134.0329	13.8	7.32	0.03	0.03	0.13	0.1	0.04	0.04	18.2	12.7	0.57	0.47	0.3	0.18	0.32	0.25	0.05	0.02	0.05	0.05	54.6	25.5	<0.01	<0.01	7.04	4.22	0.1	0.06	0.03	0.02	101	5.55	1.59			
924	395600	8347500	-14.9453	134.0292	20.6	10.9	0.03	0.03	0.13	0.09	0.04	0.03	28.4	19.8	0.46	0.38	0.31	0.19	0.28	0.21	0.09	0.04	0.05	0.04	37.2	17.4	<0.01	<0.01	4.36	2.62	0.13	0.07	0.02	0.02	101	8.76	2.34			
1080	396000	8347100	-14.9489	134.0329	10	5.3	0.03	0.03	0.1	0.07	0.04	0.03	22.1	15.5	0.58	0.48	0.33	0.2	0.18	0.14	0.03	0.01	0.05	0.04	50.6	23.7	<0.01	<0.01	13.5	8.09	0.09	0.15	0.03	0.03	3.34	100.9	1.34			