



Titleholder	Minemakers Australia Pty Ltd
Operator	Minemakers Australia Pty Ltd
Tenement Agent	McColl Exploration and Mining Title Services Pty Ltd
Tenement	EL26583
Project name	Wonarah Gap
Report title	Annual and Final Report for Period 27 th May 2009 to 6 th May 2010 – EL26583 Wonarah Gap
Personal authors	Fulton R.L. and R. Varley
Corporate author	Minemakers Australia Pty Ltd
Target commodity	Phosphate
Date of report	19 August, 2010
Datum/Zone	GDA94, Zone 53
250,000 mapsheet	Alroy and Frew River
100,000 mapsheet	Wonarah and Joildung
Contact details	Fulton, R.L. Minemakers Australia Pty Ltd PO Box 1704 West Perth WA 6872 Fax: (08) 9264 7099 Ph: (08) 9264 7000
Email for technical details	anniep@minemakers.com.au
Email for expenditure	russellf@minemakers.com.au

Annual and Final Report for EL26583 – Wonarah Gap

WONARAH PHOSPHATE PROJECT

ANNUAL REPORT TO 6th May 2010

**Russell Fulton
Ray Varley
Minemakers Australia
Level 2, 34 Colin St
West Perth WA 6005**

Please Contact Russell Fulton Concerning Report Queries



ABSTRACT

This EL is a narrow (average 150m wide) sliver of land created as a result of the Datum shift from AGD84 to GDA94 and which was excluded from the surrounding SEL 26452. Exploration expenditure has been apportioned from SEL 26452. This licence was surrendered on 6 May 2010 as the area falls wholly within Mineral Lease 27244 which covers the Wonarah deposit.

CONTENTS

1. SUMMARY.....	5
-----------------	---

FIGURES

Figure 1	Location map
Figure 2	Wonarah Phosphate Project tenements
Figure 3	Exploration Index Map

APPENDICES

Appendix 1	Drill collars
Appendix 2	Down hole lithology
Appendix 3	Down hole geochemistry
Appendix 4	Down hole surveys
Appendix 5	Lithology units
Appendix 6	Lithology codes
Appendix 7	Magnetic susceptibilities
Appendix 8	Radeye

1. SUMMARY

This EL is a narrow (average 150m wide) sliver of land created as a result of the Datum shift from AGD84 to GDA94 and which was excluded from the surrounding SEL 26452. Exploration expenditure has been apportioned from SEL 26452. This licence was surrendered on 6 May 2010 as the area falls wholly within Mineral Lease 27244 which covers the Wonarah deposit.

Although one line of 51 RC holes and 2 diamond-cored holes were drilled on EL26583 the results and interpretation have been reported in the combined report for the Wonarah Phosphate Project submitted to the department in February 2010 as they would make no sense if reported in isolation and out of context.

Notwithstanding this, all data acquired pertaining to EL26583 is again submitted in digital format for this final report.

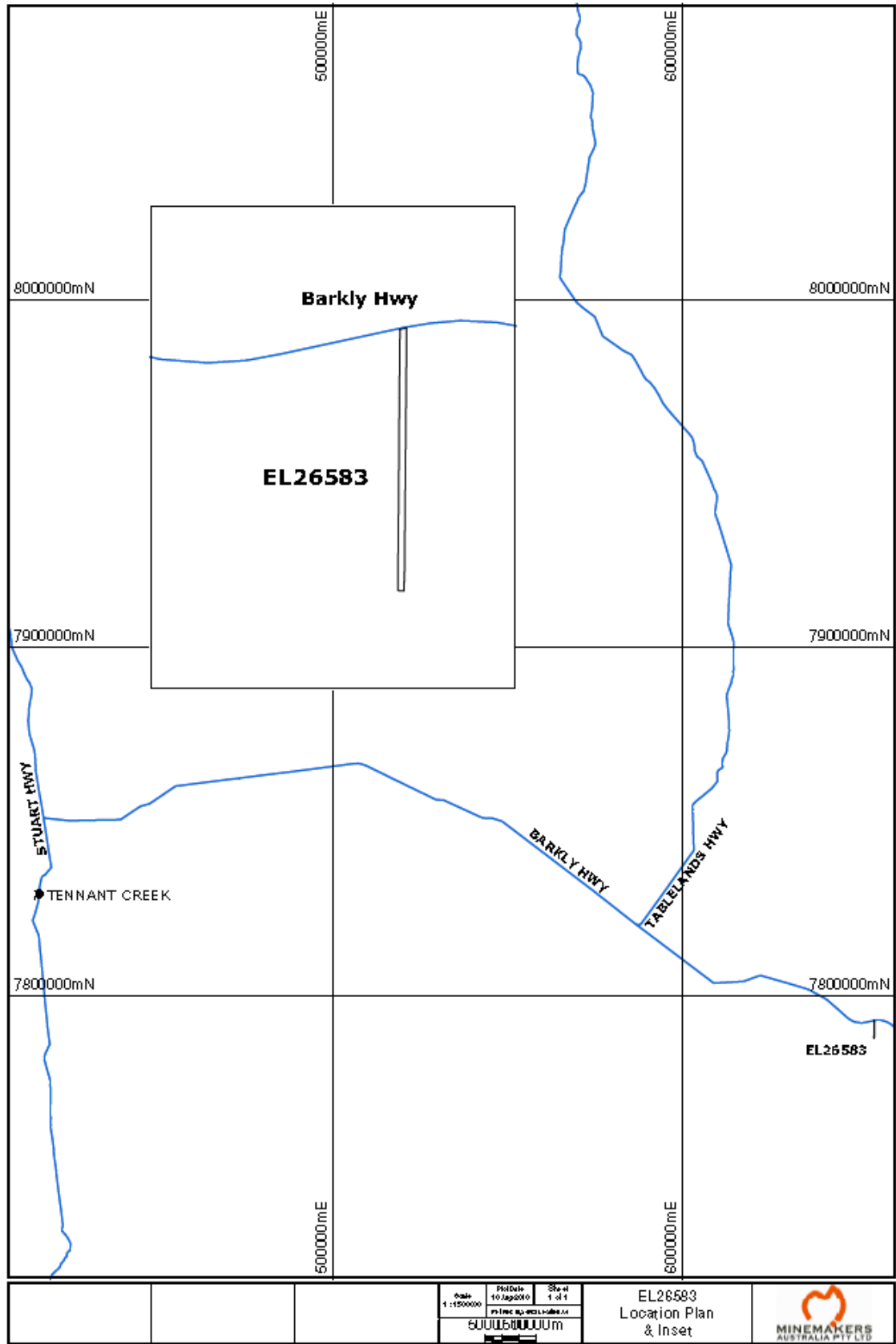


Figure 1. Location Map

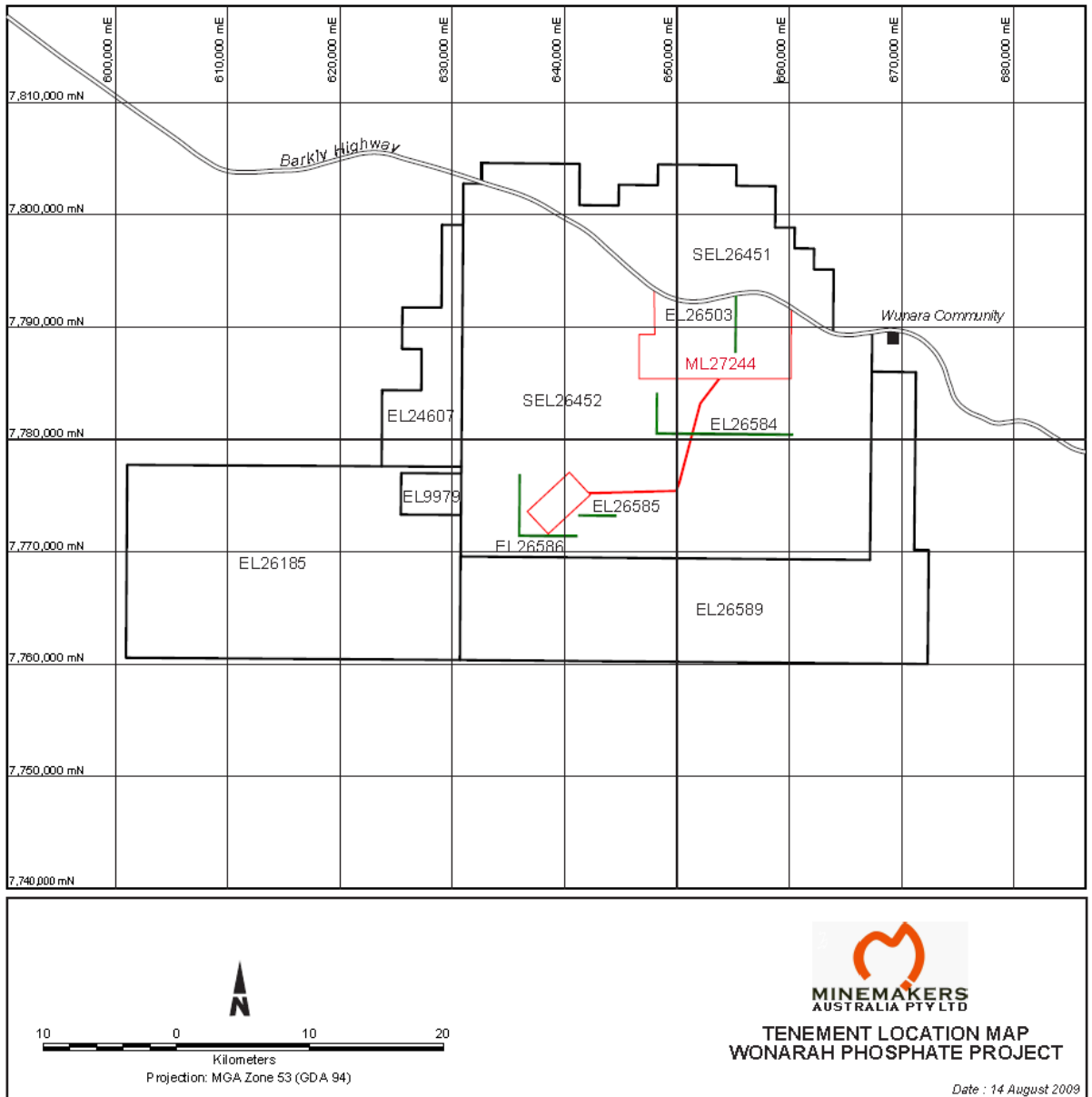


Figure 2. Wonarah Phosphate Project tenements

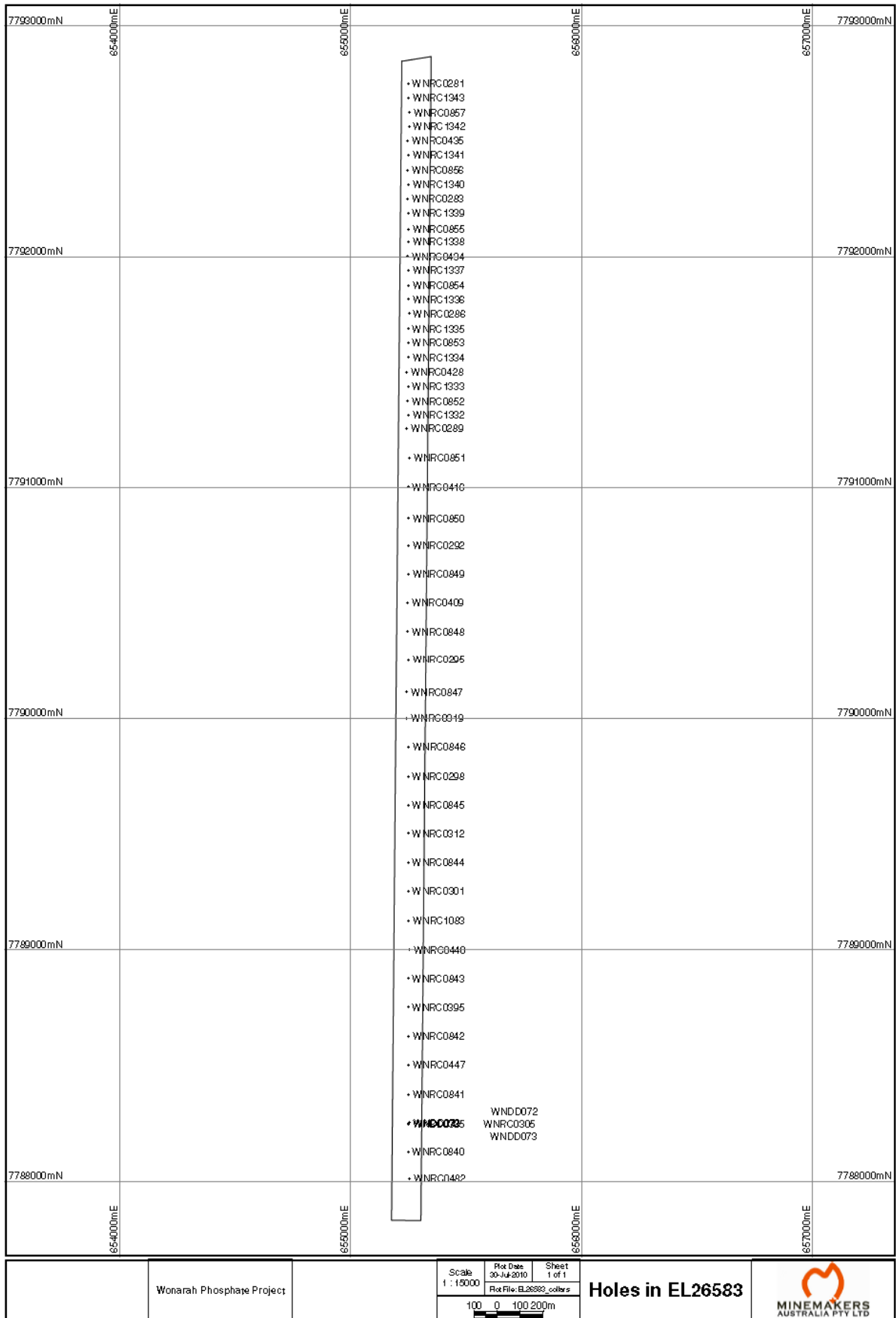


Figure 3. Exploration Index Map