



Weatherford

CASING COLLAR LOCATOR LOG

**NEW CROWN 1
- SLIMLINE UNIT -**

COMPANY TRI-STAR COAL OPERATIONS LLC
WELL NEW CROWN 1
FIELD PEDIRKA
PROVINCE/COUNTY NORTHERN TERRITORY
COUNTRY/STATE AUSTRALIA
LOCATION EP134

Latitude 25° 35' 1.5"
Longitude 135° 13' 39.8"
Other Services DD6 DUM

Permanent Datum 0 METRES, Elevation 201 metres
Log Measured From KB
Drilling Measured From KB: 960.4M
Elevations: KB 2.75 DF GL 201.00

Date	08-MAR-2014	
Run Number	ONE	
Service Order		
Depth Driller	960.44	metres
Depth Logger	542.95	metres
First Reading	542.85	metres
Last Reading	410.00	metres
Casing Driller	535.00	metres
Casing Logger	535.00	metres
Bit Size	167.100	mm
Hole Fluid Type	AIR/WATER	
Density / Viscosity		
PH / Fluid Loss		
Sample Source		
Rm @ Measured Temp		
Rmf @ Measured Temp		
Rmc @ Measured Temp		
Source Rmf / Rmc		
Rm @ BHT		
Time Since Circulation		
Max Recorded Temp		
Equipment / Base	368	EMD
Recorded By	CMC	
Witnessed By	J.MORGAN G.ANDERSON	

REMARKS

CALIBRATION DATES FOR SERVICES RUN:

DD6 700 - 23/02/2014 SOURCE ID: 0219/07 LOGGING SPEED 6-7 M/MIN
 GC2 216 - 23/02/2014 LOGGING SPEED 8 M/MIN

BOREHOLE INFORMATION:

WATER LEVEL: APPROX.: 60M
 ZERO MEASURED FROM KELLY BUSHING (2.75M ABOVE G.L)

REMARKS:

LOGGED THROUGH RIG

DENSITY REQUESTED TO BE LOGGED OPEN HOLE ONLY

GC2 REQUESTED TO BE RUN TO LOCATE 10 COLLARS FROM BOTTOM OF CASING ONLY

BOREHOLE RECORD

Last Edited: 08-MAR-2014 11:40

Bit Size millimetres	Depth From metres	Depth To metres
-------------------------	----------------------	--------------------

203.200
167.100

0.00
535.00

535.00
1000.00

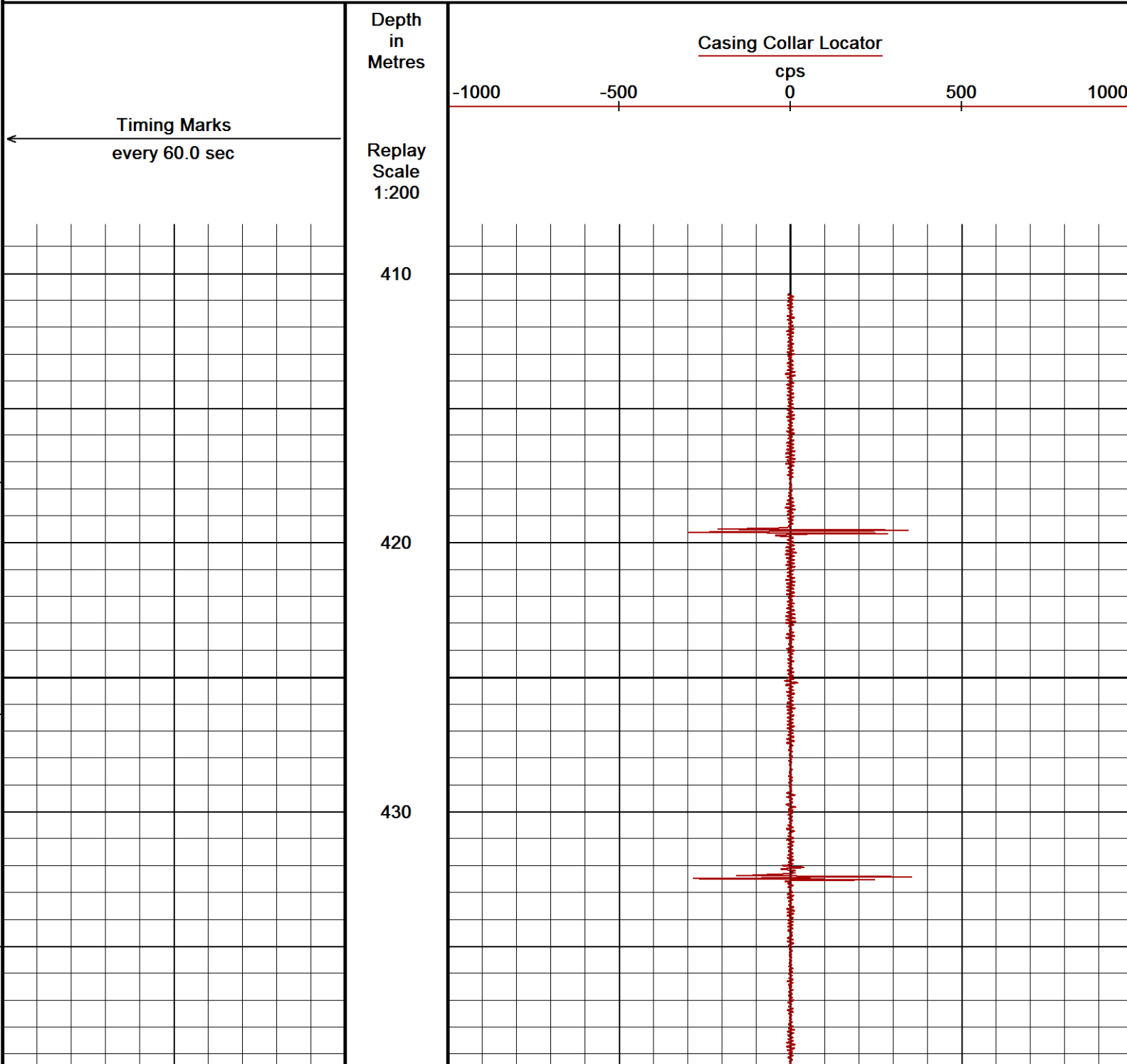
CASING RECORD

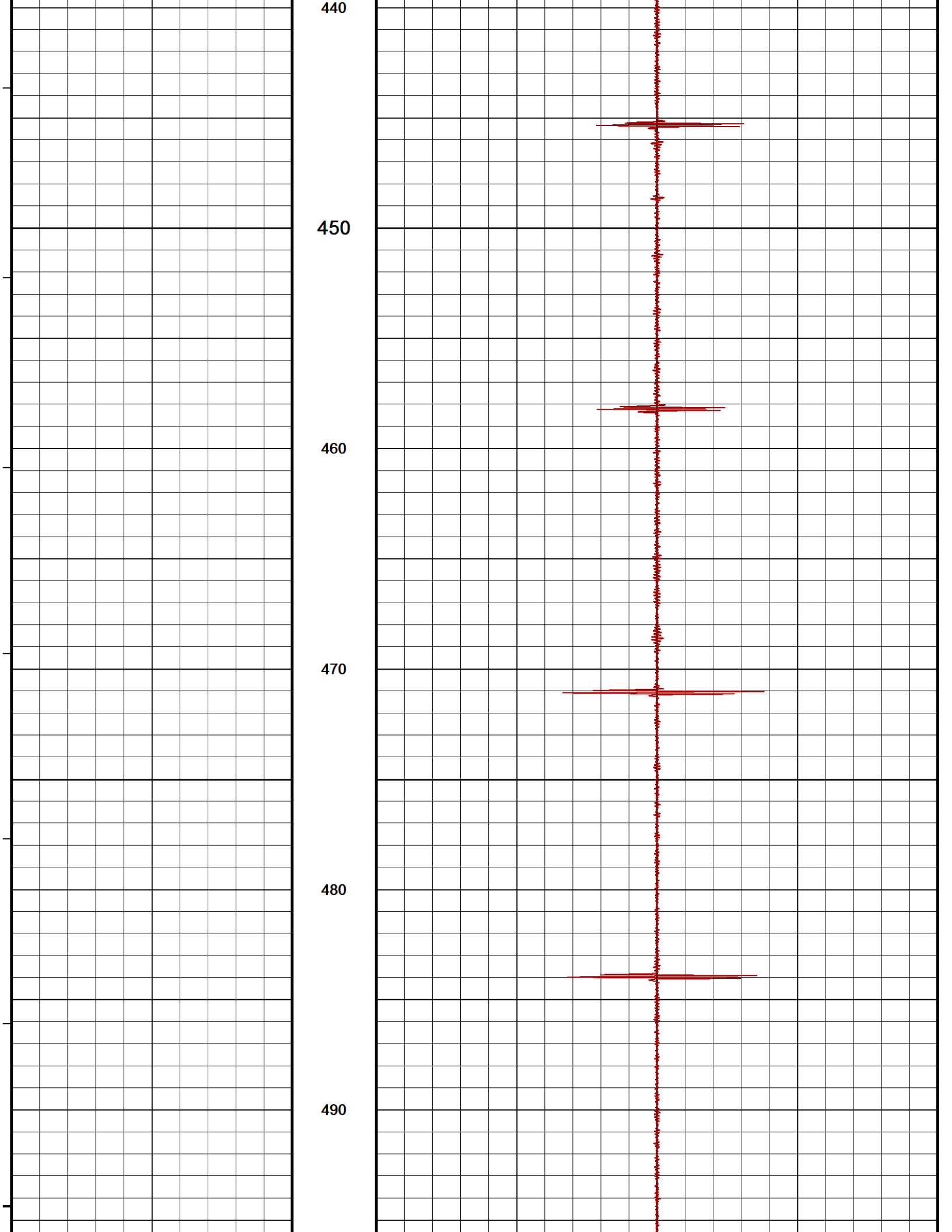
Type	Size millimetres	Depth From metres	Shoe Depth metres	Weight Kg/metre
STEEL	177.800	0.00	535.00	0.00

All interpretations are opinions based on inferences from electrical or other measurements and we cannot, and do not, guarantee the accuracy or correctness of any interpretations, and we shall not, except in the case of gross or wilful negligence on our part, be liable or responsible for any loss, costs, damages or expenses incurred or sustained by anyone resulting from any interpretation made by any of our officers, agents or employees. These interpretations are also subject to our general terms and conditions in our price schedule.

NEWCROWN1

Depth Based Data - Maximum Sampling Increment 1.0cm
Plotted on 08-MAR-2014 12:12
Filename: C:\LOGS\CMC\27022014\TRISTAR\PEDIRKA\NEWCROW...\NEWCROWN1_GC2_001.dta
Recorded on 08-MAR-2014 11:23
System Versions: Logged with 13.05.9583 Plotted with 13.05.9583





500

510

520

530

540

546

Depth
in
Metres

Casing Collar Locator

cps

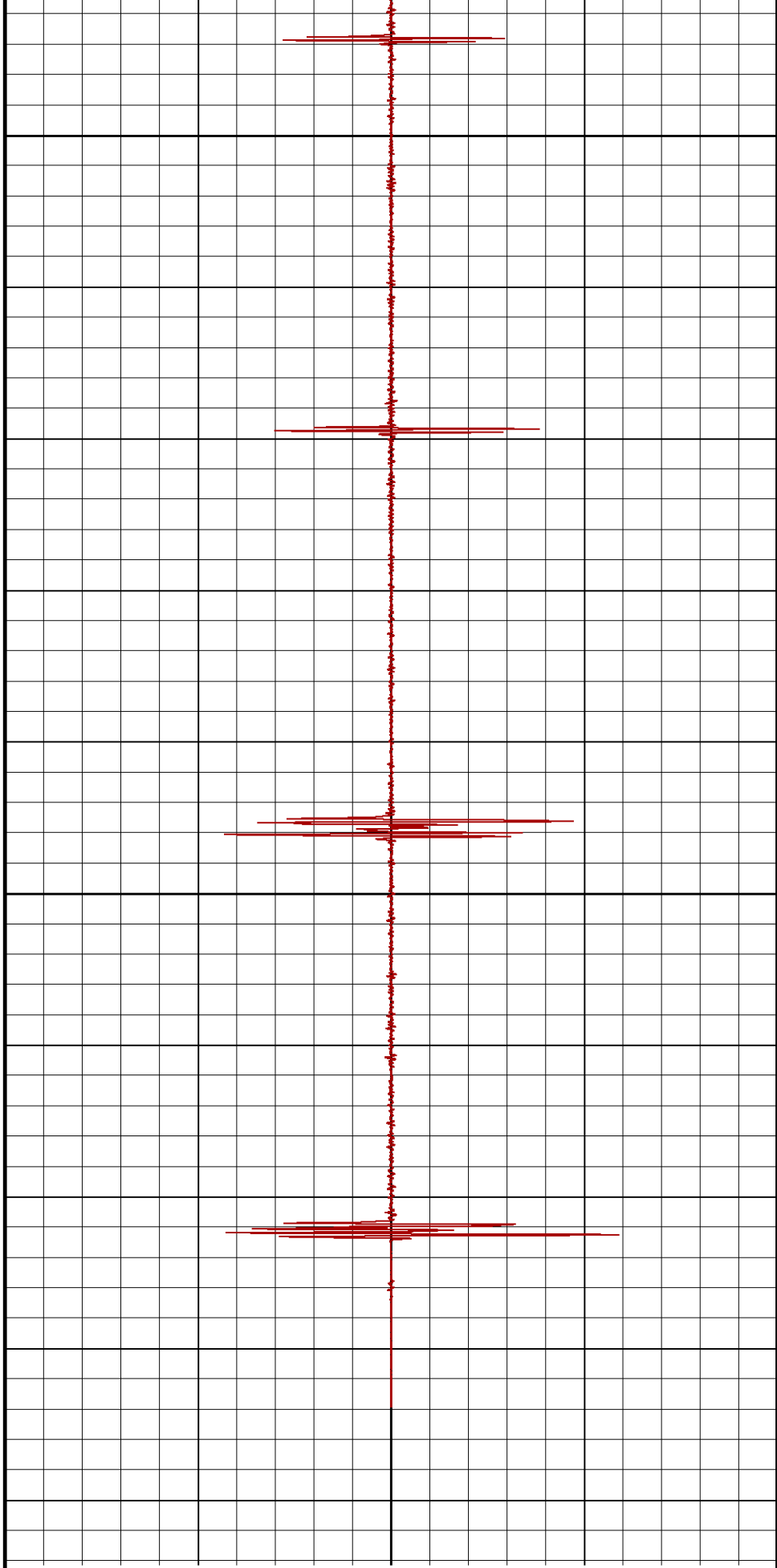
-1000

-500

0

500

1000



Timing Marks

← every 60.0 sec

Replay
Scale
1:200

Depth Based Data - Maximum Sampling Increment 1.0cm

Plotted on 08-MAR-2014 12:12

Filename: C:\LOGS\CMC\27022014\TRISTAR\PEDIRKA\NEWCROWN1\NEWCROWN1_GC2_001.dta

Recorded on 08-MAR-2014 11:23

System Versions: Logged with 13.05.9583 Plotted with 13.05.9583



NEWCROWN1



BEFORE SURVEY CALIBRATION

C:\LOGS\CMC\27022014\TRISTAR\PEDIRKA\NEWCROWN1\NEWCROWN1_GC2_001.dta

General Constants All 000

Last Edited on 08-MAR-2014,10:53

General Parameters

Mud Resistivity	3.210	ohm-metres
Mud Resistivity Temperature	20.000	degrees C
Water Level	0.000	metres
Borehole Fluid Processing	Wet Hole	

Hole/Annular Volume and Differential Caliper Parameters

HVOL Method	Single Caliper	
HVOL Caliper 1	None	
HVOL Caliper 2	N/A	
Annular Volume Diameter	167.100	mm
Caliper for Differential Caliper	3-Arm Caliper CO1-GC2	

Rwa Parameters

Porosity used	N/A
Resistivity used	N/A
RWA Constant A	N/A
RWA Constant M	N/A
SW/APOR Tool Source	

COMPANY

TRI-STAR COAL OPERATIONS LLC

WELL

NEW CROWN 1

FIELD

PEDIRKA

PROVINCE/COUNTY

NORTHERN TERRITORY

COUNTRY/STATE

AUSTRALIA

Elevation Kelly Bushing	2.75	metres	First Reading	542.85	metres
Elevation Drill Floor		metres	Depth Driller	960.44	metres
Elevation Ground Level	201.00	metres	Depth Logger	542.95	metres



CASING COLLAR LOCATOR LOG

NEW CROWN 1

- SLIMLINE UNIT -

Weatherford[®]