



**MCN 723 MOUNT WELLS NT
ANNUAL REPORT FOR THE PERIOD OF REVIEW AND
EXPLORATION ENDING 17TH OCTOBER 2009**

Report prepared for Outback Metals Limited

By

William J Fraser

FAusIMM (CP) AMAAPG

WJ Fraser & Associates Pty Ltd

PO Box 914

Malanda Qld 4885

wfr83002@bigpond.net.au

DISCLAIMER

While William J Fraser and WJ Fraser & Associates Pty Ltd have taken every care to ensure that information contained is correct and complete, no warranty is offered that it is.

The potential geological and geophysical situations, the opinions, interpretations and estimates contained in this report are speculative and high risk.

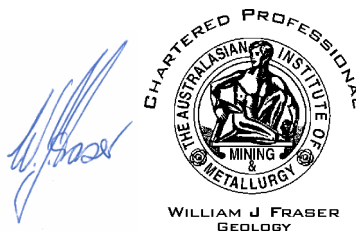
1:100 000 Geological Map Series

PINE CREEK 5270

MCKINLAY RIVER 5271

1:250 000 Geological Map Series

PINE CREEK SD5208



CONTENTS

1. EXECUTIVE SUMMARY
2. INTRODUCTION
3. GEOLOGY AND MINERALISATION
4. ONGOING SURFACE MAPPING, SAMPLING AND RESOURCE MODELLING
5. CONCLUSIONS AND RECOMMENDATIONS
6. REFERENCES

FIGURES

Fig 1. MCN 723 Mount Wells 1:250 000 Natmap Topography

Fig 2. MCN 723 Mount Wells Orthorectified Air Photo

1. **EXECUTIVE SUMMARY**

In late 2008 Outback Metals Limited carried out a drilling programme on the Mount Wells titles and this work was reported on in March 2009, including all the work on MCN 723.

During 2009, re-assaying of drill samples, 3D resource modelling, surface geological mapping and rock chip sampling were carried out over most of the Mount Wells titles. It is intended to fully report on this work at the end of March 2010.

It is recommended that the Annual Reporting anniversary date for MCN 723 be adjusted to align with the other titles.

2. INTRODUCTION

MCN 723 of size 20ha was first granted on 18th October 1983 and expires in 2018. The present title holder is Softwood Plantations Pty Ltd. Preparatory to the ASX listing Outback Metals Limited (OUM) made an outright purchase of Softwood Plantations.

MCN 723 is located about 150km south east of Darwin and is one of a group of eleven MLs and one MC clustered over the Mount Wells Tin Deposit (Figs 1 to 2 refer).

In late 2008 OUM carried out a rotary percussion drilling programme for which the preliminary results were reported in March 2009 (McIlwraith, 2009).

For some reason the anniversary reporting date for MCN 723 is out of phase with the reporting date for the other MC and ML titles. Notwithstanding the drilling results for MCN 723 were previously reported by McIlwraith (*ibid*).

3. GEOLOGY AND MINERALISATION

Details of the geology and mineralisation at Mount Wells are detailed in McIlwraith (*ibid*).

4. ONGOING SURFACE MAPPING, SAMPLING AND RESOURCE MODELLING

During 2009 the following work was carried out:

- Re-assaying and check assaying by Amdel of the 2008 drill samples
- Check assaying by ALS Chemex of samples previously assayed by Amdel
- Reinterpretation of all lode outlines using 3D modelling with Vulcan software
- Preliminary resource estimates using a 0.3% Sn cut-off
- Surface geological mapping and sampling of veins and lodes exposed on the access tracks excavated for the 2008 drilling programme

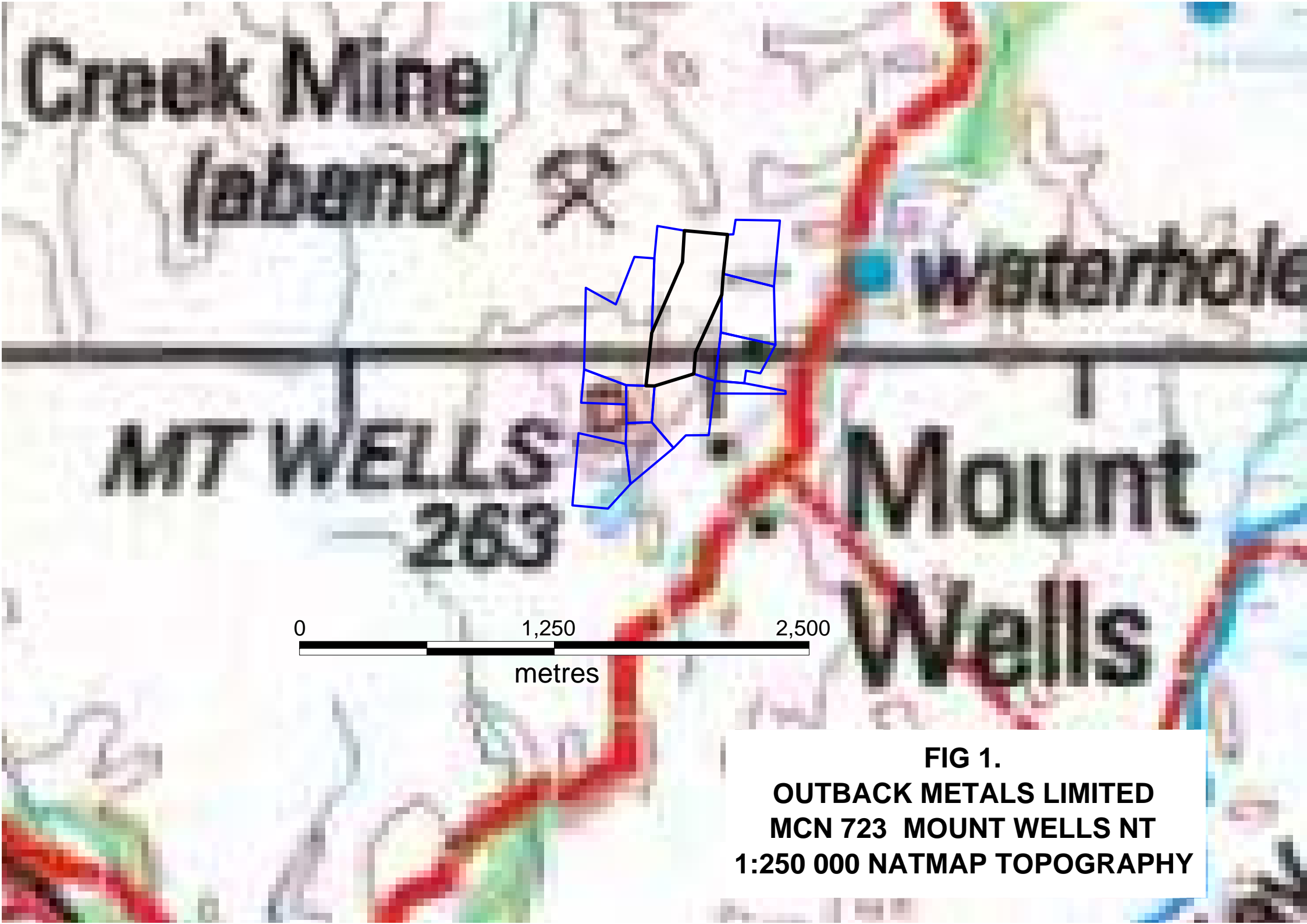
It is intended to fully report on the results of this work in March 2009.

5. CONCLUSIONS AND RECOMMENDATIONS

It is recommended that the Annual Reporting anniversary date for MCN 723 be adjusted to align with the other titles.

6. REFERENCES

McIlwraith J, 2009. Annual Report of titles MLN 164, 165, 196, 197, 198, 199, 200, 463, 465, 466 and 467 and MCN 723 and 2631, Mount Wells, Northern Territory. Report prepared by Outback Metals Limited for Softwood Plantations, 31st March 2009.



Creek Mine
(abandoned)

Waterhole

MT WELLS
263

Mount
Wells

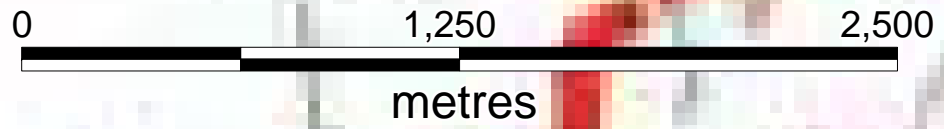


FIG 1.
OUTBACK METALS LIMITED
MCN 723 MOUNT WELLS NT
1:250 000 NATMAP TOPOGRAPHY

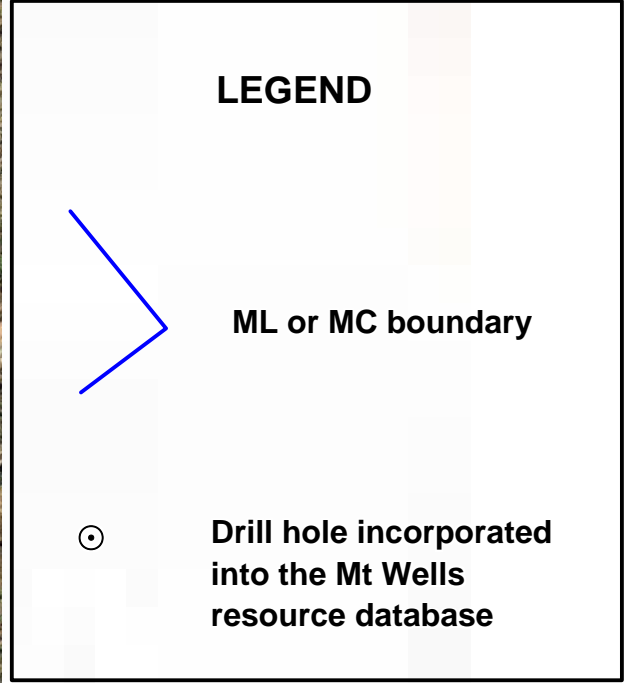
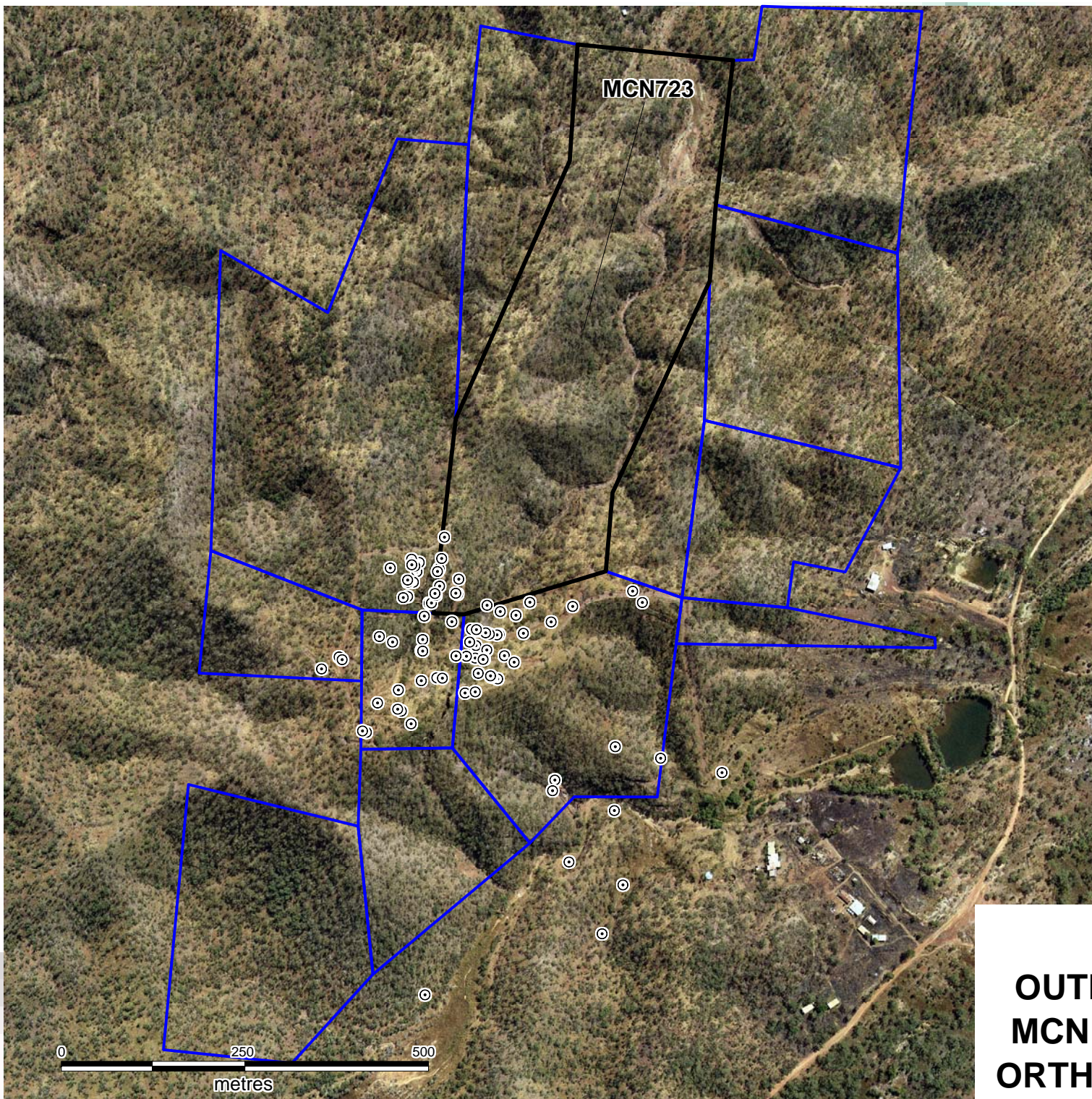


FIG 2.
OUTBACK METALS LIMITED
MCN 723 MOUNT WELLS NT
ORTHORECTIFIED AIR PHOTO