



## DEPARTMENT OF MINES AND ENERGY

### NIL REPORTING

<b>Tenure:</b>	EL24550 and EL27354
<b>Group Report ID:</b>	GR277
<b>Title:</b>	Annual Report
<b>Report Period:</b>	12/12/15 to 11/12/16
<b>Project Name:</b>	George Amangal Project
<b>Title Holder:</b>	Magnetite Mines Limited
<b>Title Operator:</b>	Magnetite Mines Limited
<b>Personal Author:</b>	Trevor Thomas
<b>Report Type:</b>	Annual
<b>250K Mapsheet/s:</b>	Pine Creek (SD52-08)
<b>100K Mapsheet/s:</b>	Batchelor (5171)
<b>Geological Province:</b>	Northern Mineral Field
<b>Stratigraphic Name:</b>	N/A
<b>Primary Commodity:</b>	Gold
<b>Other Commodities:</b>	Uranium
<b>Purpose for which Titles are held:</b>	Gold exploration and development
<b>Title History:</b>	Traditionally explored for uranium the EL24550 and EL27354 were granted to Magnetite Mines Ltd (then Royal Resources in 2005 and 2009 respectively. Exploration in the form of ground surveys identified gold mineralisation in 2013 at the 'Croc Pate Prospect' which is currently the focus for these tenements.
<b>Reason for Nil Activity:</b>	Due to financial constraints and softness in the mineral commodities markets, limited work has been completed on the George Amangal Project.

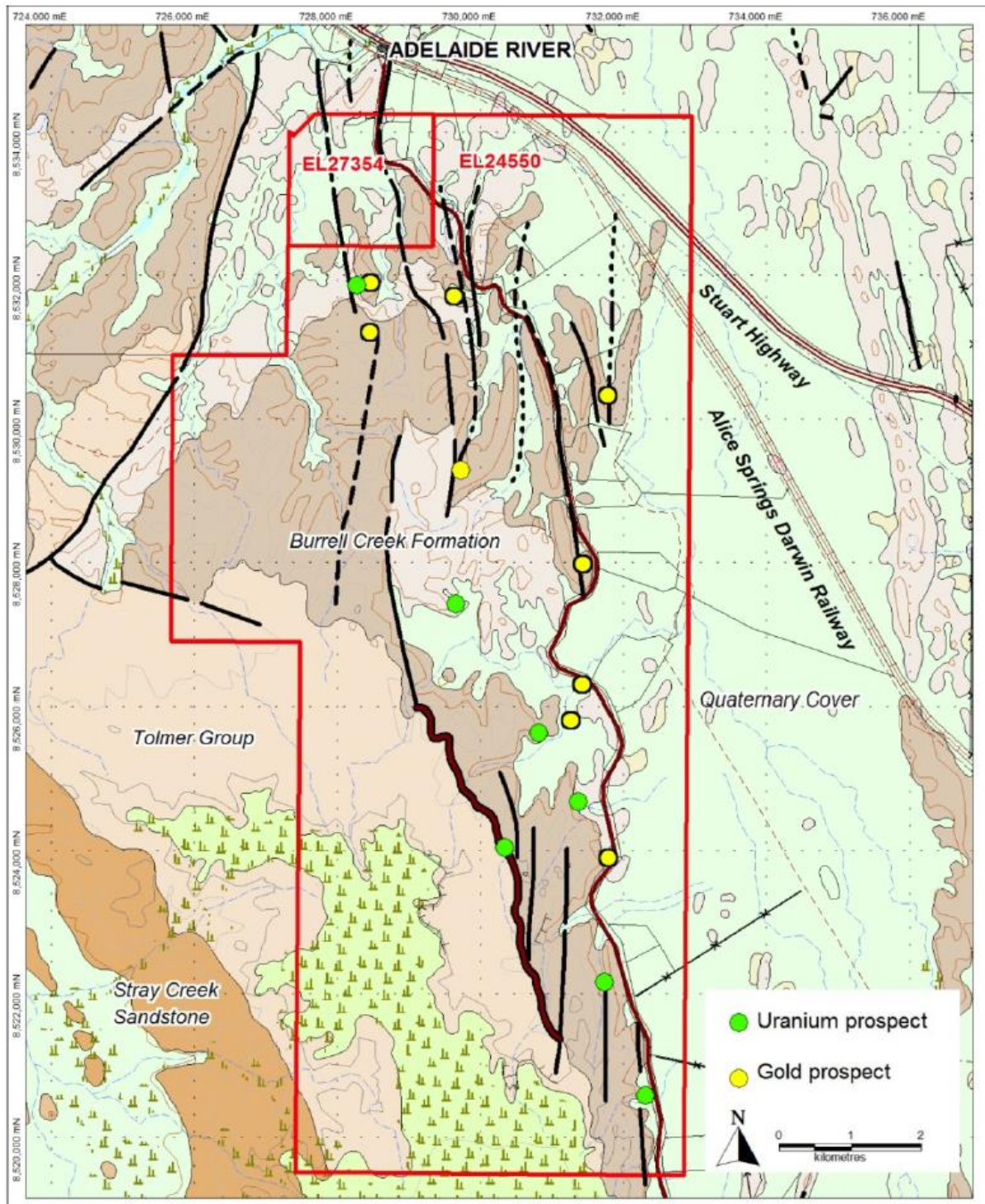
#### **When activity will be resumed and**

**what the nature of the activity will be:** Exploration is set to recommence in 2017 with a reconnaissance trip planned to assess gold prospectivity at EL27354 and further gold mineralisation at the Croc Pate prospect at EL24550 in early 2017.

#### **Copyright Statement:**

*Commercial in confidence. This document and its content are the copyright of Magnetite Mines Ltd. The document has been written for submission to the Northern Territory Department of Mines and Energy as part of the tenement reporting requirements as per the Mineral Titles Act (NT). I authorise the Minister to publish information in which the copyright subsists where "publish" has the meaning under Regulation 10 or 125 of the Copyright Act 1968 (Cth). This includes authorisation to copy and distribute the report and associated data.*

Location Map 1. The George Amangal Project EL24550 and EL27354



Location Map 2. Schematic Regional Location Map

