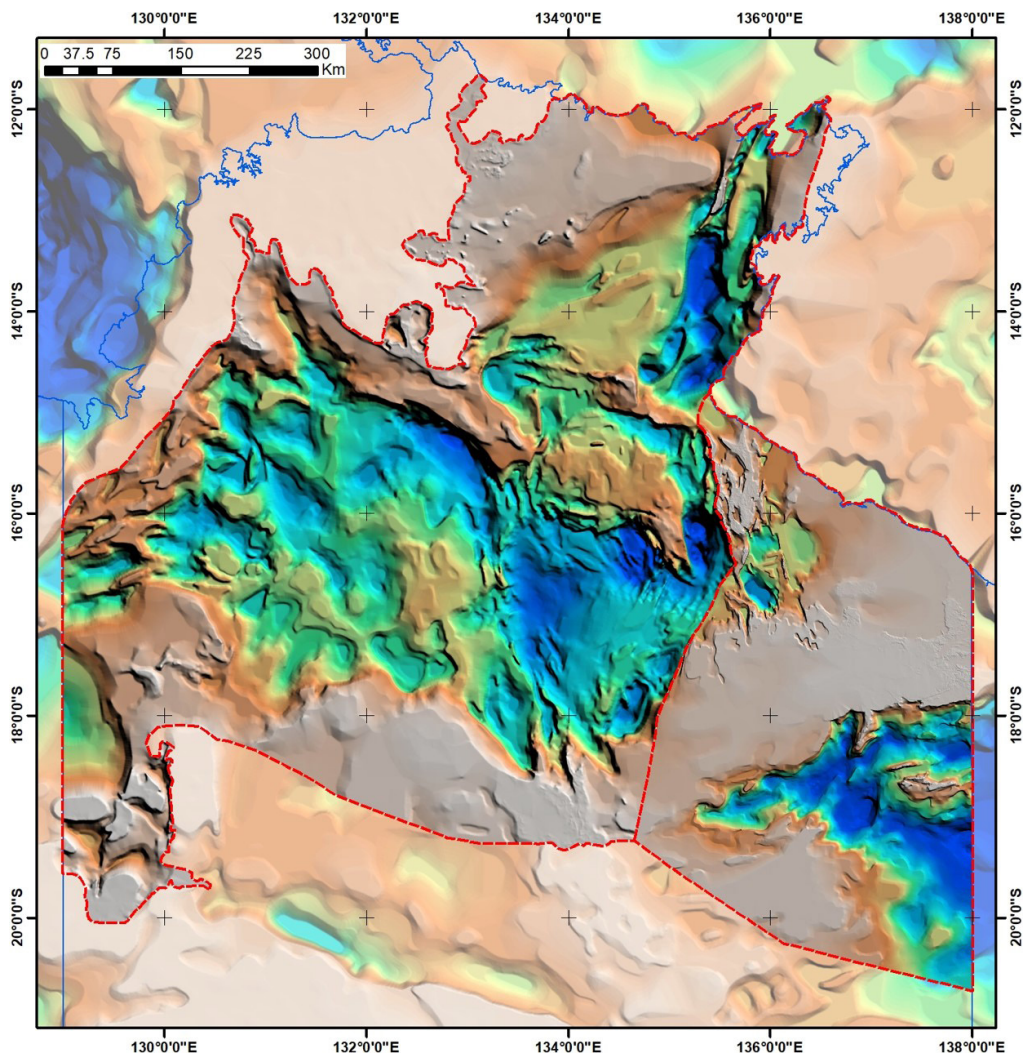


# SEEBASE® study and GIS for greater McArthur Basin: Supplementary Data

Frogtech Geoscience



Digital Information Package DIP 018

May 2018

DEPARTMENT OF PRIMARY INDUSTRY AND RESOURCES

MINISTER: Hon. Ken Vowles, MLA

CHIEF EXECUTIVE: Alister Trier

NORTHERN TERRITORY GEOLOGICAL SURVEY

EXECUTIVE DIRECTOR: Ian Scrimgeour

BIBLIOGRAPHIC REFERENCE: Frogtech Geoscience, 2018. SEEBASE® study and GIS for greater McArthur Basin: Supplementary Data. *Northern Territory Geological Survey, Digital Information Package* DIP 018.

(Digital Information Package / Northern Territory Geological Survey ISSN 1445-5358)

ATTACHMENT: Digital data; Appendix I & Appendix II: Geophysical Processing, Geophysical Enhancements; Appendix III: Magnetic Modelling.

Keywords: SEEBASE®, greater McArthur Basin, Redbank package, Wilton package, geoscientific information, geological interpretation

EDITOR: GC MacDonald.

Northern Territory Geological Survey  
3rd floor Paspalis Centrepoint Building  
Smith Street Mall, Darwin  
GPO Box 4550  
Darwin NT 0801, Australia

Arid Zone Research Institute  
South Stuart Highway, Alice Springs  
PO Box 8760  
Alice Springs NT 0871, Australia

For further information contact:  
Minerals and Energy InfoCentre  
Phone: +61 8 8999 6443  
Website: <http://www.minerals.nt.gov.au/ntgs>  
Email: [geoscience.info@nt.gov.au](mailto:geoscience.info@nt.gov.au)



© Northern Territory of Australia (Northern Territory Geological Survey) 2018

With the exception of the Northern Territory of Australia, CORE and FrogTech logos and where otherwise noted, all material in this publication is provided under a Creative Commons Attribution 4.0 International licence (<https://creativecommons.org/licenses/by/4.0/legalcode>).

You are free to re-use the work under the licence, on the condition that you attribute the Northern Territory of Australia (Northern Territory Geological Survey) and comply with the other licence terms

#### Disclaimer

While all care has been taken to ensure that information contained in this publication is true and correct at the time of publication, changes in circumstances after the time of publication may impact on the accuracy of its information. The Northern Territory of Australia and Frogtech Geoscience give no warranty or assurance, and makes no representation as to the accuracy of any information or advice contained in this publication, or that it is suitable for your intended use. You should not rely upon information in this publication for the purpose of making any serious business or investment decisions without obtaining independent and/or professional advice in relation to your particular situation. The Northern Territory of Australia and Frogtech Geoscience disclaim any liability or responsibility or duty of care towards any person for loss or damage caused by any use of, or reliance on the information contained in this publication.

## TABLE OF CONTENTS

### DIGITAL FILE CONTENT

Supplementary Data .....	Digital-Data (folder)
SEEBASE greater McArthur Basin Report .....	DIP017_SEEBASE_greater_McArthur_Basin.pdf
SEEBASE greater McArthur Basin Appendices .....	DIP017_Appendix_I-II.pdf
.....	DIP017_Appendix_III.pdf
Metadata (ANZLIC profile).....	DIP018-Metadata.pdf