



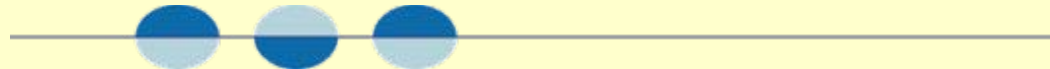
# An evaluation of the Lucy Creek Survey

Client: NuPower Resources Ltd

B Dickson

Dickson Research Pty Ltd

November 2007

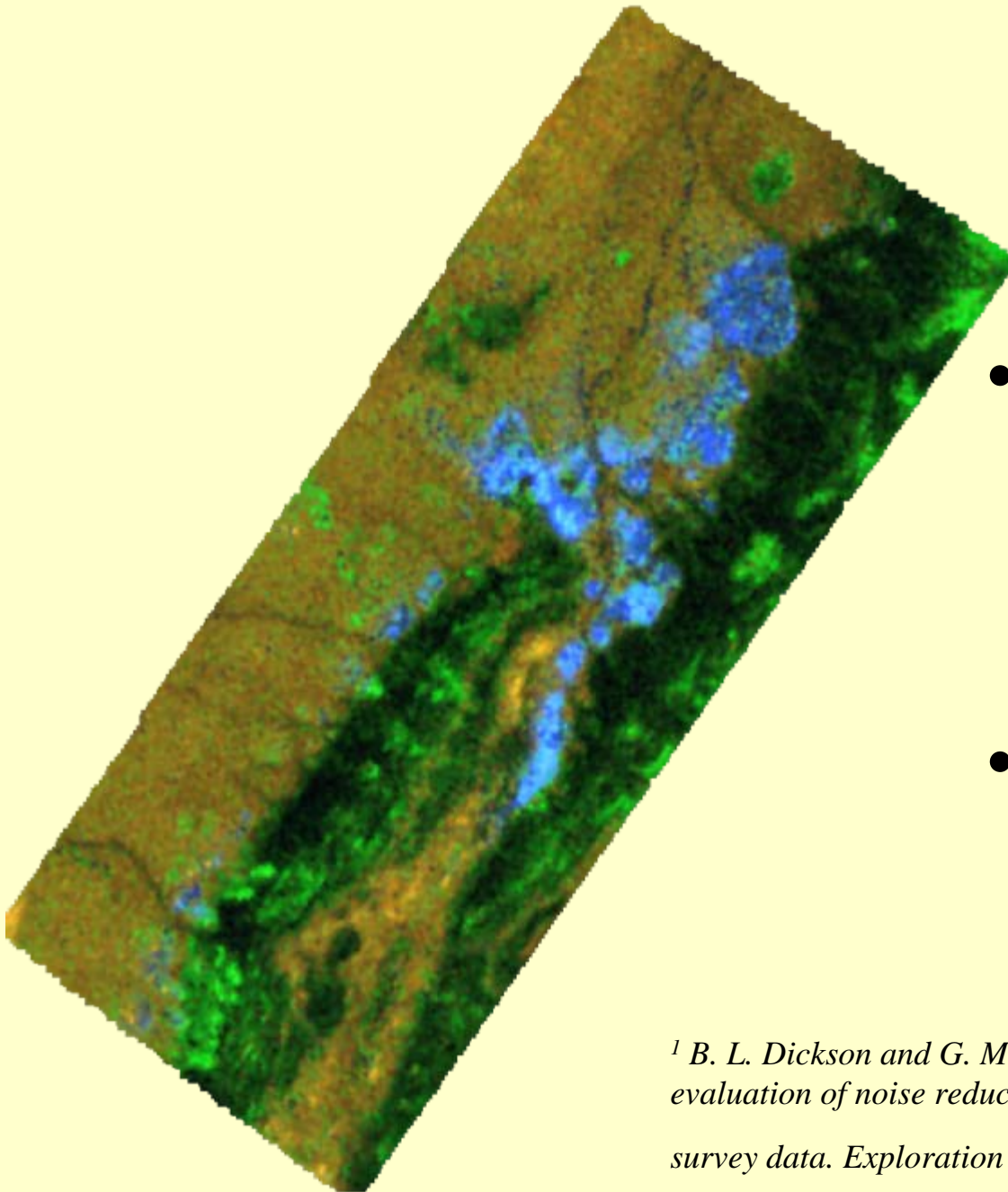


## Quality of survey

- This survey is of high quality as determined using examination of NASVD eigenvectors
- Because of its close flight line spacing and low flight clearance, small details are easily resolved
- One item of note is that the line spacing is less than the along line spacing of readings. In this case  $\frac{1}{2}$  or  $\frac{1}{3}$  sec readings would be better.

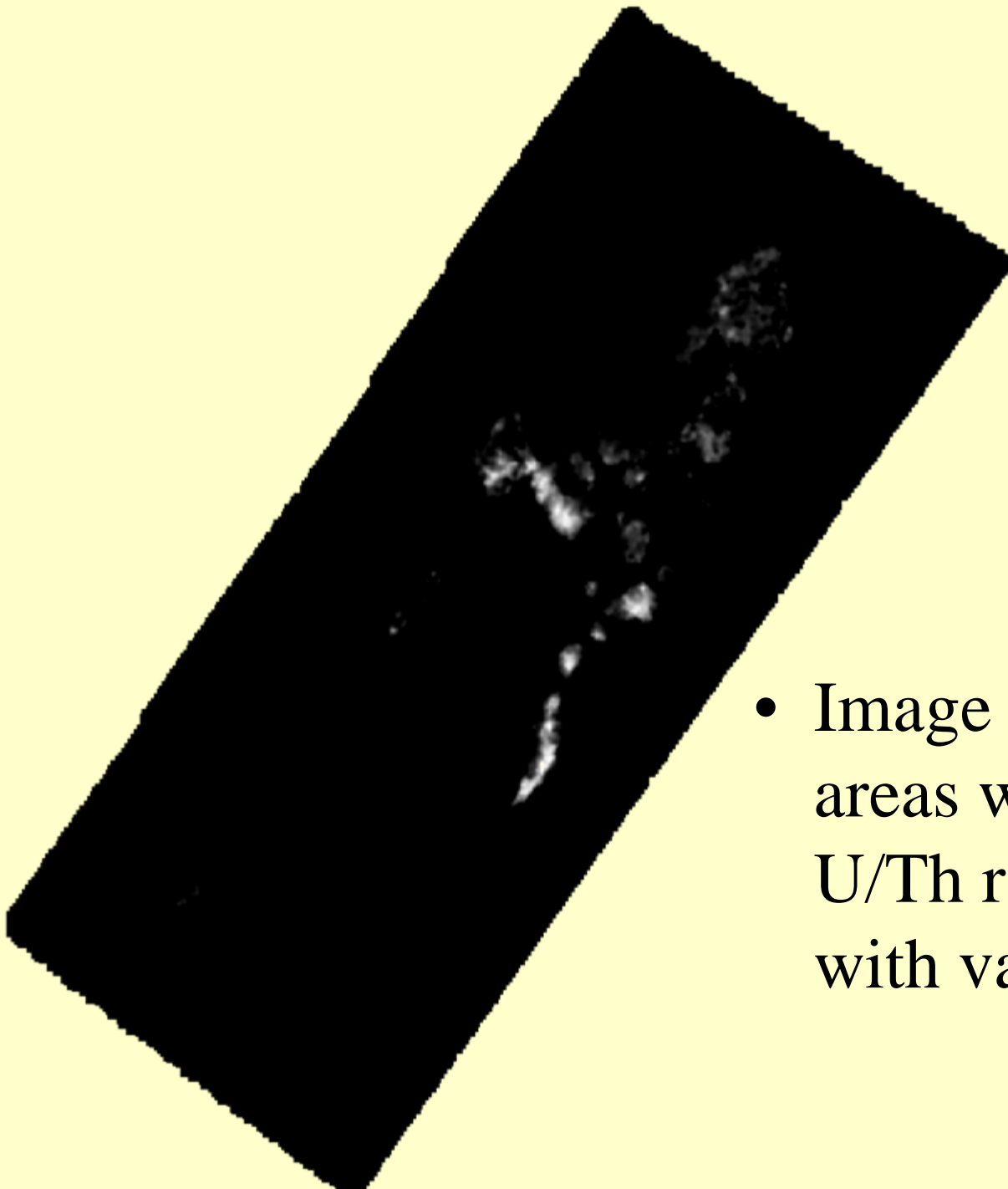
KUTh = rgb

- Image produced using SOM<sup>1</sup> noise reduction
- Linear stretch



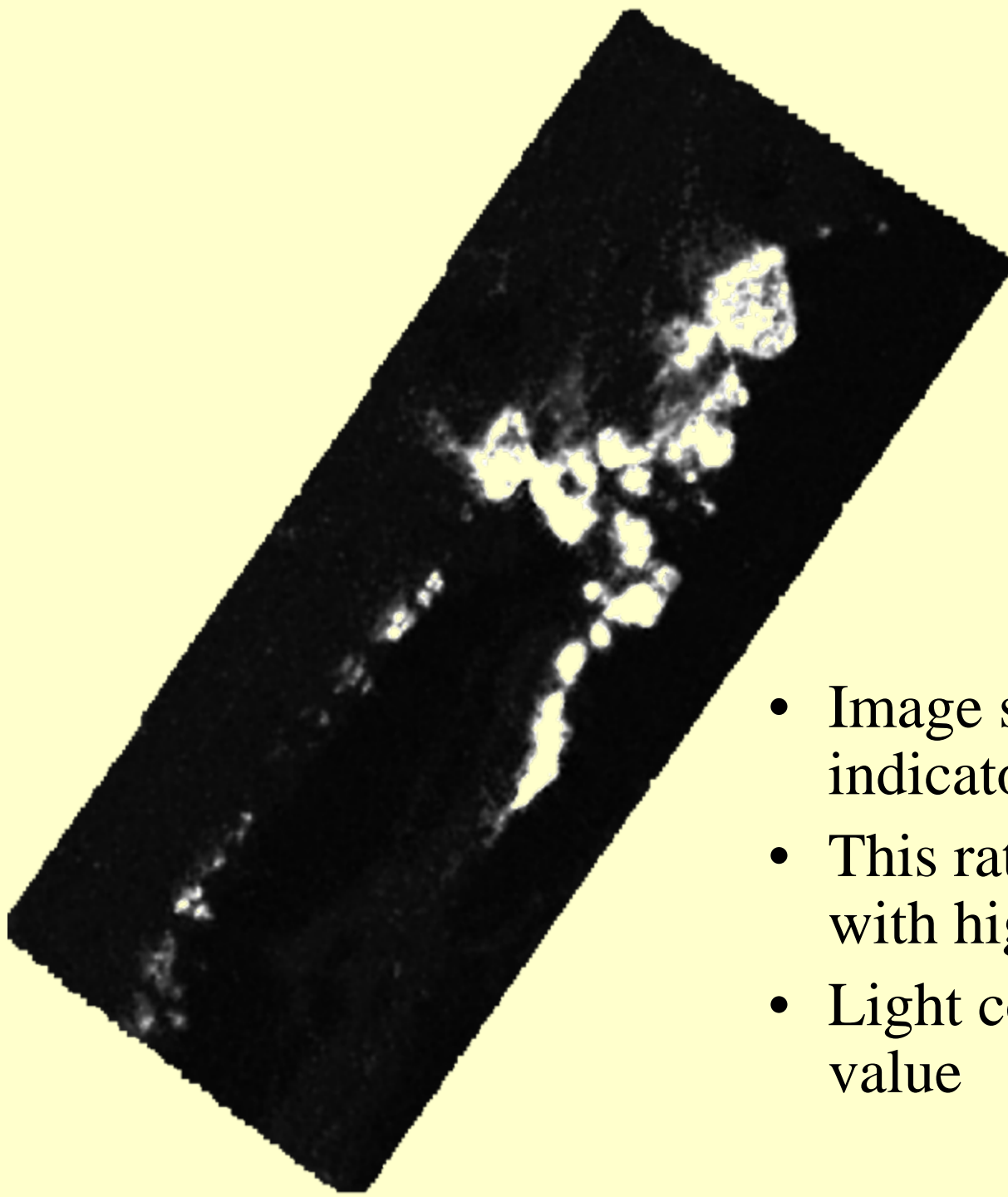
<sup>1</sup> B. L. Dickson and G. M. Taylor, 2003. *Quietening the noise: an evaluation of noise reduction methods applied to aerial gamma-ray survey data.* *Exploration Geophysics*, 34, 97–102.

U/Th ratio  
with value >  
1



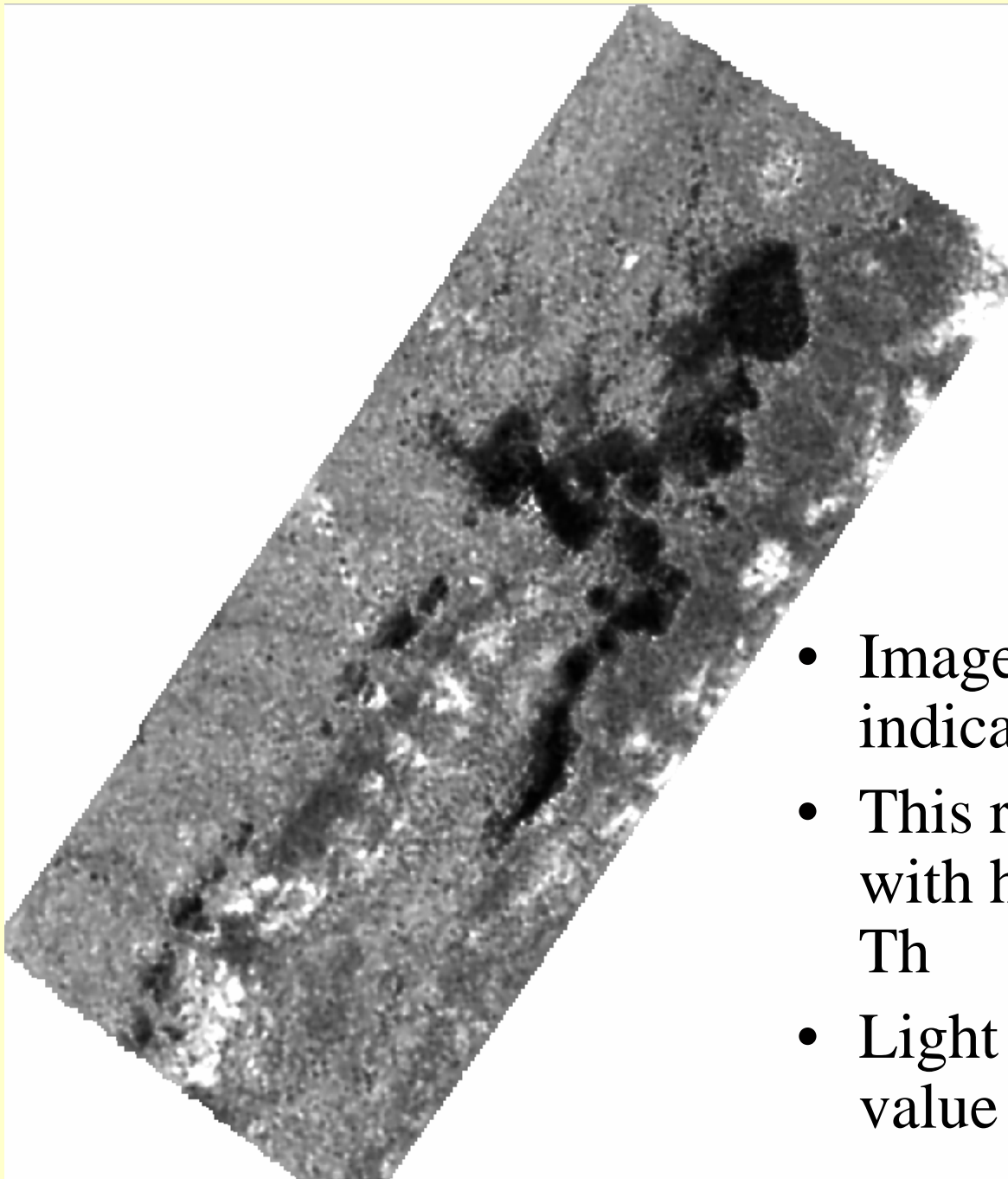
- Image shows the areas with highest U/Th ratios (those with values > 1)

# $U^*U/Th$ ratio



- Image shows this U indicator ratio
- This ratio highlights areas with high U/Th and high U
- Light color indicates high value

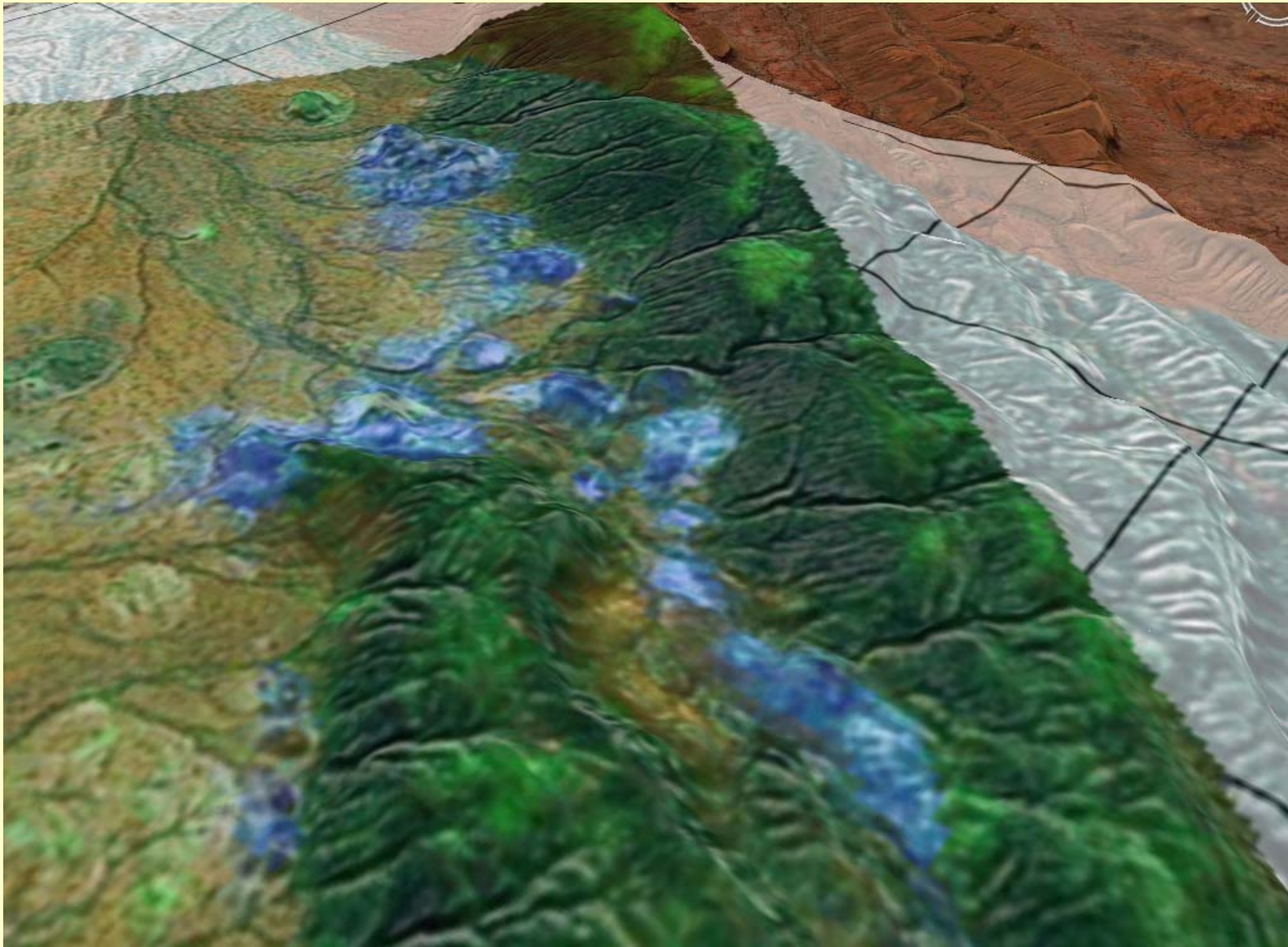
# Th\*Th/U ratio



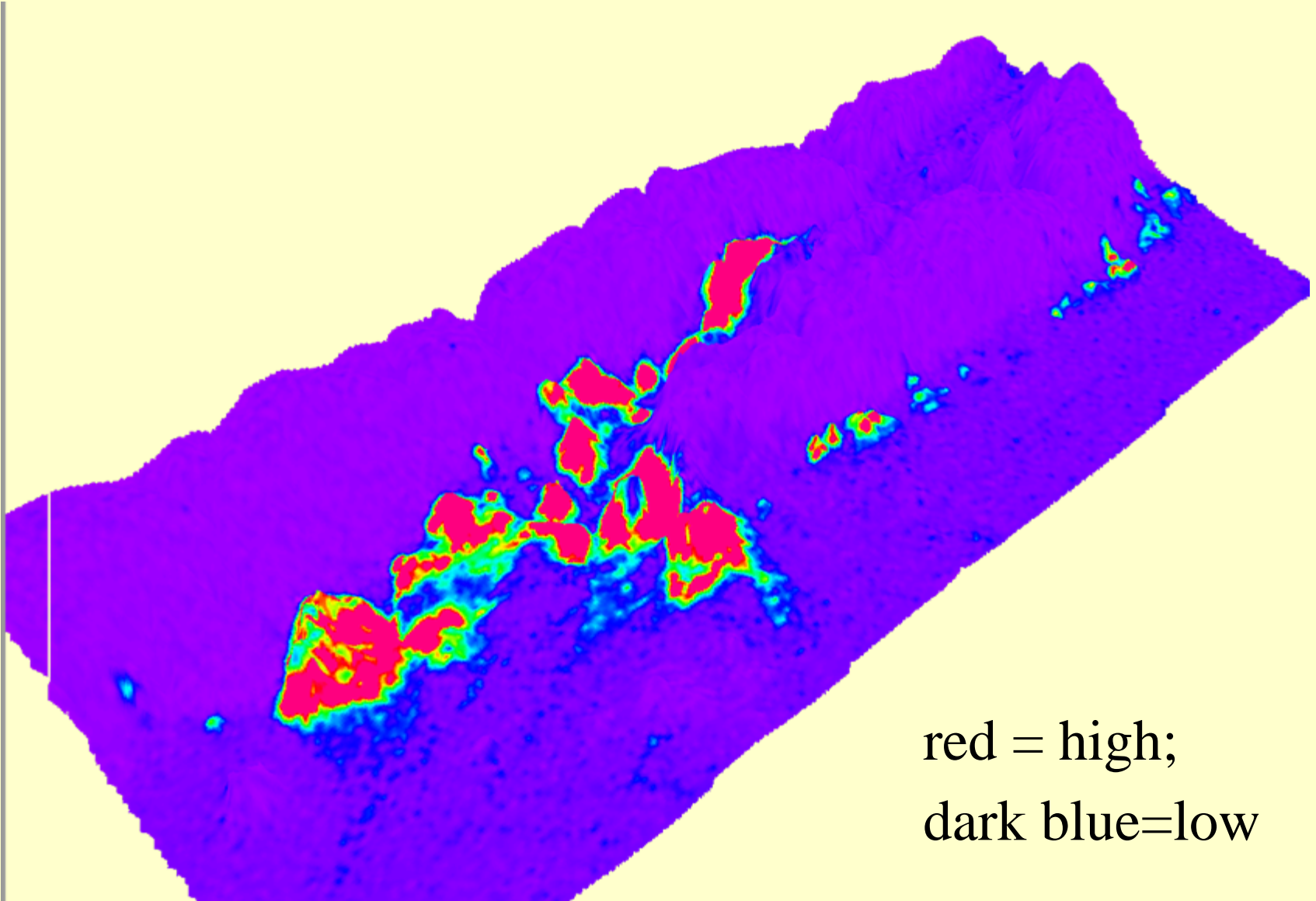
- Image shows this Th indicator ratio
- This ratio highlights areas with high Th/U and high Th
- Light color indicates high value



Radiometrics draped over terrain  
showing strong geological control of U-rich areas



# U\*U/Th ratio draped over DEM from aerial survey





# Th\*Th/U ratio draped over DEM from aerial survey

