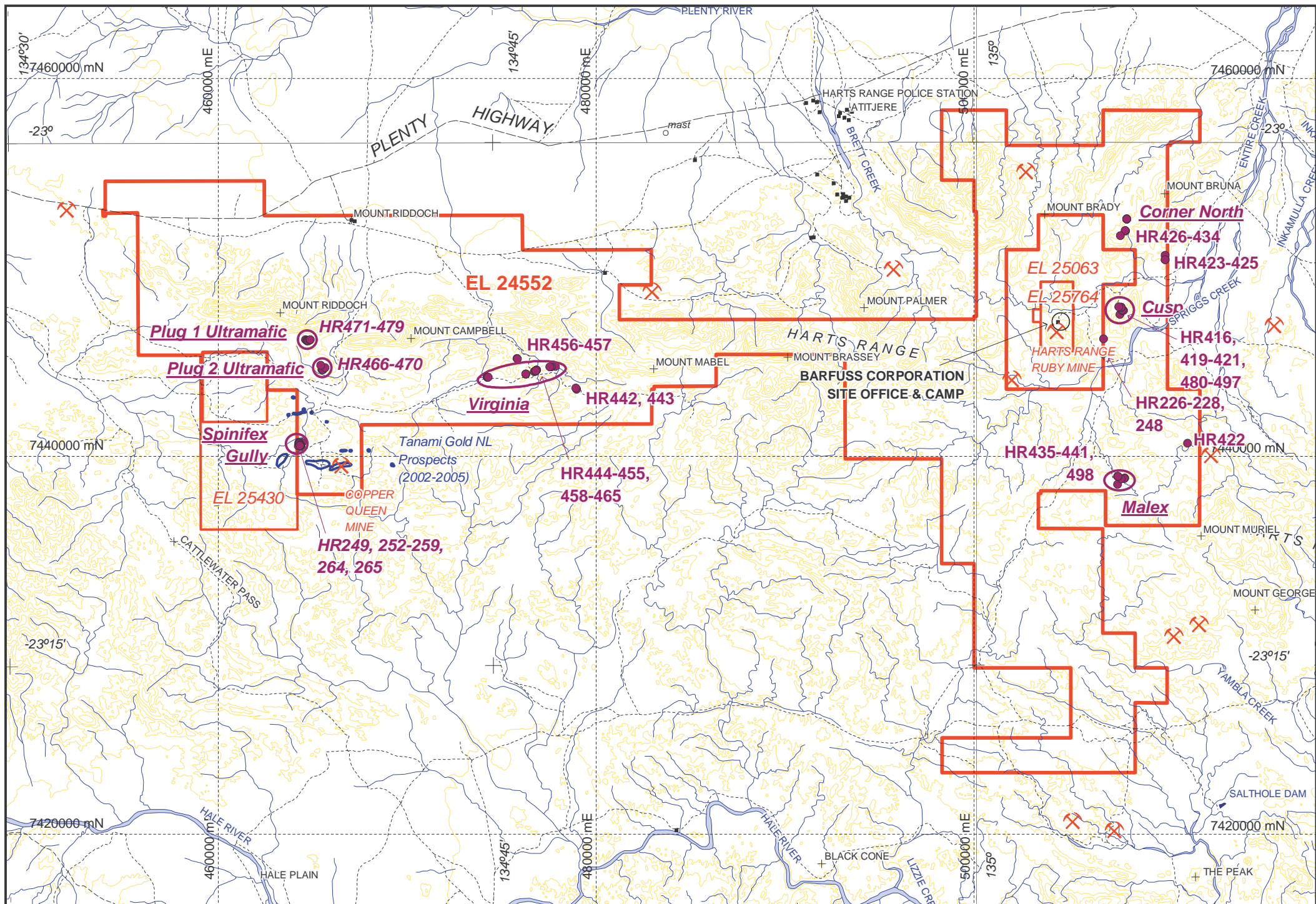
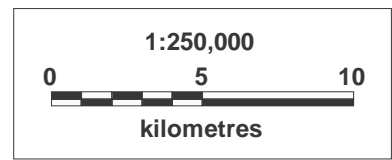
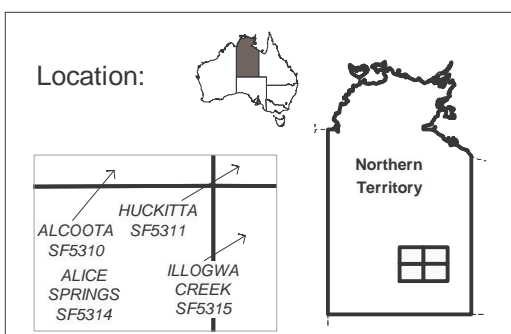


Figure 1




-  Principal Areas of Field Activities (2006-2007)
Virginia
-  Rock chip sample locations (2006-2007)
Samples **HR226-228, etc.**
-  Former Tanami Gold NL prospects
- Copper Queen, Copper King, Kongo, etc.
(2001-2005)
(copper-gold mineralisation, plus silver, platinum, palladium)

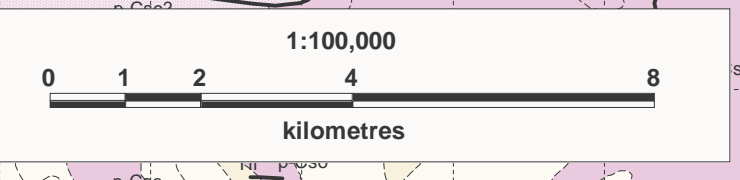
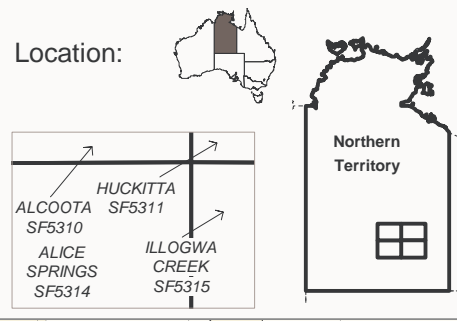
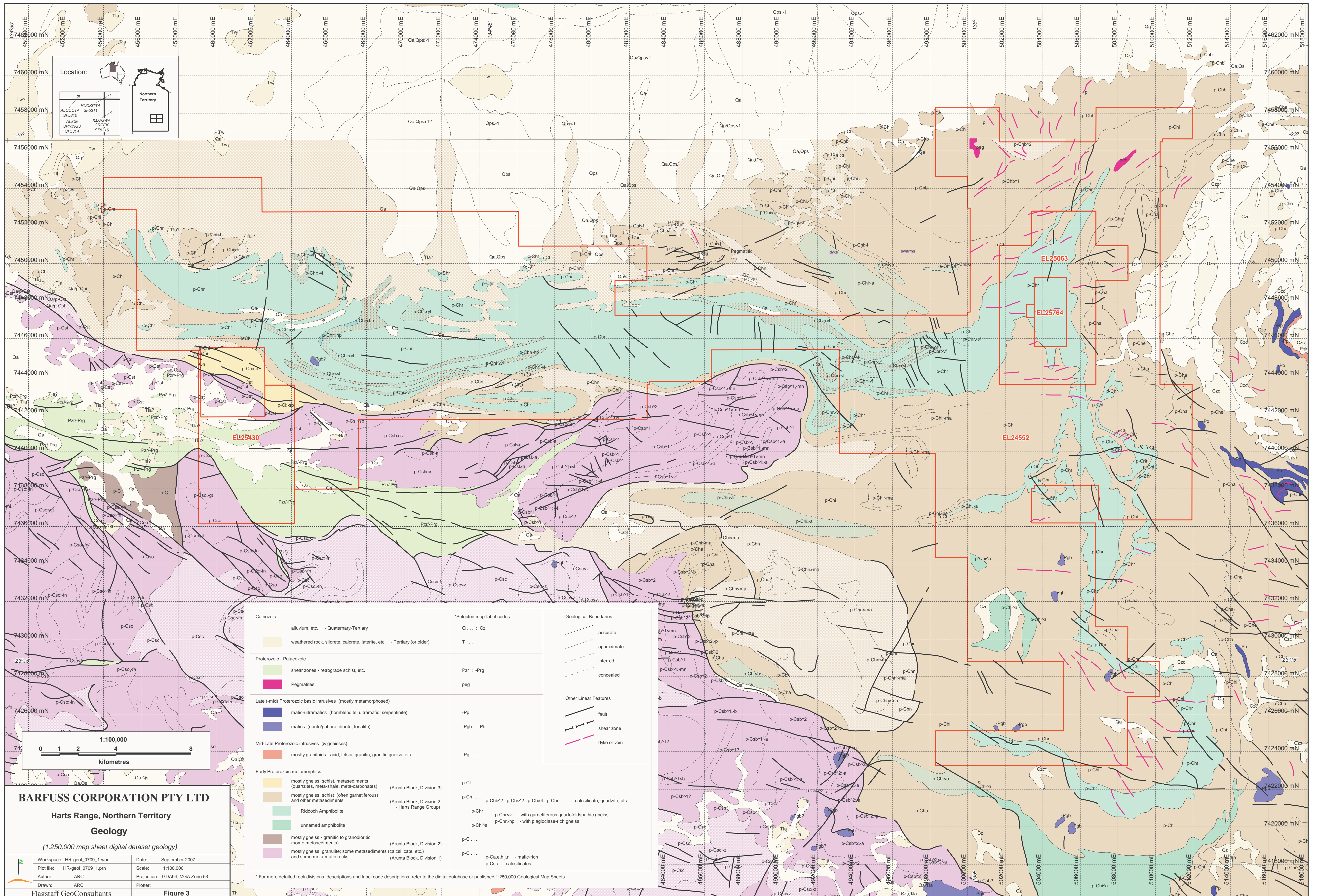


Barfuss Corporation's Harts Range Project is comprised of Exploration Licence EL 24552, Exploration Licences EL 25063 and EL 25430, Exploration Licence application EL 25764 and a number of Mineral Claim applications within the area of ELs 25063 and 25764.

Barfuss Corporation also has Mineral Claim coverage of the Harts Range Ruby Mine, where the company's site office and camp are located.

Topographic Data from the 1:250,000 Geological Map Sheet digital datasets for Alice Springs, Alcoota, Huckitta, Illogwa Creek.
(C) Copyright Commonwealth of Australia (Geoscience Australia) 2004)

BARFUSS CORPORATION PTY LTD		
Harts Range Project - EL 24552 - Northern Territory		
Field Activities		
Year Ending 25 August 2007		
	Workspace: EL24552-activities-0709.wor	Date: September 2006
	Plot file: EL24552-activities-0709.pdf	Scale: 1:250,000
	Author: ARC	Projection: GDA94, MGA Zone 53
	Drawn: ARC	Plotter: Adobe Acrobat Distiller 8.0
Flagstaff GeoConsultants		Figure 2



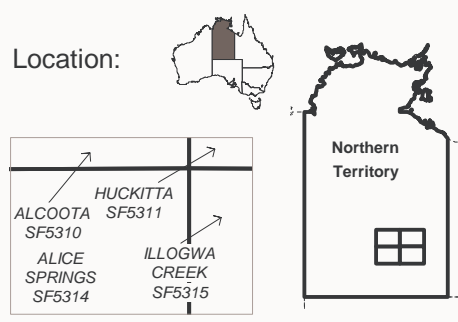
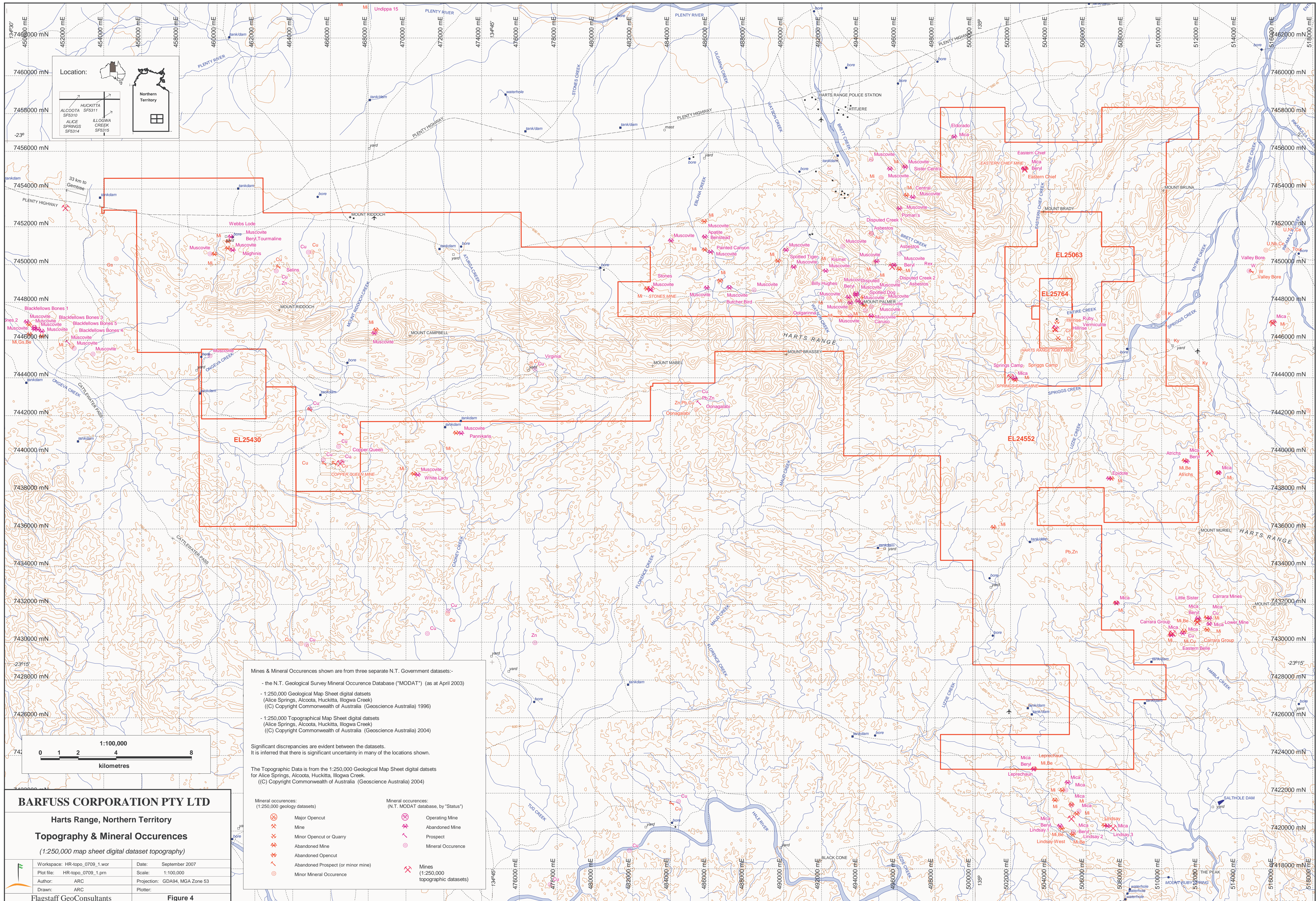
BARFUSS CORPORATION PTY LTD
Harts Range, Northern Territory
Geology
 (1:250,000 map sheet digital dataset geology)

Workspace: HR-geol_0709_1.wor Date: September 2007
 Plot file: HR-geol_0709_1.plt Scale: 1:100,000
 Author: ARC Projection: GDA94, MGA Zone 53
 Drawn: ARC Plotter:

Flagstaff GeoConsultants **Figure 3**

<p>Cainozoic</p> <ul style="list-style-type: none"> alluvium, etc. - Quaternary-Tertiary weathered rock, silcrete, calcrete, laterite, etc. - Tertiary (or older) 	<p>*Selected map-label codes:-</p> <ul style="list-style-type: none"> Q... : Cz T... 	<p>Geological Boundaries</p> <ul style="list-style-type: none"> accurate approximate inferred concealed
<p>Proterozoic - Palaeozoic</p> <ul style="list-style-type: none"> shear zones - retrograde schist, etc. Pegmatites 	<ul style="list-style-type: none"> Pzr : -Prg peg 	<p>Other Linear Features</p> <ul style="list-style-type: none"> fault shear zone dyke or vein
<p>Late (mid) Proterozoic basic intrusives (mostly metamorphosed)</p> <ul style="list-style-type: none"> mafic-ultramafics (hornblende, ultramafic, serpentinite) mafics (norite/gabbro, diorite, tonalite) 	<ul style="list-style-type: none"> -Pp -Pgb : -Pb 	
<p>Mid-Late Proterozoic intrusives (& gneisses)</p> <ul style="list-style-type: none"> mostly granitoids - acid, felsic, granitic, granitic gneiss, etc. 	<ul style="list-style-type: none"> -Pg... 	
<p>Early Proterozoic metamorphics</p> <ul style="list-style-type: none"> mostly gneiss, schist, metasediments (quartzites, meta-shale, meta-carbonates) (Arunta Block, Division 3) mostly gneiss, schist (often garnetiferous) and other metasediments (Arunta Block, Division 2 - Harts Range Group) Riddoch Amphibolite unnamed amphibolite mostly gneiss - granitic to granodioritic (some metasediments) (Arunta Block, Division 2) mostly gneiss, granite, some metasediments (calcsilicate, etc.) and some meta-mafic rocks (Arunta Block, Division 1) 	<ul style="list-style-type: none"> p-Ci p-Chr... p-Chb*2, p-Chs*2, p-Chs*4, p-Chn... - calcsilicate, quartzite, etc. p-Chr p-Chr-vf - with garnetiferous quartzofeldspathic gneiss p-Chr-hp - with plagioclase-rich gneiss p-Chi/a p-C... p-C... p-Ca.e.h.l.n - mafic-rich p-Csc - calcsilicates 	

* For more detailed rock divisions, descriptions and label code descriptions, refer to the digital database or published 1:250,000 Geological Map Sheets.



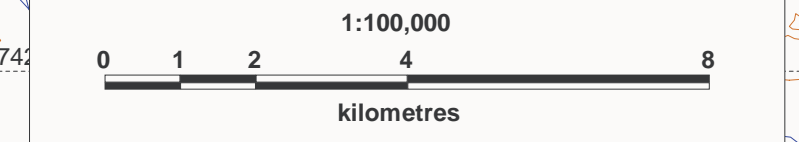
Mines & Mineral Occurrences shown are from three separate N.T. Government datasets:-

- the N.T. Geological Survey Mineral Occurrence Database ("MODAT") (as at April 2003)
- 1:250,000 Geological Map Sheet digital datasets (Alice Springs, Alcoota, Huckitta, Illogwa Creek) (C) Copyright Commonwealth of Australia (Geoscience Australia) 1996)
- 1:250,000 Topographical Map Sheet digital datasets (Alice Springs, Alcoota, Huckitta, Illogwa Creek) (C) Copyright Commonwealth of Australia (Geoscience Australia) 2004)

Significant discrepancies are evident between the datasets. It is inferred that there is significant uncertainty in many of the locations shown.

The Topographic Data is from the 1:250,000 Geological Map Sheet digital datasets for Alice Springs, Alcoota, Huckitta, Illogwa Creek. (C) Copyright Commonwealth of Australia (Geoscience Australia) 2004)

Mineral occurrences: (1:250,000 geology datasets)	Mineral occurrences: (N.T. MODAT database, by "Status")
Major Openpit	Operating Mine
Mine	Abandoned Mine
Minor Openpit or Quarry	Prospect
Abandoned Mine	Mineral Occurrence
Abandoned Openpit	Mines (1:250,000 topographic datasets)
Abandoned Prospect (or minor mine)	
Minor Mineral Occurrence	



BARFUSS CORPORATION PTY LTD

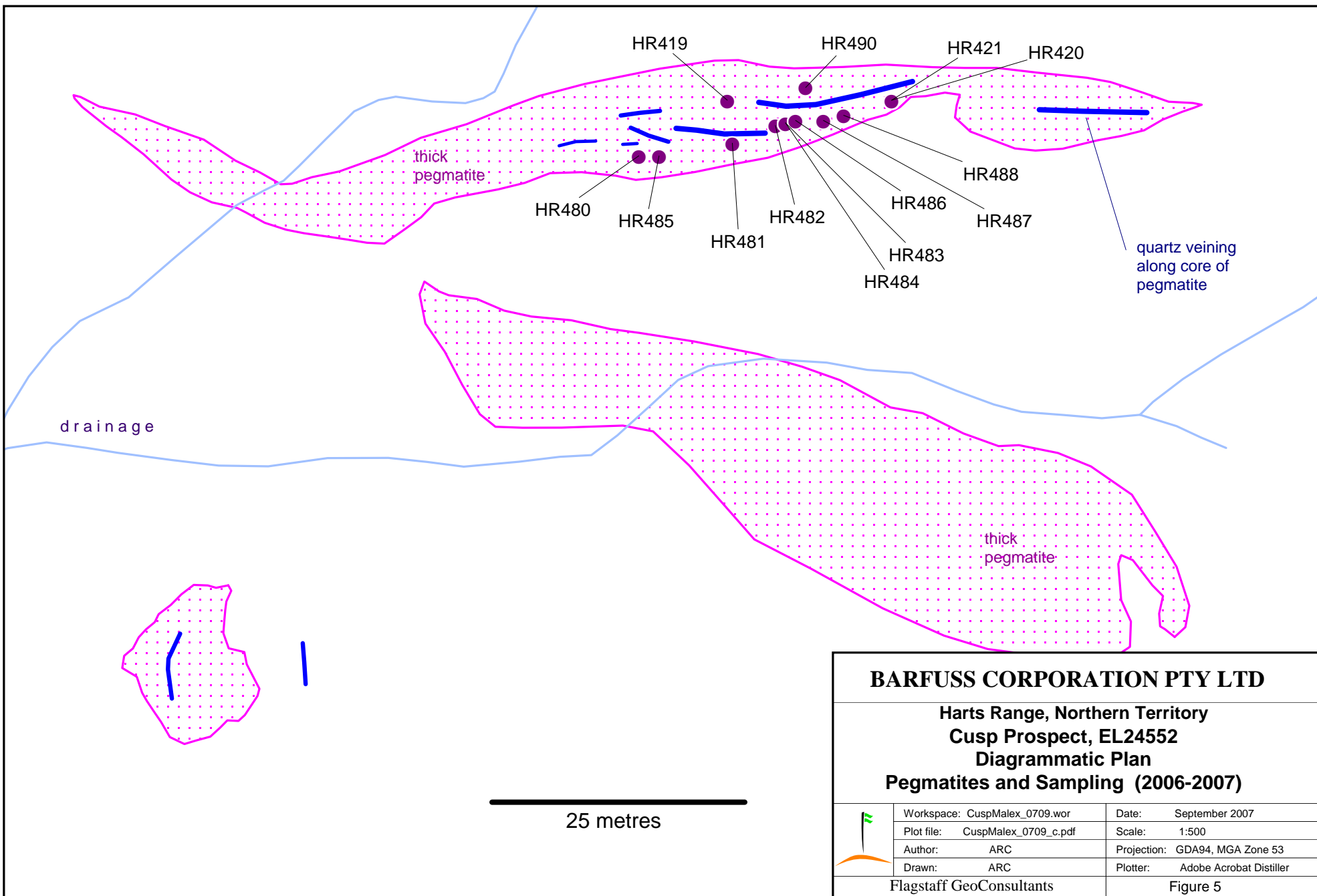
Harts Range, Northern Territory

Topography & Mineral Occurrences

(1:250,000 map sheet digital dataset topography)

Workspace: HR-topo_0709_1.wor	Date: September 2007
Plot file: HR-topo_0709_1.plt	Scale: 1:100,000
Author: ARC	Projection: GDA94, MGA Zone 53
Drawn: ARC	Plotted:


Flagstaff GeoConsultants **Figure 4**

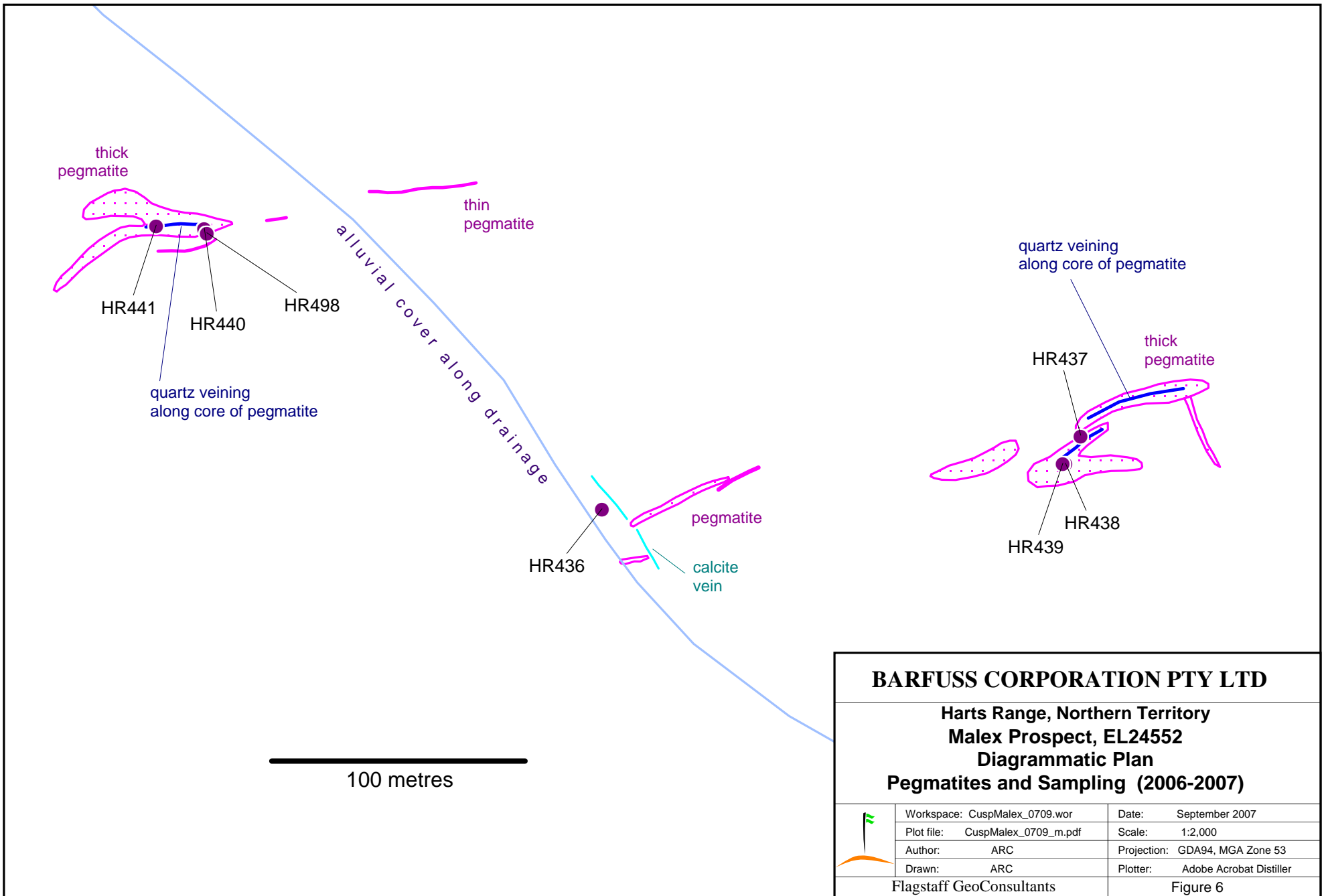


BARFUSS CORPORATION PTY LTD

**Harts Range, Northern Territory
Cusp Prospect, EL24552
Diagrammatic Plan**


Pegmatites and Sampling (2006-2007)

	Workspace: CuspMalex_0709.wor	Date: September 2007
	Plot file: CuspMalex_0709_c.pdf	Scale: 1:500
	Author: ARC	Projection: GDA94, MGA Zone 53
	Drawn: ARC	Plotter: Adobe Acrobat Distiller
Flagstaff GeoConsultants		Figure 5



BARFUSS CORPORATION PTY LTD

**Harts Range, Northern Territory
Malex Prospect, EL24552
Diagrammatic Plan
Pegmatites and Sampling (2006-2007)**

	Workspace: CuspMalex_0709.wor	Date: September 2007
	Plot file: CuspMalex_0709_m.pdf	Scale: 1:2,000
	Author: ARC	Projection: GDA94, MGA Zone 53
	Drawn: ARC	Plotter: Adobe Acrobat Distiller
Flagstaff GeoConsultants		Figure 6