

# CROCKER

## DATA PROCESSING

# EAST MEREENIE - 30

## Composite Logs

Company	AGL PETROLEUM
Company Name Line 1	MOONIE OIL NL
Well Name	EAST MEREENIE - 30
Country	AUSTRALIA
State	N.T.
Field Loc. 1 / Northing	7 340 401.9
Field Loc. 2 / Easting	765 137.0
Latitude	024 01' 34.600" S DMS
Longitude	131 36' 24.700" E DMS
Perm. Datum	MSL
Elevation Perm. Datum	0.00 M
Elevation KB (wrt EPD)	752.80 M
Elevation GL (wrt EPD)	747.00 M
Elev. Log Zero (wrt EPD)	753.00 M
Services	FMSA-GR, DLL-SP-CAL-MSFL
Other Services Ln 1	LDL-CNL-GR-CALI
Other Services Ln 2	AS-GR
Other Services Ln 3	HOFDO DIR. SURVEY.
Service company	SCHLUMBERGER
Basin	AMADEUS
Permit	PL 5
Spud Date	8-7-92
Rig Release Date	9-8-92
Date Plotted	Thursday, 12 June 2008
Time Plotted	3:47:02 PM

 **PETROLOG**  
ADVANCED LOG ANALYSIS SOFTWARE

PETROLOG SOFTWARE Version 10.5 (Beta)

 **PETROLOG**  
ADVANCED LOG ANALYSIS SOFTWARE

### Run Information

Run number	1	2			
Log date	27 JUL 1992	6 AUG 1992			
Depth-Driller	1196.00 M	1533.00 M			
Depth-Logger	1196.00 M				
Bottom log interval	1196.00 M	1539.00 M			

Top log interval	917.00 M	1196.00 M			
Casing-Driller	695.00 M	1190.00 M			
Casing-Logger		1196.00 M			
Casing Diameter	9.875 INCH	8.625 INCH			
Bit Size	13.500 INCH	9.875 INCH			
Hole Fluid type	AIR FOAM	KCL-EZ MUD			
Fluid Density	1.000 G/CC	1.000 G/CC			
Witness	R. GROVES, E. ESPI	R. GROVES, E. ESPI			

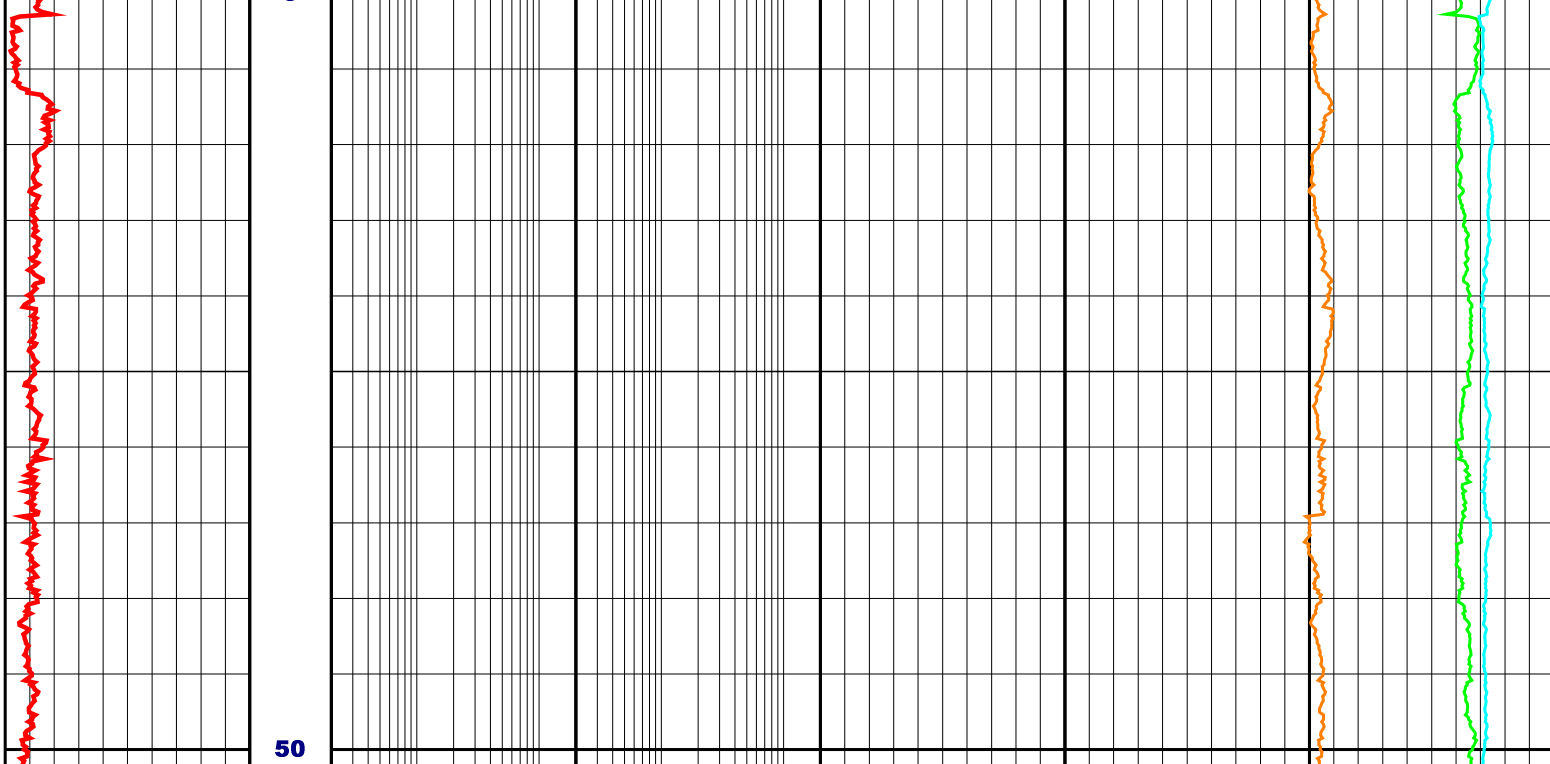
CASINGS: 15" to 35m, 10.75 to 695m, 8.625 to 1190m and 5.5" to 1533m  
 Bit sizes: 17.5" to 35m, 13.5" to 695m, 9.825" to 1190m and 5.5" to 1533m  
 Air and foam drilled to 1308m and KCL/ EZMUD below 1308m  
 Perforated intervals: 1445.5 - 1455.5m and 1482 - 1489m  
 LOGS LOADED AND MERGED FROM LIS FORMAT TAPES IN MAY 2008. Well header information obtained from Drill reports and incomplete.

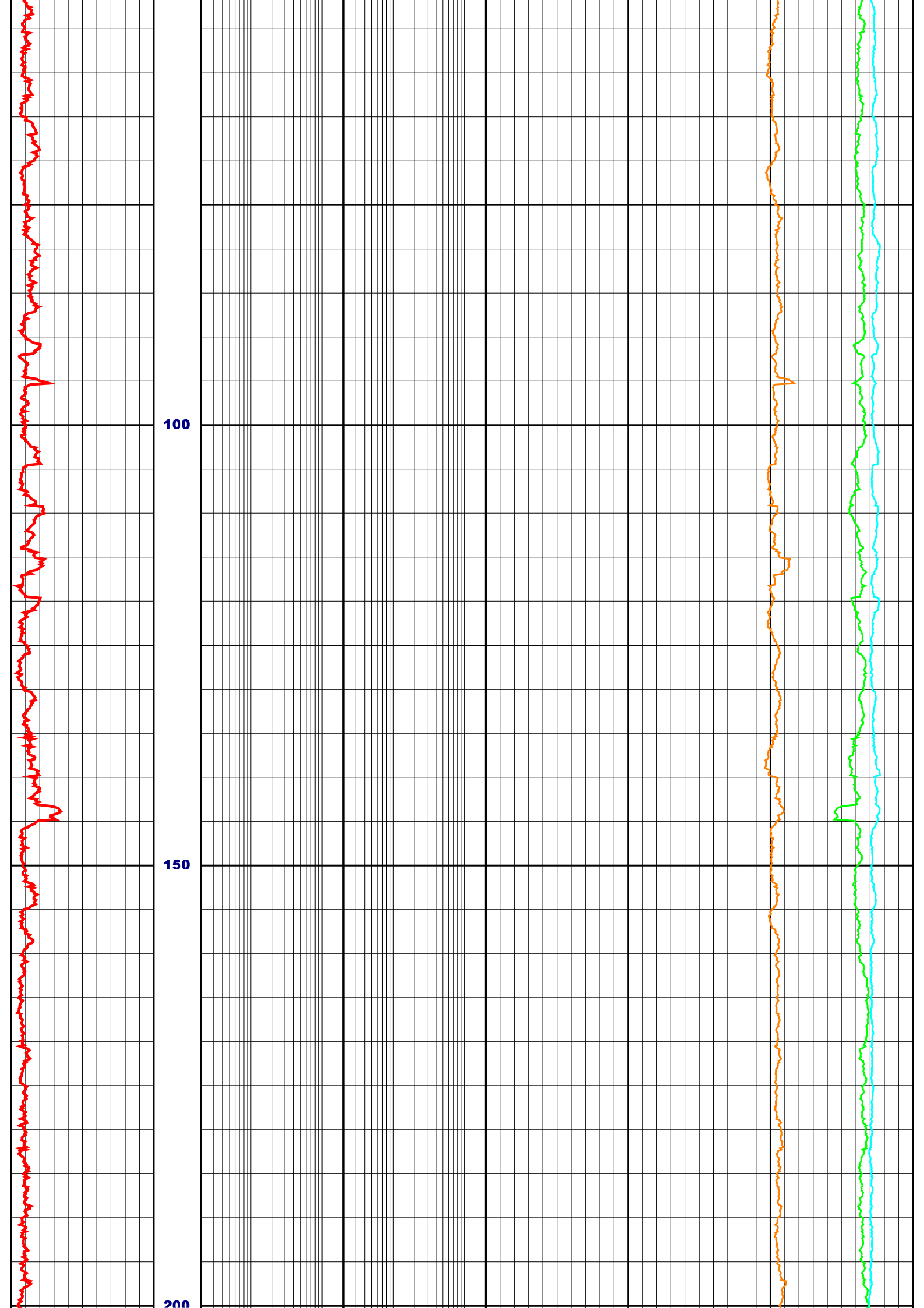
Since well log interpretations are opinions based upon inferences from well logs, we cannot and do not guarantee the correctness or accuracy of any interpretation. Therefore we shall not be liable or responsible for any loss, damage, cost or expense incurred or sustained by anyone resulting from any interpretation.

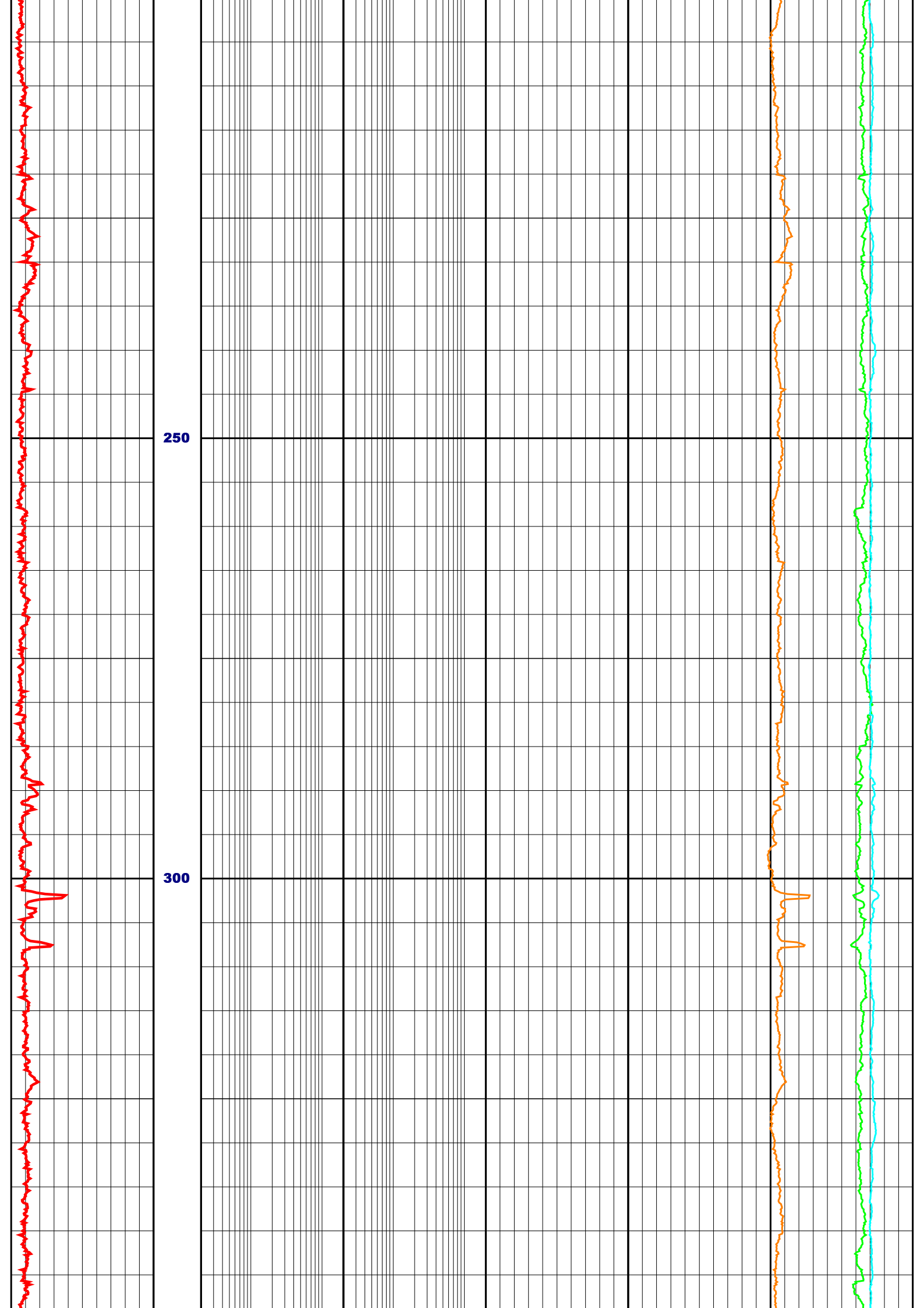
## Log Description

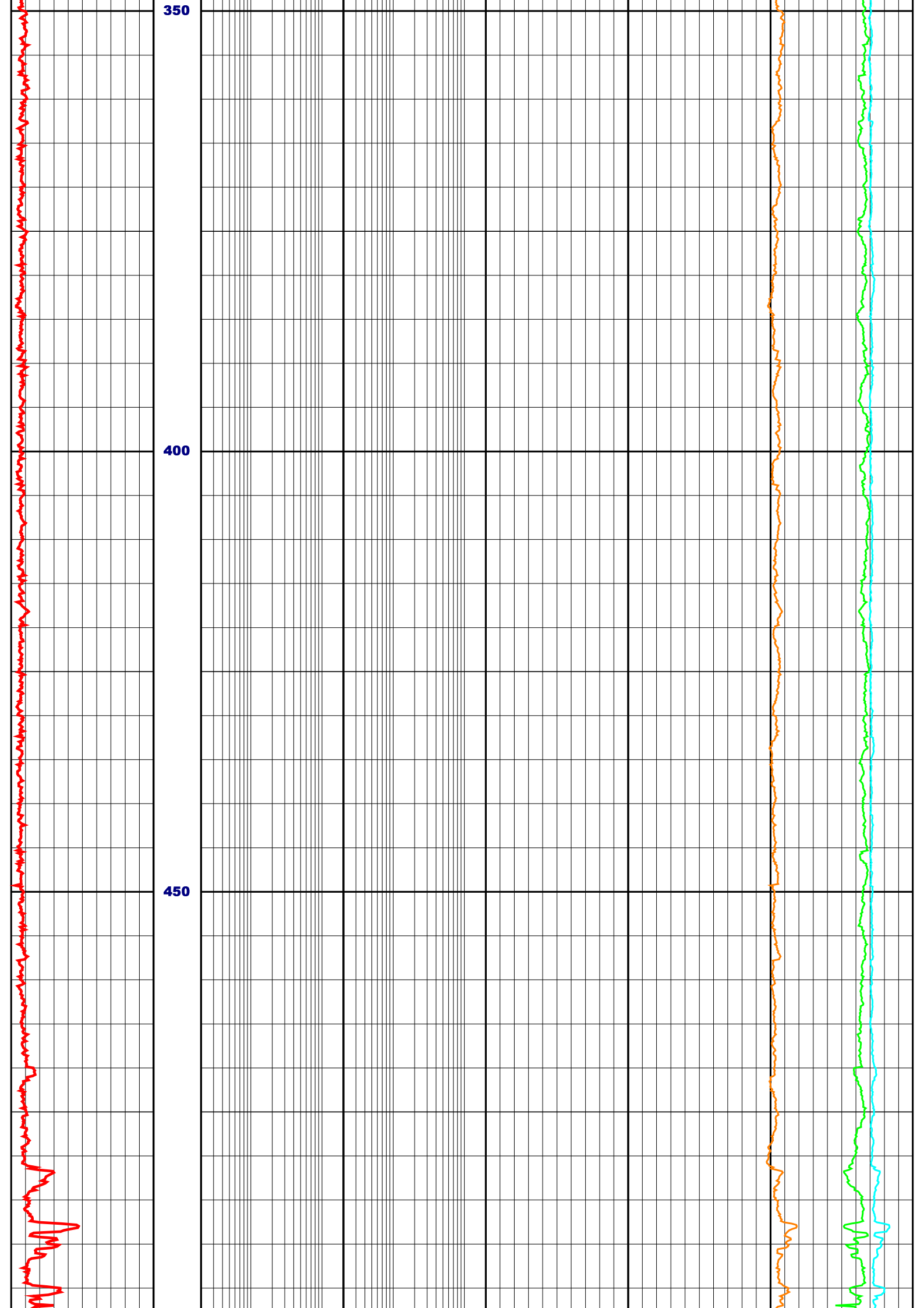
- GR            Gamma Ray
- BS            Bit Size
- CALI         Caliper
- SP            Spontaneous Potential Log
- LLD         Laterolog Deep Resistivity
- LLS         Shallow Laterolog
- MSFL        Micro Spherically Focused Log
- RHOB        Compensated Formation Density
- NPHI        Neutron Porosity
- DT            Delta T Compressional
- PEF         Photoelectric Factor
- DRHO        Density Correction
- THOR        Thorium Concentration
- URAN        Uranium Concentration
- POTA        Potassium Concentration

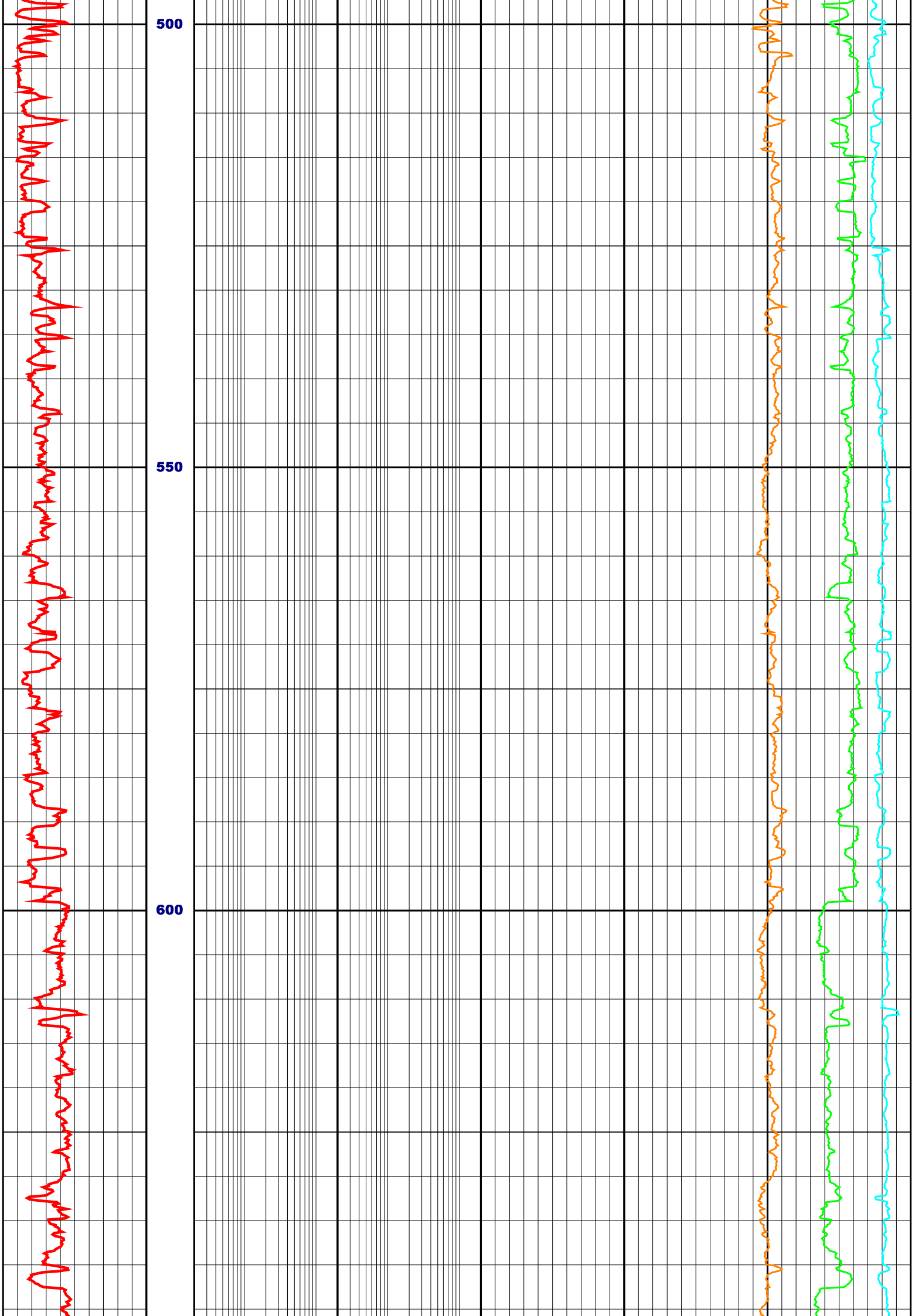
0.0	GR (API)	200.0	DEPTH	0.2	LLD (OHMM)	2000.0	1.95	RHOB (G/C3)	2.95	28.0	THOR (PPM)	-12.0
6.0	BS (INCH)	26.0	M	0.2	LLS (OHMM)	2000.0	0.45	NPHI (V/V)	-0.15	0.0	URAN (PPM)	20.0
6.0	CALI (INCH)	26.0	1:500	0.2	MSFL (OHMM)	2000.0	140.0	DT (US/F)	40.0	-0.14	POTA (V/V)	0.06
-60.0	SP (MV)	20.0					0.0	PEF (B/E)	10.0	-0.25	DRHO (G/C3)	0.25

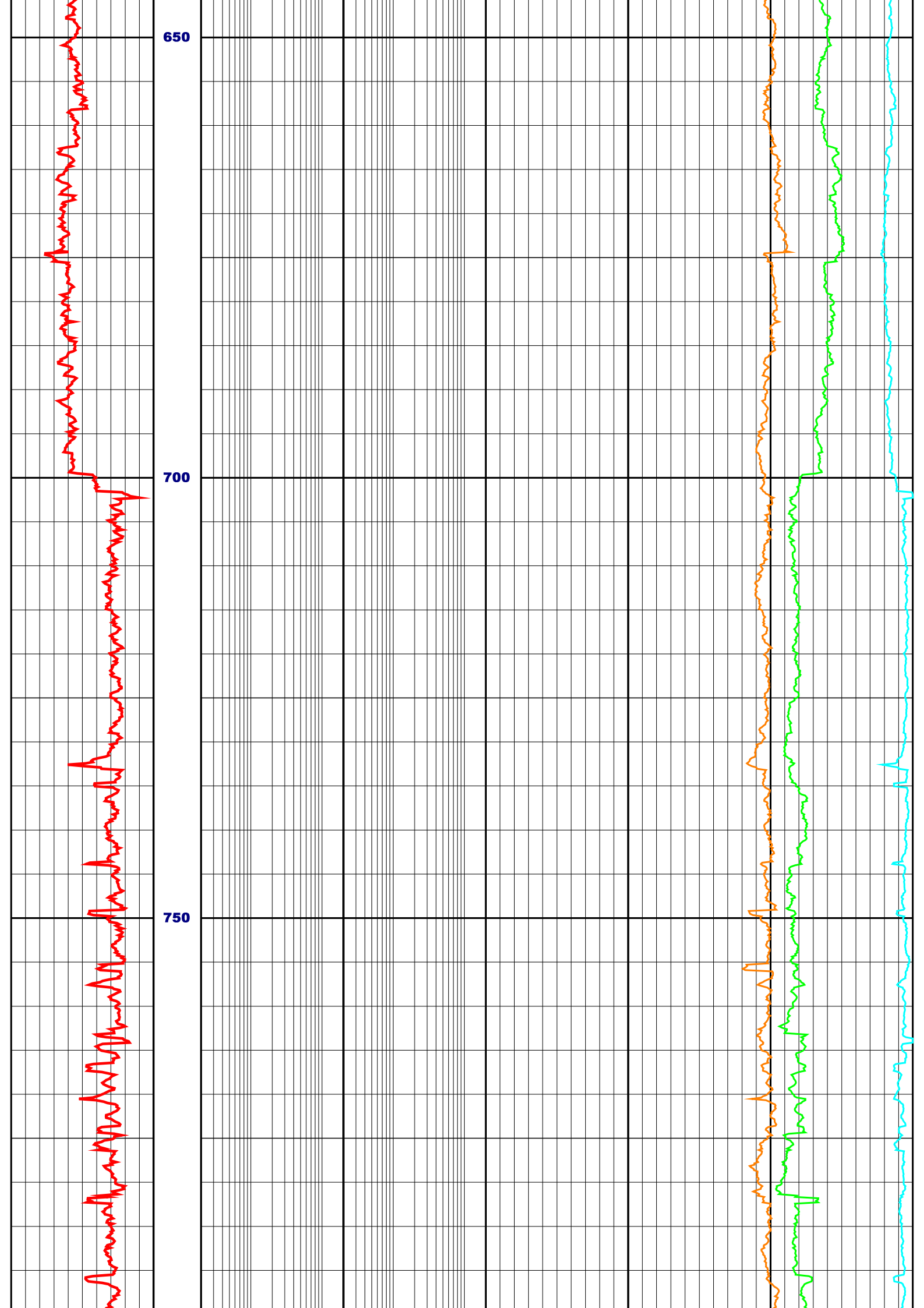


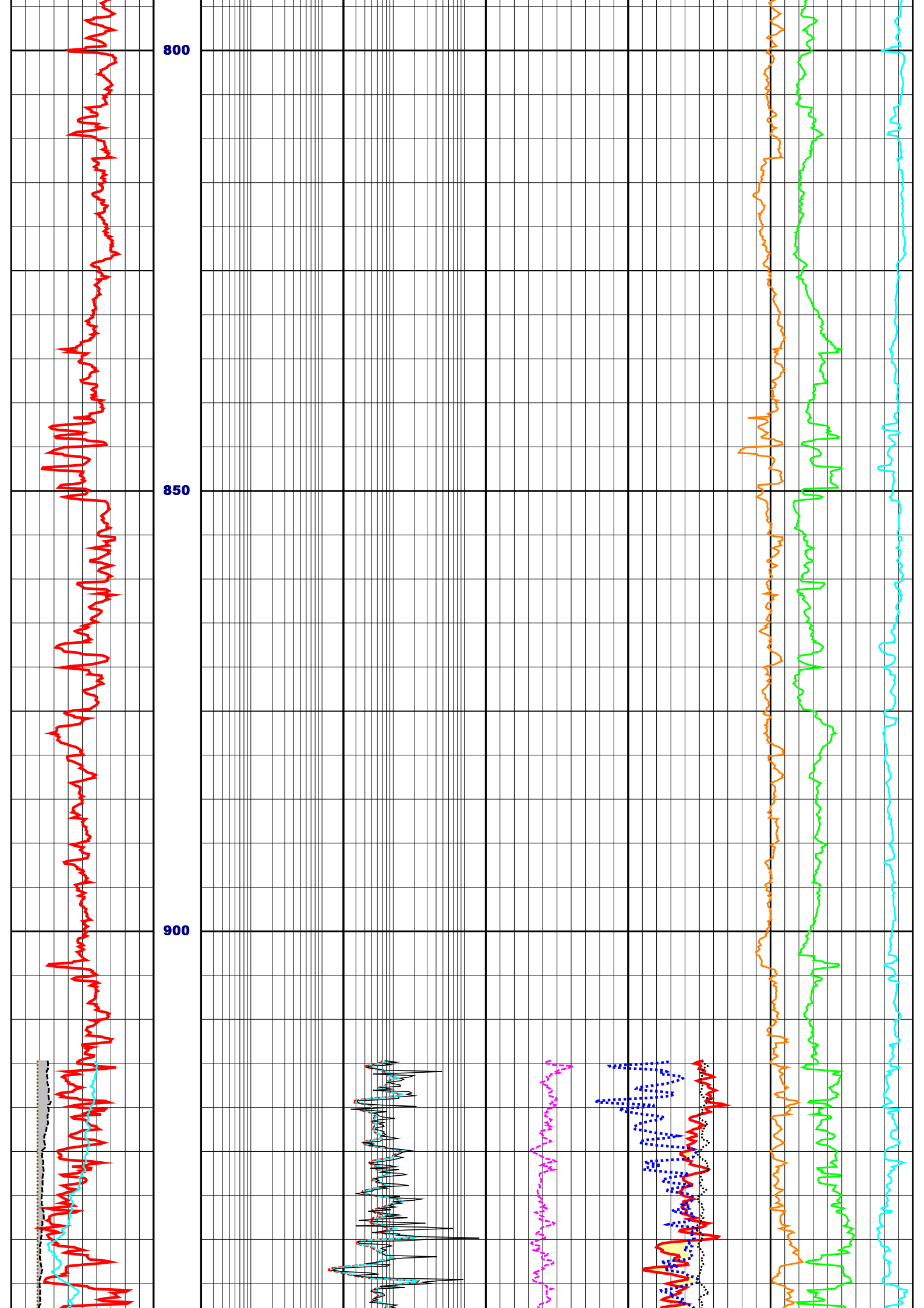




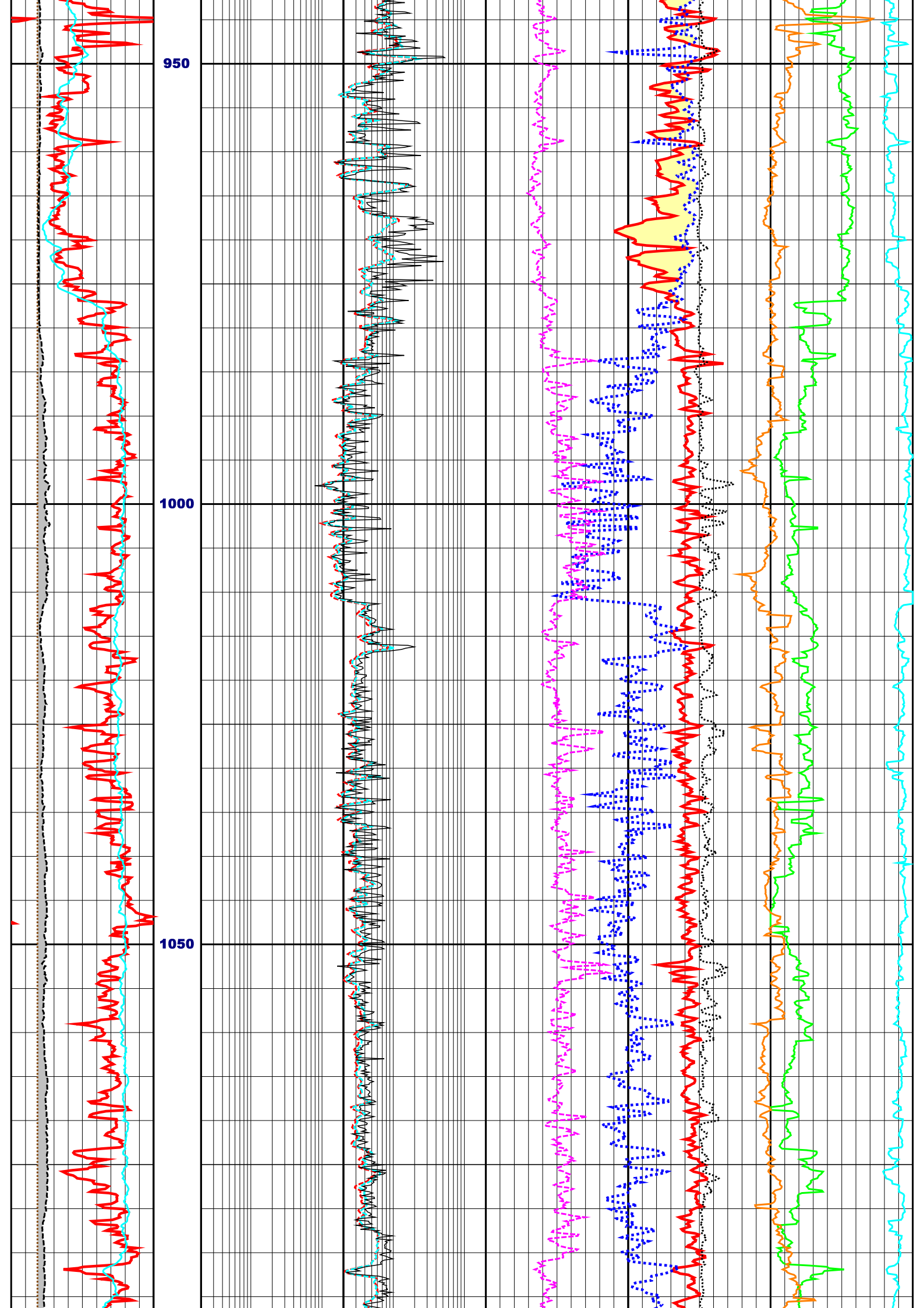


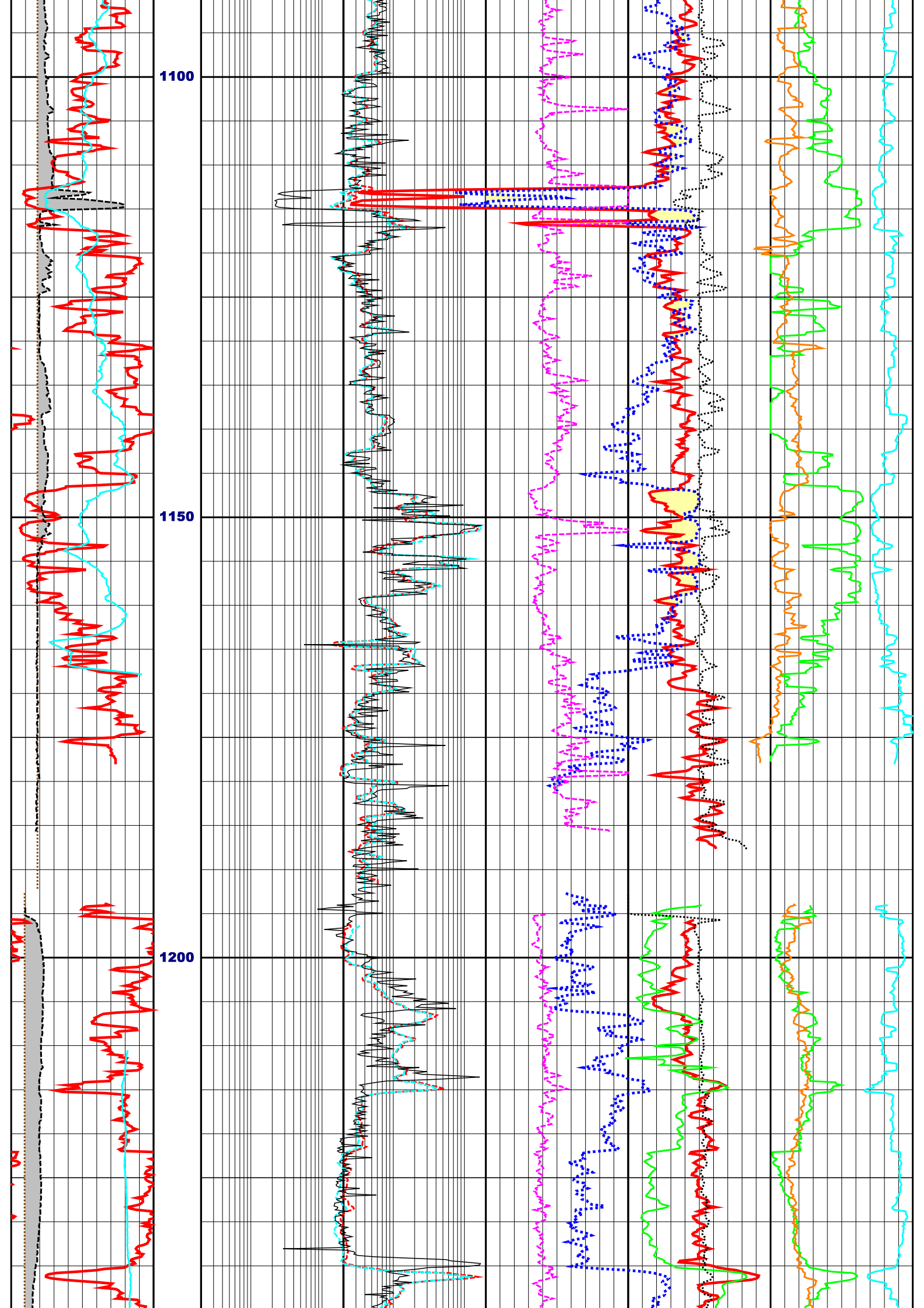


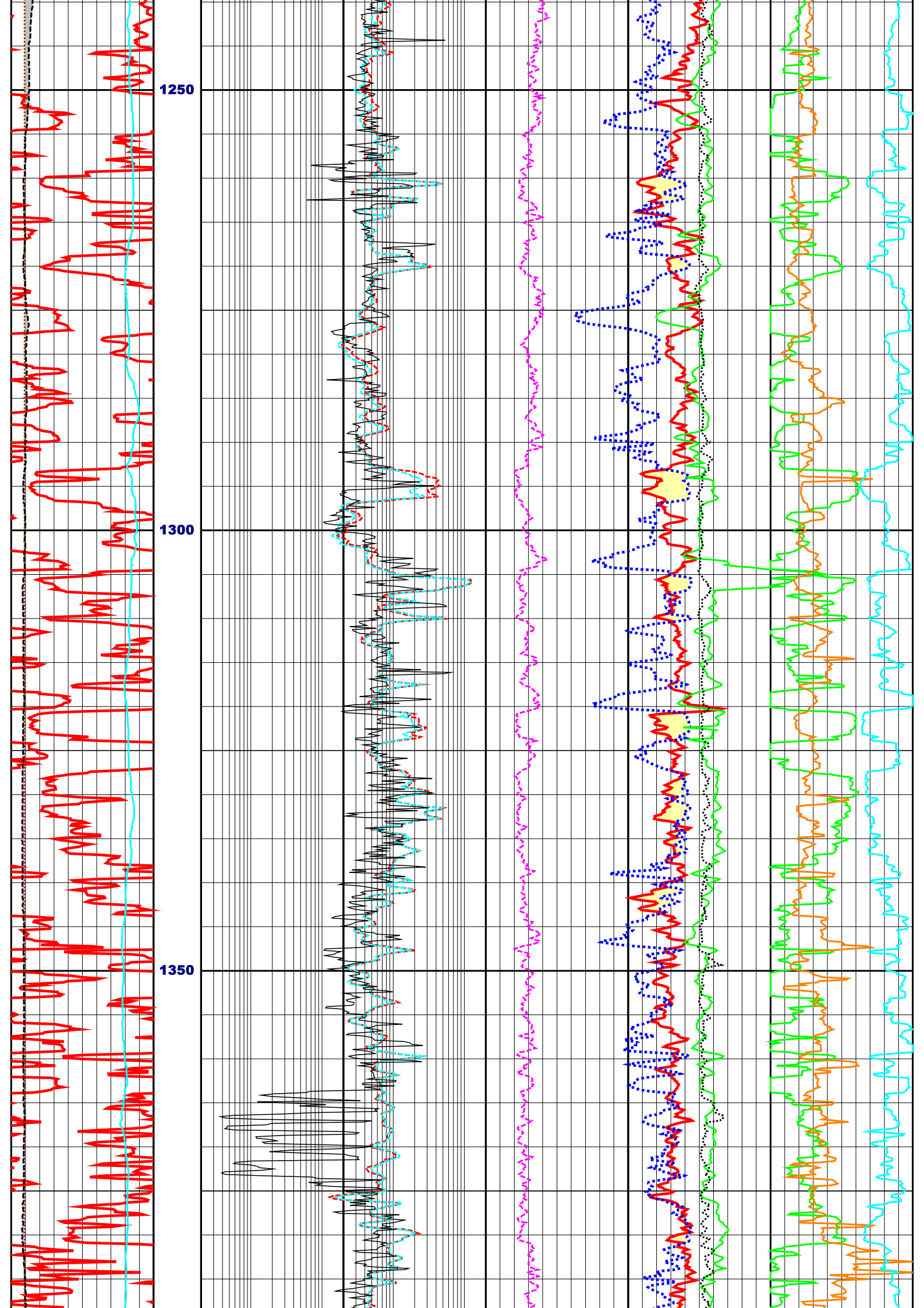


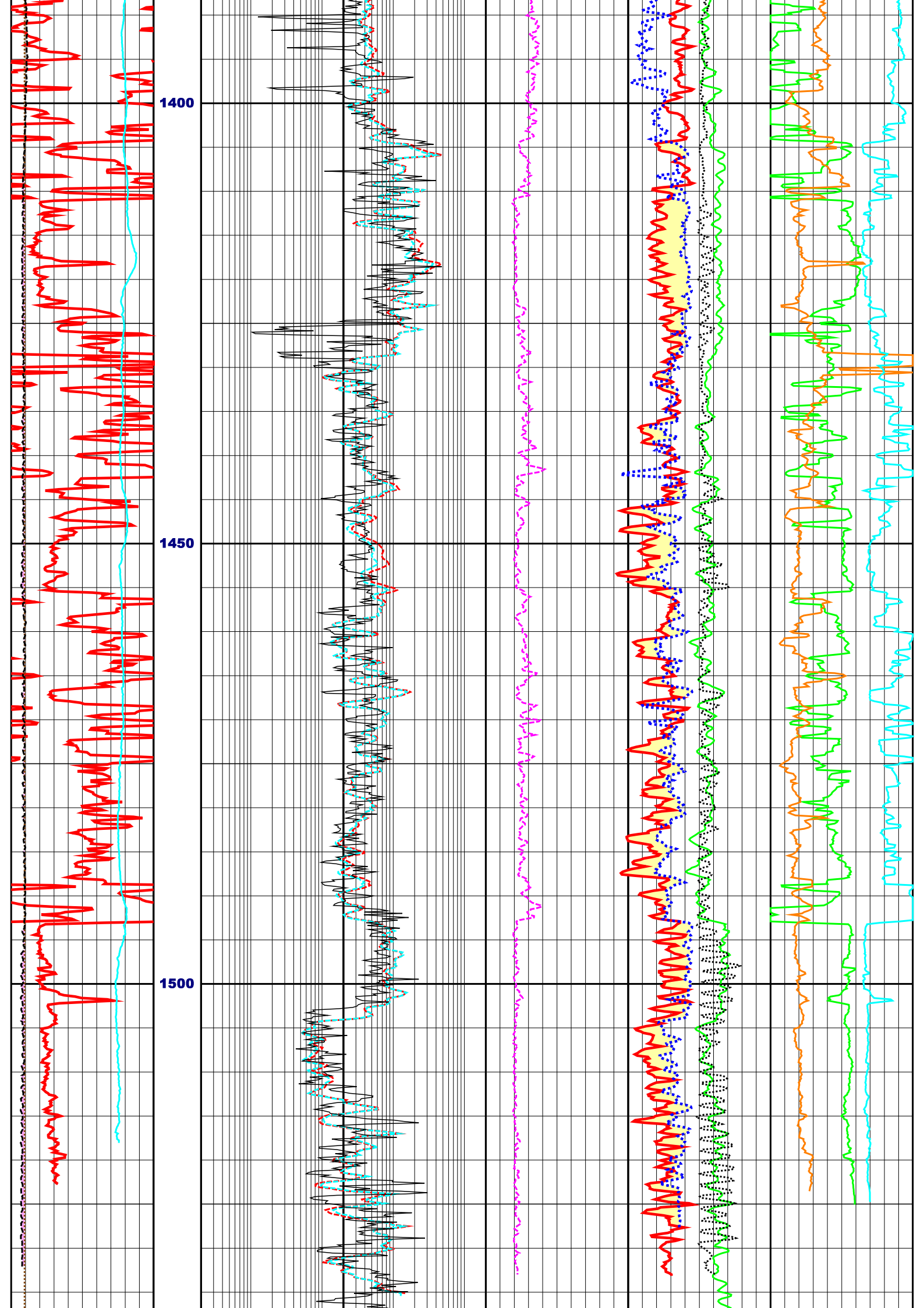












0.0	GR (API)	200.0	DEPTH	0.2	LLD (OHMM)	2000.0	1.95	RHOB (G/C3)	2.95	28.0	THOR (PPM)	-12.0
6.0	BS (INCH)	26.0	M	0.2	LLS (OHMM)	2000.0	0.45	NPHI (V/V)	-0.15	0.0	URAN (PPM)	20.0
6.0	CALI (INCH)	26.0	1:500	0.2	MSFL (OHMM)	2000.0	140.0	DT (US/F)	40.0	-0.14	POTA (V/V)	0.06
-80.0	SP (MV)	20.0					0.0	PEF (B/E)	10.0	-0.25	DRHO (G/C3)	0.25