



ROPER PROJECT

EL's 22478, 22479 & 22480

GROUP ANNUAL REPORT FOR FIFTH YEAR

10-08-2005 to 09-08-2006

Submitted to: NT Dept of Business, Industry & Resource
Development

Submitted by: ERD Pty Ltd *for Mr G Fanning*

Author: IK Johnstone

Date: 20th July 2006

TABLE OF CONTENTS

	Page No.
1. SUMMARY	2
Years 1 and 2 Summary	2
Year 3 Summary	3
Year 4 Summary	5
Year 5 Summary	6
1.1 Environment	6
2. CONCLUSIONS AND RECOMMENDATIONS	6
3. INTRODUCTION	7
4. GEOLOGY	9
4.1 Regional Geology	9
4.2 Project Geology	9
Table 1 - Roper Group Stratigraphy	10
5. PREVIOUS EXPLORATION	11
6. EXPLORATION ACTIVITIES IN YEAR 5	11
6.1 EL 22478	11
Table 2 10	EL 22478 Regional Sill Resource Inferences
6.2 EL 22479	12
Table 3 11	EL 22479 Regional Sills Resource Inferences
5.3 EL 22480	12
6.4 Concurrent Pre-feasibility Studies	12
7. ENVIRONMENT	12
8. REFERENCES	13
List of Figures	13

1. SUMMARY

Exploration Licences 22478, 22479 and 22480 were granted on 9th August 2001 to Mr G Fanning under an Agreement with Exploration & Resource Development Pty Ltd (ERD), a Darwin based resource sector company. ERD Pty Ltd is the designated Project Manager.

The tenements, after the reductions in Year 4 covered approximately 2231 sq km of Roper Group stratigraphy in the Bauhinia Shelf / Arnhem Shelf tectonic elements of the western McArthur Basin, envelope extensively mapped eroded ilmenite-bearing source rocks with considerable potential for large tonnage 'insitu', eluvial and colluvial heavy mineral accumulations. A request for a waiver of reduction at end of year 5 was submitted to the Department as negotiations on the joint venture/sale of ERD and these resources are not fully concluded.

Titaniferous dolerite sills intrude Adelaidean Roper Group sediments at a number of exposed stratigraphic horizons. The dolerites have been subject to prolonged weathering and erosion during the Tertiary and Recent epochs through to modern day wet season cycles.

Year one and two activities included: orientation soil and lag sampling of a number of these sills followed by a comprehensive auger drilling campaign testing the heavy mineral potential of three selected target areas; geological mapping; flora and fauna surveys; airborne and ground based topographic surveys; macro-sampling at BMC and Buka Prospects and commencement of channel sampling of shallow test pit walls on regolithic soils developed on regional dolerite sills. Year three activities were predominantly based on infill drilling, resource estimation by trenching, further sampling of outlying areas. Year 4 activities were dedicated to in-house studies to increase the resource, beneficiation studies to convert the resource to a more saleable product and marketing of the resource to prospective joint venture partners. Year 5 activity mainly centered around a greatly enhanced marketing regime in Australia, Asia and Europe with several parties interested to joint venture or purchase the resource/company and in discussions with the NLC to grant approval for ELA 23385 which abuts the main resource of BUKA. ERD are currently in the final stages of a joint venture/sale agreement with two of the interested parties and a sale/joint venture would result in the resources being further identified and a mining application submitted in year 6. The negotiations with the NLC still appear to ERD to have stalled and this tenement would greatly enhance the resource under the control of ERD.

Years 1 and 2 Summary

- Regional sampling demonstrated two mineralisation regimes; a titanomagnetite dominated HM assemblage liberated from stratigraphically 'older' sills and an ilmenite-rich assemblage from 'younger' sills which have been exposed to longer weathering cycles and relatively mature regolith development.
- Favourable characteristics from chemical and physical property studies of the ilmenites include: insignificant highly susceptibles (titanomagnetite) and trash HM's; angular to euhedral ilmenite grains free from silicate inclusions; consistent TiO₂ content of 50-50.6%; negligible chromium content; low alkalis; acceptable CaO, ZrO₂ and SiO₂; low U+Th and high FeO; bulk of the size ranges are within >100 to 250 microns.

- The auger drilling campaign comprised 2,998 predominantly 100m spaced holes drilled for a cumulative 8,372 metres at three selected prospects; BMC, BBan and Buka.
- Drill indicated resources of approximately 1Mt and 1.5Mt of ilmenite-dominant heavy minerals have been outlined with internal high grade (>5%) ore zones contained within regolithic and pisolitic soils at BMC and Buka South Prospects respectively.
- Processing of representative macro-samples from Buka and BMC reports that the pisolitic samples are easily treatable, contain higher insitu grades, lower slimes and minimal oversize.
- The concentrates produced provide a quality ilmenite product with expected recoveries in excess of 95% and outstanding unit efficiencies due to the limited mineral species present and favourable size relationships between ilmenite and gangue minerals.
- At the Buka South Prospect empirical observations coupled with geology and macro-sample data show an excellent correlation between high grades (>7.5%HM) and remobilised pisolite-abundant soils, moderate grades (>5%HM) with regolithic soils and lower grades corresponding to immaturely transported and deposited gravel/sediment regimes and black soil pondage areas.
- No rare and endangered plant or animal species of conservation significance were encountered within the project area.
- Regional sill investigations commenced on EL 22478 with collection of 77 channel samples from small backhoe excavations from seven selected target areas.

Year 3 Summary

Year 3 activities incorporated infill 25 metre spaced auger drilling at the Buka South Prospect in EL 22478 (3,207 holes for 3,893 metres); continuation of backhoe excavation and channel sampling (77 samples) of a further 4 regional sill targets on EL 22479; excavation and sampling of three shallow trenches at Buka South to collaborate auger intercepts and provide ore body characteristics; an independent resource calculation exercise at Buka South.

Buka South Infill Auger Drilling

In view of the easily treatable and high grade nature of the pisolitic soils at Buka South, a campaign of infill auger drilling on 25 metre drill hole spacing was undertaken internal to the 5%HM contour to test thickness and grade of pisolite ore and determine a measured resource for an initial two to three years proposed production. A total of 3,207 holes were drilled for a cumulative 3,893 metres with an average pisolite thickness of 1.21 metres. Coupled with the existing 100m spaced holes internal to the infill grid a combined 5,430,000 tonnes of mineralised soils was calculated. Average grade reported approximately 6.9% HM yielding 6.76% ilmenite for 367,000 tonnes ilmenite. The drilling indicated partially channelised coarse pisolitic sheet wash soil regimes overlying clay-rich regolith (insitu) soils with variable boulder content developed 'down slope' from shallow bedrock highs (undulating bedrock topography).

Regional Sill Investigations

Following on from year 2, regional sill investigations were completed on EL 22479. Four dolerite regolith targets were sampled with a series of 200m spaced small

backhoe excavations to one metre depths with collection of a representative 15kg channel sample from the pit walls. Sampling was designed to provide, where possible, long axis and cross-sectional data for use in resource inference. Additionally, eight shallow test pits were excavated and sampled on an opportunistic basis where access tracks intercepted previously unsampled regional sill exposures. A total of 77 shallow pits were sampled and were immediately infilled following the sample collection.

The combined 154 samples collected during years 2 and 3 were dispatched to Tristate Research Laboratories in Mildura Victoria for heavy mineral processing. Eight of the tested targets represent stratigraphically 'lower' sills with relatively immature regolith development (insitu boulders) with variably abundant heavy minerals veneers overlying red residual soils. Variably pisolitic red to red-brown regolithic soils with visible magnetic and non-magnetic heavy minerals were encountered to one metre thickness in most of the areas. Two sampled bodies (Buka NE & Buka NNE) represent the prospective 'upper' level sills and reported ilmenite dominant HM assemblages.

The following table summarises the exploration results with a geological resource inference calculated.

Regiona I Sill	Potential Tonnage	Av HM%	Av Mag %	Av Ilmenite %	Slimes %	HM tonnes	Mag tonnes	Ilmenite tonnes
MV1	1,564,000	1.6	1.1	0.5	88	25,024	17,204	7,820
MV2A	4,080,000	2.55	0.25	2.3	74	104,040	10,200	93,840
MV2B	510,000	3.2	2.1	1.1	85	16,320	10,710	5,610
CON 1N	6,446,400	2.4	1.8	0.6	83	154,714	116,035	38,678
CON 1S	3,570,000	8.6	7.1	1.5	88	307,020	253,470	53,550
CON 2	267,750	4.3	3.3	1	77	11,513	8,836	2,678
GOON 1	663,000	0.6	0.3	0.3	90	3,978	1,989	1,989
GOON 2	2,346,000	0.6	0.3	0.3	85	14,076	7,038	7,038
Buka NE	1,602,000	4.45	0.12	4.33	82	71,289	1,922	69,367
Buka NNE	2,787,480	3.6	0.3	3.3	78	100,349	8,362	91,987
BBAN	11,980,000	3.99	2.87	1.13	73	478,002	343,826	135,374
BBAN SW	1,887,000	0.51	0.02	0.49	78	9,624	377	9,246
Mt Caroline	994,500	1.06	0.48	0.58	75	10,542	4,774	5,768
Dooley's E	765,000	3.15	2.5	0.65	65	24,098	19,125	4,973

Buka South Trenching

Shallow trenching incorporating three E-W costeans across a western sheetwash channel at Buka South was undertaken to verify drill indicated pisolite thicknesses by direct measurement and check for concealed roots and boulders which may affect mining. Each of the trenches captured 25m spaced infill drillholes with channel samples collected adjacent to the holes. Additionally 12.5m spaced channel samples were collected to further augment grade variation and increase confidence levels for proven resource calculations. The pisolite thicknesses encountered by the drilling were largely corroborated by the trench exposures. Tree roots are predominantly confined to the upper 40cm of soil profile. Dolerite boulders up to 35cm in diameter

manifest proximal to or within the clayey underlying regolith soils with only minor cobbles and boulders within the sheetwash pisolitic regimes (generally on margins).

The three trenches provide an average of 7.5% HM in the upper metre and 5.1% HM in the lower interval. While the trench results correlate well with the drill indicated measured resource, direct comparison with auger holes adjacent to trench channel samples indicate a 20% increase in auger grades overall.

Independent Resource Estimation

All Buka South auger drilling data was forwarded to Tennent & Isokangas Pty Ltd, Consulting Mining Engineers in Brisbane, for an independent resource estimate using computer assisted Surpac software. An uncut Indicated Resource of 39Mt @ 4.1%HM (3.3%HM adjusted) was calculated for the entire drilled out area and includes 10Mt @ 5.8%HM (adjusted 4.7%HM) in the identified pisolite zone.

The resource estimate largely corroborated ERD's internal estimate of 36Mt @ 3.9%HM (adjusted 3.12%HM).

Pre-feasibility Studies

The scoping study covering conception and costing for mining plant, Project infrastructure, water supply and tailings disposal through to transport mode and corridors linked to bulk storage and loading facilities in Darwin is continuing together with value-add studies including potential for beneficiating ilmenite product to synthetic rutile.

Year 4 Summary

Year 4 activities have concentrated on further studies to beneficiate the resource and in trying to gain further commitment from potential mining partners.

Heubach International

A large scale series of bench tests were conducted on three samples of concentrated ore in India by Heubach International at their Indian operation (Heubach Colour) using their Reptile 96 Synthetic Rutile beneficiation process. (<http://www.heubachinternational.com/>)

These tests involved the transport of 3 tonnes of concentrate to Ankleshwar in India and their subsequent cleaning and batch testing in their reactor pilot plant at Mumbai. The samples tested were from the BBAN, BUKA and BMC project areas and after test work was complete the results were sent to the head office of Heubach in Germany for detailed analysis to compare results.

The results from the batch plant were very promising and ERD is currently evaluating and discussing the importation of this technology to the Northern Territory to beneficiate its ilmenite resource to Synthetic Rutile with a purity of 95 to 96% TiO₂.

Test results and flow diagrams were included in Appendix 1 in the year 4 report

Developing Partners

ERD has been notionally successful in seeking joint development partners and is currently in discussion with Heubach International of Germany to enter into an agreement to import technology for the resource.

Trans Territory Pipeline

ERD has been discussing and conducting field expeditions during the last 12 months to ensure that the Trans Territory Pipeline, if developed, is equitable to the owners, its managers and ERD. This has entailed several discussions at the TTP offices as well as several visits to the areas in question to re-sample, map and assess potential conflict areas.

To date ERD has not secured a satisfactory agreement with the TTP organisation and has delivered a letter to the appropriate Minister objecting to the grant of the pipeline license.

Year 5 Summary

Year 6 activity mainly centered around a greatly enhanced marketing regime in Australia, Asia and Europe with several parties interested to joint venture or purchase the resource and or the company and in discussions with the NLC to grant approval for ELA 23385 which abuts the main resource of BUKA. ERD are currently in the final stages of a joint venture/sale agreement with two of the interested parties and a sale/joint venture would result in the resources being further identified and a mining application submitted in year 6. The negotiations with the NLC still appear to ERD to have stalled and this tenement would greatly enhance the resource under the control of ERD.

ERD is in discussions with two prime organisations to either joint venture or purchase the resource. It is expected that these discussions will conclude favourably within the next six months. Year 6 activities will therefore revolve around mining applications and furthering the resource on adjoining blocks.

1.1 Environment

All field activities adhered to the environmental and safety principles and practices outlined in detail in the Small Mining Management Plan which was accepted by the Department prior to commencement of exploration.

2. Conclusions and Recommendations

Recommendations arising include scaling down product marketing and value-add studies, finalisation of the pursuit of sale/JV opportunities and securing of appropriate 'mining' tenure to progress positive project development opportunities.

3. Introduction

Previously contiguous Exploration Licences 22478 (Roper 1), 22479 (Roper 2) and 22480 (Roper 3) now cover an area of approximately 2231km² on the Urapunga 1:250000 mapsheet SD 53-10 and extend a short way into the southern Mount Marumba (SD5306) sheet after the reductions of these tenements last year. Tenement applications were lodged on 17 March 2000, by ERD Pty Ltd Director Mr G Fanning. The tenements were granted for a period of six years on 10 August 2001 and are scheduled to be transferred in total to Exploration & Resource Development Pty Ltd in the near future. A 12 month waiver of the 50% relinquishment due at completion of tenure year 2 (9th August 2003) on EL's 22478, 22479 and 22480 was requested and accepted by the NT Department of Business, Industry & Development (DBIRD). Following rationalisation of tenure holding, a 50% sub-block relinquishment for all three EL's was forwarded to DBIRD in early July 2004 to leave the following areas.

Title	Original Sub Blocks	Sub Blocks Retained	Sub Blocks Relinquished
EL 22478	429	214	215
EL 22479	475	237	238
EL 22480	441	220	221

It was requested that no further relinquishment occur in year 4 as ERD was in an advanced stage of negotiation with prospective joint venture parties and was further assessing technology solutions. A letter was forwarded to the Mining Register on 01st July 2005 requesting a 12 month waiver which was granted.

The negotiations with prospective joint venture parties are still occurring.

On July 20th 2006 (after a 14 day request for extension of time was granted) application was made for a waiver of relinquishment responsibilities for this year to the Department of Primary Industries, Fisheries and Mines and approved to retain all current blocks in the three EL's.

Title	Original Sub Blocks	Sub Blocks Retained	Sub Blocks Relinquished
EL 22478	429	214	215
EL 22479	475	237	238
EL 22480	441	220	221

The EL's are considered prospective for heavy mineral accumulations (principally ilmenite) in regolithic soils developed on numerous exposed and variably eroded dolerite sills intruding into Proterozoic Roper Group stratigraphy.

The tenements, collectively forming the Roper Project, are centred approximately 80 kilometres east of the township of Mataranka and are dissected in the north and south by the unsealed Central Arnhem and sealed Roper Highways respectively (Figure 1). A station-maintained road is central to the Project Area linking the two highways. All EL's are interspersed with station tracks leading to the main arterial roads. Due to the monsoonal nature of the area the station tracks are well graded every year but are virtually impassable at the height of the monsoon.

The Project Area lies principally within the physiographic province of the Gulf Fall, a dissected terrane from which almost all of the old Tertiary land surfaces have been

eroded. Topography is characterised by broad alluvial valleys between low rubbly hills and prominent strike ridges of resistant Roper Group strata, locally still capped by remnant Tertiary laterite. The flat-floored valleys form part of the vast Roper River floodplain and its associated tributaries (Wilton, Maiwok, Flying Fox, Mainoru) and are largely developed on incompetent shales, fine-grained sediments, volcanics and carbonate rocks. The target dolerite sills are prominent in their deep red soil colour and rounded boulder outcrops. Quite a few of the rivers and creeks are perennial or contain large year round billabongs. The northeastern part of EL 22480 covers a portion of the Wilton River Plateau, a flat-lying Proterozoic sandstone highland.

The principal vegetation regime is open Eucalyptus woodland ranging from sparsely wooded open grassland alluvial and blacksoil plains to densely vegetated lancewood on high ground and steeply sloping areas. The major watercourses are lined with paperbarks and larger Eucalypts. Spinifex grows predominantly on the sandy soils close to outcrop while a peculiar relationship between SE Asian Capoc trees and rubbly dolerite outcrops is evident.

Completed year one, two and three activities included: orientation soil and lag sampling of a number of these sills followed by a comprehensive auger drilling campaign testing the heavy mineral potential of three selected target areas; geological mapping; flora and fauna surveys; airborne and ground based topographic surveys; macro-sampling at BMC and Buka Prospects and channel sampling of shallow test pit walls on regolithic soils developed on regional dolerite sills.

This report outlines exploration activities conducted during tenure year 5 ending 9th August 2006 for EL's 22478, 22479 and 22480.

4. Geology

4.1 Regional Geology

The Project lies in the central-western shelves (Arnhem Shelf and Bauhinia Shelf) of the McArthur Basin. The basin can be viewed as several northerly trending rifts separated by northwest-trending faults and transverse ridges and was subject to repeated cycles of clastic and marine carbonate sedimentation interspersed with volcanic extrusion and sill emplacement (*Tawallah, McArthur and Nathan Groups*) in response to reactivation of older basement structures.

A later, more passive series of sedimentation cycles in response to western basin subsidence occurred with the deposition of suites of blanket quartz sandstones, micaceous siltstones, black shales and glauconitic sandstones (*Roper Group*). Ironstones are prominent on a local stratigraphic level (Roper and Hodgson Iron Deposits). 'A variety of marginal, shallow and deeper marine shelf environments reflect alternating basin-wide sea level rises and falls. Tholeiitic dolerite and gabbro sills were emplaced throughout the Roper group soon after deposition ceased and before regional deformation.'¹

4.2 Project Geology

The Roper Heavy Minerals Project is confined to the Roper Group specifically targeting the ilmenite-bearing dolerite sill horizons and their erosional transport trails. The strata are generally flat lying to undulating although secondary folding and reactivation of older faults result in steepening of dips and stratigraphic dislocation in places (WNW trending Urapunga Tectonic Ridge in the central area and N-S trending Strangeways Fault in the southwest).

The absence of Cambrian flood basalts and only remnant outliers of Cretaceous sandstones, both of which are extensive to the south, west and north of the Project, suggest a significant exposure to uplift and erosion within the area permitting exposure of the underlying Proterozoic sediments and dolerite sills. Extensive deposits of Quaternary to Recent sediments comprising alluvium, colluvium, unconsolidated gravel and sand overlain by mud-rich soils are mapped in the project area and reflect material derived from prolonged weathering and erosion during the Tertiary.

Sills of the Derim Derim Dolerite were emplaced at various stratigraphic horizons (Table 1) from a primary magma source at depth. Extensive lateritised outcrops, subcrops and regolithic soils of the dolerite have been mapped over approximately 1,300km² within the tenements. The dolerite outcrops as low-relief medium to coarse grained, variably altered and weathered ('onion-skin' weathering) rounded boulders. Composition is dominated by plagioclase (40%), clinopyroxene (40%), amphibole (7%), opaques (ilmenite & magnetite 5%) and clay (7%). The associated regolith soils are deep red-purple-brown, clay-rich and contain abundant liberated ilmenite and locally with accessory titanomagnetite, magnetite and haematite grains. In some areas these dolerite sills have only been recently exhumed (higher elevations) and in other instances, larger areas of dolerite sills have been exposed for a longer geological time resulting in pisolitic laterite formation and attendant erosion (lower elevations). These latter areas are considered to have the best potential for higher insitu ilmenite grades in both eluvial and alluvial terrain.

Diamond drillhole intercepts of the dolerite sills show a thickness in the order of 60-70 metres with upper and basal fine-grained chilled margins of 6-10m. Thin section work commissioned by Pacific Oil & Gas in the late 1980's showed the rock to be representative of a small, high-level intrusion of doleritic basic rocks. Ilmenite and magnetite are observed to be primary constituents of the dolerite. A chemical analysis (Cochrane & Edwards, 1960) of fresh dolerite within the Moroak Formation (Prk) near the Sherwin Iron Deposits reported 1.52% TiO₂.

Table 1 - Roper Group Stratigraphy

Stratigraphy	Symbol	Lithology	Comments
<i>(youngest to oldest)</i>			
Chambers River Formation	Prc	Siltstone, mudstone, fine sandstone	Dolerite sill
Bukalorkmi Sandstone	Prl	Quartz sandstone	Dolerite sill
Kyalla Formation	Pry	Siltstone, mudstone, fine sandstone	Dolerite sill
Moroak Formation	Prk	Quartz sandstone	Dolerite sill
Sherwin Member	Prkz	Sand-silt-mudstone & ironstone	Iron ore horizon
Velkerri Formation	Prv	Mudstone, siltstone (organic in part)	Dolerite sill
Bessie Sandstone	Pre	Quartz sandstone	Dolerite sill
Corcoran Formation	Pro	Siltstone lower; with sandstone upper	Dolerite sill
Munyi Member	Prom	Ferruginous sandstone & siltstone	Dolerite sill
Hodgson Sandstone	Prh	Quartz sandstone	Dolerite sill
Jalboi Formation	Prj	Fine sandstone, siltstone	Dolerite sill
Arnold Sandstone	Prx	Quartz sandstone	
Crawford Formation	Prr	Fine sandstone, siltstone	Dolerite sill
Mainoru Formation	Pru	Undifferentiated	Dolerite sill
Showell Member	Prus	Calcareous mudstone,	Dolerite sill
Wooden Duck Member	Pruw	limestone	
Mountain Valley Limestone	Prut	Mudstone-siltstone-sandstone	
Nullawun Member	Prun	Mudstone, limestone	
Limmen Sandstone	Pri	Quartz sandstone	
Mantungula Formation	Prn	Mudstone, fine sandstone, dolostone	
Phelp Sandstone	Prp	Quartz sandstone	

5. Previous Exploration

Summaries of previous exploration were documented and can be referenced in ERD's past Annual Reports (September 2002, September 2003, September 2004 and September 2005).

6. Exploration Activities in Year 5

Year 6 activity mainly centered around a greatly enhanced marketing regime in Australia, Asia and Europe with several parties interested to joint venture or purchase the resource/company and in discussions with the NLC to grant approval for ELA 23385 which abuts the main resource of BUKA. ERD are currently in the final stages of a joint venture/sale agreement with two of the interested parties and a sale/joint venture would result in the resources being further identified and a mining application submitted in year 6. The negotiations with the NLC still appear to ERD to have stalled and this tenement would greatly enhance the resource under the control of ERD.

ERD is currently finalising discussions with two prime organisations to either joint venture or purchase the resource. It is expected that these discussions will conclude favourably within the next six months. Year 6 activities will therefore revolve around mining applications and furthering the resource on adjoining blocks.

Developing Partners

ERD has been notionally successful in seeking joint development partners and is currently in discussion with a Swiss/Chinese consortium and an Australian/Indian group to enter into a joint venture agreement or company/resource sale to develop the resource.

Trans Territory Pipeline

ERD has in the past been discussing and conducting field expeditions to ensure that the Trans Territory Pipeline, if developed, is equitable to the owners, its managers and ERD. This has entailed several discussions at the TTP offices as well as several visits to the areas in question to re-sample, map and assess potential conflict areas.

The Pipeline has ceased to be an issue to ERD with the Gove to Wadeye pipeline project being shelved by Woodside.

6.1 EL 22478

In previous years ERD established a proven resource on EL22478 and had inferred and indicated a further several resources. EL 22478 includes one indicated resource with a 300,000 ton measured resource immediately available. ERD has identified a suitable technology provider that the prospective partners appear eager to utilise.

The following table summarises the resource inferences for sampled sills. More work needs to be done on these inferred resources during year 6 to identify small mining methodologies.

Table 2 EL 22478 Regional Sill Resource Inferences

	Regional Sill	Tonnage	Av HM%	Av Mag %	Av Ilmenite %	Slimes %	HM tonne
5th Annual EL's 22478.22479 & 22480.pdf	Page 10 MV1	1,564,000	1.6	1.1	0.5	88	25,02
	MV2A	4,080,000	2.55	0.25	2.3	74	104,0
	MV2B	510,000	3.2	2.1	1.1	85	16,32

6.2 EL 22479

As for EL 22478, regional sill investigations were completed on EL 22479 with one indicated resource and several inferred resources identified. ERD has identified a suitable technology provider that the prospective partners appear eager to utilise.

The following table summarises the resource inferences for sampled sills. More work needs to be done on these inferred resources during year 6 to identify small mining methodologies.

Table 3 EL 22479 Regional Sills Resource Inferences

Regional Sill	Tonnage	Av HM%	Av Mag %	Av Ilmenite %	Slimes %	HM tonnes	Mag tonnes	Ilmenite tonnes
BBAN	11,980,000	3.99	2.87	1.13	73	478,002	343,826	135,374
BBAN SW	1,887,000	0.51	0.02	0.49	78	9,624	377	9,246
Mt Caroline	994,500	1.06	0.48	0.58	75	10,542	4,774	5,768
Dooley's E	765,000	3.15	2.5	0.65	65	24,098	19,125	4,973

5.3 EL 22480

Regional sill investigations have not been completed on EL 22480 as ERD have concentrated on a technological solution for its known resources.

EL22480 is believed to sustain a further inferred resource of some 1,500,000 tonnes of heavy minerals and ERD would fully investigate this during the year 2006. While ERD is in the process of establishing a suitable technology provider it is requested that no further reduction of the EL occurs.

6.4 Concurrent Pre-feasibility Studies

Investigations are continuing on potential mining, processing and project infrastructure costing together with assessment of ilmenite product for value-add beneficiation to synthetic rutile. Data and agreements are still awaited and will be incorporated into a Year 6 feasibility study report.

7. Environment

All field activities adhered to the environmental and safety principles and practices outlined in detail in the Small Mining Management Plan which was accepted by the Department prior to commencement of exploration. Selected photographs of field activities were included in previous reports.

8. References

Abbott ST, Sweet IP, Plumb KA, Young DN, Cutovinos A, Ferenzi PA, Brakel A & Pietsch BA, 2001. Roper Region: Urapunga and Roper River Special, Northern Territory (Second Edition), 1:250 000 Geological Map Series Explanatory Notes, SD 53-10 & SD 53-11. Northern Territory Geological Survey

List of Figures

Figure 1 Roper Project Location Plan
Figure 2 Indicated, Inferred and Measured Resources 2005/2006

Figure 1: EL's 22478,22479,22480 Location Plan

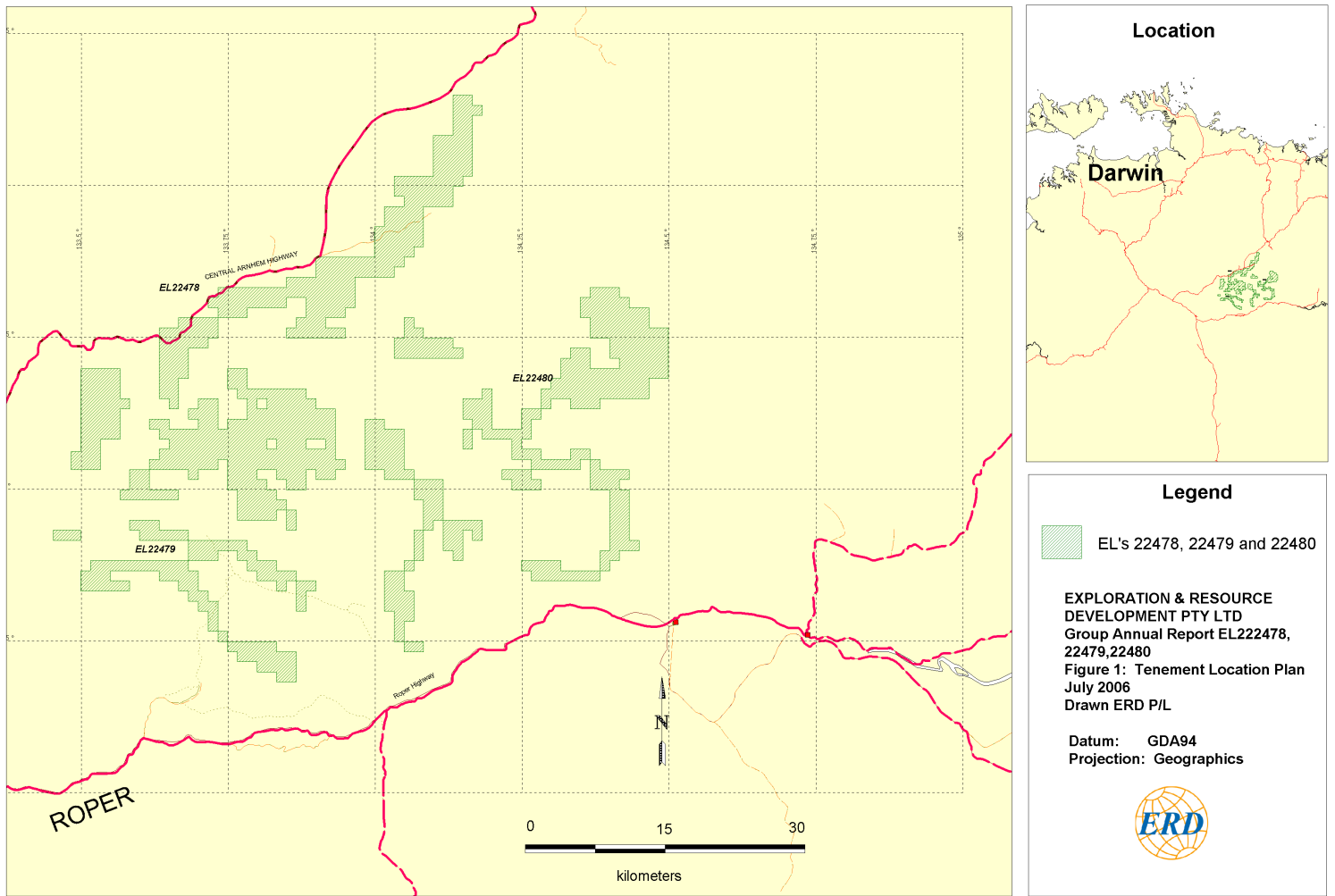


Figure 2. Indicated, Inferred and Measured Resources of ELs 22478, EL22479 and EL 22480 2005

