

Schlumberger
 PALM VALLEY #2
 NGS PLAYBACK 1/200
 RUN #1 SUITE #3
 PROLOG 1

COUNTRY	AUSTRALIA	FIELD	PALM VALLEY	WELL	PALM VALLEY #2
LOCATION	CENTRAL AUSTRALIA	STATE	AUSTRALIA	COMPANY	MAGELLAN PETROLEUM
LOG MEASURED FROM	HBS	LOG INTERVAL	1500.0-1500.0	DATE	24/07/96 14:50
LOG MEASURED TO	HBS	LOG INTERVAL	1500.0-1500.0	TIME	13:38:38.99 E
LOG MEASURED BY	HBS	LOG INTERVAL	1500.0-1500.0	DRILLER	HITWELL DHC
LOG MEASURED ON	HBS	LOG INTERVAL	1500.0-1500.0	LOGGING UNIT	HITWELL DHC
LOG MEASURED FOR	HBS	LOG INTERVAL	1500.0-1500.0	LOGGING UNIT	HITWELL DHC
LOG MEASURED BY	HBS	LOG INTERVAL	1500.0-1500.0	LOGGING UNIT	HITWELL DHC
LOG MEASURED ON	HBS	LOG INTERVAL	1500.0-1500.0	LOGGING UNIT	HITWELL DHC
LOG MEASURED FOR	HBS	LOG INTERVAL	1500.0-1500.0	LOGGING UNIT	HITWELL DHC
LOG MEASURED BY	HBS	LOG INTERVAL	1500.0-1500.0	LOGGING UNIT	HITWELL DHC

The well name, location and borehole reference data were furnished by the customer

All interpretations are opinions based on inferences from electrical or other measurements and we cannot, and do not guarantee the accuracy or correctness of any interpretations, and we shall not, except in the case of gross or willful negligence on our part, be liable or responsible for any loss, costs, damages or expenses incurred or sustained by anyone resulting from any interpretations made by any of our officers, agents or employees. These interpretations are also subject to Clause 4 of our General Terms and Conditions as set out in our current Price Schedule.

Run No.	1 SUITE 3
Service Order No.	
Drilling Fluid Level	
Salinity	
Rm @ BHT	@ 67.2 DEGC
Logging Speed	800.0 FHR
EQUIPMENT DATA	
Tool Number 1	TCM AB 244
Tool Number 2	DFC 6714
Tool Number 3	NSC 782
Tool Number 4	PDH 2824
Tool Number 5	PGD 2822
Tool Number 6	GSR J 6607
Tool Number 7	NGC C 847
Tool Number 8	NGC A 860
Tool Number 9	GSR Y 161
Tool Number 10	TCC B 472
Tool Number 11	SGC SA 1279
Tool Number 12	WHE 10K

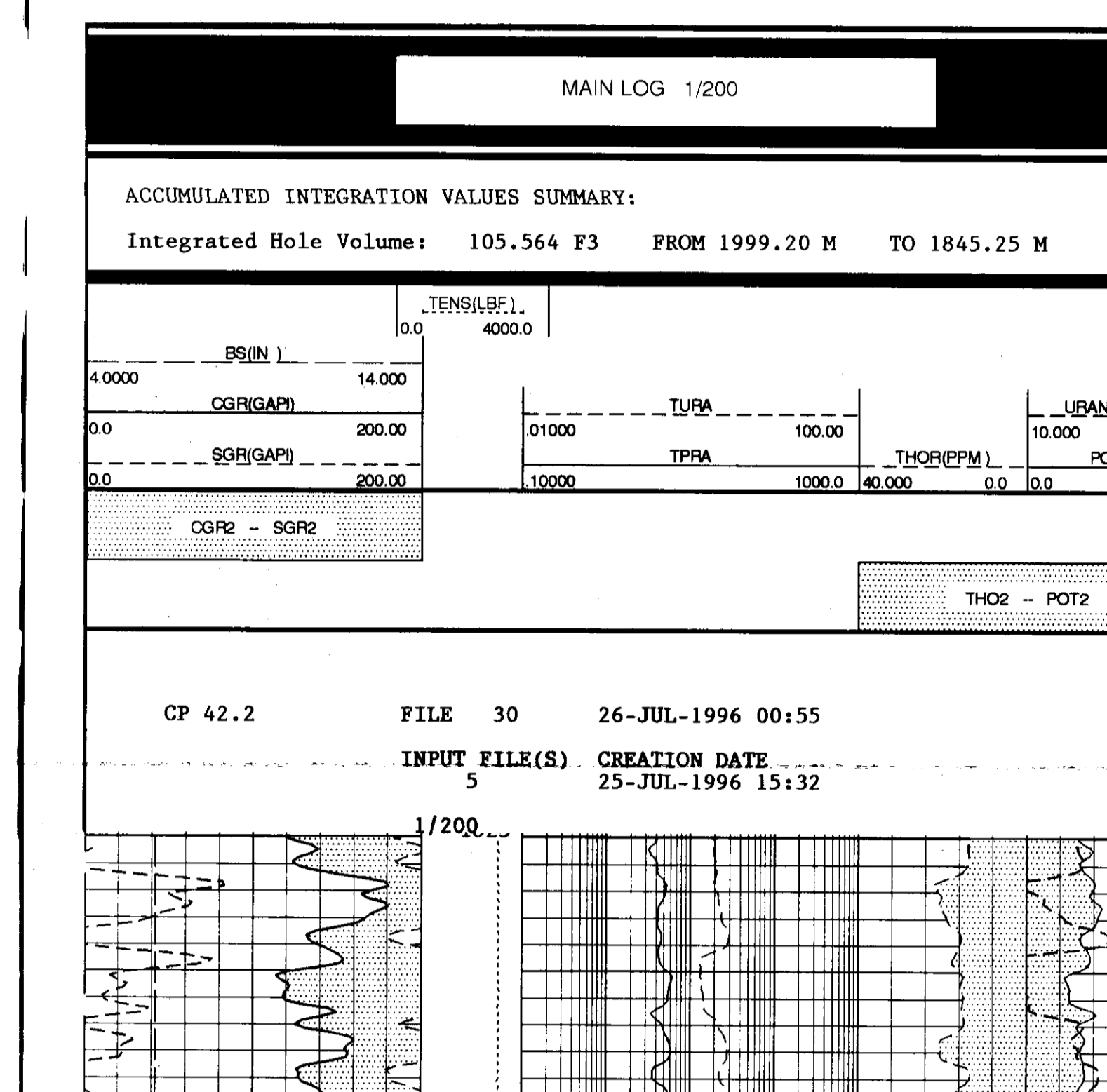
REMARKS:
SEE REMARKS BELOW

LOG OPERATION REMARKS

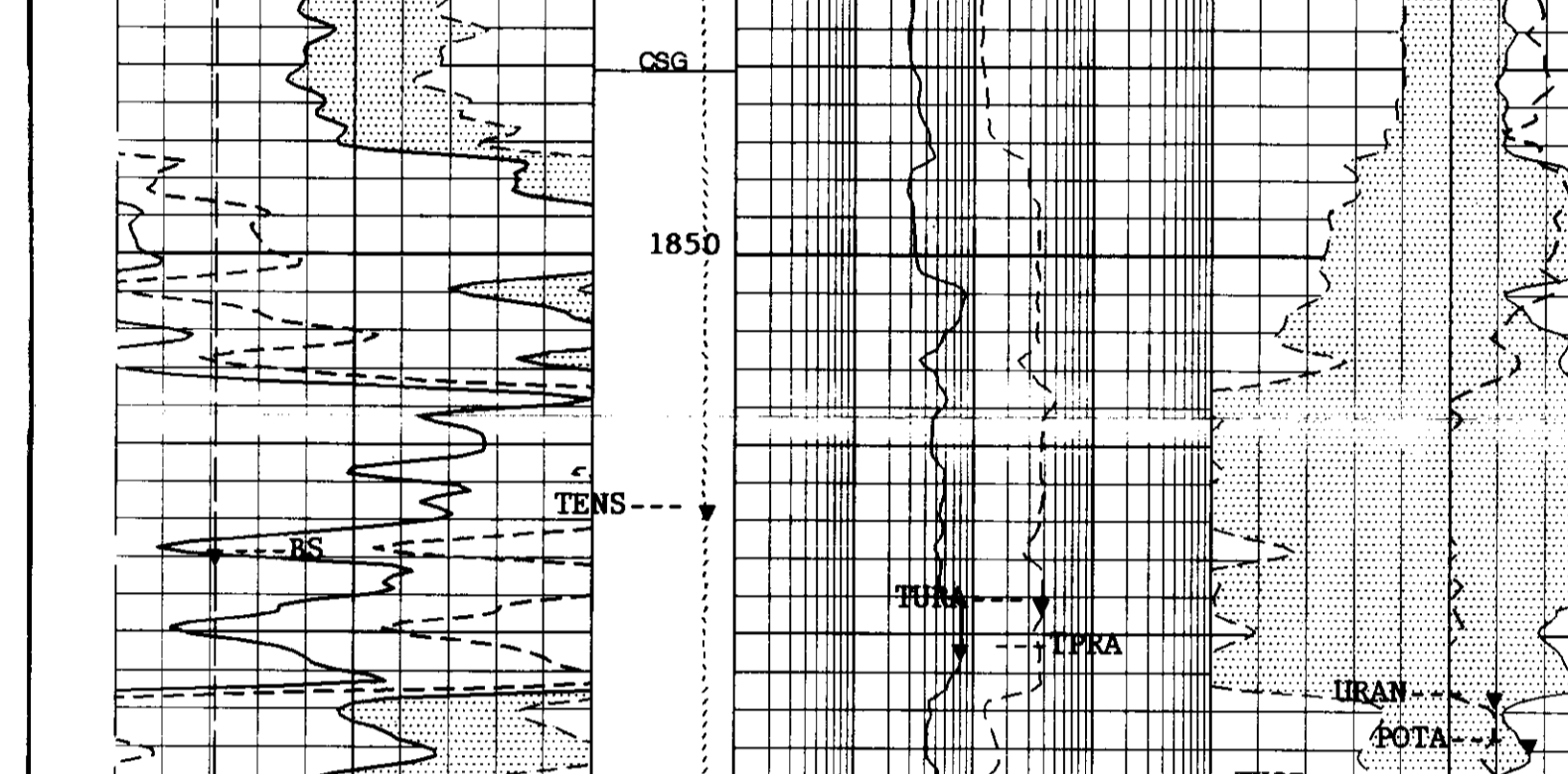
REMARKS:
OPEN HOLE LOGS PERFORMED IN GAS FILLED HOLE UNDER PRESSURE, SIWHP = 1472 PSI OPERATION PERFORM WITH SHUDDING UNIT AND WHE. ESTIMATED DOWNHOLE GAS DENSITY 0.07 G/C3. HOLE COMPLETELY DRY TO TD.
SECOND CR (SGTL) USED IN LOGGING TO PROVIDE ADDITIONAL TOOL WEIGHT WHILE LOGGING UNDER PRESSURE.
7" 23 LB/F CASING IN PLACE. ID = 6.366".
HITWELL DOWNHOLE VIDEO CAMERA (DHCV) RUN AS SUITE #1 TWO PASSES WERE PERFORMED. PASS #1 WAS PERFORMED WITH A TUBE LIGHT SOURCE (COMPASS ATTACHED). PASS #2 WAS RUN WITH A RING LIGHT SOURCE.
DATA WAS RECORDED ON VIDEO TAPE CASSETTES; TAPE #1 WAS USED FOR THE TUBE LIGHT PASS AND TAPE #2 FOR THE RING LIGHT PASS.

TOOL SKETCH

LOGGING TOOL STRING SKETCH

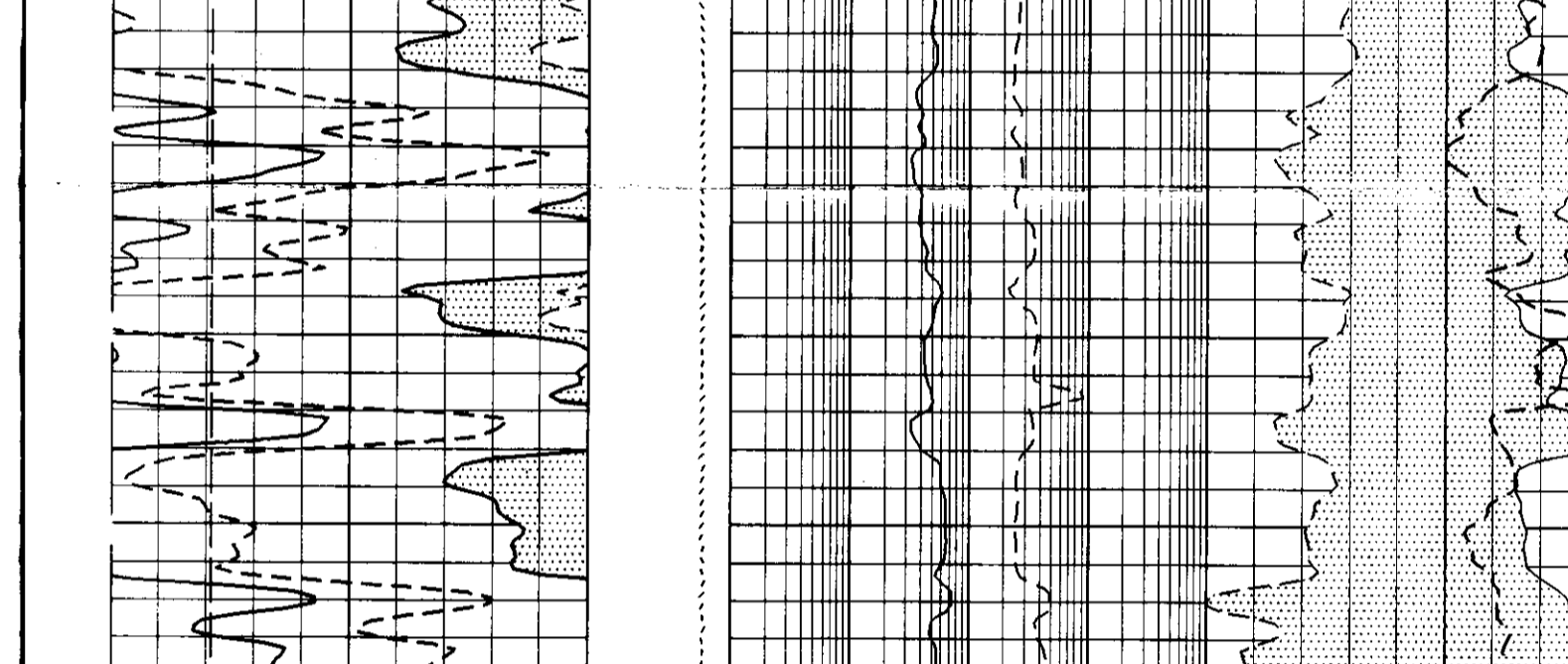


WELL SKETCH

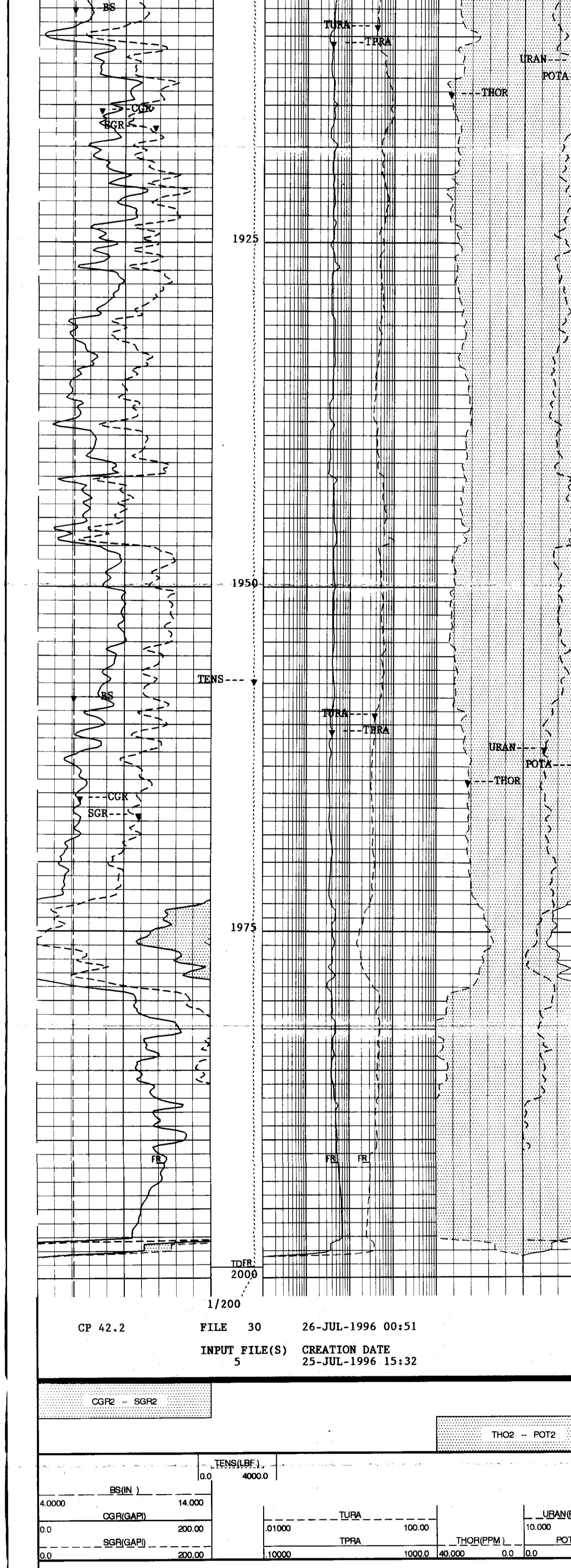


MAIN LOG 1/200

ACCUMULATED INTEGRATION VALUES SUMMARY:
Integrated Hole Volume: 105.564 F3 FROM 1999.20 M TO 1845.25 M



CP 42.2 FILE 30 26-JUL-1996 00:55
INPUT FILE(S) 5 CREATION DATE 25-JUL-1996 15:32



CP 42.2 FILE 30 26-JUL-1996 00:51
INPUT FILE(S) 5 CREATION DATE 25-JUL-1996 15:32

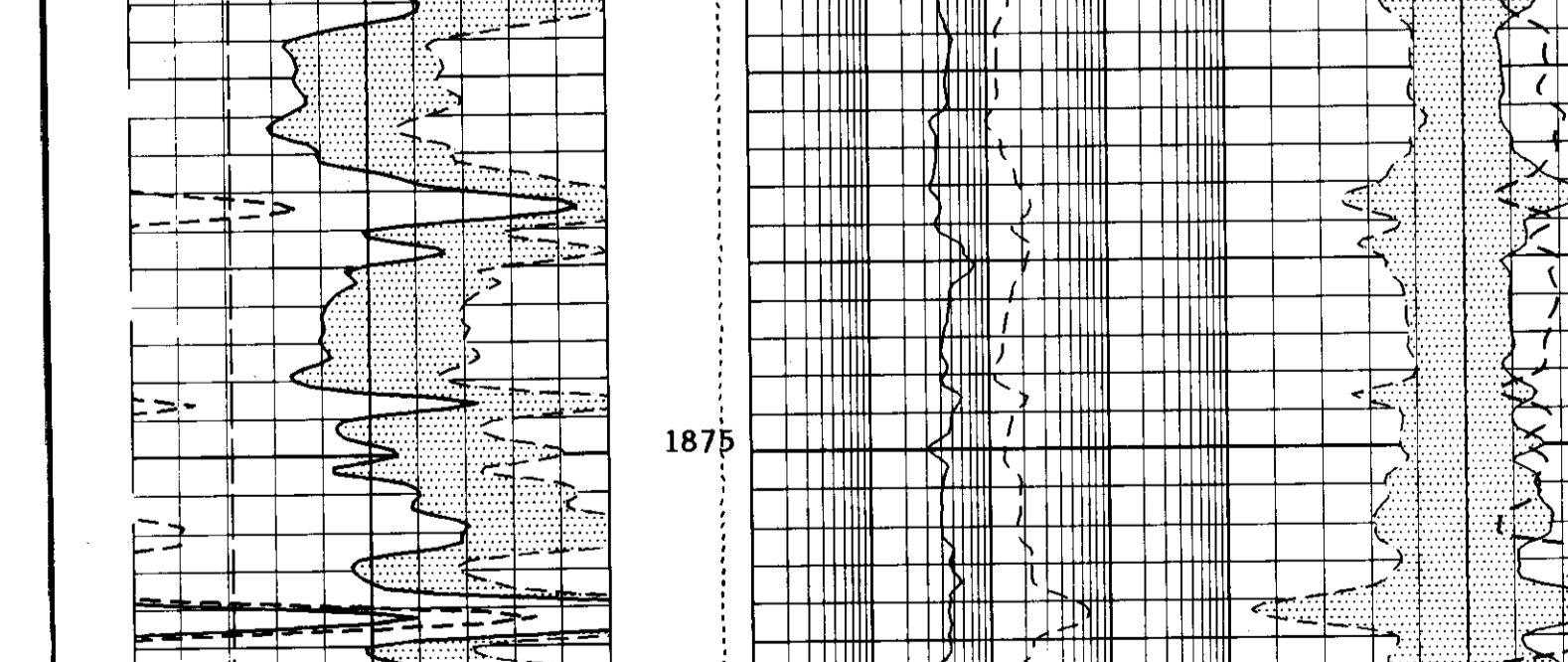
SENSOR MEASURE POINT TO TOOL ZERO
LDTC .81 METER SCITL 9.30 METER
NGTC 7.52 METER DTT -.28 METER

PARAMETERS

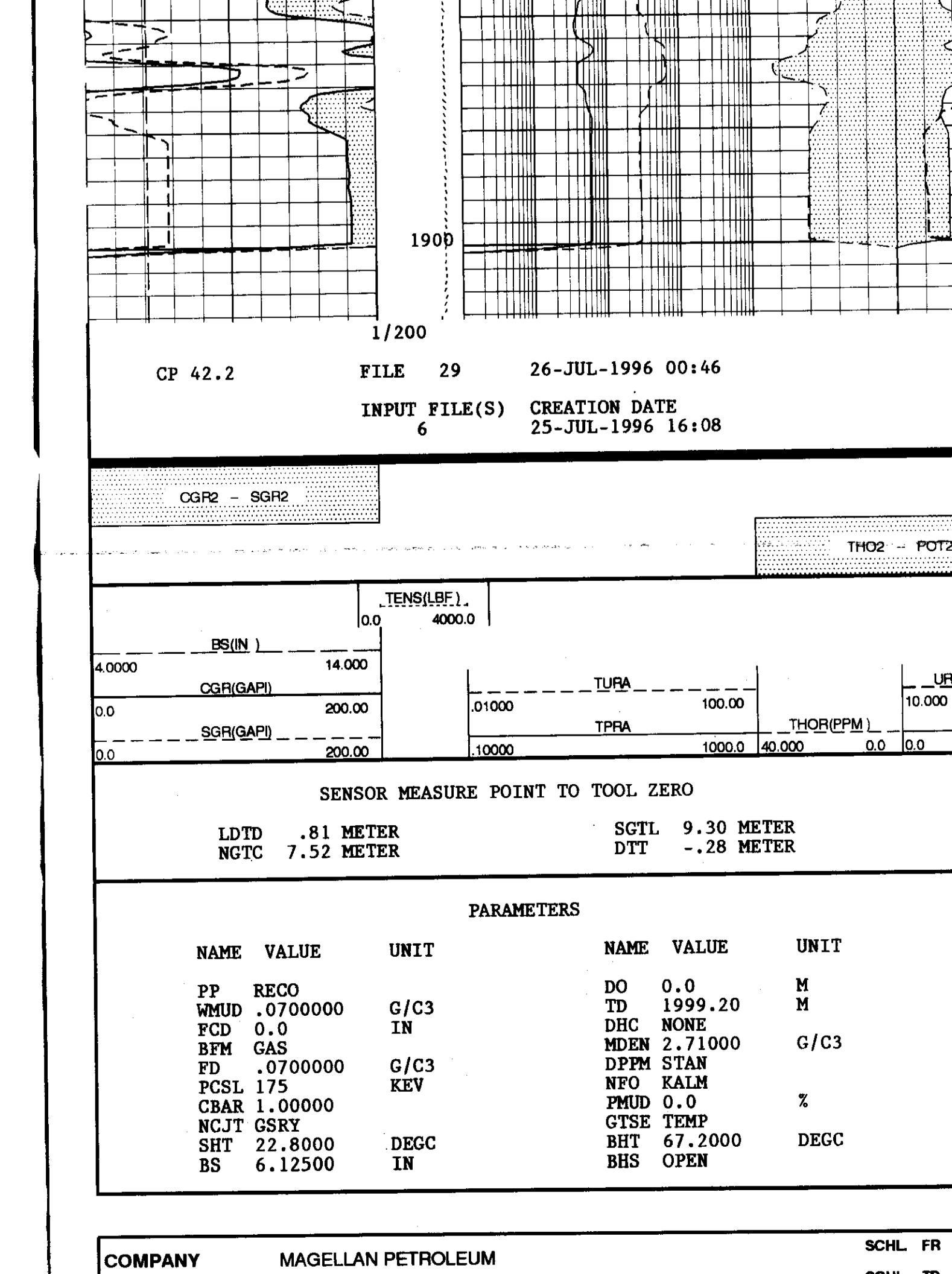
PP RECO		DO	0.0	M
WMUD .0700000	G/C3	TD	1999.20	M
PCD 0.0	IN	DHC	NONE	
BFM GAS		MDEN	2.71000	G/C3
FD .0700000	G/C3	DPPM	STAN	
PCSL 175	KEV	NFO	KALM	
CBAR 1.00000		FMUD	0.0	%
NGCT GSRY		GTSE	TEMP	
SHT 22.8000	DEGC	BHT	67.2000	DEGC
BS 6.12500	IN	BHS	OPEN	

REPEAT SECTION 1/200

ACCUMULATED INTEGRATION VALUES SUMMARY:
Integrated Hole Volume: 38.5375 F3 FROM 1903.02 M TO 1845.25 M



CP 42.2 FILE 29 26-JUL-1996 00:48
INPUT FILE(S) 6 CREATION DATE 25-JUL-1996 16:08



CP 42.2 FILE 29 26-JUL-1996 00:48
INPUT FILE(S) 6 CREATION DATE 25-JUL-1996 16:08

SENSOR MEASURE POINT TO TOOL ZERO
LDTD .81 METER SCITL 9.30 METER
NGTC 7.52 METER DTT -.28 METER

PARAMETERS

PP RECO		DO	0.0	M
WMUD .0700000	G/C3	TD	1999.20	M
PCD 0.0	IN	DHC	NONE	
BFM GAS		MDEN	2.71000	G/C3
FD .0700000	G/C3	DPPM	STAN	
PCSL 175	KEV	NFO	KALM	
CBAR 1.00000		FMUD	0.0	%
NGCT GSRY		GTSE	TEMP	
SHT 22.8000	DEGC	BHT	67.2000	DEGC
BS 6.12500	IN	BHS	OPEN	

COMPANY	MAGELLAN PETROLEUM	SCHL FR	1999.4 M
WELL	PALM VALLEY #2	SCHL TD	1999.2 M
FIELD	PALM VALLEY	DRLR TD	1999.2 M
COUNTRY	AUSTRALIA	Elev:	KB 914.4 M
		DF	
		QL	908.2 M

Schlumberger
PALM VALLEY #2
NGS PLAYBACK 1/200
RUN #1 SUITE #3