

28704 D
PALM VALLEY #2
LDL-NGS 1/500
RUN #1 SUITE #3

Schlumberger

COMPANY	MAGELLAN PETROLEUM	WELL	PALM VALLEY #2
FIELD	PALM VALLEY	COUNTRY	AUSTRALIA
STATE	N.T.	LOCATION	CENTRAL AUSTRALIA
API SERIAL NO.	132 98 86 88 E	Other Services:	DIL-GR HITWELL-DHC
PERMITS	24 00 09 1 4 S	LOG MEASURED FROM	RKS
LOG MEASURED FROM	RKS	DATE	25-JUL-1996
DATE	25-JUL-1996	DEPTH DRILLER	1 SUITE 3
DEPTH DRILLER	1 SUITE 3	DEPTH LOGGER (SCH)	1999.2 M
DEPTH LOGGER (SCH)	1999.2 M	BIM. LOG INTERVAL	1998.4 M
BIM. LOG INTERVAL	1998.4 M	CASING-DRILLER	7 @ 1845.3 M
CASING-DRILLER	7 @ 1845.3 M	BIT SIZE	8 1/2" @ 1989.2 M
BIT SIZE	8 1/2" @ 1989.2 M	TYPE FLUID IN HOLE	ANI
TYPE FLUID IN HOLE	ANI	DENS.	
DENS.		PH	
PH		Source of Sample	
Source of Sample		Rmt @ Meas. Temp.	@
Rmt @ Meas. Temp.	@	Rmt @ Meas. Temp.	@
Rmt @ Meas. Temp.	@	Source: Rmt	@
Source: Rmt	@	Rmt @ BHT	@ 67.2 DEGC
Rmt @ BHT	@ 67.2 DEGC	Logger on Bottom	15:00 25:07:46
Logger on Bottom	15:00 25:07:46	Max. Rec. Temp.	67.2 DEGC
Max. Rec. Temp.	67.2 DEGC	ESULB	0
ESULB	0	Location	CEA
Location	CEA	Recorded By	MALOSI HEGEDUS
Recorded By	MALOSI HEGEDUS	Witnessed By	MARTIN BERRY
Witnessed By	MARTIN BERRY		

The well name, location and borehole reference data were furnished by the customer.

All interpretations are opinions based on inferences from electrical or other measurements and we cannot, and do not guarantee the accuracy or correctness of any interpretations, and we shall not, except in the case of gross or willful negligence on our part, be liable or responsible for any loss, costs, damages or expenses incurred or sustained by anyone resulting from any interpretations made by any of our officers, agents or employees. These interpretations are also subject to Clause 4 of our General Terms and Conditions as set out in our current Price Schedule.

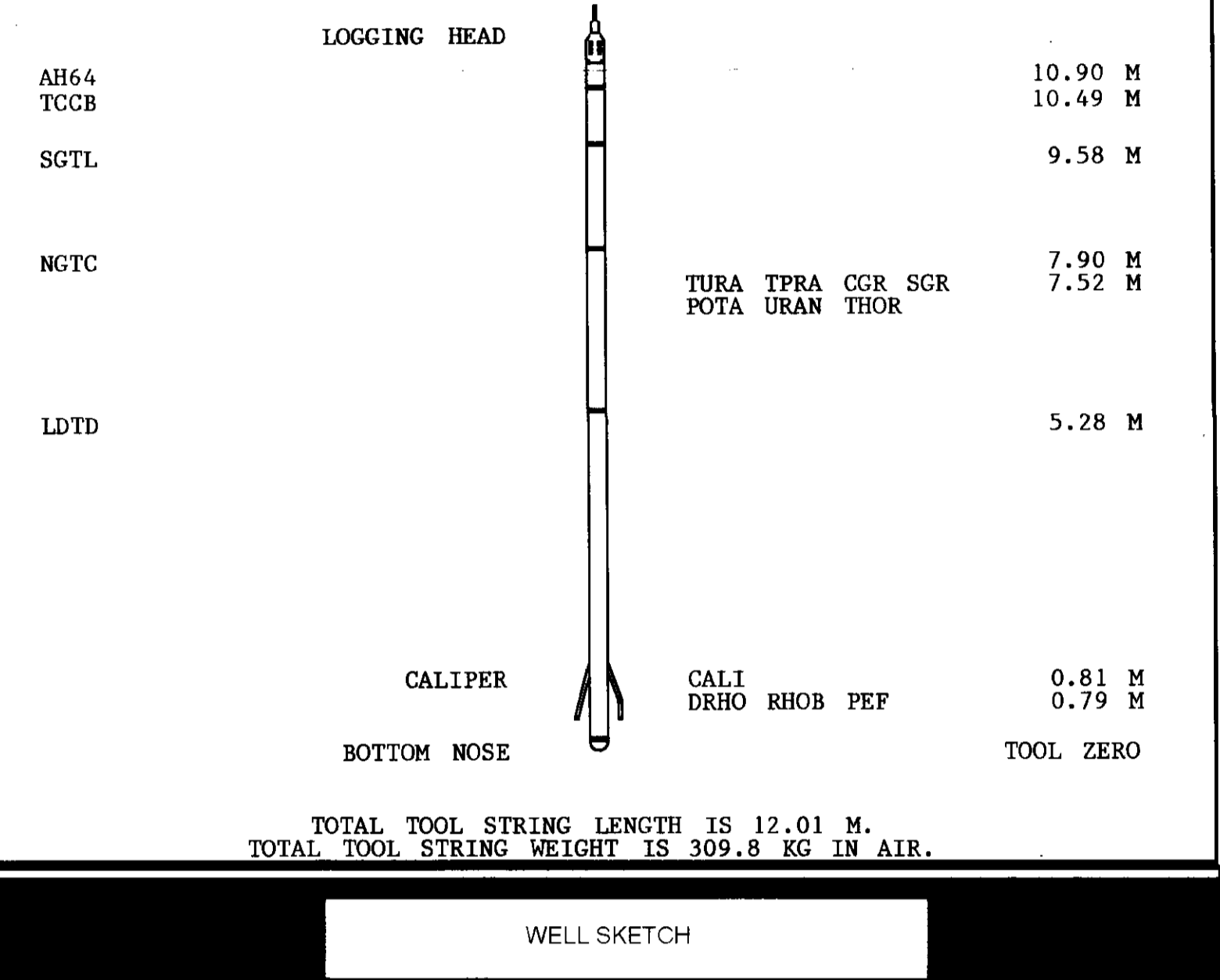
Run No.	1 SUITE 3
Service Order No.	
Drilling Fluid Level	
Salinity	
Rmt @ BHT	@ 67.2 DEGC
Rmc @ BHT	@ 67.2 DEGC
Logging Speed	900.0 F/HR
EQUIPMENT DATA	
Tool Number 1	TCM-AB 244
Tool Number 2	DRS-C 6714
Tool Number 3	NSC-E 762
Tool Number 4	PDH-L 2824
Tool Number 5	PGD-G 2802
Tool Number 6	GSR-J 6807
Tool Number 7	NGC-C 947
Tool Number 8	NGDA 980
Tool Number 9	GSR-Y 181
Tool Number 10	TCC-B 472
Tool Number 11	SGC-SA 1279
Tool Number 12	WHE-10K
REMARKS:	SEE REMARKS BELOW

LOG OPERATION REMARKS

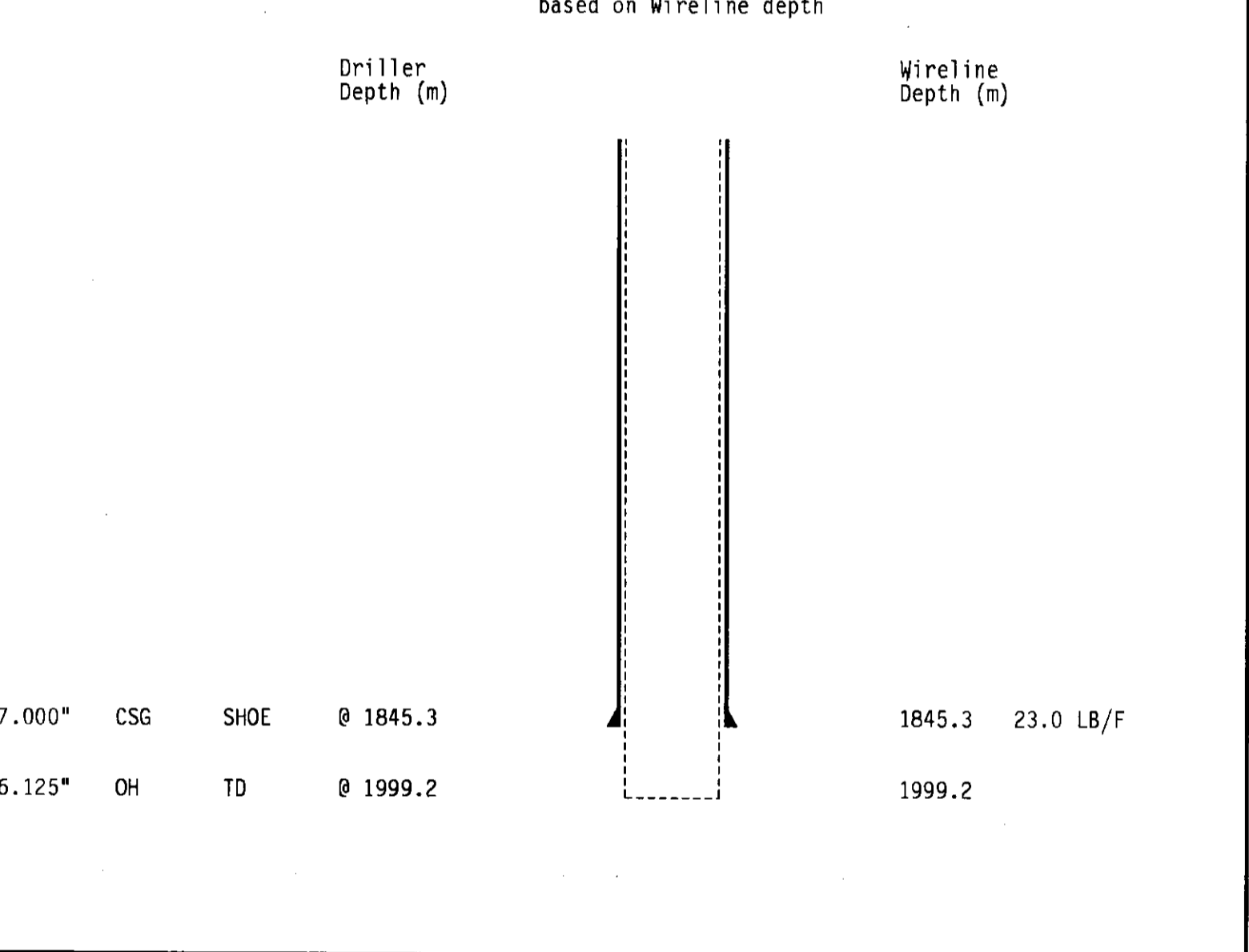
REMARKS:
 OPEN HOLE LOGS PERFORMED IN GAS FILLED HOLE UNDER PRESSURE, SIWHP = 1472 PSI. OPERATION PERFORM WITH SNUBBING UNIT AND WHE. ESTIMATED DOWNHOLE GAS DENSITY 0.07 G/C3. HOLE COMPLETELY DRY TO TD.
 SECOND GR (SGTL) USED IN STRING TO PROVIDE ADDITIONAL TOOL WEIGHT WHILE LOGGING UNDER PRESSURE. 7" 23 LB/F CASING IN PLACE, ID = 6.366".
 HITWELL DOWNHOLE VIDEO CAMERA (DHCV) RUN AS SUITE #1 TWO PASSES WERE PERFORMED. PASS #1 WAS PERFORMED WITH A TUBE LIGHT SOURCE (COMPASS ATTACHED). PASS #2 WAS RUN WITH A RING LIGHT SOURCE.
 DATA WAS RECORDED ON VIDEO TAPE CASSETTES; TAPE #1 WAS USED FOR THE TUBE LIGHT PASS AND TAPE #2 FOR THE RING LIGHT PASS.

TOOL SKETCH

LOGGING TOOL STRING SKETCH



WELL SKETCH

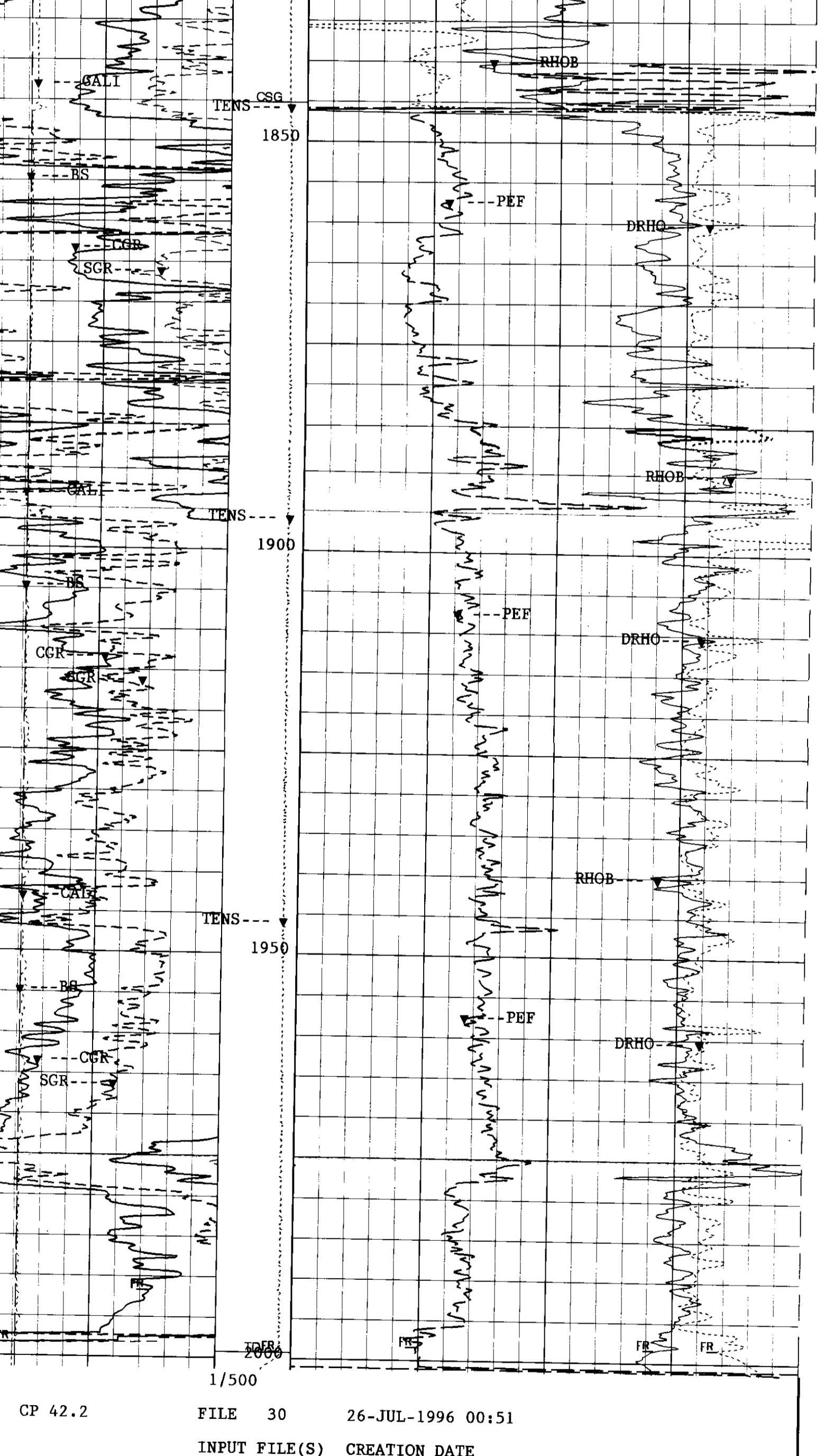


MAIN LOG 1/500

ACCUMULATED INTEGRATION VALUES SUMMARY:
 Integrated Hole Volume: 105.564 F3 FROM 1999.20 M TO 1845.25 M

TENS(LBF.)	0.0	4000.0		
BDQC	10,000	0.0		
CALI(IN.)	4.0000	14.000		
BS(IN.)	4.0000	14.000		
CGR(GAP)	0.0	200.00	RHOB(G/C3)	1.9500
SGR(GAP)	0.0	200.00	DRHO(G/C3)	2.9500
BDQC - Z2				25000

CP 42.2 FILE 30 26-JUL-1996 00:55
 INPUT FILE(S) 5 CREATION DATE 25-JUL-1996 15:32



CP 42.2 FILE 30 26-JUL-1996 00:51
 INPUT FILE(S) 5 CREATION DATE 25-JUL-1996 15:32

TENS(LBF.)	0.0	4000.0		
BDQC	10,000	0.0		
CALI(IN.)	4.0000	14.000		
BS(IN.)	4.0000	14.000		
CGR(GAP)	0.0	200.00	RHOB(G/C3)	1.9500
SGR(GAP)	0.0	200.00	PEF	10.000
BDQC - Z2			DRHO(G/C3)	25000

SENSOR MEASURE POINT TO TOOL ZERO
 LDTD .81 METER SGTL 9.30 METER
 NGTC 7.52 METER DTT -.28 METER

NAME	VALUE	UNIT	NAME	VALUE	UNIT
PP	RECO		DO	0.0	M
WMUD	.0700000	G/C3	ID	1999.20	M
FCD	0.0	IN	DHC	NONE	
BFG	GAS		MDEN	2.71000	G/C3
FD	.0700000	G/C3	DPPM	STAN	
PCSL	175	KEV	NFO	KALM	
CBAR	1.00000		PMUD	0.0	%
NCJT	GSRY		GTSE	TEMP	
SHT	22.8000	DEGC	BHT	67.2000	DEGC
BS	6.12500	IN	BHS	OPEN	

COMPANY	MAGELLAN PETROLEUM	SCHL. FR	1998.4 M
WELL	PALM VALLEY #2	SCHL. TD	1999.2 M
FIELD	PALM VALLEY	DRLR. TD	1999.2 M
COUNTRY	AUSTRALIA	STATE	N.T.
		Elev:	KB 914.4 M
		DF	DF
		GL	909.2 M

PALM VALLEY #2
LDL-NGS 1/500
RUN #1 SUITE #3

Schlumberger