

Schlumberger
PALM VALLEY #2
DIL-GR 1/500
RUN #1 SUITE #2

COUNTRY	AUSTRALIA	STATE	N.T.
FIELD	PALM VALLEY	WELL	PALM VALLEY #2
LOCATION	CENTRAL AUSTRALIA	COMPANY	MAGELLAN PETROLEUM
WELL	PALM VALLEY #2	LOCATION	CENTRAL AUSTRALIA
COUNTRY	AUSTRALIA	APN SERIAL NO.	132 98 98 95 E
STATE	N.T.	SECT.	914.4 M
		TWP.	0.0 M
		RANGE	914.4 M
		Other Services:	LDL-NS
			HITWELL-DHC
			GL 909.2 M
Permit No.	MSL	Log Measured From	RKB
Drilling Measured From	RKB	Drilling Measured From	RKB
Date	25-JUL-1996	Run No.	1 SUITE 2
Depth Driller	1899.2 M	Depth Logger (Schl.)	1899.2 M
Run Log Interval	1898.8 M	Top Log Interval	1790.0 M
Casing-Driller	1845.3 M	Casing-Logger	1845.3 M
Bit Size	8 1/2"	Type Fluid In Hole	AIR
Dens. /Visc.		PH	
PH		PH	
Source of Sample		Source of Sample	
Rm @ Meas. Temp.		Rm @ Meas. Temp.	
Rmc @ Meas. Temp.		Rmc @ Meas. Temp.	
Source: Rmf / Rmc		Source: Rmf / Rmc	
Rm @ BHT		Rm @ BHT	
Circulation Ended		Circulation Ended	
Logger on Bottom	11:14:25-07:96	Logger on Bottom	11:14:25-07:96
Max. Rec. Temp.	67.2 DEGC	Max. Rec. Temp.	67.2 DEGC
Equip. Location	8394	Equip. Location	8394
Recorded By	MARCUS HEGEDUS	Recorded By	MARCUS HEGEDUS
Witnessed By	MARTIN BERRY	Witnessed By	MARTIN BERRY

The well name, location and borehole reference data were furnished by the customer.

All interpretations are opinions based on inferences from electrical or other measurements and we cannot, and do not guarantee the accuracy or correctness of any interpretations, and we shall not, except in the case of gross or willful negligence on our part, be liable or responsible for any loss, costs, damages or expenses incurred or sustained by anyone resulting from any interpretations made by any of our officers, agents or employees. These interpretations are also subject to Clause 4 of our General Terms and Conditions as set out in our current Price Schedule.

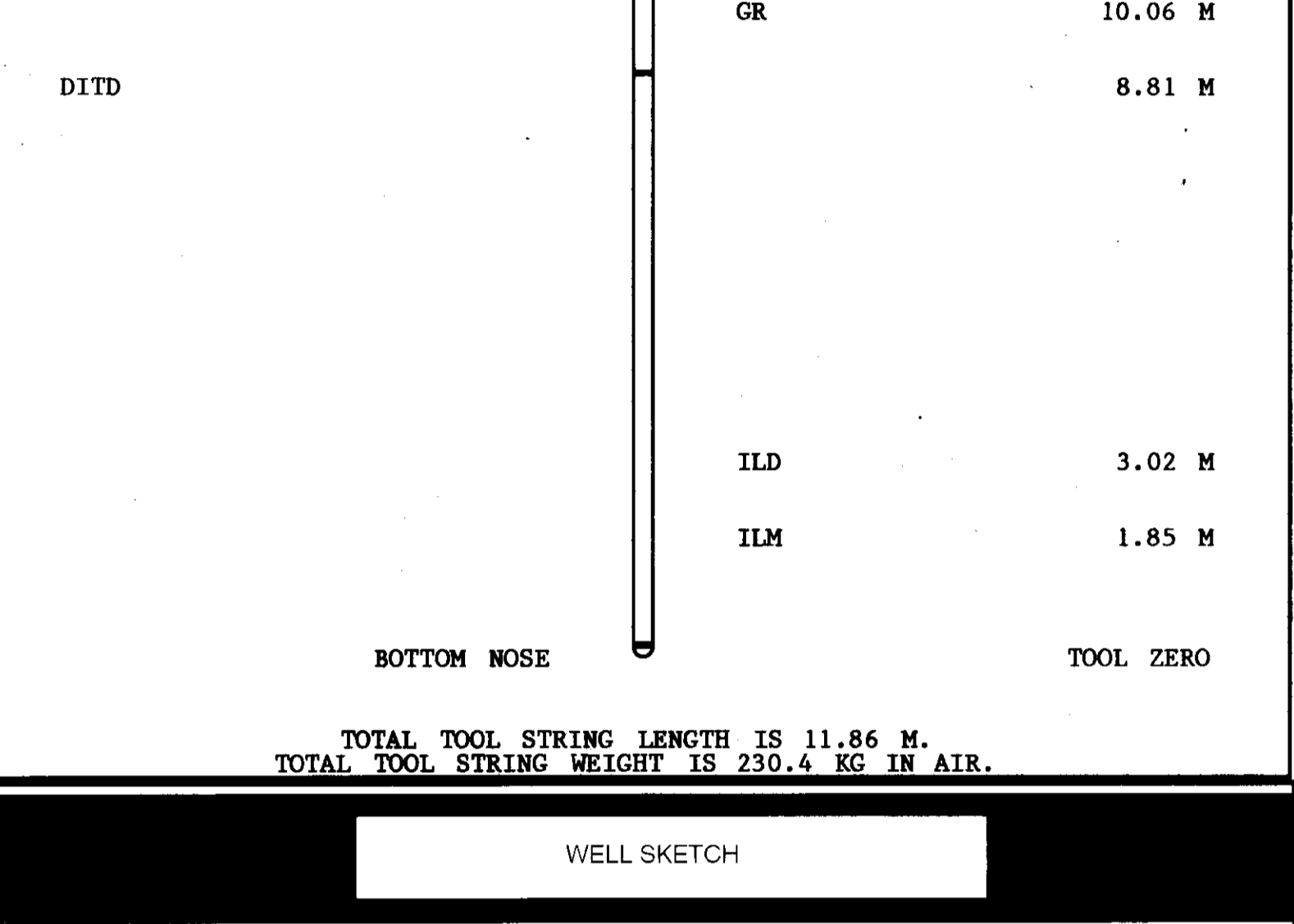
Run No.	1 SUITE 2
Service Order No.	
Drilling Fluid Level	
Salinity	
Rmf @ BHT	@ 67.2 DEGC
Rmc @ BHT	@ 67.2 DEGC
Logging Speed	1800.0 F/HR
EQUIPMENT DATA	
Tool Number 1	DIS-EC 1556
Tool Number 2	DIC-DA 1474
Tool Number 3	IEM-BF 603
Tool Number 4	SGC-JC 2480
Tool Number 5	NSM-A 2992
Tool Number 6	WHE-10K
Tool Number 7	
Tool Number 8	
Tool Number 9	
Tool Number 10	
Tool Number 11	
Tool Number 12	
REMARKS:	SEE REMARKS BELOW.

LOG OPERATION REMARKS

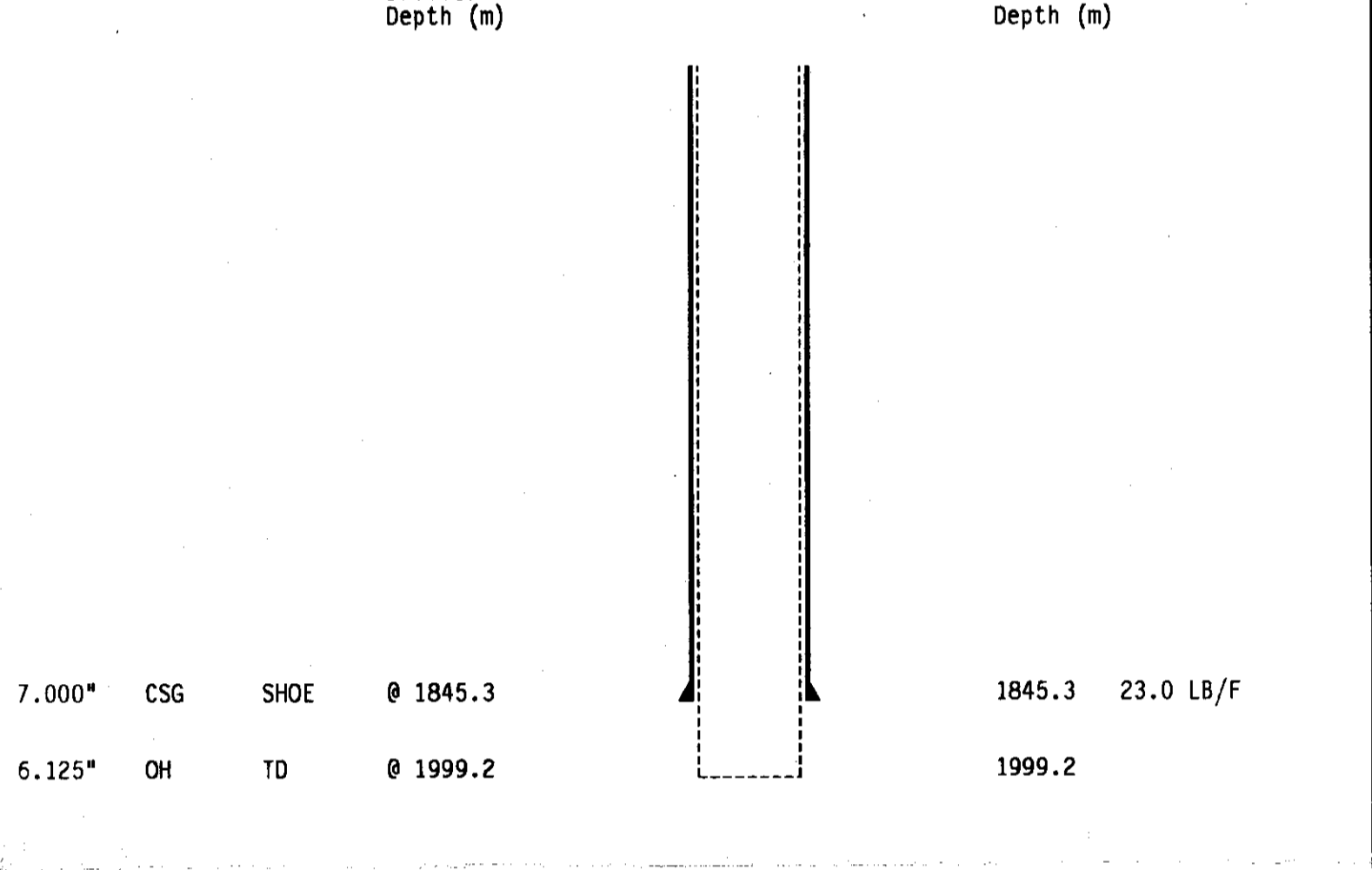
REMARKS:
 OPEN HOLE LOGS PERFORMED IN GAS FILLED HOLE UNDER PRESSURE, SIWHP = 1472 PSI OPERATION PERFORM WITH SNUBBING UNIT AND WHE. ESTIMATED DOWNHOLE GAS DENSITY 0.07 G/C3. HOLE COMPLETELY DRY TO TD.
 DIL RUN IN ANALOGUE MODE DUE TO MAKE-UP HEIGHT LIMITS. WHP REDUCED BY FLARING TO ENABLE TOOL TO RUN IN. 7" 23 LB/F CASING IN PLACE, ID = 6.366". HITWELL DOWNHOLE VIDEO CAMERA (DHV) RUN AS SUITE #1 TWO PASSES WERE PERFORMED. PASS #1 WAS PERFORMED WITH A TUBE LIGHT SOURCE (COMPASS ATTACHED). PASS #2 WAS RUN WITH A RING LIGHT SOURCE. DATA WAS RECORDED ON VIDEO TAPE CASSETTES; TAPE #1 WAS USED FOR THE TUBE LIGHT PASS AND TAPE #2 FOR THE RING LIGHT PASS.

TOOL SKETCH

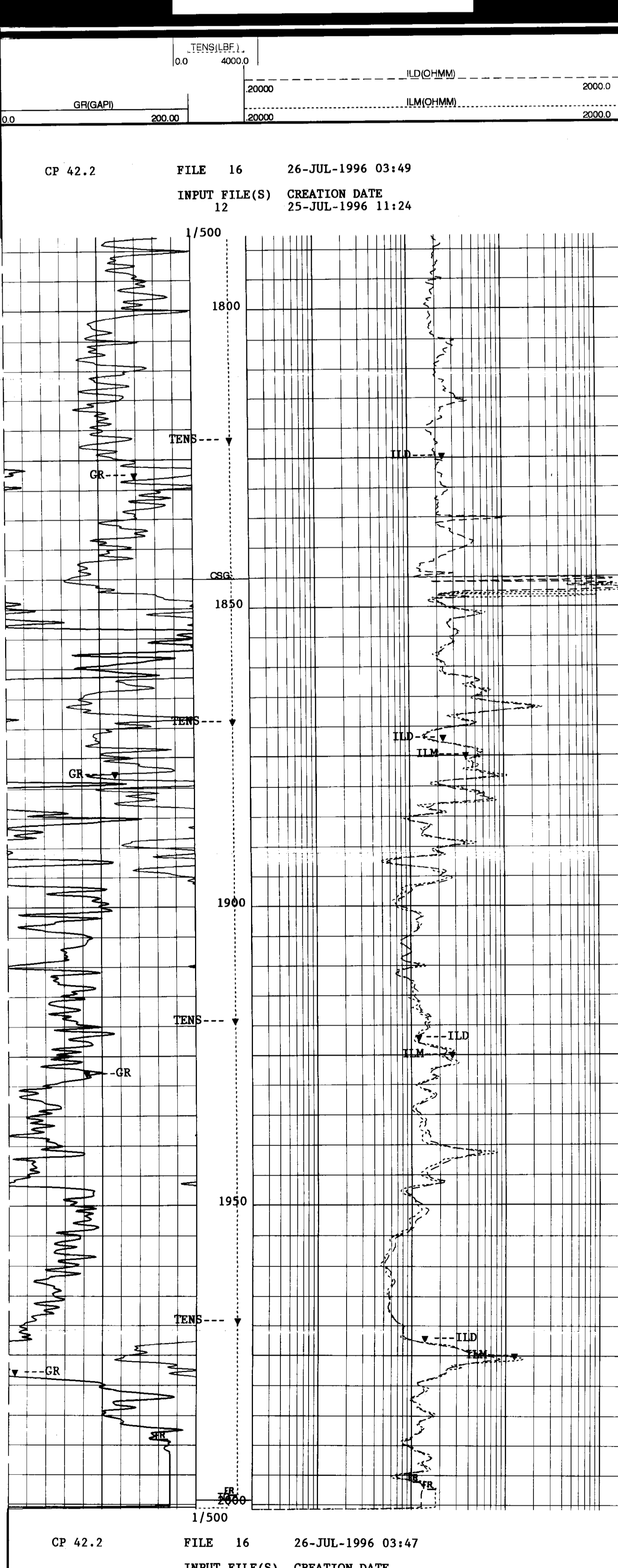
LOGGING TOOL STRING SKETCH



WELL SKETCH



MAIN LOG 1/500



CP 42.2 FILE 16 26-JUL-1996 03:47
 INPUT FILE(S) 12 CREATION DATE 25-JUL-1996 11:24

TENS(LB/F) 0.0 4000.0
 GR(GAPI) 0.0 200.0

ILD(OHMM) 2000.0 2000.0
 ILM(OHMM) 2000.0 2000.0

SENSOR MEASURE POINT TO TOOL ZERO
 DITD 3.02 METER SGTE 10.06 METER
 DTT .76 METER

PARAMETERS

NAME	VALUE	UNIT	NAME	VALUE	UNIT
PP	NORM		DO	-.500000	M
WMUD	.0700000	G/C3	MSEC	6.30000	MM/M
SBR	1.00000	OHMM	DSEC	3.90000	MM/M
NCJT	GSRV		BS	6.12500	IN
BHS	OPEN				

COMPANY	MAGELLAN PETROLEUM	SCHL FR	1996.8 M
WELL	PALM VALLEY #2	SCHL TD	1999.2 M
FIELD	PALM VALLEY	DRLR TD	1999.2 M
COUNTRY	AUSTRALIA	Elev:	KB 914.4 M
		STATE	DF
			QL 909.2 M

PALM VALLEY #2
DIL-GR 1/500
RUN #1 SUITE #2

Schlumberger