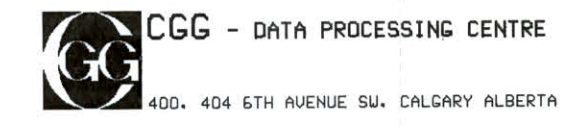
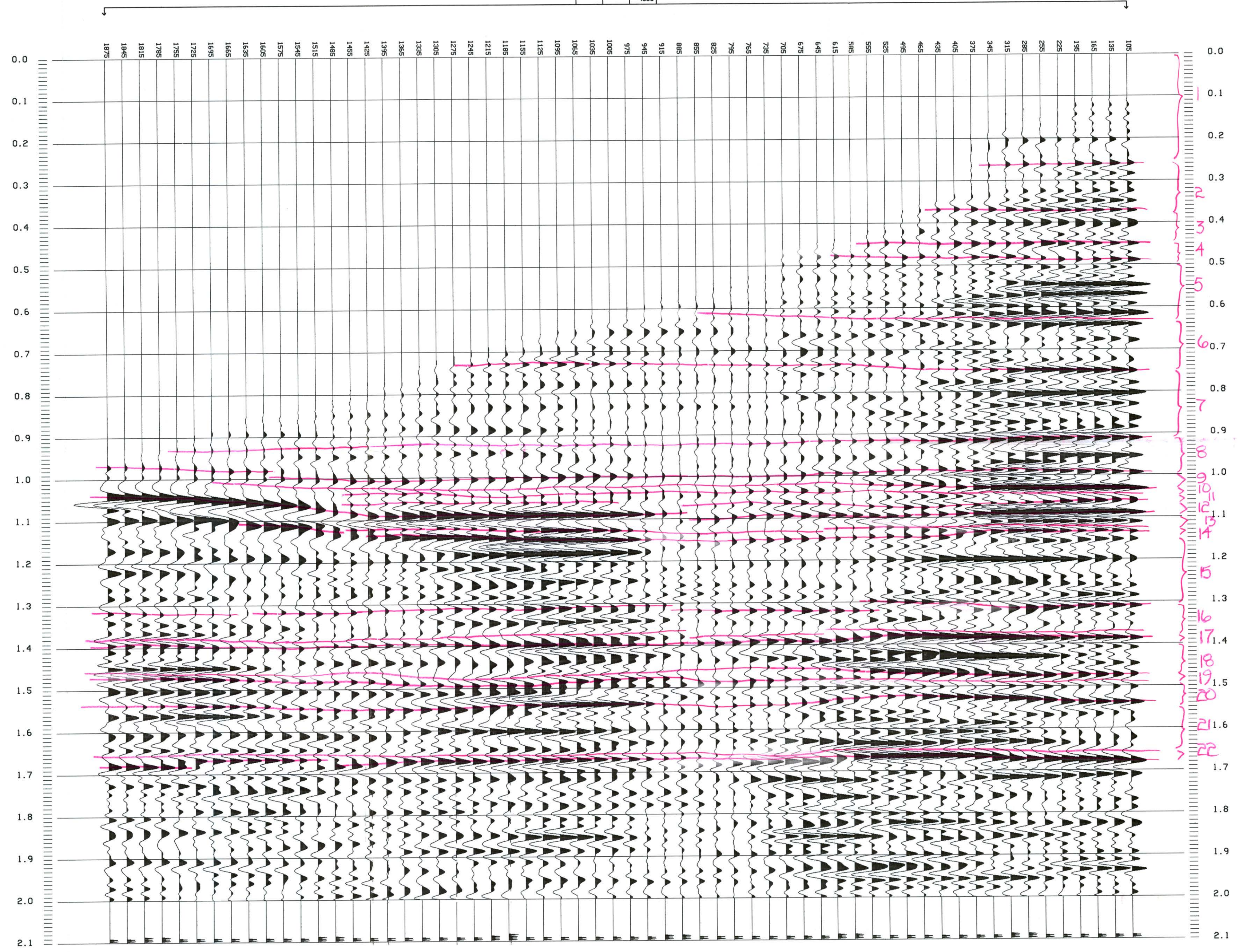


CDP	248	SP	19
TIME	NNO U	INT U	
253	1694	1694	
325	1861	2478	
494	1900	1908	
616	1942	2104	
859	1975	2495	
1000	2025	2198	
1075	2066	2253	
1171	2175	2146	
1335	2400	2671	
1410	2450	3212	
1546	2500	3823	
1720	2900	4803	
1950	3200	4891	
		4900	



TERRA LINDA GROUP

COMPANY
 DUNE
 AREA
 S87-DU-05
 LINE
 STATION 363
 LOCATION

COMMON OFFSET STACK
 AMPLITUDE WITH OFFSET DISPLAY
 POLARITY: NORMAL

FIELD RECORDING

SHOT FOR: SYDNEY OIL
 SHOT BY: NORPAC INTERNATIONAL INC.
 DATE SHOT: NOVEMBER 1987
 SPREAD
 FOLD: 12
 STATION INTERVAL: 30 M
 SP INTERVAL: 150 M
 TRACE: 1 -----60-x-51-----240
 DISTANCE: (M.) 1875---105-x-105-----1875
 RECEIVER
 MAKE/MODEL/TYPE: 10 HZ.
 SPACING: 2.73 M
 NO./GROUP: 12
 GAIN CONTROL: IFP
 SOURCE
 TYPE: VIBROSEIS
 NO. OF VIBRATORS: 4 OVER 150 M
 NO OF SWEEPS: 6
 SWEEP LENGTH: 8 SEC.
 RECORD LENGTH: 4 SEC.
 SWEEP SPECTRUM: 10-80 HZ
 INSTRUMENTS
 MAKE/MODEL: DFS 5
 FILTER: 8(18)-128/(72) HZ(DB).
 TAPE DENSITY: 6250 BPI
 TAPE FORMAT: SEGY

PROCESSING

- DEMULTIPLEXING
- RECORDED 2 MSEC. 4 SEC
- PROCESSED 2 MSEC. 3 SEC.
- GAIN RECOVERY (BINARY)
- EDITING
- TRACE SORTING INTO C.D.P. GATHERS
- ELEVATION STATICS (FLOATING DATUM)
 DATUM ELEVATION: ELEVATION AT SHOTPOINT LOCATION
- TRACE SORTING INTO COMMON OFFSET GATHERS
- ZERO PHASE DECONVOLUTION
 OPERATOR : 10-80 HZ.
 WINDOW: 0-2500
- VELOCITY ANALYSIS (USING 11 ADJACENT CDP'S)
- N.M.O. AND MUTES
- TRACE EQUALIZE OVER RANDOM NOISE GATE
 T.E. GATE: 2000-3000 MS
- STACK (NORMALIZED BY NUMBER OF INPUT TRACES)
- HORIZONTAL TRACE MIX (7 TRACE SUMS)
- TRACE EQUALIZE OVER RANDOM NOISE GATE
 T.E. GATE: 2000-3000 MS
- ORMSBY ZERO PHASE FILTER 10/15-75/85 HZ.
- FINAL PRESERVED AMPLITUDE DISPLAY
 SCALE (APPROXIMATELY 6 DB./SEC.)

DISPLAY

PLOTTER: DIGITAL TNR 81
 HORIZONTAL SCALE: 4 TRACES/IN
 VERTICAL SCALE: 6 IN/SEC