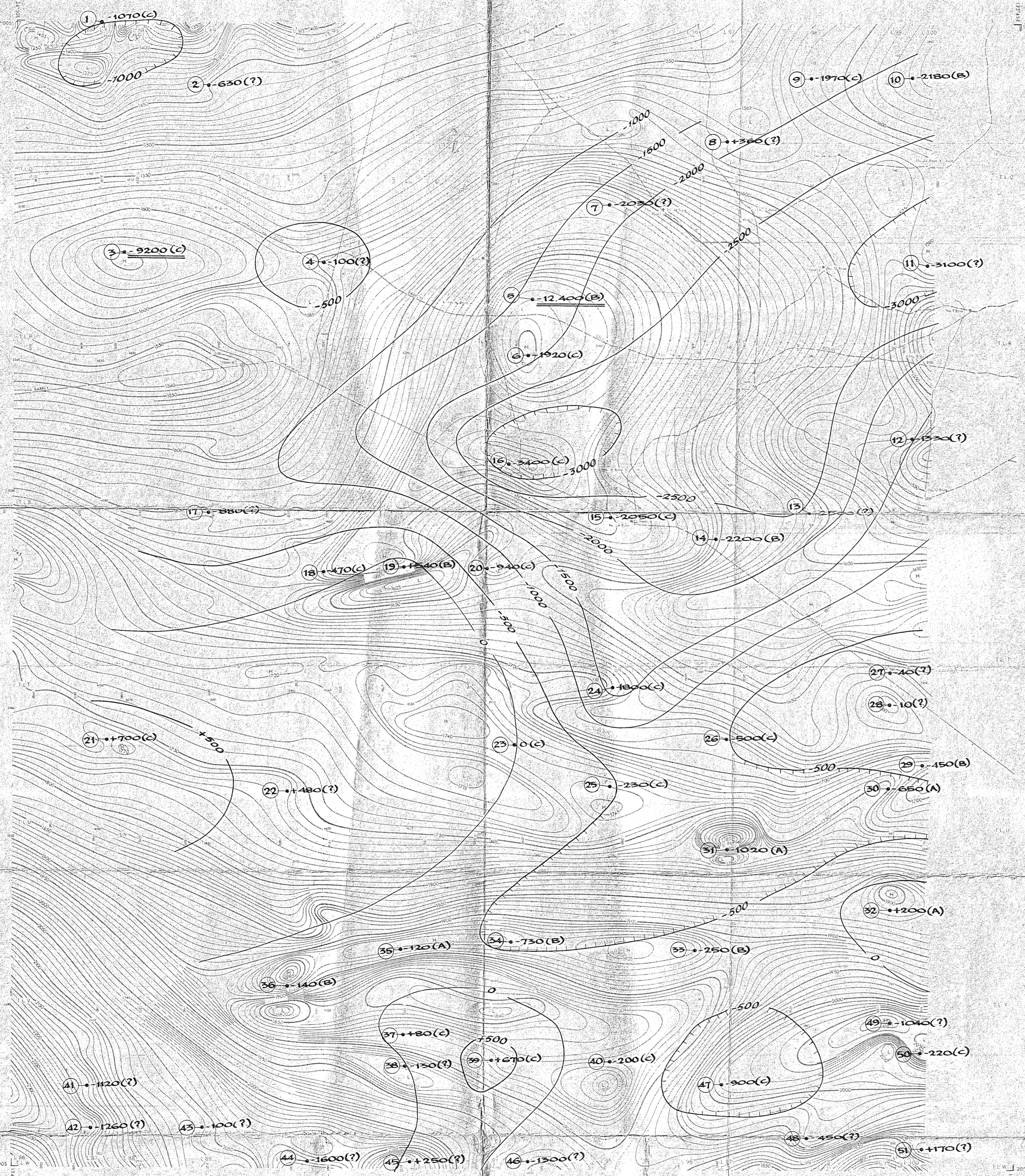


PR63/007A



~LEGEND~

- (21) Reference Number used in Report
- Location of Depth Determination
- 1000
-12000 } Elevation in Feet referred to Sea Level of Magnetic Body (Underlined in the case of Intrabasement Features)
- (A,B,C,?) Estimated Grade of Depth Determination :-
Good, Fair, Poor, Questionable (See Report)
- 500 } Contours of Magnetic Basement elevation referred to Sea Level.

